

4

3

2

1

## REVISIONS

LTR	DESCRIPTION	DATE
A1	REVISED PER ECO-20-011498	07/27/2020

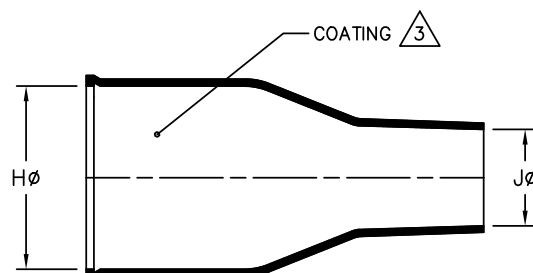
## NOTES

- ALL DIMENSIONS ARE IN  $\frac{\text{INCHES}}{[\text{MILLIMETERS}]}$
- DIMENSIONS APPEARING IN TABLE ARE AS FOLLOWS:  
a - AS SUPPLIED  
b - AFTER UNRESTRICTED RECOVERY

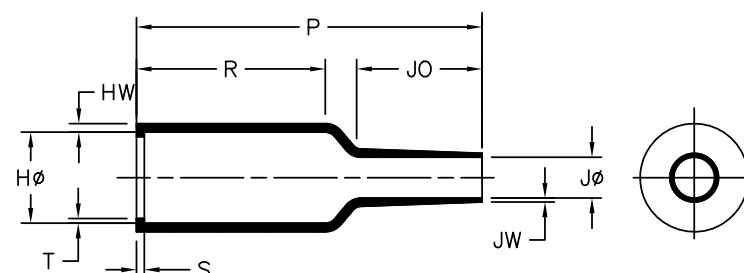
3. COATING (ADHESIVE): IS OPTIONAL. AS SUPPLIED DIMENSIONS APPEARING IN TABLE ARE FOR UNCOATED PARTS. WHEN COATING IS ADDED, ENTRY DIAMETER WILL BE REDUCED BY .06 [1.5] MAX.

## 4. ORDERING INFORMATION

BASE PART NUMBER 202K111 -100 /XXX -0  
 MATERIAL DASH NUMBER -100 POLYOLEFIN, SEMI-FLEXIBLE ZEROHAL (RW-2082)  
 ADHESIVE SLASH NUMBER /XXX SEE COMPATIBILITY CHART BELOW  
 COLOR DESIGNATOR -0



AS SUPPLIED



AFTER UNRESTRICTED RECOVERY

TABLE OF DIMENSIONS

PART DESCRIPTION	H		J		P	R	S	T	JO	HW	JW
	MIN	MAX	MIN	MAX	±10%	±10%	±10%	±10%	±10%	±20%	±20%
	a	b	a	b	b	b	b	b	b	b	b
202K111	.71 [18,0]	.27 [6,9]	.31 [8,0]	.12 [3,0]	1.54 [39]	.94 [24]	.07 [1,7]	.04 [0,9]	.43 [10,8]	.05 [1,3]	.03 [0,7]

## COMPATIBILITY CHART

MATERIAL DASH NO.	ADHESIVE (COATING) SLASH NUMBER	ADHESIVE (COATING) S NUMBER
-100	/86; /180	S-1048; S-1030

If this document is printed it becomes uncontrolled. Check for the latest revision.

Raychem Molded Parts  
**CUSTOMER DRAWING**

UNLESS OTHERWISE SPECIFIED  
 DIMENSIONS ARE INCHES. METRIC  
 DIMENSIONS ARE IN BRACKETS.

## DECIMAL TOLERANCES

.XXX ± 0.005 [0.13 mm]  
 .XX ± 0.01 [0.25 mm]  
 .X ± 0.1 [0.50 mm]

ANGLE TOLERANCE  
 ANGLE ± 1 DEG.

TYCO ELECTRONICS CORPORATION RESERVES THE  
 RIGHT TO AMEND THIS DRAWING AT ANY TIME.  
 USERS SHOULD EVALUATE THE SUITABILITY OF THE  
 PRODUCT FOR THEIR APPLICATION.

© 2020 Tyco Electronics Corporation. All rights reserved.

REVISED  
YNGUYENAPPROVED  
S.GRAVANOTHIRD ANGLE  
PROJECTION

**STE** TE Connectivity

## TITLE

BOOT, STRAIGHT WITH LIP

SIZE  
BCODE IDENT. NO.  
06090

DWG. NO.

202K111-100

SCALE: NTS DO NOT SCALE THIS DRAWING SHEET 1 OF 1

4

3

2

1

# Mouser Electronics

Authorized Distributor

Click to View Pricing, Inventory, Delivery & Lifecycle Information:

[TE Connectivity:](#)

[EG0027-000](#)