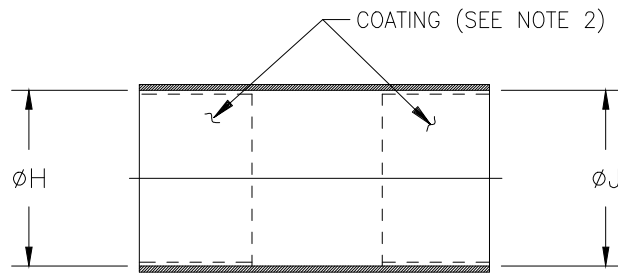
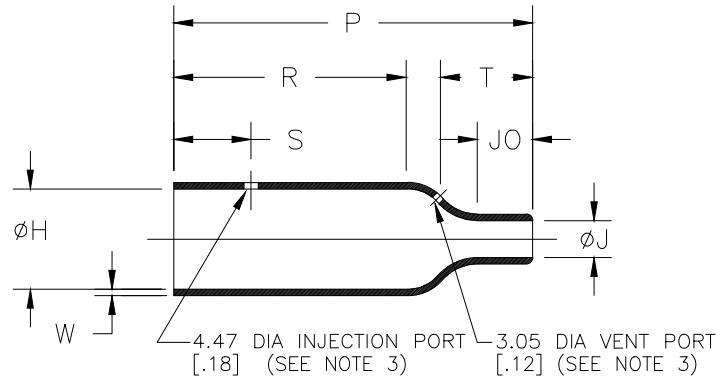


REVISIONS

P	LTR	DESCRIPTION	DATE	DWN	APVD
	Z	PRODUCTION ISSUE	31JAN2019	PNT	MT



AS SUPPLIED



AFTER UNRESTRICTED RECOVERY

TABLE OF DIMENSIONS

PART NUMBER	H				J				P	R	S	T	JO	W
	Min -3,-4,-25 a	Min -12,-100 a	Min -6 a	Max b	Min -3,-4,-25 a	Min -12,-100 a	Min a	Max b	±10% b	±10% b	Ref b	Ref b	Ref b	±20% b
202A111	16.5 [.65]	16.5 [.65]	16.5 [.65]	7.9 [.31]	16.5 [.65]	11.9 [.47]	16.5 [.65]	3.8 [.15]	25.4 [1.00]	14.2 [.56]	12.7 [.50]	N/A	5.8 [.23]	1.27 [.05]
202A121	24.6 [.97]	22.6 [.89]	23.4 [.92]	9.9 [.39]	24.6 [.97]	17.8 [.70]	23.4 [.92]	5.3 [.21]	38.1 [1.50]	21.8 [.86]	15.2 [.60]	N/A	9.1 [.36]	1.52 [.06]
202A132	28.4 [1.12]	26.2 [1.03]	26.7 [1.05]	14.2 [.56]	28.4 [1.12]	20.3 [.80]	26.7 [1.05]	6.6 [.26]	51.3 [2.02]	27.9 [1.10]	19.1 [.75]	16.0 [.63]	13.0 [.51]	1.78 [.07]
202A142	31.0 [1.22]	31.0 [1.22]	31.0 [1.22]	17.8 [.70]	31.0 [1.22]	25.4 [1.00]	31.0 [1.22]	7.4 [.29]	66.8 [2.63]	35.6 [1.40]	19.1 [.75]	22.1 [.87]	17.8 [.70]	1.78 [.07]
202A153	36.0 [1.42]	36.0 [1.42]	36.0 [1.42]	21.9 [.86]	36.0 [1.42]	26.2 [1.03]	36.0 [1.42]	8.6 [.34]	73.7 [2.90]	41.4 [1.63]	19.1 [.75]	22.1 [.87]	16.0 [.63]	1.78 [.07]
202A163	42.7 [1.68]	42.7 [1.68]	42.7 [1.68]	27.4 [1.08]	42.7 [1.68]	27.2 [1.07]	42.7 [1.68]	9.4 [.37]	99.1 [3.90]	62.7 [2.47]	19.1 [.75]	25.2 [.99]	18.0 [.71]	2.03 [.08]
202A174	51.8 [2.04]	48.3 [1.90]	51.8 [2.04]	35.3 [1.39]	51.8 [2.04]	48.3 [1.90]	51.8 [2.04]	16.0 [.63]	130.3 [5.13]	64.8 [2.55]	25.4 [1.00]	50.8 [2.00]	41.9 [1.65]	3.30 [.13]
202A185	66.0 [2.60]	66.0 [2.60]	66.0 [2.60]	43.7 [1.72]	66.0 [2.60]	54.1 [2.13]	66.0 [2.60]	19.6 [.77]	161.3 [6.35]	90.2 [3.55]	25.4 [1.00]	54.6 [2.15]	47.8 [1.88]	3.81 [.15]
202A196	86.4 [3.40]	86.4 [3.40]	86.4 [3.40]	57.2 [2.25]	86.4 [3.40]	71.4 [2.81]	86.4 [3.40]	26.9 [1.06]	212.6 [8.37]	113.0 [4.45]	25.4 [1.00]	80.0 [3.15]	62.2 [2.45]	4.06 [.16]

DIMENSIONS:

mm [INCHES]

DWN

PRAVEEN N T

31JAN2019

CHK

N NAGAR

31JAN2019

APVD

M TAYLOR

31JAN2019

PRODUCT SPEC

—

APPLICATION SPEC

—

WEIGHT

MATERIAL

SEE SHEET 2

FINISH

—



TE Connectivity Ltd.

NAME

BOOT, STRAIGHT, OVEREXPANDED

SIZE

A4

CAGE CODE

00779

DRAWING NO

C-202A111-XX-0THRU196-XX-0

RESTRICTED TO

—

CUSTOMER DRAWING

SCALE

DNS

SHEET

1 of 2

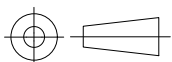
REV

Z

THIS DRAWING IS UNPUBLISHED.

COPYRIGHT - TE Connectivity Ltd.

0 PLC ± —
 1 PLC ± 0.50[.1]
 2 PLC ± 0.25[.01]
 3 PLC ± 0.13[.005]
 4 PLC ± —
 ANGLES ± 1°



REVISIONS

P	LTR	DESCRIPTION	DATE	DWN	APVD
	—	SEE SHEET 1	—	—	—

COMPATABILITY CHART

MATERIAL DASH NO.	MATERIAL DESCRIPTION	RT SPEC	COATING SLASH NO.	COATING S NO.
-3	Polyolefin, Semi-rigid	RT-301	/42;/86;/180	S1017;S1048;S1030
-4	Polyolefin, Flexible	RT-1304	/42;/86;/180	S1017;S1048;S1030
-12	Fluoroelastomer, Flexible	RT-1312	N/A	N/A
-25	Elastomer, Fluid Resistant	RW-2070	/42;/86;/225	S1017;S1048;S1206
-100	Polyolefin, Semi-flexible ZEROHAL	RW-2082	/86;/180	S1048;S1030

ORDERING INFORMATION

202A1XX -XX -XX /XX -0
 BASE PART NUMBER _____
 MATERIAL DASH NUMBER _____
 (SEE COMPATIBILITY CHART)
 MODIFICATION NUMBER _____
 ADHESIVE SLASH NUMBER _____
 (IF NECESSARY SEE COMPATIBILITY CHART)
 COLOR DESIGNATOR _____

NOTES:


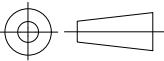
- DIMENSIONS APPEARING IN TABLE ARE AS FOLLOWS:
 a - AS SUPPLIED
 b - AFTER UNRESTRICTED RECOVERY
- COATING (ADHESIVE) IS OPTIONAL. AS SUPPLIED DIMENSIONS APPEARING IN TABLE ARE FOR UNCOATED PARTS. WHEN COATING IS ADDED, ENTRY DIAMETER WILL BE REDUCED BY 1.5mm[.06] MAX.
- MOLDING PORTS ARE OPTIONAL. WHEN -00 MODIFICATION NUMBER IS SPECIFIED, MOLDING PORTS WILL BE LOCATED AS SHOWN.

RELEASED FOR PUBLICATION

ALL RIGHTS RESERVED.

COPYRIGHT - TE Connectivity Ltd.



DIMENSIONS: mm [INCHES]	DWN PRAVEEN N T	31JAN2019	MATERIAL —	FINISH —	
	CHK N NAGAR	31JAN2019	 TE Connectivity Ltd.		
TOLERANCES UNLESS OTHERWISE SPECIFIED:	APVD M TAYLOR	31JAN2019			
0 PLC ± — 1 PLC ± 0.50[.1] 2 PLC ± 0.25[.01] 3 PLC ± 0.13[.005] 4 PLC ± — ANGLES ± 1°	PRODUCT SPEC —	NAME BOOT, STRAIGHT, OVEREXPANDED			
	APPLICATION SPEC —				
		WEIGHT	SIZE A4	CAGE CODE 00779	DRAWING NO C-202A111-XX-0THRU196-XX-0
CUSTOMER DRAWING			SCALE DNS	SHEET 2 of 2	REV Z

Mouser Electronics

Authorized Distributor

Click to View Pricing, Inventory, Delivery & Lifecycle Information:

TE Connectivity:

[202A174-3-0](#) [CF5095-000](#) [134727N003](#) [230980-000](#) [290157-000](#) [813848N003](#) [813981N002](#) [814336-000](#)
[814371N002](#) [807029-000](#) [474319N002](#) [507686-000](#) [606413-000](#) [A00188-000](#) [363073-000](#) [364573-000](#) [822308-](#)
[000](#) [CU1614-000](#) [CR9901-000](#) [014946-000](#) [087396-000](#) [698305-000](#) [581901-000](#) [140855-000](#) [CN9034-000](#)
[CN9038-000](#) [CP2200-000](#) [997759-000](#) [151473-000](#) [840389-000](#) [499257-000](#) [975635-000](#) [CN9134-000](#) [CH0902-](#)
[000](#) [CN2150-000](#) [EK3937-000](#) [214015-000](#) [CH0906-000](#) [CH1146-000](#) [597449-000](#) [180165-000](#) [171095-000](#)
[315163-000](#) [227757-000](#) [CN9036-000](#) [451489-000](#) [570159-000](#) [202A174-4/42-0](#) [202A163-100-0](#) [202A196-3-0](#)
[813854N004](#) [CM5436-000](#) [202A142-4/180-0](#) [202A163-25/42-0](#) [202A163-3-13-0](#) [202A153-3-0-CS5046](#) [202A111-4-](#)
[0-CS8458](#) [202A111-4-00-0](#) [CP2271-000](#) [202A174-12-0](#) [202A153-3-00-0](#) [CP2272-000](#) [503679N002](#) [202A121-4-0-](#)
[CS5067](#) [202A111-3-0-CS6634](#) [202A153-100-0](#) [202A174-3/42-0](#) [202A185-3/42-0](#) [202A142-100/86-0](#) [CC2543-000](#)
[202A121-25/42-0-CS8590](#) [202A132-3-00/42-0](#) [202A163-4-0](#) [202A132-100/86-0](#) [202A111-3-00-0](#) [202A163-4-0-](#)
[CS5067](#) [202A153-3-00/42-0](#) [814276N001](#) [814378N001](#) [202A111-25-15/225-0](#) [202A196-3-00-0](#) [202A121-4-00-0](#)
[202A142-4-00/42-0](#) [202A174-3/86-0](#) [202A163-3-0-CS5046](#) [202A163-25-01-0](#) [813854N003](#) [202A121-3-0-CS8341](#)
[202A142-25-00-0](#) [202A121-3-0-CS5086](#) [202A121-4-0-CS8195](#) [202A163-25-CS-1825-0](#)