

THIS DRAWING IS UNPUBLISHED.

RELEASED FOR PUBLICATION

SEP ,2007.

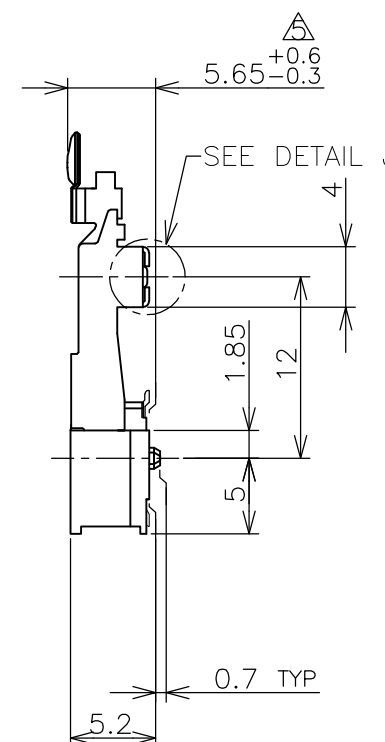
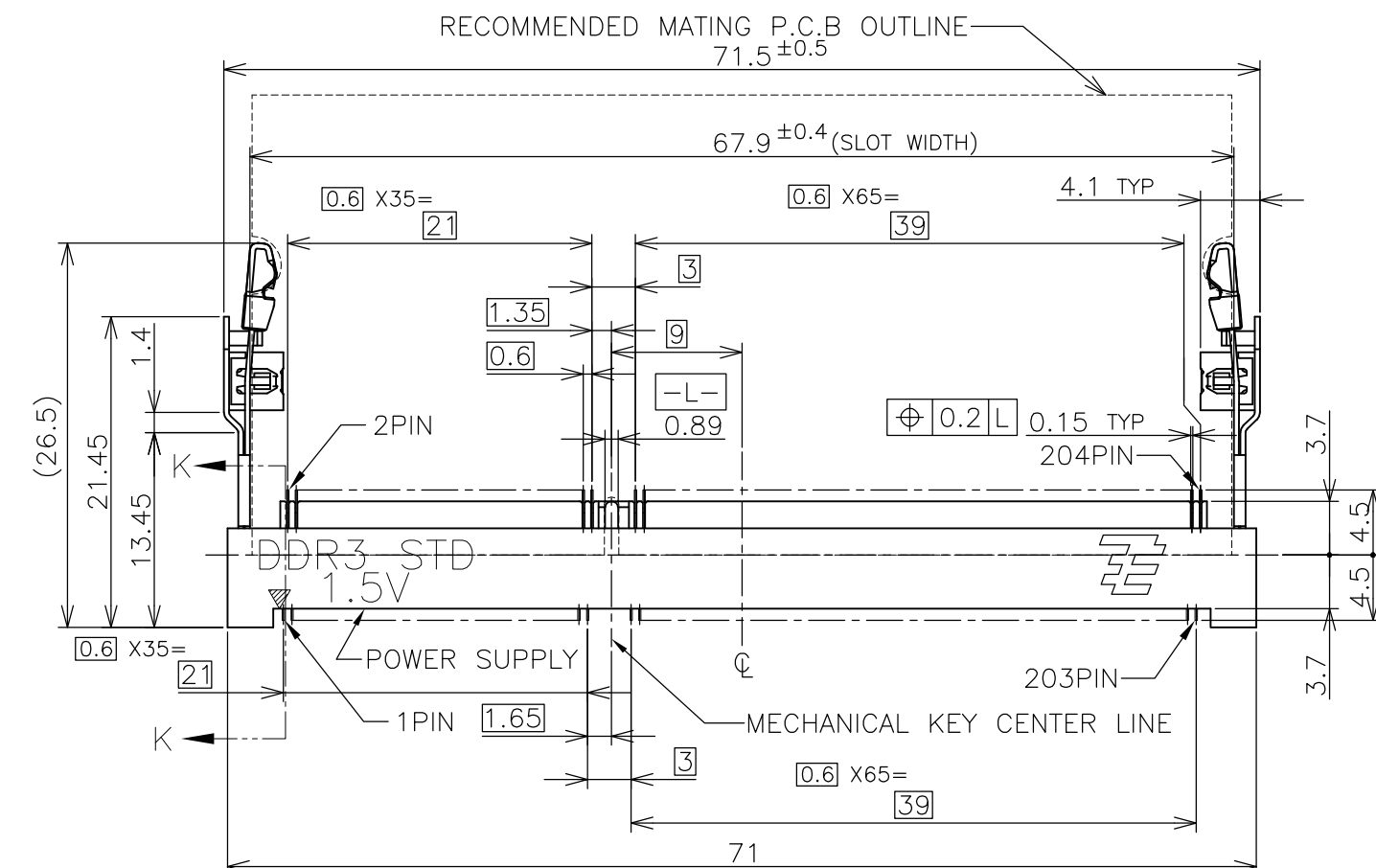
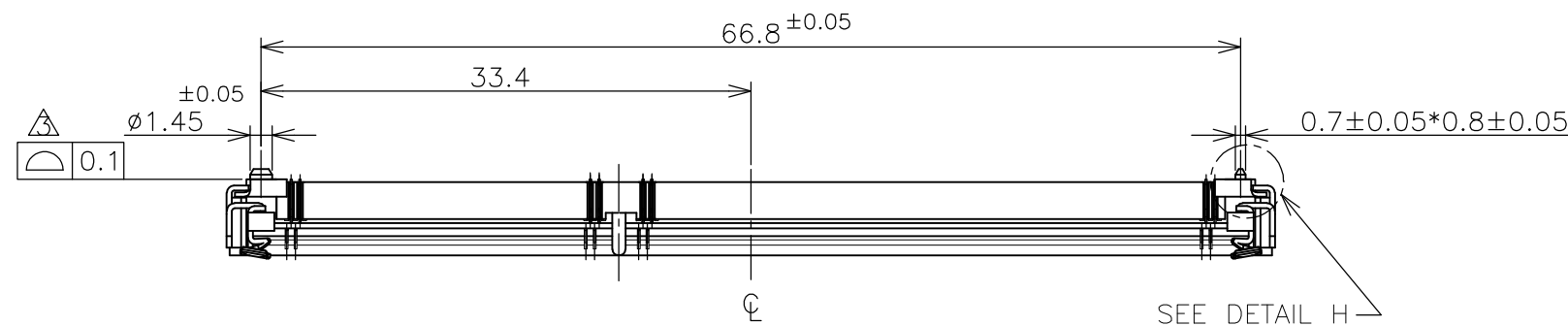
© COPYRIGHT 2007 By --

ALL RIGHTS RESERVED.

LOC
JDIST
/

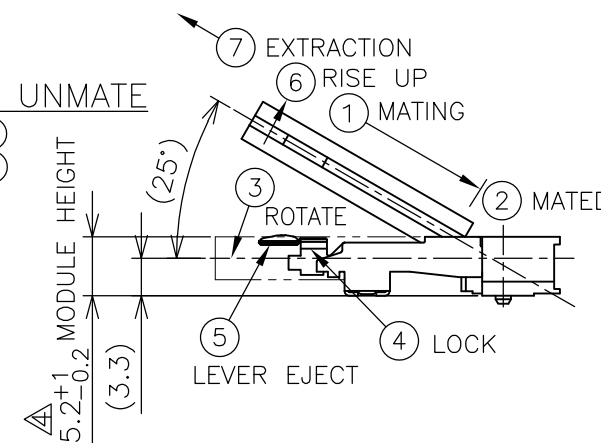
REVISIONS

P	LTR	DESCRIPTION	DATE	DWN	APVD
	C	REVISED PER ECR-12-004002	01MAR2012	W.W	C.W



HOW TO MATE AND UNMATE

MATE: ① → ④
UNMATE: ⑤ → ⑦



(APPLIED TO SHEET 1-3)

1. MATERIAL ; HOUSING: HIGH TEMPERATURE THERMO PLASTIC UL94V-0
COLOR: BLACK
CONTACT: COPPER ARROY
LOCK LEVER: STAINLESS STEEL
PEG: COPPER ARROY

2-1. FINISH ; CONTACT AREA: GOLD FLASH
ALL OVER NICKEL.
SOLDERING AREA: GOLD FLASH PLATING
PEG: TIN PLATING

2-2. FINISH ; CONTACT AREA: 0.000254MIN GOLD
ALL OVER NICKEL.
SOLDERING AREA: GOLD FLASH PLATING
PEG: TIN PLATING

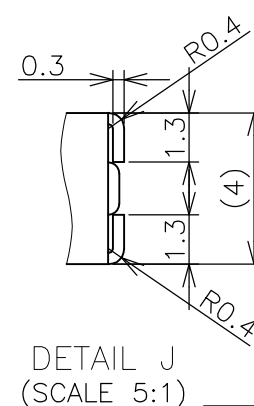
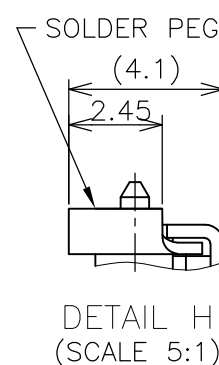
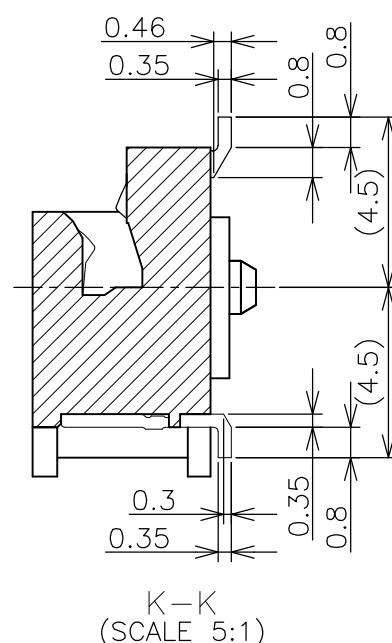
2-3. FINISH ; CONTACT AREA: 0.00076MIN GOLD
ALL OVER NICKEL.
SOLDERING AREA: GOLD FLASH PLATING
PEG: TIN PLATING

△ COPLANARITY: 0.1 MAX. (BEFORE SOLDERING)

△ THE FLOATING VALUE BY SOLDERING IS NOT INCLUDED.

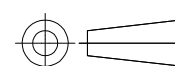
△ NOT MATING CONDITION.

6. IF THE MODULE DOESN'T INSERT AND LOCK IN THE LATCH SMOOTHLY,
OPEN WIDE BOTH LATCHES BY MANUAL. AND THE MODULE MUST BE
INSERTED AND LOCKED IN THE LATCH.



GENERAL TOLERANCE
10 ≥ ±0.2
30 ≥ >10: ±0.25
100 ≥ >30: ±0.3
ANGLES: ±3°

THIS DRAWING IS A CONTROLLED DOCUMENT.

DIMENSIONS:
MM

MATERIAL

TOLERANCES UNLESS
OTHERWISE SPECIFIED:

0 PLC ±
1 PLC ±
2 PLC ±
3 PLC ±
4 PLC ±
ANGLES ±
FINISH ±

DWN T.FUMIKURA 18SEP2007

CHK K.IKEGAMI 18SEP2007

APVD K.IKEGAMI 18SEP2007

PRODUCT SPEC

108-78493

APPLICATION SPEC

WEIGHT 4.4g

CUSTOMER DRAWING

TE

TE Connectivity

NAME

DDR3 SODIMM SOCKET
0.6mm PITCH 204POS
5.2mm HEIGHT STANDARD TYPE

SIZE

CAGE CODE

DRAWING NO

RESTRICTED TO

A300779

C-2013289

SCALE 2:1

SHEET 1 OF 6

REV C

4

3

2

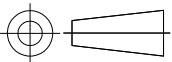
1

LOC	DIST	REVISIONS				
		P	LTR	DESCRIPTION	DATE	APVD
J			-	SEE SHEET 1	-	-

AVAILABLE	ENBOSS (SEE SHEET 6)	WITH BOSS	BLACK	NOTE 2-3	1.5V	204	2-2013289-3
AVAILABLE	ENBOSS (SEE SHEET 6)	WITH BOSS	BLACK	NOTE 2-2	1.5V	204	2-2013289-2
AVAILABLE	ENBOSS (SEE SHEET 6)	WITH BOSS	BLACK	NOTE 2-1	1.5V	204	2-2013289-1
AVAILABLE	SEMI-HARD TRAY (SEE SHEET 5)	WITH BOSS	BLACK	NOTE 2-3	1.5V	204	2013289-3
AVAILABLE	SEMI-HARD TRAY (SEE SHEET 5)	WITH BOSS	BLACK	NOTE 2-2	1.5V	204	2013289-2
AVAILABLE	SEMI-HARD TRAY (SEE SHEET 5)	WITH BOSS	BLACK	NOTE 2-1	1.5V	204	2013289-1
TOOLING STATUS	PACKAGING TYPE	BOSS TYPE	HOUSING COLOR	FINISH	POWER SUPPLY	POS	PART NO.

THIS DRAWING IS A CONTROLLED DOCUMENT.

DIMENSIONS:
MM



MATERIAL

TOLERANCES UNLESS OTHERWISE SPECIFIED:

0 PLC ±
1 PLC ±
2 PLC ±
3 PLC ±
4 PLC ±
ANGLES ±
FINISH

DWN

CHK


APVD

PRODUCT SPEC

APPLICATION SPEC

WEIGHT

CUSTOMER DRAWING

TE Connectivity

NAME
DDR3 SODIMM SOCKET
0.6mm PITCH 204POS
5.2mm HEIGHT STANDARD TYPE

SIZE
A3

CAGE CODE
00779

DRAWING NO
C-2013289

RESTRICTED TO
-

SCALE
2:1

SHEET
2 OF 6

REV
C

DIST	
------	--

LTR

DESCRIPTION

DATE _____

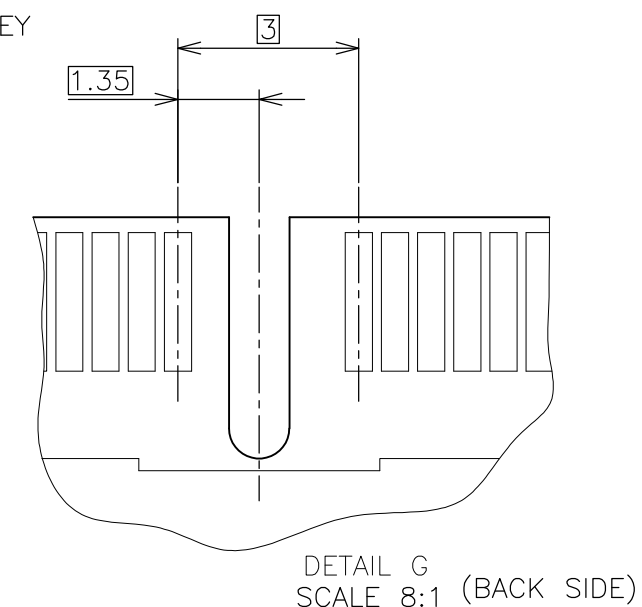
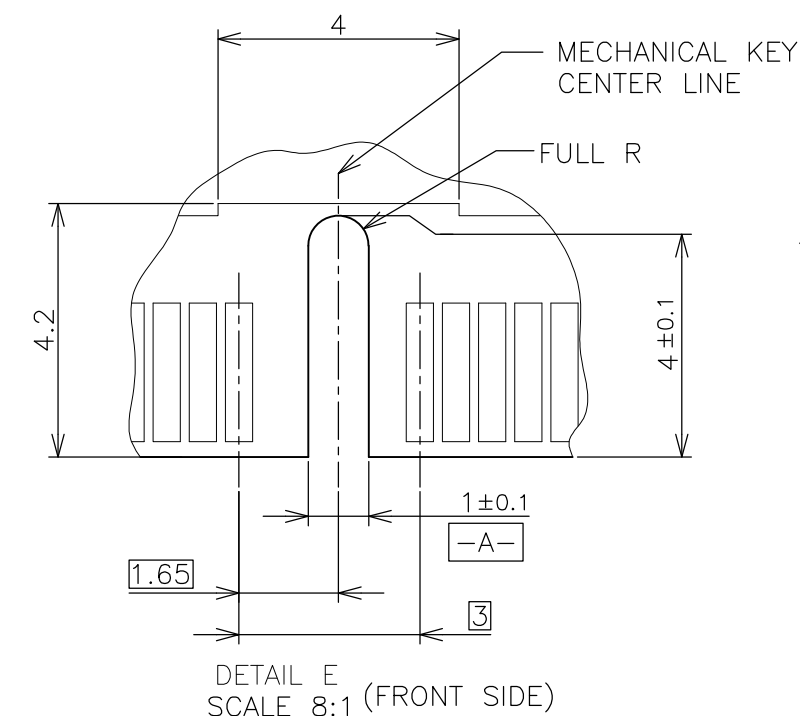
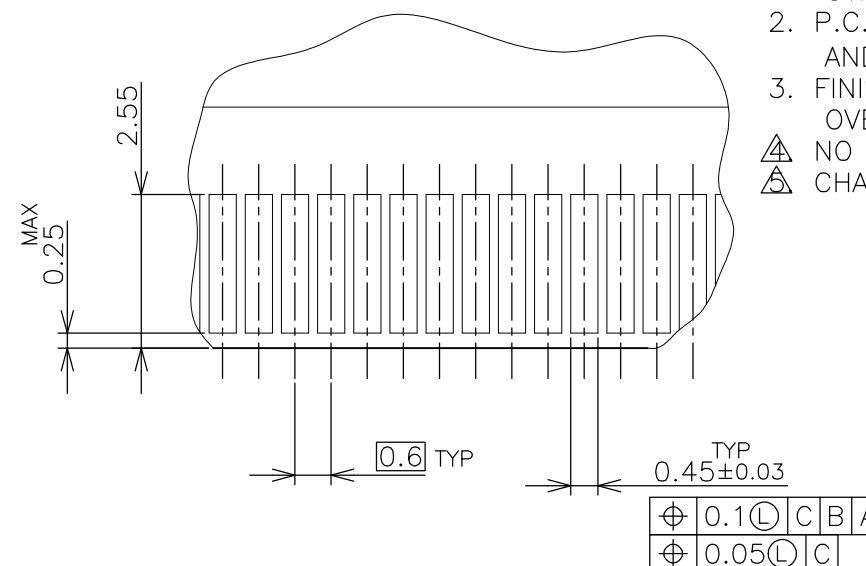
	DWN
--	-----

APVD

SEE SHEET 1

(APPLIED TO SHEET 4)

1. TOLERANCES ON ALL DIMENSIONS ± 0.15 UNLESS OTHERWISE SPECIFIED.
 2. P.C. BOARD THICKNESS APPLIES ACROSS TABS AND INCLUDES PLATING AND/OR METALIZATION.
 3. FINISH OF PAD : GOLD PLATING 0.00076 MIN. OVER Ni PLATING 0.002MIN.
- ④ NO BURR
- ⑤ CHAMFER 0.25 MAX x 45° IF EXIST.



30	CA
31.75	BA
25.4	AA
H	SDRAM VARIATIONS

	DWN
--	-----

CHK

APV

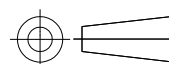
PRODUCT SPEC

APPLICATION SPEC

WEIGHT	WEIGHT
1	1
2	2
3	3
4	4
5	5
6	6
7	7
8	8
9	9
10	10
11	11
12	12
13	13
14	14
15	15
16	16
17	17
18	18
19	19
20	20
21	21
22	22
23	23
24	24
25	25
26	26
27	27
28	28
29	29
30	30
31	31
32	32
33	33
34	34
35	35
36	36
37	37
38	38
39	39
40	40
41	41
42	42
43	43
44	44
45	45
46	46
47	47
48	48
49	49
50	50
51	51
52	52
53	53
54	54
55	55
56	56
57	57
58	58
59	59
60	60
61	61
62	62
63	63
64	64
65	65
66	66
67	67
68	68
69	69
70	70
71	71
72	72
73	73
74	74
75	75
76	76
77	77
78	78
79	79
80	80
81	81
82	82
83	83
84	84
85	85
86	86
87	87
88	88
89	89
90	90
91	91
92	92
93	93
94	94
95	95
96	96
97	97
98	98
99	99
100	100

CUSTOMER DRAWING

DIMENSIONS:
MM



MATERIAL	QTY	UNIT	PRICE	TOTAL
1000	100	100	100	100
2000	200	200	200	200
3000	300	300	300	300
4000	400	400	400	400
5000	500	500	500	500
6000	600	600	600	600
7000	700	700	700	700
8000	800	800	800	800
9000	900	900	900	900
10000	1000	1000	1000	1000
11000	1100	1100	1100	1100
12000	1200	1200	1200	1200
13000	1300	1300	1300	1300
14000	1400	1400	1400	1400
15000	1500	1500	1500	1500
16000	1600	1600	1600	1600
17000	1700	1700	1700	1700
18000	1800	1800	1800	1800
19000	1900	1900	1900	1900
20000	2000	2000	2000	2000
21000	2100	2100	2100	2100
22000	2200	2200	2200	2200
23000	2300	2300	2300	2300
24000	2400	2400	2400	2400
25000	2500	2500	2500	2500
26000	2600	2600	2600	2600
27000	2700	2700	2700	2700
28000	2800	2800	2800	2800
29000	2900	2900	2900	2900
30000	3000	3000	3000	3000
31000	3100	3100	3100	3100
32000	3200	3200	3200	3200
33000	3300	3300	3300	3300
34000	3400	3400	3400	3400
35000	3500	3500	3500	3500
36000	3600	3600	3600	3600
37000	3700	3700	3700	3700
38000	3800	3800	3800	3800
39000	3900	3900	3900	3900
40000	4000	4000	4000	4000
41000	4100	4100	4100	4100
42000	4200	4200	4200	4200
43000	4300	4300	4300	4300
44000	4400	4400	4400	4400
45000	4500	4500	4500	4500
46000	4600	4600	4600	4600
47000	4700	4700	4700	4700
48000	4800	4800	4800	4800
49000	4900	4900	4900	4900
50000	5000	5000	5000	5000
51000	5100	5100	5100	5100
52000	5200	5200	5200	5200
53000	5300	5300	5300	5300
54000	5400	5400	5400	5400
55000	5500	5500	5500	5500
56000	5600	5600	5600	5600
57000	5700	5700	5700	5700
58000	5800	5800	5800	5800
59000	5900	5900	5900	5900
60000	6000	6000	6000	6000
61000	6100	6100	6100	6100
62000	6200	6200	6200	6200
63000	6300	6300	6300	6300
64000	6400	6400	6400	6400
65000	6500	6500	6500	6500
66000	6600	6600	6600	6600
67000	6700	6700	6700	6700
68000	6800	6800	6800	6800
69000	6900	6900	6900	6900
70000	7000	7000	7000	7000
71000	7100			

TOLERANCES UNLESS OTHERWISE SPECIFIED:

0	PLC
1	PLC
2	PLC
3	PLC
4	PLC
ANGLES	
FINISH	



TE Connectivity

	NAME
--	------

DDR3 SODIMM SOCKET

0.6mm PITCH 204POS

5.2mm HEIGHT STANDARD TYPE

	SIZE
--	------

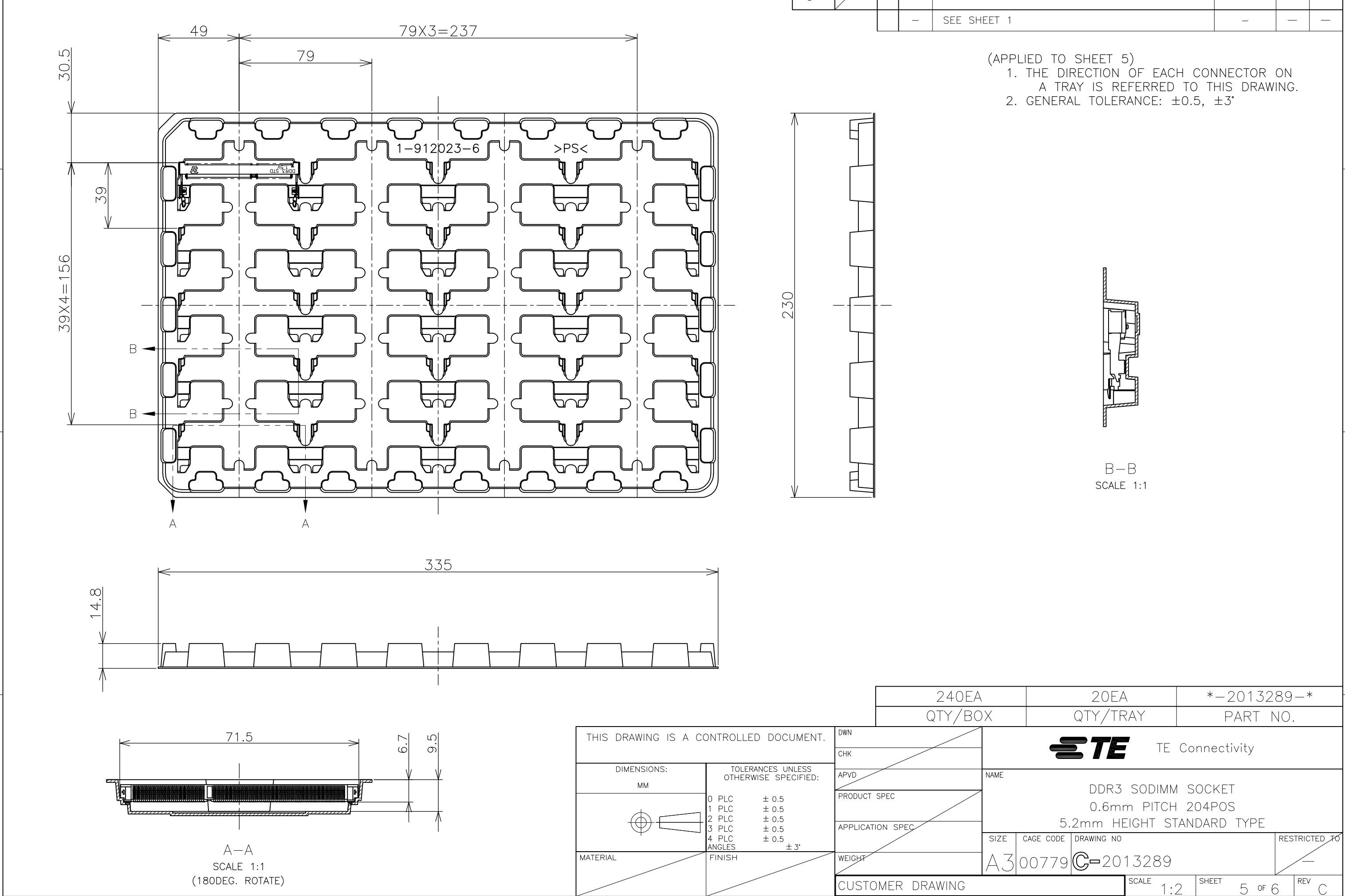
CAGE CODE	
-----------	--

E	DRAWING NO.
---	-------------

9 | C-2013289

RESTRICTED TO

REV	
-----	--



THIS DRAWING IS UNPUBLISHED.

RELEASED FOR PUBLICATION

SEP ,2007.

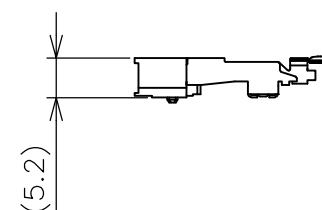
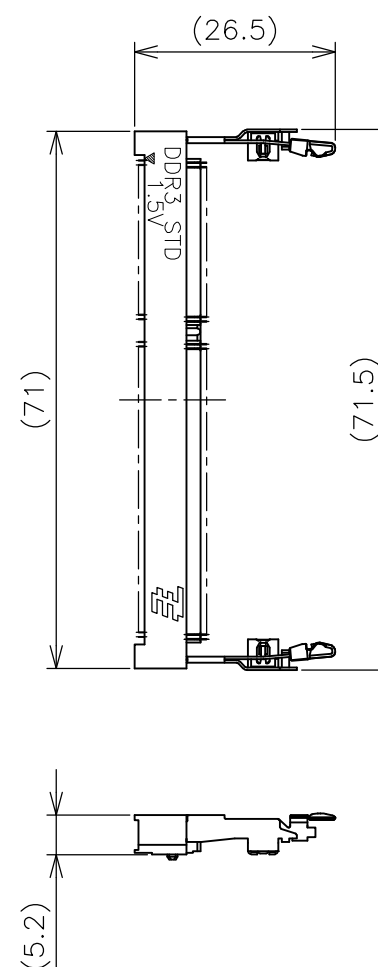
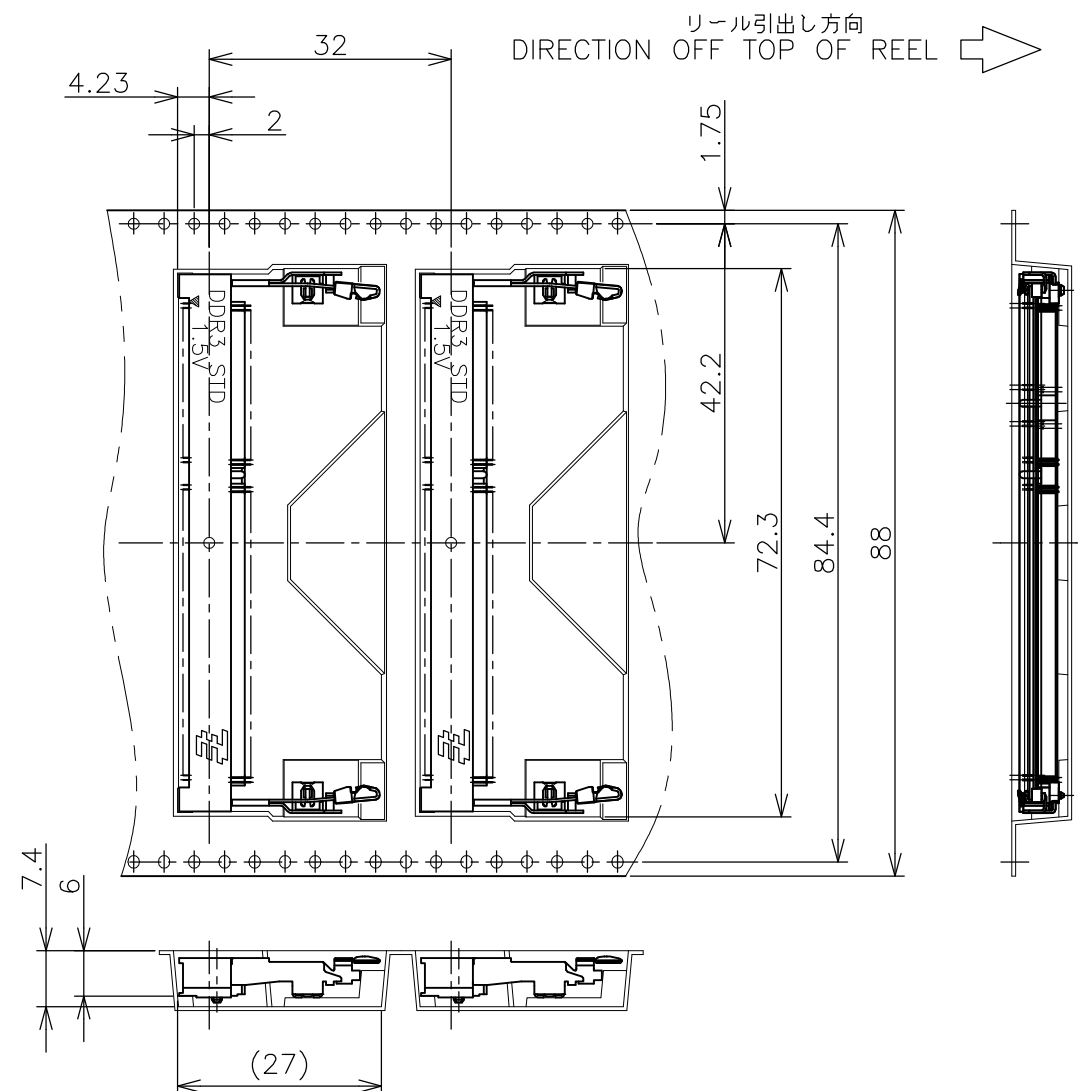
© COPYRIGHT 2007 By -

ALL RIGHTS RESERVED.

LOC
JDIST
/

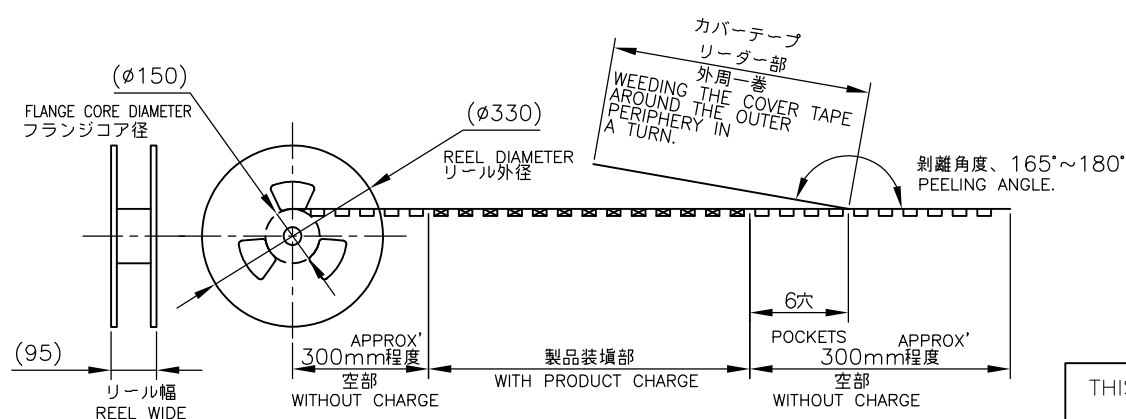
REVISIONS

P	LTR	DESCRIPTION	DATE	DWN	APVD
-	-	SEE SHEET 1	-	-	-



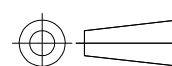
(APPLIED TO SHEET 6)

1. THE DIRECTION OF EACH CONNECTOR ON A EMBOSS IS REFERRED TO THIS DRAWING.
2. GENERAL TOLERANCE: ± 0.5 , $\pm 3^\circ$



FREE SCALE

THIS DRAWING IS A CONTROLLED DOCUMENT.

DIMENSIONS:
MM

MATERIAL

TOLERANCES UNLESS
OTHERWISE SPECIFIED:

0 PLC	± 0.5
1 PLC	± 0.5
2 PLC	± 0.5
3 PLC	± 0.5
4 PLC	± 0.5
ANGLES	$\pm 3^\circ$

FINISH

DWN

CHK

APVD

PRODUCT SPEC

APPLICATION SPEC

WEIGHT

CUSTOMER DRAWING

200EA

QTY/REEL

-2013289-

PART NO.

STE

TE Connectivity

NAME

DDR3 SODIMM SOCKET
0.6mm PITCH 204POS
5.2mm HEIGHT STANDARD TYPE

SIZE

CAGE CODE

DRAWING NO

RESTRICTED TO

A300779

C-2013289

SCALE 1:2

SHEET 6 OF 6

REV C

Mouser Electronics

Authorized Distributor

Click to View Pricing, Inventory, Delivery & Lifecycle Information:

[TE Connectivity:](#)

[2-2013289-1](#)