

THIS DRAWING IS UNPUBLISHED.

RELEASED FOR PUBLICATION

SEP ,2007.

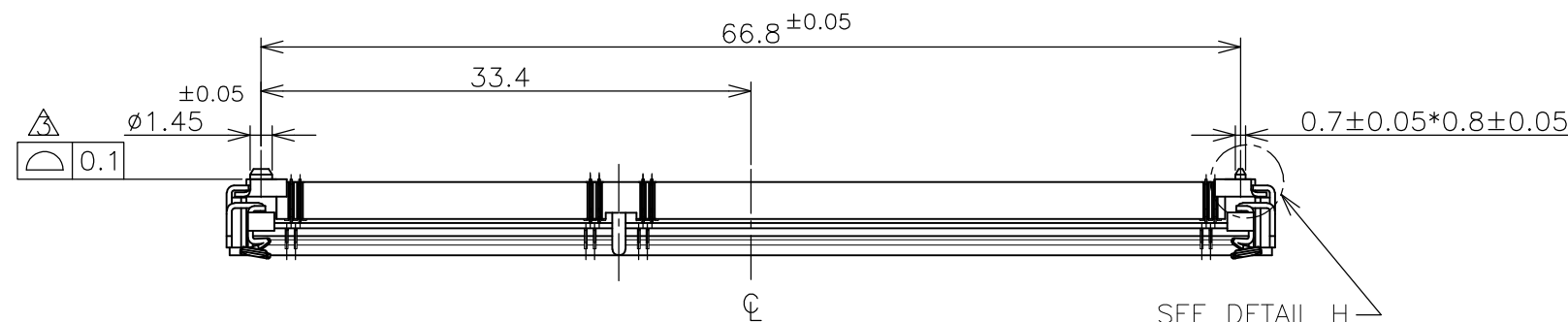
© COPYRIGHT 2007 By --

ALL RIGHTS RESERVED.

LOC  
JDIST  
/

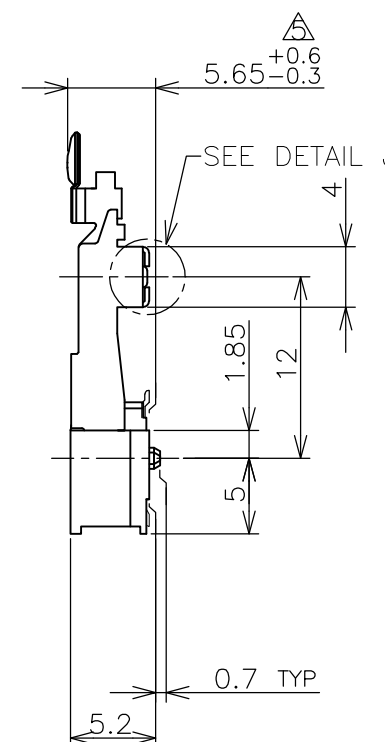
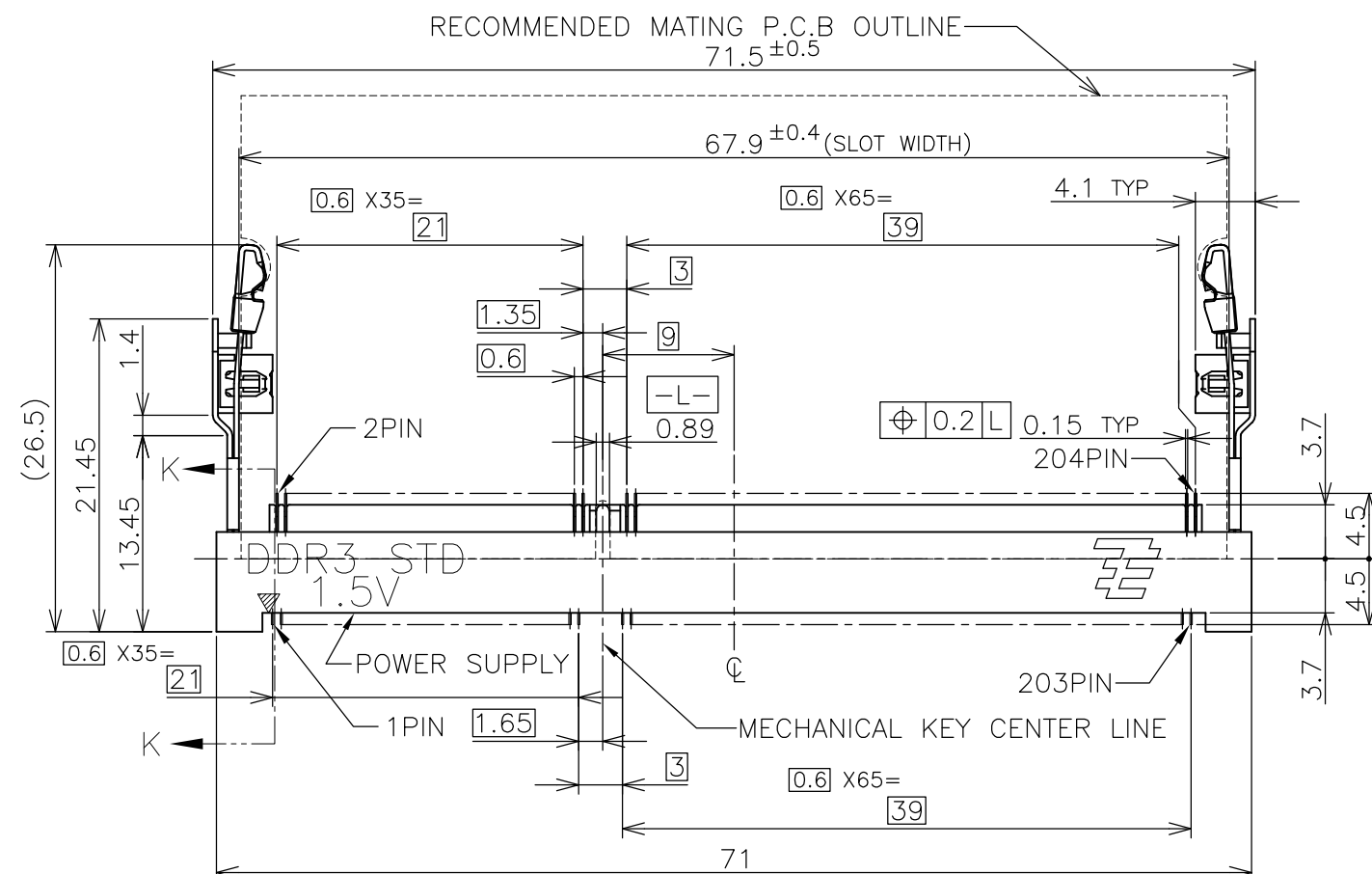
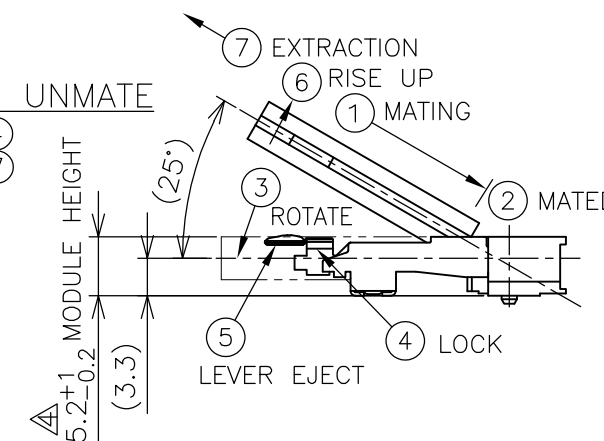
REVISIONS

P	LTR	DESCRIPTION	DATE	DWN	APVD
	C	REVISED PER ECR-12-004002	01MAR2012	W.W	C.W



## HOW TO MATE AND UNMATE

MATE: ① → ④  
UNMATE: ⑤ → ⑦



(APPLIED TO SHEET 1-3)

1. MATERIAL ; HOUSING: HIGH TEMPERATURE THERMO PLASTIC UL94V-0  
COLOR: BLACK  
CONTACT: COPPER ARROY  
LOCK LEVER: STAINLESS STEEL  
PEG: COPPER ARROY

2-1. FINISH ; CONTACT AREA: GOLD FLASH  
ALL OVER NICKEL.  
SOLDERING AREA: GOLD FLASH PLATING  
PEG: TIN PLATING

2-2. FINISH ; CONTACT AREA: 0.000254MIN GOLD  
ALL OVER NICKEL.  
SOLDERING AREA: GOLD FLASH PLATING  
PEG: TIN PLATING

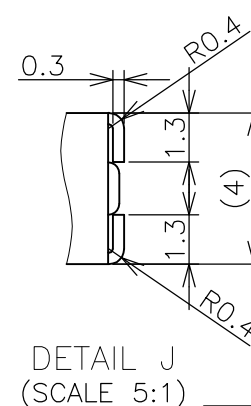
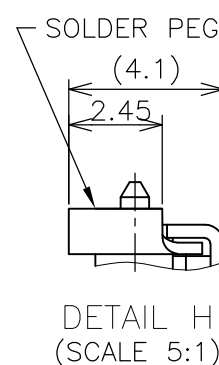
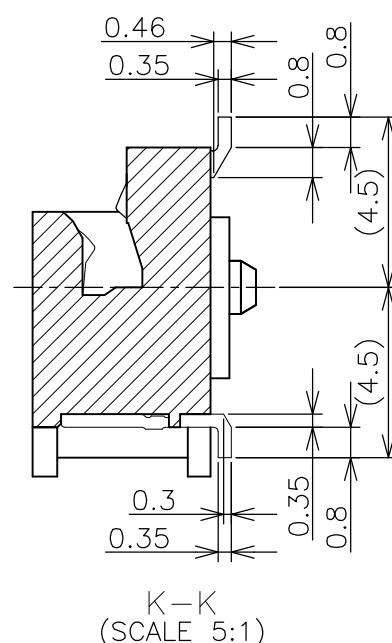
2-3. FINISH ; CONTACT AREA: 0.00076MIN GOLD  
ALL OVER NICKEL.  
SOLDERING AREA: GOLD FLASH PLATING  
PEG: TIN PLATING

△ COPLANARITY: 0.1 MAX. (BEFORE SOLDERING)

△ THE FLOATING VALUE BY SOLDERING IS NOT INCLUDED.

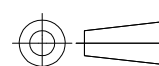
△ NOT MATING CONDITION.

6. IF THE MODULE DOESN'T INSERT AND LOCK IN THE LATCH SMOOTHLY,  
OPEN WIDE BOTH LATCHES BY MANUAL. AND THE MODULE MUST BE  
INSERTED AND LOCKED IN THE LATCH.



GENERAL TOLERANCE  
10 ≥ ±0.2  
30 ≥ >10: ±0.25  
100 ≥ >30: ±0.3  
ANGLES: ±3°

THIS DRAWING IS A CONTROLLED DOCUMENT.

DIMENSIONS:  
MM

MATERIAL

TOLERANCES UNLESS  
OTHERWISE SPECIFIED:

0 PLC ±  
1 PLC ±  
2 PLC ±  
3 PLC ±  
4 PLC ±  
ANGLES ±  
FINISH ±

DWN T.FUMIKURA 18SEP2007

CHK K.IKEGAMI 18SEP2007

APVD K.IKEGAMI 18SEP2007

PRODUCT SPEC

108-78493

APPLICATION SPEC

WEIGHT 4.4g

CUSTOMER DRAWING

TE

TE Connectivity

NAME

DDR3 SODIMM SOCKET  
0.6mm PITCH 204POS  
5.2mm HEIGHT STANDARD TYPE

SIZE

CAGE CODE

DRAWING NO

RESTRICTED TO

A300779

C-2013289

SCALE 2:1

SHEET 1 OF 6

REV C

4

3

2

1

THIS DRAWING IS UNPUBLISHED.	RELEASED FOR PUBLICATION	SEP ,2007.
© COPYRIGHT 2007 By -		ALL RIGHTS RESERVED.

LOC J	DIST —	REVISIONS					
		P	LTR	DESCRIPTION	DATE	DWN	APVD
		—		SEE SHEET 1	—	—	—

AVAILABLE	ENBOSS (SEE SHEET 6)	WITH BOSS	BLACK	NOTE 2-3	1.5V	204	2-2013289-3
AVAILABLE	ENBOSS (SEE SHEET 6)	WITH BOSS	BLACK	NOTE 2-2	1.5V	204	2-2013289-2
AVAILABLE	ENBOSS (SEE SHEET 6)	WITH BOSS	BLACK	NOTE 2-1	1.5V	204	2-2013289-1
AVAILABLE	SEMI-HARD TRAY (SEE SHEET 5)	WITH BOSS	BLACK	NOTE 2-3	1.5V	204	2013289-3
AVAILABLE	SEMI-HARD TRAY (SEE SHEET 5)	WITH BOSS	BLACK	NOTE 2-2	1.5V	204	2013289-2
AVAILABLE	SEMI-HARD TRAY (SEE SHEET 5)	WITH BOSS	BLACK	NOTE 2-1	1.5V	204	2013289-1
TOOLING STATUS	PACKAGING TYPE	BOSS TYPE	HOUSING COLOR	FINISH	POWER SUPPLY	POS	PART NO.

<div>THIS DRAWING IS A CONTROLLED DOCUMENT.</div> <div><div>DIMENSIONS: MM</div><div></div><div>MATERIAL</div></div>	<div>TOLERANCES UNLESS OTHERWISE SPECIFIED:</div> <div>0 PLC ±</div> <div>1 PLC ±</div> <div>2 PLC ±</div> <div>3 PLC ±</div> <div>4 PLC ±</div> <div>ANGLES ±</div> <div>FINISH</div>	DWN	<div> TE Connectivity</div> <div>NAME</div> <div>DDR3 SODIMM SOCKET 0.6mm PITCH 204POS 5.2mm HEIGHT STANDARD TYPE</div>							
		CHK					SIZECAGE CODEDRAWING NORESTRICTED TO			
		APVD								
		PRODUCT SPEC	SCALE2:1SHEET2 OF 6REV C							
		APPLICATION SPEC								
		WEIGHT	CUSTOMER DRAWING							

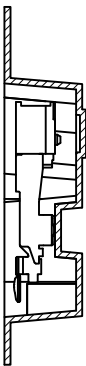
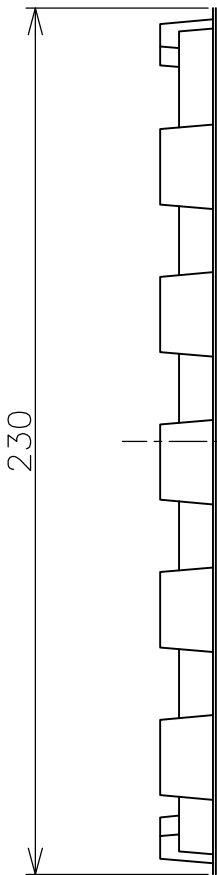
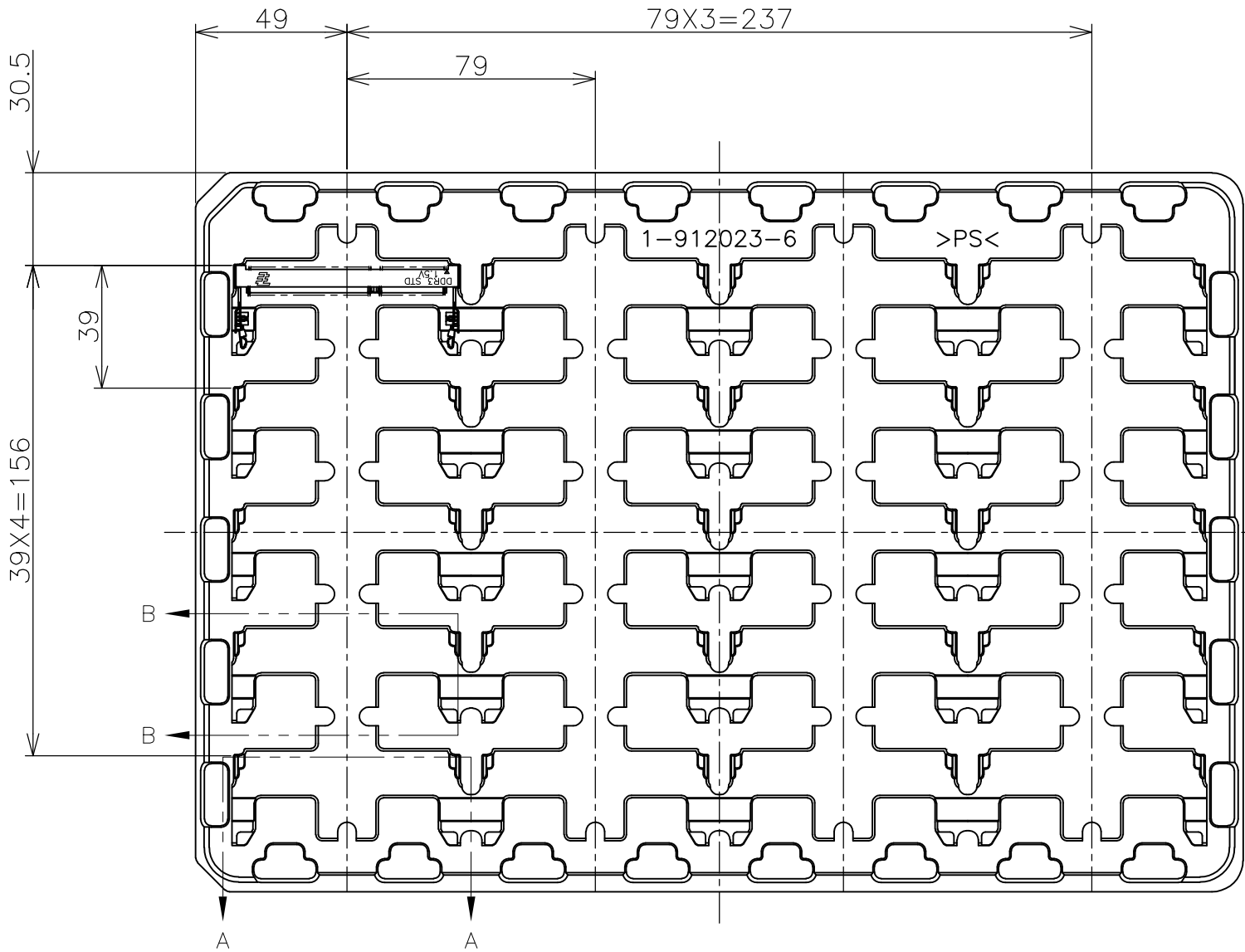


## REVISIONS

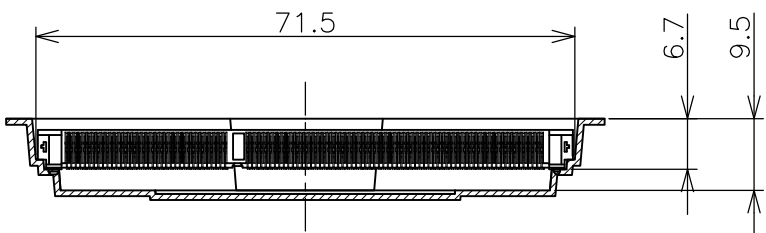
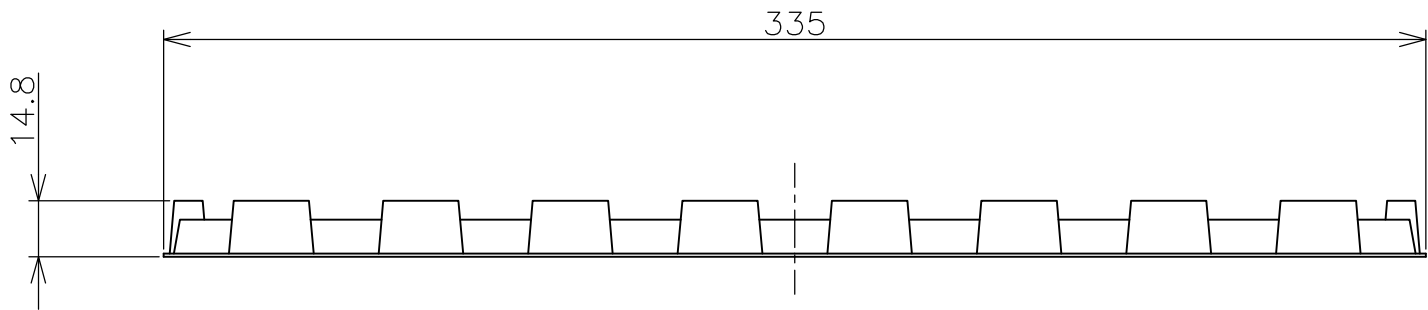
A

2		1				
LOC	DIST	REVISIONS				
P	LTR	DESCRIPTION		DATE	DWN	APVD
	-	SEE SHEET 1		-	-	-

- (APPLIED TO SHEET 5)
1. THE DIRECTION OF EACH CONNECTOR ON A TRAY IS REFERRED TO THIS DRAWING.
  2. GENERAL TOLERANCE:  $\pm 0.5$ ,  $\pm 3^\circ$



B-B  
SCALE 1:1



A-A  
SCALE 1:1  
(180DEG. ROTATE)

THIS DRAWING IS A CONTROLLED DOCUMENT.

DIMENSIONS: MM		TOLERANCES UNLESS OTHERWISE SPECIFIED:	
		0 PLC	$\pm 0.5$
		1 PLC	$\pm 0.5$
		2 PLC	$\pm 0.5$
		3 PLC	$\pm 0.5$
		4 PLC	$\pm 0.5$
MATERIAL		ANGLES	$\pm 3^\circ$
		FINISH	

DWN	TE Connectivity				
CHK					
APVD					
PRODUCT SPEC					
APPLICATION SPEC	NAME DDR3 SODIMM SOCKET 0.6mm PITCH 204POS 5.2mm HEIGHT STANDARD TYPE				
WEIGHT	SIZE	CAGE CODE	DRAWING NO	RESTRICTED TO	
CUSTOMER DRAWING	A3	00779	C-2013289	-	
SCALE 1:2			SHEET 5 of 6	REV C	

THIS DRAWING IS UNPUBLISHED.

RELEASED FOR PUBLICATION

SEP ,2007.

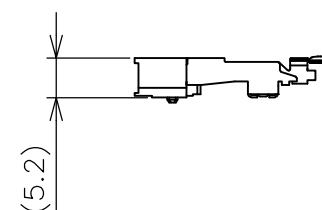
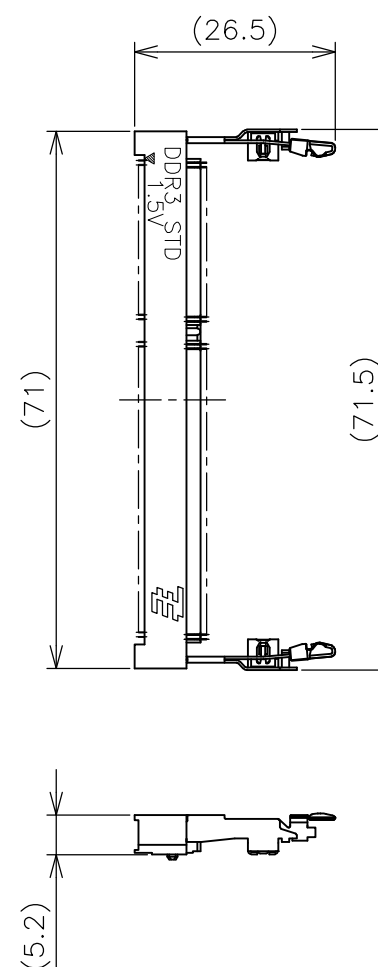
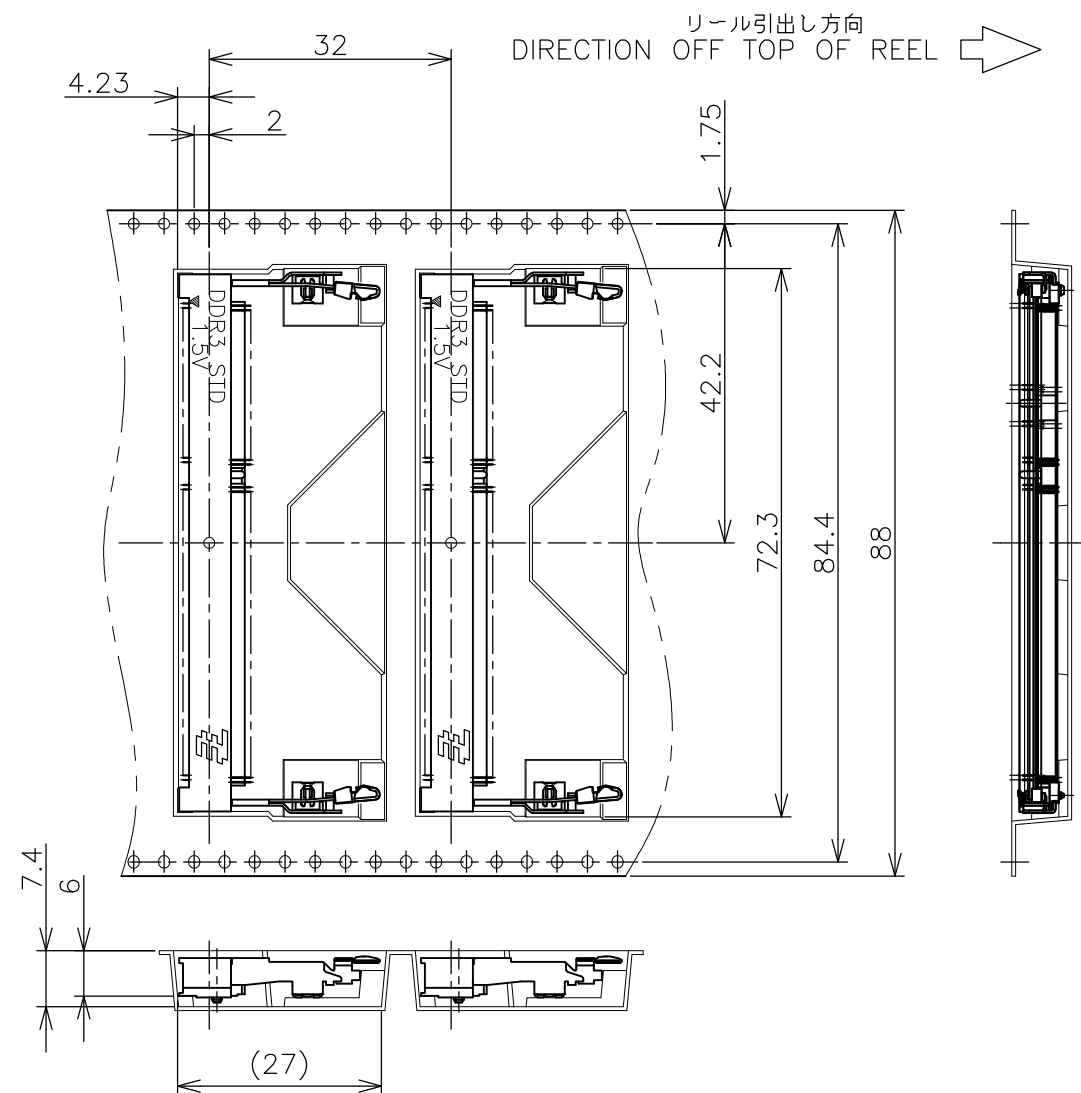
© COPYRIGHT 2007 By -

ALL RIGHTS RESERVED.

LOC  
JDIST  
/

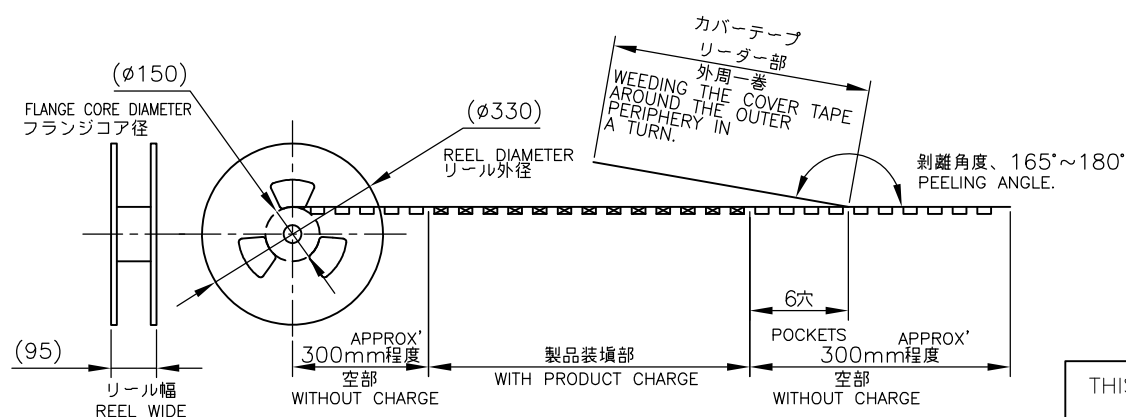
REVISIONS

P	LTR	DESCRIPTION	DATE	DWN	APVD
-	-	SEE SHEET 1	-	-	-



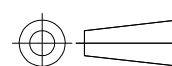
(APPLIED TO SHEET 6)

1. THE DIRECTION OF EACH CONNECTOR ON A EMBOSS IS REFERRED TO THIS DRAWING.
2. GENERAL TOLERANCE:  $\pm 0.5$ ,  $\pm 3^\circ$



FREE SCALE

THIS DRAWING IS A CONTROLLED DOCUMENT.

DIMENSIONS:  
MM

MATERIAL

TOLERANCES UNLESS  
OTHERWISE SPECIFIED:

0 PLC	$\pm 0.5$
1 PLC	$\pm 0.5$
2 PLC	$\pm 0.5$
3 PLC	$\pm 0.5$
4 PLC	$\pm 0.5$
ANGLES	$\pm 3^\circ$

FINISH

DWN

CHK

APVD

PRODUCT SPEC

APPLICATION SPEC

WEIGHT

CUSTOMER DRAWING

200EA

QTY/REEL

\*—2013289—\*

PART NO.

**STE**

TE Connectivity

NAME

DDR3 SODIMM SOCKET  
0.6mm PITCH 204POS  
5.2mm HEIGHT STANDARD TYPE

SIZE

CAGE CODE

DRAWING NO

RESTRICTED TO

A300779

C—2013289

SCALE 1:2

SHEET 6 OF 6

REV C

# Mouser Electronics

Authorized Distributor

Click to View Pricing, Inventory, Delivery & Lifecycle Information:

[TE Connectivity:](#)

[2-2013289-3](#)