

4

3

2

1

LOC	DIST	REVISIONS				
		P	LTR	DESCRIPTION	DATE	APVD
J			-	SEE SHEET 1	-	-

AVAILABLE	ENBOSS (SEE SHEET 6)	WITH BOSS	BLACK	NOTE 2-3	1.5V	204	2-2013289-3
AVAILABLE	ENBOSS (SEE SHEET 6)	WITH BOSS	BLACK	NOTE 2-2	1.5V	204	2-2013289-2
AVAILABLE	ENBOSS (SEE SHEET 6)	WITH BOSS	BLACK	NOTE 2-1	1.5V	204	2-2013289-1
AVAILABLE	SEMI-HARD TRAY (SEE SHEET 5)	WITH BOSS	BLACK	NOTE 2-3	1.5V	204	2013289-3
AVAILABLE	SEMI-HARD TRAY (SEE SHEET 5)	WITH BOSS	BLACK	NOTE 2-2	1.5V	204	2013289-2
AVAILABLE	SEMI-HARD TRAY (SEE SHEET 5)	WITH BOSS	BLACK	NOTE 2-1	1.5V	204	2013289-1
TOOLING STATUS	PACKAGING TYPE	BOSS TYPE	HOUSING COLOR	FINISH	POWER SUPPLY	POS	PART NO.

THIS DRAWING IS A CONTROLLED DOCUMENT.

DIMENSIONS:
MM

MATERIAL

TOLERANCES UNLESS OTHERWISE SPECIFIED:

0 PLC ±
1 PLC ±
2 PLC ±
3 PLC ±
4 PLC ±
ANGLES ±
FINISH

DWN

CHK

APVD

PRODUCT SPEC

APPLICATION SPEC

WEIGHT

CUSTOMER DRAWING

NAME

DDR3 SODIMM SOCKET
0.6mm PITCH 204POS
5.2mm HEIGHT STANDARD TYPE

SIZE

CAGE CODE

DRAWING NO

RESTRICTED TO

SCALE

SHEET

REV

TE Connectivity

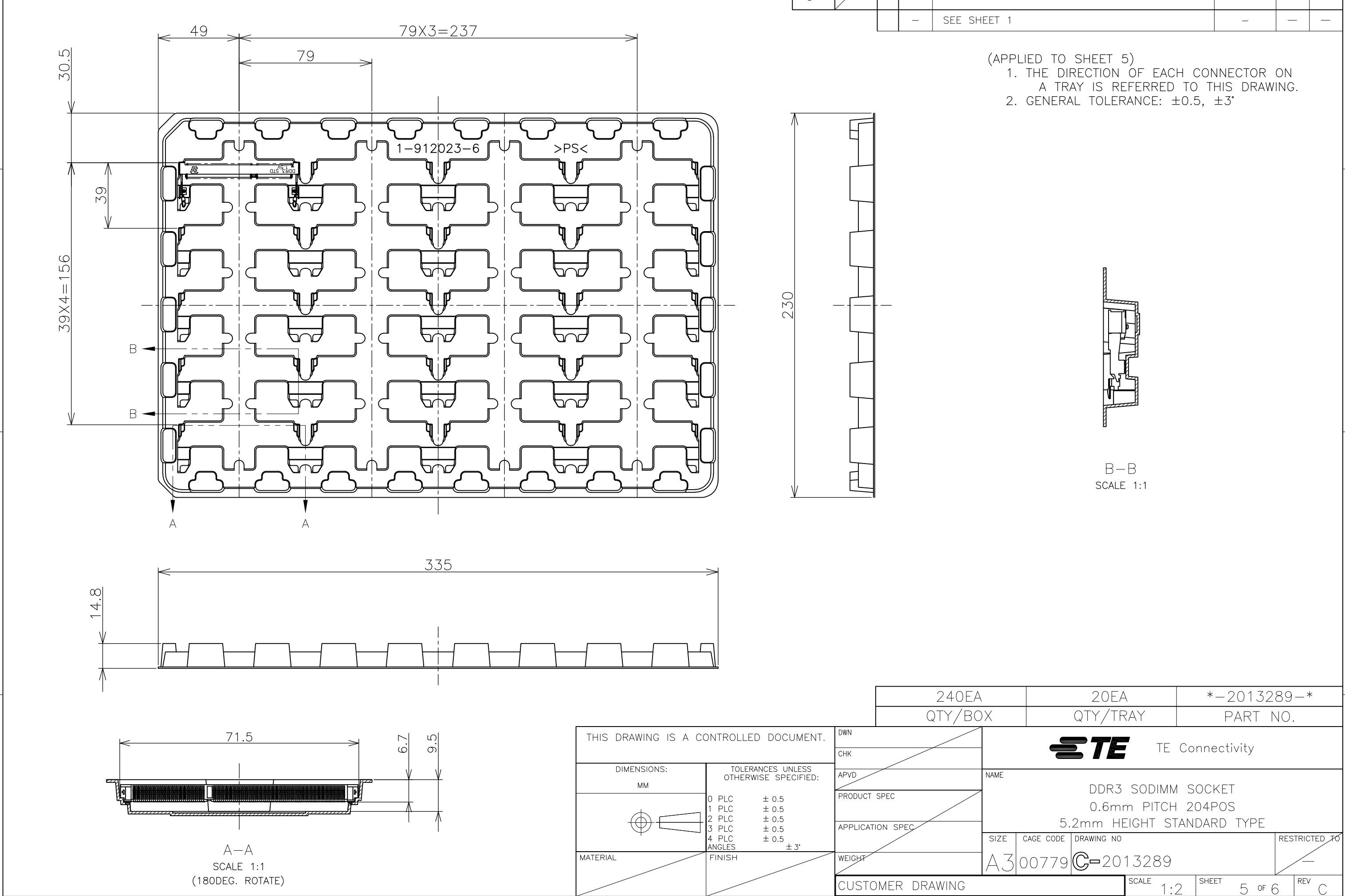
A300779C-2013289

2:12 of 6C

1470-19 (3/11)

REVISIONS

1470-19 (3/11)



THIS DRAWING IS UNPUBLISHED.

RELEASED FOR PUBLICATION

SEP ,2007.

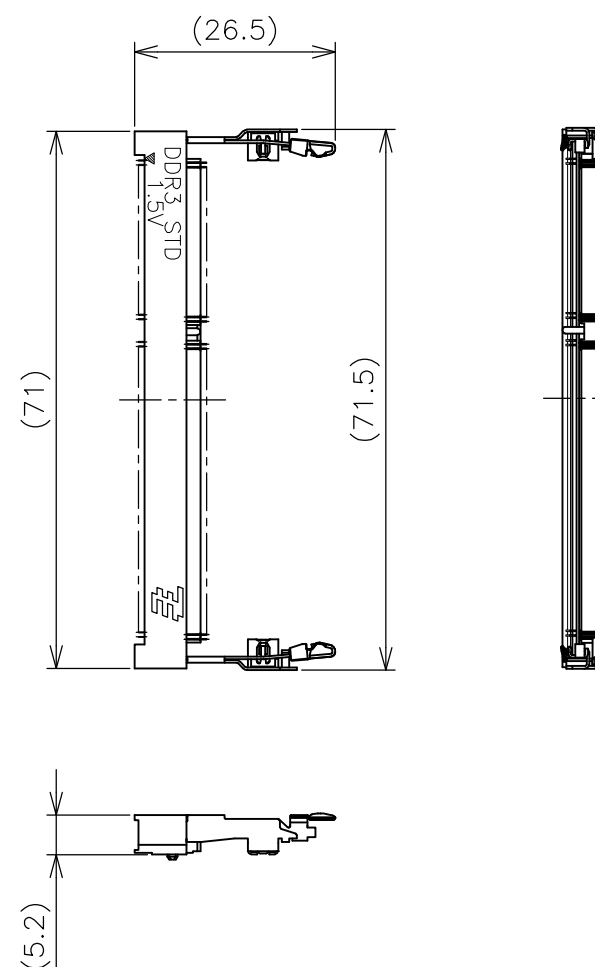
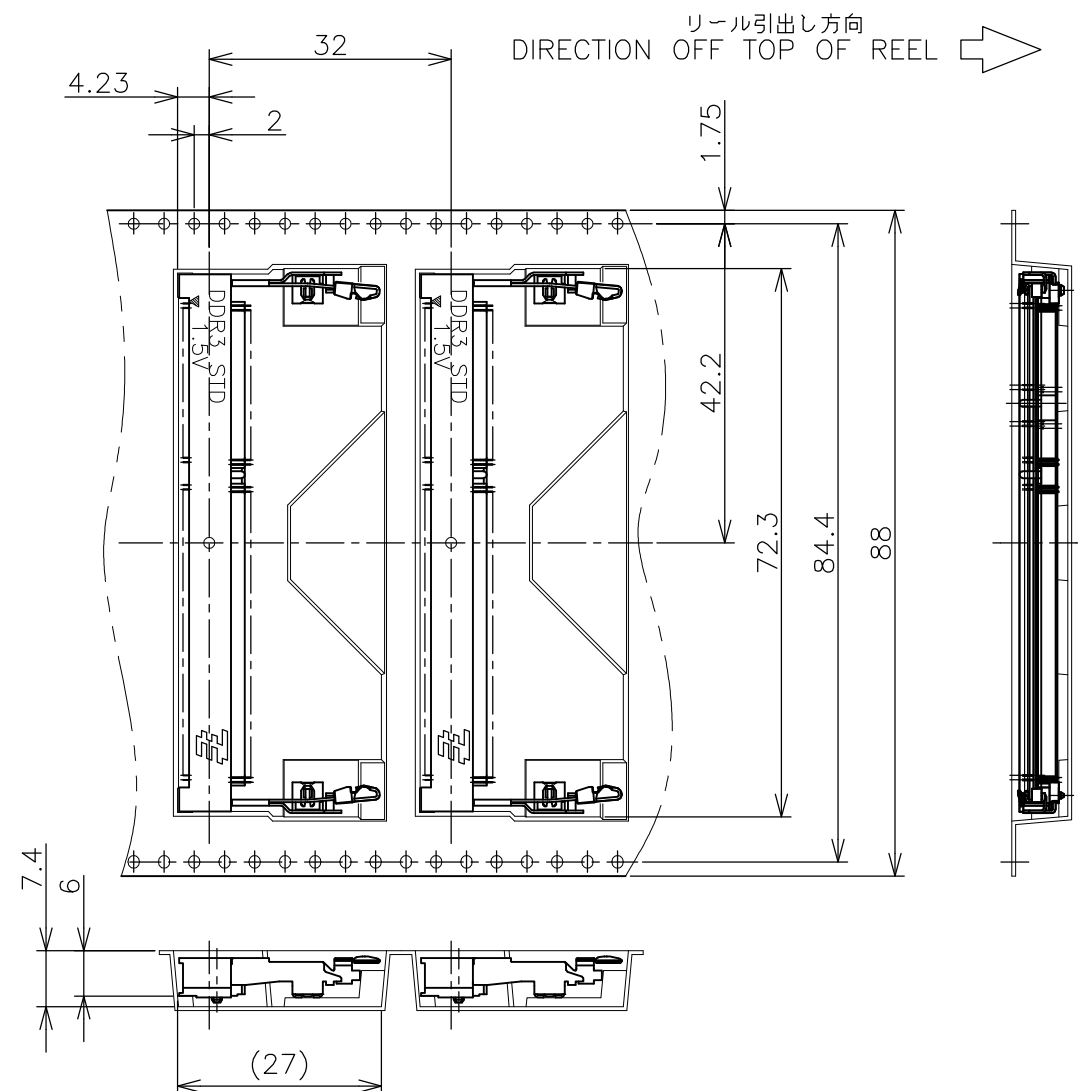
© COPYRIGHT 2007 By -

ALL RIGHTS RESERVED.

LOC
JDIST
/

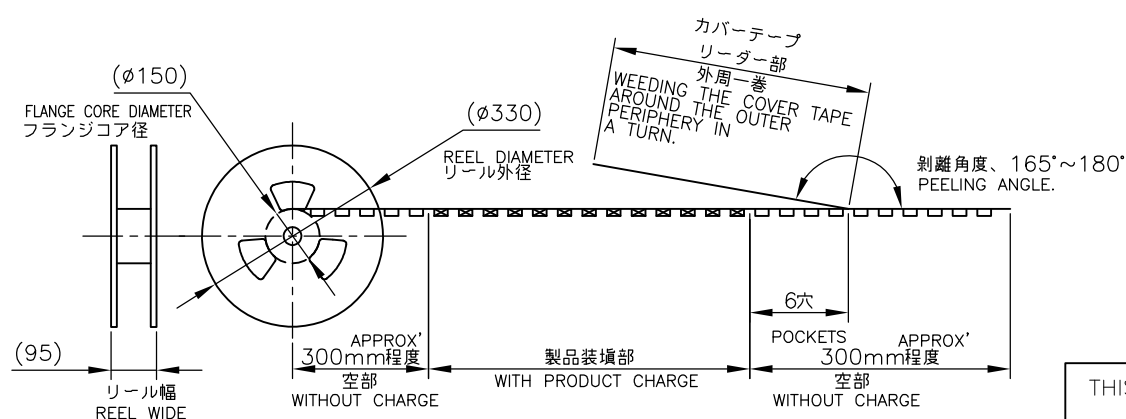
REVISIONS

P	LTR	DESCRIPTION	DATE	DWN	APVD
-	-	SEE SHEET 1	-	-	-



(APPLIED TO SHEET 6)

1. THE DIRECTION OF EACH CONNECTOR ON A EMBOSS IS REFERRED TO THIS DRAWING.
2. GENERAL TOLERANCE: ± 0.5 , $\pm 3^\circ$

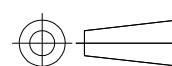


FREE SCALE

THIS DRAWING IS A CONTROLLED DOCUMENT.

DIMENSIONS:

MM



TOLERANCES UNLESS OTHERWISE SPECIFIED:

0 PLC	± 0.5
1 PLC	± 0.5
2 PLC	± 0.5
3 PLC	± 0.5
4 PLC	± 0.5
ANGLES	$\pm 3^\circ$

FINISH

MATERIAL

DWN

CHK

APVD

PRODUCT SPEC

APPLICATION SPEC

WEIGHT

CUSTOMER DRAWING

200EA

QTY/REEL

—2013289—

PART NO.

STE

TE Connectivity

NAME

DDR3 SODIMM SOCKET
0.6mm PITCH 204POS
5.2mm HEIGHT STANDARD TYPE

SIZE

CAGE CODE

DRAWING NO

RESTRICTED TO

A3 00779

C—2013289

SCALE 1:2

SHEET 6 OF 6

REV C

Mouser Electronics

Authorized Distributor

Click to View Pricing, Inventory, Delivery & Lifecycle Information:

[TE Connectivity:](#)

[2-2013289-2](#)