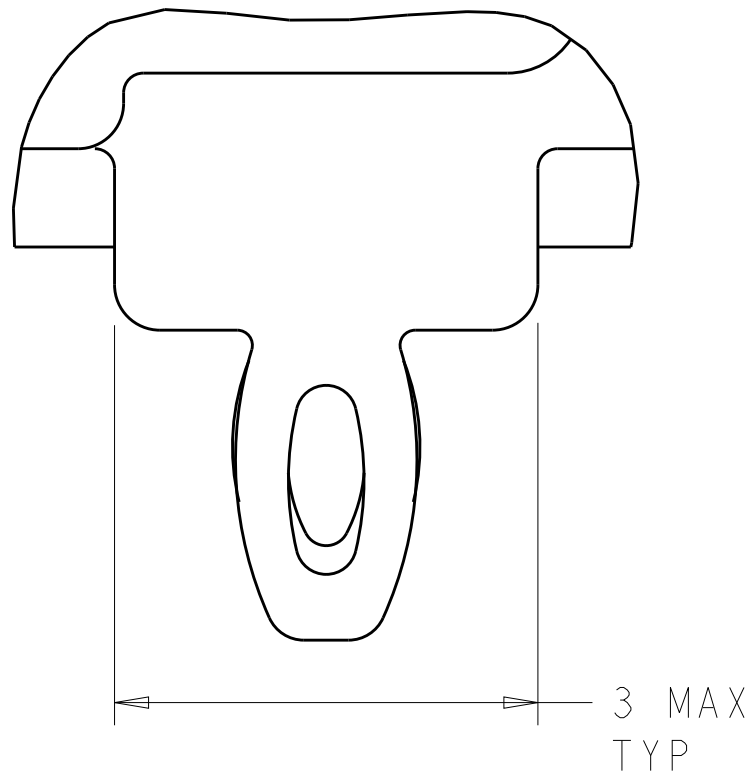


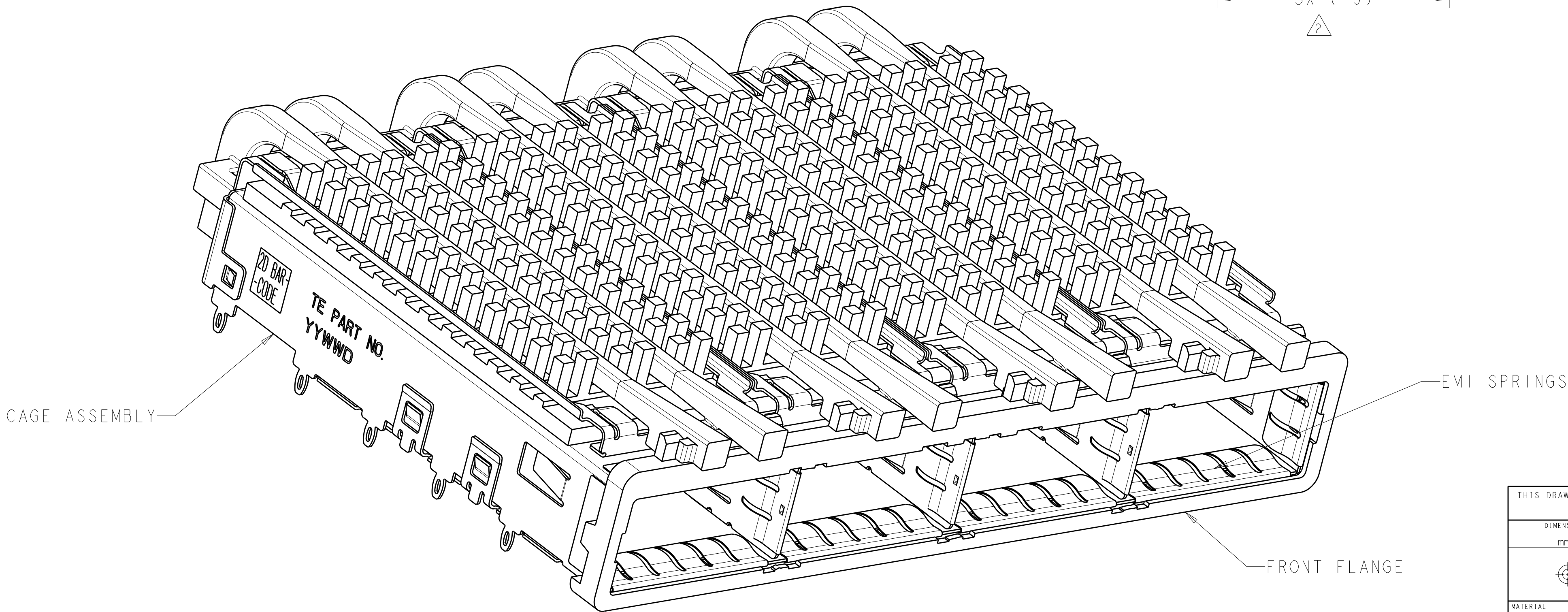
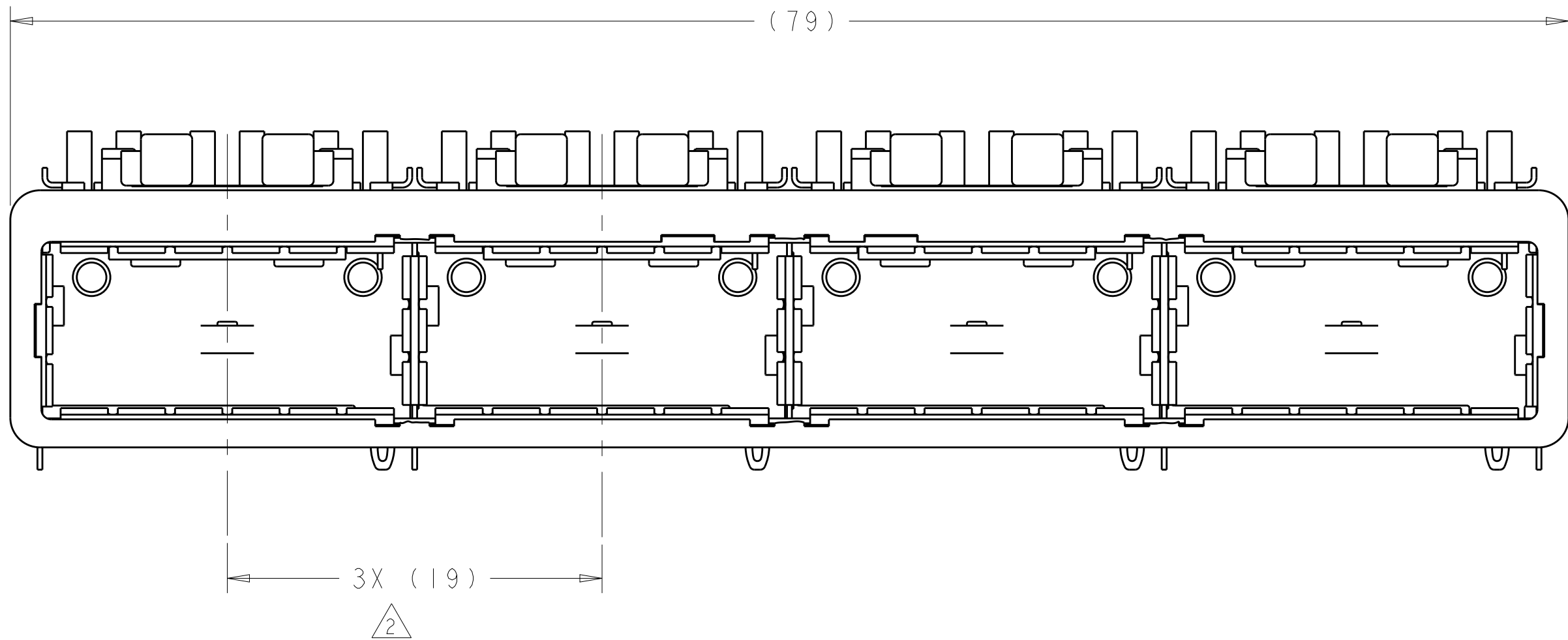
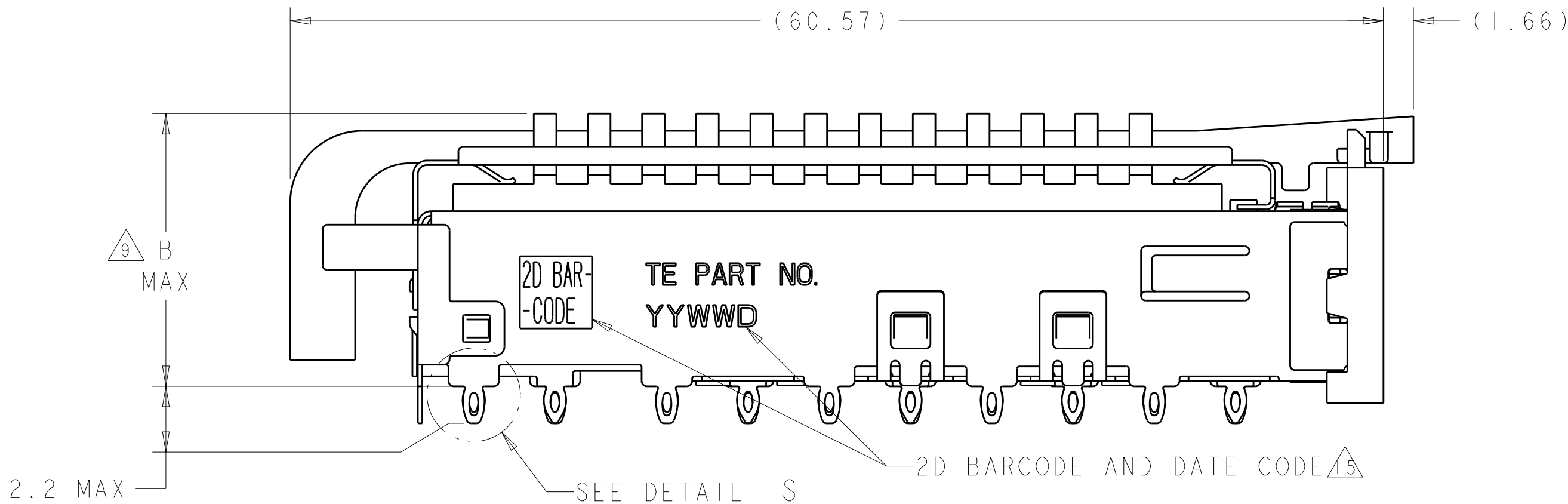
| LOC | DIST | REVISIONS | | | | | |
|-----|------|-----------|-----|---------------------------|-----------|-----|------|
| | | P | LTR | DESCRIPTION | DATE | DWN | APVD |
| GP | 00 | | D | REVISED PER ECO-12-003841 | 14MAR2012 | TY | KS |
| | | | E | REVISED PER ECO-12-005533 | 31MAR2012 | JY | AC |
| | | | F | REVISED PER ECO-14-017735 | 30DEC2014 | RG | MC |
| | | | | | | | |





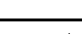
DETAIL S
SCALE 20:1

- 1 CAGE ASSEMBLY MATERIAL: NICKEL SILVER, 0.25 THICK
HEAT SINK MATERIAL: ALUMINUM
HEAT SINK CLIP MATERIAL: STAINLESS STEEL
EMI SPRING MATERIAL: COPPER ALLOY
FRONT FLANGE MATERIAL: ZINC ALLOY
LIGHT PIPE MATERIAL: CLEAR POLYCARBONATE
- 2 PITCH BETWEEN PORTS OF ONE 1X4 CAGE ASSEMBLY.
- 3 SPACING BETWEEN CAGES ON THE SAME PC BOARD, TO BE SPECIFIED BY CUSTOMER, MUST COMPLY WITH MINIMUM DIMENSIONS SHOWN.
- 4 REFERENCE APPLICATION SPEC 114-13218 FOR RECOMMENDED DRILL HOLE DIAMETER AND PLATING THICKNESS.
- 5 DATUMS AND BASIC DIMENSIONS ESTABLISHED BY CUSTOMER.
- 6 DIMENSION C IS THE NOMINAL THICKNESS OF CUSTOMER SUPPLIED PC BOARD, SINGLE SIDED PC BOARD MINIMUM THICKNESS = 1.45mm
DOUBLE SIDED PC BOARD MINIMUM THICKNESS = 2.2mm PER QSFP.
- 7 HEAT SINKS, LIGHT PIPES, AND CLIP SHIPPED ASSEMBLED TO CAGE ASSEMBLY. CAGE ASSEMBLY MAY BE PRESSED INTO THE PCB AS SHIPPED.
- 8 DATUM -A- IS TOP SURFACE OF PC BOARD.
- 9 DIMENSION APPLIES WITH MODULE INSERTED IN CAGE.
- 10 UNPLATED THRU HOLE.
- 11 MAXIMUM HEIGHT OF LED OFF BOARD: 0.9mm.
12. MATES WITH QSFP MSA COMPATIBLE TRANSCEIVER.
- 13 SURFACE TRACES PERMITTED WITHIN THIS AREA EXCEPT WHERE CAGE STANDOFFS, SHOWN IN DETAIL S, CONTACT PC BOARD.
- 14 BASELINE FOR THESE DIMENSIONS IS THE CENTER OF COMPLIANT PIN HOLE.

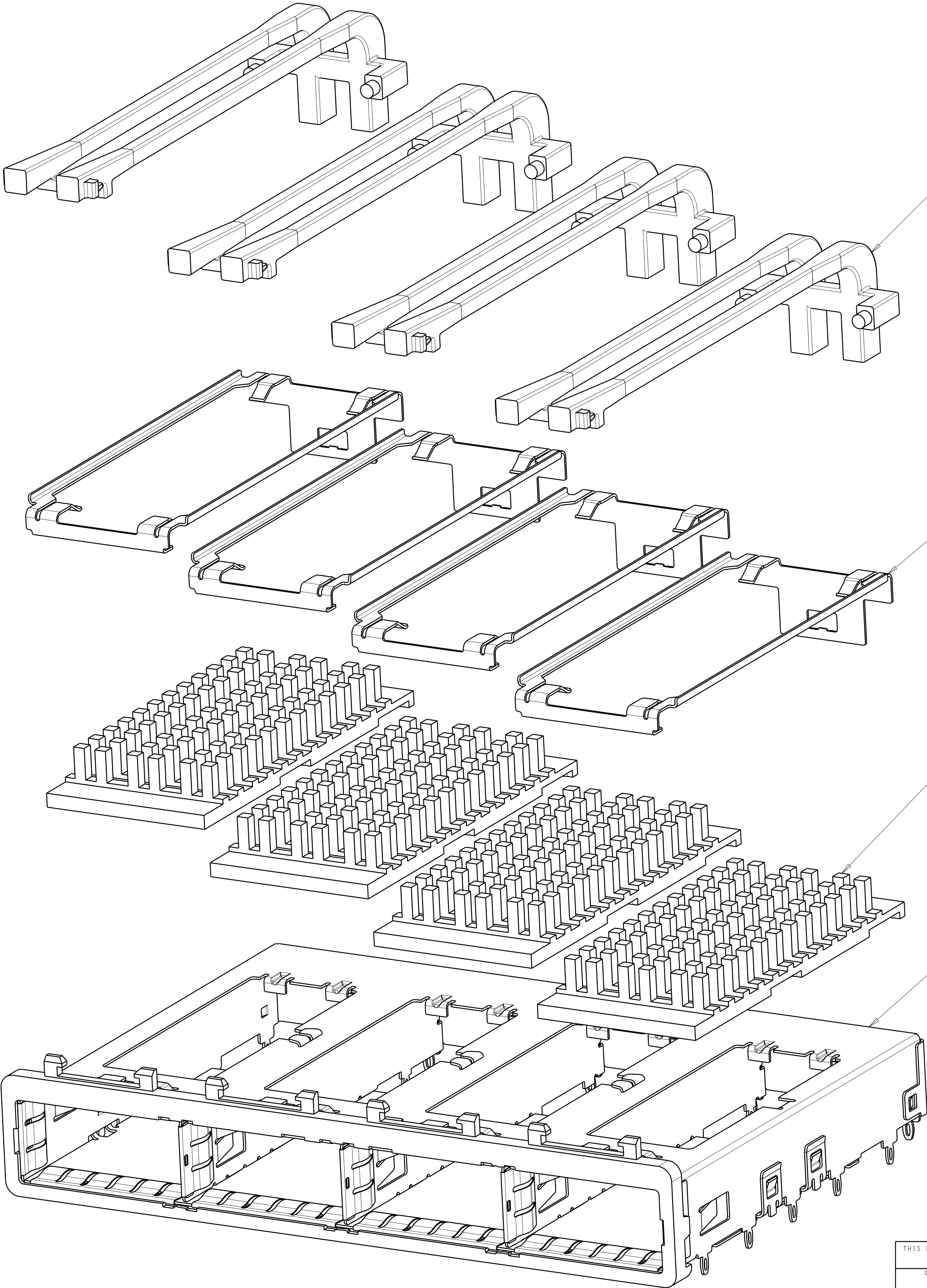
- 15 2D BARCODE AND DATE CODE (YYWW) MARKED ON SIDE OF CAGE ASSEMBLY.
- 16 REFERENCE APP SPEC 114-13218 FOR GASKET THICKNESS CALCULATION.
- 17 EMI SPRING FINISH: 2µm MINIMUM TIN
FRONT FLANGE FINISH: 3µm MINIMUM TIN OVER 1.27µm MINIMUM NICKEL OVER 5.08µm MINIMUM COPPER
HEAT SINK FINISH: NICKEL.
- 18 HEAT SINKS AND CLIPS SHIPPED ASSEMBLED TO CAGE ASSEMBLY. CAGE ASSEMBLY MAY BE PRESSED INTO THE PCB AS SHIPPED. LIGHT PIPES, SHIPPED UNATTACHED, MUST BE ASSEMBLED BY CUSTOMER AFTER THE CAGE IS SEATED IN THE PCB.



| | | | |
|---|------|-------------------|-------------|
| B | 13.7 | PCI | 2007626-3 |
| | 23.0 | NETWORKING | 2007626-2 |
| | 16.0 | SAN | 2007626-1 |
| | B | HEAT SINK PROFILE | PART NUMBER |

| | | | | | |
|---|--|---------------------------|---|--|-----------------|
| THIS DRAWING IS A CONTROLLED DOCUMENT. | | OWN C. VALENTIN 28FEB2008 |  TE Connectivity | | |
| DIMENSIONS: | | CHK E. BRIGHT 28FEB2008 | | | |
| mm | TOLERANCES UNLESS OTHERWISE SPECIFIED: | APVD F. BRIGHT 28FEB2008 | NAME 1X4 CAGE ASSEMBLY, BEHIND BEZEL, W/ SQUARE LIGHT PIPES AND HEAT SINKS, QSFP | SIZE CAGE CODE DRAWING NO A100779C=2007626 | RESTRICTED TO - |
| | | PRODUCT SPEC 108-2286 | | | |
|  | 0.1 PLC ±.1 1.1 PLC ±.1 2.1 PLC ±.1 4.1 PLC ±.1 ANGLES ±.1 | APPLICATION SPEC | | | |
| | | WEIGHT - | | | |
| MATERIAL | FINISH  | CUSTOMER DRAWING | SCALE 1:1 SHEET 1 OF 5 REV F | | |

| LOC | | DIST | | REVISONS | | | |
|-----|--|------|--|----------|-----|-------------|------|
| GP | | 00 | | P | LTR | DESCRIPTION | DATE |
| | | | | - | - | SEE SHEET 1 | - |
| | | | | | | | |
| | | | | | | | |
| | | | | | | | |
| | | | | | | | |



SQUARE DOUBLE LIGHT PIPES $\triangle 7/8$
QUANTITY: 4

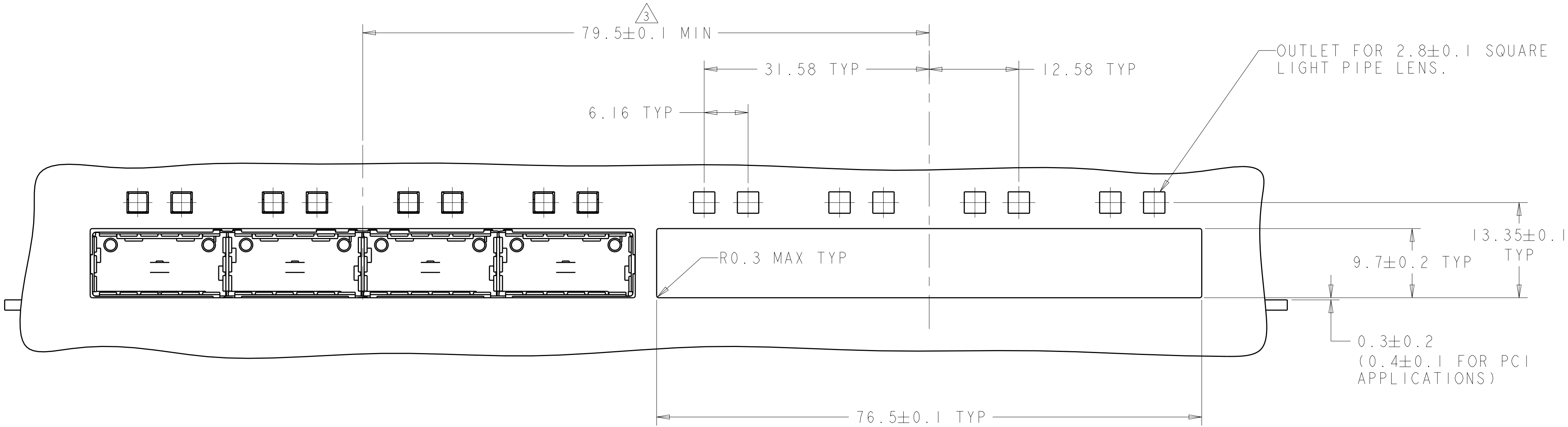
HEAT SINK CLIPS $\triangle 7/8$
QUANTITY: 4

72 PIN HEAT SINKS $\triangle 7/8$
QUANTITY: 4

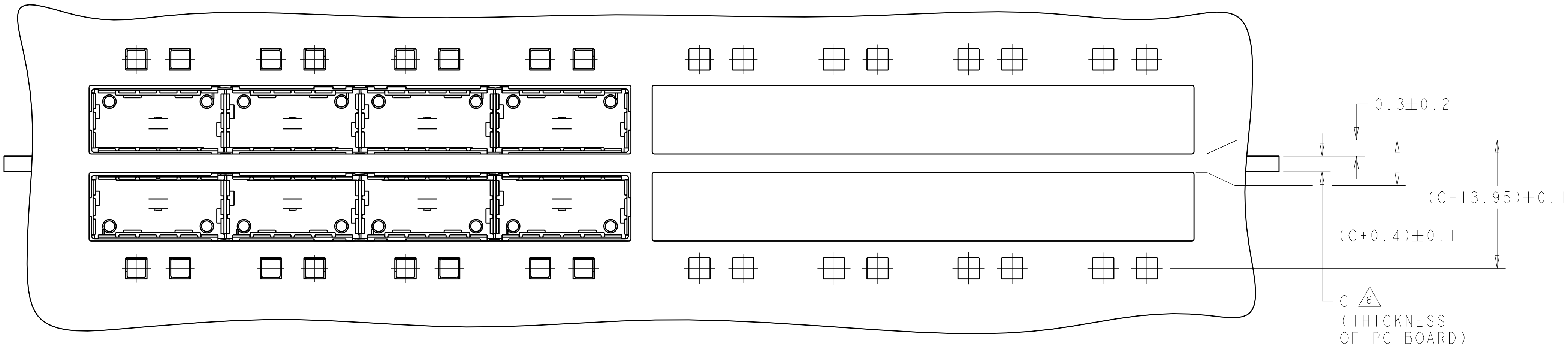
1X4 BEHIND BEZEL QSFP
CAGE ASSEMBLY
QUANTITY: 1

| | | | | | | | |
|--|--|------|-------------|-----------|---|-----------|--------------|
| THIS DRAWING IS A CONTROLLED DOCUMENT. | | OWN | C. VALENTIN | 28FEB2008 | TE Connectivity | | |
| | | CHK | E. BRIGHT | 28FEB2008 | | | |
| | | APVD | F. BRIGHT | 28FEB2008 | NAME | | |
| | | | | | 1X4 CAGE ASSEMBLY, BEHIND BEZEL, W/ SQUARE LIGHT PIPES AND HEAT SINKS, QSFP | | |
| | | | | | SIZE | CAGE CODE | DRAWING NO |
| | | | | | A1 | 00779 | C=2007626 |
| | | | | | SCALE | 1:1 | SHEET 2 OF 5 |
| | | | | | REV F | | |
| | | | | | CUSTOMER DRAWING | | |

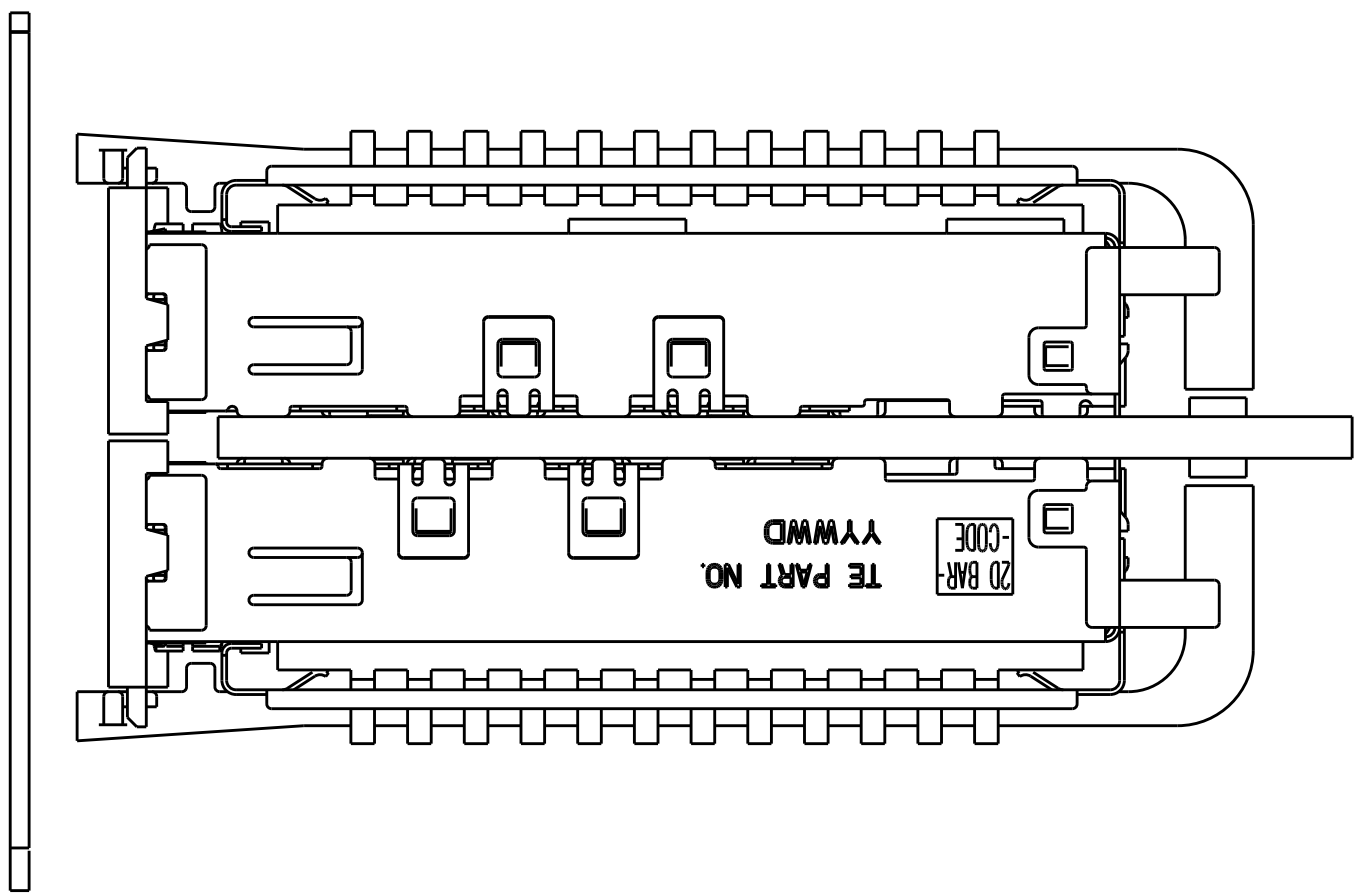
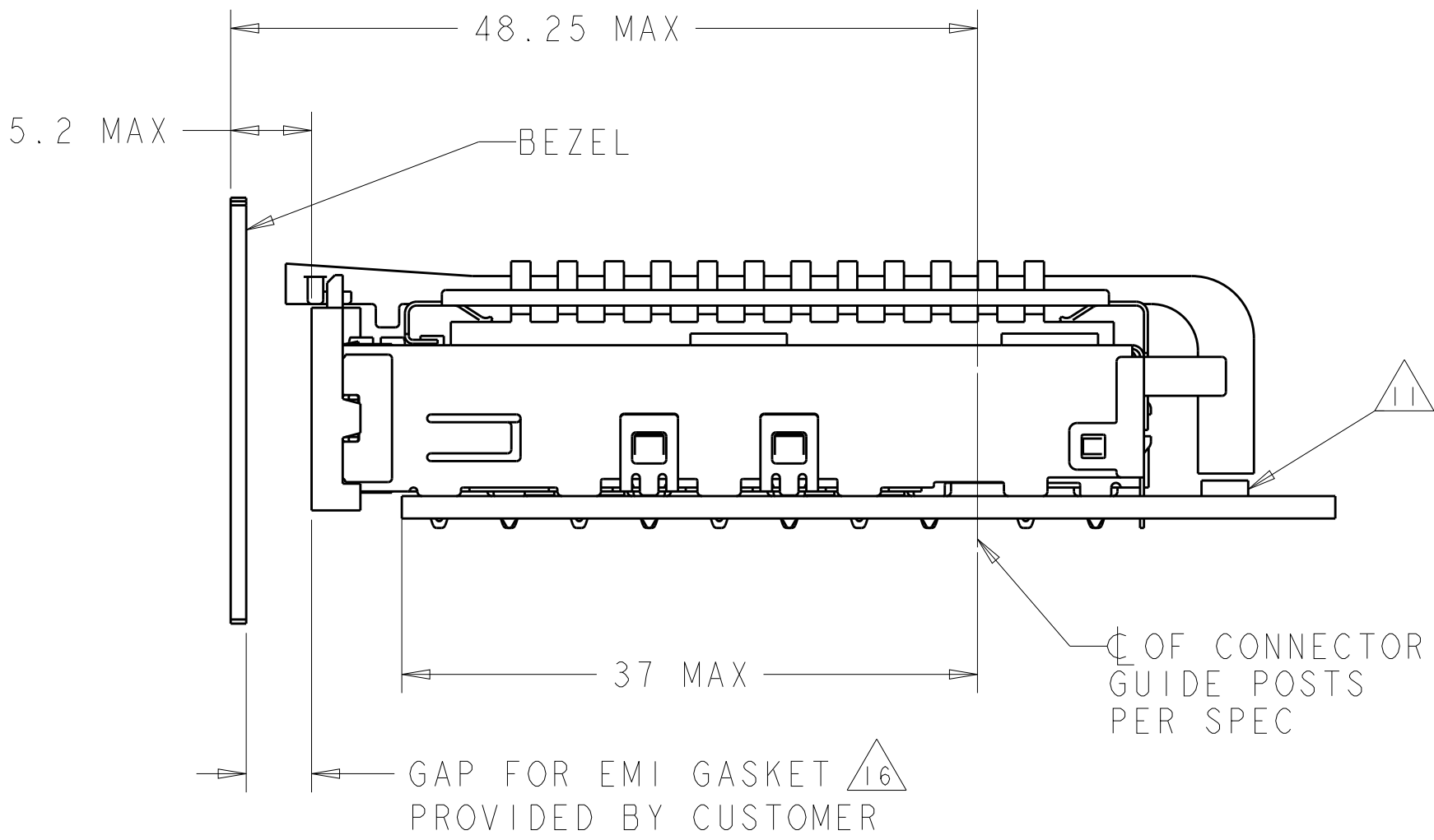
| LOC | | DIST | | REVISIONS | | | | | |
|-----|--|------|--|-----------|-----|-------------|------|-----|------|
| GP | | 00 | | P | LTR | DESCRIPTION | DATE | DWN | APVD |
| | | | | - | - | SEE SHEET 1 | - | - | - |
| | | | | | | | | | |
| | | | | | | | | | |



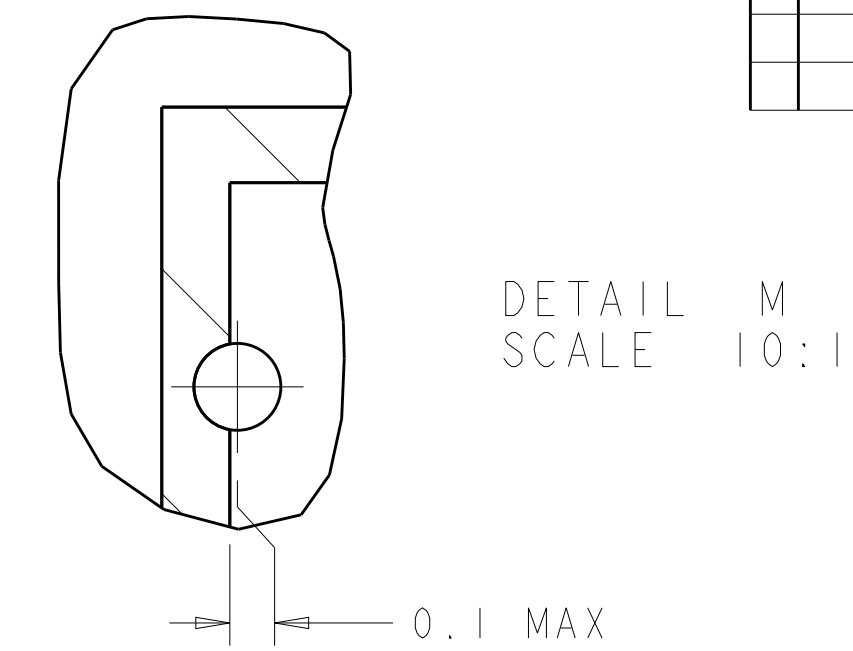
ONE SIDED CONFIGURATION
SCALE 5:2



BELLY TO BELLY CONFIGURATION
SIMILAR TO ONE SIDED
EXCEPT WHERE NOTED
SCALE 5:2

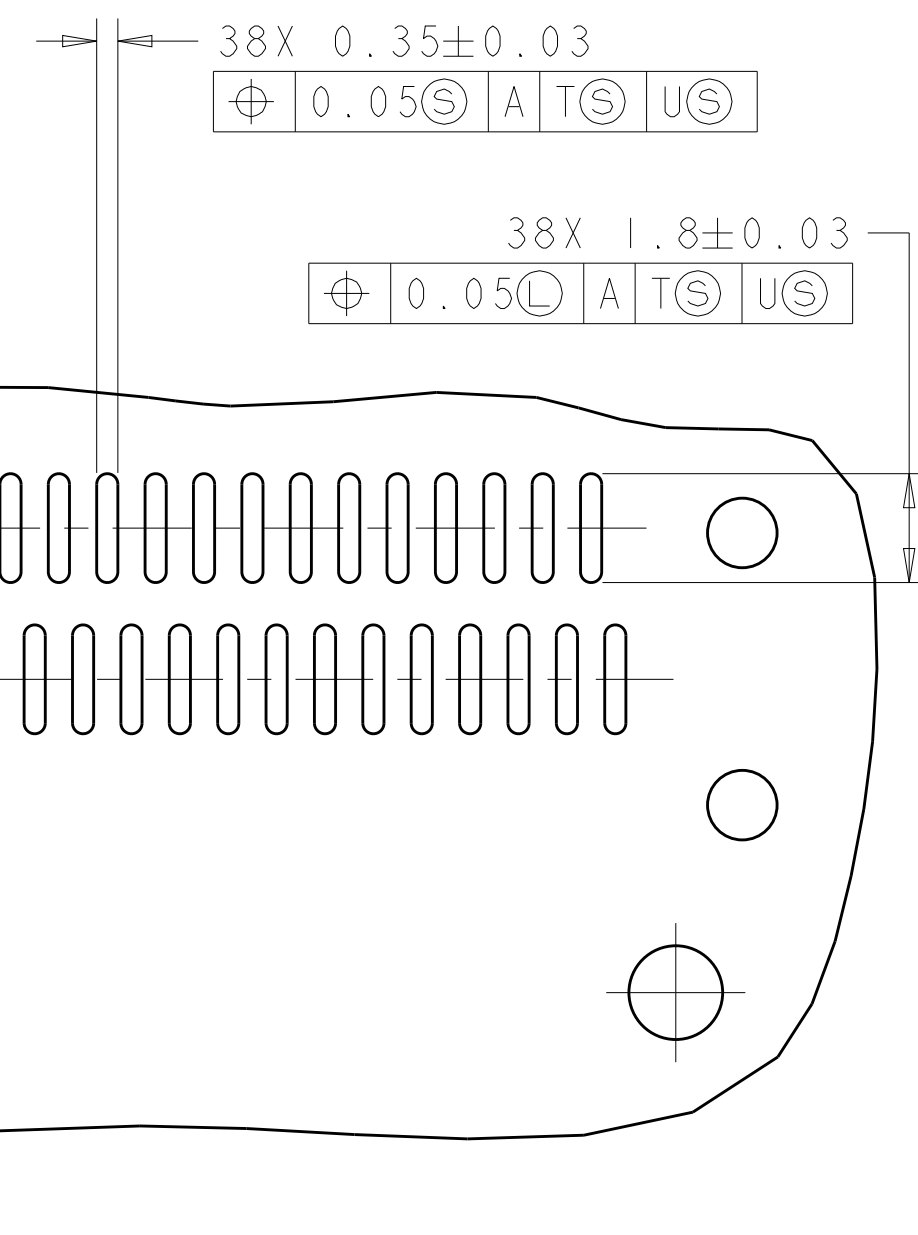


| | | | | |
|---|--|----------------------------------|---|--|
| THIS DRAWING IS A CONTROLLED DOCUMENT. | | DWN C. VALENTINE 28FEB2008 | TE Connectivity | |
| DIMENSIONS: | | CHK E. BRIGHT 28FEB2008 | NAME 1X4 CAGE ASSEMBLY, BEHIND BEZEL, W/ SQUARE LIGHT PIPES AND HEAT SINKS, QSFP | |
| mm | | APVD F. BRIGHT 28FEB2008 | SIZE A1 | |
| TOLERANCES UNLESS OTHERWISE SPECIFIED: | | PRODUCT SPEC | CAGE CODE 108-2286 | |
| 0 PLC ±0.1 | | APPLICATION SPEC | DRAWING NO 2007626 | |
| 1 PLC ±0.1 | | WEIGHT | SCALE 4:1 | |
| 2 PLC ±0.1 | | CUSTOMER DRAWING | SHEET 3 OF 5 | |
| 3 PLC ±0.1 | | | REV F | |
| 4 PLC ±0.1 | | | | |
| ANGLES ±0.1 | | | | |
| FINISH | | | | |



—CROSS-HATCHED AREA DENOTES
COMPONENT AND TRACE KEEP-OUT
(EXCEPT CHASSIS GROUND)

4805 (3/11)



RECOMMENDED PC BOARD LAYOUT
BELLY TO BELLY CONFIGURATION
SEE SHEET 4 FOR COMPONENT AND TRACE KEEPOUTS.
SCALE 4:1

4805 (3/11)

Mouser Electronics

Authorized Distributor

Click to View Pricing, Inventory, Delivery & Lifecycle Information:

[TE Connectivity:](#)

[2007626-1](#)