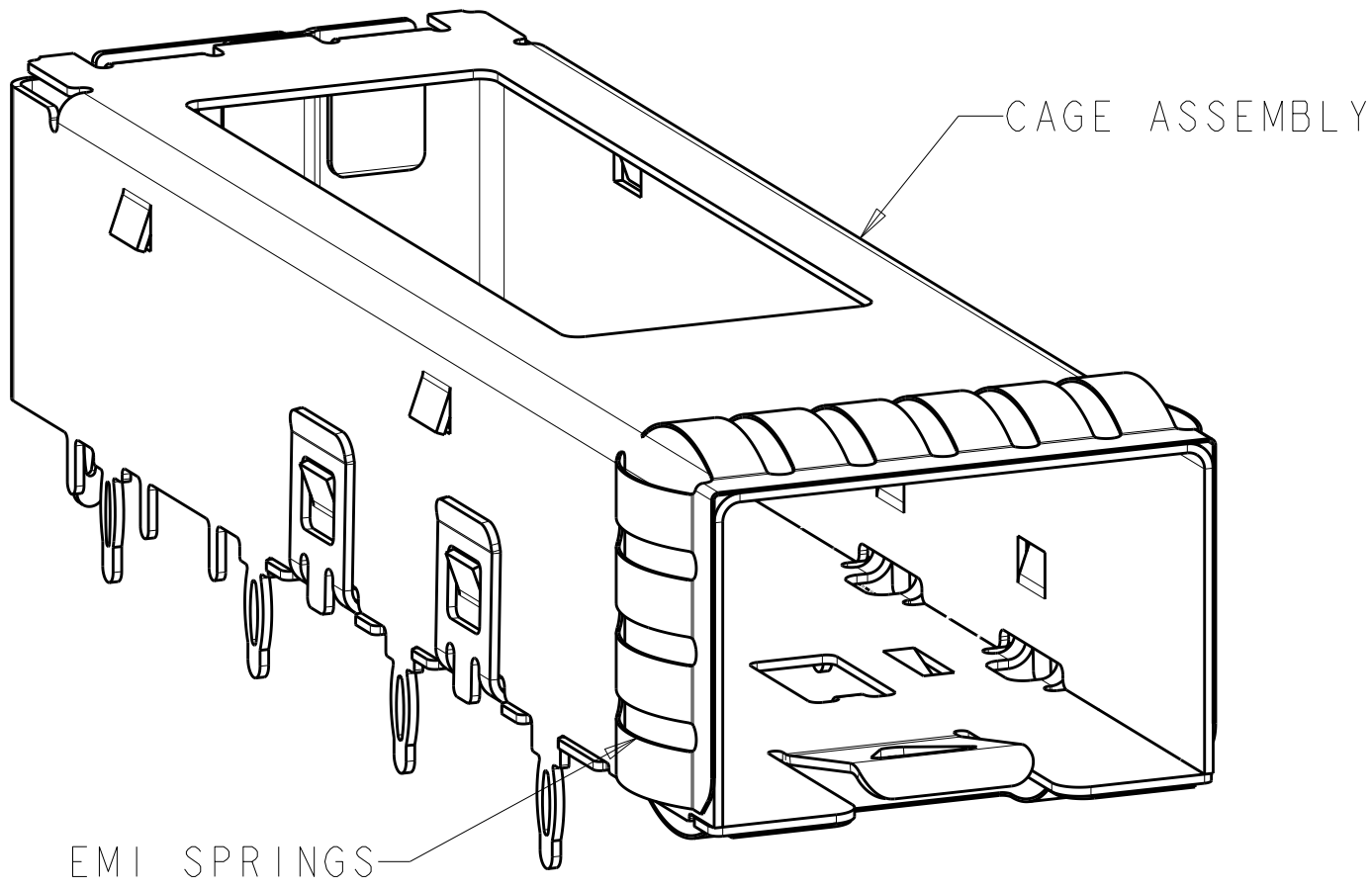
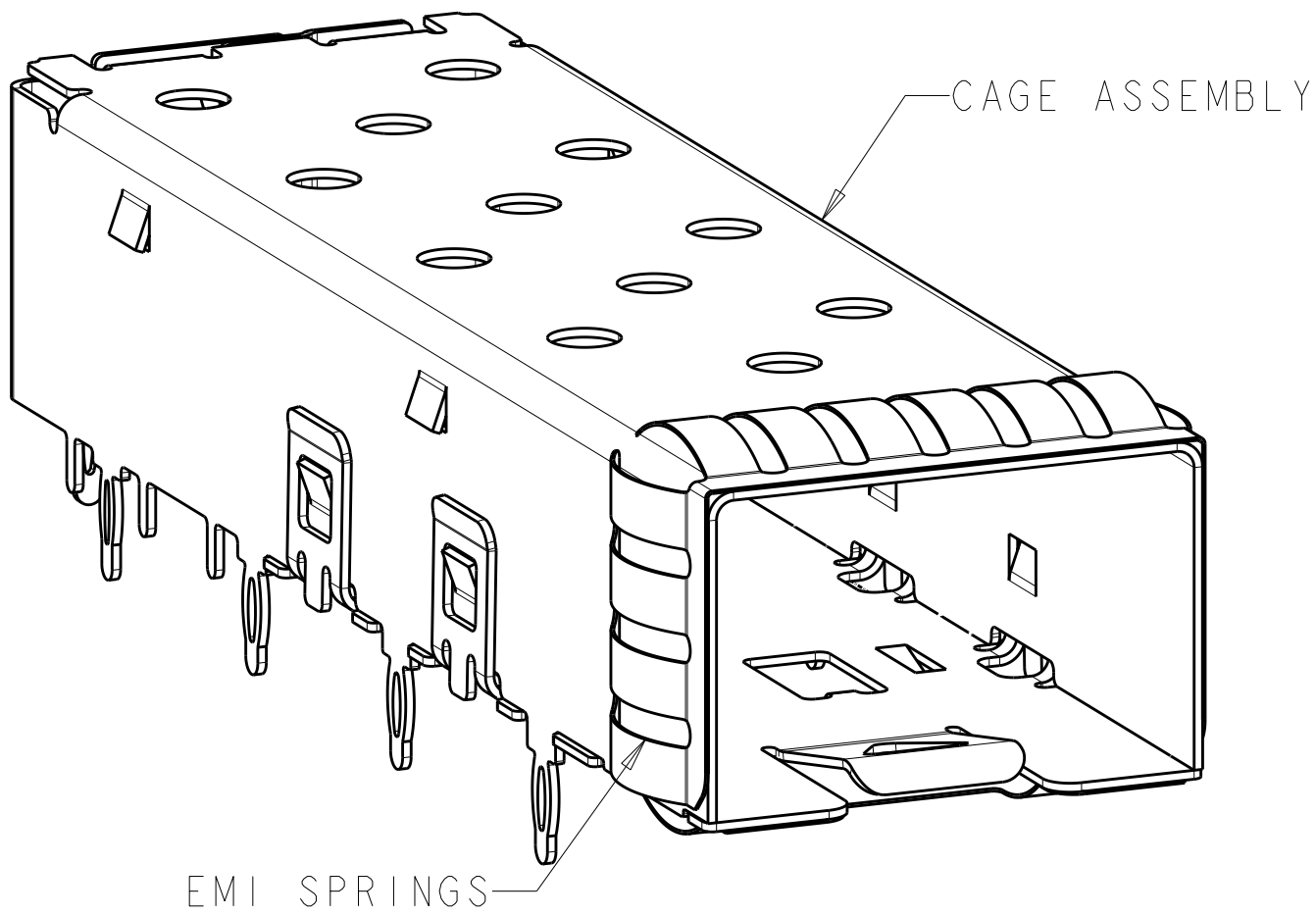


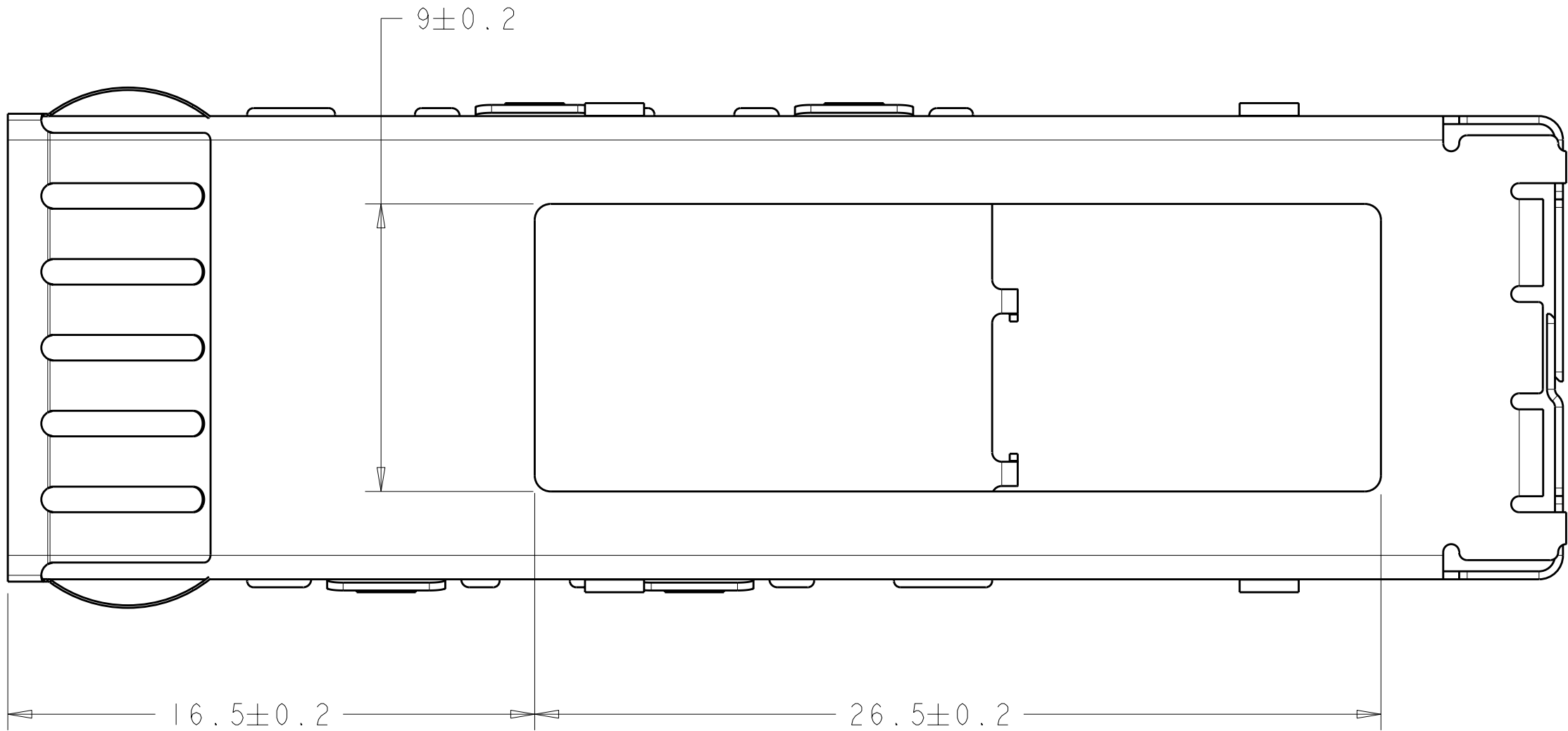
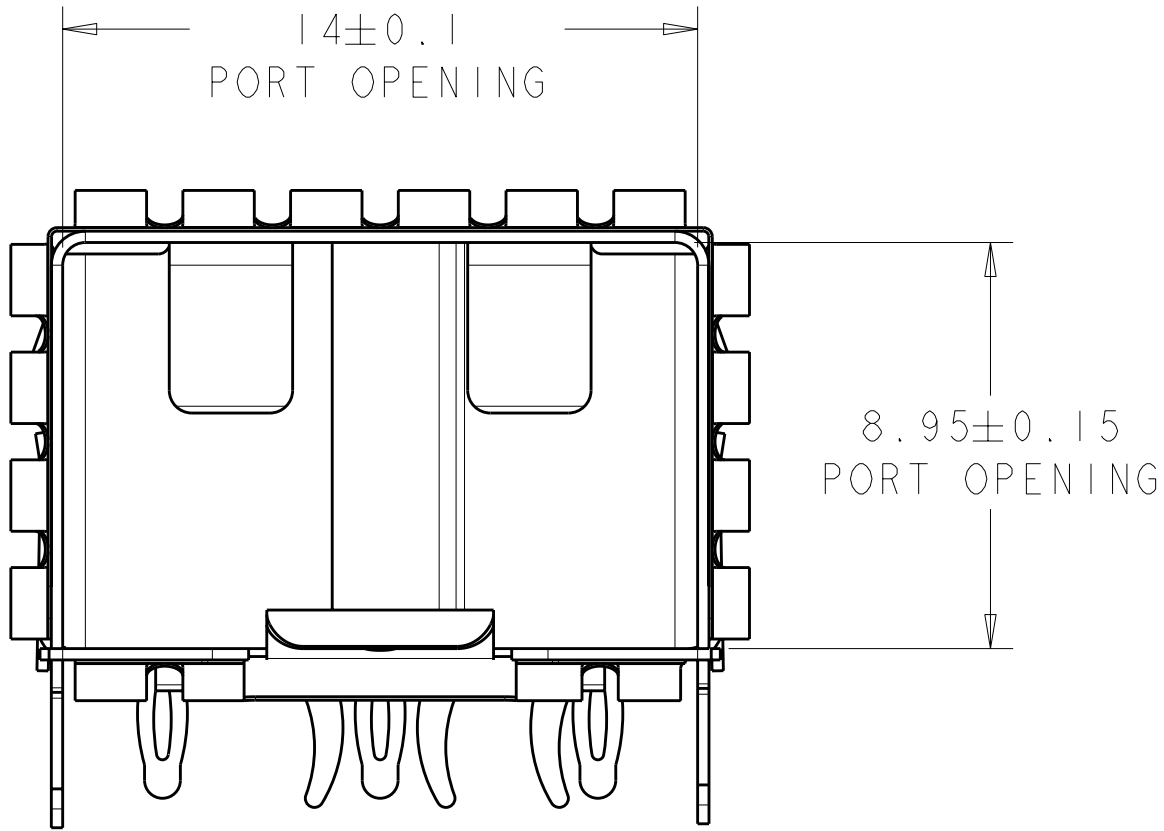
LOC		DIST		REVISIONS				
GP	00	P	LYR	DESCRIPTION	DATE	OWN	APVD	
				B	REVISED PER ECO-09-022874	200CT2009	CR	MS
				C	REVISED PER ECO-11-024172	07DEC2011	TX	AC



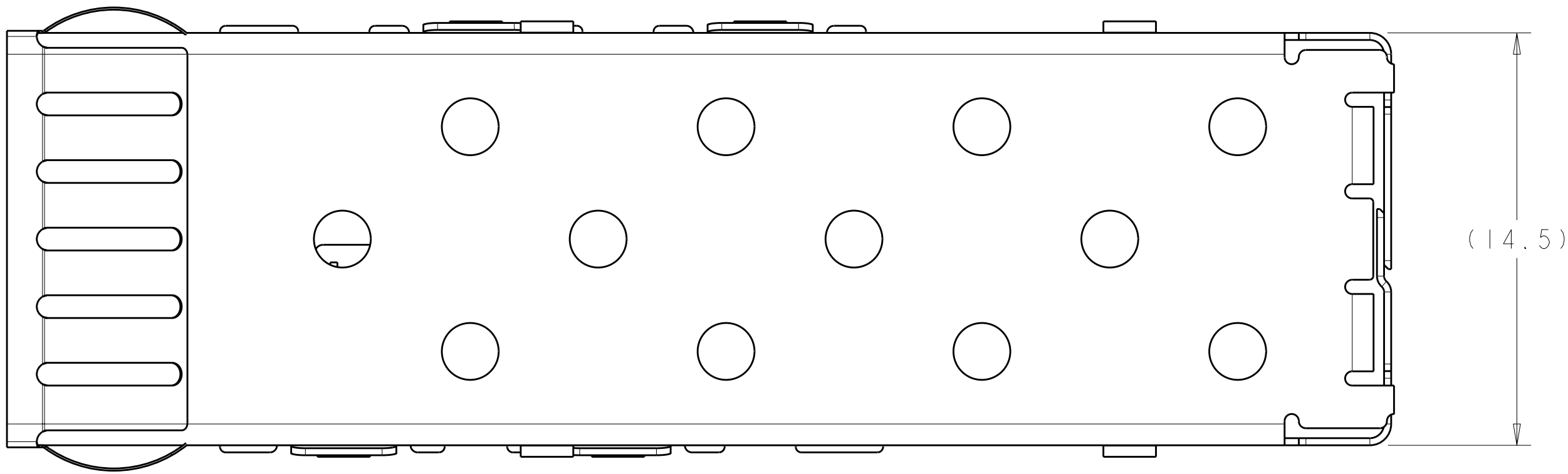
2007215-2
SCALE 5:1



2007215-1
SCALE 5:1

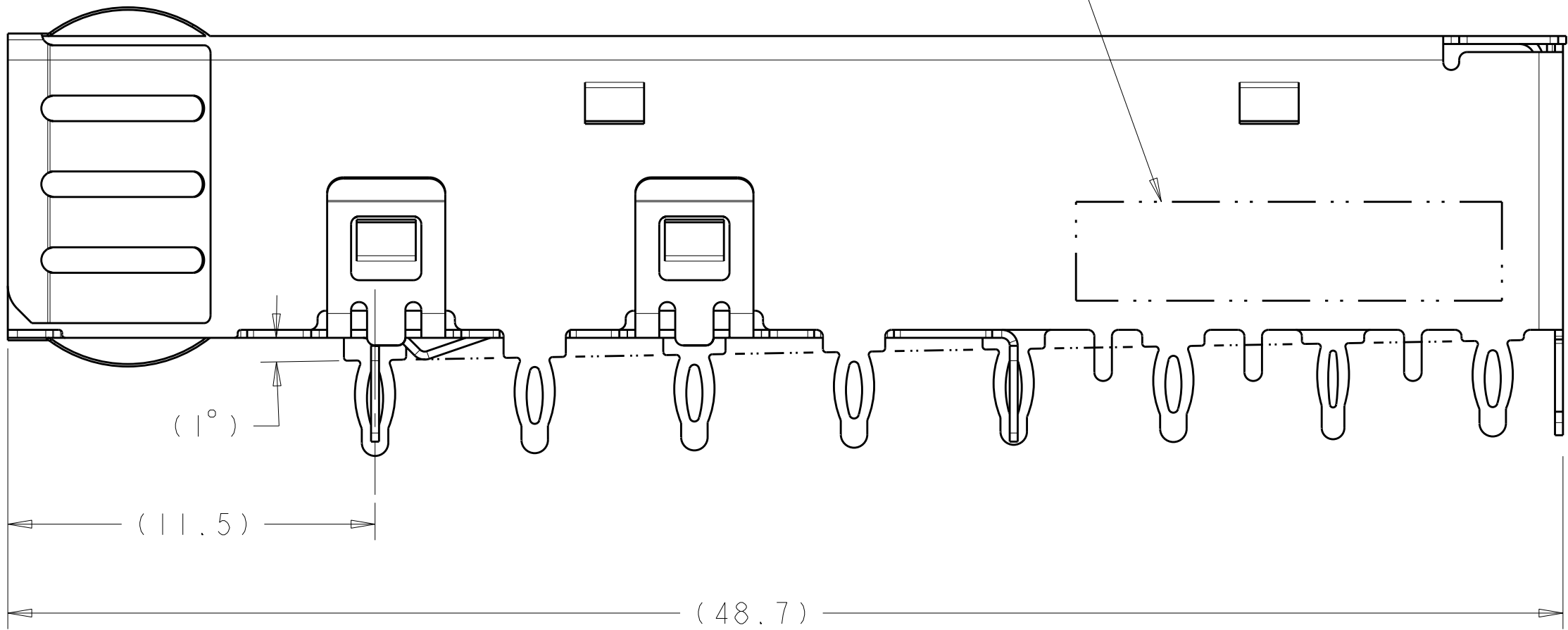


2007215-2
SAME AS 2007215-1 EXCEPT AS SHOWN
TOP VIEW

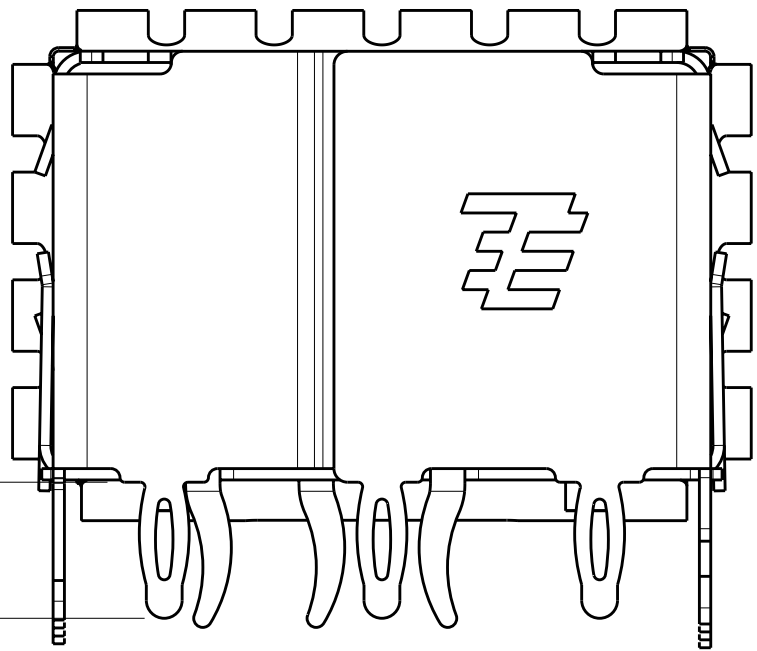


2007215-1
TOP VIEW

APPROXIMATE LOCATION
OF DATE CODE LABEL

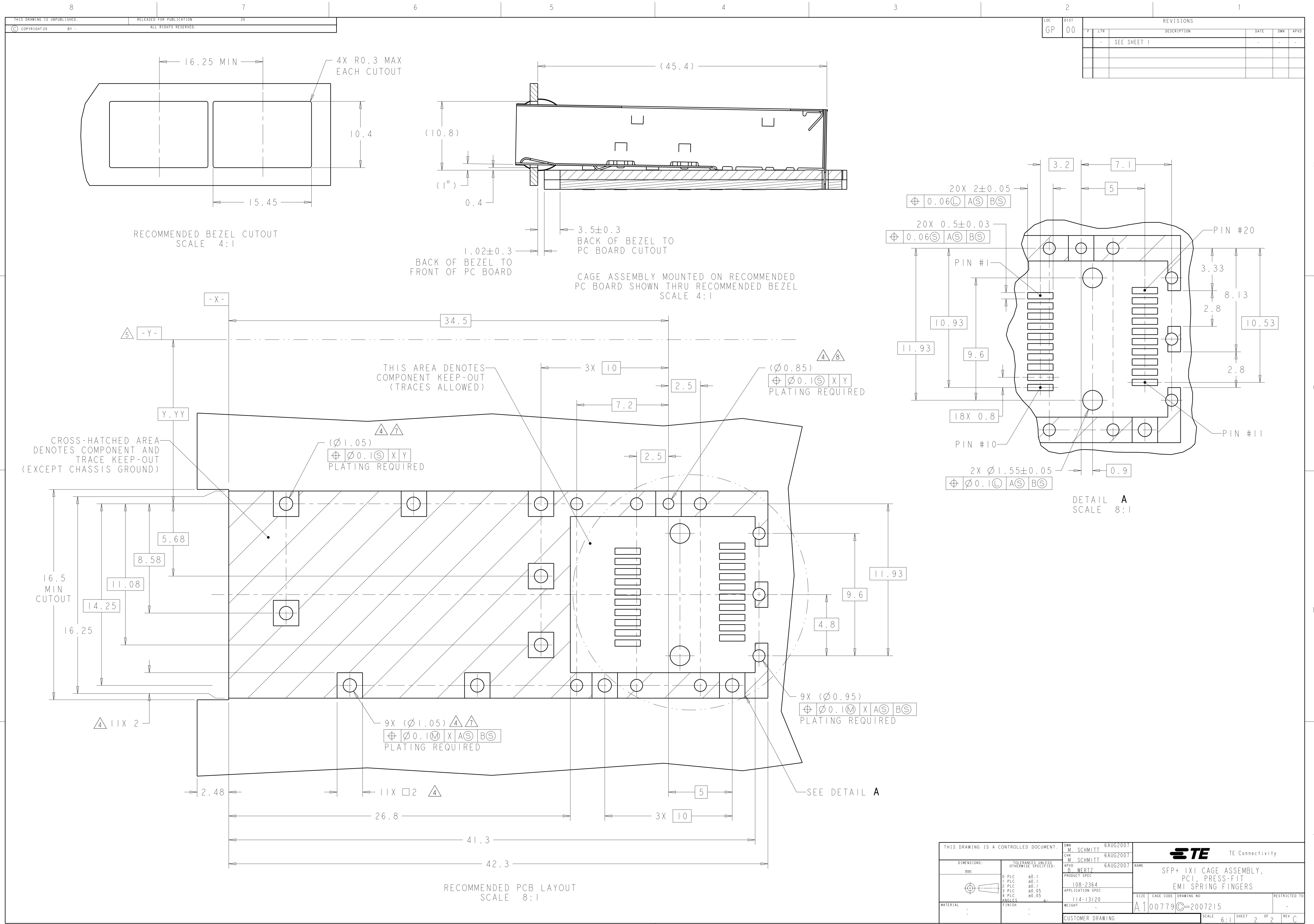


- 1 MATERIAL:
CAGE ASSEMBLY - 0.25mm THICK NICKEL-SILVER ALLOY.
EMI SPRINGS - COPPER ALLOY.
- 2 FINISH:
EMI SPRINGS - 0.8um MIN TIN OVER 0.8um MIN NICKEL,
NON PLATED EDGES PERMISSIBLE.
3. MATES WITH SFP MSA COMPLIANT TRANSCEIVERS.
- 4 PADS AND VIAS CHASSIS GROUND.
- 5 DATUMS AND BASIC DIMENSIONS ESTABLISHED BY CUSTOMER.
6. MINIMUM PC BOARD THICKNESS:
SINGLE SIDED = 1.50mm
- 7 REFERENCE APPLICATION SPEC. 114-13120, HOLE A,
FOR RECOMMENDED DRILL HOLE DIAMETER AND PLATING
THICKNESS.
- 8 REFERENCE APPLICATION SPEC. 114-13120, HOLE C,
FOR RECOMMENDED DRILL HOLE DIAMETER AND PLATING
THICKNESS.
9. NOTE DELETED



HEATSINK OPENING	2007215-2
EMI HOLES	2007215-1
DESCRIPTION	PART NUMBER

THIS DRAWING IS A CONTROLLED DOCUMENT.		OWN M. SCHMITT 6AUG2007	STC TE Connectivity	
DIMENSIONS:		CHK M. SCHMITT 6AUG2007		
mm		APVD B. WERTZ 6AUG2007		
TOLERANCES UNLESS OTHERWISE SPECIFIED:		PRODUCT SPEC		
9 PLC ±0.1		108-2364	NAME SFP+ 1XI CAGE ASSEMBLY, PCI, PRESS-FIT EMI SPRING FINGERS	
3 PLC ±0.1		APPLICATION SPEC		
5 PLC ±0.05		114-13120	SIZE CAGE CODE DRAWING NO	
4 PLC ±0.05		WEIGHT	A100779C=2007215	
ANGLES		CUSTOMER DRAWING	RESTRICTED TO	
FINISH		SCALE 6:1	SHEET 1 OF 2	
1		REV C		



THIS DRAWING IS A CONTROLLED DOCUMENT.		OWN M. SCHMITT 6AUG2007	STE TE Connectivity	
DIMENSIONS:		CHK M. SCHMITT 6AUG2007		
mm	TOLERANCES UNLESS OTHERWISE SPECIFIED:	APVD B. WERTZ 6AUG2007	NAME	
	9 PLC ±0.1	PRODUCT SPEC	SFP+ IXI CAGE ASSEMBLY,	
	2 PLC ±0.1	108-2364	PCI, PRESS-FIT	
	3 PLC ±0.1	APPLICATION SPEC	EMI SPRING FINGERS	
	4 PLC ±0.05	114-13120	SIZE CAGE CODE DRAWING NO	
MATERIAL	FINISH	WEIGHT	A100779C=2007215	
CUSTOMER DRAWING		SCALE 6:1	SHEET 2 OF 2	REV C

Mouser Electronics

Authorized Distributor

Click to View Pricing, Inventory, Delivery & Lifecycle Information:

[TE Connectivity:](#)

[2007215-1](#)