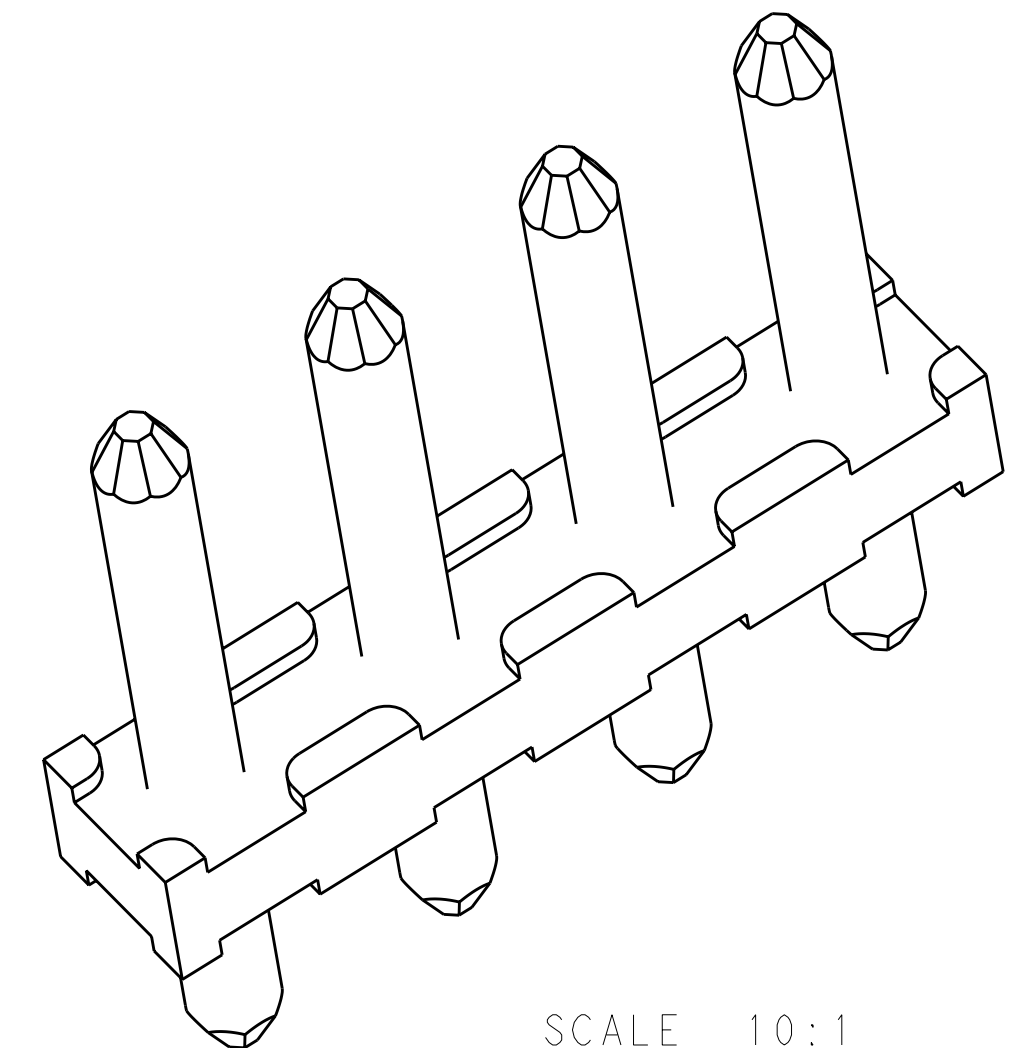
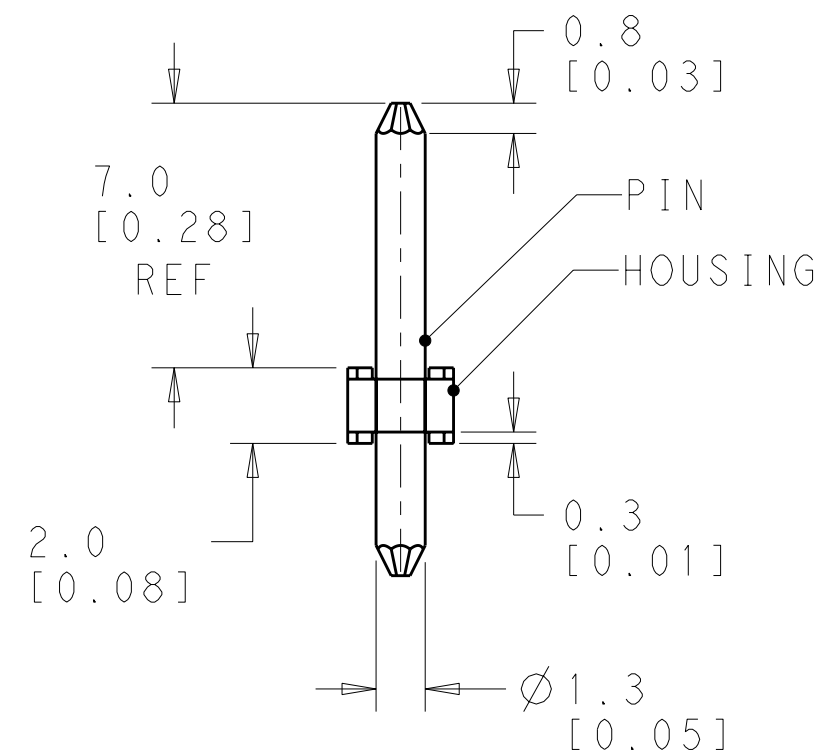
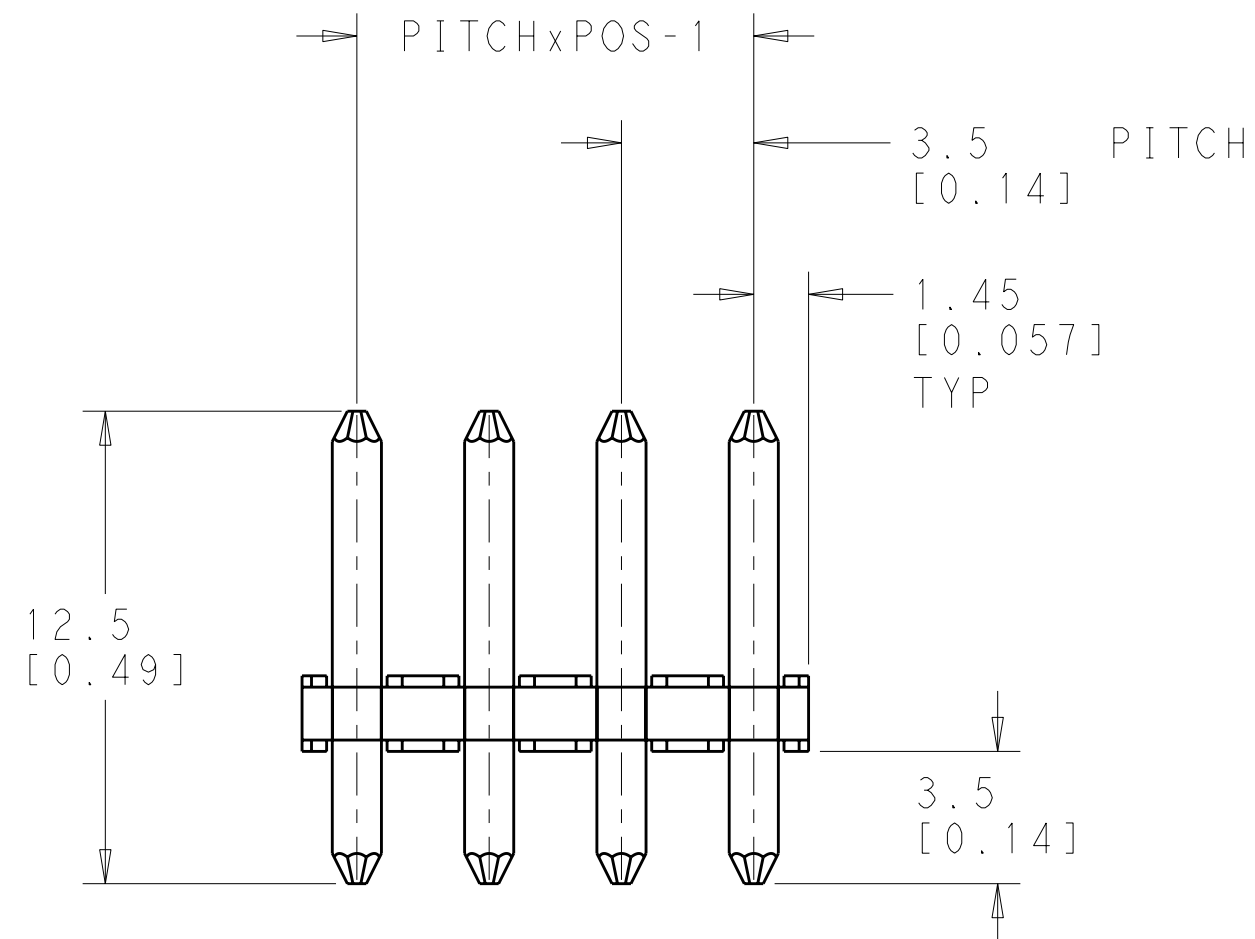
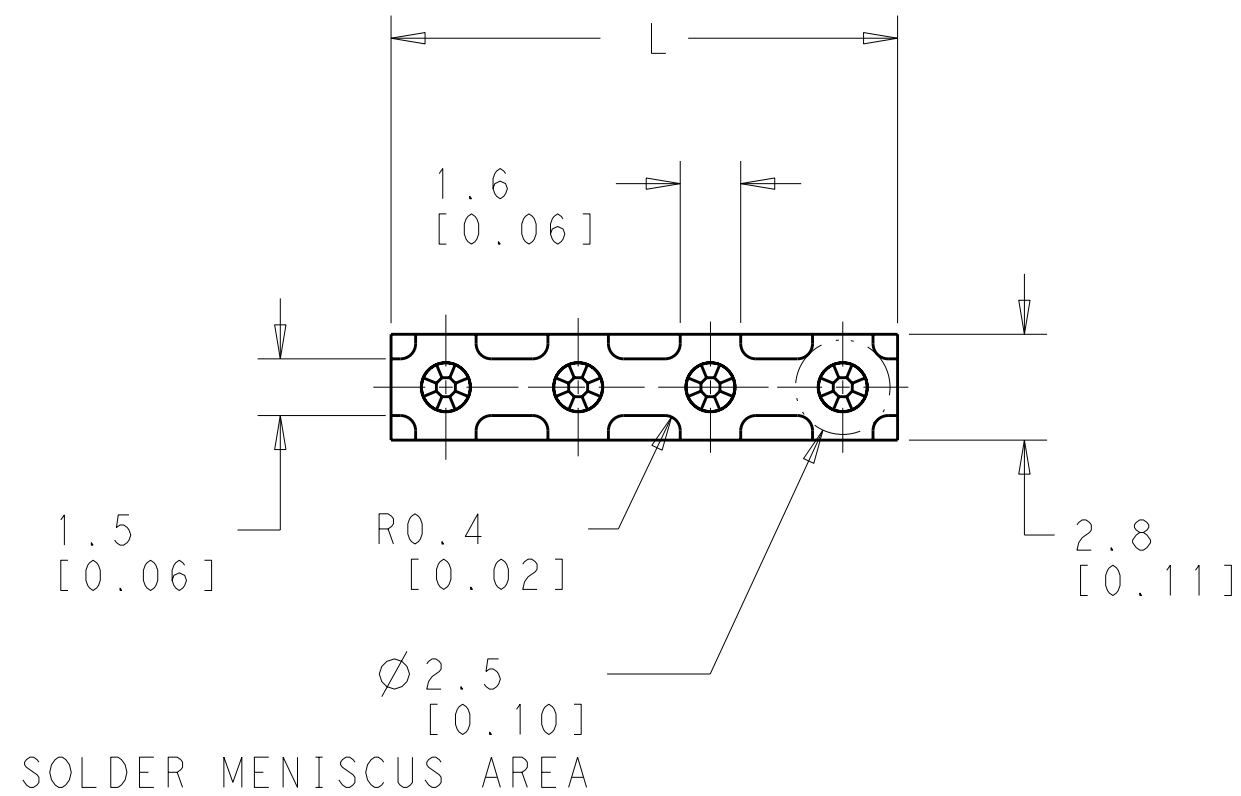


LOC	DIST	REVISIONS					
FT	0	P	LTR	DESCRIPTION	DATE	DWN	APVD
			B2	REVISED PER ECO-12-007712	24APR2012	KH	MS



SCALE 10:1

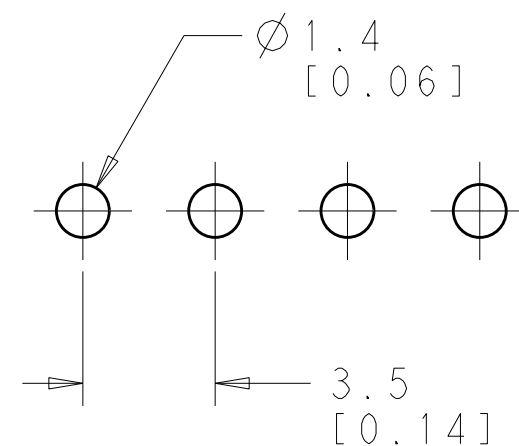


NOTE

MATERIALS:
HOUSING-POLYAMIDE, COLOR-GREEN
PIN- COPPER ALLOY - TIN PLATE



MECHANICAL :
RECOMMENDED PCB HOLE-1.4 to 1.5mm
PIN DIAMETER-1.30
PIN LENGTH (MATING)-7.00 MM
PIN LENGTH (PCB)-3.50 MM
OPERATING TEMPERATURE--40°C TO +110°C

ELECTRICAL :
VOLTAGE RATING- 150 VOLTS
CURRENT RATING-2 AMP
CONTACT RESISTANCE-15 MILLOHM MAX
INSULATION RESISTANCE- 10^9 OHMS MIN (500V DC)



- 4 AS SHOWN

27.40[1.079]	8	1986717-8
23.90[.941]	7	1986717-7
20.40[.803]	6	1986717-6
16.90[.665]	5	1986717-5
13.40[.528]	4	1986717-4
9.90[.390]	3	1986717-3
6.40[.252]	2	1986717-2
DIM L	POS	PART NO

THIS DRAWING IS A CONTROLLED DOCUMENT.		DWN YASHKUMAR 09NOV2011		 TE Connectivity	
		CHR 09NOV2011 SARVER MICHAEL			
DIMENSIONS: MM [INCH]		TOLERANCES UNLESS OTHERWISE SPECIFIED: 0 PLC ± 1 PLC ±0.20 2 PLC ±0.20 3 PLC ± 4 PLC ± ANGLES ±1°		NAME MALE CONNECTOR, UNSHROUDED HEADER WITH STANDARD BASE-SOLDERABLE UP TO 275DEG C STRAIGHT, SIDE STACKABLE, PIN 1.3 mm 02 - 8 POLES PITCH 3.50mm	
		PRODUCT SPEC - APPLICATION SPEC - WEIGHT -		SIZE A2	CAGE CODE 00779
MATERIAL -		FINISH -		DRAWING NO C-1986717	RESTRICTED TO -
CUSTOMER DRAWING				SCALE	5:1
				SHEET	1 OF 1
				REV	B2

Mouser Electronics

Authorized Distributor

Click to View Pricing, Inventory, Delivery & Lifecycle Information:

[TE Connectivity:](#)

[1986717-7](#)