

4

3

2

1

THIS DRAWING IS UNPUBLISHED.

RELEASED FOR PUBLICATION

2011

© COPYRIGHT 2011

ALL RIGHTS RESERVED.

LOC

DIST

REVISIONS

AI

-

P

LTR

DESCRIPTION

DATE

DWN

APVD

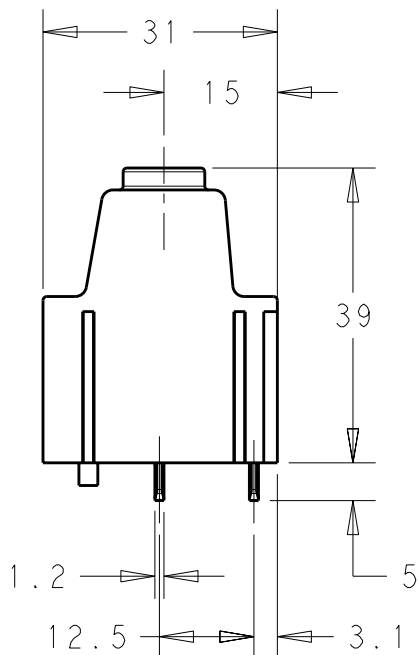
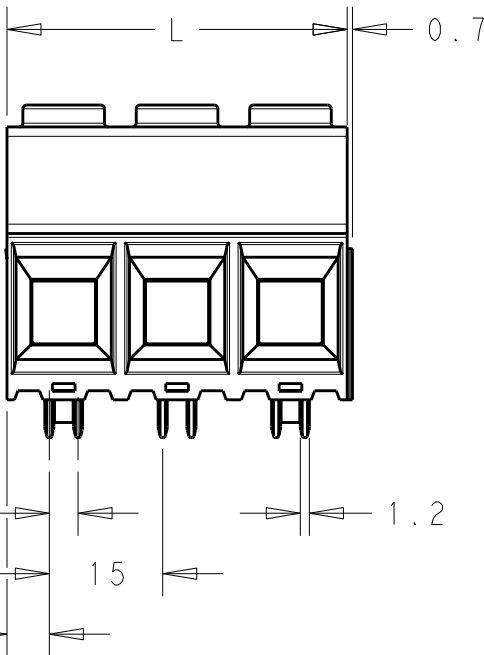
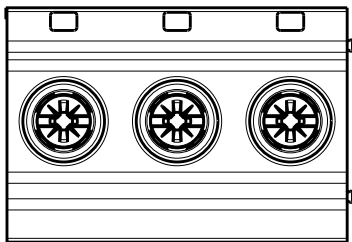
B

REVISED PER ECO-12-005569

22MAR2012

HRY

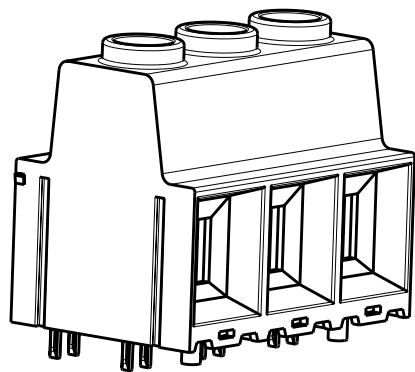
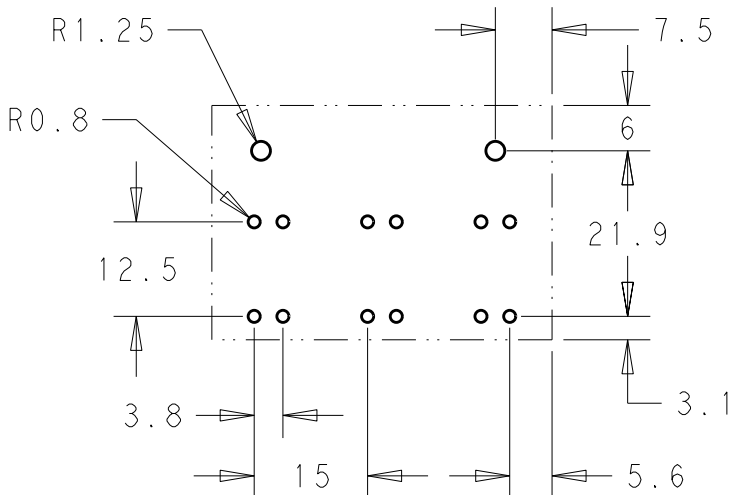
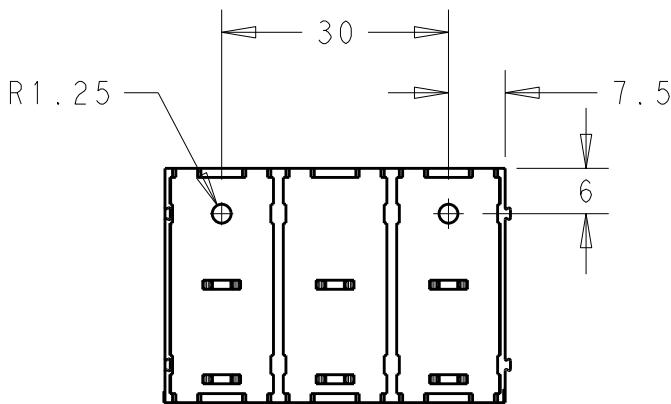
MS



MATERIALS:  
HOUSING-POLYAMIDE, COLOR-GREEN  
SCREW- M5,NICKEL PLATED STEEL.  
CLAMP- TIN PLATED STEEL.  
PIN-TIN OVER NICKEL PLATED COPPER ALLOY.

MECHANICAL:  
PCB THICKNESS-2.40 MAX  
PCB HOLE DIAMETER-1.60 MIN  
STRIP LENGTH-18 MM  
OPERATING TEMPERATURE--40°C TO +110°C  
TORQUE-2.1~2.5 Nm.

ELECTRICAL:  
WIRE RANGE- 20 TO 1 AWG  
VOLTAGE RATING- 600 VOLTS  
CURRENT RATING-130 AMP FIELD WIRING; 135 AMP FACTORY WIRING  
CONTACT RESISTANCE-15 MILLOHM MAX  
INSULATION RESISTANCE-10<sup>9</sup> OHMS MIN (500V DC)



SCALE 1:1  
-3 AS SHOWN

180.00	12	1-1986714-2
165.00	11	1-1986714-1
150.00	10	1-1986714-0
135.00	9	1986714-9
120.00	8	1986714-8
105.00	7	1986714-7
90.00	6	1986714-6
75.00	5	1986714-5
60.00	4	1986714-4
45.00	3	1986714-3
30.00	2	1986714-2
DIM L	POLE	PART NUMBER

THIS DRAWING IS A CONTROLLED DOCUMENT.

DWN 05SEP2011

CHK 05SEP2011

APVD 05SEP2011

PRODUCT SPEC

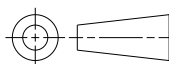
APPLICATION SPEC

WEIGHT

CUSTOMER DRAWING

DIMENSIONS:

mm



TOLERANCES UNLESS OTHERWISE SPECIFIED:

0 PLC ±  
1 PLC ±0.40  
2 PLC ±0.20  
3 PLC ±  
4 PLC ±  
ANGLES ±1°

MATERIAL

FINISH



TE Connectivity

NAME  
POWER TERMINAL BLOCK, SOLDERABLE  
UP TO 275DEG C DOUBLE PIN MODULAR 02 - 12 POLES  
PITCH 15.00mm WITH PEG

SIZE CAGE CODE DRAWING NO RESTRICTED TO

A300779C-1986714

SCALE 1:1 SHEET 1 OF 1 REV B

# Mouser Electronics

Authorized Distributor

Click to View Pricing, Inventory, Delivery & Lifecycle Information:

[TE Connectivity:](#)

[1986714-2](#)