

4

3

2

1

THIS DRAWING IS UNPUBLISHED.

RELEASED FOR PUBLICATION

2011

© COPYRIGHT 2011

ALL RIGHTS RESERVED.

LOC

DIST

REVISIONS

AI

-

P

LTR

DESCRIPTION

DATE

DWN

APVD

B

REVISED PER ECO-12-005569

22MAR2012

HRY

MS

MATERIALS:

HOUSING-POLYAMIDE, COLOR-GREEN

SCREW- M5,NICKEL PLATED STEEL.

CLAMP- TIN PLATED STEEL.

PIN-TIN OVER NICKEL PLATED COPPER ALLOY.

MECHANICAL:

PCB THICKNESS-2.40 MAX

PCB HOLE DIAMETER-1.60 MIN

STRIP LENGTH-18 MM

OPERATING TEMPERATURE--40°C TO +110°C

TORQUE-2.1~2.5 Nm

ELECTRICAL:

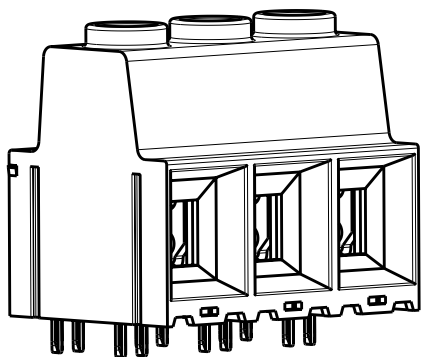
WIRE RANGE- 20 TO 1 AWG

VOLTAGE RATING- 600 VOLTS

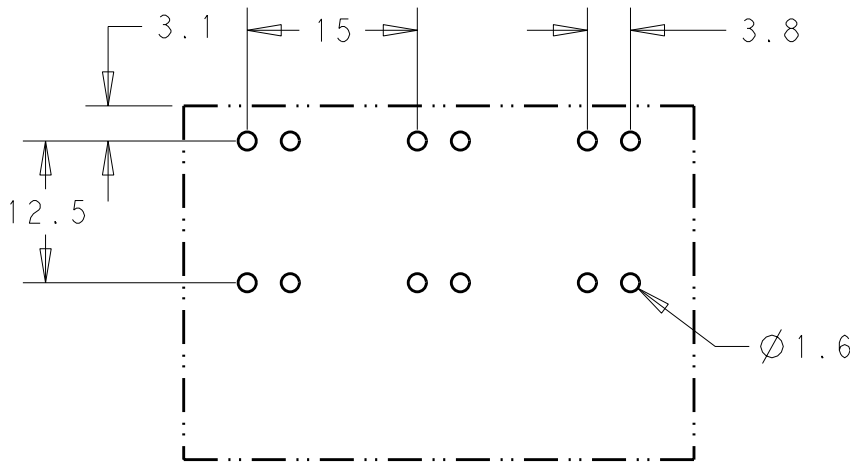
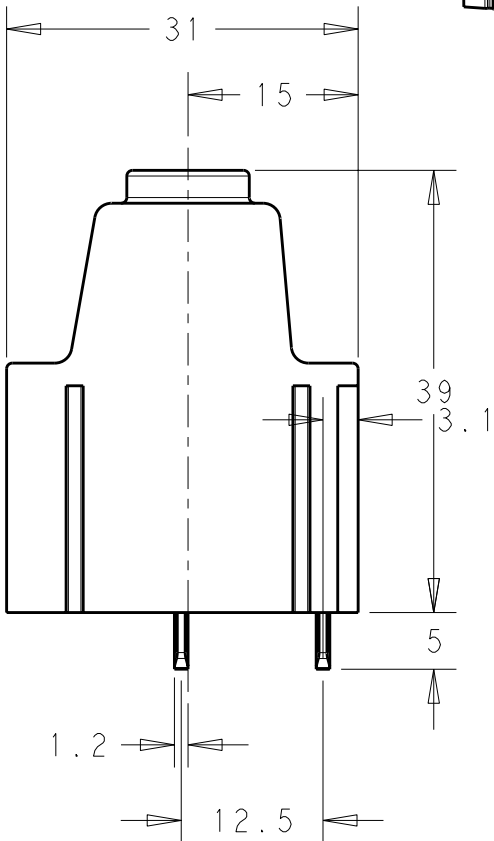
CURRENT RATING-130 AMP FIELD WIRING; 135 AMP FACTORY WIRING

CONTACT RESISTANCE-15 MILLOHM MAX

INSULATION RESISTANCE-10<sup>9</sup> OHMS MIN (500V DC)



SCALE 1:1  
-3 AS SHOWN



180.00	12	1-1986713-2
165.00	11	1-1986713-1
150.00	10	1-1986713-0
135.00	9	1986713-9
120.00	8	1986713-8
105.00	7	1986713-7
90.00	6	1986713-6
75.00	5	1986713-5
60.00	4	1986713-4
45.00	3	1986713-3
30.00	2	1986713-2
DIM L	POLE	PART NUMBER

THIS DRAWING IS A CONTROLLED DOCUMENT.

DWN 12SEP2011

RAGHAVENDRA

CHK 12SEP2011

SARVER MICHAEL

APVD 12SEP2011

SARVER MICHAEL

PRODUCT SPEC

-

APPLICATION SPEC

-

WEIGHT

-

CUSTOMER DRAWING

STE

TE Connectivity

POWER TERMINAL BLOCK, SOLDERABLE  
UP TO 275DEG C DOUBLE PIN MODULAR  
02 - 12 POLES PITCH 15.00mm

SIZE

CAGE CODE

DRAWING NO

RESTRICTED TO

A3

00779

C-1986713

-

SCALE 1:1

SHEET 1 OF 1

REV B

# Mouser Electronics

Authorized Distributor

Click to View Pricing, Inventory, Delivery & Lifecycle Information:

[TE Connectivity:](#)

[1-1986713-0](#)