

REVISIONS					
P	LTR	DESCRIPTION	DATE	DWN	APVD
E2		ECR-18-002718	23FEB2018	M.G	D.Z

NOTE:

1. GENERAL TOLERANCE: ± 0.3 , $\pm 3^\circ$

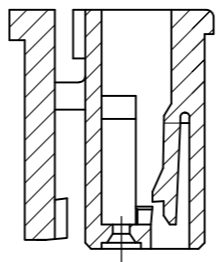
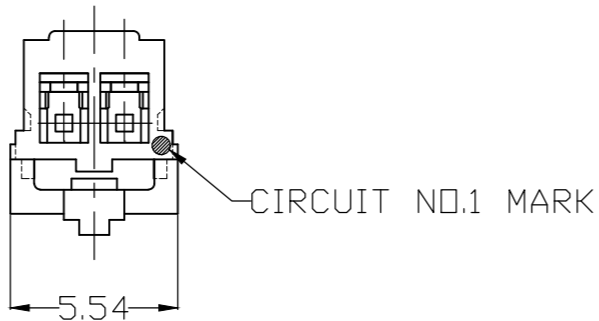
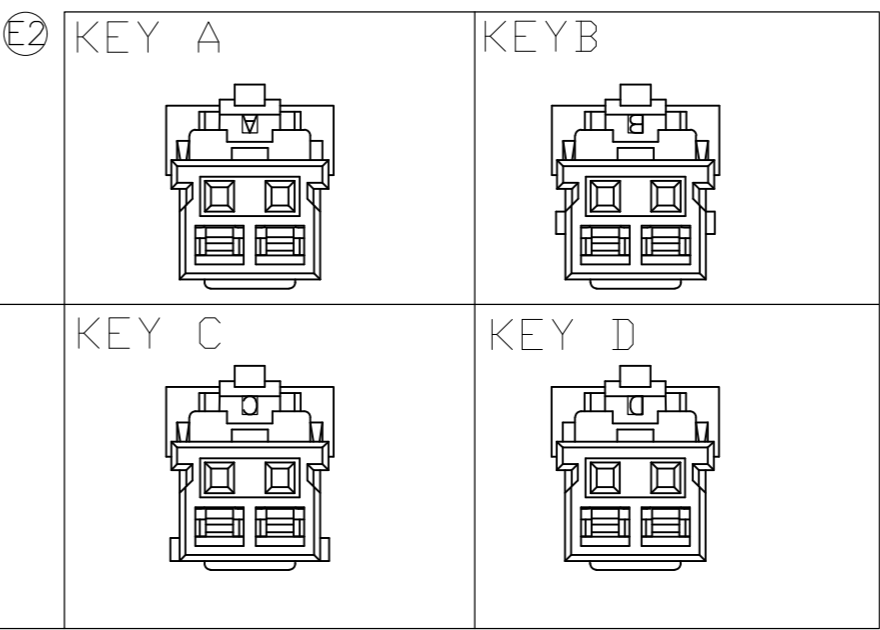
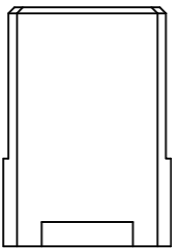
2. MATERIAL: 66NYLON GF(UL94V-0)

3. MATING CONN. P/N: SEE TABLE

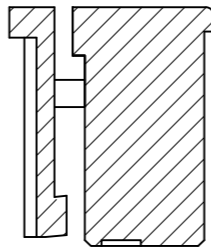
4. APPLICABLE CONTACT P/N:

1971031-1

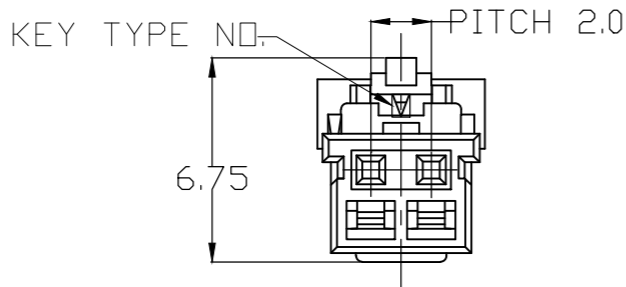
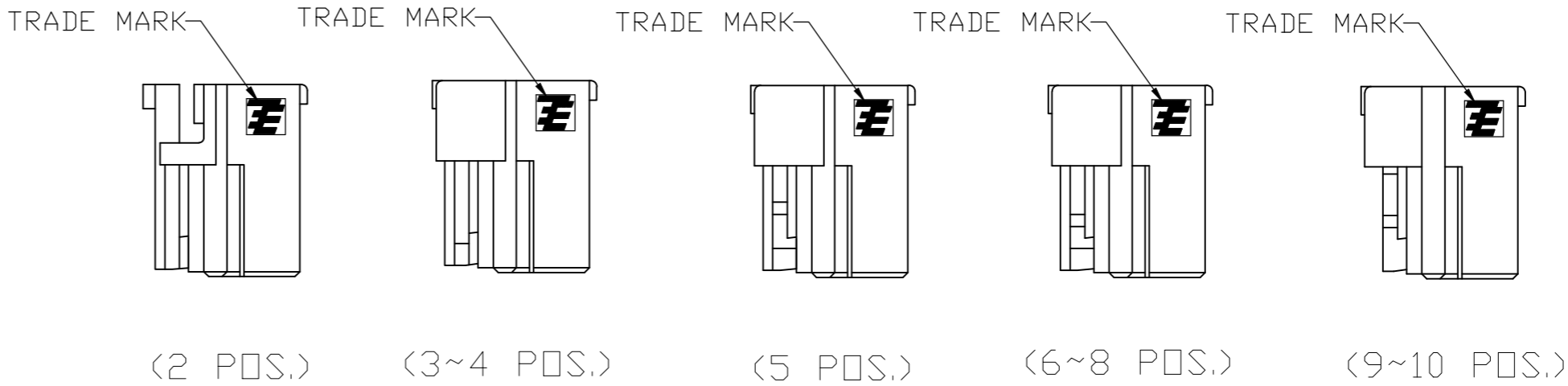
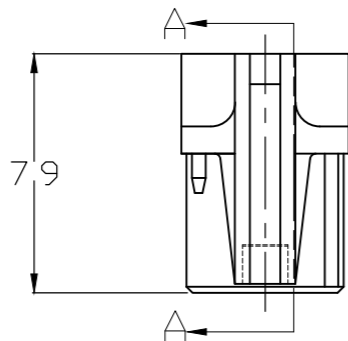
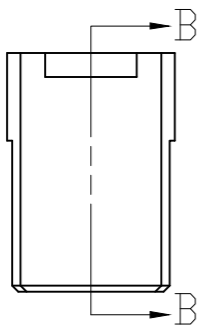
(2 POS.)



SEC. B-B



SEC. D-D



THIS DRAWING IS A CONTROLLED DOCUMENT.		DWN Liu Jimmy 11JUN2008	TE Connectivity		
DIMENSIONS: mm		CHK Wu hapye 11JUN2008			
		APVD Zhou Julian 11JUN2008	NAME		
		PRODUCT SPEC 108-106001	Grace Inertia Connector 2.0 EV Series Plug Housing		
MATERIAL SEE NOTE		FINISH -	WEIGHT 0	SIZE A2	RESTRICTED TO -
		CUSTOMER DRAWING	SCALE 4:1	CAGE CODE 00779	REVISION E2
			DRAWING NO. C=1971030	SHEET 1 OF 3	REV E2

THIS DRAWING IS UNPUBLISHED.

RELEASED FOR PUBLICATION

© COPYRIGHT - TE Connectivity

ALL RIGHTS RESERVED.

REVISIONS					
P	LTR	DESCRIPTION	DATE	DWN	APVD
	—	SEE SHEET 1	—	—	—

D

C

B

A

D

C

B

A

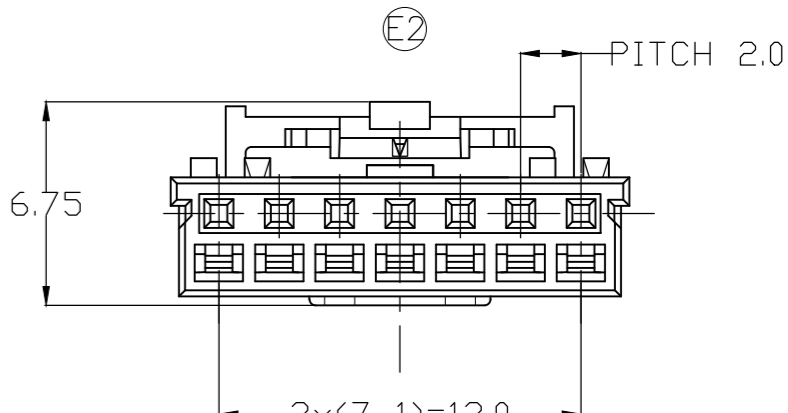
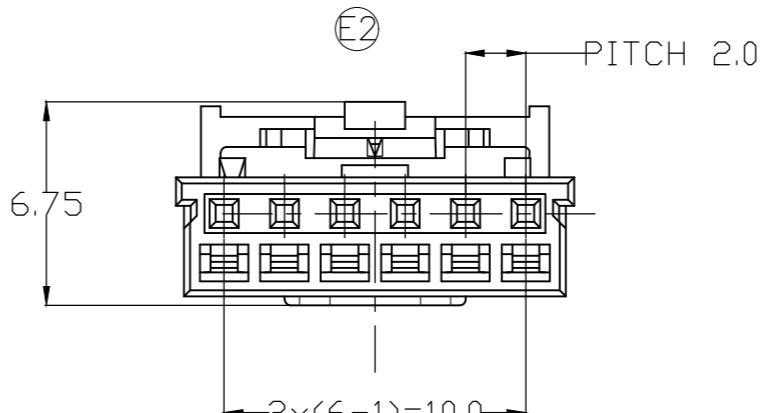
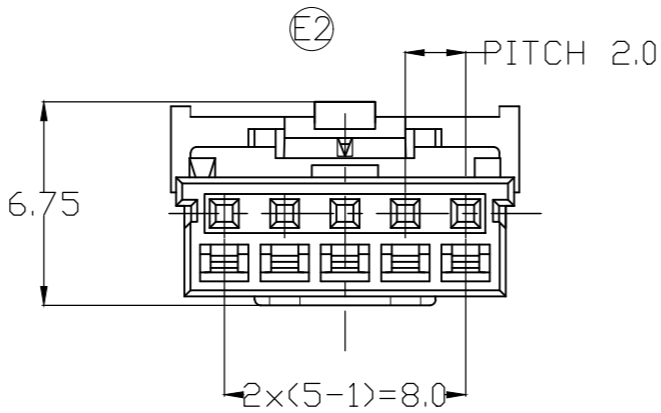
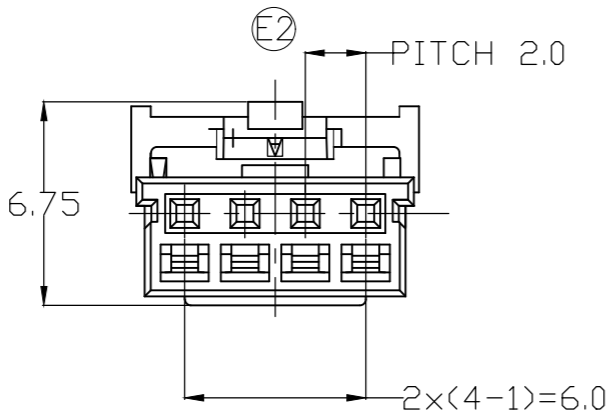
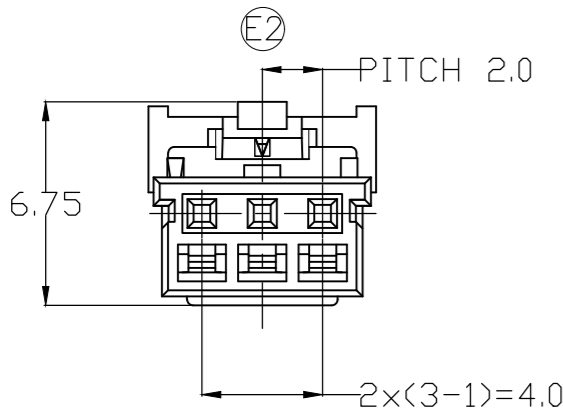
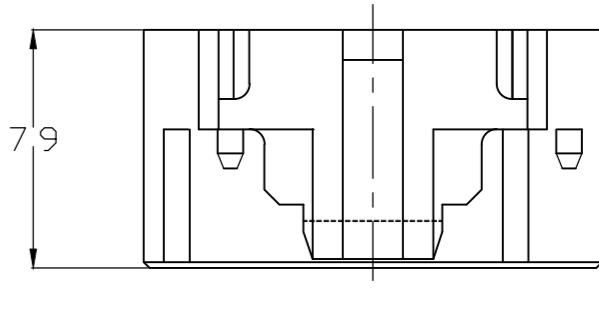
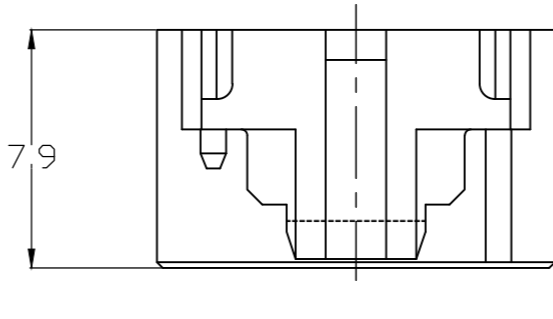
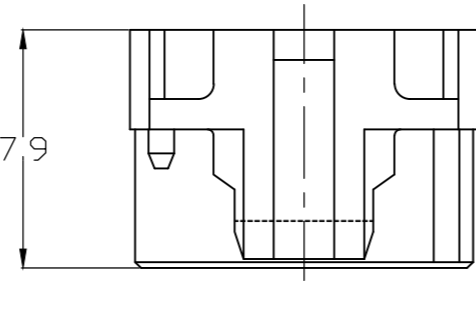
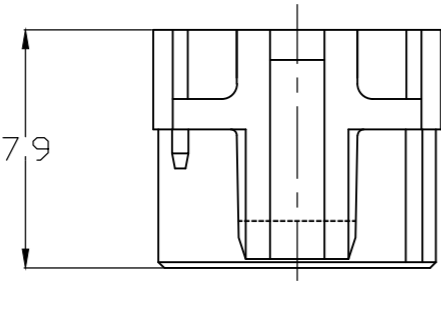
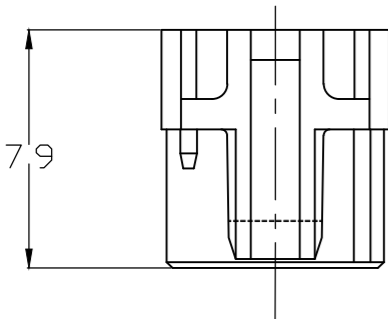
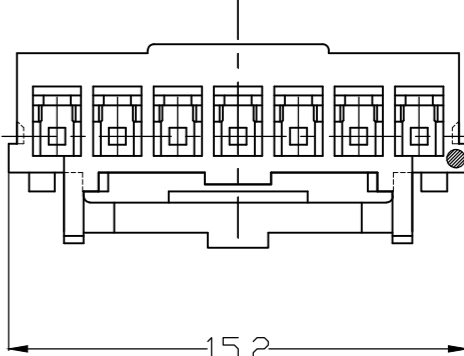
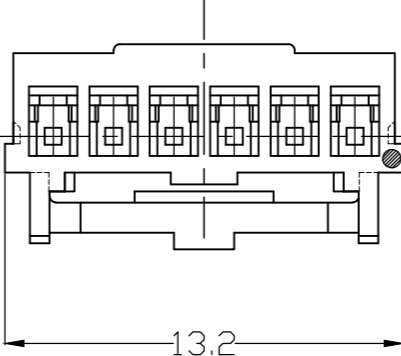
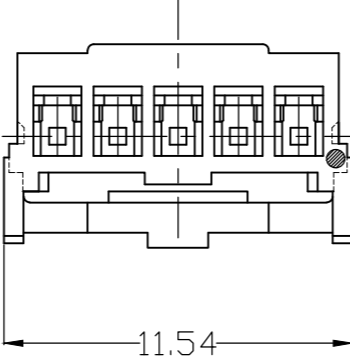
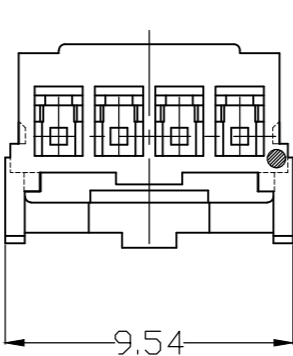
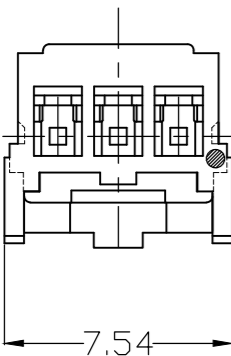
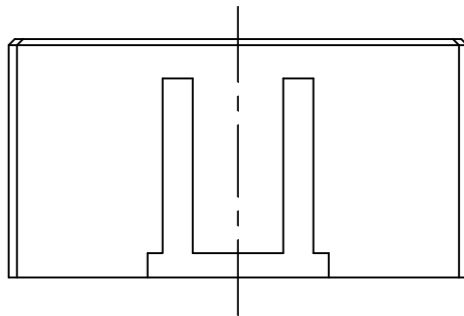
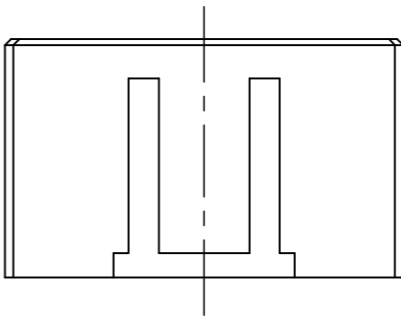
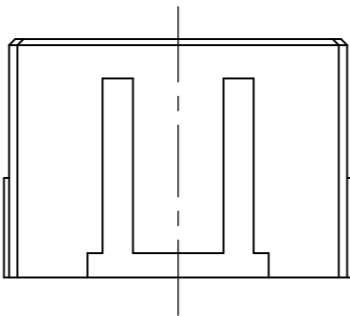
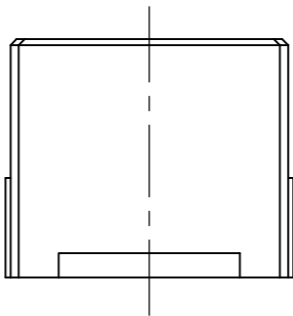
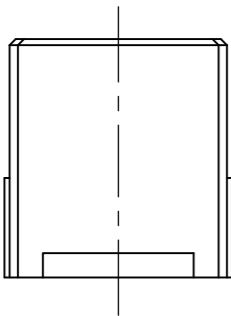
(3 POS.)

(4 POS.)

(5 POS.)

(6 POS.)

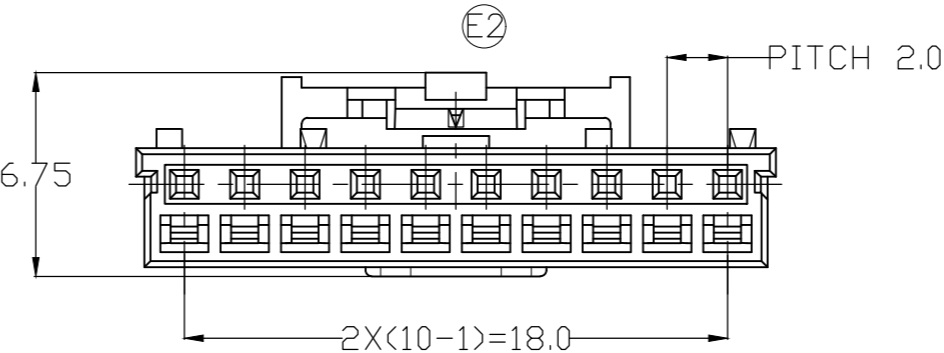
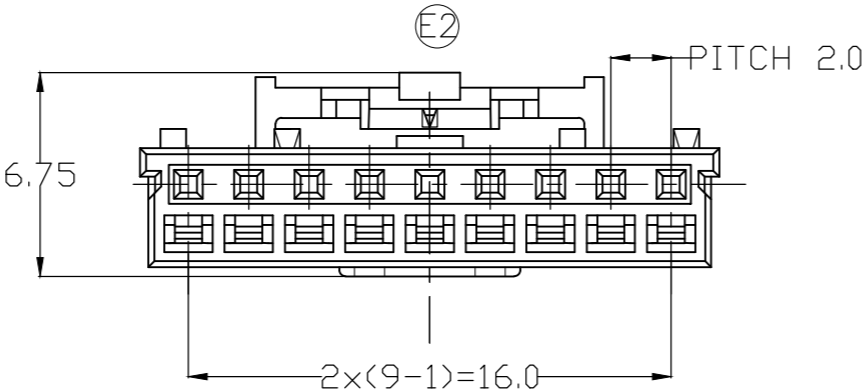
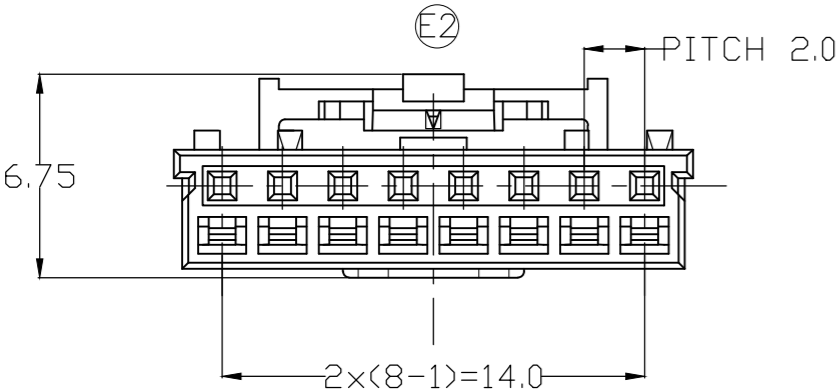
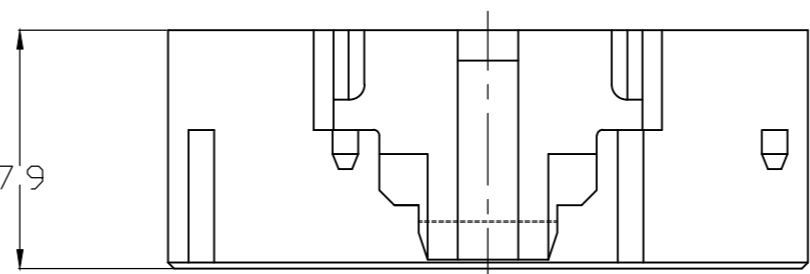
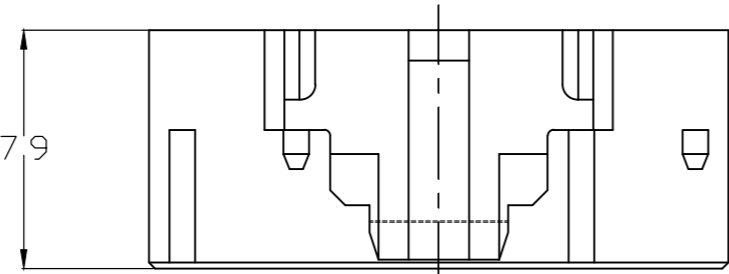
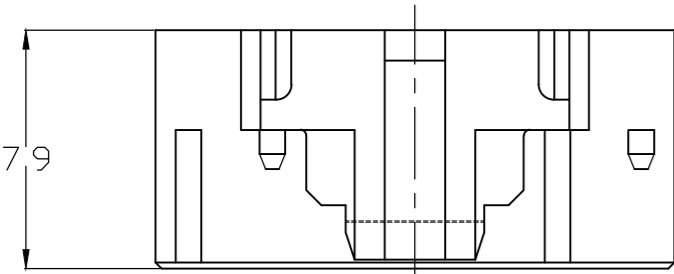
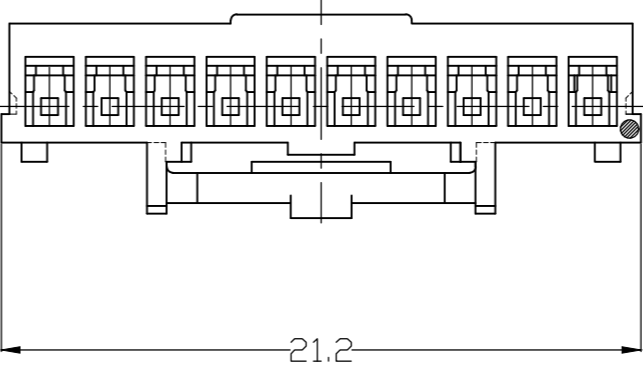
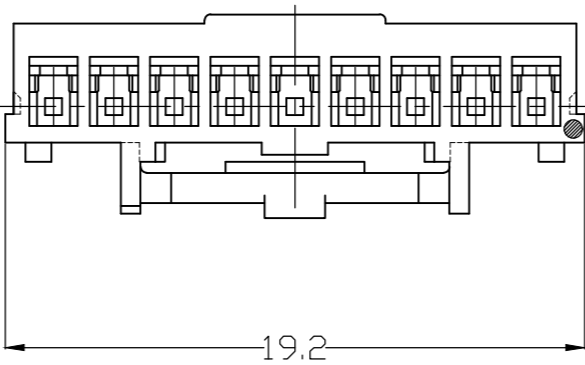
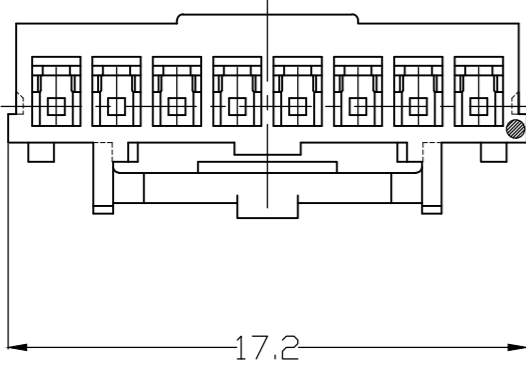
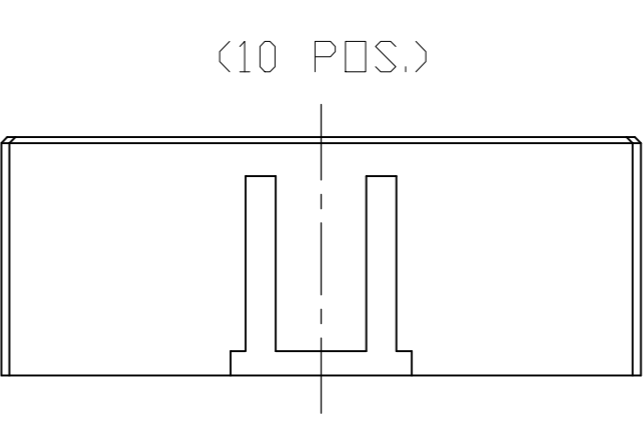
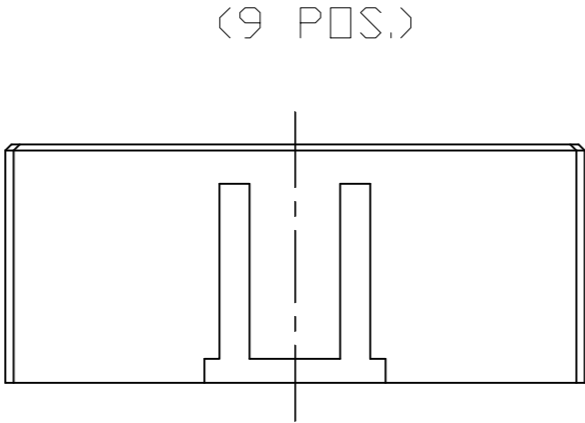
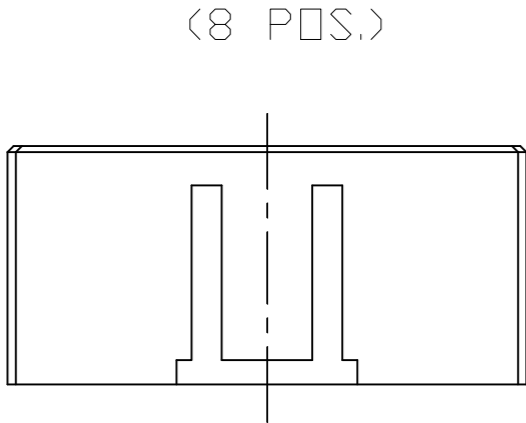
(7 POS.)



1971030

THIS DRAWING IS A CONTROLLED DOCUMENT.		DWN Liu Jimmy 11JUN2008	TE Connectivity		
DIMENSIONS: mm		CHK Wu Hapye 11JUN2008			
		APVD Zhou Julian 11JUN2008	NAME Grace Inertia Connector 2.0 EV Series Plug Housing		
		PRODUCT SPEC 108-106001			
TOLERANCES UNLESS OTHERWISE SPECIFIED:		APPLICATION SPEC 114-5425	SIZE A2	CAGE CODE 00779	DRAWING NO. C-1971030
MATERIAL —		WEIGHT —	RESTRICTED TO —		
FINISH —		CUSTOMER DRAWING		SCALE 4:1	SHEET 2 OF 3
				REV E2	

REVISIONS					
P	LTR	DESCRIPTION	DATE	DWN	APVD
	—	SEE SHEET 1	—	—	—



3-1971032-1	D	YELLOW	10	3-1971030-1
2-1971032-1	C	BLUE		2-1971030-1
1-1971032-1	B	RED		1-1971030-1
1971032-1	A	NATURAL		1971030-1
3-1971032-9	D	YELLOW	9	3-1971030-9
2-1971032-9	C	BLUE		2-1971030-9
1-1971032-9	B	RED		1-1971030-9
1971032-9	A	NATURAL		1971030-9
3-1971032-8	D	YELLOW	8	3-1971030-8
2-1971032-8	C	BLUE		2-1971030-8
1-1971032-8	B	RED		1-1971030-8
1971032-8	A	NATURAL		1971030-8
3-1971032-7	D	YELLOW	7	3-1971030-7
2-1971032-7	C	BLUE		2-1971030-7
1-1971032-7	B	RED		1-1971030-7
1971032-7	A	NATURAL		1971030-7
3-1971032-6	D	YELLOW	6	3-1971030-6
2-1971032-6	C	BLUE		2-1971030-6
1-1971032-6	B	RED		1-1971030-6
1971032-6	A	NATURAL		1971030-6
E1 4-1971032-5	E	BLACK	5	4-1971030-5
3-1971032-5	D	YELLOW		3-1971030-5
2-1971032-5	C	BLUE		2-1971030-5
1-1971032-5	B	RED		1-1971030-5
1971032-5	A	NATURAL		1971030-5
3-1971032-4	D	YELLOW	4	3-1971030-4
2-1971032-4	C	BLUE		2-1971030-4
1-1971032-4	B	RED		1-1971030-4
1971032-4	A	NATURAL		1971030-4
3-1971032-3	D	YELLOW	3	3-1971030-3
2-1971032-3	C	BLUE		2-1971030-3
1-1971032-3	B	RED		1-1971030-3
1971032-3	A	NATURAL		1971030-3
E1 4-1971032-2	E	BLACK	2	4-1971030-2
3-1971032-2	D	YELLOW		3-1971030-2
2-1971032-2	C	BLUE		2-1971030-2
1-1971032-2	B	RED		1-1971030-2
1971032-2	A	NATURAL		1971030-2
MATING CONNECTOR	KEY TYPE	COLOR	POS.	PART NUMBER
PART NUMBER				

THIS DRAWING IS A CONTROLLED DOCUMENT.

DIMENSIONS:
mm

0 PLC

1 PLC

2 PLC

3 PLC

4 PLC

ANGLES

TOLERANCES UNLESS OTHERWISE SPECIFIED:

±

±

±

±

±

±

DWN
Liu Jimmy
CHK
Wu Sam
APVD
Zhou Julian

11JUN2008
11JUN2008
11JUN2008

PRODUCT SPEC
108-106001
APPLICATION SPEC
114-5425
WEIGHT
—

CUSTOMER DRAWING

NAME
Grace Inertia Connector 2.0 EV Series Plug Housing

SIZE
A2

CAGE CODE
00779

DRAWING NO
C-1971030

RESTRICTED TO
—

SCALE
4:1

SHEET
3 of 3

REV
E2

TE Connectivity

TE

1471-9 (1/15)

Mouser Electronics

Authorized Distributor

Click to View Pricing, Inventory, Delivery & Lifecycle Information:

[TE Connectivity:](#)

[1-1971032-6](#) [1-1971030-1](#) [1-1971032-1](#)