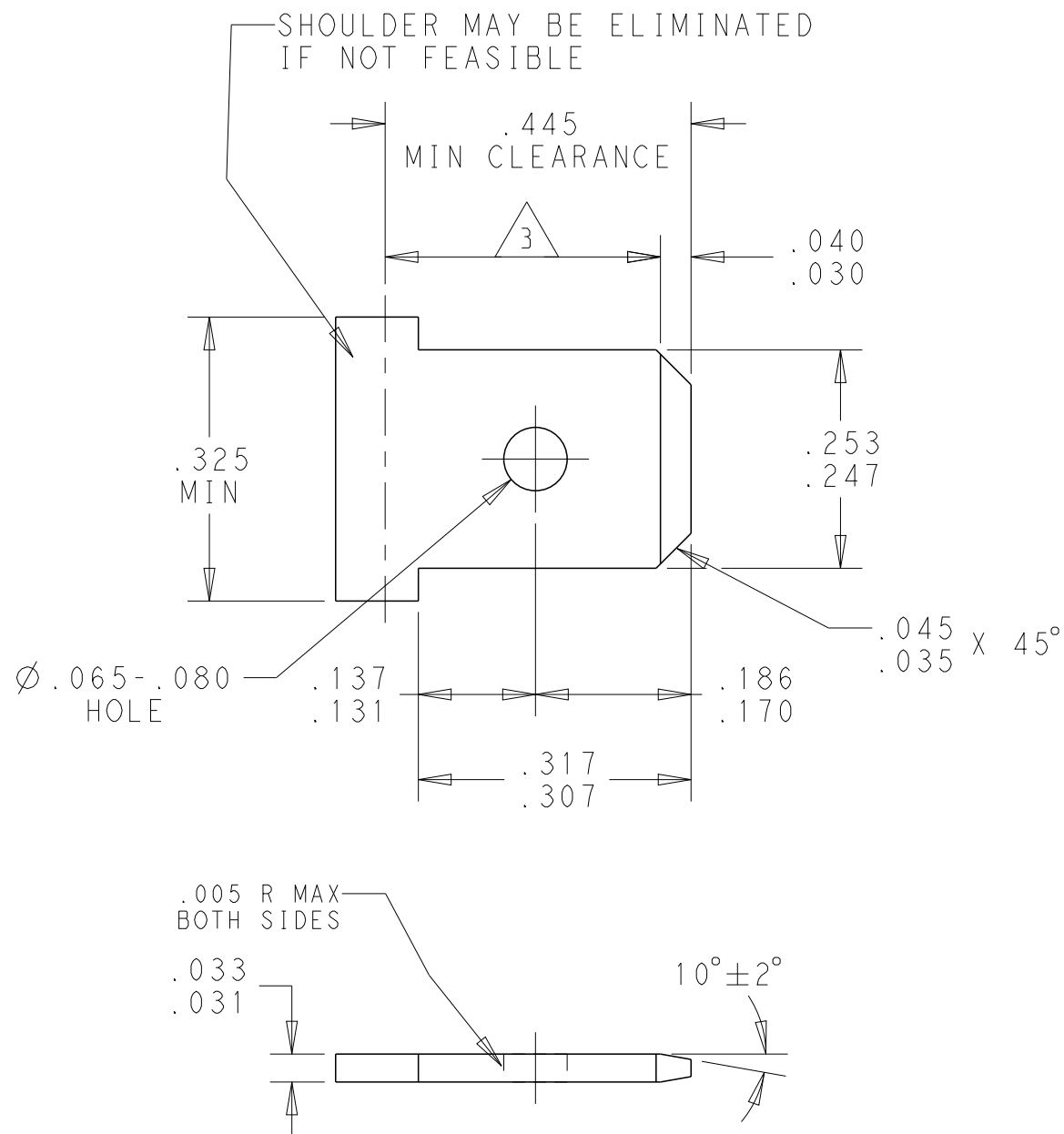
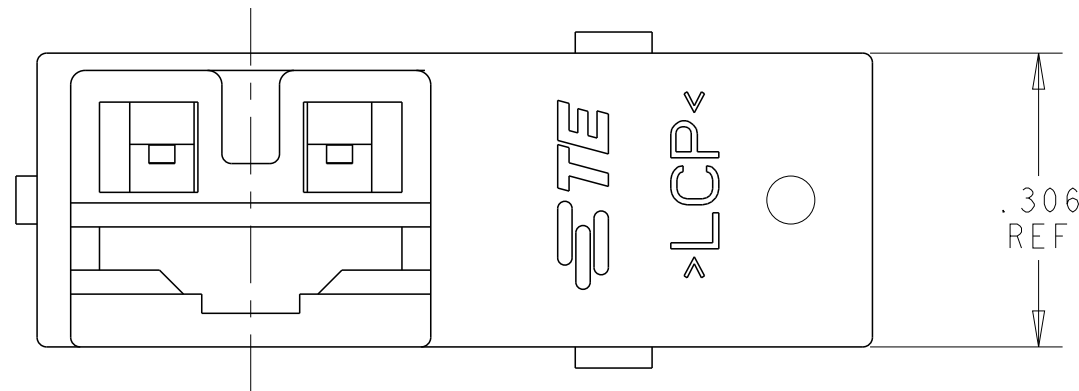
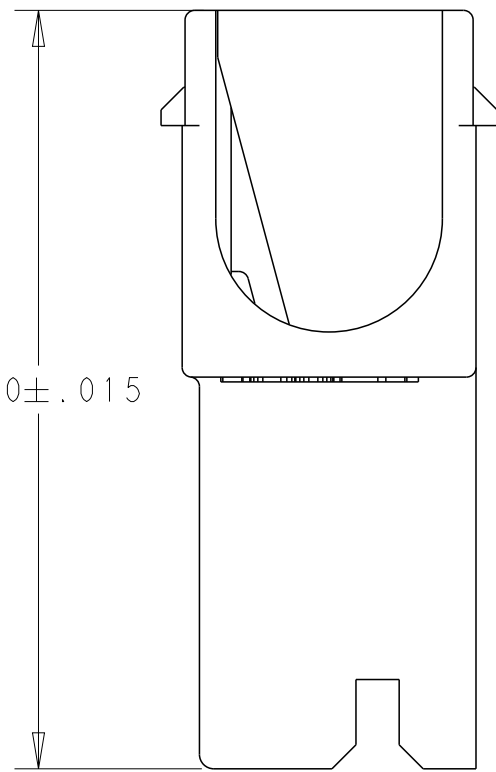
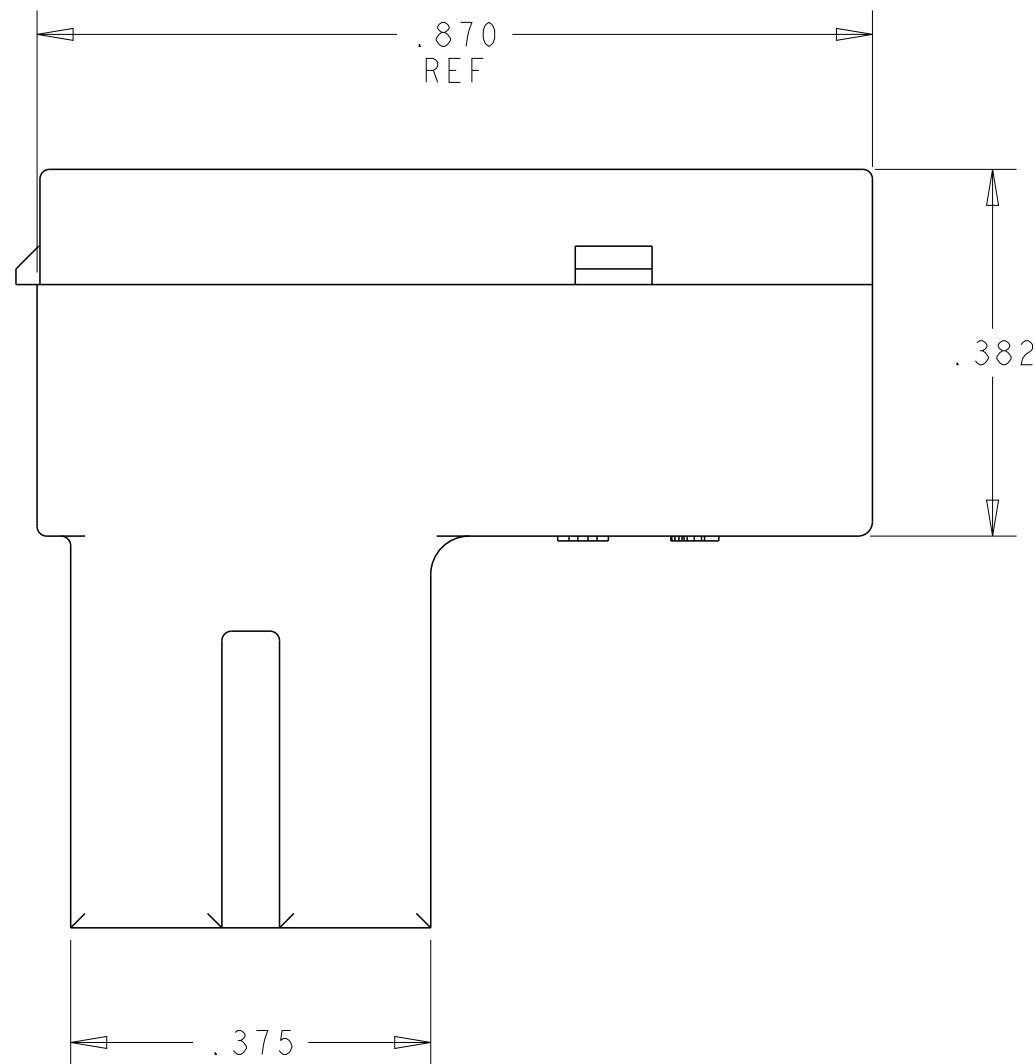
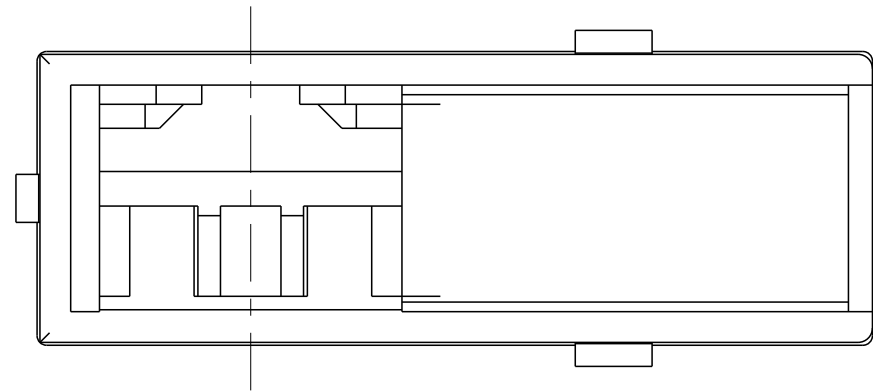


REVISIONS					
P	LTR	DESCRIPTION	DATE	DWN	APVD
	A	REVISED PER ECR-17-015197	23OCT2017	BDA	MD

SUGGESTED MATING TAB


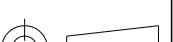


- 1 MATERIAL: 1/2 H BRASS OR NICKEL PL STEEL.
- 2 NO BURRS PERMISSIBLE AT HOLE.
- 3 MUST BE FLAT WITHIN 0.076[.003] OVER THIS LENGTH.
- 4 TIN PLATING IS REQUIRED ON BRASS WHEN TERMINAL TEMP. IS OVER 225°F
- 5 HOLE MUST BE SYMMETRICAL ABOUT TAB ϕ WITHIN 0.076[.003]
* TO BE USED ONLY WHEN SHOULDER IS ELIMINATED.



- 1 FOR USE WITH MKII POSITIVE LOCK TERMINALS 2238141, 2238106 AND 2238105
- 2 THIS PRODUCT HAS NOT COMPLETED QUALIFICATION TESTING

LCP	1969823-1	2
MATERIAL	PART NUMBER	

THIS DRAWING IS A CONTROLLED DOCUMENT.		DWN BASVESH WARAD 13JAN2016		 TE Connectivity				
DIMENSIONS:		CHK DIDONATO, MICHAEL 13JAN2016						
i n		APVD DIDONATO, MICHAEL 13JAN2016		NAME FASTON HOUSING				
		TOLERANCES UNLESS OTHERWISE SPECIFIED:		PRODUCT SPEC				
		0 PLC ±- 1 PLC ±- 2 PLC ±- 3 PLC ±.010 4 PLC ±- ANGLES ±- FINISH		108-143022				
MATERIAL LCP		WEIGHT -		SIZE A2	CAGE CODE -	DRAWING NO C=1969823	RESTRICTED TO -	
		CUSTOMER DRAWING				SCALE 5:1	SHEET 1 OF 1	REV A

Mouser Electronics

Authorized Distributor

Click to View Pricing, Inventory, Delivery & Lifecycle Information:

[TE Connectivity:](#)

[1969823-1](#)