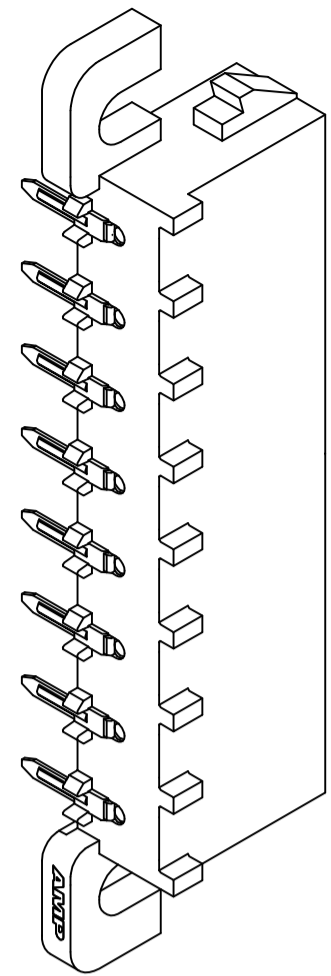
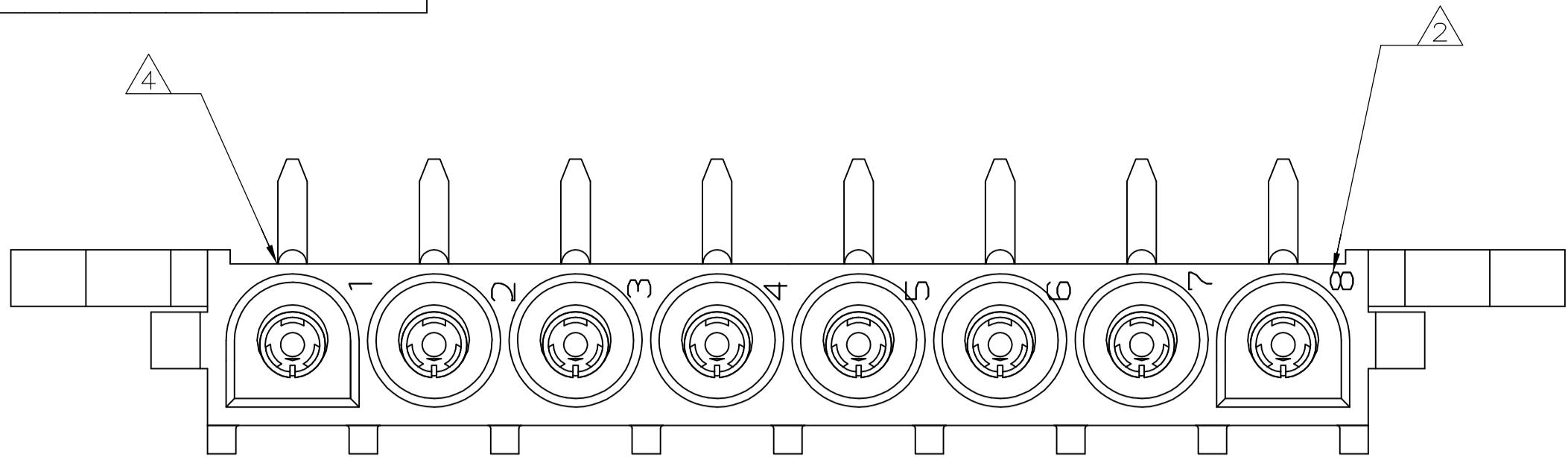
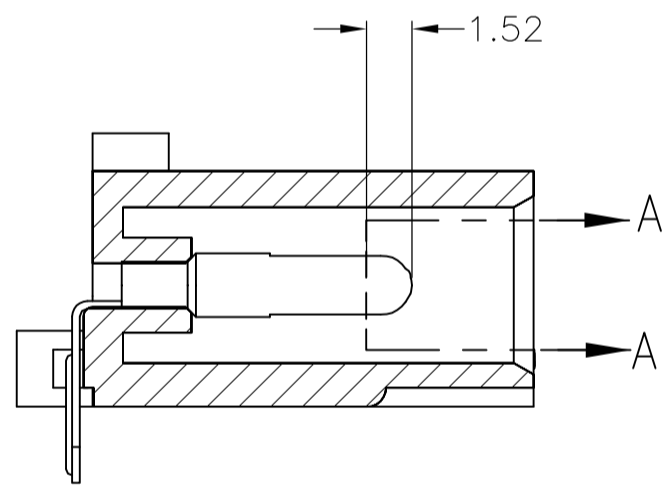
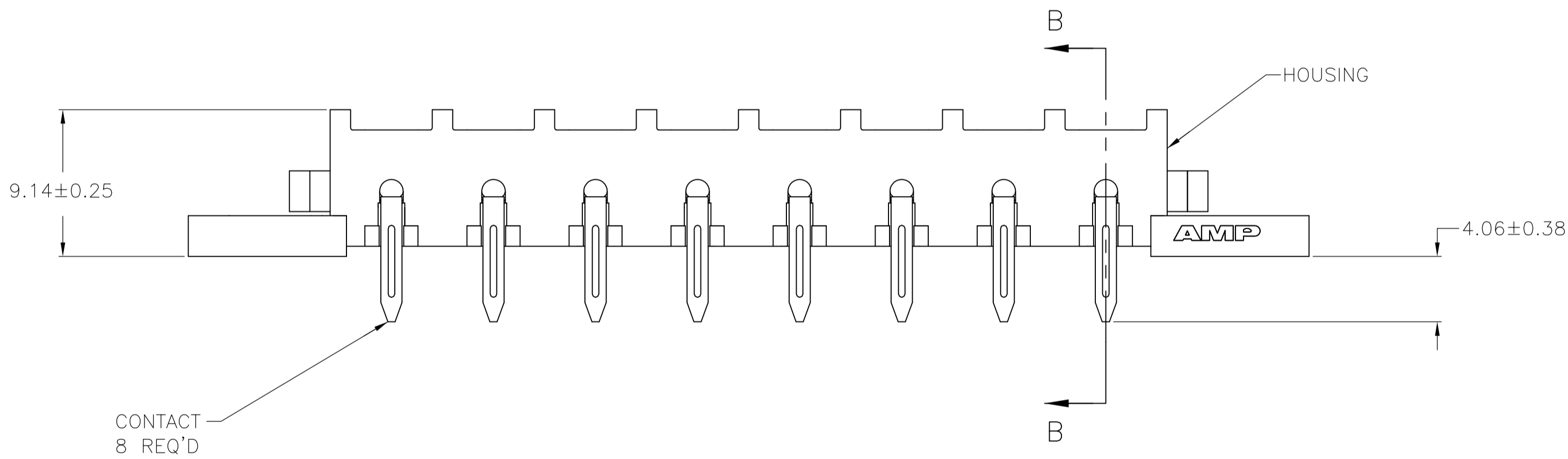
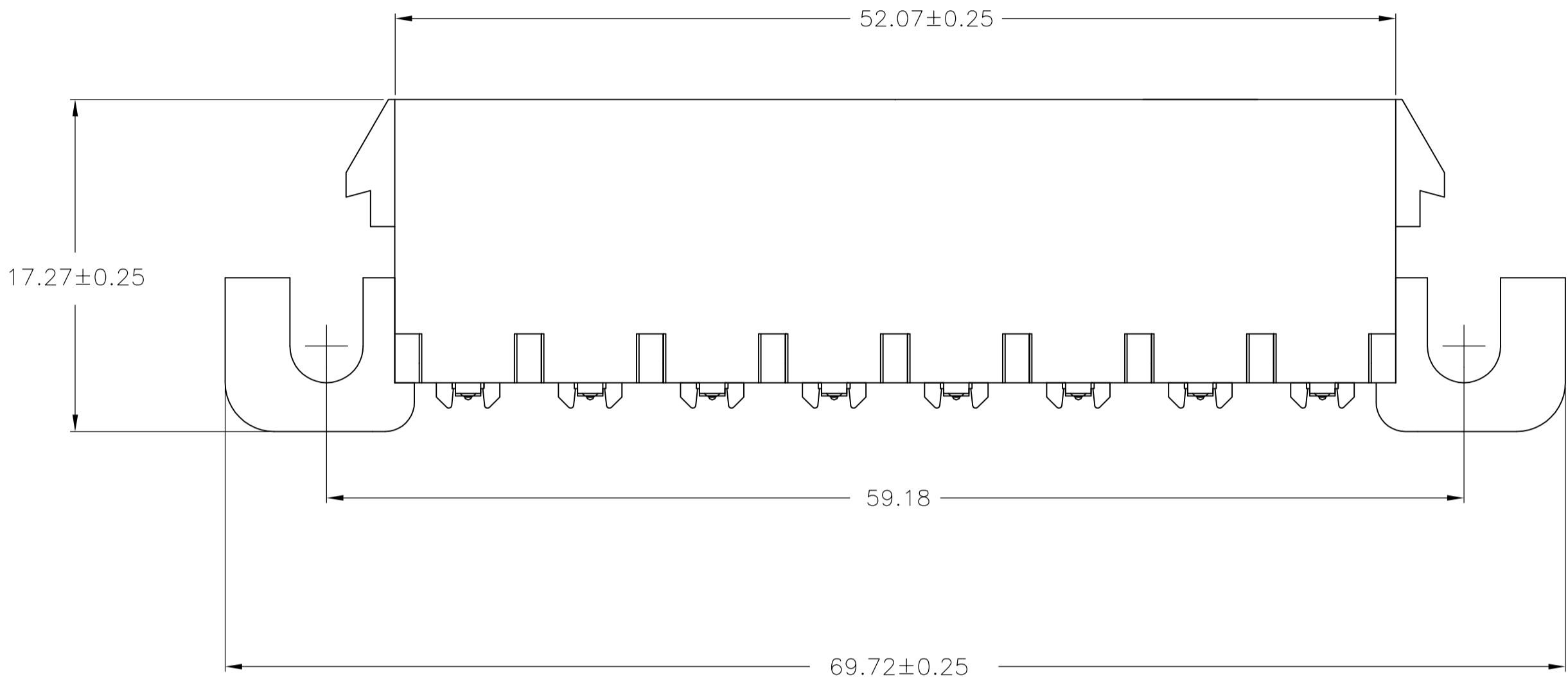


REVISIONS				
P	LTR	DESCRIPTION	DATE	DWN
A1	REVISED	PER ECR-17-007706	05JUL2017	JB

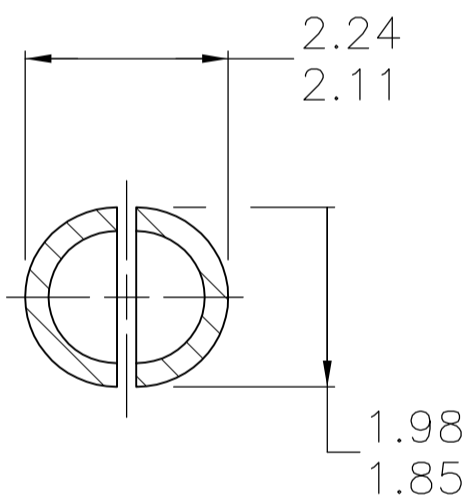


3-DIMENSIONAL MODEL  
NTS

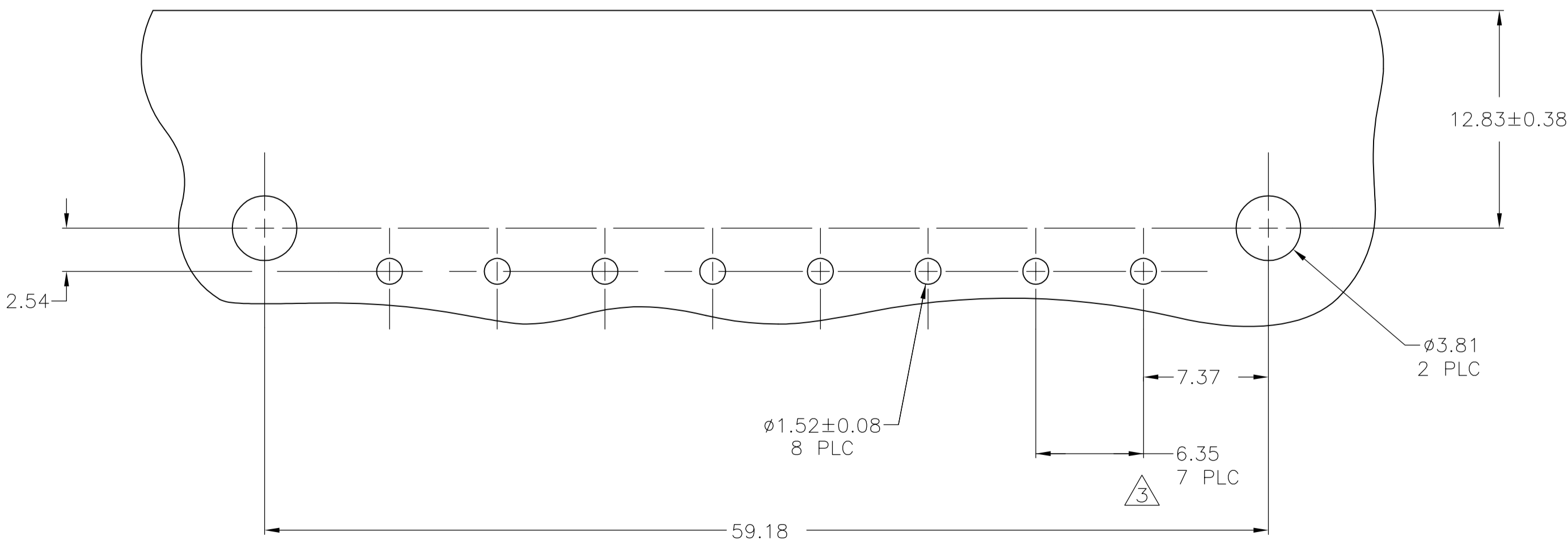
- 1 PARTS COMPLY WITH AMP SOLDERABILITY SPECIFICATION 109-11-5.
- 2 CIRCUIT IDENTIFICATION CHARACTERS ARE ADJACENT TO THE INDICATED CAVITIES,BUT LOCATION AND ORIENTATION MAY DIFFER FROM PRINT.
- 3 TOLERANCE NON-CUMLATIVE
- 4 OPTIONAL CONSTRUCTION MAY DELETE THIS RIB.
- 5 FLAMMABILITY UL V-0 FOR THICKNESS 0.4, 0.45, 0.8, 1.6, AND 3.0 PER IEC 60695-11-10.
- 6 GLOW WIRE FLAMMABILITY (GWFI): 960°C FOR THICKNESS 0.45, 0.8, 1.6, AND 3.0 PER IEC 60695-2-12.
- 7 GLOW WIRE IGNITION (GWIT): 825°C FOR THICKNESS 0.45, 800°C FOR THICKNESS 0.8, 775°C FOR THICKNESS 1.6 AND 3.0 PER IEC 60695-2-13.



SECTION B-B



SECTION A-A  
SCALE 10:1



RECOMMENDED MOUNTING HOLE PATTERN  
FOR 1.57 THICK P.C. BOARD

2.29	.090	—	—
2.24	.088	69.72	2.745
2.11	.083	59.18	2.330
1.98	.078	52.07	2.050
1.85	.073	17.27	.680
1.57	.062	12.83	.505
1.52	.060	9.14	.360
0.38	.015	7.37	.290
0.25	.010	6.35	.250
0.13	.005	4.57	.180
0.08	.003	4.06	.160
0.00127	.000050	3.81	.150
0.00076	.000030	2.54	.100
MM	IN	MM	IN

CONVERSION TABLE

THIS DRAWING IS A CONTROLLED DOCUMENT.		DWN BASVESH WARAD	28DEC2015	STE TE Connectivity	
DIMENSIONS: mm		CHK WICKES, EVAN	28DEC2015		
TOLERANCES UNLESS OTHERWISE SPECIFIED:		APVD WICKES, EVAN	28DEC2015	NAME	
0 PLC ± —		PRODUCT SPEC		PIN HEADER ASSEMBLY, RIGHT ANGLE MOUNT,8 POSITION, UNIVERSAL MATE-N-LOK(TM)	
1 PLC ± —		APPLICATION SPEC		SIZE CAGE CODE DRAWING NO	
2 PLC ± 0.13		WEIGHT 0.000000		A1 00779 C=1969815	
3 PLC ± —		CUSTOMER DRAWING		RESTRICTED TO	
4 PLC ± —		SCALE 4:1		SHEET 1 OF 1	
ANGLES ± —		REV A1			

# Mouser Electronics

Authorized Distributor

Click to View Pricing, Inventory, Delivery & Lifecycle Information:

[TE Connectivity:](#)

[1969815-1](#)