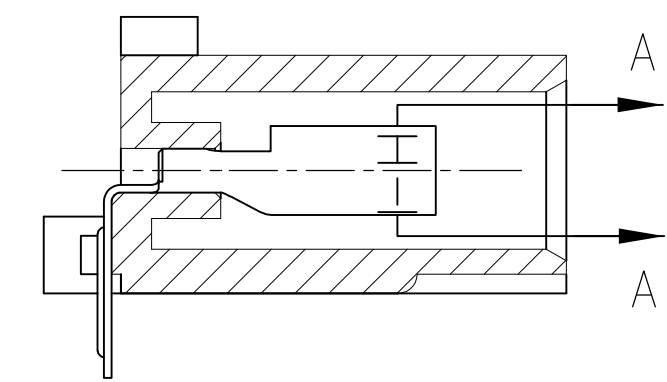
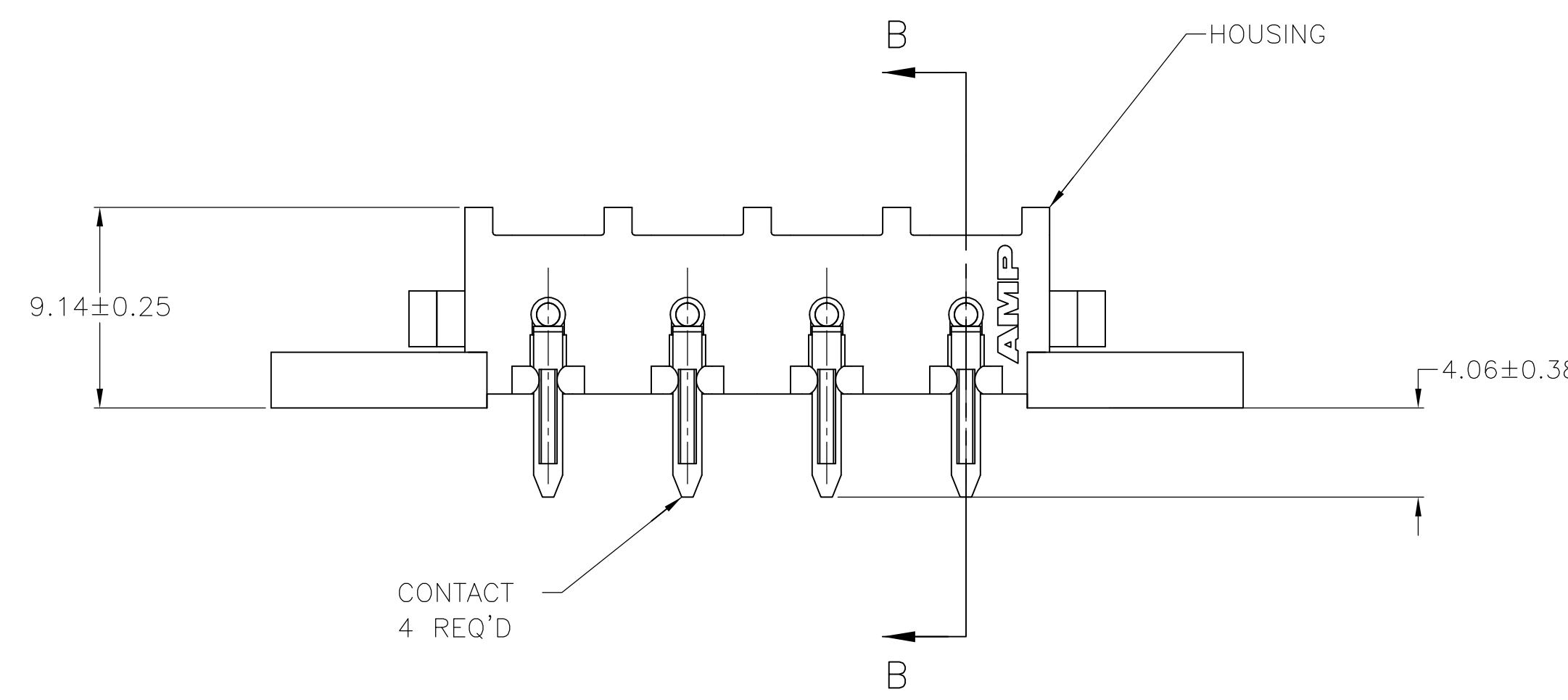
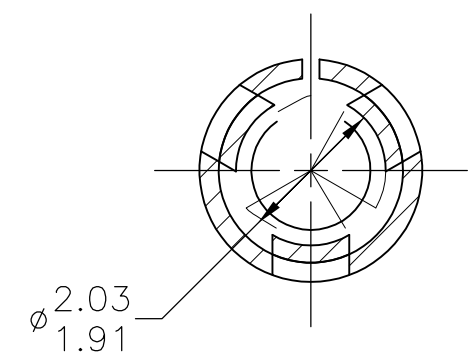


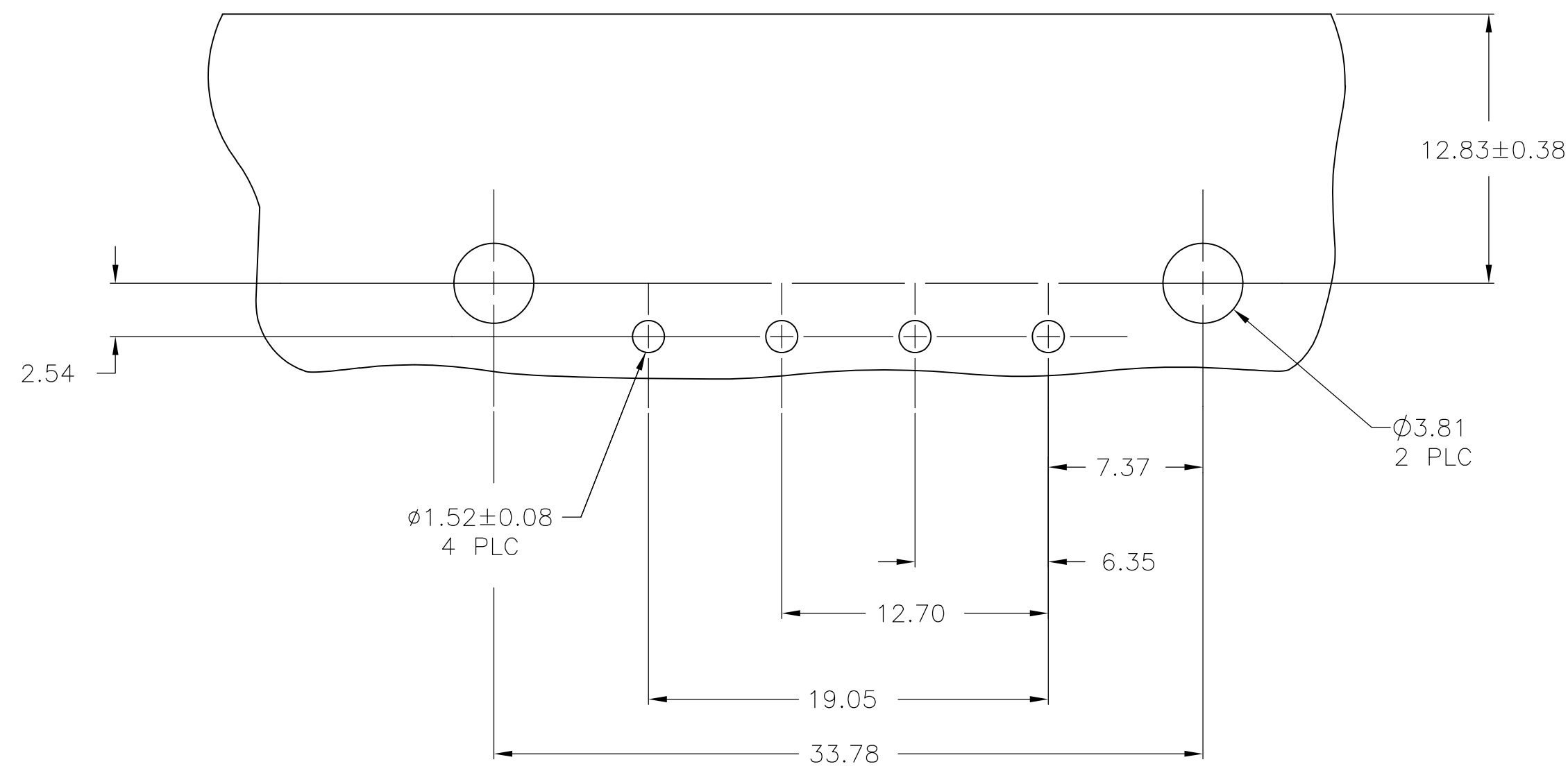
- 1 PARTS COMPLY WITH TE SOLDERABILITY SPECIFICATION 109-11-5.
- 2 CIRCUIT IDENTIFICATION CHARACTERS ARE ADJACENT TO THE INDICATED CAVITIES,BUT LOCATION AND ORIENTATION MAY BE DIFFER FROM PRINT.
- 3 FLAMMABILITY UL V-0 FOR THICKNESS 0.4, 0.45, 0.8, 1.6, AND 3.0 PER IEC 60695-11-10.
- 4 GLOW WIRE FLAMMABILITY (GWFI): 960°C FOR THICKNESS 0.45, 0.8, 1.6, AND 3.0 PER IEC 60695-2-12.
- 5 GLOW WIRE IGNITION (GWIT): 825°C FOR THICKNESS 0.45, 800°C FOR THICKNESS 0.8, 775°C FOR THICKNESS 1.6 AND 3.0 PER IEC 60695-2-13.



SECTION B-B



SECTION A-A
SCALE 10:1



RECOMMENDED MOUNTING HOLE PATTERN
FOR 1.57 THICK P.C. BOARD

3.81	.150		
2.54	.100		
2.03	.080	44.32	1.745
1.91	.075	33.78	1.330
1.57	.062	26.67	1.050
1.52	.060	19.05	.750
1.27	.050	17.27	.680
0.38	.015	12.83	.505
0.25	.010	12.70	.500
0.13	.005	9.14	.360
0.08	.003	7.37	.290
.00127	.000050	6.35	.250
.00076	.000030	4.06	.160
MM	IN	MM	IN

CONVERSION TABLE

PH BRZ,TIN		NYLON, UL V-0 GW		1969806-1	
CONTACT		HOUSING		PART NUMBER	

THIS DRAWING IS A CONTROLLED DOCUMENT.

DIMENSIONS:
mm

MATERIAL
SEE TABLE

FINISH
SEE TABLE

WEIGHT
—

TOLERANCES UNLESS OTHERWISE SPECIFIED:
0 PLC ± —
1 PLC ± —
2 PLC ± 0.13
3 PLC ± —
4 PLC ± —
ANGLES ± —

DWN
BASVESH WARAD
CHK
WICKES EVAN
APVD
WICKES EVAN

01JAN2016
01JAN2016
01JAN2016

TE Connectivity

NAME
SOCKET HEADER ASSEMBLY,
RIGHT ANGLE MOUNT,4 POSITION,
UNIVERSAL MATE-N-LOK(TM)

SIZE
A1

CAGE CODE
00779

DRAWING NO
1969806

RESTRICTED TO
—

CUSTOMER DRAWING

SCALE
4:1

SHEET
1 OF 1

REV
A

4805 (3/11)

Mouser Electronics

Authorized Distributor

Click to View Pricing, Inventory, Delivery & Lifecycle Information:

[TE Connectivity:](#)

[1969806-1](#)