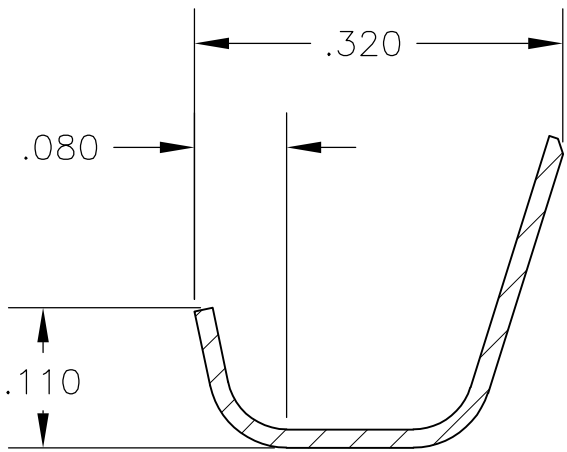
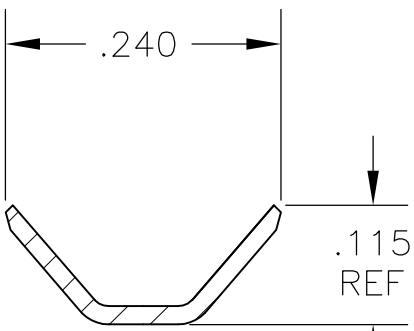


| LOC | DIST | REVISIONS | | | | | | |
|-----|------|-----------|-----|-----------------------|--|---------|-----|------|
| | | P | LTR | DESCRIPTION | | DATE | DWN | APVD |
| AF | 50 | | A2 | REV PER ECR 10-005376 | | 11MAR10 | JR | GP |

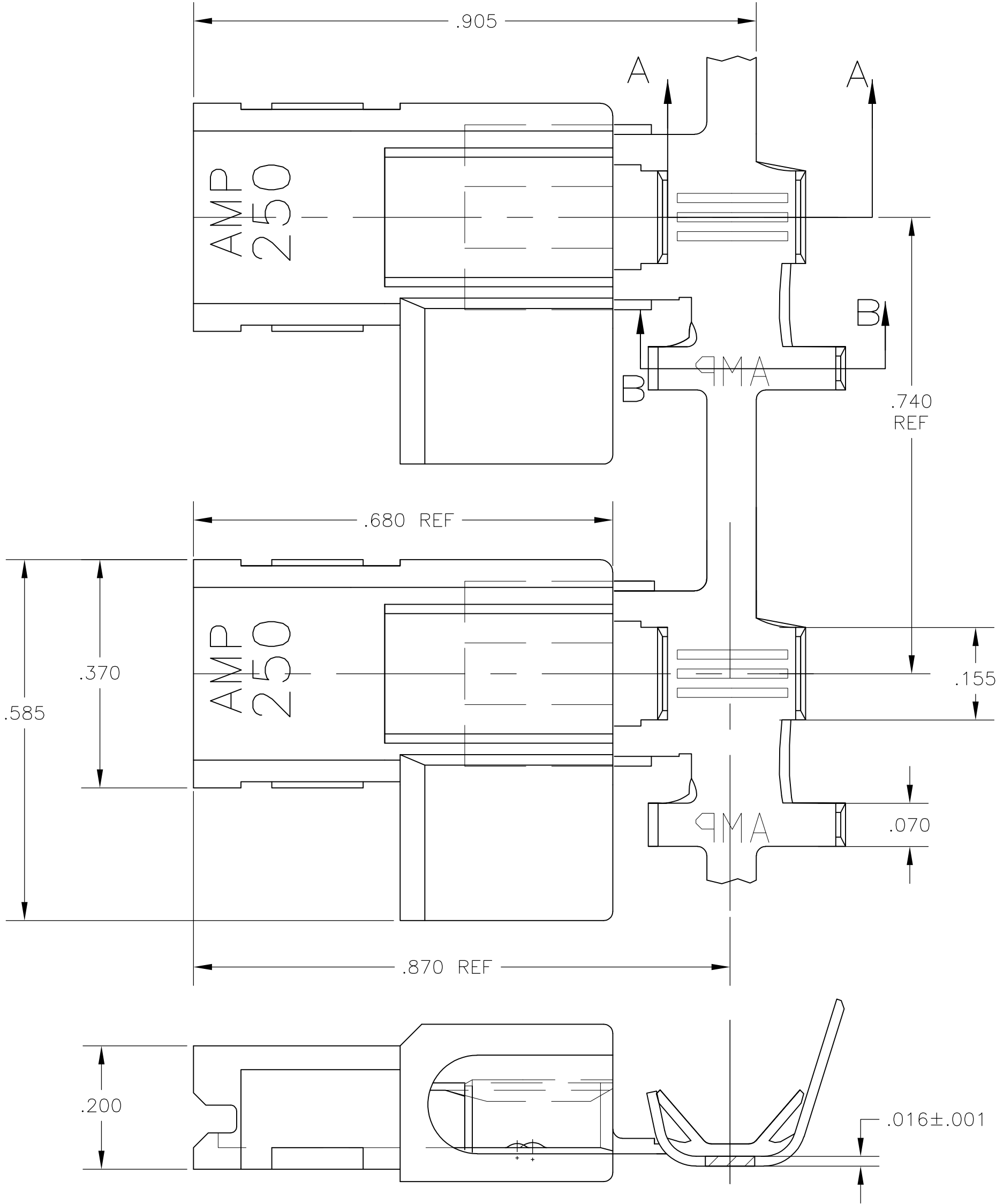
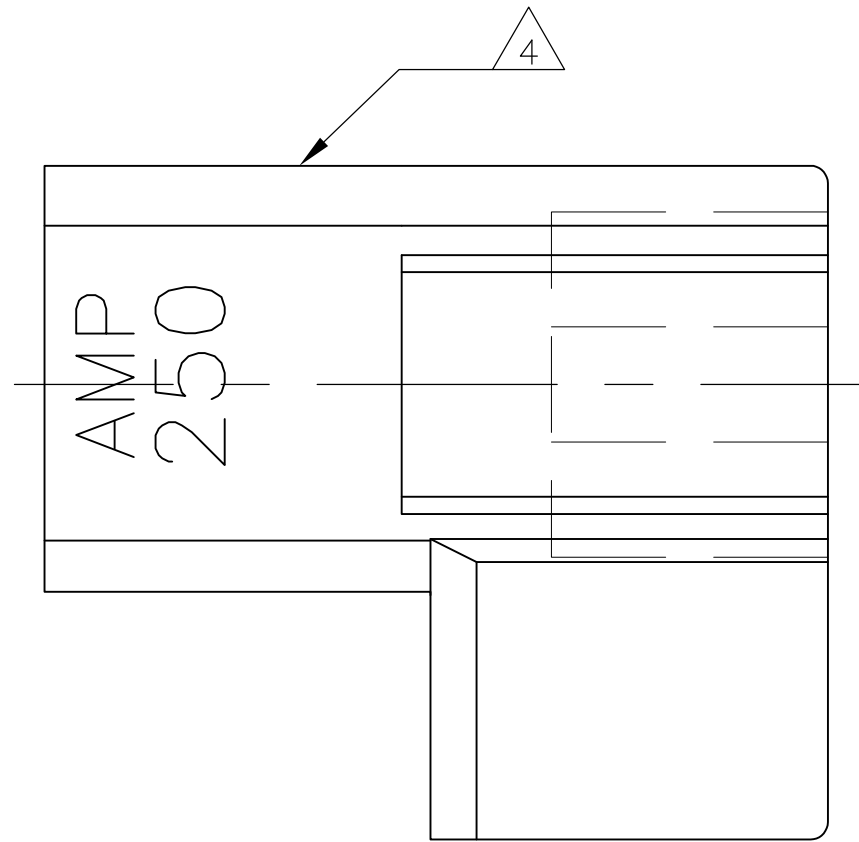
- 1 CONTINUOUS STRIP ON REELS.
- 2 INSULATION RANGE TO BE .110—.160 OR TWO AT .110 MAX DIA.
- 3 WIRE SIZE IS [#18-#14 OR TWO #20'S OR TWO #18'S].
- △4 ALTERNATE HOUSING FORM
- △5 PRELIMINARY – NOT FOR PRODUCTION.
- △6 GLOW WIRE APPROVED; CONTACT TE ENGINEERING FOR SPECIFICATION (ALL WALL THICKNESSES ARE BETWEEN 0.4-3.0[.015-.118])



SECTION A-A



SECTION B-B



| | | | | | | |
|--|--|---|--|--|--------------------|-------------------------|
| V2 NYLON / NATURAL (WHITE) | | BRASS / TIN PLATED | | <div><div>6</div></div> | 1969110-2 | |
| V2 NYLON / NATURAL (WHITE) | | BRASS / PLAIN | | <div><div>5</div></div> | 1969110-1 | |
| HOUSING MATERIAL / COLOR | | TERMINAL MATERIAL / FINISH | | PART NO | | |
| THIS DRAWING IS A CONTROLLED DOCUMENT. | | DWN 05APR2007 RAGHAVENDRA H M CHK 05APR2007 G D PORTA APVD 05APR2007 G D PORTA | | <div><div><div><div></div></div><div>Tyco Electronics</div></div><div>Tyco Electronics Corporation Harrisburg, Pa 17105-3608</div></div> | | |
| DIMENSIONS: INCHES | | TOLERANCES UNLESS OTHERWISE SPECIFIED: <div>0 PLC ± - 1 PLC ± - 2 PLC ± - 3 PLC ± .010 4 PLC ± - ANGLES ± - FINISH</div> | | NAME <div>ASSEMBLY, RECEPTACLE, FLAG, ULTRA-POD, .250SERIES -</div> | | |
| | | PRODUCT SPEC 108-1285 APPLICATION SPEC 114-2124 | | | | |
| MATERIAL SEE TABLE | | WEIGHT - | | SIZE A2 | CAGE CODE 00779 | DRAWING NO C=1969110 |
| CUSTOMER DRAWING | | | | SCALE 6:1 | SHEET 1 of 1 | REV A2 |

Mouser Electronics

Authorized Distributor

Click to View Pricing, Inventory, Delivery & Lifecycle Information:

[TE Connectivity:](#)

[1969110-2](#)