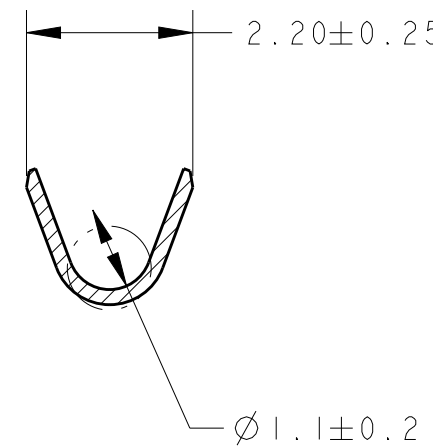
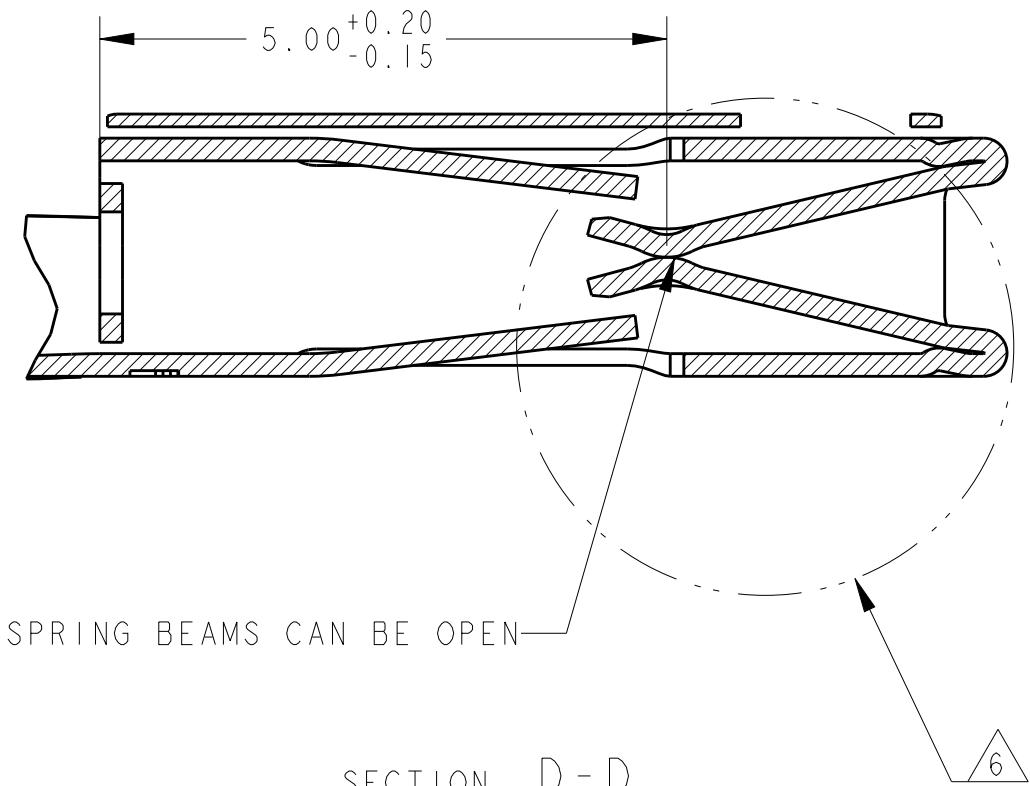
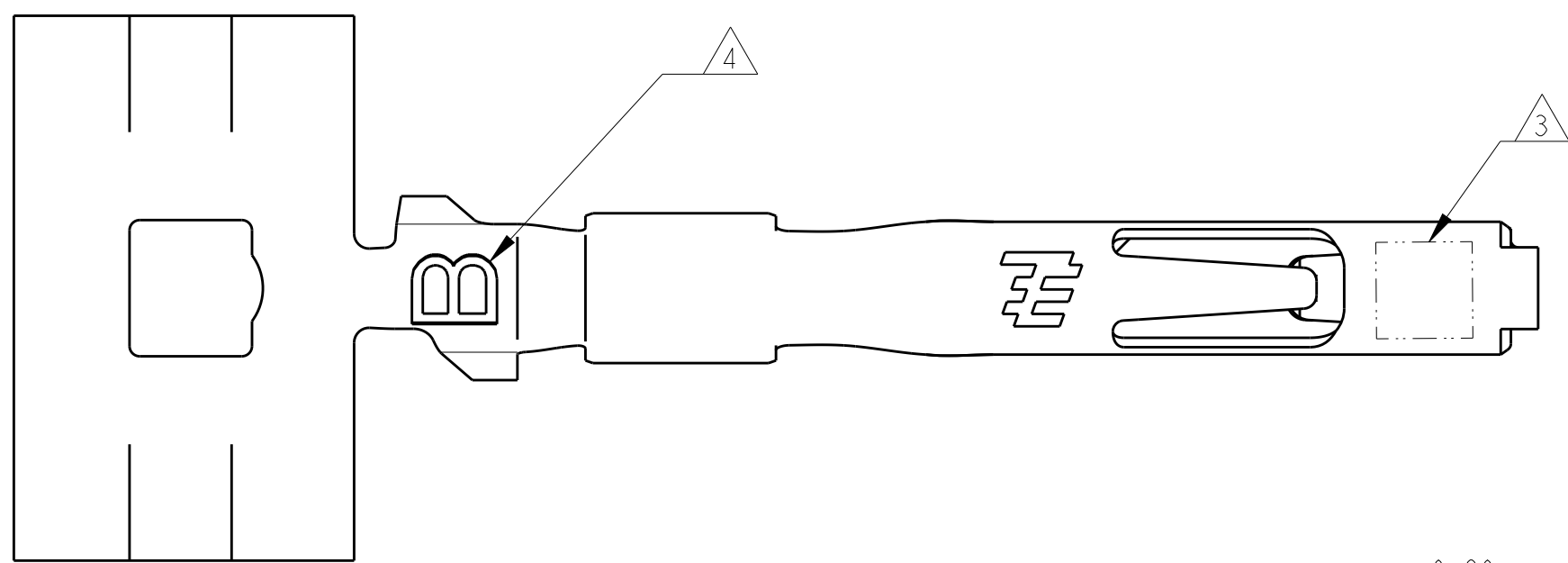


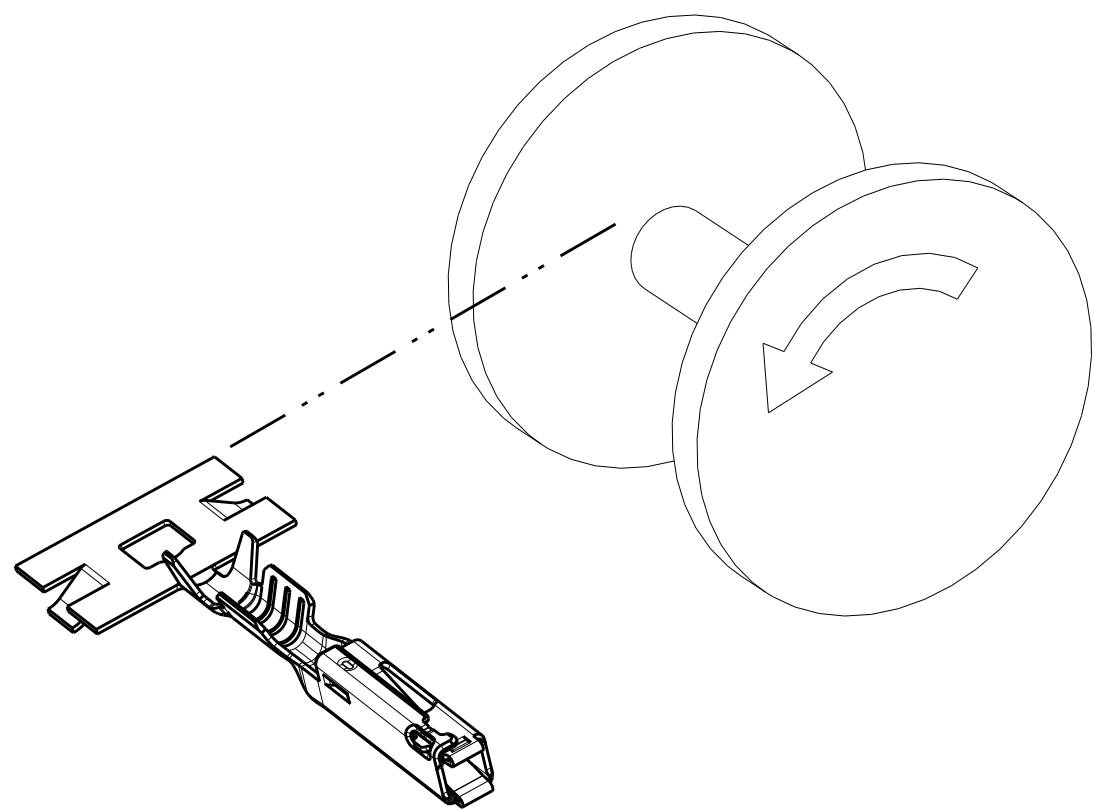
SECTION C-C



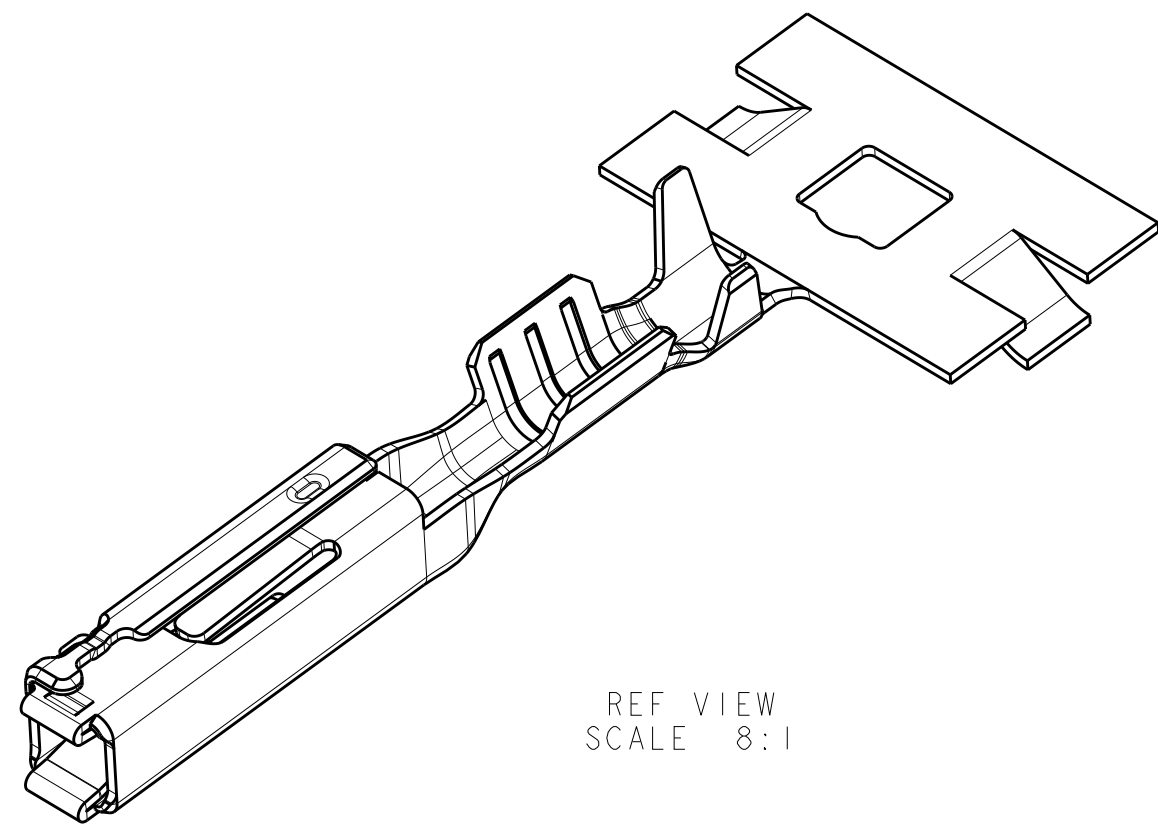
SECTION E-E



SECTION D-D
SCALE 15:1



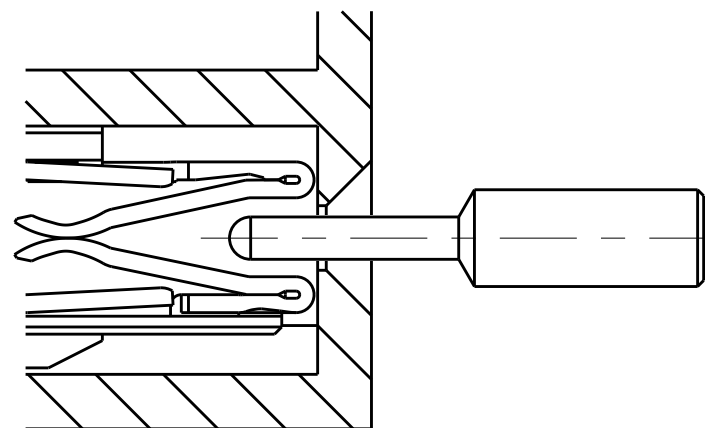
REELING DIRECTION
SCALE 4:1



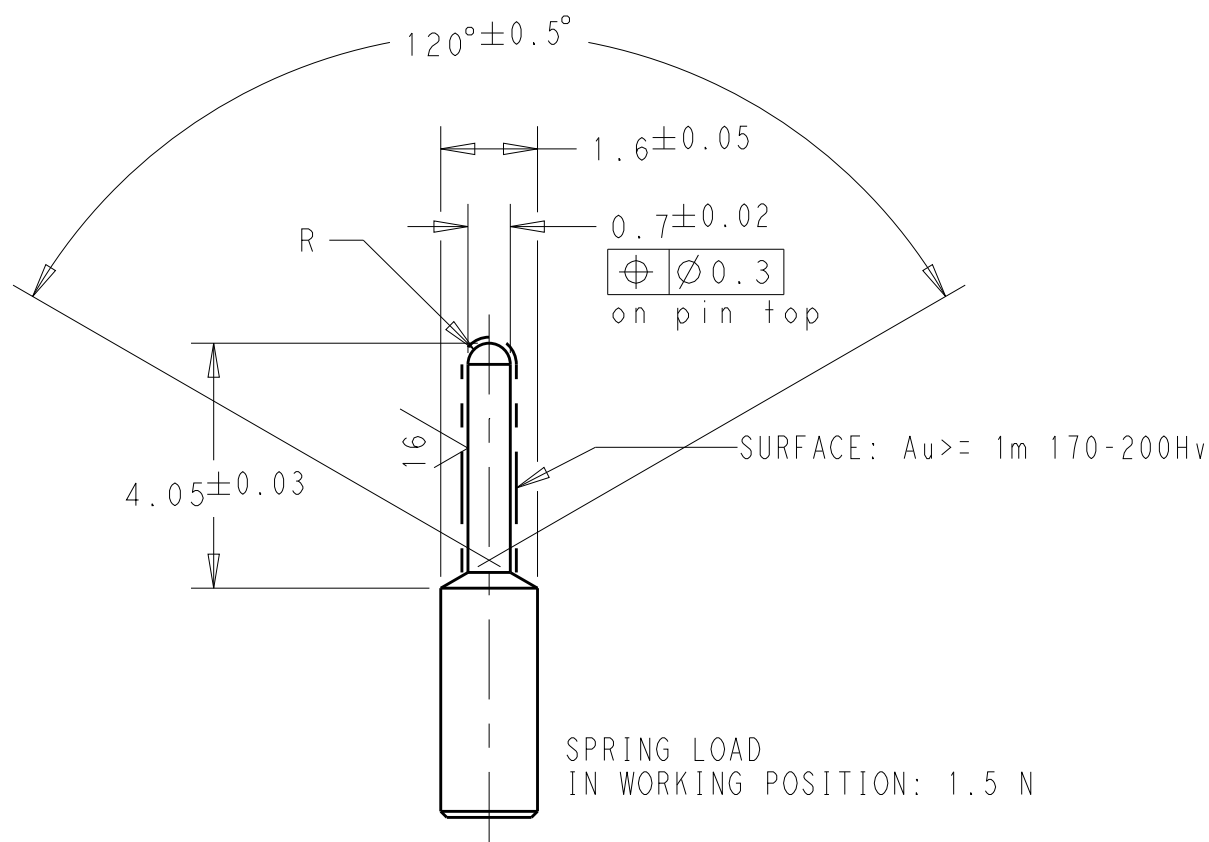
REVISIONS					
P	LTR	DESCRIPTION	DATE	DWN	APVD
B		REVISED PER ECO-15-007763	24AUG2015	DLD	WTW
C		REVISED PER ECO-16-007495	17MAY2016	DLD	WTW

- 1 MATERIAL: COPPER ALLOY
- 2 FINISH: PRE-PLATED WITH 1.00 μ m MIN SPECIAL TIN-SILVER PLATE (APPLIES TO CONTACT ALL OVER)
- 3 SYMBOL "T" INDICATES SPECIAL TIN-SILVER PLATE. SYMBOL "S" INDICATES SILVER PLATE.
- 4 MARK CRIMP CODE "B"
- 5. DIE FEED IS 8.00mm
- 6 OPTIMOL (UNDILUTED) LUBRICATION IN THIS AREA
- 7 FINISH: PRE-PLATED SILVER, 3 - 5 μ m SILVER PLATE (CONTACT AREA ONLY), SILVER FLASH REMAINDER OF PART.
- 8. FOR SILVER PLATING ON P/N 1924879-2, TARNISH IS ACCEPTABLE. ELECTRICAL PERFORMANCE IS NOT AFFECTED BY TARNISH ON ANY OF THE SILVER PLATED SURFACES OF THE TERMINAL.

VIEW SHOWING ACCESS AREA FOR POGO PIN



Dimensions of pogo pin:



For reference only

THIS DRAWING IS A CONTROLLED DOCUMENT.		DWN F. KINSEY 27APR2009	<div>TE Connectivity</div> <div>GET FEMALE TERMINAL, 1.20mm, THIN 18/20 AWG</div>		
DIMENSIONS: mm		CHK F. KINSEY 27APR2009			
		APVD W. WELLINSKY 27APR2009			
		PRODUCT SPEC			
	ANGLES	APPLICATION SPEC	SIZE	CAGE CODE	DRAWING NO
		114-13236	A1	00779	C=1924879
		WEIGHT 0.17g	RESTRICTED TO		
MATERIAL		CUSTOMER DRAWING	SCALE 10:1	SHEET 1 OF 1	REV C

Mouser Electronics

Authorized Distributor

Click to View Pricing, Inventory, Delivery & Lifecycle Information:

[TE Connectivity:](#)

[1924879-2](#)