



4

3

2

1

THIS DRAWING IS UNPUBLISHED.

RELEASED FOR PUBLICATION

-.-.



COPYRIGHT 2011

BY TYCO ELECTRONICS CORPORATION.

ALL RIGHTS RESERVED.

LOC

DIST

REVISIONS

P

LTR

DESCRIPTION

DATE

DWN

APVD

SEE SHEET 1.

D

D

C

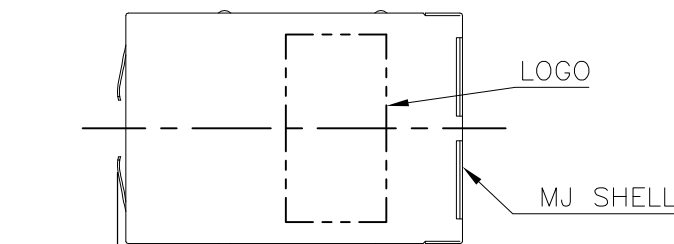
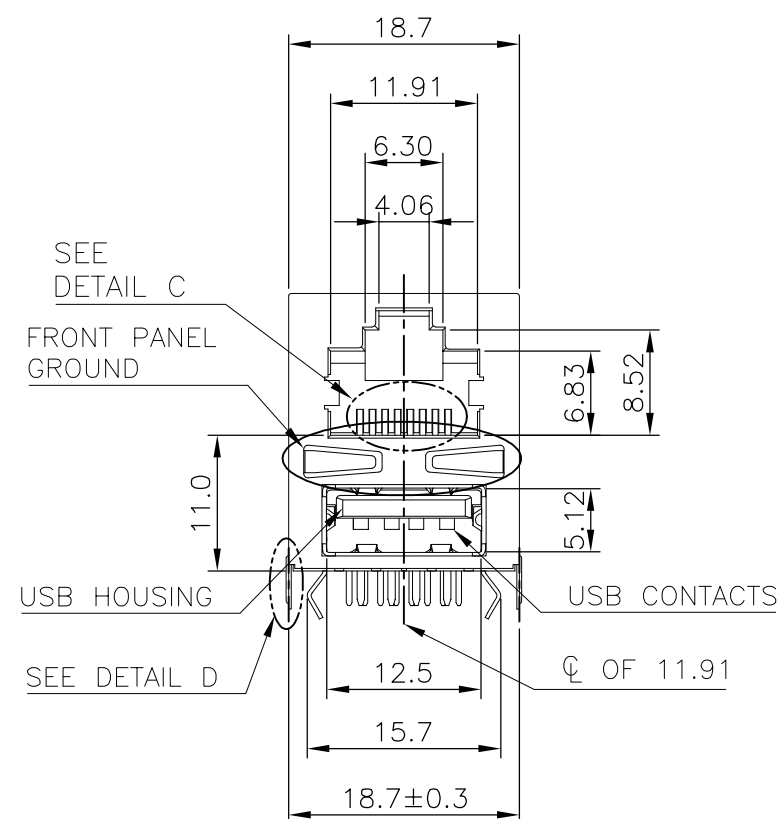
C

B

B

A

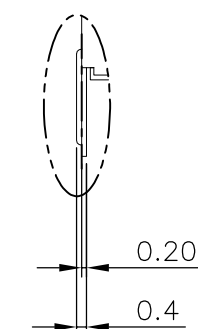
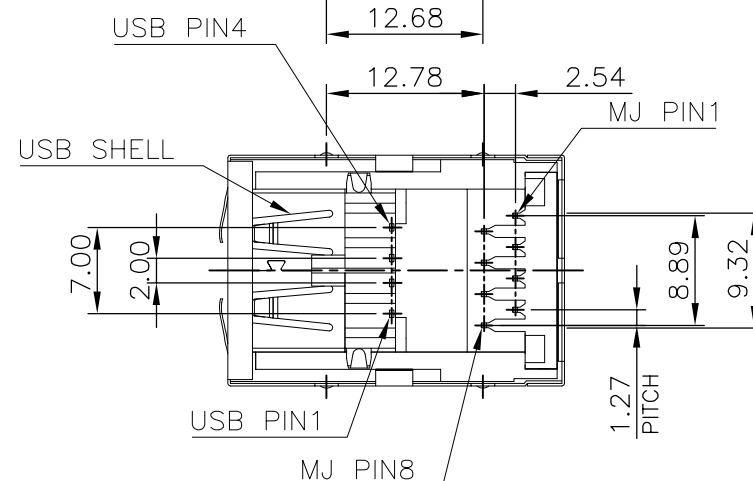
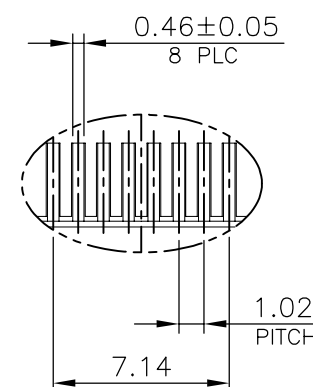
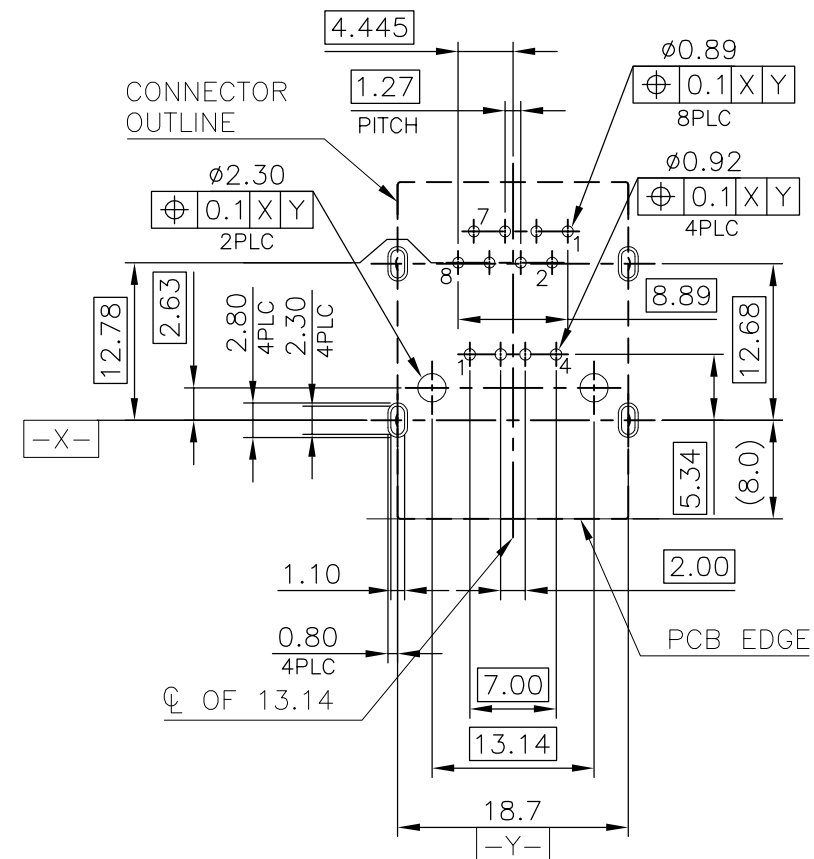
A



DATE CODE

MJ HOUSING

MJ CONTACTS

DETAIL D  
SCALE 2:1DETAIL C  
SCALE 2:1

RECOMMENDED PCB LAYOUT

RECOMMENDED PCB THICKNESS: 1.6mm.  
TOLERANCE: ±0.05 (TOP VIEW)

1909119-4

PART NUMBER

THIS DRAWING IS A CONTROLLED DOCUMENT.

DWN

CHK

APVD

PRODUCT SPEC

APPLICATION SPEC

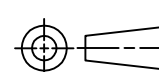
WEIGHT

12.09 GRAMS

CUSTOMER DRAWING

DIMENSIONS:

mm



MATERIAL

SEE NOTE

TOLERANCES UNLESS  
OTHERWISE SPECIFIED:0 PLC ± -  
1 PLC ± 0.3  
2 PLC ± 0.2  
3 PLC ± 0.15  
4 PLC ± -  
ANGLES ± 3°

SEE NOTE



TE Connectivity

NAME

MODULAR JACK CONNECTOR OVER USB CONNECTOR  
STACKED, DIP TYPE

SIZE

CAGE CODE

DRAWING NO

RESTRICTED TO

A3

00779

C=

1909119

SCALE

SHEET

2 OF 6

REV

C



4

3

2

1

THIS DRAWING IS UNPUBLISHED.

RELEASED FOR PUBLICATION

-.-



COPYRIGHT 2011

BY TYCO ELECTRONICS CORPORATION.

ALL RIGHTS RESERVED.

LOC

DIST

REVISIONS

P

LTR

DESCRIPTION

DATE

DWN

APVD

SEE SHEET 1.

D

D

C

C

B

B

A

A

## NOTE:

## 1. MATERIAL:

1.1 MJ HOUSING: PA9T, WITH 30% GF,  
UL 94V-0, BLACK COLOR.

1.2 MJ CONTACTS: PHOSPHOR BRONZE.

1.3 MJ SHELL: BRASS.

1.4 USB HOUSING: PA9T, WITH 30% GF, UL94V-0,  
BLACK COLOR.

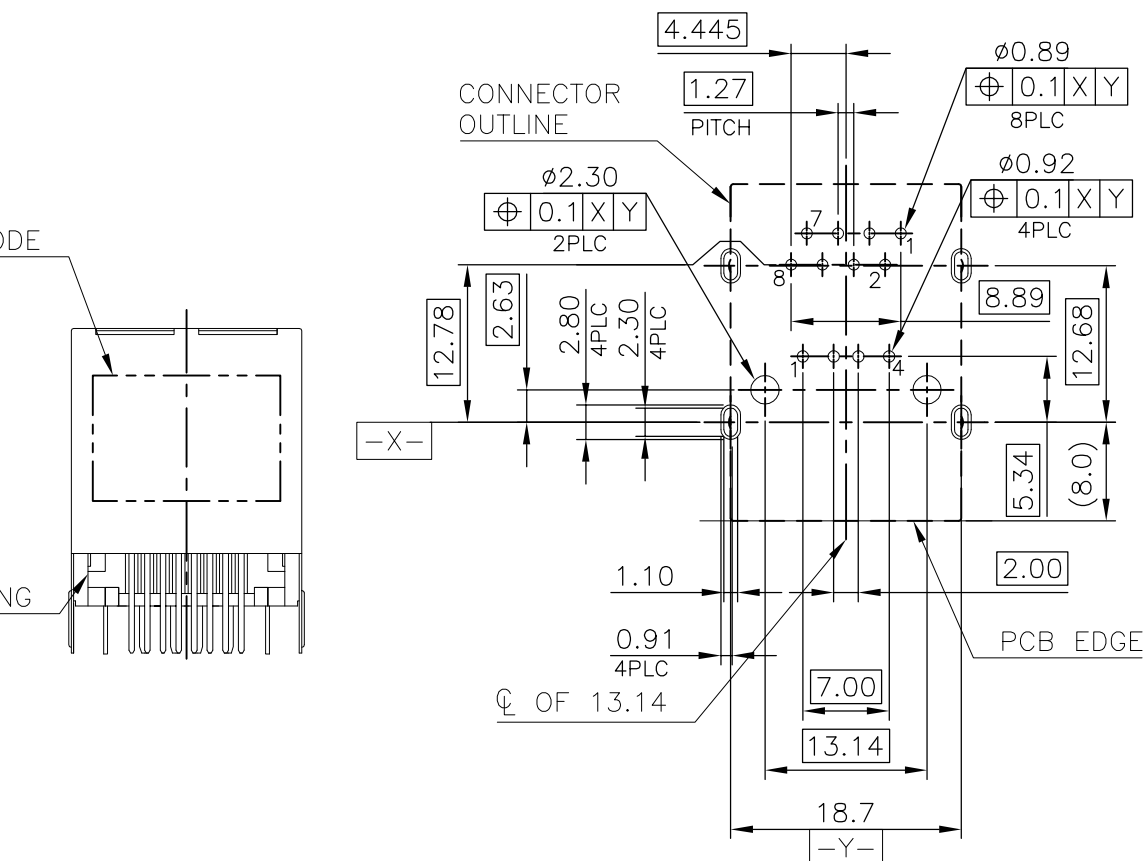
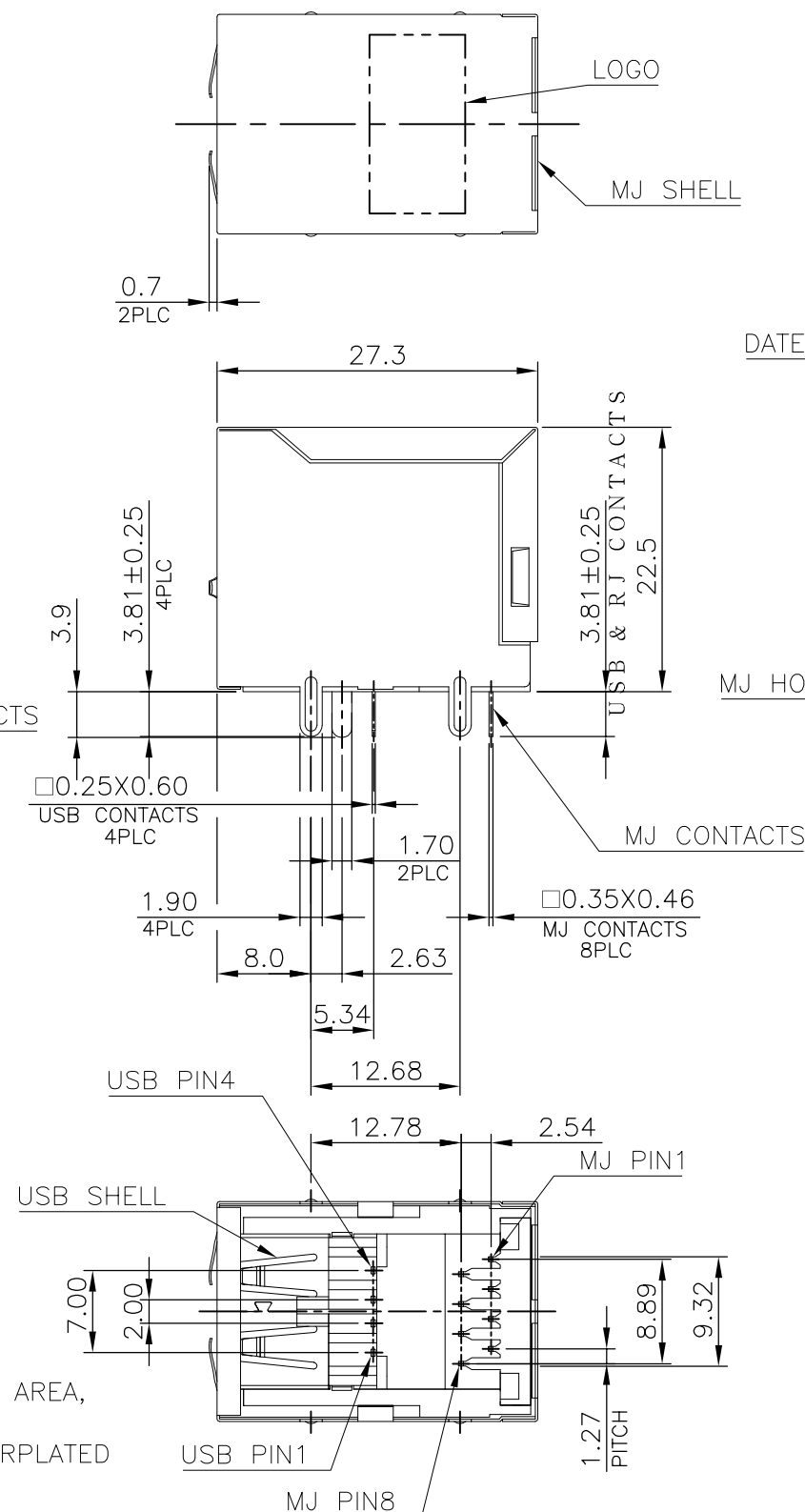
1.5 USB CONTACTS: BRASS.

1.6 USB SHELL: SPCC.

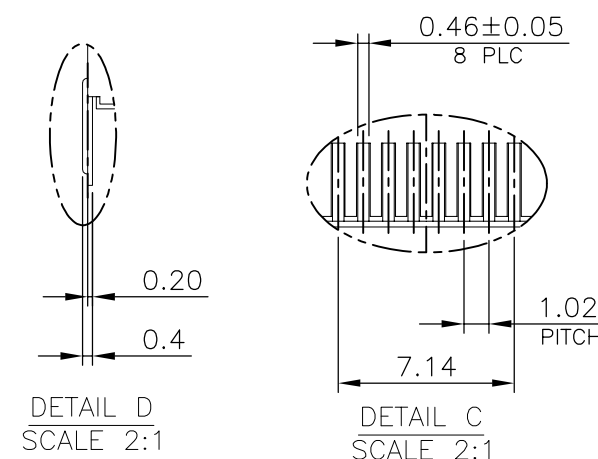
## 2. FINISH:

2.1 MJ CONTACTS: GOLD FLASH PLATED ON CONTACT AREA,  
GOLD FLASH ON SOLDER TAIL,  
1.27 $\mu$ m [50u"] MIN. NICKEL UNDERPLATED  
OVERALL.2.2 MJ SHELL: 0.508 $\mu$ m [20u"] MIN. NICKEL PLATED.2.3 USB CONTACTS: 0.762 $\mu$ m [30u"] MIN. GOLD PLATED ON CONTACT AREA,  
2.54 $\mu$ m [100u"] MIN. BRIGHT TIN PLATED ON SOLDER TAIL,  
1.27 $\mu$ m [50u"] MIN. NICKEL UNDERPLATED OVERALL.2.4 USB SHELL: 2.032 $\mu$ m [80u"] MIN. NICKEL PLATED.

## 3. REFLOW SOLDER CAPABLE TO 260°C PER TE SPEC 109-201, CONDITION A.



## RECOMMENDED PCB LAYOUT

RECOMMENDED PCB THICKNESS: 3.0mm.  
TOLERANCE:  $\pm 0.05$  (TOP VIEW)DETAIL D  
SCALE 2:1DETAIL C  
SCALE 2:1

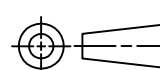
2-1909119-4

PART NUMBER

THIS DRAWING IS A CONTROLLED DOCUMENT.

DIMENSIONS:

mm



MATERIAL

SEE NOTE

TOLERANCES UNLESS  
OTHERWISE SPECIFIED:0 PLC  $\pm$  -  
1 PLC  $\pm 0.3$   
2 PLC  $\pm 0.2$   
3 PLC  $\pm 0.15$   
4 PLC  $\pm$  -  
ANGLES  $\pm 3^\circ$ 

FINISH

SEE NOTE

DWN

CHK

APVD

PRODUCT SPEC

APPLICATION SPEC

WEIGHT

13.06 GRAMS

CUSTOMER DRAWING



TE Connectivity

NAME

MODULAR JACK CONNECTOR OVER USB CONNECTOR  
STACKED, DIP TYPE

SIZE

CAGE CODE

DRAWING NO

RESTRICTED TO

A300779 C-1909119

SCALE

SHEET

4 OF 6

REV

C

4

3

2

1

THIS DRAWING IS UNPUBLISHED.

RELEASED FOR PUBLICATION

- . - .



COPYRIGHT 2011

BY TYCO ELECTRONICS CORPORATION.

ALL RIGHTS RESERVED.

LOC

DIST

REVISIONS

P

LTR

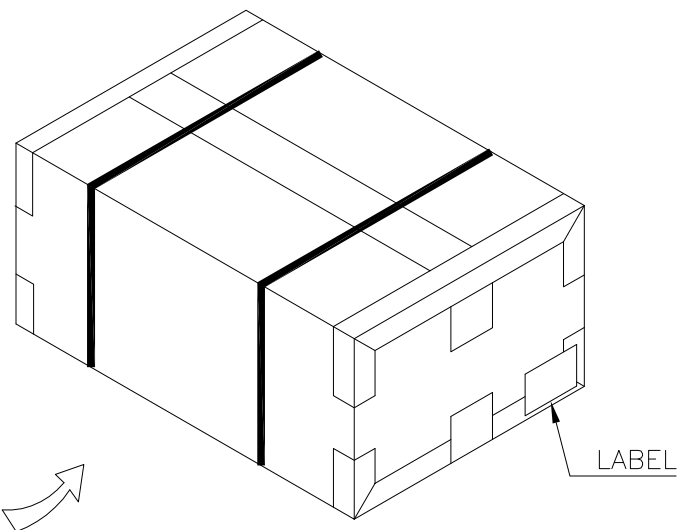
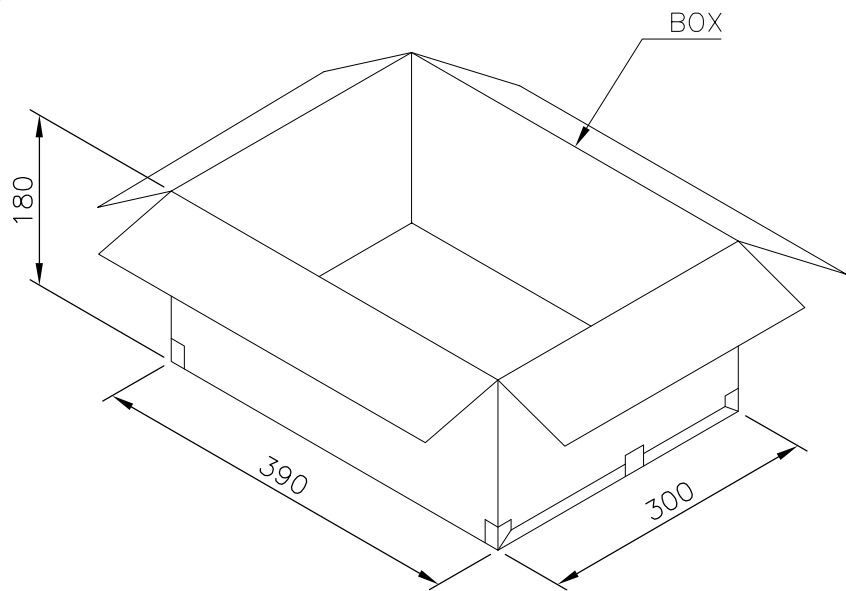
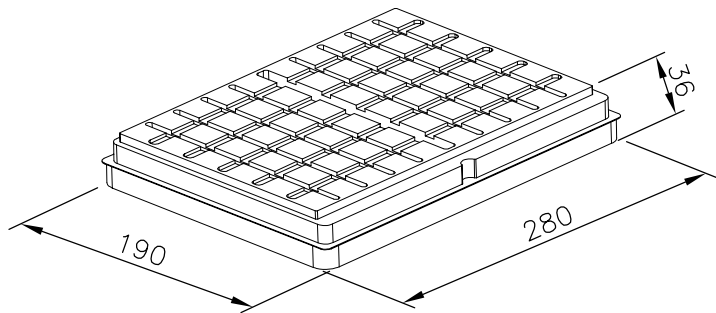
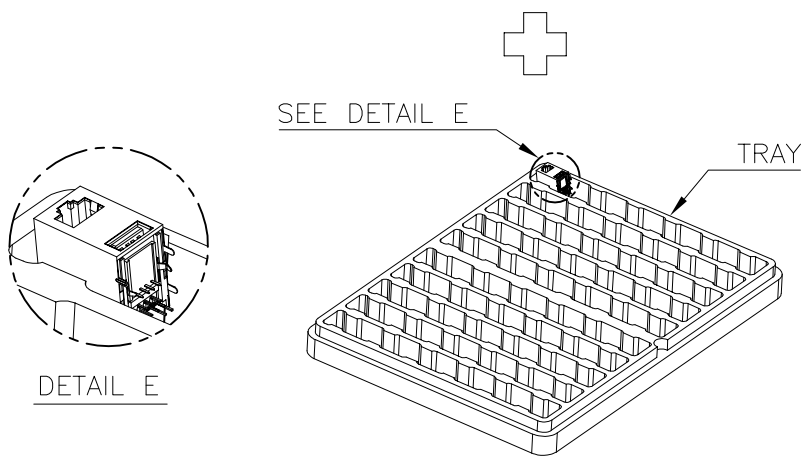
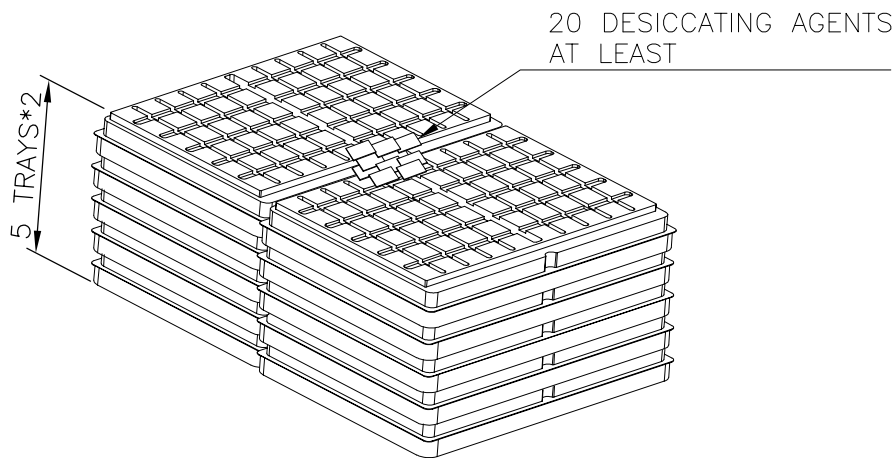
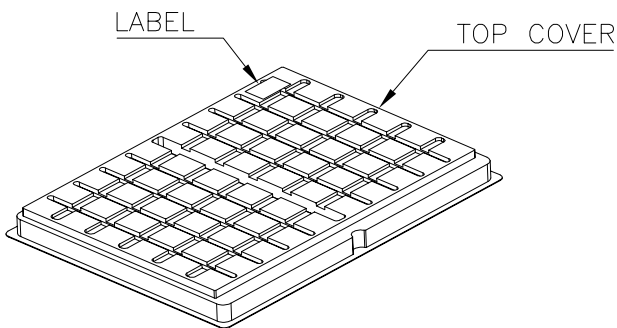
DESCRIPTION

DATE

DWN

APVD

SEE SHEET 1.



NOTE:

1. MATERIAL:

1.1 TRAY & TOP COVER: PET.

1.2 BOX: CORRUGATED PAPER.

2. EACH BAG SHALL BE INCLUDED:

\*DESICCANT

9.10KG	7.10KG	50	10	500	1909119-1
GROSS WEIGHT	NET WEIGHT	PCS/ TRAY	TRAY/ BOX	PCS/ BOX	PART NUMBER

THIS DRAWING IS A CONTROLLED DOCUMENT.

DWN

CHK

APVD

PRODUCT SPEC

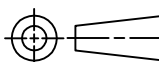
APPLICATION SPEC

WEIGHT

CUSTOMER DRAWING

DIMENSIONS:

mm



MATERIAL

TOLERANCES UNLESS OTHERWISE SPECIFIED:

0 PLC ±  
1 PLC ±0.3  
2 PLC ±0.2  
3 PLC ±0.15  
4 PLC ±  
ANGLES ±3°

FINISH



TE Connectivity

NAME

MODULAR JACK CONNECTOR OVER USB CONNECTOR STACKED, DIP TYPE

SIZE

CAGE CODE

DRAWING NO

RESTRICTED TO

A3

00779

C=1909119

SCALE

SHEET

5 OF 6

REV

C

4

3

2

1

THIS DRAWING IS UNPUBLISHED.

RELEASED FOR PUBLICATION

- . - .



COPYRIGHT 2011

BY TYCO ELECTRONICS CORPORATION.

ALL RIGHTS RESERVED.

LOC

DIST

REVISIONS

P

LTR

DESCRIPTION

DATE

DWN

APVD

SEE SHEET 1.

LABEL

TOP COVER

20 DESICCATING AGENTS  
AT LEAST

5 TRAYS\*2

SEE DETAIL E

TRAY

BOX

LABEL

DETAIL E

180

390

300

190

280

36

8.60 KG	6.55 KG	50	10	500	2-1909119-4
8.60 KG	6.55 KG	50	10	500	1-1909119-4
8.00 KG	6.05 KG	50	10	500	1909119-4
GROSS WEIGHT	NET WEIGHT	PCS/ TRAY	TRAY/ BOX	PCS/ BOX	PART NUMBER

NOTE:

1. MATERIAL:

1.1 TRAY & TOP COVER: PET.

1.2 BOX: CORRUGATED PAPER.

2. EACH BAG SHALL BE INCLUDED:

\*DESICCANT

THIS DRAWING IS A CONTROLLED DOCUMENT.

DWN

CHK

APVD

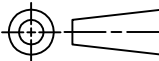
PRODUCT SPEC

APPLICATION SPEC

WEIGHT

CUSTOMER DRAWING

DIMENSIONS:  
mm



MATERIAL

TOLERANCES UNLESS  
OTHERWISE SPECIFIED:

0 PLC ± -  
1 PLC ± 0.3  
2 PLC ± 0.2  
3 PLC ± 0.15  
4 PLC ± -  
ANGLES ± 3°  
FINISH



TE Connectivity

NAME

MODULAR JACK CONNECTOR OVER USB CONNECTOR  
STACKED, DIP TYPE

SIZE

CAGE CODE

DRAWING NO

RESTRICTED TO

A3

00779

C-1909119

SCALE

SHEET

6 OF 6

REV

C

# Mouser Electronics

Authorized Distributor

Click to View Pricing, Inventory, Delivery & Lifecycle Information:

[TE Connectivity:](#)

[1909119-1](#)