

4

3

2

1

|   |              |       |           |      |     |      |      |                          |      |      |     |    |      |      |    |   |                |              |               |                          |             |  |  |  |  |  |  |  |  |  |  |
|---|--------------|-------|-----------|------|-----|------|------|--------------------------|------|------|-----|----|------|------|----|---|----------------|--------------|---------------|--------------------------|-------------|--|--|--|--|--|--|--|--|--|--|
| THIS DRAWING IS UNPUBLISHED.                              |              |       |           |      |     |      |      | RELEASED FOR PUBLICATION |      |      |     |    |      |      |    | SEP ,2005.                                  |                |              |               |                          |             |  |  |  |  |  |  |  |  |  |  |
| © COPYRIGHT 2005 By -                                     |              |       |           |      |     |      |      | ALL RIGHTS RESERVED.     |      |      |     |    |      |      |    |   |                |              |               |                          |             |  |  |  |  |  |  |  |  |  |  |
| 1 CONTACT COPLANALITY IS 0.1 MAX.                         |              |       |           |      |     |      |      |                          |      |      |     |    |      |      |    | 1 コンタクトコプラナリティーは 0.1 以下。                    |                |              |               |                          |             |  |  |  |  |  |  |  |  |  |  |
| 2 THIS DIMENSION MEANS CENTER OF THE POCKET.              |              |       |           |      |     |      |      |                          |      |      |     |    |      |      |    | 2 本寸法はポケットの中心を表す。                           |                |              |               |                          |             |  |  |  |  |  |  |  |  |  |  |
| 3 M3 TAPPING + BVTP RECOMMENDED TORQUE: 68.6N (7Kgf) MAX. |              |       |           |      |     |      |      |                          |      |      |     |    |      |      |    | 3 M3 TAPPING + BVTP 推奨トルク: 68.6N (7Kgf) 以下。 |                |              |               |                          |             |  |  |  |  |  |  |  |  |  |  |
| 4 FINISH  |              |       |           |      |     |      |      |                          |      |      |     |    |      |      |    | 4 仕上  |                |              |               |                          |             |  |  |  |  |  |  |  |  |  |  |
| CONTACT: V μm MIN. Au PL. ON CONTACT AREA (V: SEE TABLE)  |              |       |           |      |     |      |      |                          |      |      |     |    |      |      |    | コンタクト: コンタクトエリアに V μm 以上の 金めっき (V: 表参照)     |                |              |               |                          |             |  |  |  |  |  |  |  |  |  |  |
| 0.03~0.1 μm Au PL. ON TERMINAL AREA                       |              |       |           |      |     |      |      |                          |      |      |     |    |      |      |    | ターミナルエリアに 0.03~0.1 μm の金めっき                 |                |              |               |                          |             |  |  |  |  |  |  |  |  |  |  |
| Ni UNDER PL. ALL OVER                                     |              |       |           |      |     |      |      |                          |      |      |     |    |      |      |    | ニッケル下地めっきを施す                                |                |              |               |                          |             |  |  |  |  |  |  |  |  |  |  |
| SHELL: Sn PL. (MATTE) ALL OVER                            |              |       |           |      |     |      |      |                          |      |      |     |    |      |      |    | シェル: すずめっき (つや消し)                           |                |              |               |                          |             |  |  |  |  |  |  |  |  |  |  |
| Ni UNDER PL. ALL OVER                                     |              |       |           |      |     |      |      |                          |      |      |     |    |      |      |    | ニッケル下地めっきを施す                                |                |              |               |                          |             |  |  |  |  |  |  |  |  |  |  |
| 5 SCREW SIZE  |              |       |           |      |     |      |      |                          |      |      |     |    |      |      |    | 5 スクリューサイズ                                  |                |              |               |                          |             |  |  |  |  |  |  |  |  |  |  |
| 6 QTY PRINT ON THE LABEL. (EMBOSS PACKING)                |              |       |           |      |     |      |      |                          |      |      |     |    |      |      |    | 6 数量はラベルに印字される (EMBOSS 梱包)                  |                |              |               |                          |             |  |  |  |  |  |  |  |  |  |  |
|   |              |       |           |      |     |      |      |                          |      |      |     |    |      |      |    |   |                |              |               |                          |             |  |  |  |  |  |  |  |  |  |  |
| 0.3   | —            | 6 70  | 1.9       | —    | —   | —    | —    | 33.5                     | 37.5 | 9.32 | 0.4 | 32 | 28.4 | 14.2 | 16 | WITHOUT TAPE                                | WITHOUT FLANGE | THROUGH HOLE | (SEE SHEET 2) | SOFT TRAY (SEE SHEET 11) | 6—1903015—3 |  |  |  |  |  |  |  |  |  |  |
| 0.76  | M3 x 0.5     | 70    | 1.9       | 46   | 138 | 6—23 | 46   | —                        | —    | —    | —   | —  | —    | —    | —  | WITH TAPE                                   | WITH FLANGE    | THROUGH HOLE | (SEE SHEET 3) | SOFT TRAY (SEE SHEET 7)  | 9—1903015—4 |  |  |  |  |  |  |  |  |  |  |
| —0.3  | M3 x 0.5     | 6 200 | 1.9       | —    | —   | —    | —    | 45.5                     | 49.5 | 18.3 | 0.5 | 44 | 40.4 | 20.2 | 20 | WITH TAPE                                   | WITH FLANGE    | THROUGH HOLE | (SEE SHEET 3) | EMBOSS (SEE SHEET 6)     | 9—1903015—3 |  |  |  |  |  |  |  |  |  |  |
| 0.3   | M3 x 0.5     | 70    | 1.9       | —    | —   | —    | —    | —                        | —    | —    | —   | —  | —    | —    | —  | WITHOUT TAPE                                | WITH FLANGE    | THROUGH HOLE | (SEE SHEET 3) | SOFT TRAY (SEE SHEET 10) | 8—1903015—4 |  |  |  |  |  |  |  |  |  |  |
| —0.1  | —            | 6 550 | 1.9       | —    | —   | —    | —    | 33.5                     | 37.5 | 9.32 | 0.4 | 32 | 28.4 | 14.2 | 16 | WITHOUT TAPE                                | WITHOUT FLANGE | THROUGH HOLE | (SEE SHEET 2) | EMBOSS (SEE SHEET 6)     | 7—1903015—1 |  |  |  |  |  |  |  |  |  |  |
| —0.3  | M3 x 0.5     | 6 200 | 1.9       | —    | —   | —    | —    | 45.5                     | 49.5 | 18.3 | 0.5 | 44 | 40.4 | 20.2 | 20 | WITHOUT TAPE                                | WITH FLANGE    | FULL SMT     | (SEE SHEET 5) | EMBOSS (SEE SHEET 6)     | 5—1903015—9 |  |  |  |  |  |  |  |  |  |  |
| 0.3   | —            | 6 550 | 0.8       | —    | —   | —    | —    | 33.5                     | 37.5 | 9.32 | 0.4 | 32 | 28.4 | 14.2 | 16 | WITHOUT TAPE                                | WITHOUT FLANGE | THROUGH HOLE | (SEE SHEET 3) | EMBOSS (SEE SHEET 6)     | 5—1903015—5 |  |  |  |  |  |  |  |  |  |  |
| 0.3   | M3 x 0.5     | 70    | 1.9       | 46   | 138 | 6—23 | 46   | —                        | —    | —    | —   | —  | —    | —    | —  | WITHOUT TAPE                                | WITH FLANGE    | THROUGH HOLE | (SEE SHEET 3) | SOFT TRAY (SEE SHEET 7)  | 5—1903015—4 |  |  |  |  |  |  |  |  |  |  |
| —0.3  | M3 x 0.5     | 6 200 | 1.9       | —    | —   | —    | —    | 45.5                     | 49.5 | 18.3 | 0.5 | 44 | 40.4 | 20.2 | 20 | WITHOUT TAPE                                | WITH FLANGE    | THROUGH HOLE | (SEE SHEET 3) | EMBOSS (SEE SHEET 6)     | 5—1903015—3 |  |  |  |  |  |  |  |  |  |  |
| —0.3  | 3 ø2.65±0.3  | 70    | 1.9       | 46   | 138 | 6—23 | 46   | —                        | —    | —    | —   | —  | —    | —    | —  | WITHOUT TAPE                                | WITH FLANGE    | THROUGH HOLE | (SEE SHEET 3) | SOFT TRAY (SEE SHEET 7)  | 5—1903015—2 |  |  |  |  |  |  |  |  |  |  |
| 0.3   | —            | 6 400 | 1.9       | —    | —   | —    | —    | 33.5                     | 37.5 | 9.32 | 0.4 | 32 | 28.4 | 14.2 | 16 | WITHOUT TAPE                                | WITHOUT FLANGE | THROUGH HOLE | (SEE SHEET 2) | EMBOSS (SEE SHEET 6)     | 5—1903015—1 |  |  |  |  |  |  |  |  |  |  |
| —0.3  | M3 x 0.5     | 70    | 1.0       | 46   | 138 | 6—23 | 46   |                          |      |      |     |    |      |      |    | WITHOUT TAPE                                | WITH FLANGE    | THROUGH HOLE | (SEE SHEET 3) | SOFT TRAY (SEE SHEET 7)  | 4—1903015—1 |  |  |  |  |  |  |  |  |  |  |
| —0.76   | —            | 6 400 | 1.2       | —    | —   | —    | —    | 33.5                     | 37.5 | 9.32 | 0.4 | 32 | 28.4 | 14.2 | 16 | WITHOUT TAPE                                | WITHOUT FLANGE | THROUGH HOLE | (SEE SHEET 2) | EMBOSS (SEE SHEET 6)     | 2—1903015—2 |  |  |  |  |  |  |  |  |  |  |
| 0.76  | M3 x 0.5     | 70    | 1.9       | —    | —   | —    | —    | —                        | —    | —    | —   | —  | —    | —    | —  | WITHOUT TAPE                                | WITH FLANGE    | THROUGH HOLE | (SEE SHEET 3) | SOFT TRAY (SEE SHEET 9)  | 1903015—8   |  |  |  |  |  |  |  |  |  |  |
| 0.76  | 3 ø2.65±0.3  | 70    | 1.9       | —    | —   | —    | —    | —                        | —    | —    | —   | —  | —    | —    | —  | WITHOUT TAPE                                | WITH FLANGE    | THROUGH HOLE | (SEE SHEET 3) | SOFT TRAY (SEE SHEET 9)  | 1903015—7   |  |  |  |  |  |  |  |  |  |  |
| —0.76   | M3 x 0.5     | 50    | 1.9       | 54.4 | 120 | 4—30 | 54.4 |                          |      |      |     |    |      |      |    | WITHOUT TAPE                                | WITH FLANGE    | THROUGH HOLE | (SEE SHEET 3) | SOFT TRAY (SEE SHEET 9)  | 1903015—5   |  |  |  |  |  |  |  |  |  |  |
| —0.76   | M3 x 0.5     | 70    | 1.9       | 46   | 138 | 6—23 | 46   |                          |      |      |     |    |      |      |    | WITHOUT TAPE                                | WITH FLANGE    | THROUGH HOLE | (SEE SHEET 4) | SOFT TRAY (SEE SHEET 8)  | 1903015—4   |  |  |  |  |  |  |  |  |  |  |
| —0.76   | M3 x 0.5     | 6 200 | 1.9       | —    | —   | —    | —    | 45.5                     | 49.5 | 18.3 | 0.5 | 44 | 40.4 | 20.2 | 20 | WITHOUT TAPE                                | WITH FLANGE    | THROUGH HOLE | (SEE SHEET 4) | EMBOSS (SEE SHEET 6)     | 1903015—3   |  |  |  |  |  |  |  |  |  |  |
| —0.76   | 3 ø2.65±0.3  | 70    | 1.9       | 46   | 138 | 6—23 | 46   | —                        | —    | —    | —   | —  | —    | —    | —  | WITHOUT TAPE                                | WITH FLANGE    | THROUGH HOLE | (SEE SHEET 3) | SOFT TRAY (SEE SHEET 7)  | 1903015—2   |  |  |  |  |  |  |  |  |  |  |
| —0.76   | —            | 6 400 | 1.9       | —    | —   | —    | —    | 33.5                     | 37.5 | 9.32 | 0.4 | 32 | 28.4 | 14.2 | 16 | WITHOUT TAPE                                | WITHOUT FLANGE | THROUGH HOLE | (SEE SHEET 2) | EMBOSS (SEE SHEET 6)     | 1903015—1   |  |  |  |  |  |  |  |  |  |  |
| V   | U            | T     | AA        | S    | R   | P    | N    | M                        | L    | K    | J   | H  | G    | F    | E  | POLYIMIDE TAPE                              | FLANGE         | SHELL TYPE   | CONNECTOR     | PACKING                  | PART NUMBER |  |  |  |  |  |  |  |  |  |  |
| 4 Au PL.  | 5 SCREW SIZE | QTY   | DIMENSION |      |     |      |      |                          |      |      |     |    |      |      |    | PART LIST                                   |                |              |               |                          |             |  |  |  |  |  |  |  |  |  |  |

A

THIS DRAWING IS A CONTROLLED DOCUMENT.

DIMENSIONS:  
単位: 耗  
mm

MATERIAL  
材料

TOLERANCES UNLESS  
OTHERWISE SPECIFIED:  
一般公差

0 PLC ±

1 PLC ±

2 PLC ±

3 PLC ±

4 PLC ±

ANGLES ±

FINISH  
仕上

DWN  
R.MURAYAMA  
26SEP2005

CHK  
T.KIMURA  
26SEP2005

APVD  
T.KIMURA  
26SEP2005

PRODUCT SPEC  
製品規格  
108—78180—2

APPLICATION SPEC  
取付適用規格

WEIGHT

CUSTOMER DRAWING

TE Connectivity

NAME  
名称  
HDMI 19 POS RECEPTACLE ASSY  
SMT SHORT TYPE

SIZE  
A3

CAGE CODE  
00779

DRAWING NO  
番号  
C=1903015

RESTRICTED TO  
—

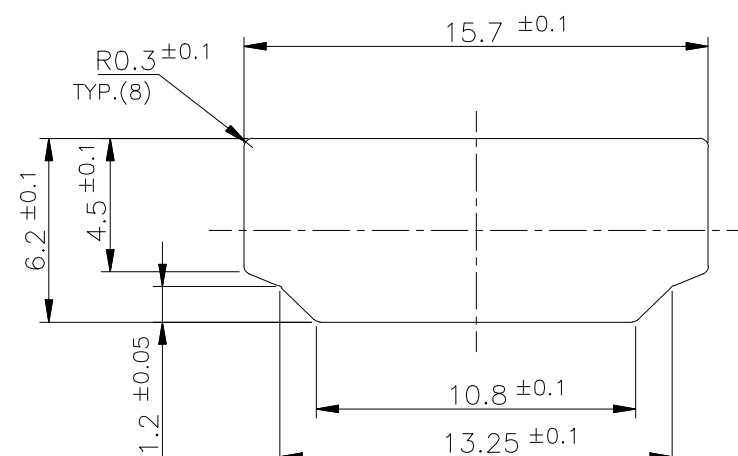
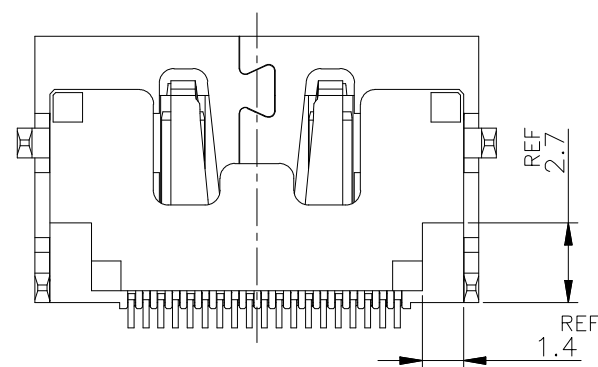
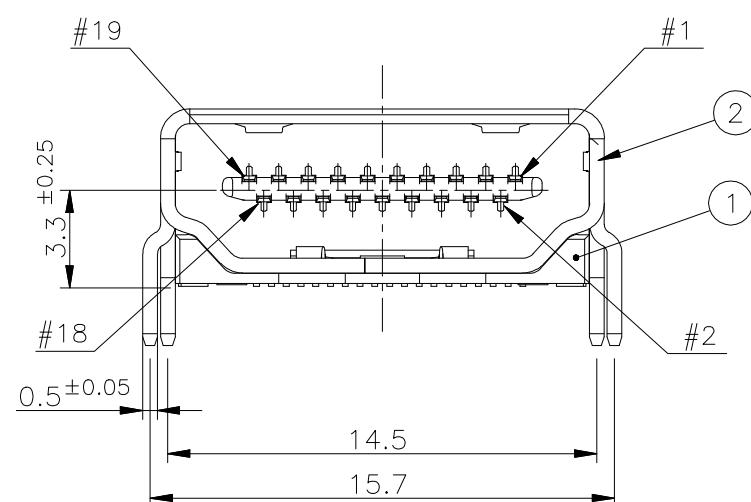
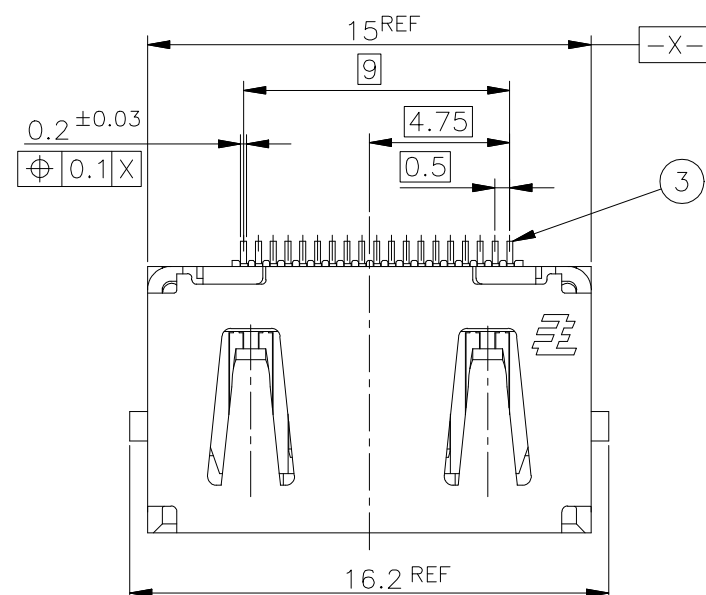
SCALE  
尺度  
4:1

SHEET  
1 OF 12

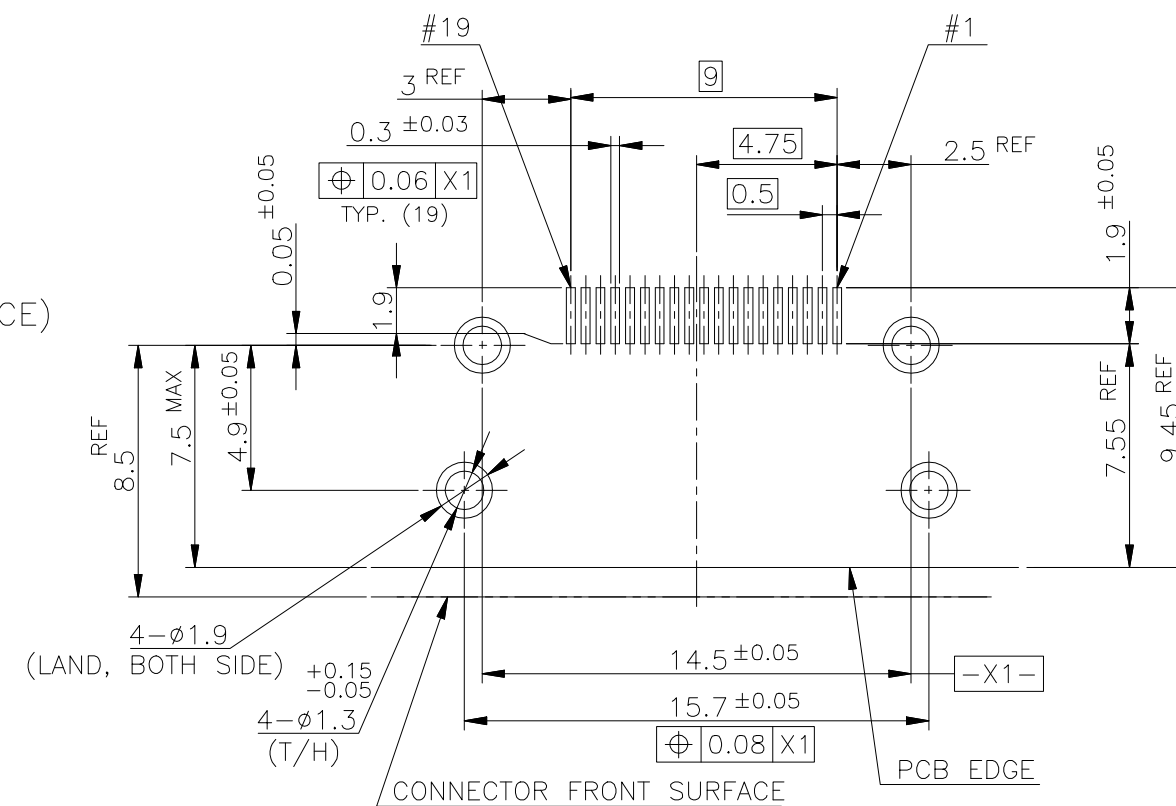
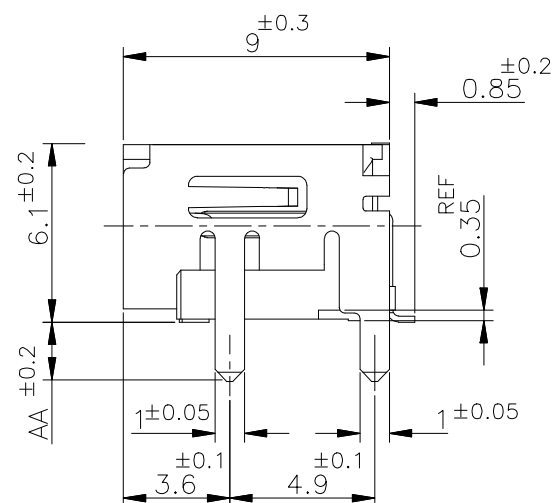
REV  
S3

1470—19 (3/11)

| LOC<br>— | DIST<br>— | REVISIONS<br>變更 |     |             |      |     |      |
|----------|-----------|-----------------|-----|-------------|------|-----|------|
|          |           | P               | LTR | DESCRIPTION | DATE | DWN | APVD |
|          |           |                 | —   | SEE SHEET 1 | —    | —   | —    |




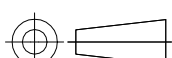
PANEL CUT OUT DIMENSION (REFERENCE)



P.C.B LAYOUT (REFERENCE)  
SHOWN AS CONNECTOR MOUNTING SIDE  
TOLERANCE: NON-CUMULATIVE

|  |             |      |
|--|-------------|------|
| BRASS                                    | CONTACT     | ③    |
| PHOSPHOR BRONZE                          | SHELL       | ②    |
| GLASS FILLED LCP UL94V-0,<br>BLACK COLOR | HOUSING     | ①    |
| MATERIAL                                 | DESCRIPTION | ITEM |

## CONNECTOR: WITHOUT FLANGE THROUGH HOLE TYPE

|   |  |                            |  |   |  |
|---|--|----------------------------|--|---|--|
| THIS DRAWING IS A CONTROLLED DOCUMENT.  |  | DWN                        |  |  TE Connectivity |  |
| DIMENSIONS:<br>単位: 耗<br>mm  |  | CHK                        |  |   |  |
| TOLERANCES UNLESS OTHERWISE SPECIFIED:<br>一般公差  |  | APVD                       |  | NAME<br>名称<br><br>HDMI 19 POS RECEPTACLE ASSY<br>SMT SHORT TYPE                                       |  |
|  |  | PRODUCT SPEC<br>製品規格       |  |   |  |
| 0 PLC ±<br>1 PLC ±<br>2 PLC ±<br>3 PLC ±<br>4 PLC ±<br>ANGLES ±<br>FINISH 仕上          |  | APPLICATION SPEC<br>取付適用規格 |  | SIZE<br>A3  |  |
| MATERIAL<br>材料  |  | WEIGHT                     |  | CAGE CODE<br>00779  |  |
|   |  | CUSTOMER DRAWING           |  | DRAWING NO<br>番号<br>C-1903015   |  |
|   |  |                            |  | RESTRICTED<br>—   |  |
|   |  |                            |  | SCALE<br>尺度<br>4:1  |  |
|   |  |                            |  | SHEET<br>2 OF 12  |  |
|   |  |                            |  | REV<br>S3   |  |

4

3

2

1

THIS DRAWING IS UNPUBLISHED.

RELEASED FOR PUBLICATION

SEP ,2005.



COPYRIGHT 2005 By --

ALL RIGHTS RESERVED.

LOC

DIST

REVISIONS

变更

DESCRIPTION

DATE

DWN

APVD

P

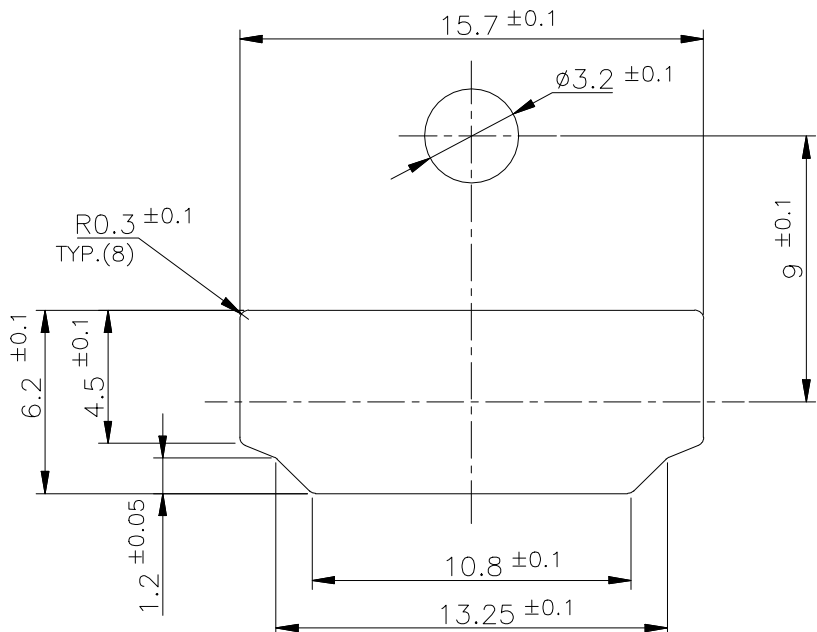
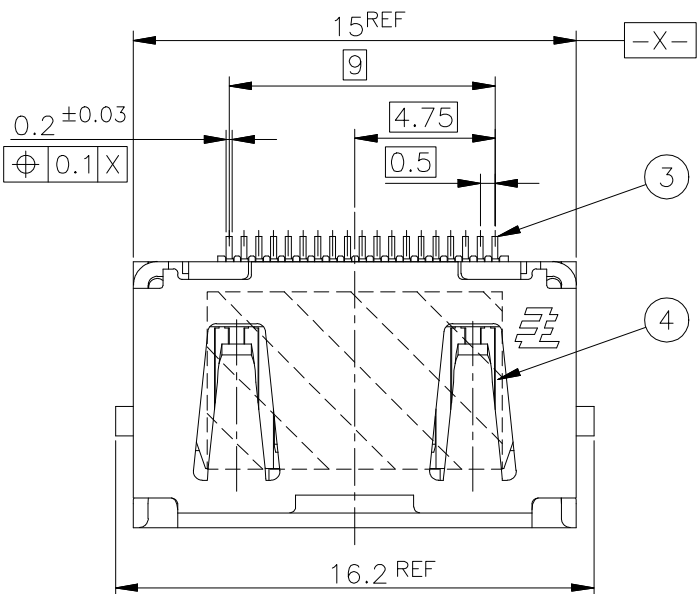
LTR

SEE SHEET 1

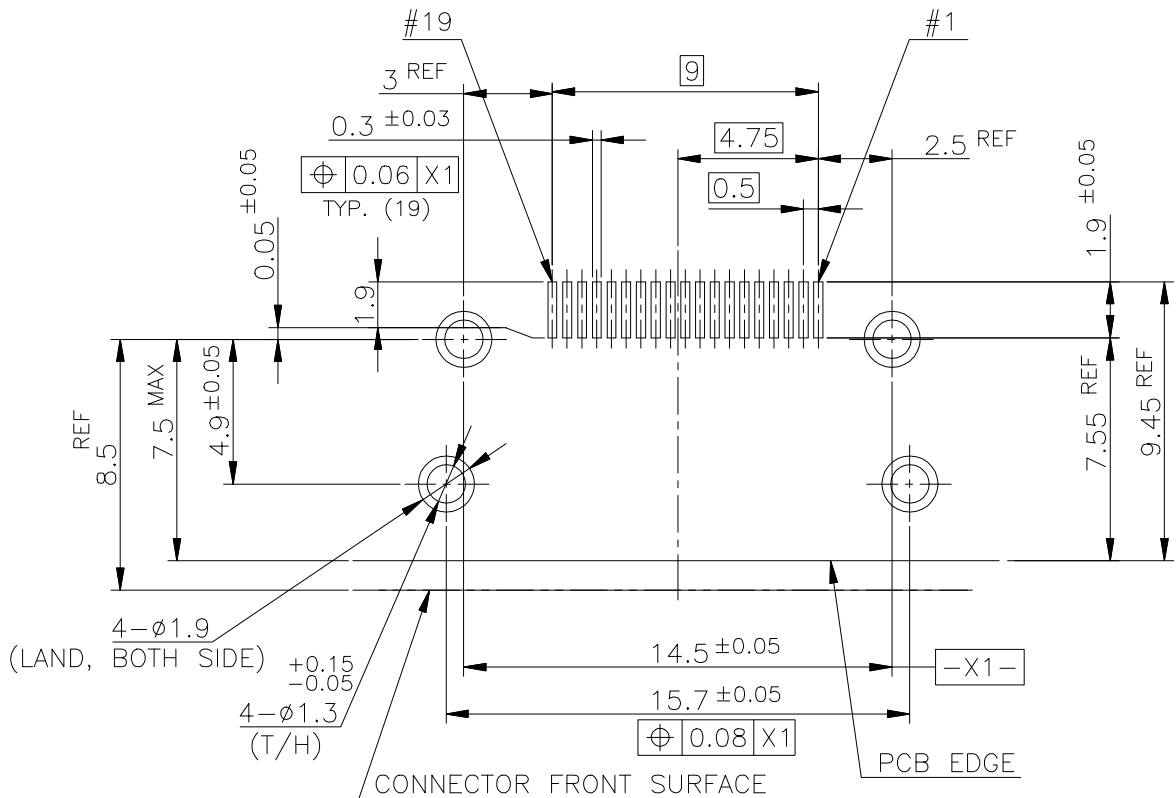
--

--

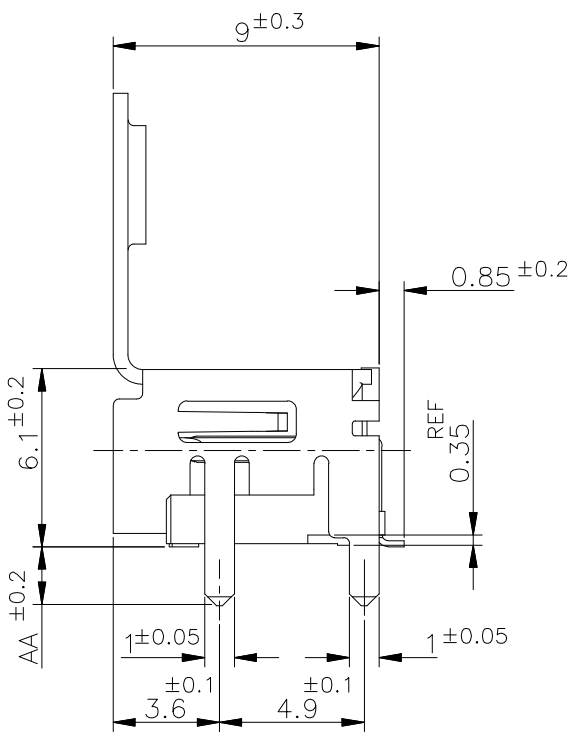
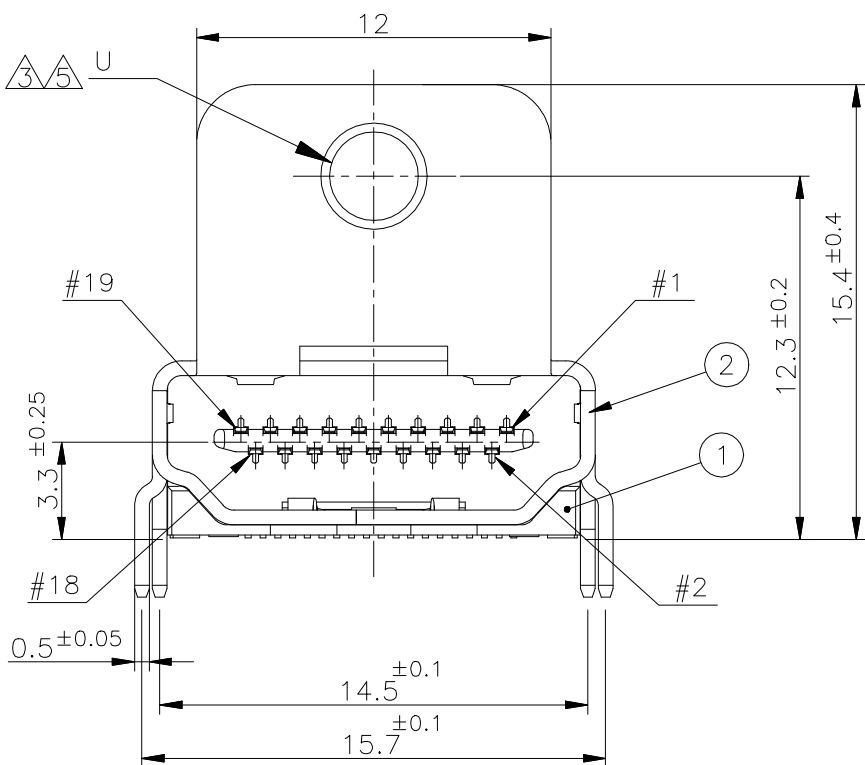
--



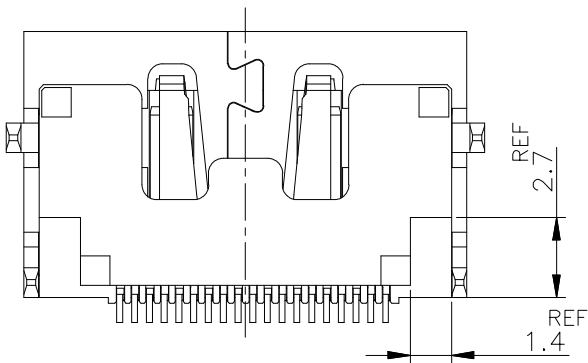
PANEL CUT OUT DIMENSION (REFERENCE)



P.C.B LAYOUT (REFERENCE)  
SHOWN AS CONNECTOR MOUNTING SIDE  
TOLERANCE: NON-CUMULATIVE



CONNECTOR: WITH FLANGE THROUGH HOLE TYPE



THIS DRAWING IS A CONTROLLED DOCUMENT.

DIMENSIONS:  
单位: 耗  
mm

TOLERANCES UNLESS  
OTHERWISE SPECIFIED:  
一般公差

0 PLC  
1 PLC  
2 PLC  
3 PLC  
4 PLC  
ANGLES  
FINISH  
仕上

MATERIAL  
材料

DWN

CHK

APVD

PRODUCT SPEC  
製品规格

APPLICATION SPEC  
取付適用规格

WEIGHT

CUSTOMER DRAWING



TE Connectivity

HDMI 19 POS RECEPTACLE ASSY  
SMT SHORT TYPE

SIZE

CAGE CODE

DRAWING NO  
番号

RESTRICTED TO

A300779

C=1903015

SCALE  
尺度 4:1

SHEET  
3 of 12

REV  
S3

4

3

2

1

THIS DRAWING IS UNPUBLISHED.

RELEASED FOR PUBLICATION

SEP ,2005.

© COPYRIGHT 2005 By -

ALL RIGHTS RESERVED.

LOC

DIST

REVISIONS

变更

DESCRIPTION

DATE

DWN

APVD

P

LTR

SEE SHEET 1

-

-

-

D

D

C

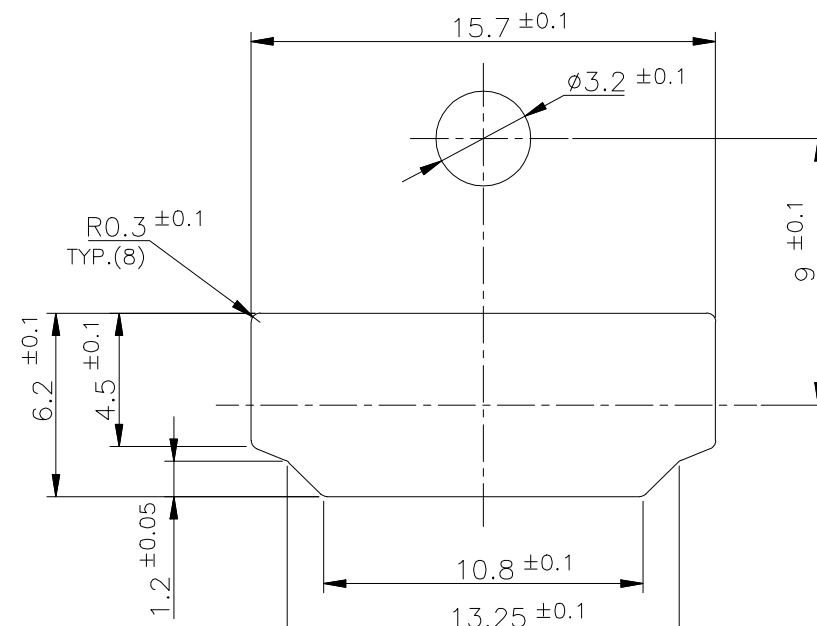
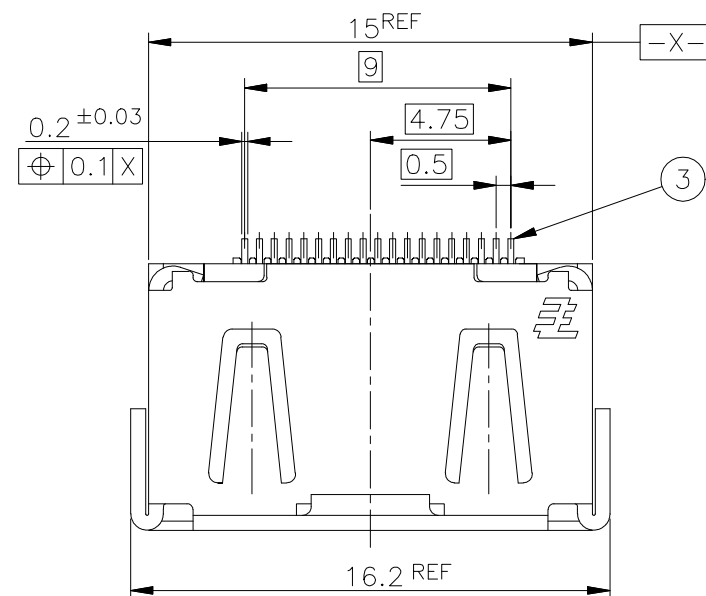
C

B

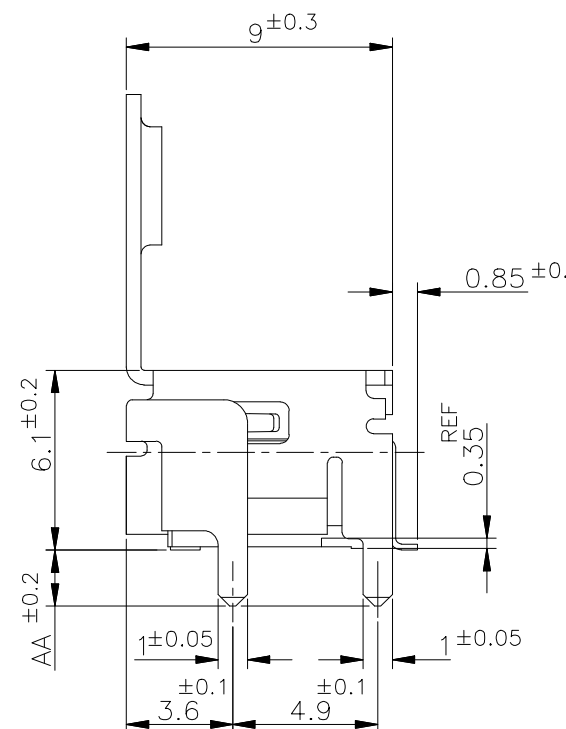
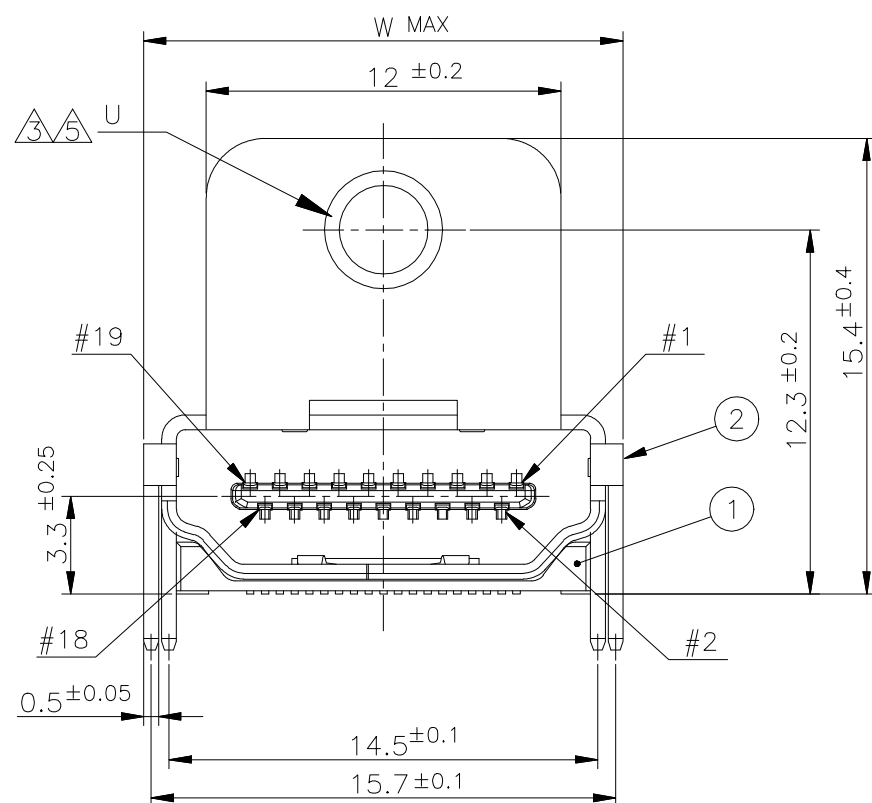
B

A

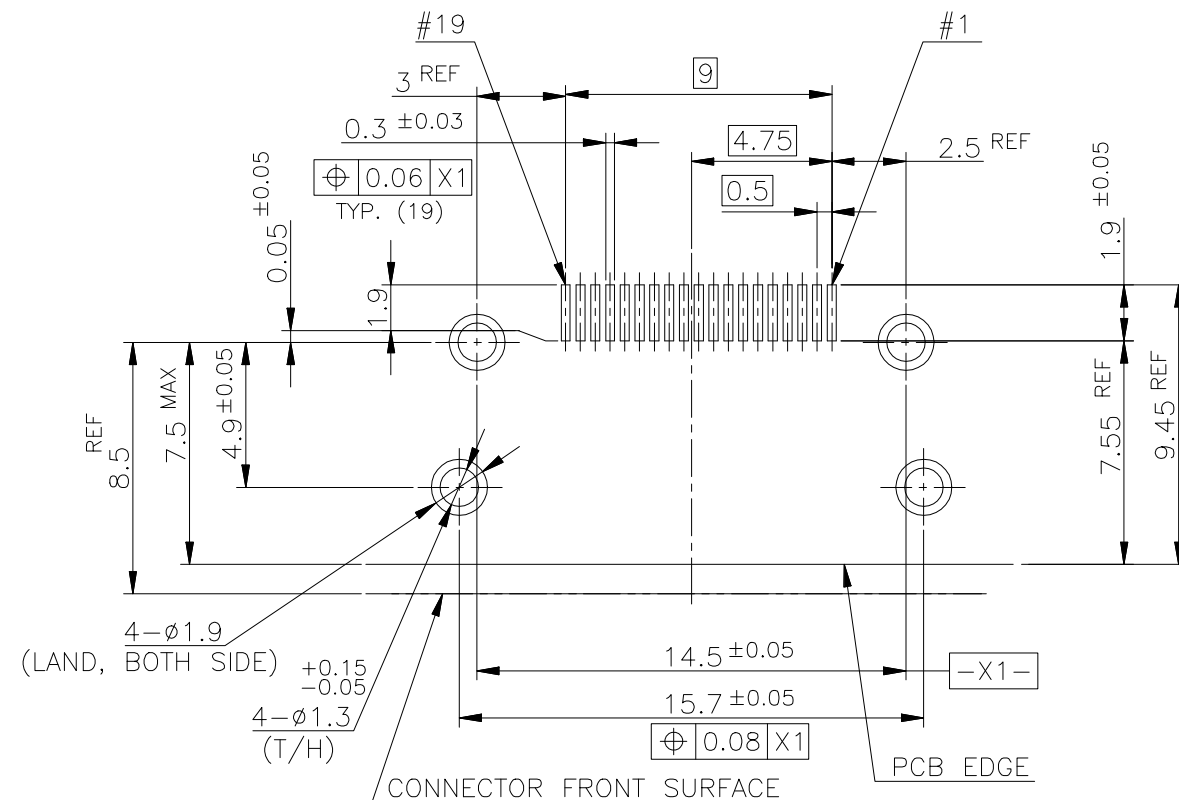
A



PANEL CUT OUT DIMENSION (REFERENCE)

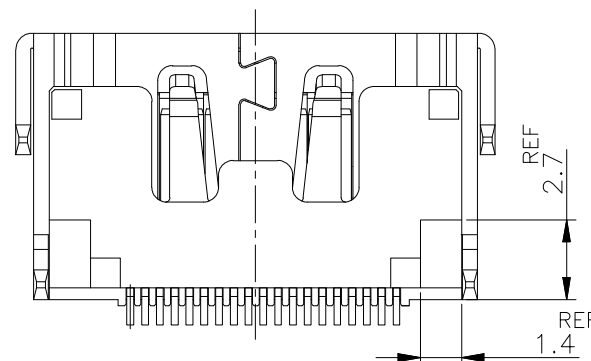


CONNECTOR: WITH FLANGE THROUGH HOLE TYPE



P.C.B LAYOUT (REFERENCE)  
SHOWN AS CONNECTOR MOUNTING SIDE  
TOLERANCE: NON-CUMULATIVE

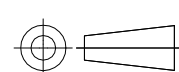
|                                       |             |      |
|---------------------------------------|-------------|------|
| POLYIMIDE                             | TAPE        | 4    |
| BRASS                                 | CONTACT     | 3    |
| PHOSPHOR BRONZE                       | SHELL       | 2    |
| GLASS FILLED LCP UL94V-0, BLACK COLOR | HOUSING     | 1    |
| MATERIAL                              | DESCRIPTION | ITEM |



THIS DRAWING IS A CONTROLLED DOCUMENT.

DIMENSIONS:  
单位: 毫米

TOLERANCES UNLESS  
OTHERWISE SPECIFIED:  
一般公差



MATERIAL  
材料

0 PLC  
1 PLC  
2 PLC  
3 PLC  
4 PLC  
ANGLES  
FINISH  
仕上

DWN

CHK

APVD

PRODUCT SPEC  
製品規格

APPLICATION SPEC  
取付適用規格

WEIGHT

CUSTOMER DRAWING



TE Connectivity

HDMI 19 POS RECEPTACLE ASSY  
SMT SHORT TYPE

SIZE

CAGE CODE

DRAWING NO

番号  
A300779C-1903015

RESTRICTED TO

SCALE  
尺度 4:1

SHEET  
4 OF 12

REV  
S3



4

3

2

1

THIS DRAWING IS UNPUBLISHED.

RELEASED FOR PUBLICATION

SEP ,2005.

© COPYRIGHT 2005 By -

ALL RIGHTS RESERVED.

1903015-1, 2-1903015-2, 5-1903015-1  
5-1903015-5, 7-1903015-1; AS SHOWN

LOC

DIST

REVISIONS

變更

DESCRIPTION

DATE

DWN

APVD

P

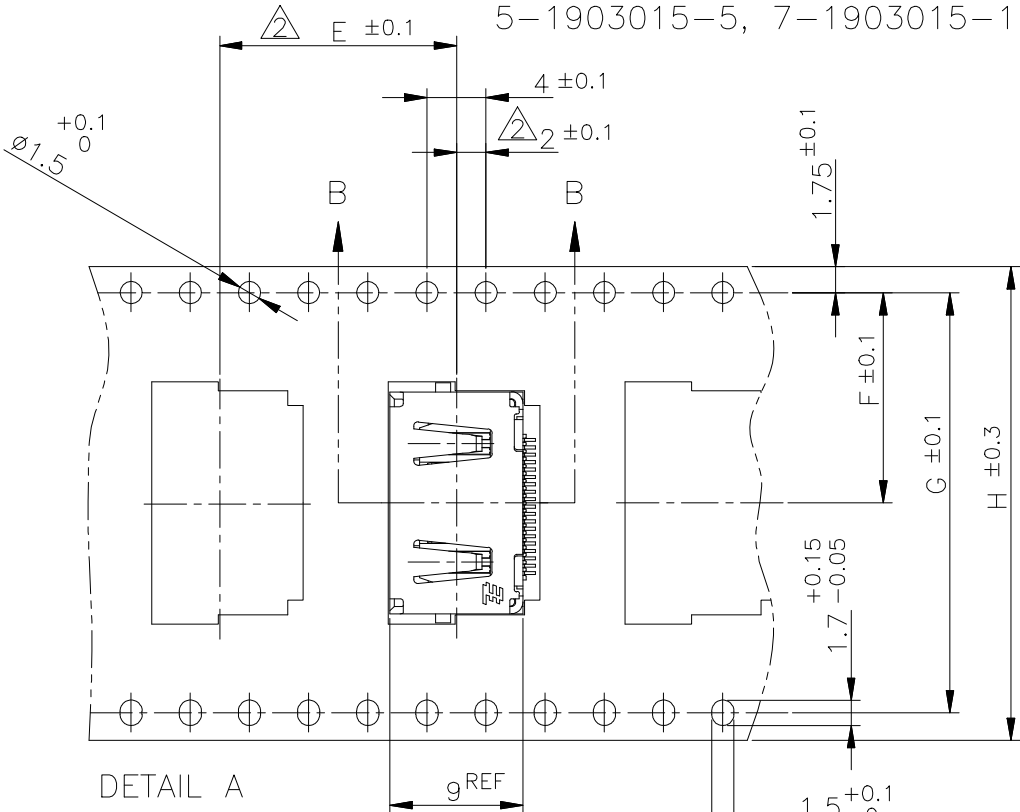
LTR

SEE SHEET 1

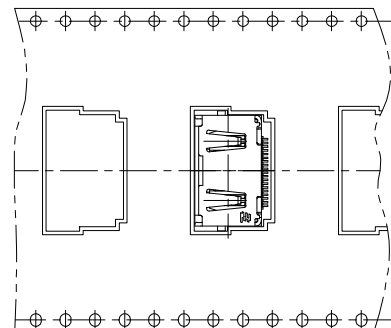
-

-

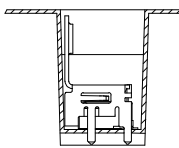
-



5-1903015-3; AS SHOWN  
(SCALE 1:1)

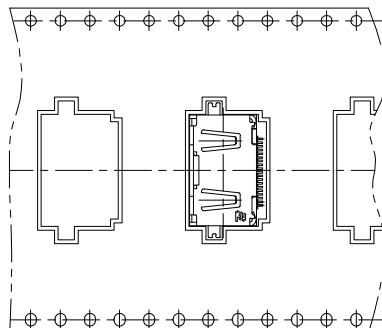


DETAIL A

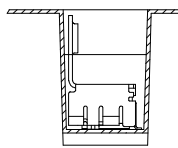


B-B

5-1903015-9; AS SHOWN  
(SCALE 1:1)

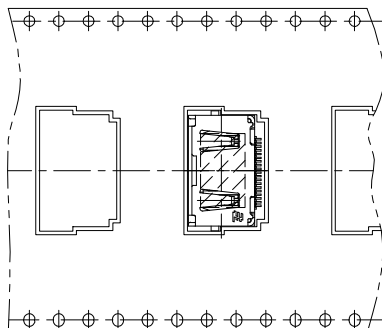


DETAIL A

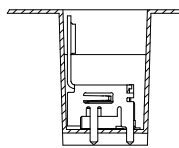


B-B

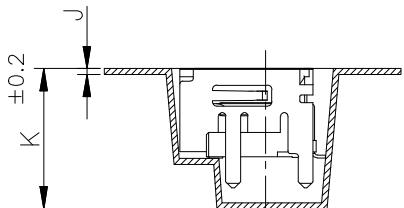
9-1903015-3; AS SHOWN  
(SCALE 1:1)



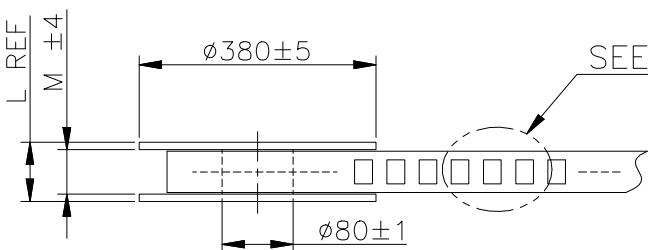
DETAIL A



B-B



B-B



SEE DETAIL A

WEEDING THE COVER TAPE: 300 MIN  
(NOT INCLUDE EMPTINESS POCKET)

PELLING ANGLE: 165°~180°  
PEELING STRENGTH:  
0.1~0.7N (300mm/min.)

PLASTIC REEL

PULL OUT DIRECTION

CARRIER TAPE

6  
LABEL

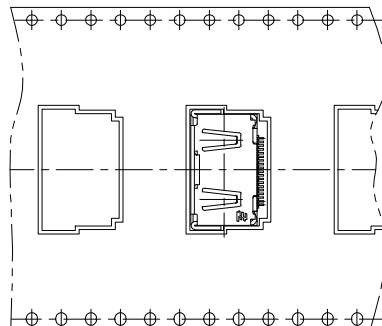
400 MIN. WITH PRODUCT CHARGE 25 HOLES MIN.  
QTY: T PCS

6

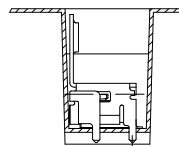
LABEL DESCRIPTION

TYCO P/N: \*-1903015-\*  
QTY: \* pcs  
D/C:  
MADE IN CHINA

1903015-3; AS SHOWN  
(SCALE 1:1)



DETAIL A



B-B

PET

COVER TAPE

PS

CARRIER TAPE

PLASTIC

REEL

MATERIAL

DESCRIPTION

THIS DRAWING IS A CONTROLLED DOCUMENT.

DIMENSIONS:  
單位: 耗  
mm

TOLERANCES UNLESS  
OTHERWISE SPECIFIED:  
一般公差

0 PLC ±  
1 PLC ±  
2 PLC ±  
3 PLC ±  
4 PLC ±  
ANGLES ±

FINISH  
仕上

MATERIAL  
材料

DWN

CHK

APVD

PRODUCT SPEC

製品規格

APPLICATION SPEC

取付適用規格

WEIGHT

CUSTOMER DRAWING

TE

TE Connectivity

HDMI 19 POS RECEPTACLE ASSY  
SMT SHORT TYPE

SIZE

CAGE CODE

DRAWING NO

番号

RESTRICTED TO

A3

00779

G-1903015

SCALE  
尺度 4:1

SHEET

6 OF 12

REV

S3



4

3

2

1

THIS DRAWING IS UNPUBLISHED.

RELEASED FOR PUBLICATION

SEP ,2005.

© COPYRIGHT 2005 By -

ALL RIGHTS RESERVED.

LOC

DIST

REVISIONS

变更

P

LTR

DESCRIPTION

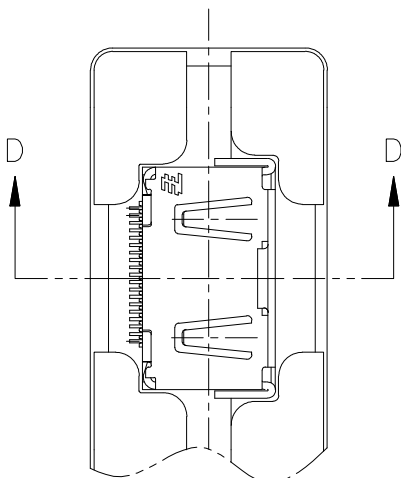
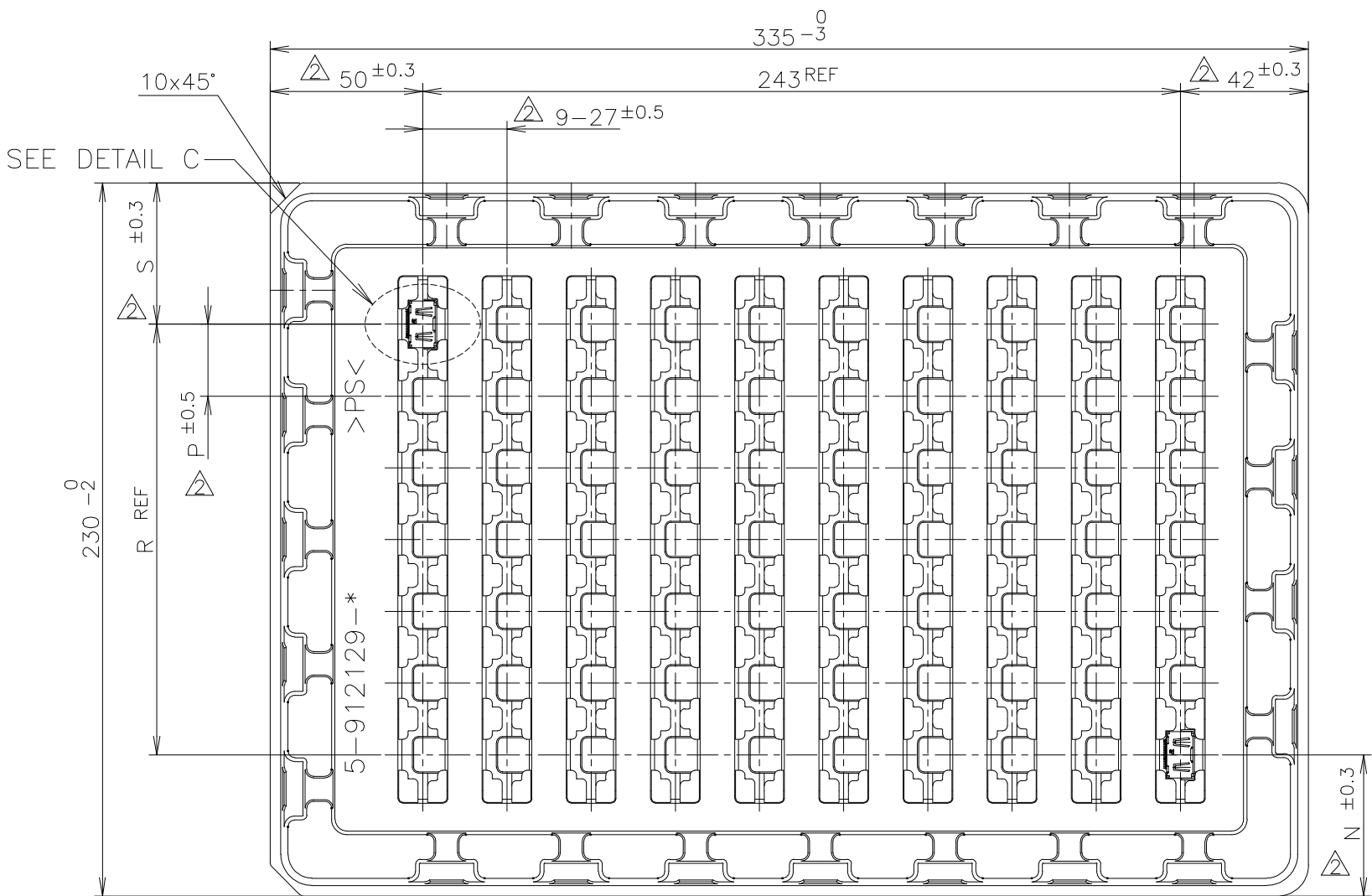
DATE

DWN

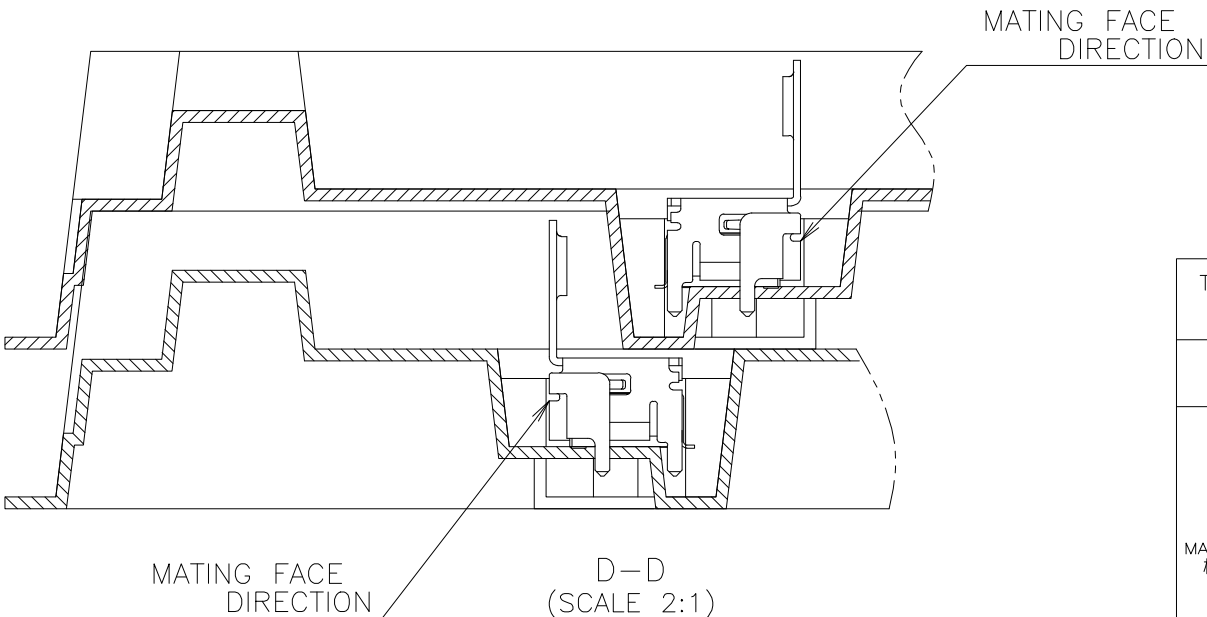
APVD

SEE SHEET 1

1903015-4; AS SHOWN



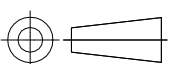
DETAIL C  
(SCALE 2:1)



THIS DRAWING IS A CONTROLLED DOCUMENT.

DIMENSIONS:  
单位: 耗  
mm

TOLERANCES UNLESS  
OTHERWISE SPECIFIED:  
一般公差



MATERIAL  
材料

0 PLC  
1 PLC  
2 PLC  
3 PLC  
4 PLC  
ANGLES  
FINISH  
仕上

±

DWN

CHK

APVD

PRODUCT SPEC  
製品規格

APPLICATION SPEC  
取付適用規格

WEIGHT

CUSTOMER DRAWING

NAME  
名称



TE Connectivity

HDMI 19 POS RECEPTACLE ASSY  
SMT SHORT TYPE

SIZE

CAGE CODE

DRAWING NO  
番号

A3

00779

C-1903015

RESTRICTED TO

-

SCALE  
尺度 4:1

SHEET  
8 of 12

REV  
S3



4

3

2

1

THIS DRAWING IS UNPUBLISHED.

RELEASED FOR PUBLICATION

SEP ,2005.

© COPYRIGHT 2005 By -

ALL RIGHTS RESERVED.

1903015-7, 1903015-8; AS SHOWN

LOC

DIST

REVISIONS

变更

P

LTR

DESCRIPTION

DATE

DWN

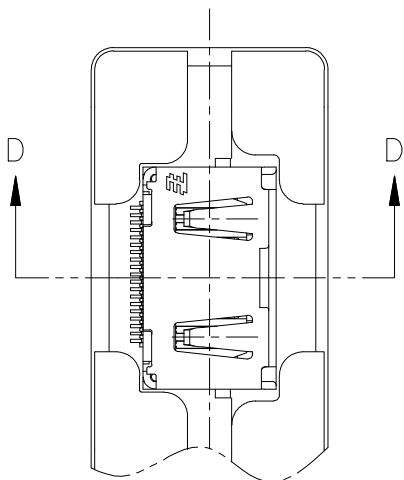
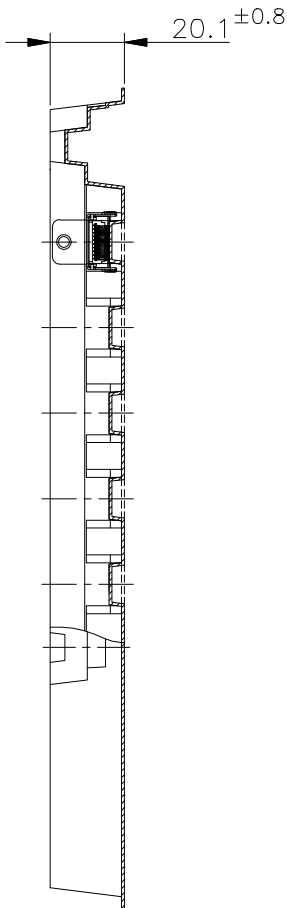
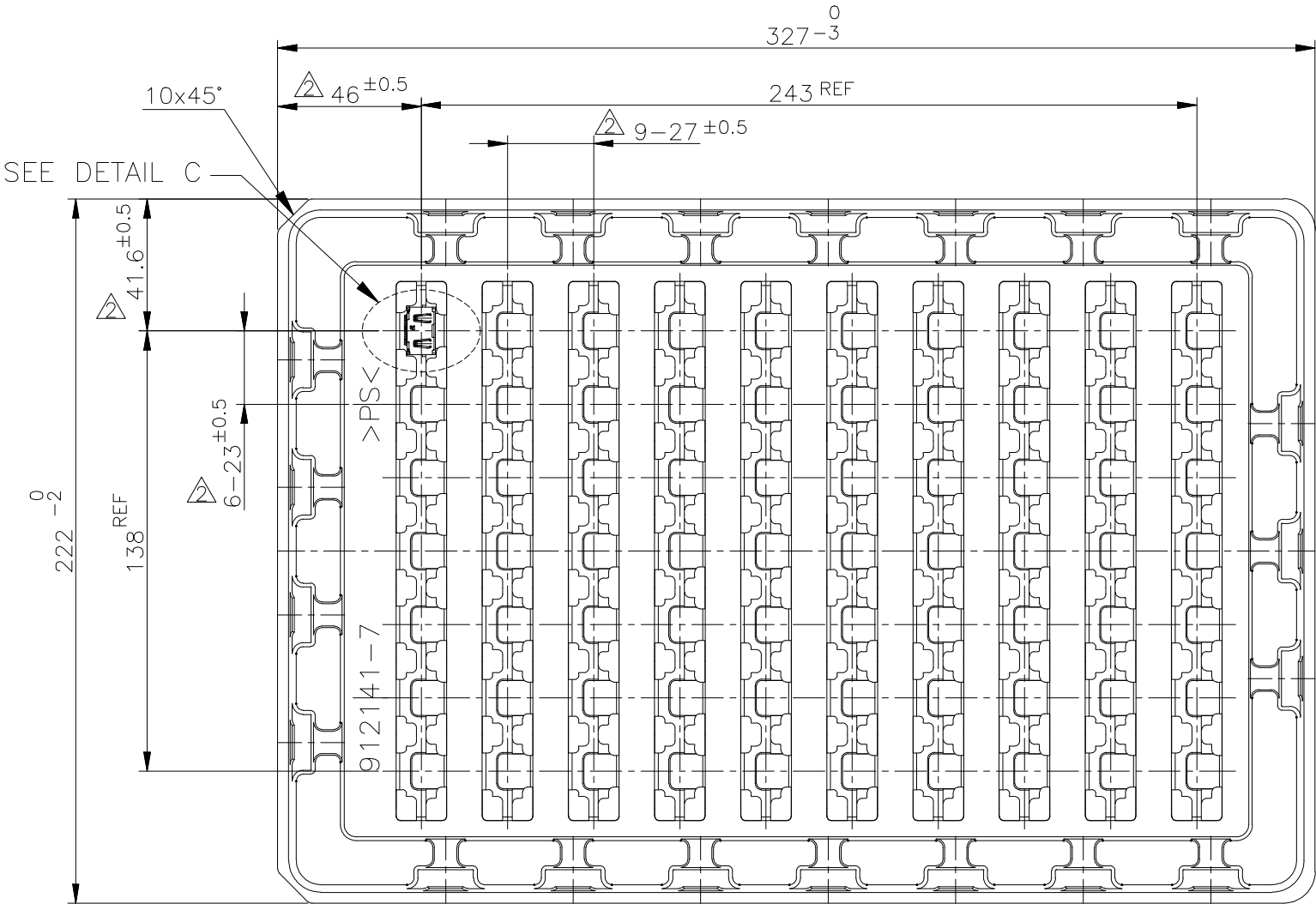
APVD

SEE SHEET 1

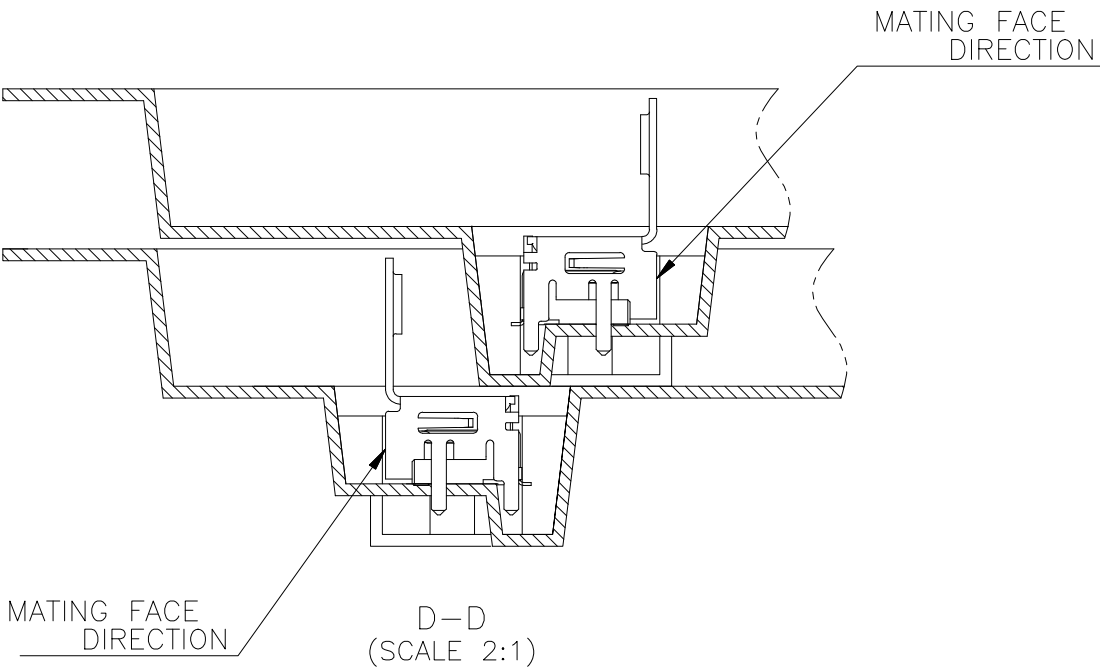
-

-

-



DETAIL C  
(SCALE 2:1)



THIS DRAWING IS A CONTROLLED DOCUMENT.

DIMENSIONS:  
单位: 毫米  
mm

TOLERANCES UNLESS  
OTHERWISE SPECIFIED:  
一般公差

0 PLC  
1 PLC  
2 PLC  
3 PLC  
4 PLC  
ANGLES  
FINISH  
仕上

MATERIAL  
材料

DWN

CHK

APVD

PRODUCT SPEC  
製品規格

APPLICATION SPEC  
取付適用規格

WEIGHT

CUSTOMER DRAWING

NAME  
名称

TE

TE Connectivity

HDMI 19 POS RECEPTACLE ASSY  
SMT SHORT TYPE

SIZE

CAGE CODE

DRAWING NO  
番号

A3

00779

1903015

RESTRICTED TO

-

SCALE  
尺度 4:1

SHEET  
9 OF 12

REV  
S3

4

3

2

1

THIS DRAWING IS UNPUBLISHED.

RELEASED FOR PUBLICATION

SEP ,2005.

© COPYRIGHT 2005 By --

ALL RIGHTS RESERVED.

LOC

DIST

REVISIONS

变更

DESCRIPTION

DATE

DWN

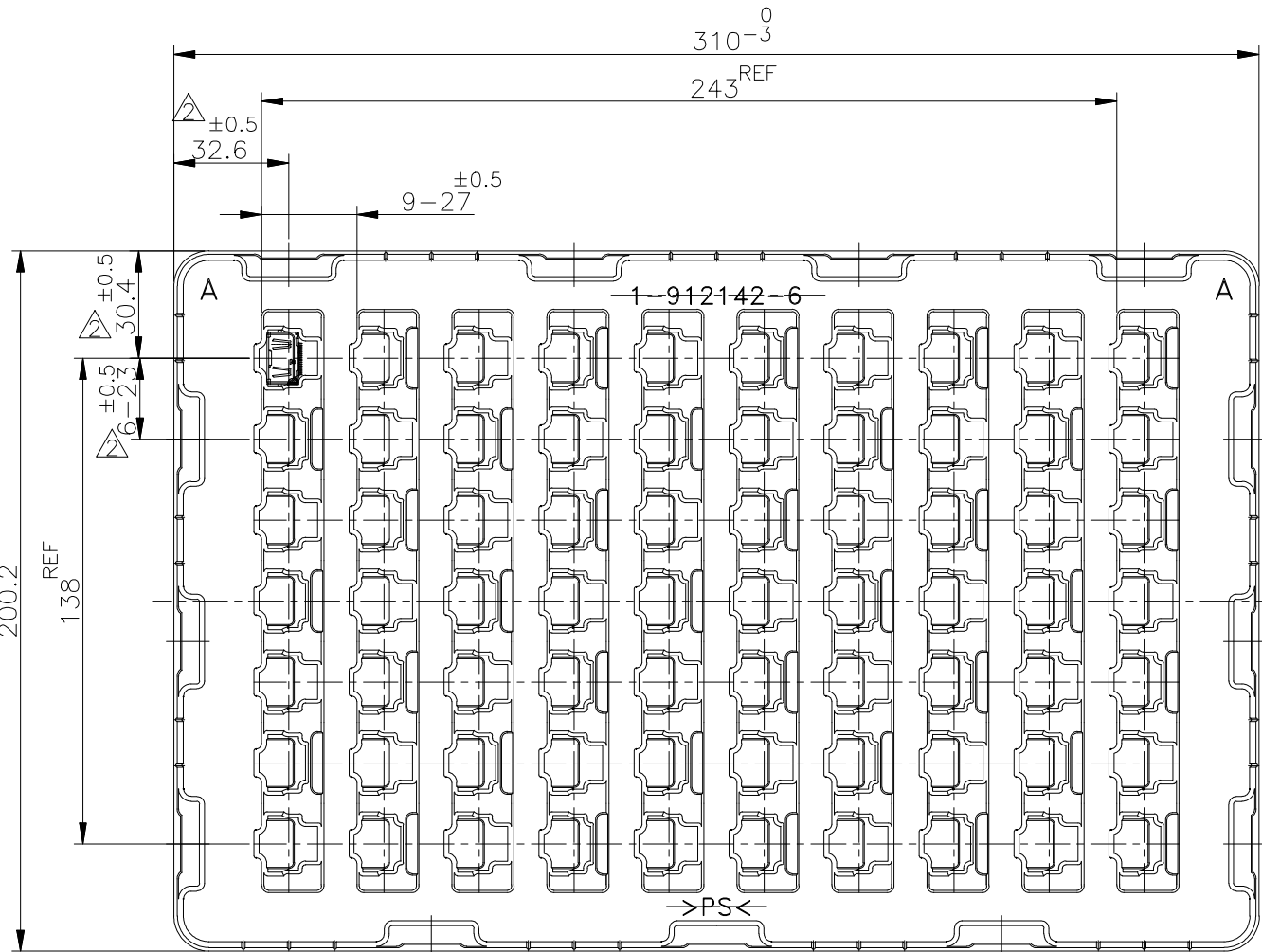
APVD

P

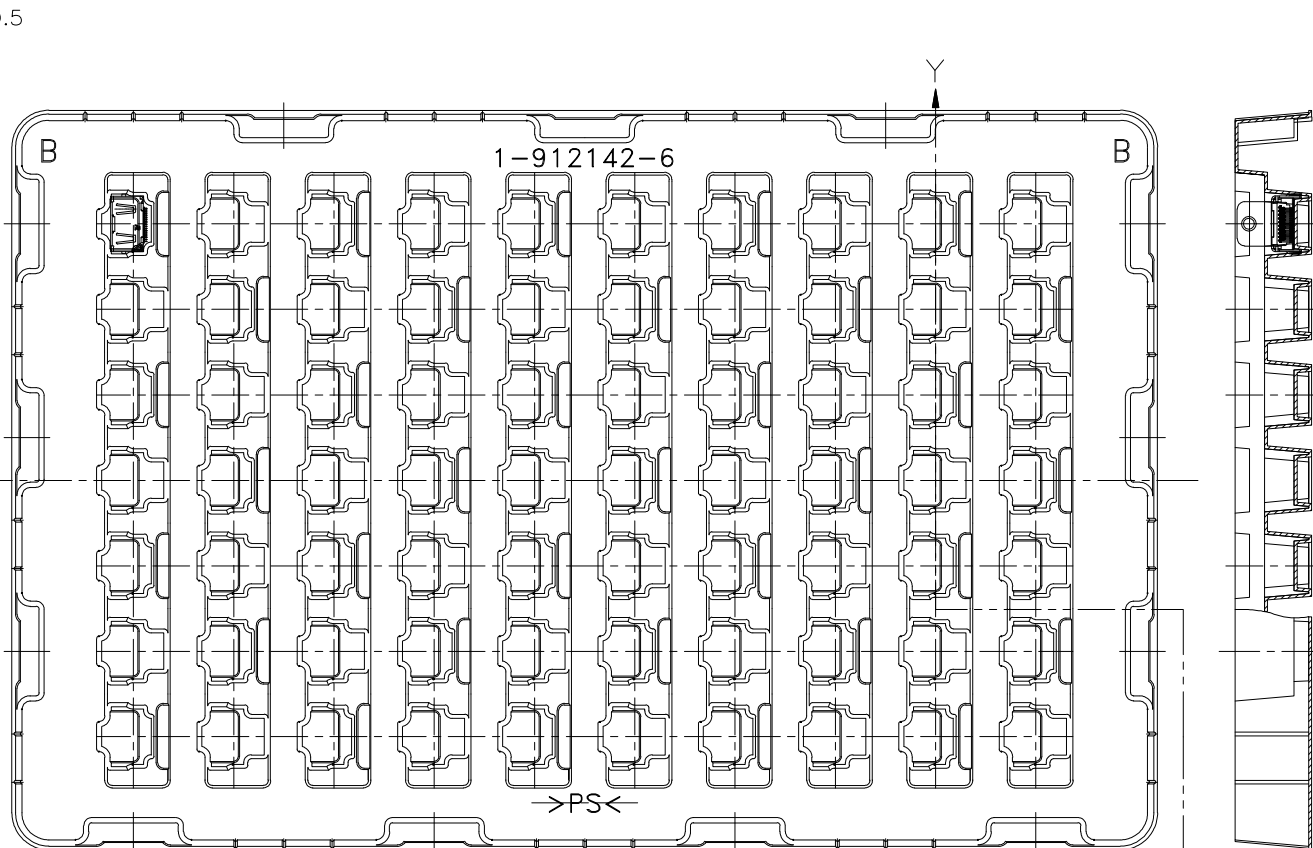
LTR

SEE SHEET 1

8-1903015-4; AS SHOWN

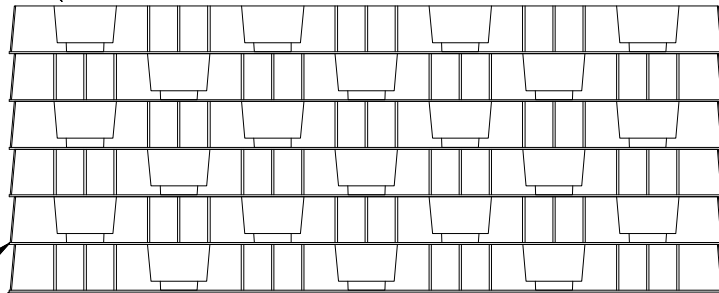


TRAY A



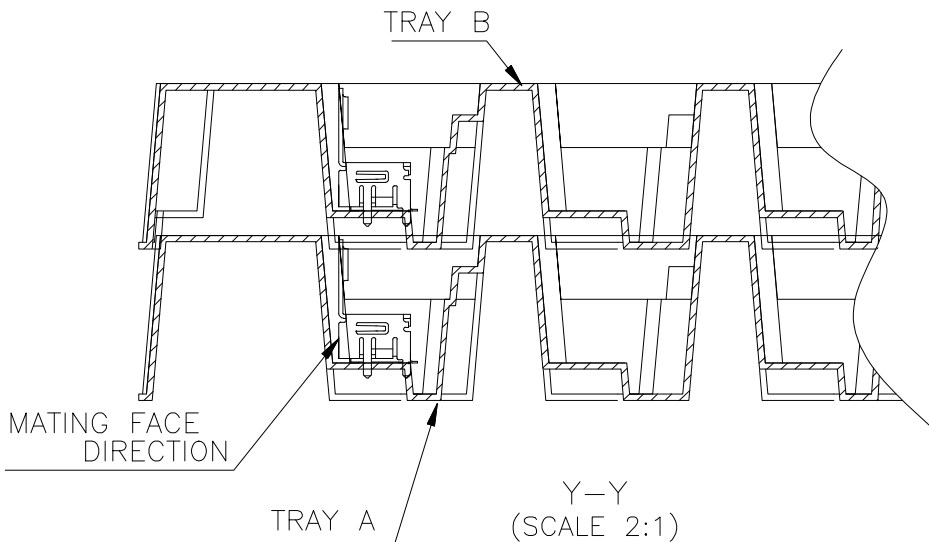
TRAY B

TRAY B (EMPTY)



TRAY B

TRAY A



MATING FACE DIRECTION

TRAY A

Y-Y  
(SCALE 2:1)

THIS DRAWING IS A CONTROLLED DOCUMENT.

DIMENSIONS:  
單位：耗  
mm

TOLERANCES UNLESS  
OTHERWISE SPECIFIED:  
一般公差

0 PLC  
1 PLC  
2 PLC  
3 PLC  
4 PLC  
ANGLES  
FINISH  
仕上

±

MATERIAL  
材料

DWN

CHK

APVD

PRODUCT SPEC

製品規格

APPLICATION SPEC

取付適用規格

WEIGHT

CUSTOMER DRAWING

NAME

名称

TE

TE Connectivity

HDMI 19 POS RECEPTACLE ASSY  
SMT SHORT TYPE

SIZE

CAGE CODE

DRAWING NO

番号

A3

00779

8-1903015

RESTRICTED TO

—

SCALE

尺度 4:1

SHEET

10 of 12

REV

S3



4

3

2

1

THIS DRAWING IS A CONTROLLED DOCUMENT.

RELEASED FOR PUBLICATION

SEP ,2005.

LOC

DIST

REVISIONS

© COPYRIGHT 2005 By -

DETAIL G  
(SCALE 2:1)

ALL RIGHTS RESERVED.

P

LTR

MATING FACE DESCRIPTION

DATE  
(SCALE 2:1)

DWN

APVD

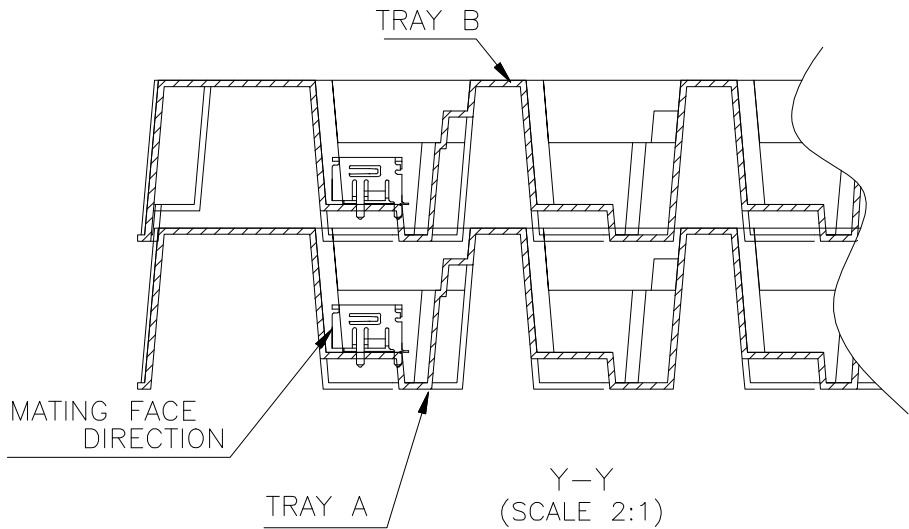
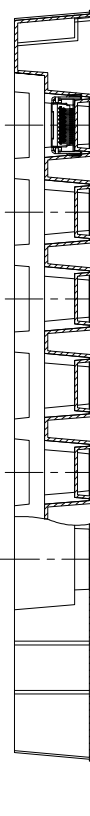
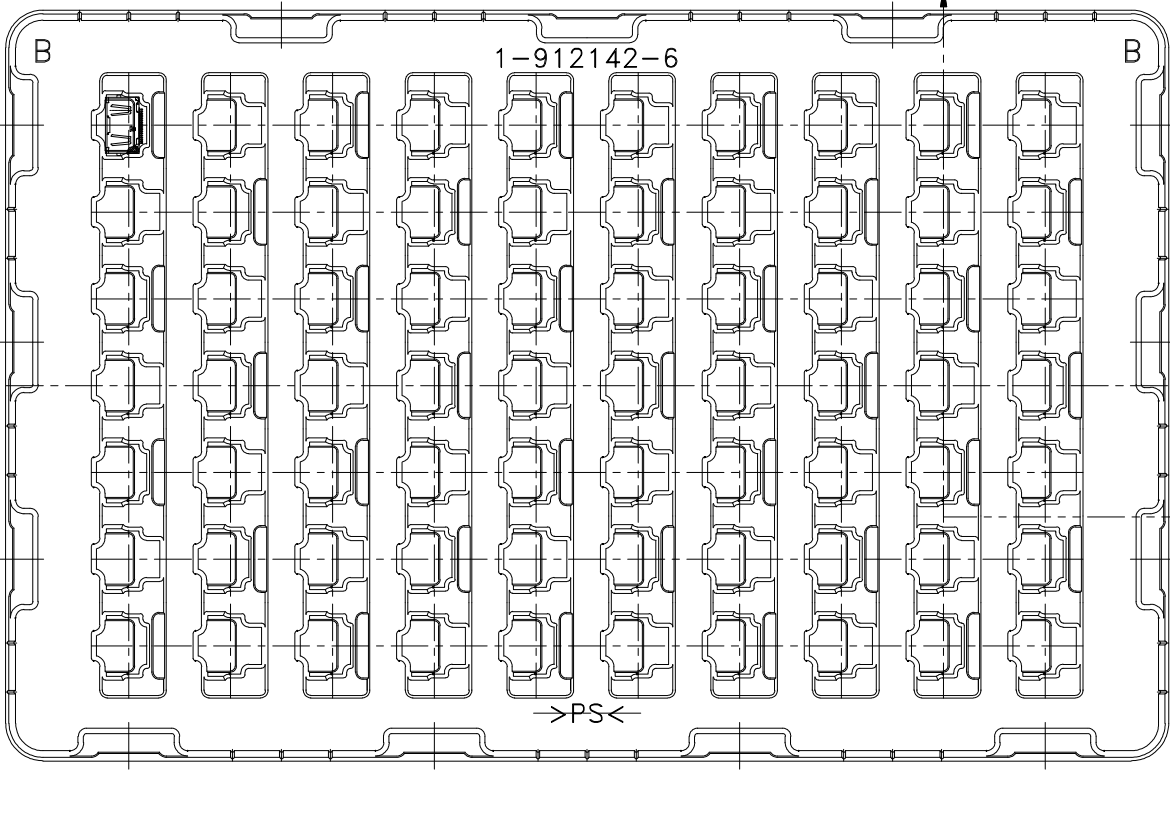
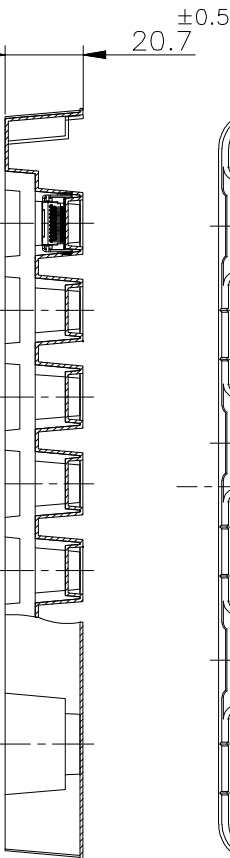
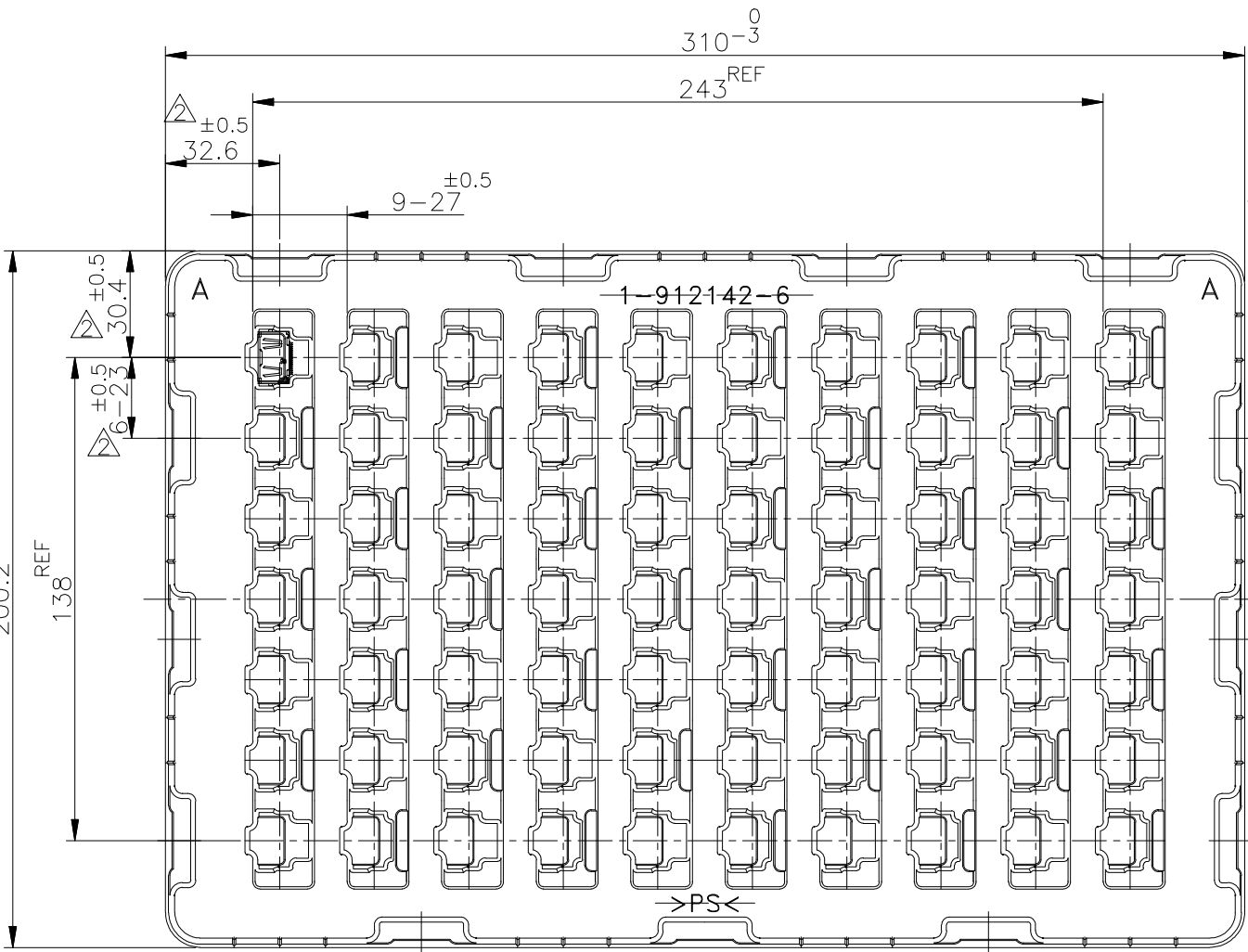
SEE SHEET 1

-

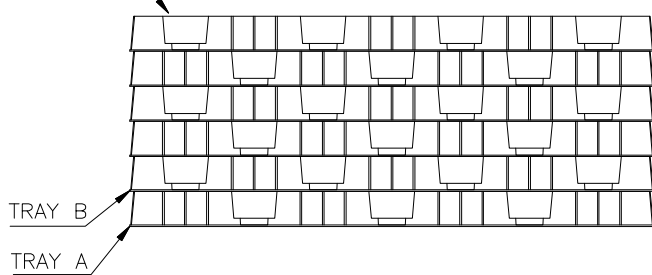
-

-

P/N:6-1903015-3



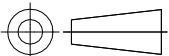
TRAY B (EMPTY)



THIS DRAWING IS A CONTROLLED DOCUMENT.

DIMENSIONS:  
単位: 桁  
mm

TOLERANCES UNLESS  
OTHERWISE SPECIFIED:  
一般公差



MATERIAL  
材料

0 PLC  
1 PLC  
2 PLC  
3 PLC  
4 PLC  
ANGLES  
FINISH  
仕上

±

DWN

CHK

APVD

PRODUCT SPEC  
製品規格

APPLICATION SPEC  
取付適用規格

WEIGHT

CUSTOMER DRAWING

NAME  
名称

HDMI 19 POS RECEPTACLE ASSY  
SMT SHORT TYPE

SIZE

CAGE CODE

DRAWING NO  
番号

A3

00779

G-1903015

RESTRICTED TO

-

PS  
MATERIAL

TRAY  
DESCRIPTION



TE Connectivity

# Mouser Electronics

Authorized Distributor

Click to View Pricing, Inventory, Delivery & Lifecycle Information:

[TE Connectivity:](#)

[4-1903015-4](#)