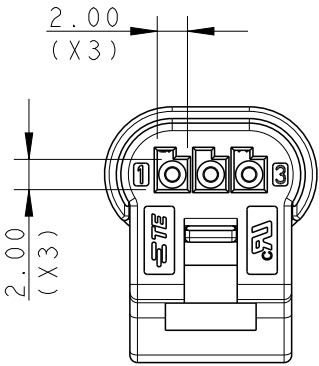
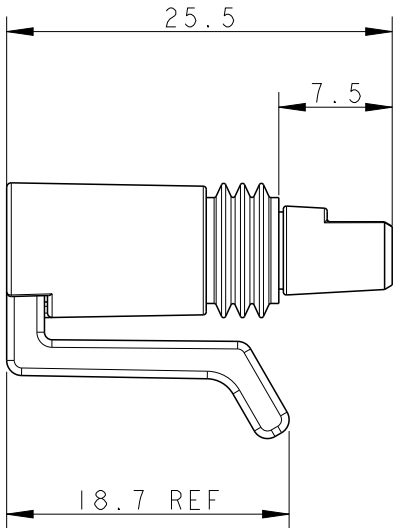
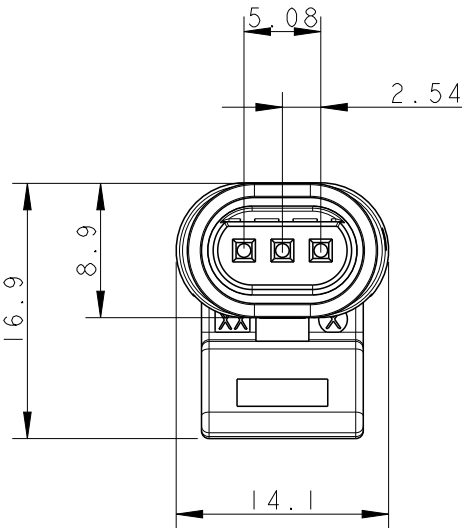


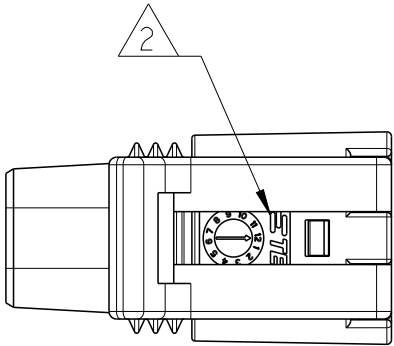
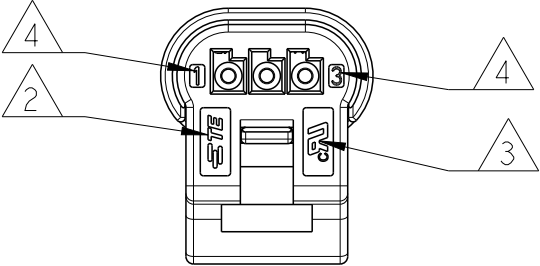
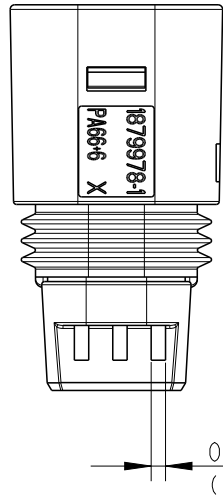
LOC GB	DIST -	REVISIONS					
		P	LTR	DESCRIPTION	DATE	DWN	APVD
			B	GAP REDUCED BETWEEN BOTH HOUSINGS	30JAN2013	SM	JC
			B1	ADDED NOTE 5	26JUL2013	KR	JC
			B2	ADDED UL LOGO	09APR2014	KR	JC
			C	MODIFIED RETENTION FEATURES	25JAN2016	MZ	MZ

D

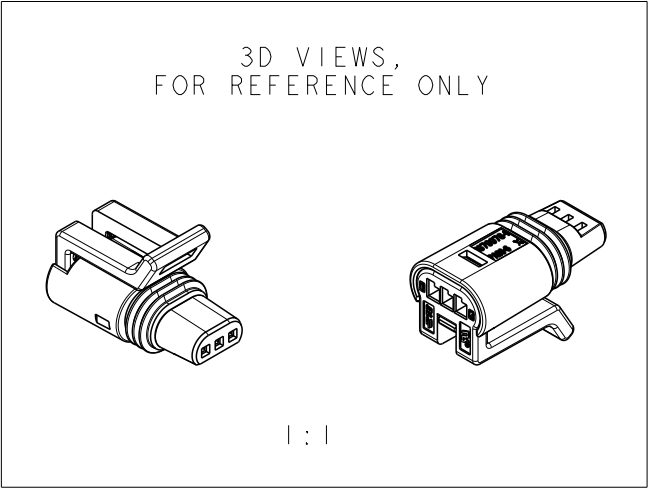
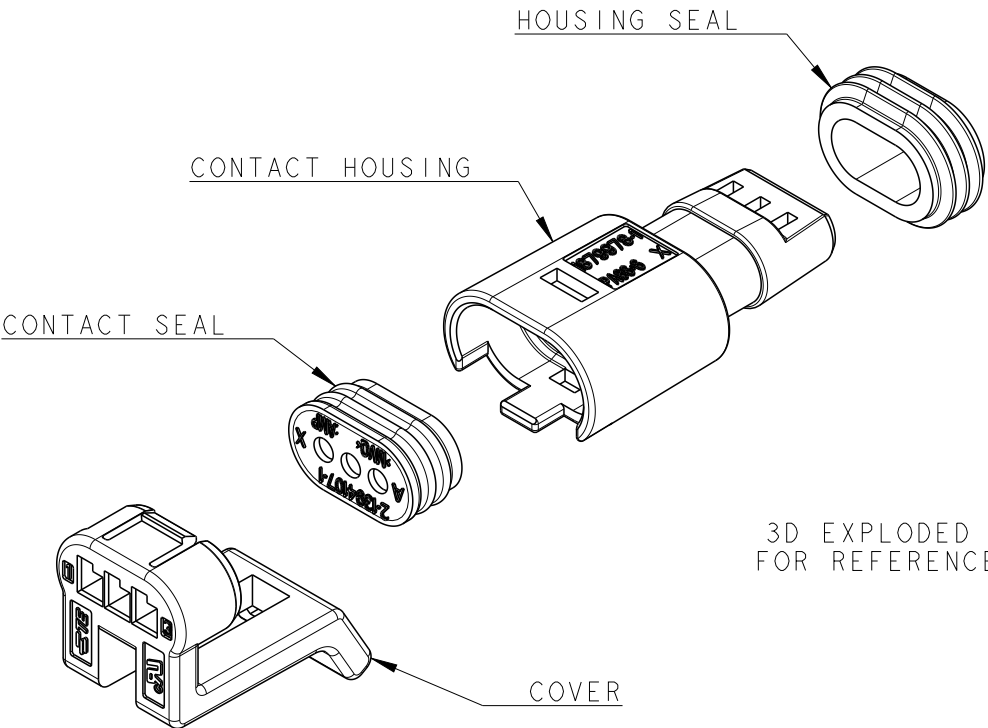


- NOTES:
- 1) PACKAGING: SEE TE SPEC. 107-85770-1
 - 2) TE LOGO
 - 3) AREA FOR AGENCY APPROVAL LOGO
 - 4) SIGNAL CODES

C

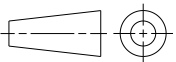


B



SIGNAL CONNECTOR	BLACK	1879980-1	C
DESCRIPTION	COLOUR	PART NO.	REV.

A

THIS DRAWING IS A CONTROLLED DOCUMENT.		DWN M. ZUCCA 20JUN2012	<div><div><div></div><div>TE</div></div><div>TE Connectivity</div></div>					
DIMENSIONS: mm		CHK M. ZUCCA 20JUN2012						
	TOLERANCES UNLESS OTHERWISE SPECIFIED:		APVD J. CATCHPOLE 20JUN2012	NAME MINI SUPERSEAL ASSEMBLY CONNECTOR				
	0 PLC ±- 1 PLC ±0.3 2 PLC ±0.15 3 PLC ±- 4 PLC ±- ANGLES ±3°		PRODUCT SPEC 108-111047					
	MATERIAL -		FINISH -					APPLICATION SPEC 114-111000
	WEIGHT -							
Customer Drawing		SIZE A3	CAGE CODE 00779	DRAWING NO C-1879980	RESTRICTED TO -			
		SCALE 2:1	SHEET 1	OF 1	REV C			

Mouser Electronics

Authorized Distributor

Click to View Pricing, Inventory, Delivery & Lifecycle Information:

[TE Connectivity:](#)

[1879980-1](#)