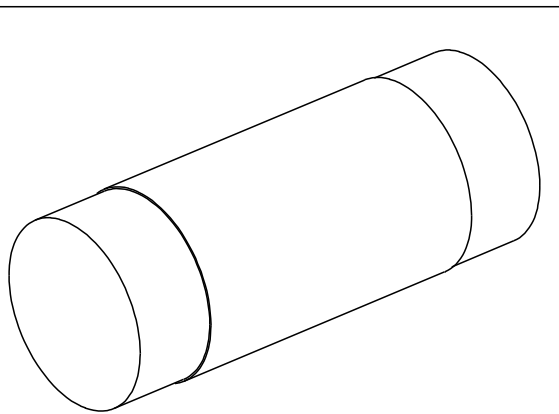
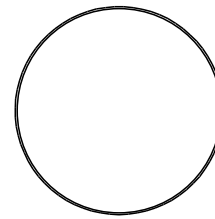
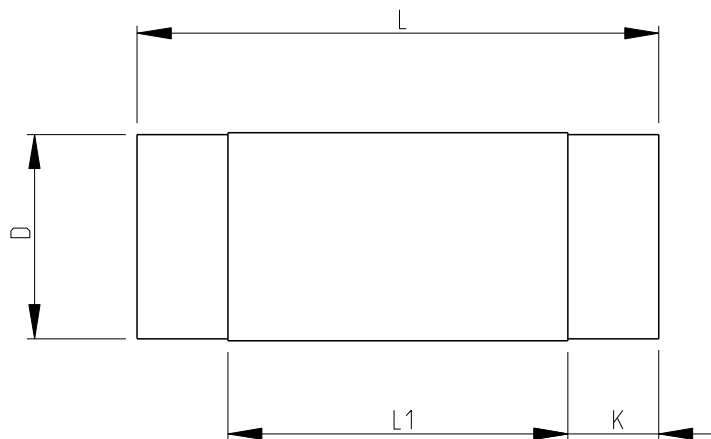


LOC	DIST	REVISIONS					
		P	LTR	DESCRIPTION	DATE	DWN	APVD
E	B		BA	NEW RELEASE	05MAY2010	PT	St.P

FOR FURTHER INFORMATION SEE DATA SHEET OF
SMA-SERIES MELF RESISTORS



RoHS Compliant

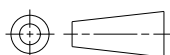
Codes	L	ØD	K	L1 Min
0204	3.45 ± 0.1	1.35 ± 0.1	0.6 ± 0.1	2.00
0207	5.90 ± 0.1	2.20 ± 0.1	1.0 ± 0.1	3.40

DIMENSIONS:

mm

TOLERANCES UNLESS
OTHERWISE SPECIFIED:

0 PLC ± 0.2
1 PLC ± 0.1
2 PLC \pm
3 PLC \pm
4 PLC \pm
ANGLES $\pm 5^\circ$



DWN 05MAY2010

PARUSURAM.T

CHK 05MAY2010

SUBHASH.M

APVD 05MAY2010

STEPHEN.P

PRODUCT SPEC

-

APPLICATION SPEC

-

WEIGHT

-

MATERIAL

-

FINISH

-



TE Connectivity

NAME

MELF RESISTORS
SMA SERIES

SIZE

CAGE CODE

DRAWING NO

RESTRICTED TO

A 4

00779

C-1879283

-

CUSTOMER DRAWING

SCALE 40:1

SHEET 1 OF 1

REV BA

2008

RELEASED FOR PUBLICATION

THIS DRAWING IS UNPUBLISHED.

ALL RIGHTS RESERVED.

© COPYRIGHT 2008

Mouser Electronics

Authorized Distributor

Click to View Pricing, Inventory, Delivery & Lifecycle Information:

[TE Connectivity:](#)

[1-1879283-7](#)