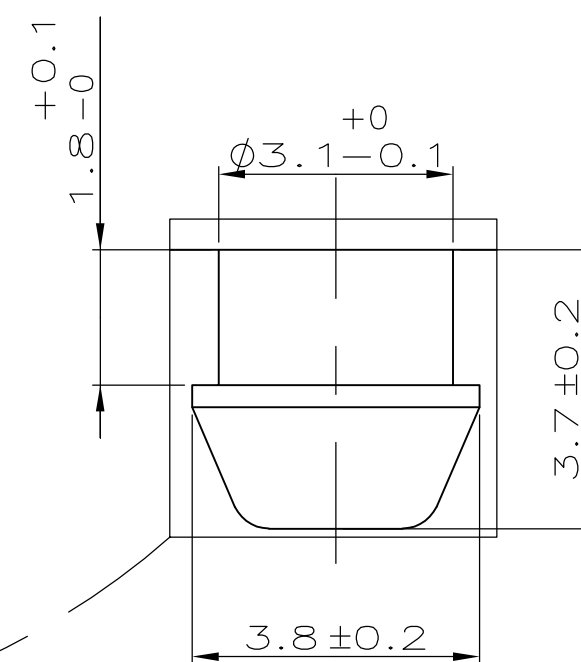
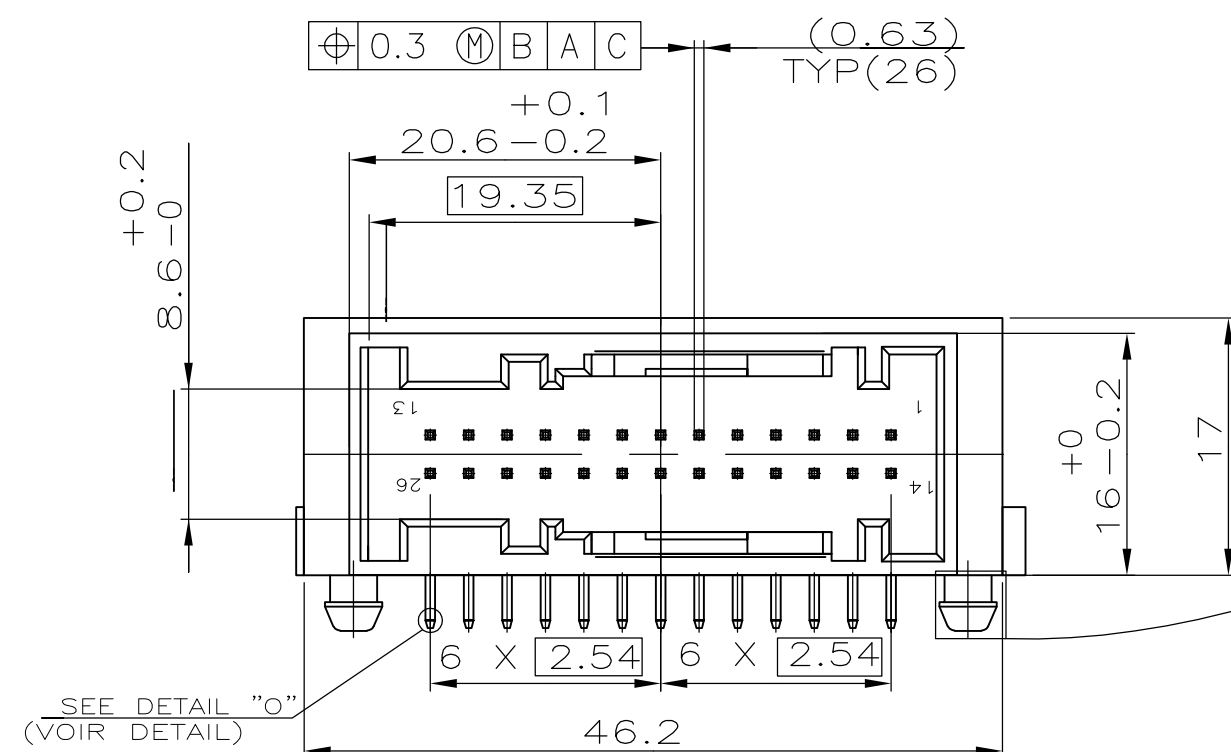
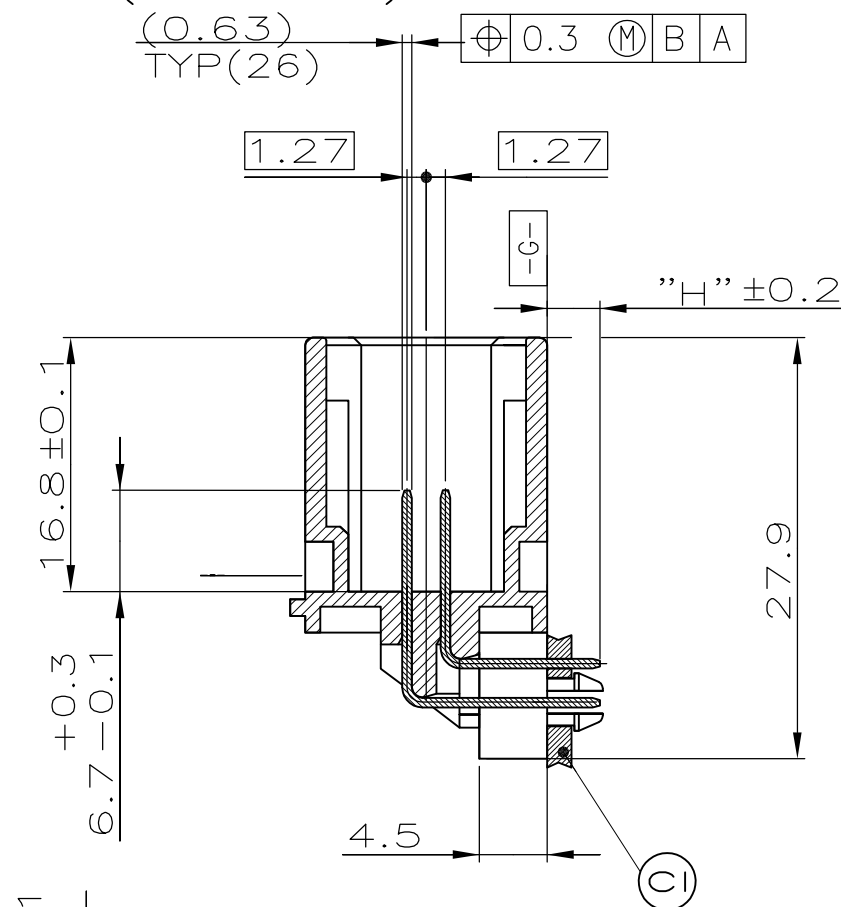
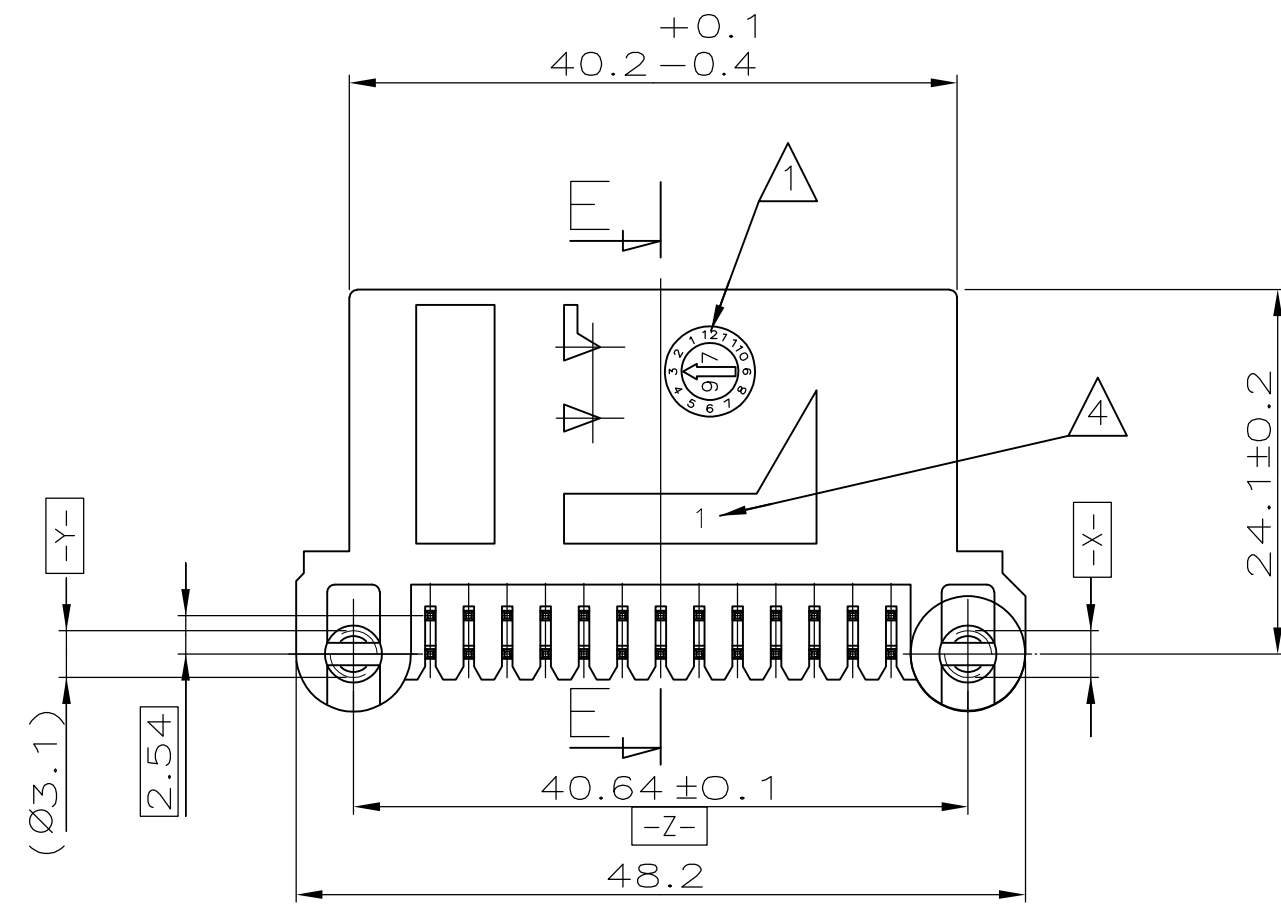


SECTIONEE  
(COUPE)

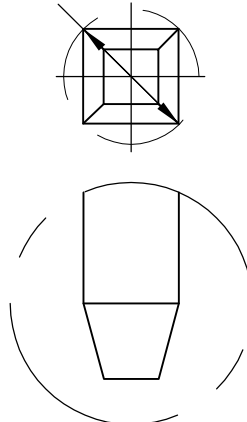
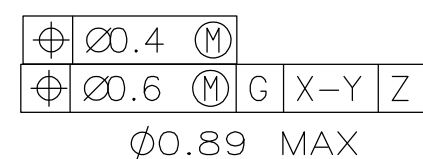
REVISONS					
P	LTR	DESCRIPTION	DATE	DWN	APVD
	WAS	P9623590	21-OCT-96	NN	—
	A	MISE A JOUR	14-APR-97	NT.N	—
	B	MISE A JOUR	26-SEP-00	NT.N	S.K
	C	NVLLE REFERENCE: 1-185904-2	04-APR-03	NT.N	J.L
	D	ADD THE NEW PN : 185904-3	15-MAR-06	NT.N	J.L
	E	ADD THE ENGLISH TRANSLATION	06-APR-06	NT.N	J.L
	F	ADD NEW PN : 2-185904-2	18JAN2016	NT.N	J.L



(SCALE :10:1)  
(ECHELLE)

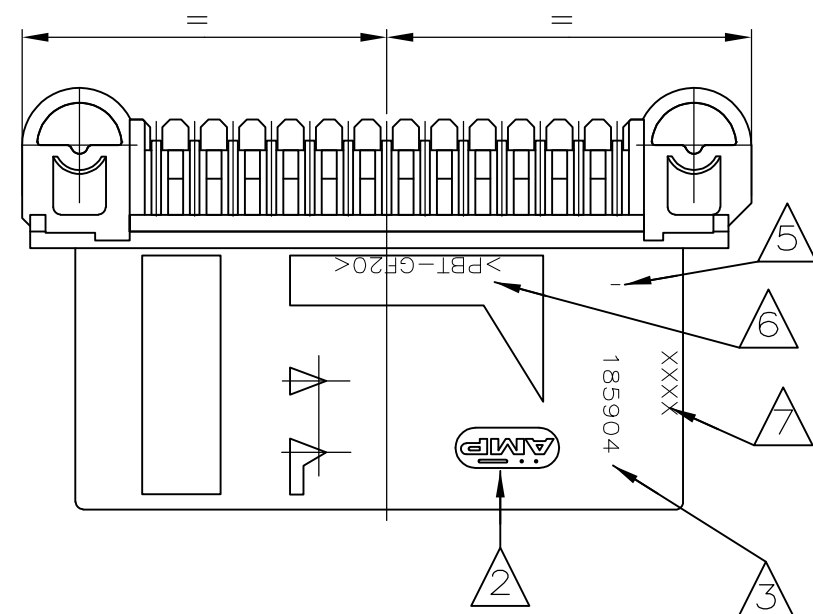
- NOTES:

- ① DATE CODE  
(DATE CODE)
- ② TE LOGO (EXISTING NAME : AMP)  
(LOGO DE TE (NOM EXISTANT : AMP) )
- ③ ASSEMBLY PART NUMBER : 185904  
(REFERENCE DU PRODUIT ASSEMBLE :)
- ④ CAVITY MARKING  
(N° D'EMPREINTE DU MOULE)
- ⑤ REVISION STATUS  
(REVISION DU MOULE)
- ⑥ MATERIAL REFERENCE : PBT 20GF  
(MATIERE)
- ⑦ ASSEMBLY DATE MARKING  
(MARQUAGE DE DATE D'ASSEMBLAGE)
- ⑧ P/N 2-185904-2 : FOR PACKAGING IN ESD TRAY + PLASTIC BAG  
(REF. POUR CONDITIONNEMENT EN PLATEAU ANTI STATIQUE + SAC PLASTIQUE)

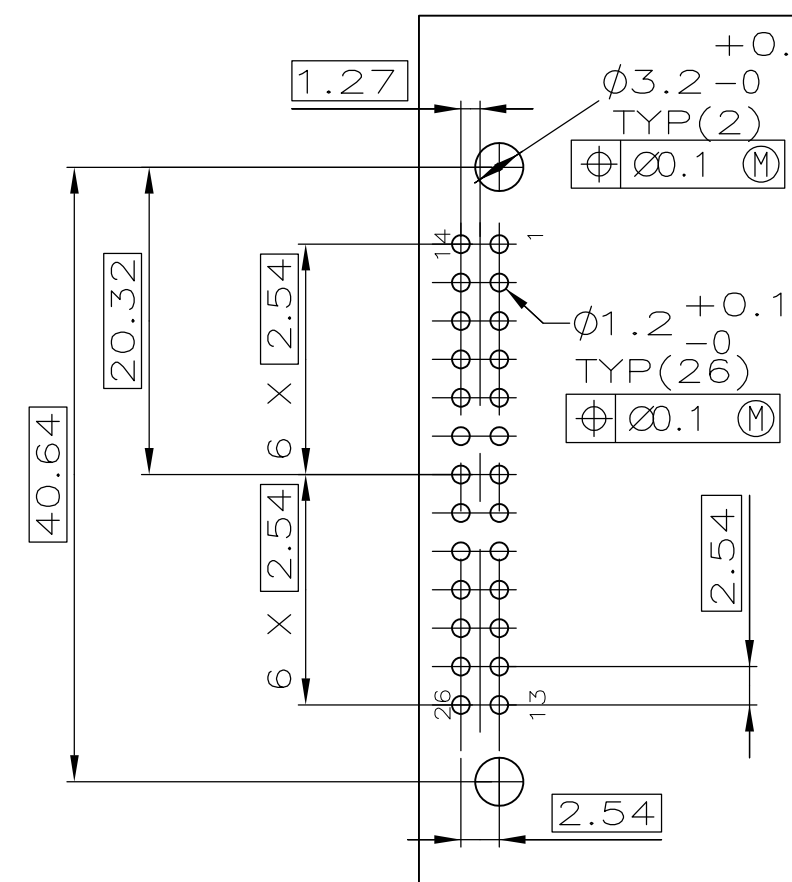




## DETAIL 0

(SCALE :20:1)  
(ECHELLE)



RECOMMENDED PCB LAYOUT  
(PRECONISATION DE L'IMPLANTATION  
DU CIRCUIT IMPRIME)



THIS DRAWING IS A CONTROLLED DOCUMENT.		DWN 16-DEC-96 Ngoc-Thanh NGUYEN CHK 17-APR-97 J.LAQUERBE		 TE Connectivity	
DIMENSIONS: mm		TOLERANCES, UNLESS OTHERWISE SPECIFIED: 0-PLC ± - 1-PLC ± 0.3 2-PLC ± - 3-PLC ± - 4-PLC ± - ANGLES ± 5°		NAME 26W MQS RIGHT ANGLE HEADER WITH BOARD-LOCKS (REVERSED INTERFACE VERSION) EMBASE COUDEE 26V MQS AVEC BOARD-LOCKS	
		PRODUCT SPEC 108-15140 APPLICATION SPEC -		SIZE A2	
MATERIAL -		FINISH -		CAGE CODE 00779	
		WEIGHT -		DRAWING NO C-185904	
		CUSTOMER DRAWING		RESTRICTED TO -	
				SCALE 2:1 SHEET 1 OF 1 REV F	

# Mouser Electronics

Authorized Distributor

Click to View Pricing, Inventory, Delivery & Lifecycle Information:

[TE Connectivity:](#)

[185904-2](#)