

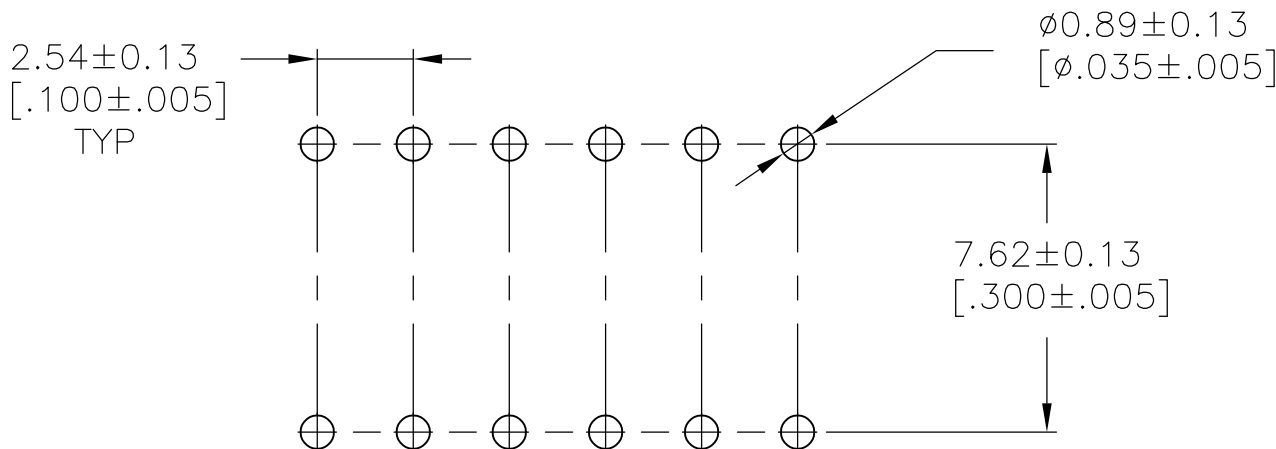
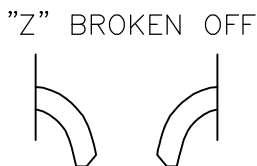
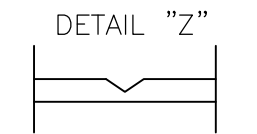
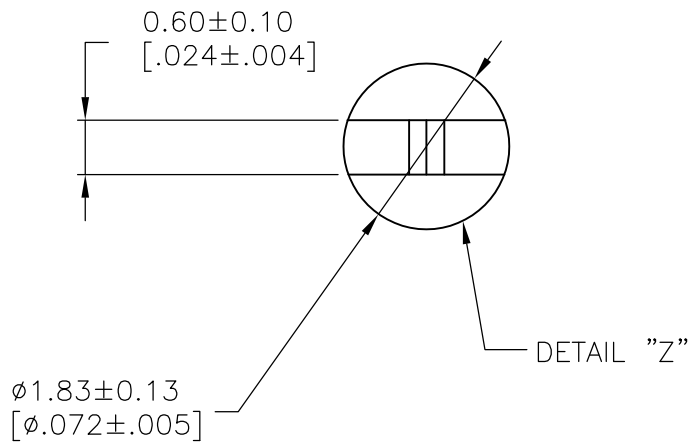
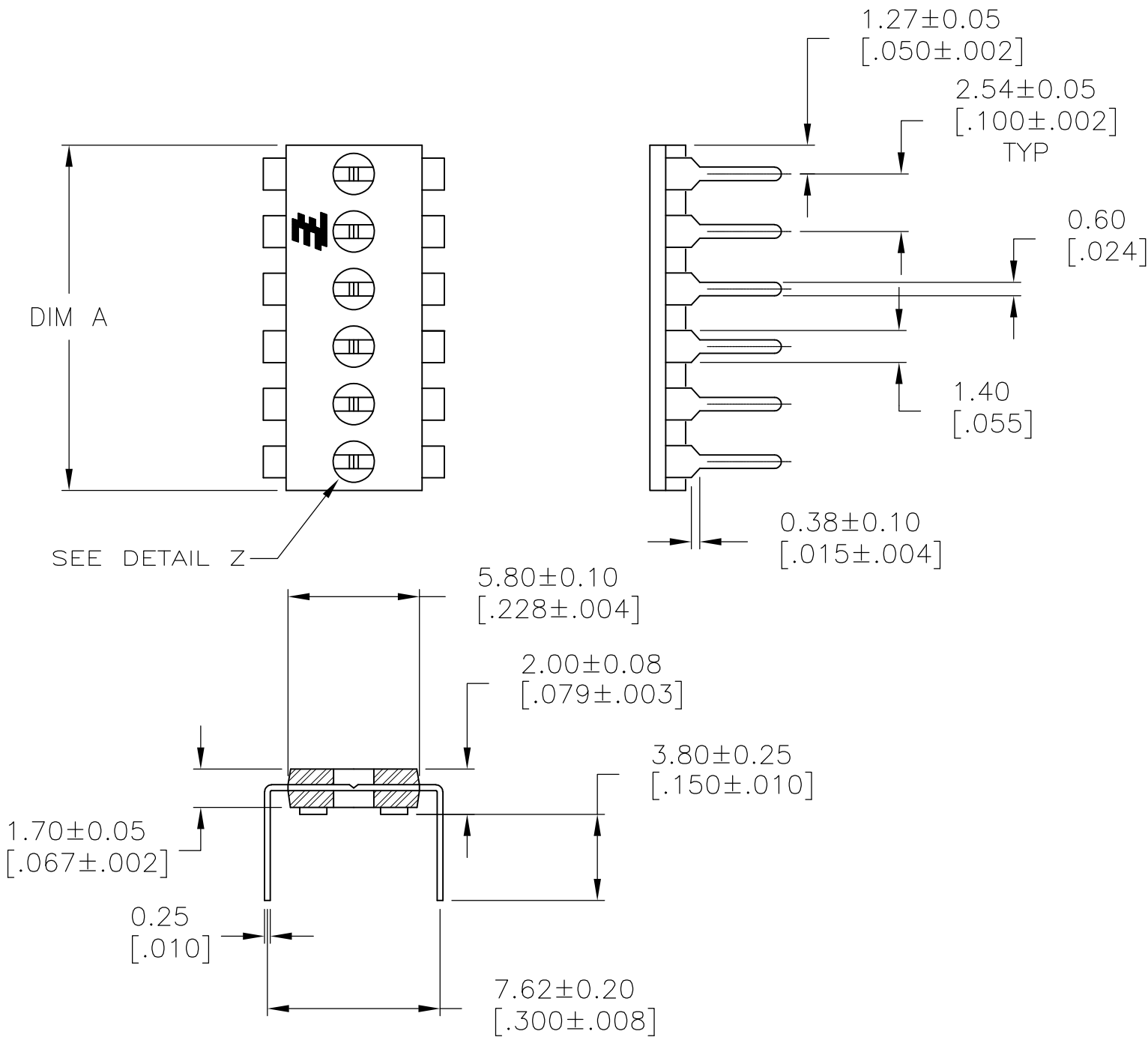
REVISIONS					
P	LTR	DESCRIPTION	DATE	DWN	APVD
	C	REVISED PER ECO-12-007413	21APR12	KH	PO
	D	REVISED PER ECO-17-001607	16MAY2017	RK	PO

SPECIFICATIONS:

MATERIAL:

CASE: HTN 30% GF UL94V-0
TERMINAL: COPPER ALLOY, TIN OVER NICKEL PLATE

1 ALL MATERIALS AND FINISHES SHALL COMPLY WITH EU
DIRECTIVE 2002/95/EC OF 27JAN2003 (ROHS)



OBOSLETE	30.48 [1.200]	12	1-1825190-0
	25.40 [1.000]	10	1825190-9
	22.86 [.900]	9	1825190-8
	20.32 [.800]	8	1825190-7
	17.78 [.700]	7	1825190-6
	15.24 [.600]	6	1825190-5
OBOSLETE	12.70 [.500]	5	1825190-4
	10.16 [.400]	4	1825190-3
OBOSLETE	7.62 [.300]	3	1825190-2
OBOSLETE	2.54 [.200]	2	1825190-1
DIM A		POSITION	PART NO.

THIS DRAWING IS A CONTROLLED DOCUMENT.		DWN B.S.VISWESWARA	06MAY05	TE Connectivity		
DIMENSIONS: mm [INCHES]		CHK M.S.SARVER	-			
	TOLERANCES UNLESS OTHERWISE SPECIFIED:		APVD M.S.SARVER	NAME		
	0 PLC ± -		PRODUCT SPEC	SHUNT, DIP, PROGRAMMABLE		
	1 PLC ± -		APPLICATION SPEC			
	2 PLC ± 0.03[.001]		-			
MATERIAL		FINISH	WEIGHT	SIZE	CAGE CODE	DRAWING NO
SEE TABLE		-	0.000000	A2	00779	C=1825190
CUSTOMER DRAWING				SCALE	SHEET	REV
				4:1	1 OF 1	D

Mouser Electronics

Authorized Distributor

Click to View Pricing, Inventory, Delivery & Lifecycle Information:

[TE Connectivity:](#)

[1825190-7](#)