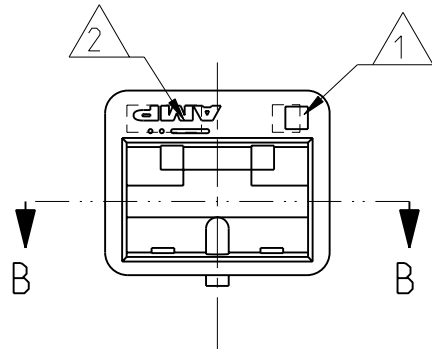
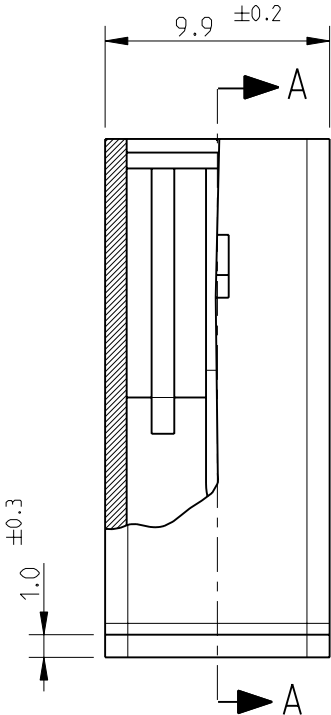


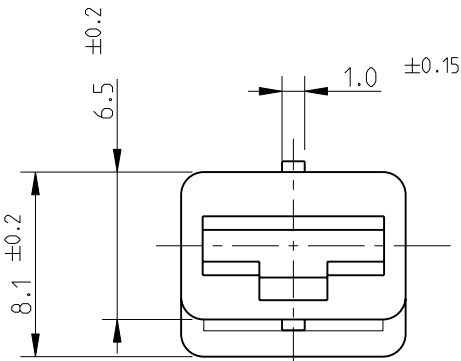
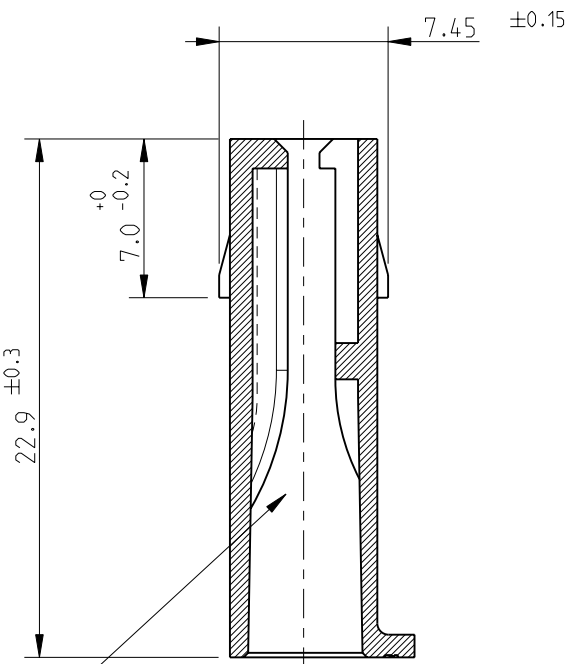
| LOC | DIST | REVISIONS | | | | |
|-----|------|-----------|-----|---------------------------|----------|-----------|
| | | P | LTR | DESCRIPTION | DATE | DWN APVD |
| 1 | - | | AB2 | ADDED P/N, ET00-0211-04 | 19/10/04 | H.Y. G.T. |
| | | | AB3 | REVISED PER ECO-09-026346 | 26NOV09 | KK AEG |
| | | | AB4 | ECR-10-022530 | 05FEB11 | KK HMR |
| | | | | | | |



SEZ. PARZIALE B-B
PARTIAL SECT. B-B





SEZ. A-A
SECT. A-A



- 1


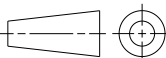
NUMERO DI IMPRONTA STAMPO
(MOULD CAVITY IDENTIFICATION NO.)
- 2

MARCHIO DI FABBRICA 
( TRADE MARK)
- 3

VERSIONE IN ACCORDO ALLA IEC 60695-2-11, IEC 60335-1 (GLOW WIRE)
(VERSION ACCORDING TO IEC 60695-2-11, IEC 60335-1, GLOW WIRE)
- 4

OBSOLETE PARTS: OBSOLETE CIS STREAMLINING PER D.RENAUD/D.SINISI

| | | | | |
|----------------------------------|---|-----------------------|-----------------------------|-------------------------|
| | 3 | NATURALE (NATURAL) | PA6 UNFILLED | 1-180905-0 |
| <div>4</div> <div>OBSOLETE</div> | | ARANCIO (ORANGE) | PA 6.6 (PA 6.6 UNFILLED) | 180905-9 |
| | | VIOLETTO (VIOLET) | | 180905-8 |
| | | GRIGIO (GRAY) | | 180905-7 |
| OBSOLETE | | MARRONE (BROWN) | | 180905-6 |
| | | NERO (BLACK) | | 180905-5 |
| | | BLU (BLUE) | | 180905-3 |
| | | VERDE (GREEN) | | 180905-2 |
| | | ROSSO (RED) | | 180905-1 |
| | | NATURALE (NATURAL) | | 180905-0 |
| NOTE | | COLORE (COLOUR) | MATERIALE (MATERIAL) | NUMERO (PART NUMBER) |

| | | | | | | | |
|---|--|-------------------------------|---|-----------|--------------|------------------------|------------|
| THIS DRAWING IS A CONTROLLED DOCUMENT. | | DWN F.BORIN 22JUN98 |  TE Connectivity | | | | |
| | | CHK C.TARTARI 22JUN98 | | | | | |
| DIMENSIONS: mm | TOLERANCES UNLESS OTHERWISE SPECIFIED: | APVD - | NAME FASTIN-FASTON TM CONNECTOR .250 SRS. FEMALE HOUSING, 1 POS. - | | | | |
|  | 0 PLC ±- 1 PLC ±- 2 PLC ±- 3 PLC ±- 4 PLC ±- ANGLES ±2° | PRODUCT SPEC 108-20020 | | | | | |
| MATERIAL SEE TABLE | FINISH - | APPLICATION SPEC - | SIZE | CAGE CODE | DRAWING NO | RESTRICTED TO - | |
| | | WEIGHT - | A3 | 00779 | ©-180905 | | |
| | | CUSTOMER DRAWING | DISEGNO PER CLIENTE SOLO PER RIFERIMENTO | | SCALE 3:1 | SHEET 1 OF 1 | REV AB4 |

Mouser Electronics

Authorized Distributor

Click to View Pricing, Inventory, Delivery & Lifecycle Information:

[TE Connectivity:](#)

[180905-1](#)