

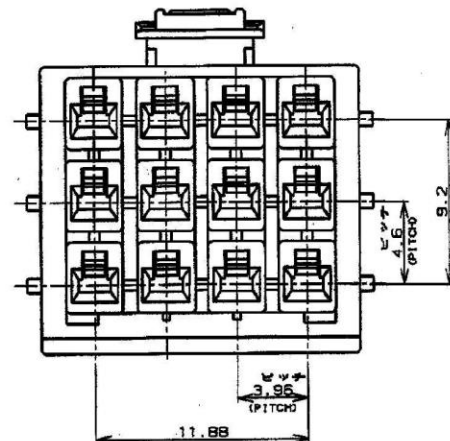
NUMBER C-177905

METRIC

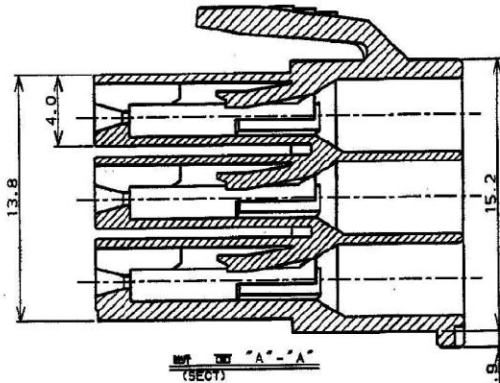
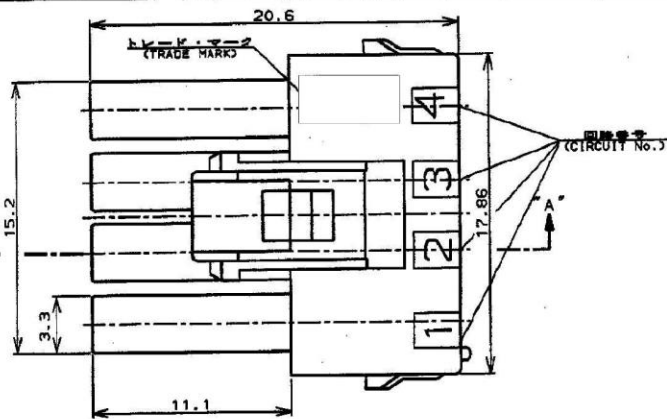
PRINT DIST

REV. 1

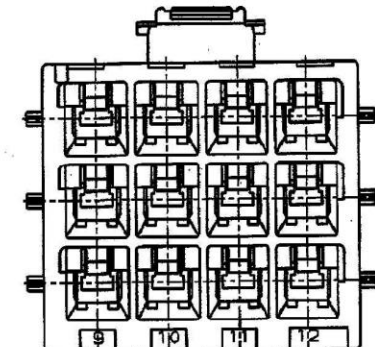
1. 適用製品規格 : 100-5410  
 2. 適用コンタクト型番  
 1) 金 : コンタクト : 177915-C(\*20-16AWG)  
 177914-C(\*26-22AWG)  
 3. 適合標準面製品型番  
 カネツパ・ハウジング : 177913-D(レール取付タイプ)  
 タブ・コンタクト : 177917-C(\*20-16AWG)  
 177916-C(\*26-22AWG)  
 4. 適用プレート型番 : 177920-D  
 5. 取扱説明書 : 411-5638



- NOTES:  
 1. PRODUCT SPEC. : 100-5410  
 2. APPLICABLE CONTACT P/N  
 REC CONTACT : 177915-C(\*20-16AWG)  
 177914-C(\*26-22AWG)  
 3. MATING CONN. P/N  
 CAP HSG : 177913-D (PANEL MOUNT)  
 TAB CONTACT : 177917-C(\*20-16AWG)  
 177916-C(\*26-22AWG)  
 4. APPLICABLE PLATE P/N : 177920-D  
 5. INSTRUCTION SHEET : 411-5638



- 6 ALL PARTS MEET RTI ELECTRICAL RATING OF 105C ACCORDING TO UL 1977.  
 △ PART 5-177905-1 COMPLY WITH GLOW WIRE REQUIREMENT FOR PARTS OF NON-METALLIC MATERIAL SUPPORTING A CURRENT-CARRYING CONNECTION DETAILED IN IEC 60335-1, SECTION 30(GWT)  
 △ PART 177905-7 COMPLY WITH HOT WIRE REQUIREMENT, PA66, UL 94V-0. HOT WIRE IGNITION(HWI) VERSION ARE MOLDED IN A RESIN THAT COMPLIES WITH TE HOT WIRE IGNITION TEST 109-32026 AND ARE RECOMMENDED FOR USE WITH HWI HOUSING THAT ALSO COMPLY.  
 △ Preliminary-not for production  
 10. APPLICATION SPEC: 114-5175



自然色(NATURAL)	12	177905-7
自然色(NATURAL)	12	5-177905-1
青 (BLUE)	↑	↑ -6
黄 (YELLOW)	↓	↓ -4
自然色(NATURAL)	12	177905-1
ハウジング色別 極微	型番	
(HOUSING COLOR) (P/N)		

D6	REVISED PER ECR-19-017851	SM	DZ	20NOV 2019
D5	REVISED ECR-19-014813	M.G	D.Z	20SEP 2019
D4	REVISED ECR-14-017020	W.W	D.Z	14NOV 2014
D3	REVISED ECR-14-013449	W.W	D.Z	14SEP 2014
D2	REVISED ECR-13-019881	A.Z	D.Z	23DEC 2013
D1	REVISED ECR-12-019929	A.Z	F.M	16NOV 2012
D	変更 P100-01	M	M	1398-01
C	変更 P100-01	M	M	0724-99
B	変更 P100-01	T.Y	M.S	0823-98
LTR	変更 (REVISION RECORD)	DR	CHK	DATE

AMP Tyco Electronics AMP K.K. Kawasaki, Japan	
AMP POWER DOUBLE LOCK CONN.	
12個 3.95mmピッチ プラダハウジング (3列タイプ)	
AMP POWER DOUBLE LOCK CONN. 3.95mm PITCH PLUS HOUSING 12 Pos (TPL ROM)	
SIZE	LOC
B	J
C-177905	
REV.	D6
SHEET 1 OF 1	

CUSTOMER DRAWING

# Mouser Electronics

Authorized Distributor

Click to View Pricing, Inventory, Delivery & Lifecycle Information:

[TE Connectivity:](#)

[177905-1](#)