

LOC	DIST	REVISIONS					
		P	LTR	DESCRIPTION	DATE	DWN	APVD
DW	—		B1	REVISED PER ECO-19-018013	10MAR20	K.G	W.H
			B2	REVISED PER ECO-20-011206	10JUN20	K.G	W.H

NOTES :

1. MATERIAL :

1.1 HOUSING: MATERIAL AND COLOR: SEE TABLE, UL94 V-0

1.2 CONTACT: STAINLESS STEEL

2. FINISH : CONTACT

2.1 GOLD FLASH PLATING ON CONTACT AREA,
2.54um [100u"] MIN. MATTE-TIN PLATING ON SOLDERING AREA.
0.76um [30u"] MIN. NICKEL UNDERPLATING OVERALL.

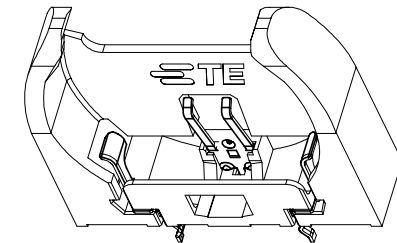
2.2 GOLD PLATING 0.125um [5u"] MIN.ON CONTACT AREA,
2.54um [100u"] MIN. MATTE-TIN PLATING ON SOLDERING AREA.
1.25um [50u"] MIN. NICKEL UNDERPLATING OVERALL.

3. WAVE SOLDER CAPABLE TO 265°C PER TE SPEC. 109-202, CONDITION B.

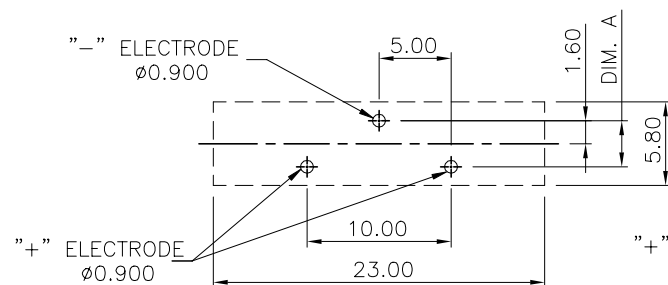
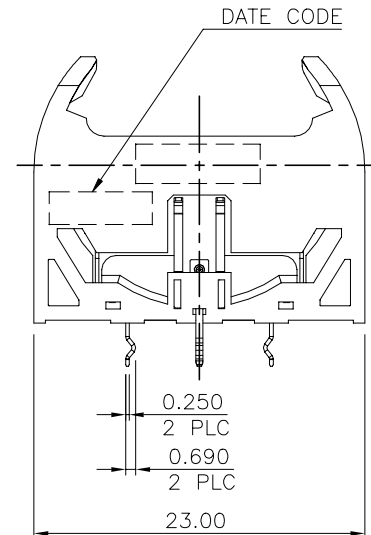
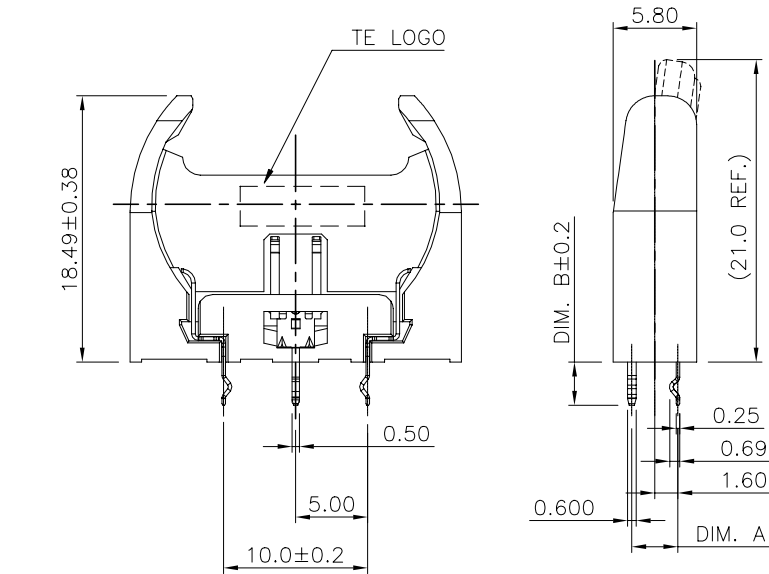
4. RECOMMENDED PCB THICKNESS: 1.6mm

5. SUITABLE FOR BATTERY NO.: CR2032.

6. LOW PCB RETENTION FORCE.

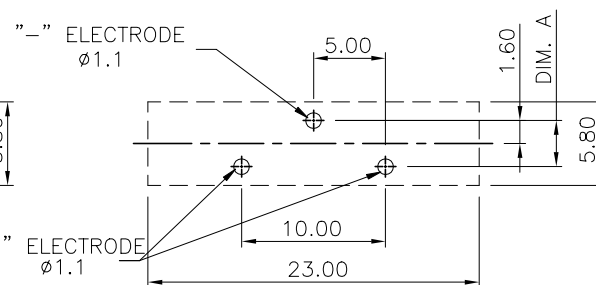


2.1	3.0 mm	3.2 mm	PA-66 & BLACK	2-1775485-4
2.2	3.6 mm	3.6 mm	PA-66 & BLACK	1775485-5
2.1				2-1775485-1
2.1	3.0 mm	3.2 mm	PA-66 & 2718C BLUE	1-1775485-2
2.1			PA-66 & BLACK	1-1775485-1
2.1			PA-66 & 2718C BLUE	1775485-2
2.2	3.0 mm	3.6 mm	PA-66 & BLACK	1775485-4
2.1				1775485-1
FINISHED	DIM B	DIM A	HOUSING MATERIAL&COLOR	PART NO.



RECOMMENDED PCB HOLE LAYOUT

PCB TOLERANCE ±0.05

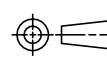


RECOMMENDED PCB HOLE LAYOUT

PCB TOLERANCE ±0.05

THIS DRAWING IS A CONTROLLED DOCUMENT.

DIMENSIONS: MM



MATERIAL
SEE NOTE

TOLERANCES UNLESS OTHERWISE SPECIFIED:

0 PLC ± -
1 PLC ± 0.38
2 PLC ± 0.25
3 PLC ± 0.15
4 PLC ± -
ANGLES ± 2°

FINISH
SEE NOTE

DWN S. CHIEN 03JUN2008

CHK S. CHIEN 03JUN2008

APVD W. KODAMA 03JUN2008

PRODUCT SPEC

108-57542

QUALIFICATION TEST REPORT

501-57624

WEIGHT 1.19 GRAMS

CUSTOMER DRAWING



TE Connectivity

NAME

BATTERY HOLDER, H=18.5mm, V/T

SIZE CAGE CODE DRAWING NO

A3 00779 C=1775485

RESTRICTED TO

SCALE SHEET 1 OF 4 REV B2

4

3

2

1

THIS DRAWING IS UNPUBLISHED.

RELEASED FOR PUBLICATION

AUG ,2006.



COPYRIGHT

BY TYCO ELECTRONICS CORPORATION.

ALL RIGHTS RESERVED.

LOC
DWDIST
—

REVISIONS

P	LTR	DESCRIPTION	DATE	DWN	APVD
		SEE SHEET 1.			

NOTES :

1. MATERIAL :

1.1 HOUSING: UL94 V-0, PA SERIES COLOR: SEE TABLE

1.2 CONTACT: STAINLESS STEEL

2. FINISH :

2.1 CONTACT

GOLD FLASH PLATING ON CONTACT AREA,

2.54um [100u"] MIN. MATTE-TIN PLATING ON SOLDERING AREA.

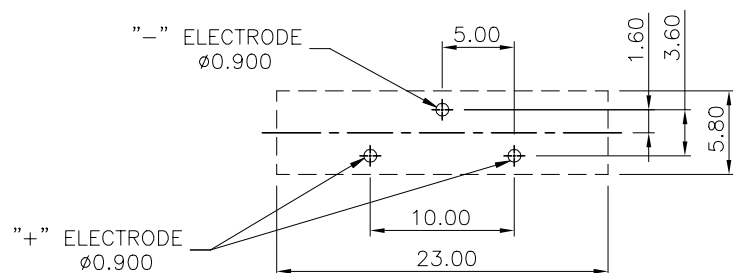
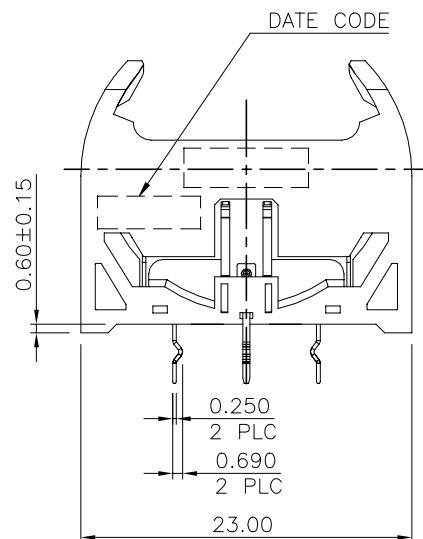
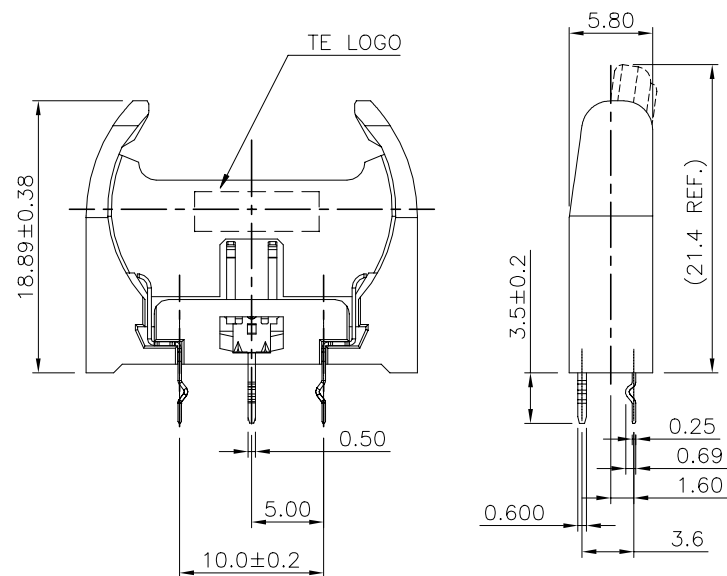
0.76um [30u"] MIN. NICKEL UNDERPLATING OVERALL.

3. WAVE SOLDER CAPABLE TO 265°C PER TE SPEC. 109-202, CONDITION B.

4. RECOMMENDED PCB THICKNESS: 1.6mm

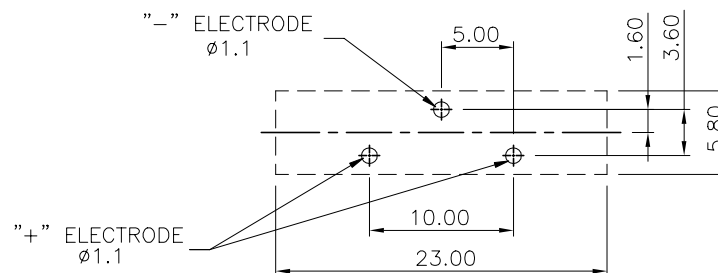
5. SUITABLE FOR BATTERY NO.: CR2032.

△ LOW PCB RETENTION FORCE.



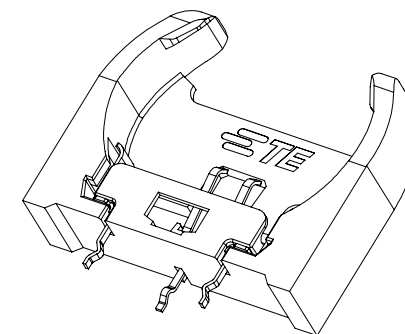
RECOMMENDED PCB HOLE LAYOUT

PCB TOLERANCE ±0.05



△ RECOMMENDED PCB HOLE LAYOUT

PCB TOLERANCE ±0.05

PRODUCT AS SHOWN
(0.60mm Height Standoff)

SOFT TRAY

1775485-3

PACKING

PART NO.

THIS DRAWING IS A CONTROLLED DOCUMENT.

DWN S. CHIEN 03JUN2008

CHK S. CHIEN 03JUN2008

APVD W. KODAMA 03JUN2008

PRODUCT SPEC

108-57542

QUALIFICATION TEST REPORT

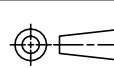
501-57624

WEIGHT 1.19 GRAMS

CUSTOMER DRAWING

DIMENSIONS:

MM



TOLERANCES UNLESS OTHERWISE SPECIFIED:

0 PLC	± -
1 PLC	± 0.38
2 PLC	± 0.25
3 PLC	± 0.15
4 PLC	± -
ANGLES	± 2°

MATERIAL
SEE NOTEFINISH
SEE NOTE

TE Connectivity

NAME

BATTERY HOLDER, H=18.9mm V/T

SIZE

CAGE CODE

DRAWING NO

A3 00779 C=1775485

RESTRICTED TO

SCALE

SHEET

2 OF 4

REV B2

4

3

2

1

THIS DRAWING IS UNPUBLISHED.

RELEASED FOR PUBLICATION

AUG ,2006.

© COPYRIGHT

BY TYCO ELECTRONICS CORPORATION.

ALL RIGHTS RESERVED.

LOC
DWDIST
/

REVISIONS

P	LTR	DESCRIPTION	DATE	DWN	APVD
		SEE SHEET 1.			

NOTES :

1. MATERIAL :

1.1 HOUSING: UL94 V-0, PA SERIES COLOR: SEE TABLE

1.2 CONTACT: STAINLESS STEEL

2. FINISH :

2.1 CONTACT

GOLD FLASH PLATING ON CONTACT AREA,

2.54um [100u"] MIN. MATTE-TIN PLATING ON SOLDERING AREA.

0.76um [30u"] MIN. NICKEL UNDERPLATING OVERALL.

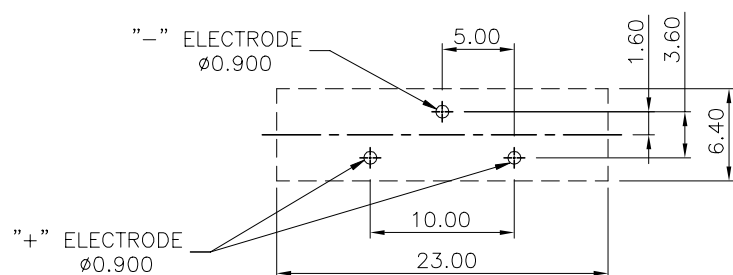
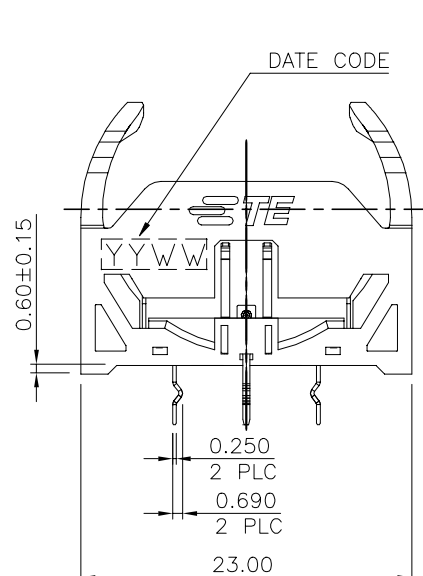
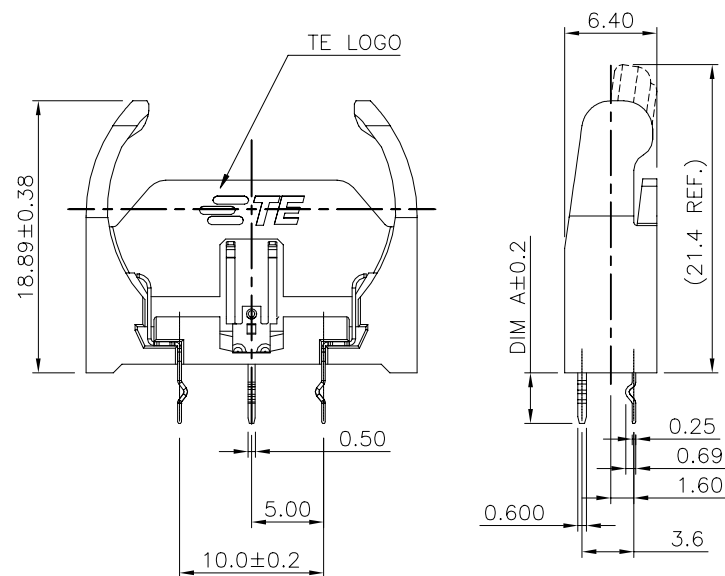
3. WAVE SOLDER CAPABLE TO 265°C PER TE SPEC. 109-202, CONDITION B.

4. RECOMMENDED PCB THICKNESS: 1.6mm

5. SUITABLE FOR BATTERY NO.: CR2032.

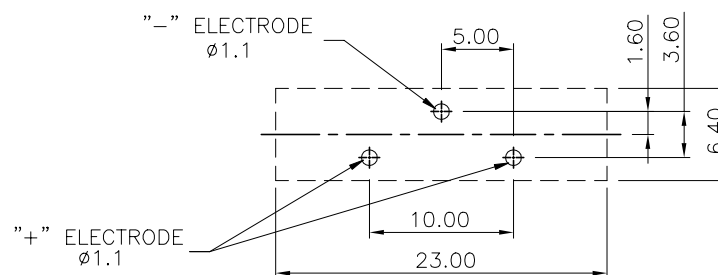
6. LOW PCB RETENTION FORCE.

7. 3-1775485-2 AND 4-1775485-2 ARE PRELIMINARY PART



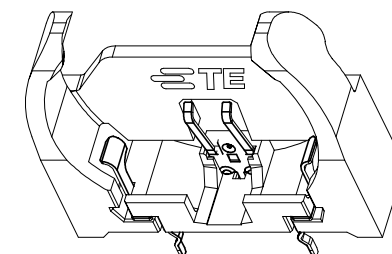
RECOMMENDED PCB HOLE LAYOUT

PCB TOLERANCE ±0.05



RECOMMENDED PCB HOLE LAYOUT

PCB TOLERANCE ±0.05



3.00	PA10T HF & BLACK	3-1775485-2
3.50	PA10T HF&2718C BLUE	2-1775485-2
DIM A	HOUSING COLOR	PART NO.

THIS DRAWING IS A CONTROLLED DOCUMENT.

DWN S. CHIEN 03JUN2008

CHK S. CHIEN 03JUN2008

APVD W. KODAMA 03JUN2008

PRODUCT SPEC

108-57542

QUALIFICATION TEST REPORT

501-57624

WEIGHT 1.19 GRAMS

CUSTOMER DRAWING

DIMENSIONS:

MM



TOLERANCES UNLESS OTHERWISE SPECIFIED:

0 PLC	± -
1 PLC	± 0.38
2 PLC	± 0.25
3 PLC	± 0.15
4 PLC	± -
ANGLES	± 2°

MATERIAL
SEE NOTEFINISH
SEE NOTE

TE

TE Connectivity

NAME

BATTERY HOLDER, H=18.9mm V/T

SIZE

CAGE CODE

DRAWING NO

A3

00779

C=1775485

RESTRICTED TO

SCALE

SHEET

3 OF 4

REV B2

4

3

2

1

THIS DRAWING IS UNPUBLISHED.

RELEASED FOR PUBLICATION

AUG ,2006.



COPYRIGHT

BY TYCO ELECTRONICS CORPORATION.

ALL RIGHTS RESERVED.

LOC

DIST

REVISIONS

P	LTR	DESCRIPTION	DATE	DWN	APVD
		SEE SHEET 1.			

NOTES :

1. MATERIAL:

1.1 TRAY:

1775485-1/1775485-2/1775485-4/1775485-5 SOFT TRAY

1-1775485-1/1-1775485-2/2-1775485-1 SOFT TRAY

2-1775485-2/1775485-3 SOFT TRAY

2-1775485-4/3-1775485-2 HARD TRAY

1.2 SHIPPING CARTON: CORRUGATED FIBERBOARD

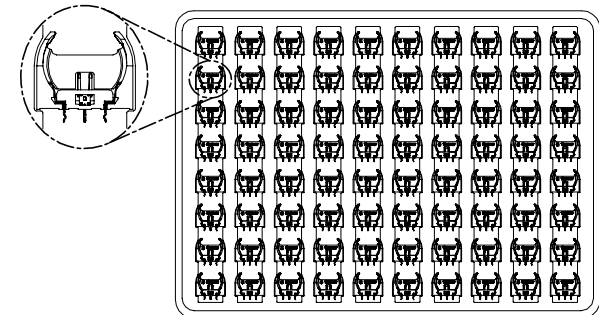
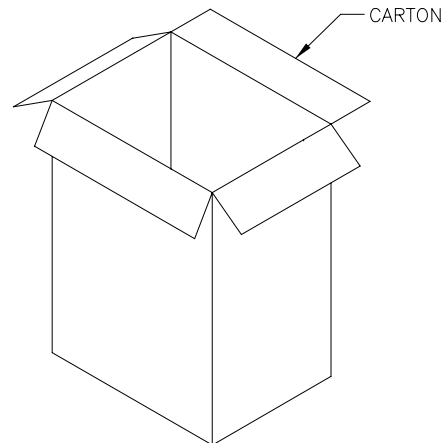
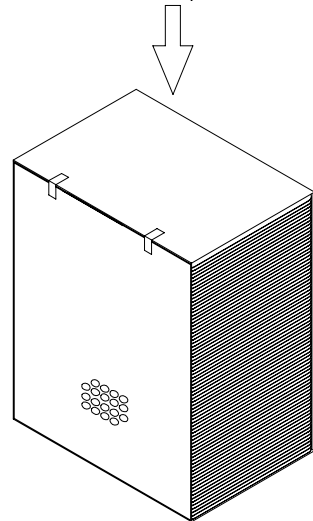
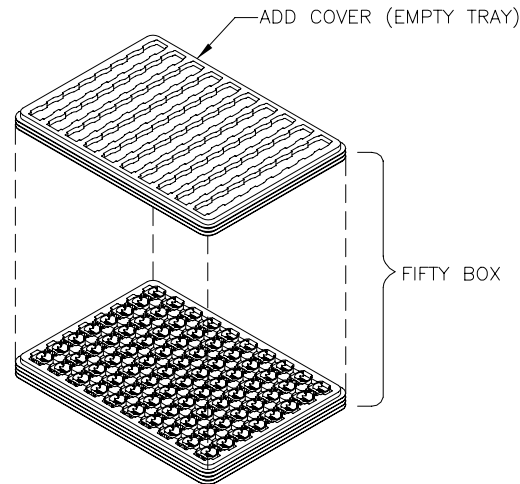
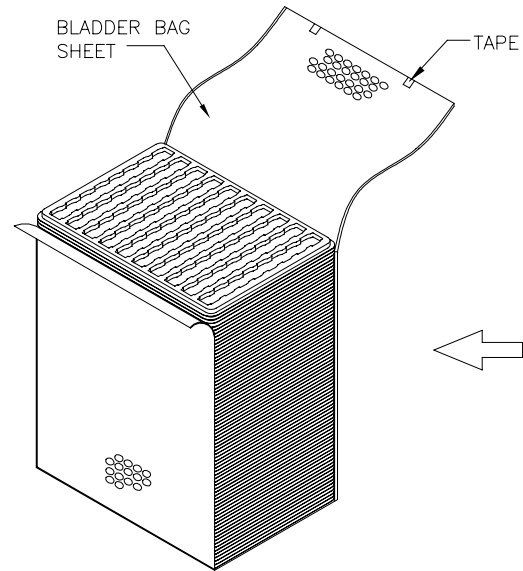
2. QUANTITY:

2.1 PRIMARY PACKING: 80 PCS/TRAY SOFT TRAY

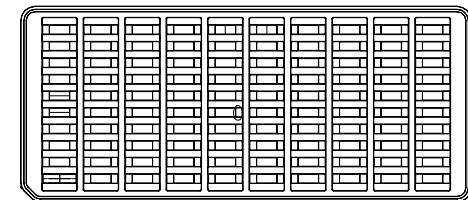
100 PCS/TRAY HARD TRAY

2.2 SECONDARY PACKING: 50 TRAY/CARTON(4,000PCS)

20 TRAY/CARTON(2,000PCS)



SOFT TRAY



HARD TRAY

THIS DRAWING IS A CONTROLLED DOCUMENT.

DIMENSIONS:

MM



TOLERANCES UNLESS OTHERWISE SPECIFIED:

0 PLC ± -

1 PLC ± -

2 PLC ± -

3 PLC ± -

4 PLC ± -

ANGLES ± -

MATERIAL

FINISH

DWN

CHK

APVD

PRODUCT SPEC

APPLICATION SPEC

WEIGHT

CUSTOMER DRAWING



TE Connectivity

NAME

BATTERY HOLDER, H=18.5mm, V/T

SIZE

CAGE CODE

DRAWING NO

RESTRICTED TO

A3

00779

C=1775485

SCALE

SHEET

4 OF 4

REV B2

Mouser Electronics

Authorized Distributor

Click to View Pricing, Inventory, Delivery & Lifecycle Information:

[TE Connectivity:](#)

[2-1775485-1](#)