

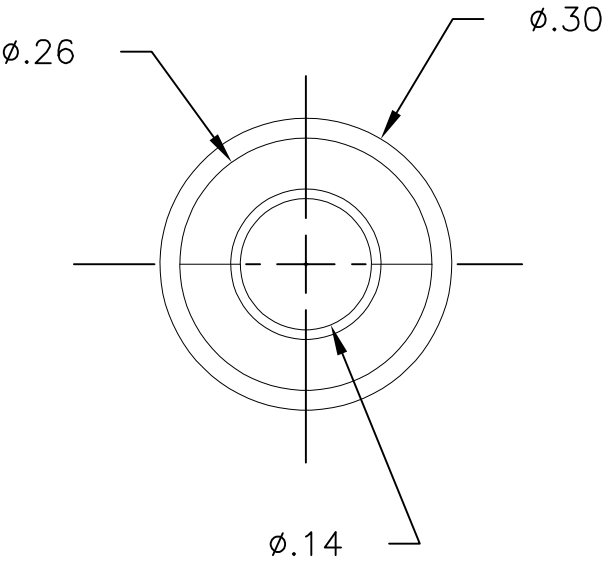
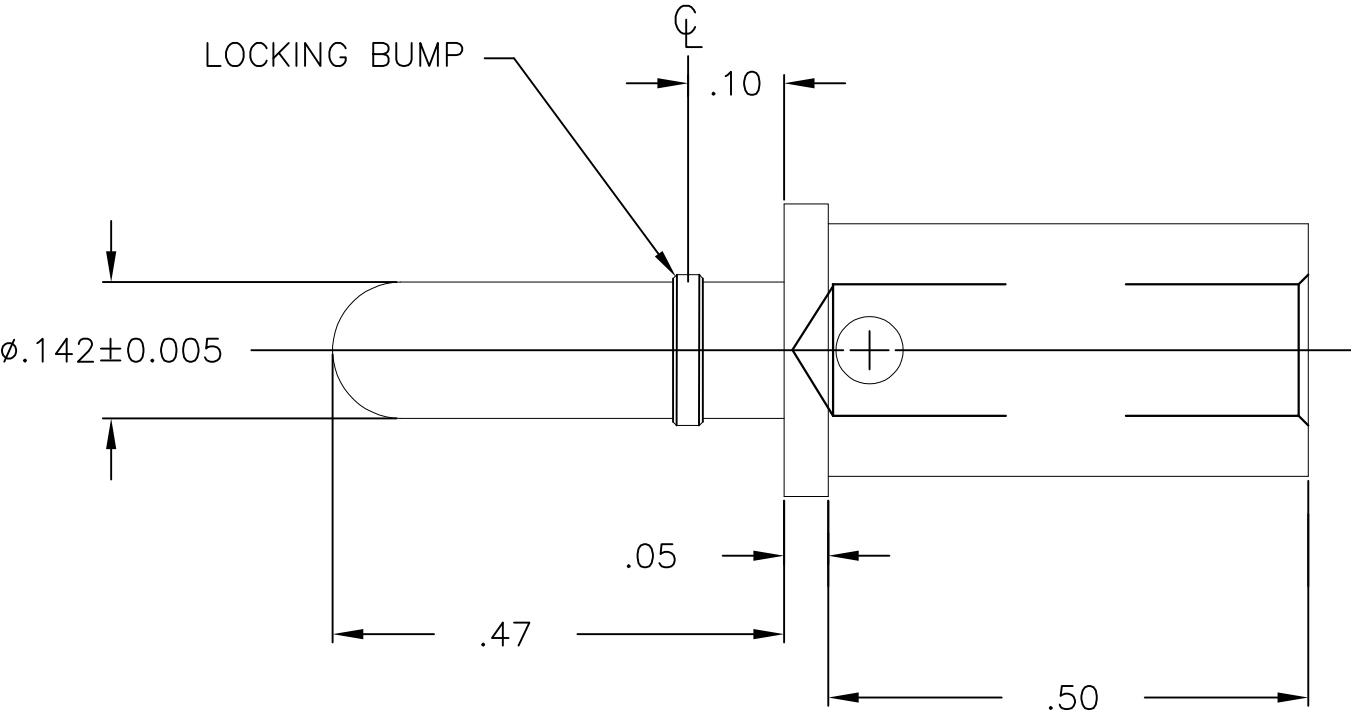
4

3

2


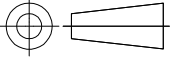
1

LOC	DIST	REVISIONS				
GP	00	P	LTR	DESCRIPTION	DATE	APVD
			C	REV PER ECO-11-007264	14APR2011	DO



5. TOOLING REQUIRED FOR CRIMP CONTACTS SIZE #8 & #10:  
CRIMP TOOL PART No. M22520/23-01  
CRIMP DIE ASSEMBLY PART No. M22520/23-02  
LOCATOR PART No. M22520/23-09
4. FINISH: SILVER PLATE .00200 MIN THK. OVER  
NICKEL .000040 MIN THK.
3. MATERIAL: COPPER ALLOY
2. ITEMS PROVIDED TO THIS SPECIFICATION TO BE IDENTIFIED  
ON THE CONTAINER WITH THE FOLLOWING INFORMATION:  
PART NUMBER AND DATE CODE OF MANUFACTURE.
1. PART NUMBER CHANGES AND/OR DESIGN CHANGES AFFECTING  
ITEM INTERCHANGEABILITY REQUIRE PRIOR ELCON APPROVAL  
AND AUTHORIZATION BY REVISION TO THIS DRAWING.

1766161-1  
PART NUMBER

THIS DRAWING IS A CONTROLLED DOCUMENT.		DWN LOVATO/GRZYBOWSKI 10JAN2011	 TE Connectivity			
DIMENSIONS: INCHES		CHK D.ORRIS 10JAN2011				
	TOLERANCES UNLESS OTHERWISE SPECIFIED:	APVD D.ORRIS 10JAN2011	NAME PIN CONTACT SIZE No.8 SIZE No.10 CRIMP BARREL LOCKING ICON			
	0 PLC ± - 1 PLC ± - 2 PLC ± - 3 PLC ± .020 4 PLC ± - ANGLES ± .5	PRODUCT SPEC -	SIZE A3			
	MATERIAL -	APPLICATION SPEC -	CAGE CODE 00779			
FINISH -		WEIGHT -	DRAWING NO C-1766161			
		CUSTOMER DRAWING	SCALE 5:1		SHEET 1 OF 1	REV C

# Mouser Electronics

Authorized Distributor

Click to View Pricing, Inventory, Delivery & Lifecycle Information:

[TE Connectivity:](#)

[1766161-1](#)