

REVISIONS					
P	LTR	DESCRIPTION	DATE	DWN	APVD
	J	REVISED PER ECR-16-005905	30MAY16	DZ	SL

NOTES:

1. MATERIAL:
HOUSING: LCP WITH 30% GF, UL94 V-0, BLACK COLOR.
CONTACTS: PHOSPHOR BRONZE.
PEGS: BRASS.
2. FINISH:
CONTACTS: (SEE TABLE) GOLD PLATED ON CONTACT AREA, GOLD FLASH ON SOLDER AREA, WITH ENTIRE CONTACT UNDERPLATED 1.27µm [50µ"] MIN. NICKEL.
PEGS: 3.048µm [120µ"] MIN. MATTE-TIN OVER 1.27µm [50µ"] MIN. NICKEL.
3. REFLOW SOLDER CAPABLE TO 260° PER TEC-109-201, CONDITION B.

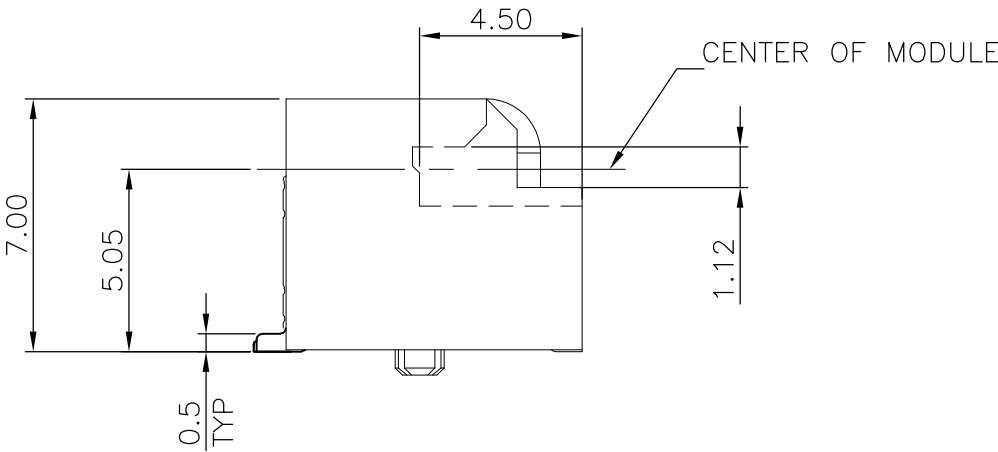
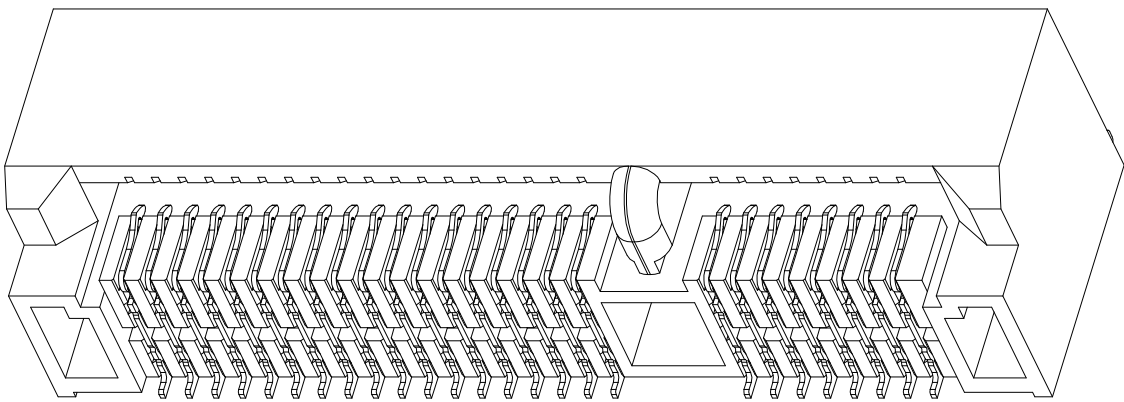
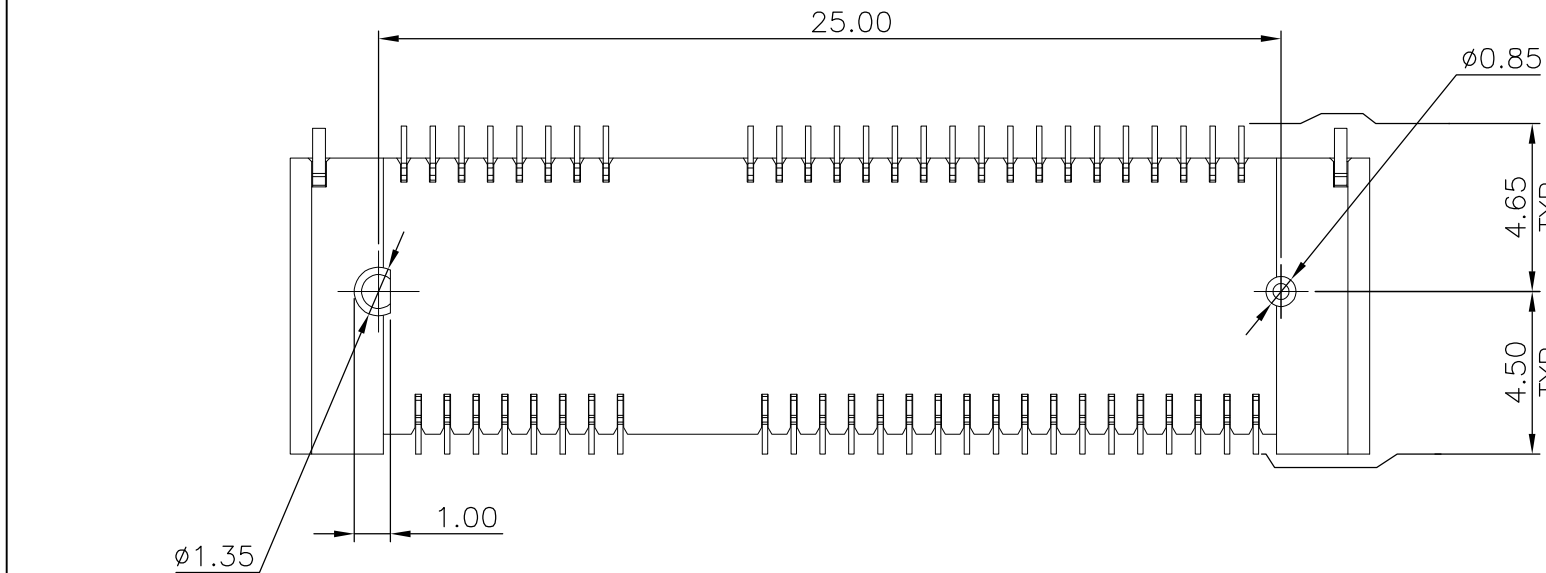
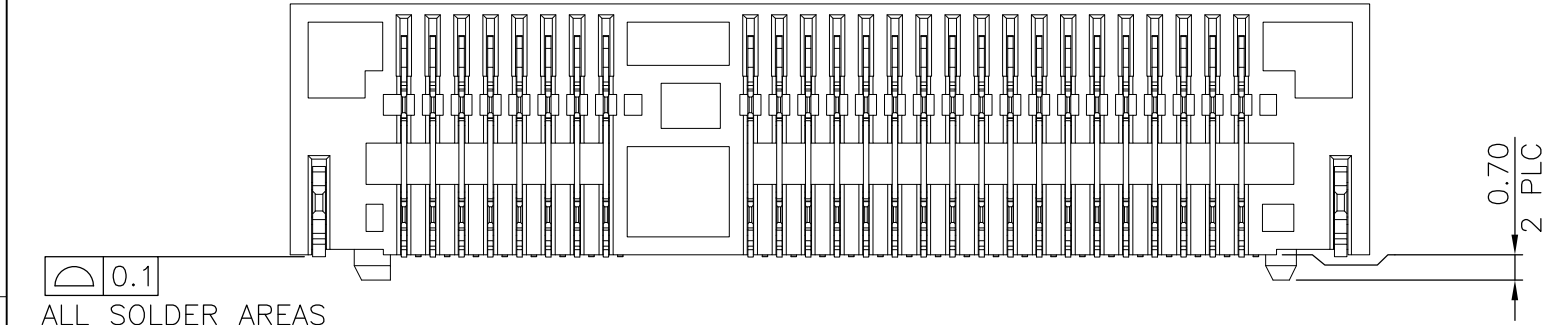
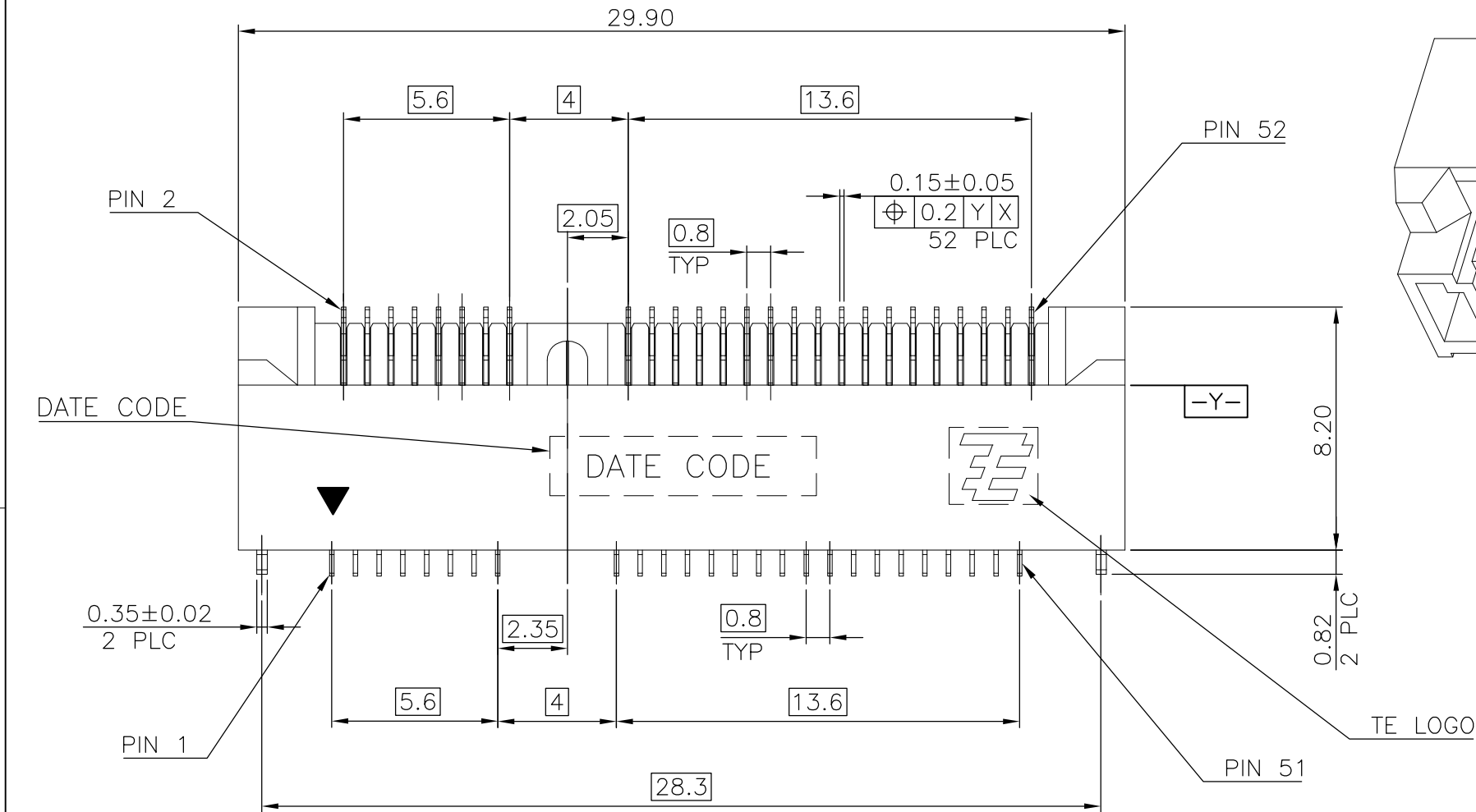
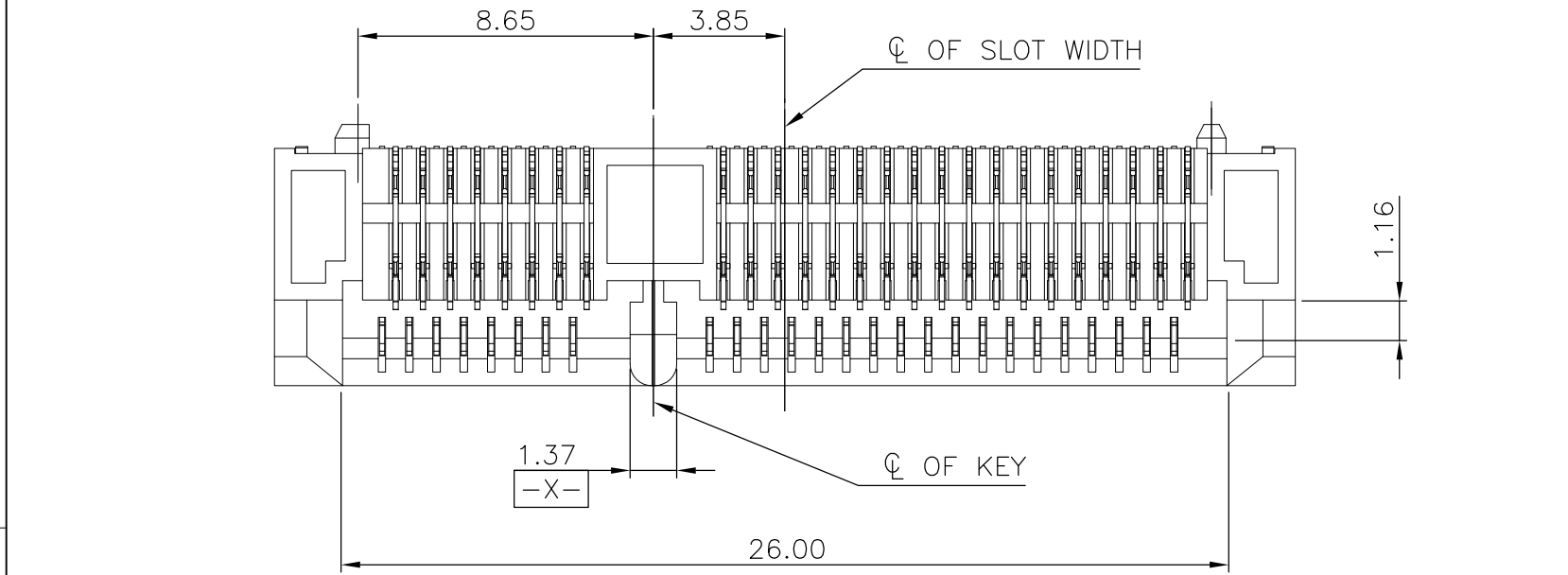
PCI-E MINI CARD CONNECTOR
SIGNAL ASSIGNMENTS

mSATA CONNECTOR
SIGNAL ASSIGNMENTS

PIN#	NAME	PIN#	NAME
51	Reserved	52	+3.3Vaux
49	Reserved	50	GND
47	Reserved	48	+1.5V
45	Reserved	46	LED_WPAN#
43	GND	44	LED_WLAN#
41	+3.3Vaux	42	LED_WWAN#
39	+3.3Vaux	40	GND
37	GND	38	USB_D+
35	GND	36	USB_D-
33	PETp0	34	GND
31	PETn0	32	SMB_DATA
29	GND	30	SMB_CLK
27	GND	28	+1.5V
25	PERp0	26	GND
23	PERn0	24	+3.3Vaux
21	GND	22	PERST#
19	Reserved* (UIM_C4)	20	W_DISABLE#
17	Reserved* (UIM_C8)	18	GND
MECHANICAL KEY			
15	GND	16	UIM_VPP
13	REFCLK+	14	UIM_RESET
11	REFCLK-	12	UIM_CLK
9	GND	10	UIM_DATA
7	CLKREQ#	8	UIM_PWR
5	COEX2	6	1.5V
3	COEX1	4	GND
1	WAKE#	2	3.3Vaux

PIN#	NAME	PIN#	NAME
51	Presence Detection	52	+3.3V
49	DA/DSS	50	GND
47	Vendor	48	+1.5V
45	Vendor	46	Reserved
43	No Connect	44	Reserved
41	+3.3V	42	Reserved
39	+3.3V	40	GND
37	GND	38	Reserved
35	GND	36	Reserved
33	+A	34	GND
31	-A	32	Two Wire Interface
29	GND	30	Two Wire Interface
27	GND	28	+1.5V
25	-B	26	GND
23	+B	24	+3.3V
21	GND	22	Reserved
19	Reserved	20	Reserved
17	Reserved	18	GND
MECHANICAL KEY			
15	GND	16	Reserved
13	Reserved	14	Reserved
11	Reserved	12	Reserved
9	GND	10	Reserved
7	Reserved	8	Reserved
5	Reserved	6	+1.5V
3	Reserved	4	GND
1	Reserved	2	+3.3V

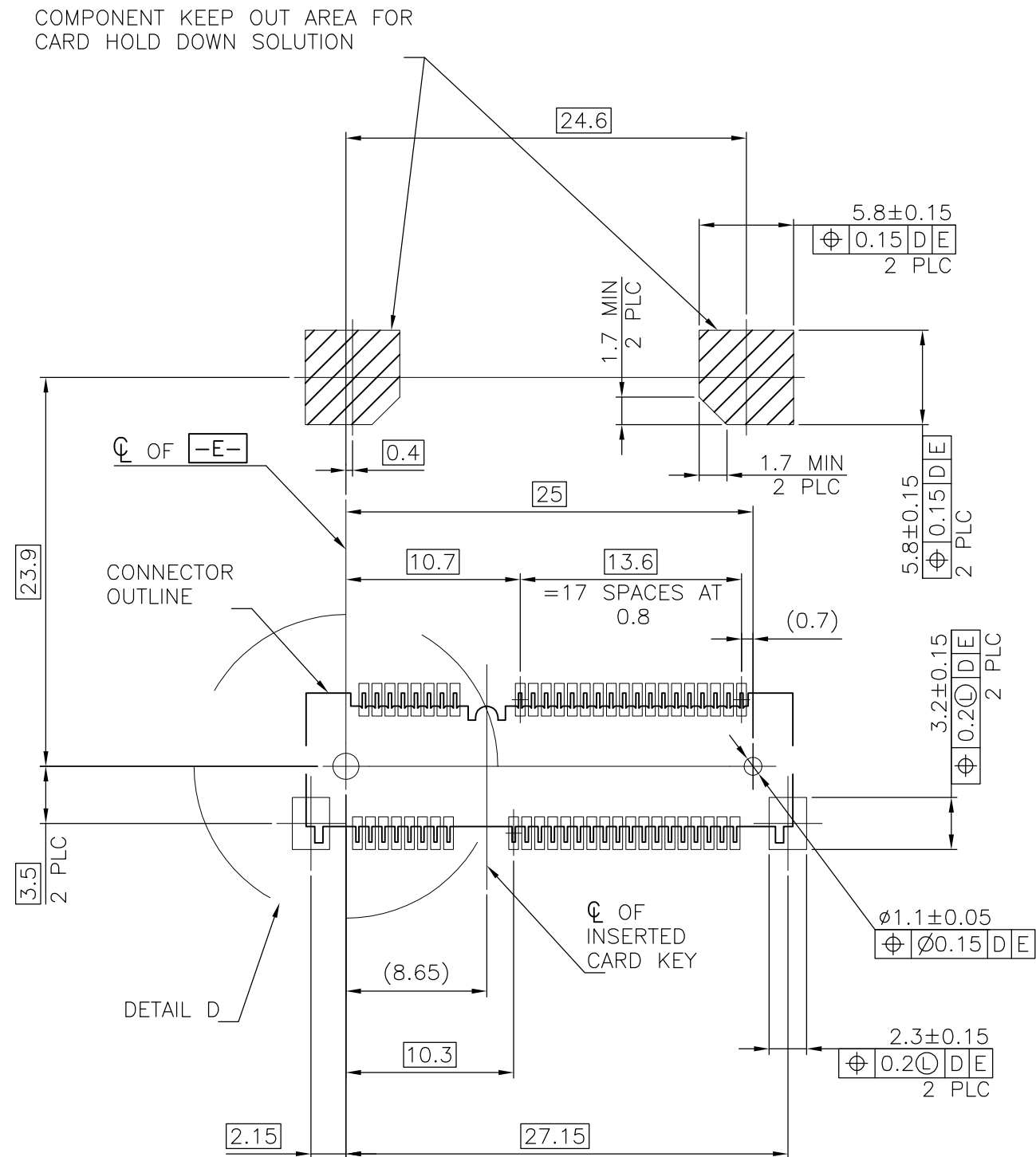
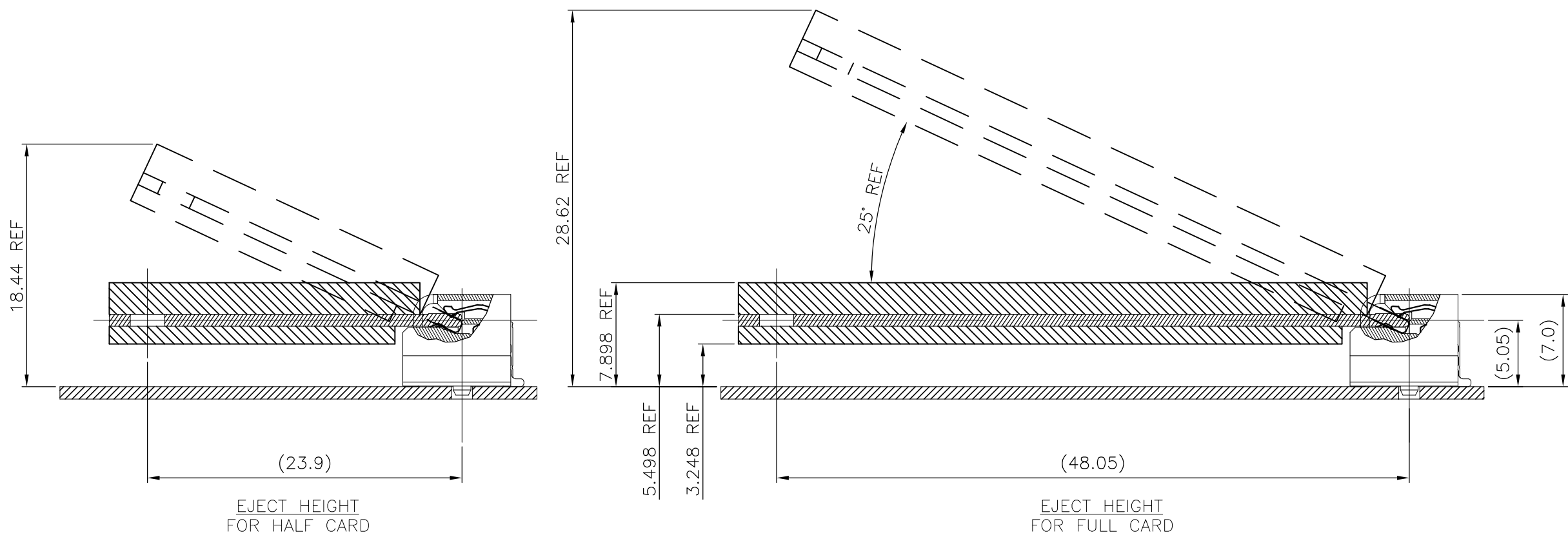
* Reserved for future UIM interface (if needed)



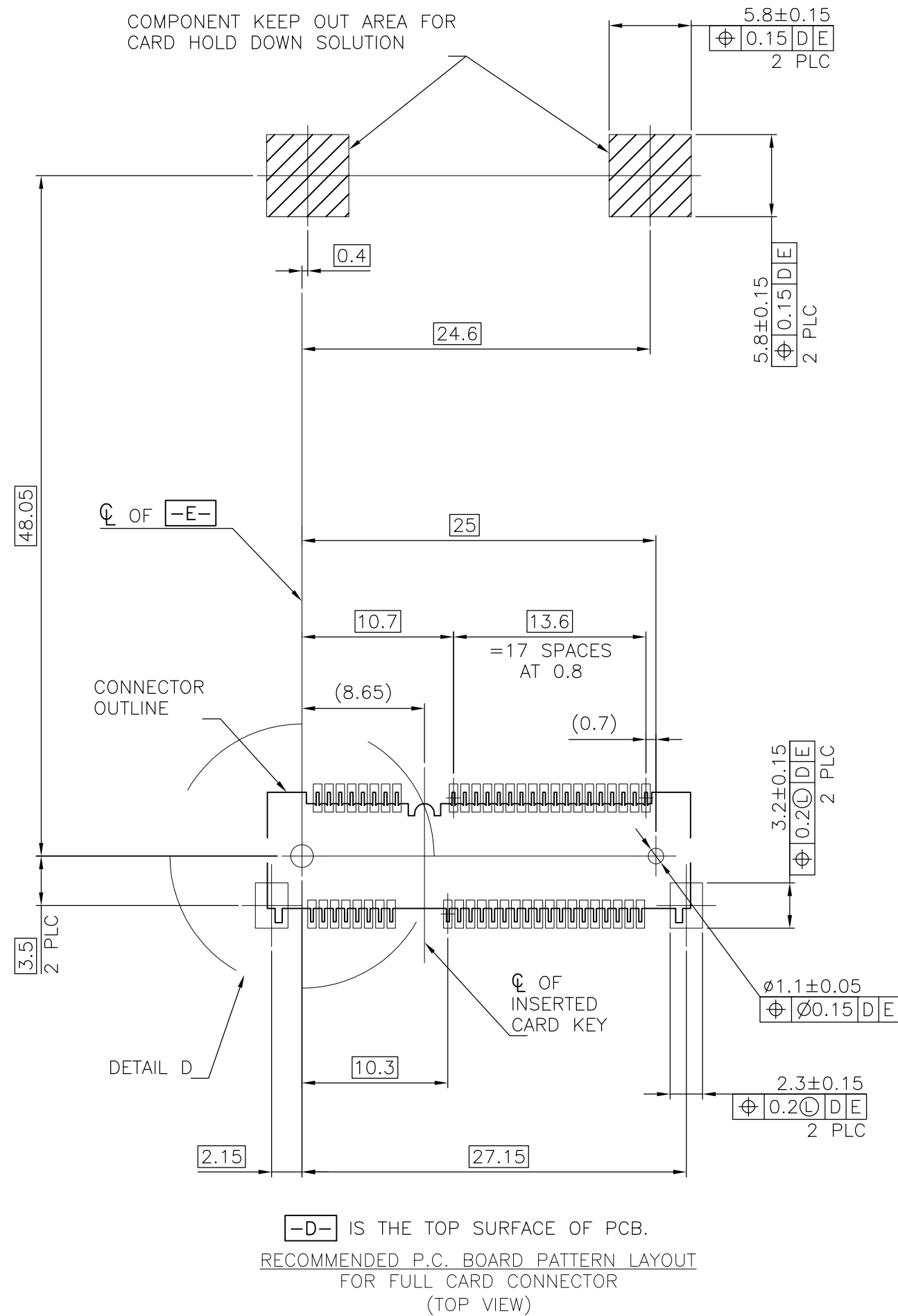
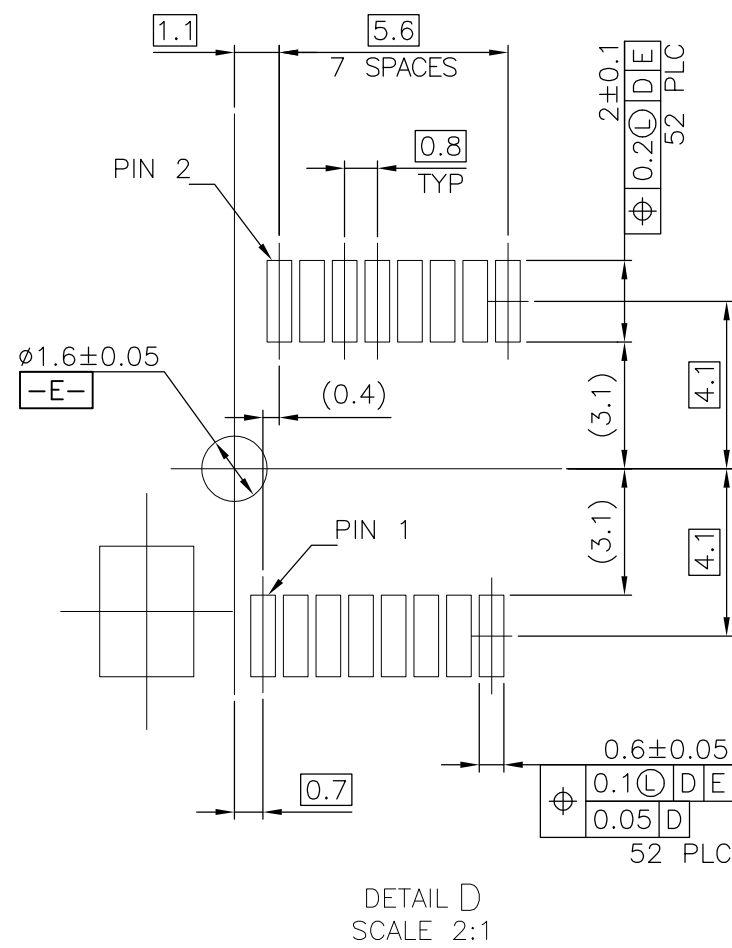
OBSOLETE	0.762µm [30µ"]	1759547-4
OBSOLETE	0.381µm [15µ"]	1759547-3
OBSOLETE	0.254µm [10µ"]	1759547-2
	GOLD FLASH	1759547-1
	MIN. GOLD THICKNESS	PART NUMBER

THIS DRAWING IS A CONTROLLED DOCUMENT.		DWN A. WU 01MAR2011	<div><div>TE Connectivity</div><div>2 IN 1 mSATA & PCI EXPRESS MINI CARD CONNECTOR, 7 MM HEIGHT</div></div>			
DIMENSIONS: mm		CHK S. CHIEN 01MAR2011				
		APVD W. KODAMA 01MAR2011	NAME		SIZE	
		PRODUCT SPEC 108-99102	APPLICATION SPEC		CAGE CODE	DRAWING NO
MATERIAL SEE NOTE		FINISH SEE NOTE	WEIGHT 2.28 GRAMS		A2 00779	
		CUSTOMER DRAWING		SCALE -		SHEET 1 of 5
				REV J		

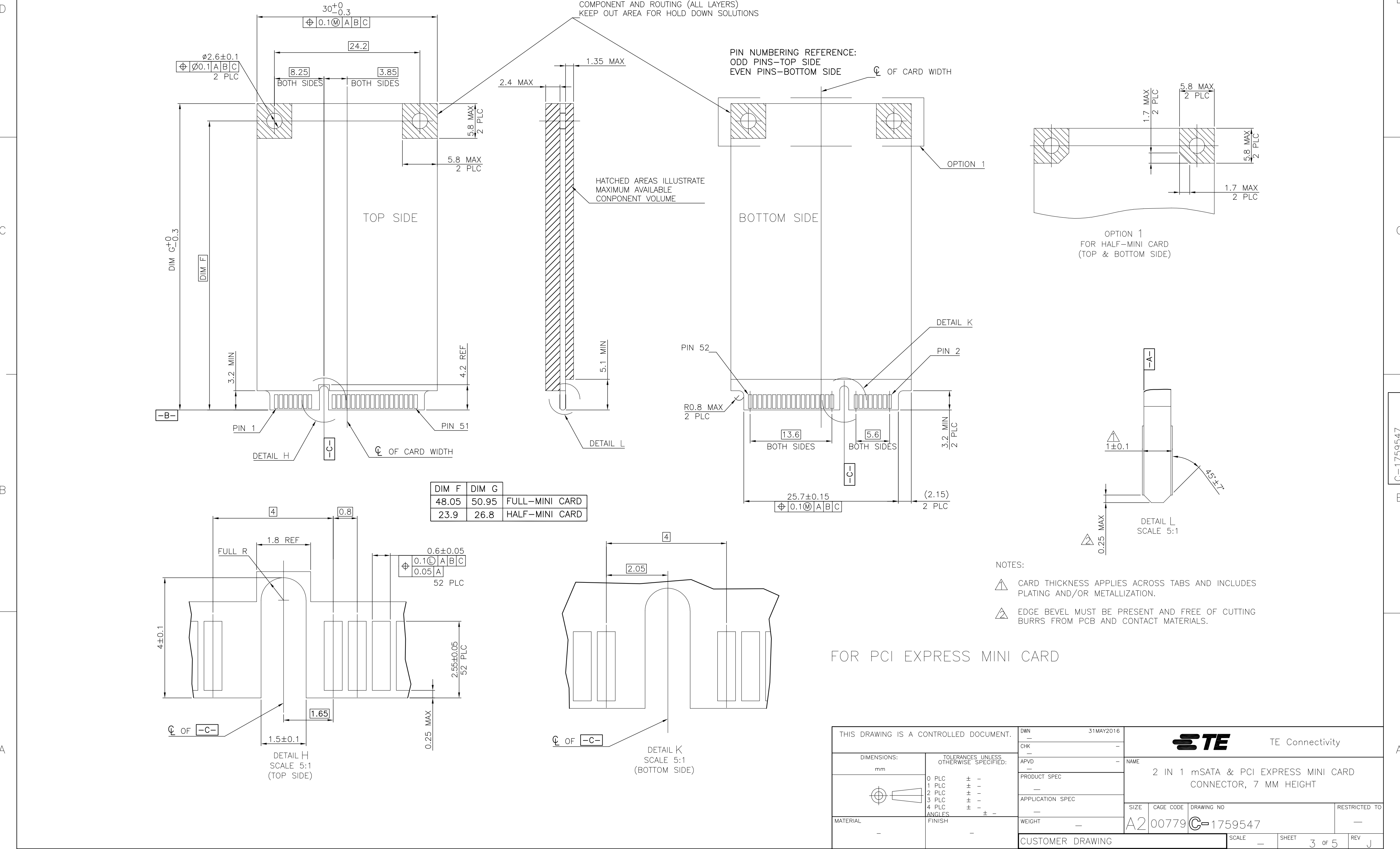
REVISIONS					
P	LTR	DESCRIPTION	DATE	DWN	APVD
	J	SEE SHEET 1	—	—	—

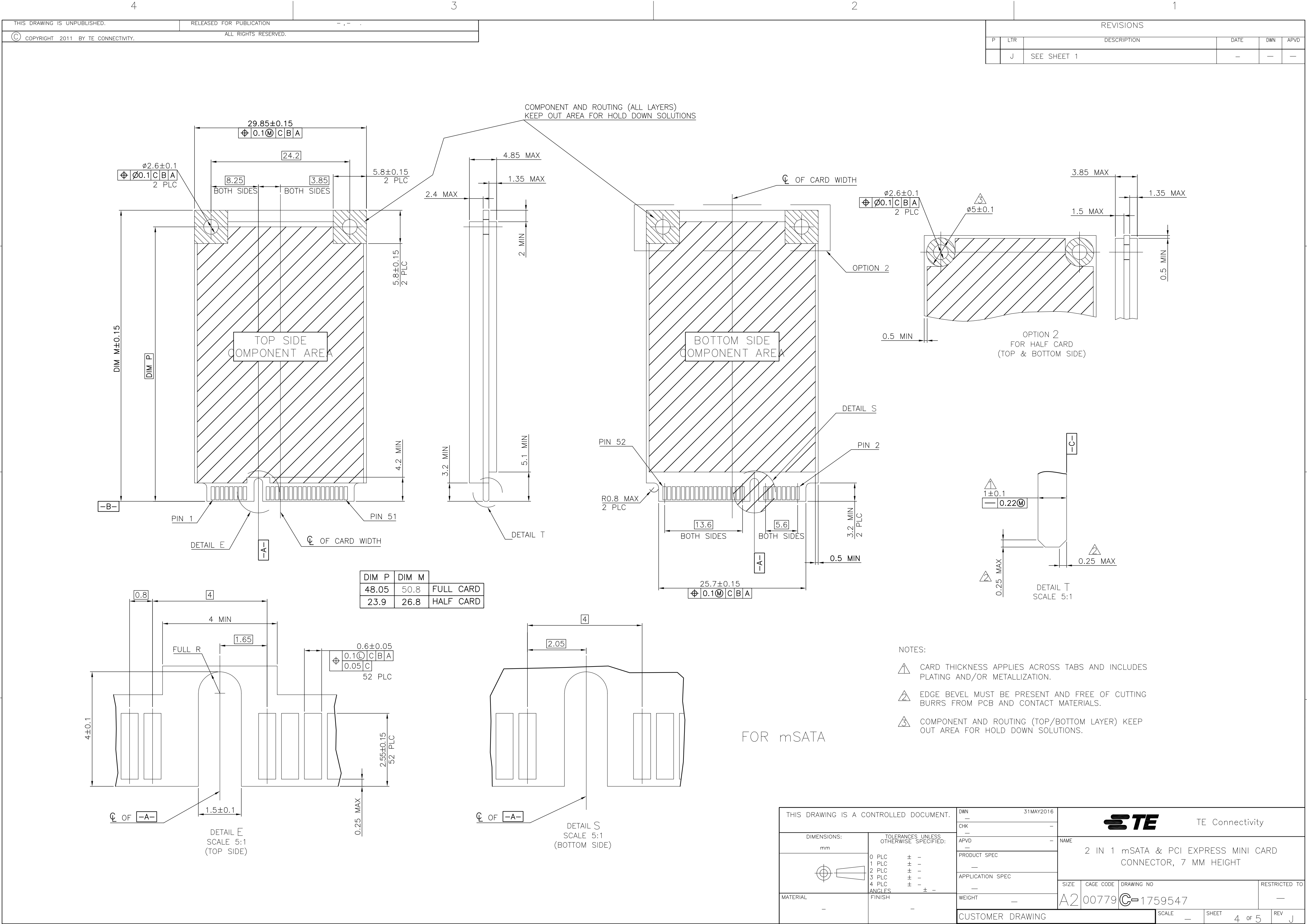


-D- IS THE TOP SURFACE OF PCB.
RECOMMENDED P.C. BOARD PATTERN LAYOUT
FOR HALF CARD CONNECTOR
(TOP VIEW)



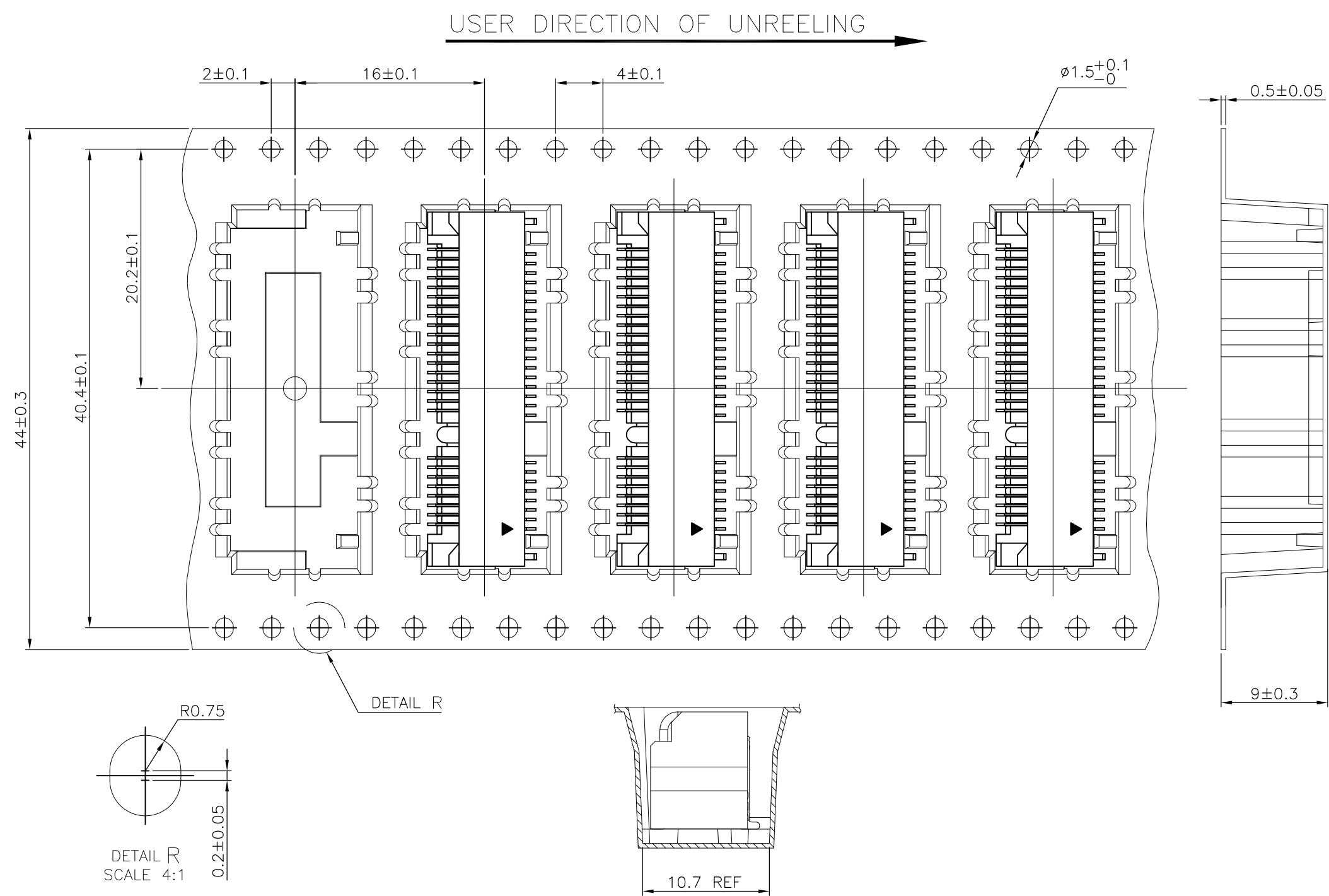
THIS DRAWING IS A CONTROLLED DOCUMENT.		DWN	31MAY2016	TE Connectivity	
		CHK	—		
DIMENSIONS:		APVD	—	NAME	
mm		PRODUCT SPEC	—		
		APPLICATION SPEC	—	SIZE	
		WEIGHT	—	CAGE CODE	
MATERIAL		FINISH	—	DRAWING NO	
		CUSTOMER DRAWING	—	RESTRICTED TO	
		SCALE	—	SHEET	
			2 of 5	REV	
			J		







The diagram illustrates the packaging process for a tape and reel component. It shows three stages of assembly:

- TAPE & REEL:** The initial component, a reel of tape.
- DESICCANT** and **BAG:** The component is placed inside a bag, and a desiccant packet is added for protection.
- E.P.E** and **VOID FILLER:** The bagged component is placed in a container, surrounded by expanded polystyrene (E.P.E) and void filler for cushioning.



10.25 Kg	5.73 Kg	450	6	2700
GROSS WEIGHT	NET WEIGHT	PCS/TAPE	REELS/BOX	PCS/BOX

THIS DRAWING IS A CONTROLLED DOCUMENT.		DWN — 31MAY2016		 TE Connectivity	
		CHK — APVD —			
DIMENSIONS: mm		TOLERANCES UNLESS OTHERWISE SPECIFIED:		NAME 2 IN 1 mSATA & PCI EXPRESS MINI CARD CONNECTOR, 7 MM HEIGHT	
		0 PLC ± -			
		1 PLC ± -			
		2 PLC ± -			
		3 PLC ± -		PRODUCT SPEC —	
		4 PLC ± -		APPLICATION SPEC —	
MATERIAL —		FINISH —		SIZE A2	CAGE CODE 00779
		WEIGHT —		DRAWING NO C=1759547	
CUSTOMER DRAWING				SCALE —	SHEET 5 of 5
				REV J	RESTRICTED TO —

Mouser Electronics

Authorized Distributor

Click to View Pricing, Inventory, Delivery & Lifecycle Information:

[TE Connectivity:](#)

[1759547-1](#)