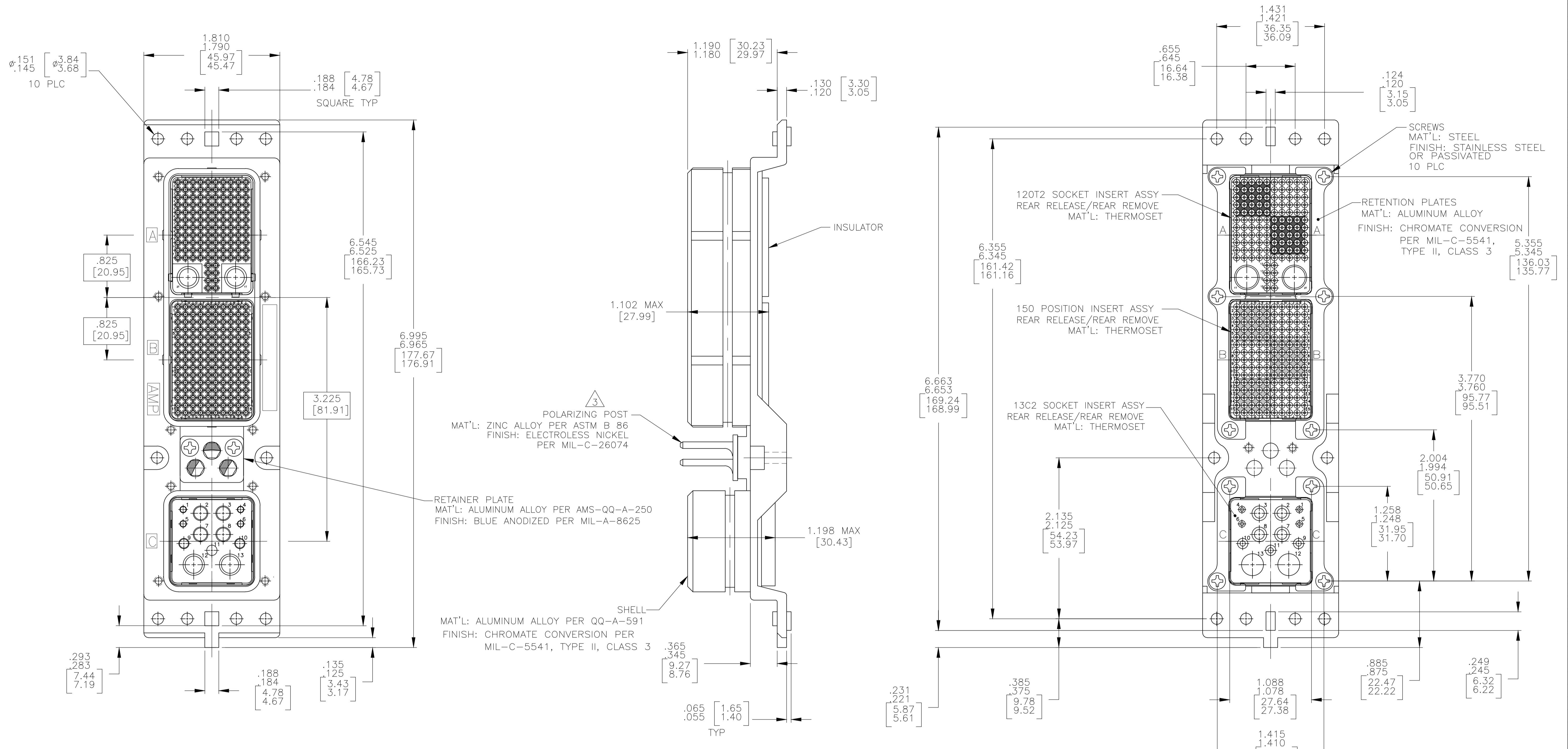


REVISONS		DATE	BY	APPV
D	REVISED PER ECO-17-018523	19JAN2018	PHM	CT



- CONNECTOR DIMENSIONS ARE PER ARINC 600 SPECIFICATION.
- CONNECTOR IS SUPPLIED WITH CONTACTS (PER TABLE), NOT INSTALLED. 1757876-1 & -2 ONLY
- KEYING SHOWN IN POSITION "12" FOR REFERENCE ONLY. SEE TABLE FOR KEYING POSITION. FOR POSITION "00" KEYING SHIPPED UNASSEMBLED.
- CONNECTOR IS SUPPLIED WITH A DUST COVER INSTALLED (NOT SHOWN).
- ALL INSERTS ARE SEALED ON 1757876-3.

KEYING POSITION	CONTACTS INCLUDED NOT INSTALLED	PART NUMBER
"12"	NO CONTACTS SUPPLIED	1757876-3
"12"	MODULE A 208262-3 (SIZE 22 PIN; QTY=118) 1757891-1 (SIZE 8 COAX SOCKET FOR BMS 13-65 OF CABLE; QTY = 2) MODULE B 208262-3 (SIZE 22 PIN; QTY=150) MODULE C 208267-2 (SIZE 20 SOCKET; QTY=4) 208270-2 (SIZE 16 SOCKET; QTY=3) 208273-2 (SIZE 12 SOCKET; QTY=4) 1757892-1 (SIZE 5 COAX SOCKET FOR BMS 13-65 OF CABLE; QTY = 2)	1757876-2
"12"	MODULE A 208262-3 (SIZE 22 PIN; QTY=118) 1218821-1 (SIZE 8 COAX SOCKET FOR RG400 CABLE; QTY = 2) MODULE B 208262-3 (SIZE 22 PIN; QTY=150) MODULE C 208267-2 (SIZE 20 SOCKET; QTY=4) 208270-2 (SIZE 16 SOCKET; QTY=3) 208273-2 (SIZE 12 SOCKET; QTY=4) 225791-2 (SIZE 5 COAX SOCKET FOR RG400 CABLE; QTY = 2)	1757876-1

THIS DRAWING IS A CONTROLLED DOCUMENT.

DIMENSIONS: INCHES

TOLERANCES UNLESS OTHERWISE SPECIFIED:

0 PLC	± .005
1 PLC	± .005
2 PLC	± .005
3 PLC	± .005
4 PLC	± .005
ANGLES	± .005
FINISH	SEE TABLE

THIS DRAWING IS A CONTROLLED DOCUMENT. DWN: C.C.THOMAS 6-10-05. CHK: K.HOGAN 6-10-05. APPV: K.HOGAN 6-10-05. NAME: PLUG ASSY, SIZE 2, ARINC 600 (120T2/150/13C2). SIZE: A1. CAGE CODE: 00779. DRAWING NO: 1757876. WEIGHT: -. RESTRICTED TO: -. CUSTOMER DRAWING. SCALE: 3:2. SHEET: 1 OF 1. REV: D.

STE TE Connectivity

Mouser Electronics

Authorized Distributor

Click to View Pricing, Inventory, Delivery & Lifecycle Information:

[TE Connectivity:](#)

[1757876-1](#)