

| | | | | | | | | | | | | | | | | | | | | | | | | | | | | | | | | | | | | | | | | | | | | | | | | | | | | | | | | | | | | | | | | | | | | | |
|----------------------------------------------------------------------------------------------------------------------------------|--|--|--|--|--|--|--|--|--|--------------------------|--|--|--|--|--|--|--|--|--|------------|--|--|--|--|--|--|--|--|--|-------------|--|--|--|--|--|--|--|--|--|---------|--|--|--|--|--|--|--|--|--|------|--|--|--|--|--|--|--|--|--|------|--|--|--|--|--|--|--|--|--|
| 4 | | | | | | | | | | 3 | | | | | | | | | | 2 | | | | | | | | | | 1 | | | | | | | | | | | | | | | | | | | | | | | | | | | | | | | | | | | | | | | |
| THIS DRAWING IS UNPUBLISHED. | | | | | | | | | | RELEASED FOR PUBLICATION | | | | | | | | | | SEP. 2005. | | | | | | | | | | | | | | | | | | | | | | | | | | | | | | | | | | | | | | | | | | | | | | | | | |
| © COPYRIGHT 2005 By - | | | | | | | | | | ALL RIGHTS RESERVED. | | | | | | | | | | | | | | | | | | | | | | | | | | | | | | | | | | | | | | | | | | | | | | | | | | | | | | | | | | | |
| LOC | | | | | | | | | | DIST | | | | | | | | | | REVISIONS | | | | | | | | | | | | | | | | | | | | | | | | | | | | | | | | | | | | | | | | | | | | | | | | | |
| J | | | | | | | | | | P | | | | | | | | | | LTR | | | | | | | | | | DESCRIPTION | | | | | | | | | | DATE | | | | | | | | | | DWN | | | | | | | | | | APVD | | | | | | | | | |
| F8 | | | | | | | | | | | | | | | | | | | | | | | | | | | | | | | | | | | | | | | | 04MAR19 | | | | | | | | | | T.ZH | | | | | | | | | | S.L | | | | | | | | | |
| NOTICE: THIS COMMUNICATION INCLUDES TE CONNECTIVITY CONFIDENTIAL OR PROPRIETARY INFORMATION THAT MAY ALSO BE LEGALLY PRIVILEGED. | | | | | | | | | | | | | | | | | | | | | | | | | | | | | | | | | | | | | | | | | | | | | | | | | | | | | | | | | | | | | | | | | | | | | |

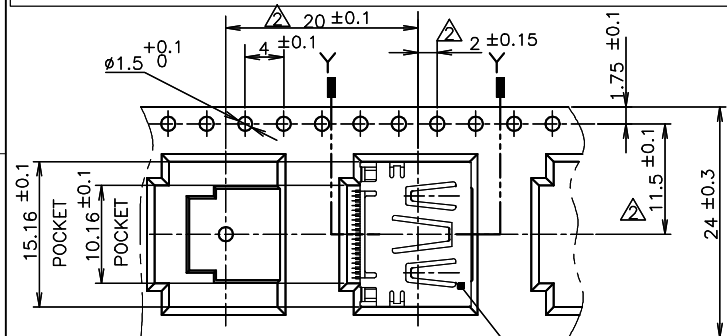
| | | | | | | | | | | | | | | | | |
|---|---------------|------------------------|-------------------------------------|-------|---------------------|-------|-------|-------|-------|-------|-------|--------------|-------------------------------------|--------------------------------------|----------------------------|----|
| D | AVAILABLE | WITHOUT P/N | Au 0.1um MIN OVER PdNi 0.2um MIN | 6.28 | - | 0.5 | 10.05 | - | - | 2.2 | 1.8 | WITHOUT BOSS | EMBOSS PACKING (SEE SHEET 2) | WITHOUT FLANGE TYPE (SEE SHEET 8) | 1747981-3 | F7 |
| | AVAILABLE | WITHOUT P/N | Au 0.76um | 16.3 | M3 x 0.5 | 0.5 | 10.05 | 10.95 | 7.98 | 2.2 | 1.8 | WITHOUT BOSS | EMBOSS PACKING (SEE SHEET 3) | WITH FLANGE TYPE (SEE SHEET 7) | 1-1747981-9 | |
| | AVAILABLE | WITHOUT P/N | Au 0.1um MIN OVER PdNi 0.2um MIN | 6.28 | - | 0.5 | 10.55 | - | - | 1.1 | 1.1 | WITHOUT BOSS | EMBOSS PACKING (SEE SHEET 2) | WITHOUT FLANGE TYPE (SEE SHEET 6) | 9-1747981-2 | |
| | AVAILABLE | WITH P/N | Au 0.1um MIN OVER PdNi 0.2um MIN | - | M3 x 0.5 | 1.0 | 10.55 | 12.75 | 10.08 | 2.2 | 1.8 | WITH BOSS | SOFT TRAY PACKING (SEE SHEET 4) | WITH FLANGE TYPE (SEE SHEET 7) | 9-1747981-1 | |
| | AVAILABLE | WITHOUT P/N | Au 0.1um MIN OVER PdNi 0.2um MIN | 16.3 | M3 x 0.5 | 0.5 | 10.05 | 10.95 | 7.98 | 2.2 | 1.8 | WITHOUT BOSS | EMBOSS PACKING (SEE SHEET 3) | WITH FLANGE TYPE (SEE SHEET 7) | 8-1747981-2 2-1747981-5 | |
| | AVAILABLE | WITHOUT P/N | Au 0.1um MIN OVER PdNi 0.2um MIN | - | M3 x 0.5 | 0.5 | 10.05 | 10.95 | 7.98 | 2.2 | 1.8 | WITHOUT BOSS | CLEAR TRAY PACKING (SEE SHEET 4) | WITH FLANGE TYPE (SEE SHEET 7) | 8-1747981-1 | |
| | AVAILABLE | WITHOUT P/N | Au 0.1um MIN OVER PdNi 0.2um MIN | - | M3 x 0.5 | 1.0 | 10.55 | 12.75 | 10.08 | 2.2 | 1.8 | WITH BOSS | SOFT TRAY PACKING (SEE SHEET 4) | WITH FLANGE TYPE (SEE SHEET 7) | 3-1747981-1 | |
| | NOT AVAILABLE | WITHOUT P/N | Au 0.1um MIN OVER PdNi 0.2um MIN | 16.3 | #4-40 UNC | 0.5 | 10.55 | 12.75 | 10.08 | 2.2 | 1.8 | WITH BOSS | EMBOSS PACKING (SEE SHEET 3) | WITH FLANGE TYPE (SEE SHEET 7) | 2-1747981-4 | |
| | AVAILABLE | WITHOUT P/N | Au 0.76um MIN | 16.3 | M3 x 0.5 | 1.0 | 10.55 | 12.75 | 10.08 | 2.2 | 1.8 | WITHOUT BOSS | EMBOSS PACKING (SEE SHEET 3) | WITH FLANGE TYPE (SEE SHEET 7) | 2-1747981-3 | |
| C | NOT AVAILABLE | WITHOUT P/N | Au 0.1um MIN OVER PdNi 0.2um MIN | - | #4-40 UNC | 0.5 | 10.05 | 12.75 | 10.08 | 2.2 | 1.8 | WITHOUT BOSS | HARDTRAY PACKING (-) | WITH FLANGE TYPE (SEE SHEET 7) | 2-1747981-2 | C |
| | AVAILABLE | WITHOUT P/N | Au 0.76um MIN | - | M3 x 0.5 | 1.0 | 10.55 | 12.75 | 10.08 | 2.2 | 1.8 | WITHOUT BOSS | SOFT TRAY PACKING (SEE SHEET 4) | WITH FLANGE TYPE (SEE SHEET 7) | 2-1747981-1 | |
| | AVAILABLE | WITHOUT P/N | Au 0.1um MIN OVER PdNi 0.2um MIN | - | M3 x 0.5 | 1.0 | 10.55 | 12.75 | 10.08 | 1.5 | 1.5 | WITHOUT BOSS | SOFT TRAY PACKING (SEE SHEET 4) | WITH FLANGE TYPE (SEE SHEET 7) | 1-1747981-8 | |
| | AVAILABLE | WITHOUT P/N | Au 0.1um MIN OVER PdNi 0.2um MIN | 16.3 | M3 x 0.5 | 1.0 | 10.55 | 12.75 | 10.08 | 2.2 | 1.8 | WITHOUT BOSS | EMBOSS PACKING (SEE SHEET 3) | WITH FLANGE TYPE (SEE SHEET 7) | 1-1747981-7 | |
| | AVAILABLE | WITHOUT P/N | Au 0.1um MIN OVER PdNi 0.2um MIN | - | M3 x 0.5 | 0.5 | 10.05 | 10.95 | 7.98 | 2.2 | 1.8 | WITHOUT BOSS | SOFT TRAY PACKING (SEE SHEET 5) | WITH FLANGE TYPE (SEE SHEET 7) | 1-1747981-6 | |
| | AVAILABLE | WITHOUT P/N | Au 0.1um MIN OVER PdNi 0.2um MIN | 16.3 | M3 x 0.5 | 0.5 | 10.05 | 10.95 | 7.98 | 1.5 | 1.5 | WITHOUT BOSS | EMBOSS PACKING (SEE SHEET 3) | WITH FLANGE TYPE (SEE SHEET 7) | 1-1747981-5 | |
| | AVAILABLE | WITHOUT P/N | Au 0.1um MIN OVER PdNi 0.2um MIN | - | M3 x 0.5 | 1.0 | 10.55 | 12.75 | 10.08 | 2.2 | 1.8 | WITHOUT BOSS | SOFT TRAY PACKING (SEE SHEET 4) | WITH FLANGE TYPE (SEE SHEET 7) | 1-1747981-4 | |
| B | AVAILABLE | WITHOUT P/N | Au 0.1um MIN OVER PdNi 0.2um MIN | - | #4-40 UNC | 0.5 | 10.05 | 12.75 | 10.08 | 2.2 | 1.8 | WITHOUT BOSS | SOFT TRAY PACKING (SEE SHEET 4) | WITH FLANGE TYPE (SEE SHEET 7) | 1-1747981-3 | B |
| | AVAILABLE | WITHOUT P/N | Au 0.1um MIN OVER PdNi 0.2um MIN | - | M3 x 0.5 | 0.5 | 10.05 | 10.95 | 7.98 | 1.5 | 1.5 | WITHOUT BOSS | SOFT TRAY PACKING (SEE SHEET 4) | WITH FLANGE TYPE (SEE SHEET 7) | 1-1747981-2 | |
| | AVAILABLE | WITHOUT P/N | Au 0.1um MIN OVER PdNi 0.2um MIN | - | M3 x 0.5 | 0.5 | 10.05 | 10.95 | 7.98 | 2.2 | 1.8 | WITHOUT BOSS | SOFT TRAY PACKING (SEE SHEET 4) | WITH FLANGE TYPE (SEE SHEET 7) | 1-1747981-1 | |
| | AVAILABLE | WITHOUT P/N | Au 0.1um MIN OVER PdNi 0.2um MIN | 6.28 | - | 0.5 | 10.05 | - | - | 1.5 | 1.5 | WITHOUT BOSS | EMBOSS PACKING (SEE SHEET 2) | WITHOUT FLANGE TYPE (SEE SHEET 6) | 1747981-2 | |
| | AVAILABLE | WITHOUT P/N | Au 0.1um MIN OVER PdNi 0.2um MIN | 6.28 | - | 0.5 | 10.05 | - | - | 2.2 | 1.8 | WITHOUT BOSS | EMBOSS PACKING (SEE SHEET 2) | WITHOUT FLANGE TYPE (SEE SHEET 6) | 1747981-1 | |
| | AVAILABLE | WITHOUT P/N | Au 0.76um MIN | 6.28 | - | 0.5 | 10.05 | - | - | 2.2 | 1.8 | WITHOUT BOSS | EMBOSS PACKING (SEE SHEET 2) | WITHOUT FLANGE TYPE (SEE SHEET 6) | 3-1747981-2 | |
| | TOOL STATUS | PART NUMBER MARKING | CONTACT AREA PLATING SPEC | DIM H | SCREW SIZE DIM G | DIM F | DIM E | DIM D | DIM C | DIM B | DIM A | BOSS | PACKING | CONNECTOR TYPE | PART NUMBER | |

- 1 CONTACT COPLANALITY IS 0.1 MAXIMUM.
THIS DIMENSION MEANS CENTER OF THE POCKET.
FINISH
CONTACT: CONTACT AREA J: SEE TABLE
2um MIN Sn PLATING ON SOLDERING AREA
2um MIN Ni UNDER PLATING ALL OVER
SHELL: 1um MIN Sn PLATING ALL OVER
1um MIN Ni UNDER PLATING ALL OVER
- REFER TO THE TABLE FOR BO
SCREW SIZE
PART NUMBER MAKING

| | | | | | | | | | | | | | | | | | | | | | | | | | | | | | | | | | | | | | | | | | | | | | | | | | | | | | | | | | | | |
|----------------------------------------|--|--|--|--|--|--|--|--|--|----------------------------------------|--|--|--|--|--|--|--|--|--|---------------------------|--|--|--|--|--|--|--|--|--|---------------|--|--|--|--|--|--|--|--|--|-------------|--|--|--|--|--|--|--|--|--|----------|--|--|--|--|--|--|--|--|--|
| THIS DRAWING IS A CONTROLLED DOCUMENT. | | | | | | | | | | DWN Y.HIRATA 15SEP2005 | | | | | | | | | | TE Connectivity | | | | | | | | | | | | | | | | | | | | | | | | | | | | | | | | | | | | | | | |
| CHK T.KIMURA 15SEP2005 | | | | | | | | | | NAME | | | | | | | | | | HDMI 19 POS | | | | | | | | | | | | | | | | | | | | | | | | | | | | | | | | | | | | | | | |
| APVD K.IKEGAMI 15SEP2005 | | | | | | | | | | PRODUCT SPEC | | | | | | | | | | RECEPTACLE ASSY SMT TYPE | | | | | | | | | | | | | | | | | | | | | | | | | | | | | | | | | | | | | | | |
| 108-78180-1 | | | | | | | | | | APPLICATION SPEC | | | | | | | | | | -LEAD FREE- | | | | | | | | | | | | | | | | | | | | | | | | | | | | | | | | | | | | | | | |
| DIMENSIONS: mm | | | | | | | | | | TOLERANCES UNLESS OTHERWISE SPECIFIED: | | | | | | | | | | SIZE CAGE CODE DRAWING NO | | | | | | | | | | RESTRICTED TO | | | | | | | | | | | | | | | | | | | | | | | | | | | | | |
| 0 PLC ± 0.2 | | | | | | | | | | 1 PLC ± 0.2 | | | | | | | | | | 2 PLC ± 0.2 | | | | | | | | | | 3 PLC ± 0.2 | | | | | | | | | | 4 PLC ± 0.2 | | | | | | | | | | ANGLES ± | | | | | | | | | |
| MATERIAL | | | | | | | | | | FINISH | | | | | | | | | | WEIGHT | | | | | | | | | | A300779 | | | | | | | | | | C-1747981 | | | | | | | | | | REV F8 | | | | | | | | | |
| CUSTOMER DRAWING | | | | | | | | | | SCALE NTS | | | | | | | | | | SHEET 1 of 9 | | | | | | | | | | | | | | | | | | | | | | | | | | | | | | | | | | | | | | | |

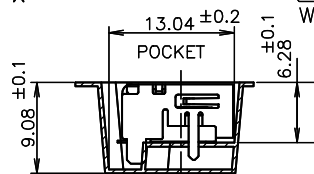
| LOC | | DIST | | REVISIONS | | | |
|-----|--|------|--|-------------|-------------|-----|------|
| J | | | | DESCRIPTION | DATE | DWN | APVD |
| | | | | P LTR | | | |
| | | | | - | SEE SHEET 1 | - | - |

NOTICE: THIS COMMUNICATION INCLUDES TE CONNECTIVITY CONFIDENTIAL OR PROPRIETARY INFORMATION THAT MAY ALSO BE LEGALLY PRIVILEGED.

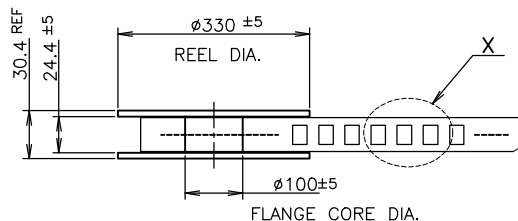


DETAIL X

CONNECTOR
WITHOUT FLANGE TYPE



SHOWN AS: 1747981-3



PLASTIC REEL

PULL OUT DIRECTION

EMBOSS REEL

WEEDING THE COVER TAPE: 300 MIN
(NOT INCLUDE EMPTINESS POCKET)

PELLING ANGLE: 165°~180°
PEELING STRENGTH: 0.1~0.7N
(300mm/min.)

400 MIN
WITHOUT CHARGE

WITH PRODUCT CHARGE

QTY:300PCS

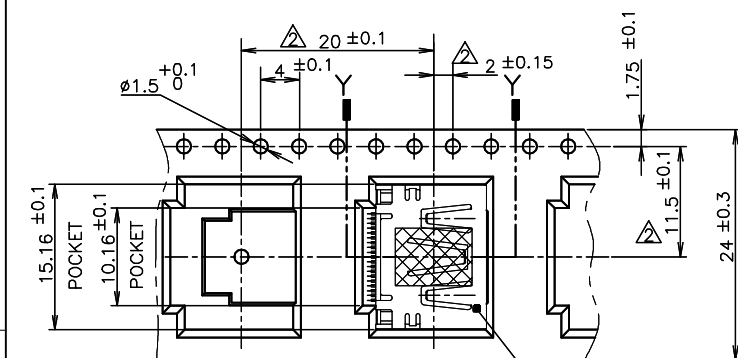
25 MIN
WITHOUT CHARGE

LABEL DESCRIPTION

TE CONNECTIVITY P/N.: 1747981-*
QTY: 300 pcs
D/C:
MADE IN CHINA

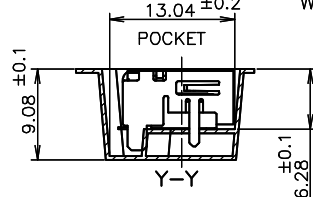
SHOWN AS:
3-1747981-2
9-1747981-2
1747981-2
1747981-1

| | | | |
|-----|---------|---------------------|-------------|
| 300 | WITHOUT | WITHOUT FLANGE TYPE | 1747981-3 |
| 300 | WITH | WITHOUT FLANGE TYPE | 3-1747981-2 |
| 300 | WITH | WITHOUT FLANGE TYPE | 9-1747981-2 |
| 300 | WITH | WITHOUT FLANGE TYPE | 1747981-2 |
| 300 | WITH | WITHOUT FLANGE TYPE | 1747981-1 |
| QTY | MYLAR | CONNECTOR TYPE | PART NUMBER |

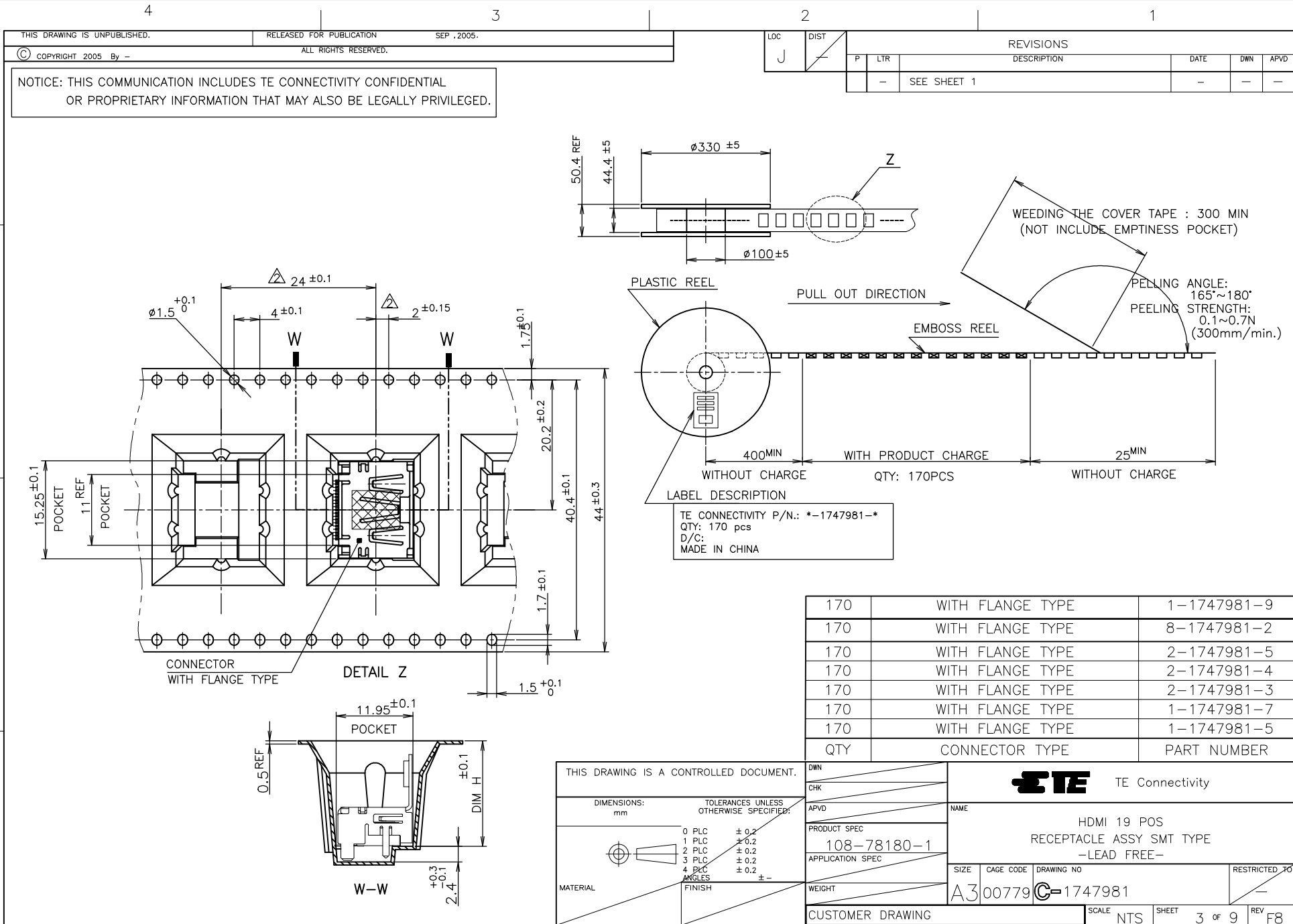


DETAIL X

CONNECTOR
WITHOUT FLANGE TYPE



| | | | |
|----------------------------------------|--|------------------|--|
| THIS DRAWING IS A CONTROLLED DOCUMENT. | | DWN | |
| CHK | | APVD | |
| DIMENSIONS: mm | | NAME | |
| TOLERANCES UNLESS OTHERWISE SPECIFIED: | | PRODUCT SPEC | |
| 0 PLC ±0.2 | | 108-78180-1 | |
| 1 PLC ±0.2 | | APPLICATION SPEC | |
| 2 PLC ±0.2 | | SIZE | |
| 3 PLC ±0.2 | | CAGE CODE | |
| 4 PLC ±0.2 | | DRAWING NO | |
| ANGLES ± | | RESTRICTED TO | |
| MATERIAL | | WEIGHT | |
| FINISH | | CUSTOMER DRAWING | |
| | | SCALE NTS | |
| | | SHEET 2 of 9 | |
| | | REV F8 | |



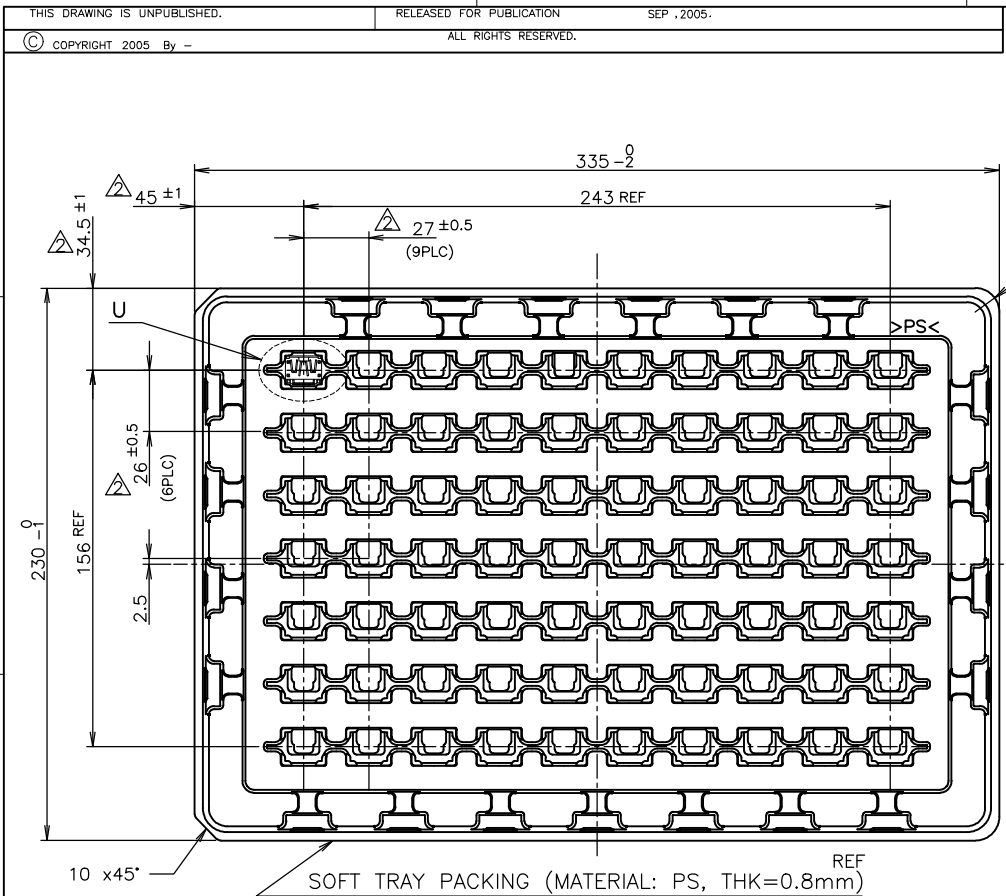
70 WITH FLANGE TYPE 1-1747981-9

D

C

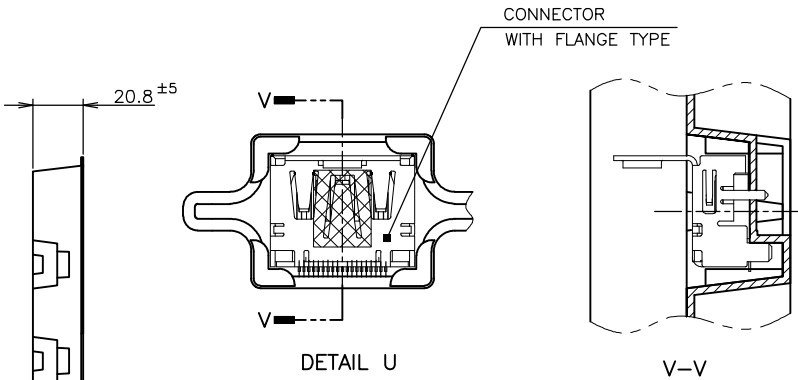
B

A



2

| LOC | | DIST | | REVISIONS | | | |
|-----|-----|-------------|--|-----------|-----|------|--|
| P | LTR | DESCRIPTION | | DATE | DWN | APVD | |
| J | | SEE SHEET 1 | | - | - | - | |

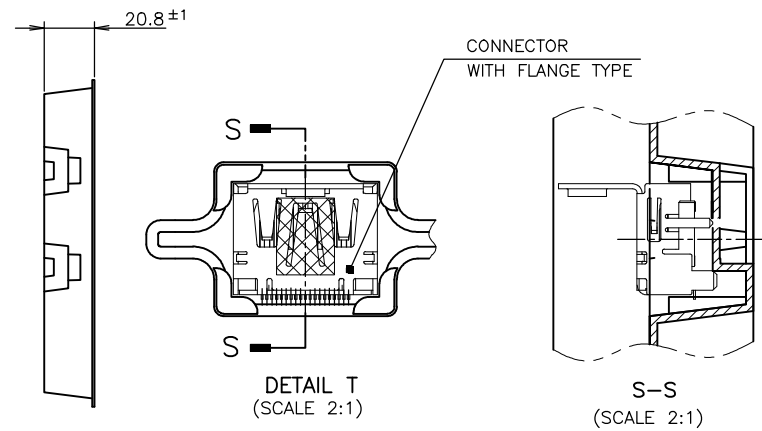
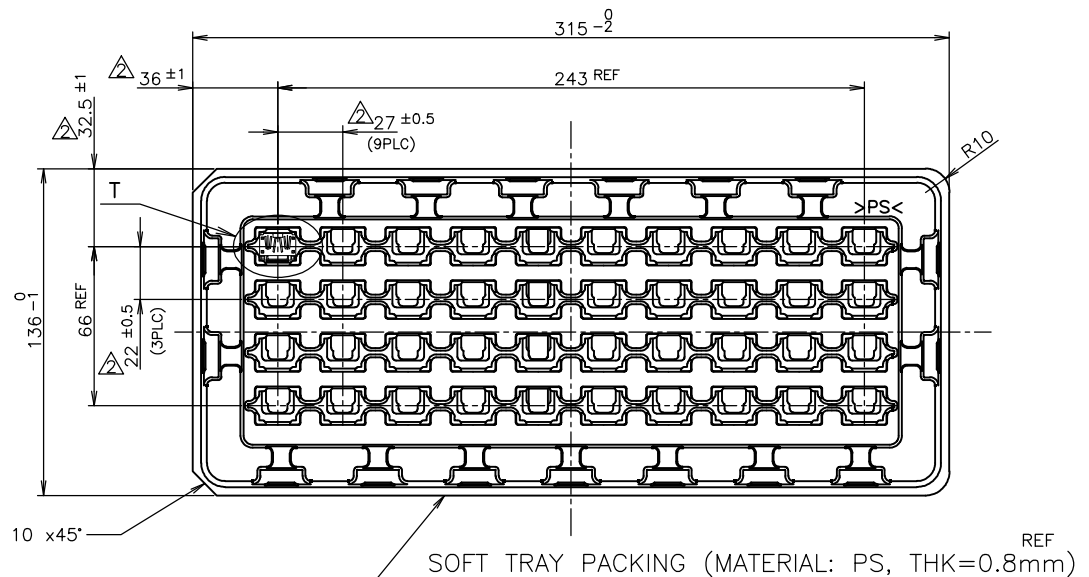


| | | |
|-----|------------------|-------------|
| 70 | WITH FLANGE TYPE | 9-1747981-1 |
| 70 | WITH FLANGE TYPE | 8-1747981-1 |
| 70 | WITH FLANGE TYPE | 3-1747981-1 |
| 70 | WITH FLANGE TYPE | 2-1747981-1 |
| 70 | WITH FLANGE TYPE | 1-1747981-8 |
| 70 | WITH FLANGE TYPE | 1-1747981-4 |
| 70 | WITH FLANGE TYPE | 1-1747981-3 |
| 70 | WITH FLANGE TYPE | 1-1747981-2 |
| 70 | WITH FLANGE TYPE | 1-1747981-1 |
| QTY | CONNECTOR TYPE | PART NUMBER |

| | | | | | |
|----------------------------------------|--|------------------|--|--------------------------|--|
| THIS DRAWING IS A CONTROLLED DOCUMENT. | | DWN | | TE Connectivity | |
| CHK | | APVD | | NAME | |
| DIMENSIONS: mm | | PRODUCT SPEC | | HDMI 19 POS | |
| TOLERANCES UNLESS OTHERWISE SPECIFIED: | | APPLICATION SPEC | | RECEPTACLE ASSY SMT TYPE | |
| 0 PLC ±0.2 | | 108-78180-1 | | -LEAD FREE- | |
| 1 PLC ±0.2 | | SIZE | | CAGE CODE | |
| 2 PLC ±0.2 | | A3 | | 00779 | |
| 3 PLC ±0.2 | | DRAWING NO | | C=1747981 | |
| 4 PLC ±0.2 | | WEIGHT | | RESTRICTED TO | |
| ANGLES ± | | CUSTOMER DRAWING | | SCALE NTS | |
| MATERIAL | | SHEET 4 of 9 | | REV F8 | |

NOTICE: THIS COMMUNICATION INCLUDES TE CONNECTIVITY CONFIDENTIAL OR PROPRIETARY INFORMATION THAT MAY ALSO BE LEGALLY PRIVILEGED.

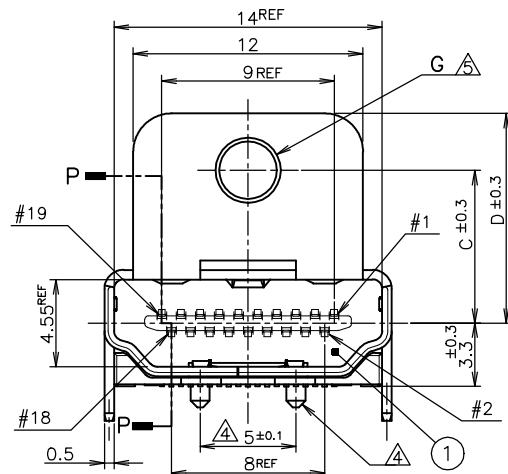
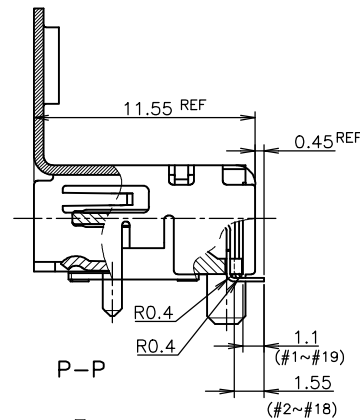
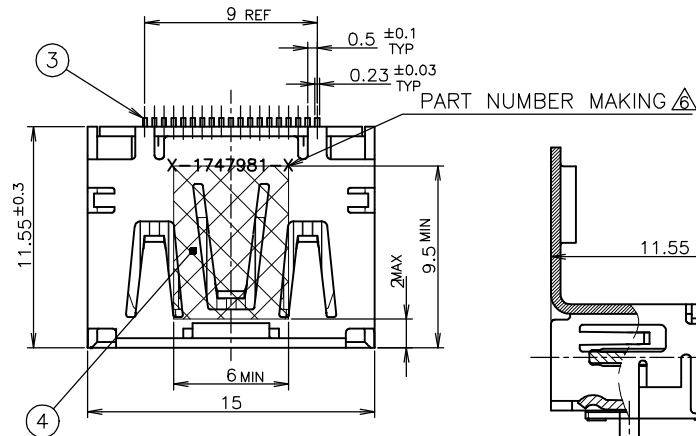
| LOC | | DIST | | REVISIONS | | | |
|-----|-----|-------------|--|-----------|-----|------|--|
| P | LTR | DESCRIPTION | | DATE | DWN | APVD | |
| J | | SEE SHEET 1 | | - | - | - | |



NOTICE: THIS COMMUNICATION INCLUDES TE CONNECTIVITY CONFIDENTIAL OR PROPRIETARY INFORMATION THAT MAY ALSO BE LEGALLY PRIVILEGED.

| | | | | | |
|----------------------------------------|--|----------------------------------------|-------|---------------------------|--|
| THIS DRAWING IS A CONTROLLED DOCUMENT. | | DWN | | TE TE Connectivity | |
| CHK | | APVD | | | |
| DIMENSIONS: mm | | TOLERANCES UNLESS OTHERWISE SPECIFIED: | | NAME | |
| | | 0 PLC | ± 0.2 | PRODUCT SPEC | |
| | | 1 PLC | ± 0.2 | 108-78180-1 | |
| | | 2 PLC | ± 0.2 | APPLICATION SPEC | |
| | | 3 PLC | ± 0.2 | | |
| MATERIAL | | 4 PLC | ± 0.2 | SIZE | |
| FINISH | | ANGLES | ± - | CAGE CODE | |
| | | | | DRAWING NO | |
| | | | | RESTRICTED TO | |
| | | | | A300779 | |
| | | | | C=1747981 | |
| | | | | CUSTOMER DRAWING | |
| | | | | SCALE NTS | |
| | | | | SHEET 5 of 9 | |
| | | | | REV F8 | |

| LOC | DIST | REVISIONS | | | |
|-----|------|-------------|------|-----|------|
| P | LTR | DESCRIPTION | DATE | DWN | APVD |
| J | | SEE SHEET 1 | | | |



CONNECTOR WITH FLANGE TYPE

NOTICE: THIS COMMUNICATION INCLUDES TE CONNECTIVITY CONFIDENTIAL OR PROPRIETARY INFORMATION THAT MAY ALSO BE LEGALLY PRIVILEGED.

| | | | | |
|------------------------------|------------------------------------|-----|----------------|------|
| Thickness: 0.08 Color: Brown | POLYIMIDE | 1 | POLYIMIDE TAPE | ④ |
| ③ | COPPER ALLOY | 19 | CONTACT | ③ |
| ③ | COPPER ALLOY | 1 | SHELL | ② |
| | THERMOPLASTIC UL94V-0, BLACK COLOR | 1 | HOUSING | ① |
| FINISH | MATERIAL | QTY | DISCRIPTION | ITEM |

THIS DRAWING IS A CONTROLLED DOCUMENT.

DIMENSIONS: mm TOLERANCES UNLESS OTHERWISE SPECIFIED:

| | |
|--------|-------|
| 0 PLC | ± 0.2 |
| 1 PLC | ± 0.2 |
| 2 PLC | ± 0.2 |
| 3 PLC | ± 0.2 |
| 4 PLC | ± 0.2 |
| ANGLES | ± |
| FINISH | |

MATERIAL

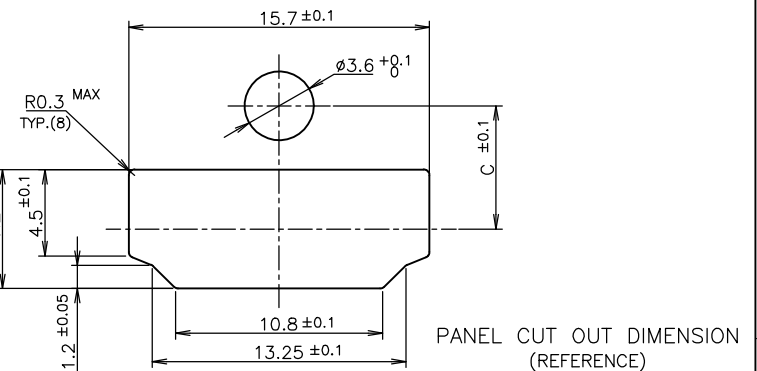
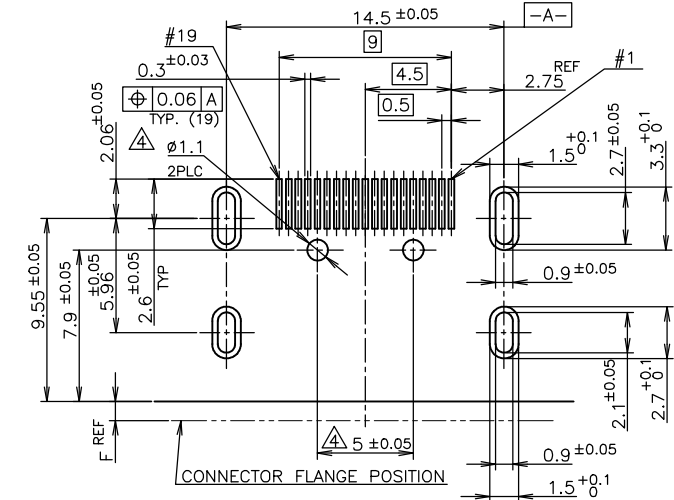
| | | | | | | | |
|-----|-----|------|--------------|-------------|------------------|--------|------------------|
| DWN | CHK | APVD | PRODUCT SPEC | 108-78180-1 | APPLICATION SPEC | WEIGHT | CUSTOMER DRAWING |
|-----|-----|------|--------------|-------------|------------------|--------|------------------|

TE Connectivity

HDMI 19 POS
 RECEPTACLE ASSY SMT TYPE
 -LEAD FREE-

SIZE A3 CAGE CODE 00779 DRAWING NO. C-1747981

SCALE NTS SHEET 7 OF 9 REV F8



THIS DRAWING IS UNPUBLISHED.

RELEASED FOR PUBLICATION

SEP , 2005.

© COPYRIGHT 2005 By -

ALL RIGHTS RESERVED.

LOC

DIST

REVISIONS

P

LTR

DESCRIPTION

DATE

DWN

APVD

-

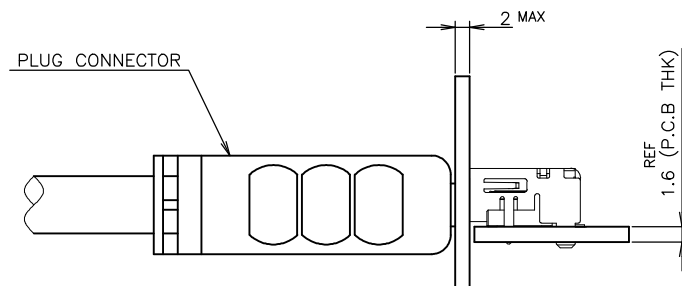
SEE SHEET 1

-

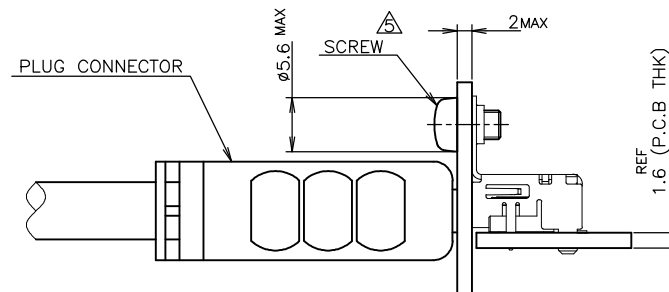
-

-

NOTICE: THIS COMMUNICATION INCLUDES TE CONNECTIVITY CONFIDENTIAL
OR PROPRIETARY INFORMATION THAT MAY ALSO BE LEGALLY PRIVILEGED.



CONNECTOR
WITHOUT FLANGE TYPE



CONNECTOR
WITH FLANGE TYPE

MATING CONDITION (REFERENCE)
(SCALE 2:1)

THIS DRAWING IS A CONTROLLED DOCUMENT.

DIMENSIONS:
mm

TOLERANCES UNLESS
OTHERWISE SPECIFIED:

0 PLC ± 0.2
1 PLC ± 0.2
2 PLC ± 0.2
3 PLC ± 0.2
4 PLC ± 0.2
ANGLES \pm

MATERIAL

FINISH

DWN

CHK

APVD

PRODUCT SPEC

APPLICATION SPEC

WEIGHT

CUSTOMER DRAWING



TE Connectivity

NAME

HDMI 19 POS
RECEPTACLE ASSY SMT TYPE
-LEAD FREE-

SIZE

CAGE CODE

DRAWING NO

RESTRICTED TO

A3

00779

C-1747981

SCALE 2:1

SHEET 9 OF 9

REV F8

Mouser Electronics

Authorized Distributor

Click to View Pricing, Inventory, Delivery & Lifecycle Information:

[TE Connectivity:](#)

[1-1747981-4](#)