

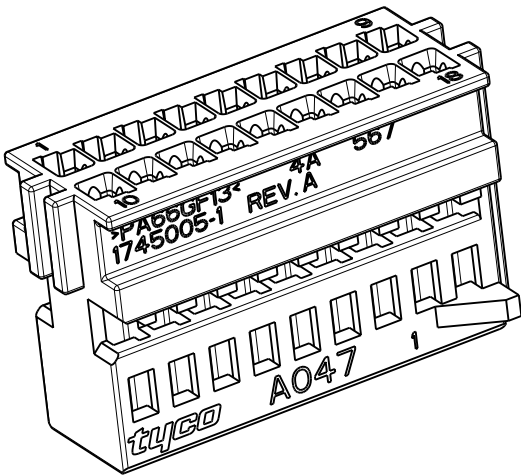
LOC	DIST	REVISIONS				
		REVISIONI		DESCRIPTION	DATE	APVD
P	LTR	REV	DESCRIZIONE	DATA	DWN	APP.
		0	EMISSIONE PRELIMINARE (PRELIMINARY ISSUE)	07MAR2003	M.S.	O.C.
		1	ERA (WAS) P/N 03-51039-3	04NOV2003	M.S.	O.C.
		A	PRIMA EMISSIONE (FIRST ISSUE) ET00-0043-04	11JUN2004	M.P.	O.C.
		A1	RILASCIATO IN PRODUZIONE (RELEASED FOR PRODUCTION) ET00-0239-04	04FEB2005	M.P.	O.C.
		A2	ECR-11-017843	05SEP2011	M.P.	O.C.

NOTES:
(NOTE)

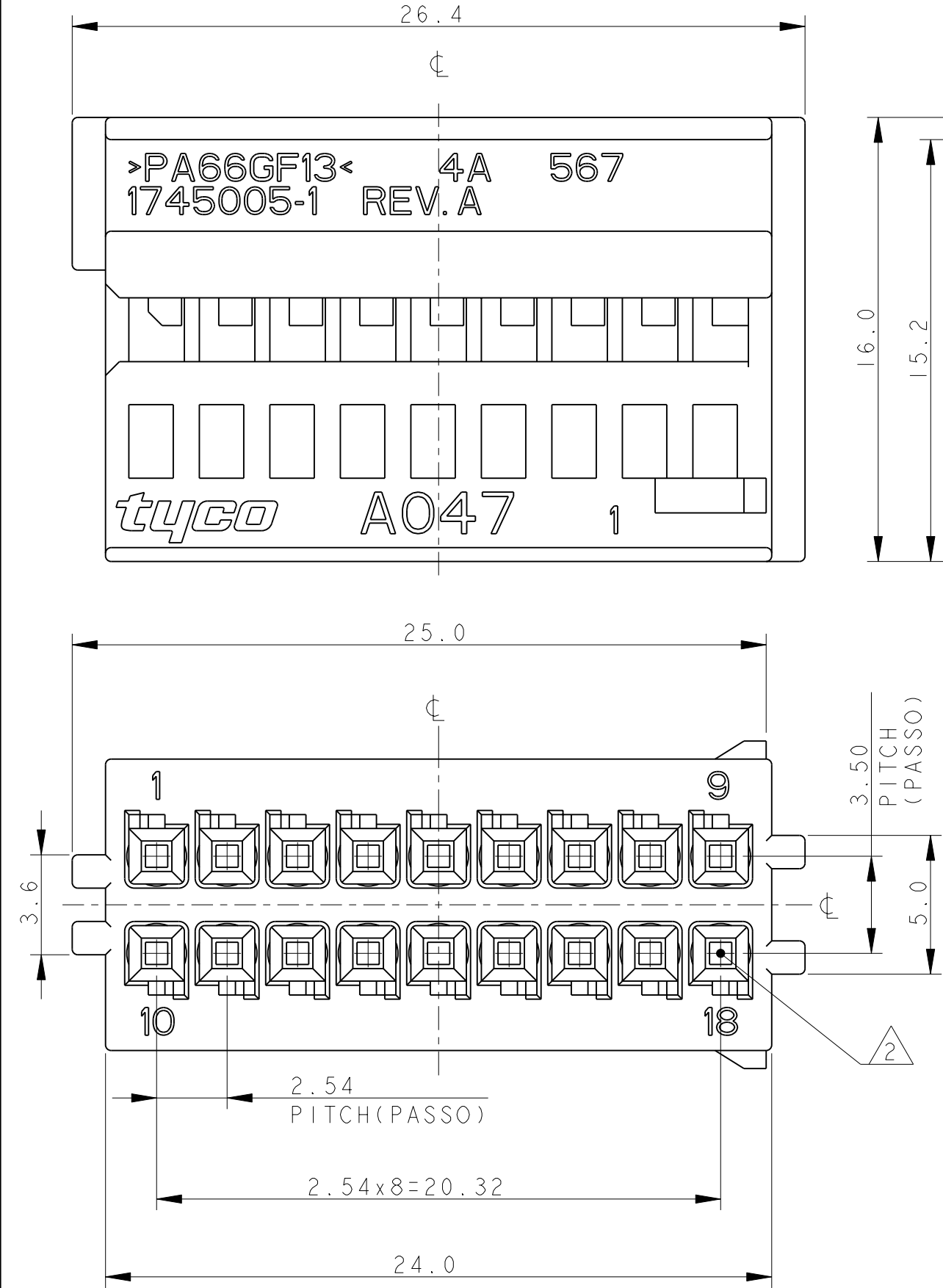
1 HOUSING MATERIAL: PA66 GF COLOUR BLACK
(MATERIALE BLOCCHETTO: PA66 CARICATO VETRO
COLORE NERO)

2 CAVITIES SUITABLE FOR REC. MQS CONTACT
P/N 928999-1
(CAVITA' ADATTE PER CONTATTO FEMMINA MQS
P/N 928999-1)

3) HOUSING SUITABLE FOR FRAME 18 POSITIONS
P/N 1745003-1
(PORTAFEMMINE ADATTO PER CORAZZA 18
POSIZIONI P/N 1745003-1)

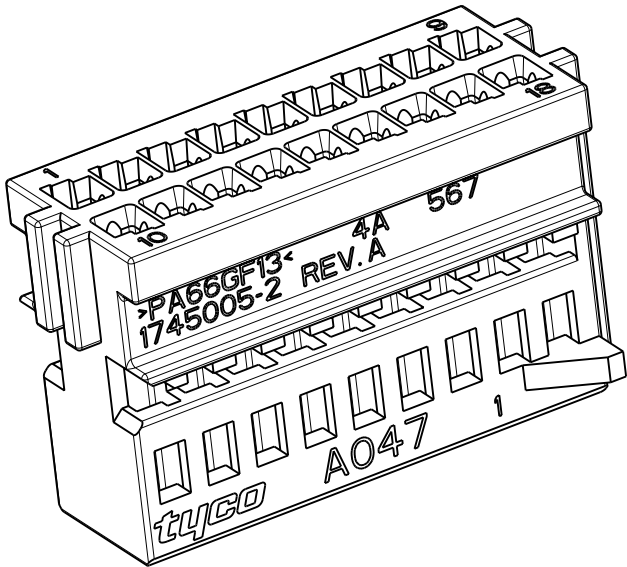
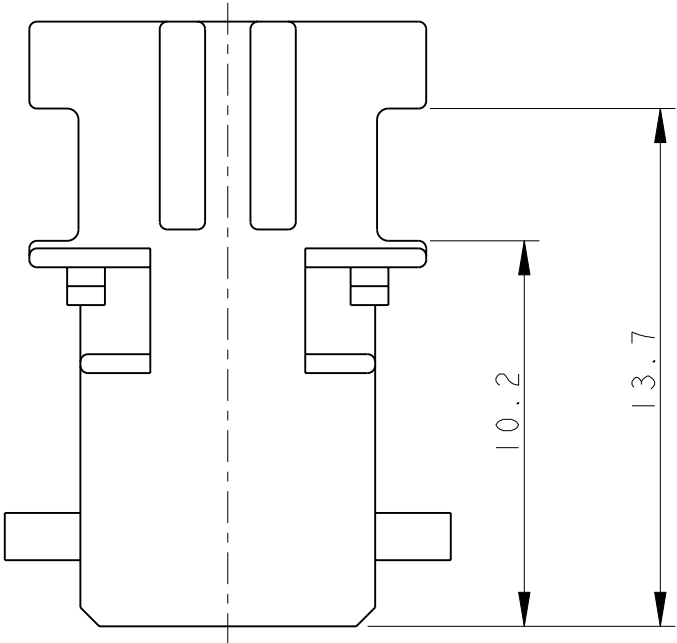
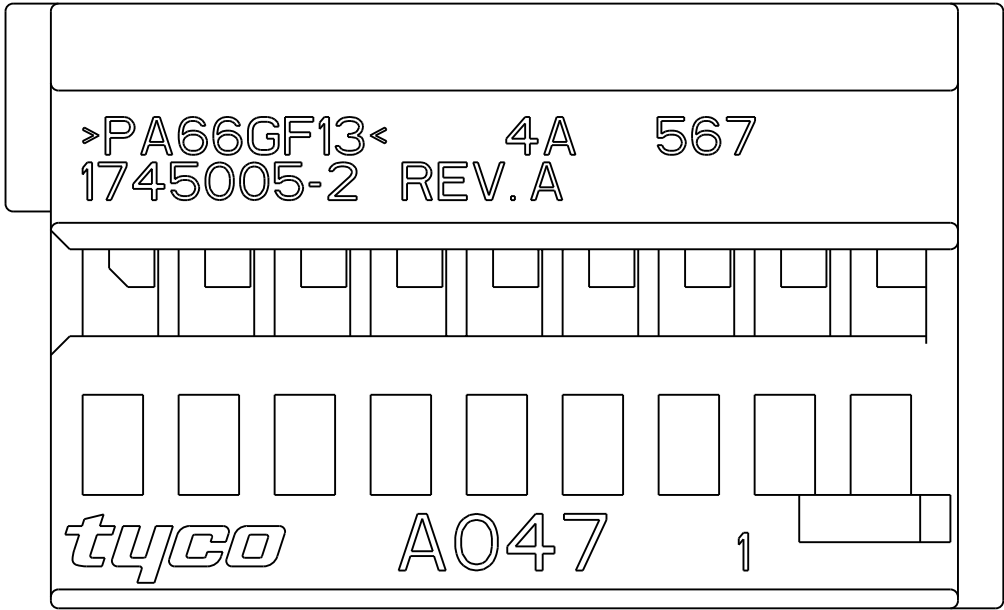


P/N 1745005-1 BLACK AS SHOWN
(NERO COME MOSTRATO)



THIS DRAWING IS A CONTROLLED DOCUMENT. QUESTO DISEGNO È UN DOCUMENTO DI PROPRIETÀ E RESPONSABILITÀ DELL'AMP INCORPORATED. È SOGGETTO A VARIAZIONI. PER OTTENERE L'ULTIMA REVISIONE DEL DISEGNO CONTATTARE L'UFFICIO TECNICO RESPONSABILE.		DWN/DIS. 07MAR2003 M. SARDI	<div><div>TE Connectivity</div></div>		
DIMENSIONS: DIMENSIONI: mm		CHK/CONT. 07MAR2003 O. CANUTO			
TOLERANCES UNLESS OTHERWISE SPECIFIED: TOLLERANZE: SE NON DIVERSAMENTE SPECIFICATO		APVD/APP. 07MAR2003 A. GENTA	NAME NOME 18 POS. MQS RECEPTACLE HOUSING		
0 PLC/DEC ±0.5 1 PLC/DEC ±0.3 2 PLC/DEC ±0.2 3 PLC/DEC ±0.1 4 PLC/DEC ±0.1		PRODUCT SPEC SPEC. DI PRODOTTO 108-20182	PITCH 2.54mm (PORTAFEMMINE MQS 18 VIE PASSO 2.54mm)		
MATERIAL MATERIALE		APPLICATION SPEC SPEC. DI APPLICAZIONE 411-20056	SIZE PESO A300779	CAGE CODE C=1745005	RESTRICTED TO -
FINISH FINITURA		WEIGHT PESO -	DISEGNO PER CLIENTE SOLO PER RIFERIMENTO		
CUSTOMER DRAWING		SCALE 5:1		SHEET FOGLIO 1	REV DI 2

LOC 	DIST -	REVISIONS					
		P	LTR	DESCRIPTION	DATE	DWN	APVD
			-	SEE SHEET 1	-	-	-


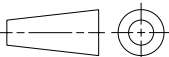




SCALE 3:1

3) HOUSING SUITABLE FOR FRAME 18 POSITIONS
P/N 1745003-2
(PORTAFEMMINE ADATTO PER CORAZZA 18
POSIZIONI P/N 1745003-2)

P/N 1745005-2 COLOUR GRAY AS SHOWN
(COLORE GRIGIO COME MOSTRATO)

FOR MISSING DIMENSIONS AND NOTES SEE P/N 1745005-1 (SHEET 1/2)
(PER LE DIMENSIONI E NOTE MANCANTI VEDI P/N 1745005-1 (FOGLIO 1/2))

THIS DRAWING IS A CONTROLLED DOCUMENT.		DWN M. SARDI	07MAR2003	 TE Connectivity			
		CHK O. CANUTO	07MAR2003				
		APVD A. GENTA	07MAR2003	NAME 18 POS. MQS RECEPTACLE HOUSING PITCH 2.54mm (PORTAFEMMINE MQS 18 VIE PASSO 2.54mm)			
DIMENSIONS: mm		TOLERANCES UNLESS OTHERWISE SPECIFIED:		PRODUCT SPEC 108-20182			
		0 PLC ±0.5 1 PLC ±0.3 2 PLC ±0.2 3 PLC ± 4 PLC ± ANGLES ±1°		APPLICATION SPEC 411-20056		RESTRICTED TO	
MATERIAL 		FINISH 		WEIGHT -		A300779C-1745005	
CUSTOMER DRAWING				SCALE 5:1		SHEET 2 OF 2	
						REV A2	

Mouser Electronics

Authorized Distributor

Click to View Pricing, Inventory, Delivery & Lifecycle Information:

[TE Connectivity:](#)

[1745005-1](#)