

Technical drawing of a mechanical part with dimensions and a table.



Dimensions:

- 2±0.1 [.079±.004]
- 3.7±0.1 [.146±.004]
- 7.7 [.303]
- 9.4 [.370]
- 3.7 [.146]
- 8.21 [.323]

12	57.22
11	52.14
10	47.06
9	41.98
8	36.90

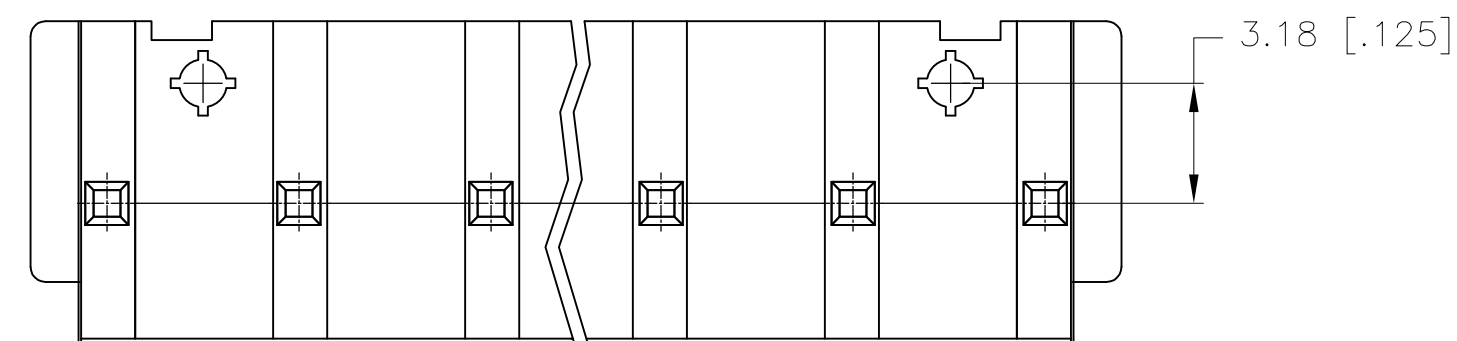
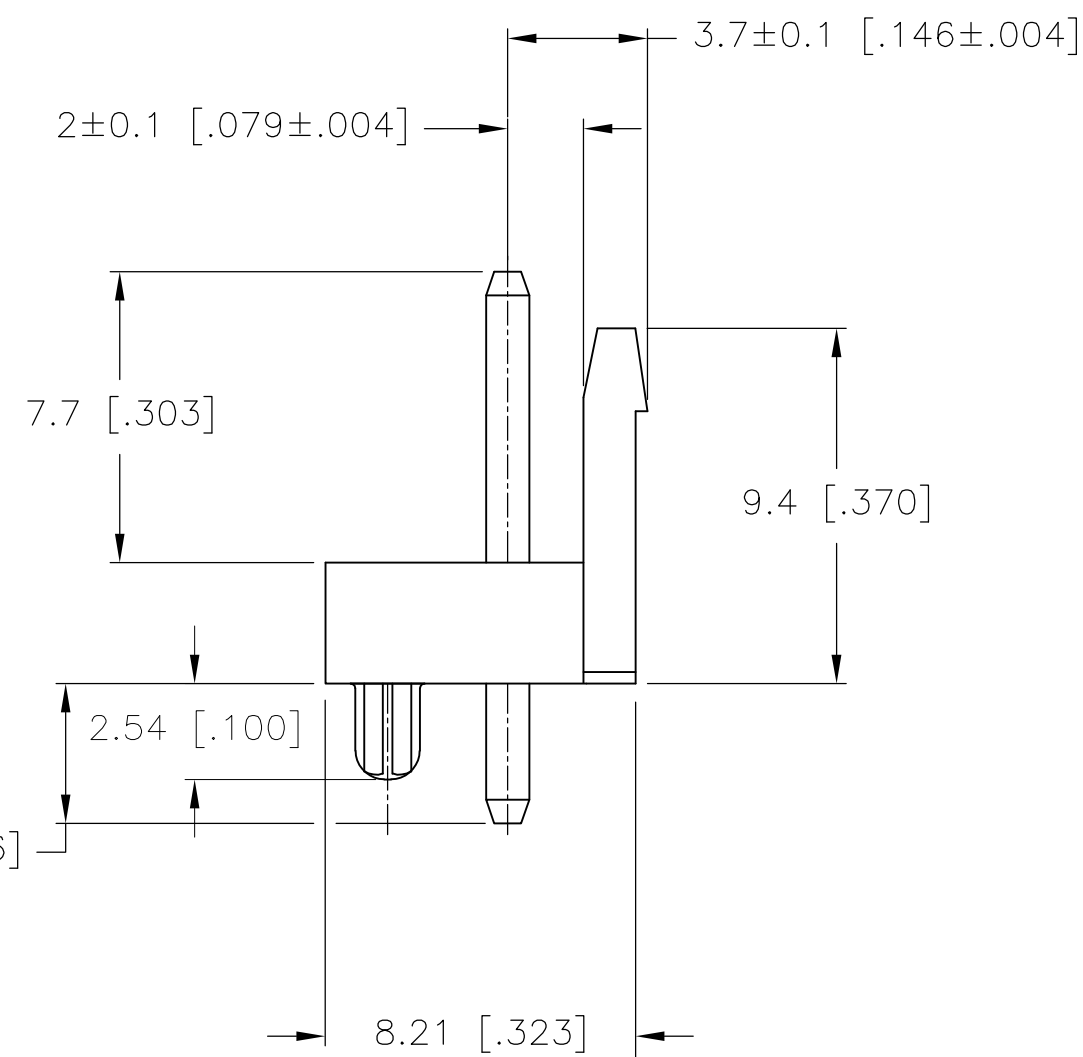
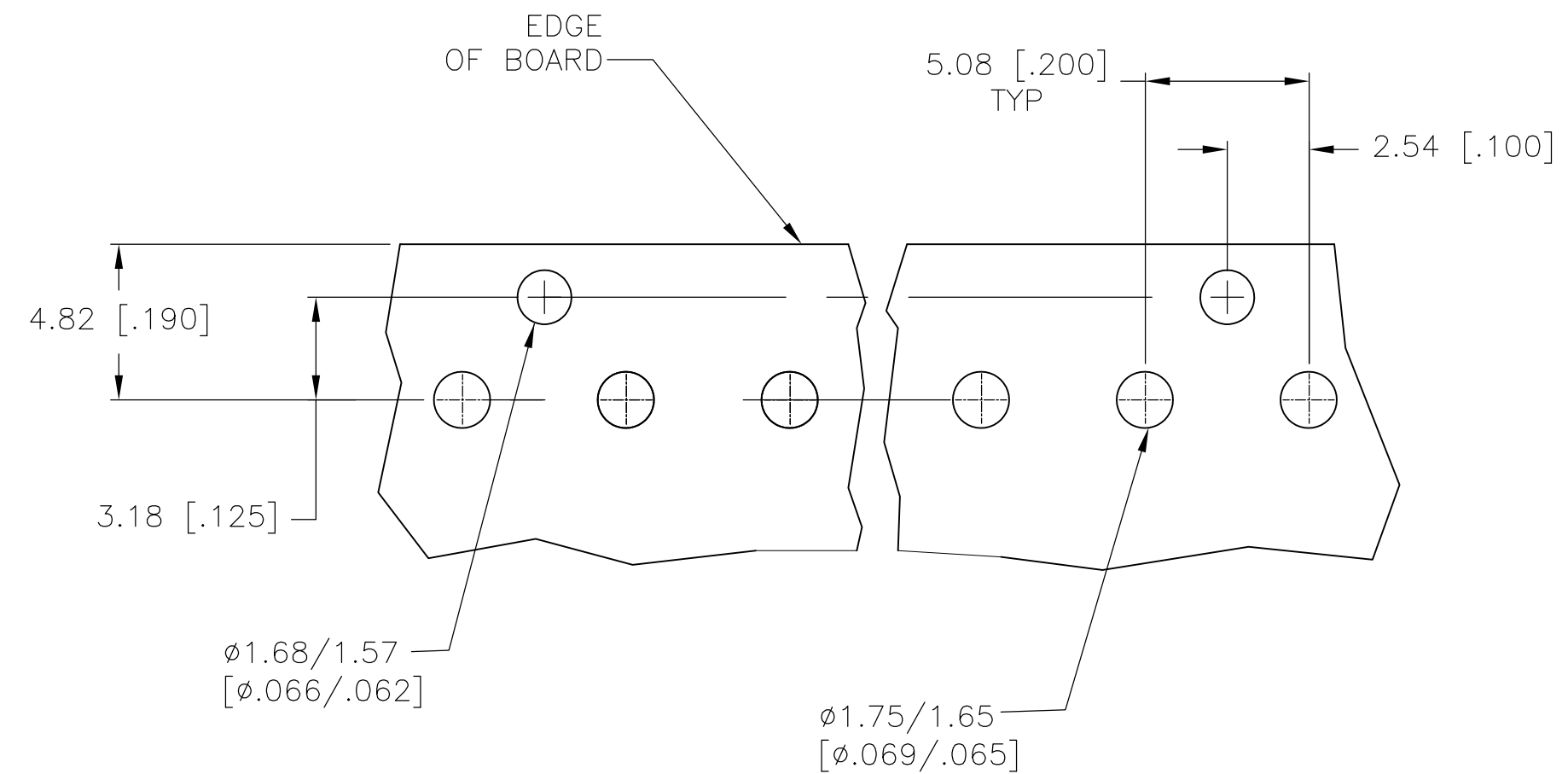
1. HOUSING MATERIAL: NYLON 66, UL94V-0, NATURAL.
2. CONTACT MATERIAL: COPPER ALLOY
3. CONTACT PLATING: 0.003[.000120] MIN TIN OVER
0.001[.000039] MIN NICKEL

12	57.22 [2.254]	59.84 [2.357]	55.88 [2.200]	1-1744037-2
11	52.14 [2.054]	54.76 [2.157]	50.8 [2.000]	1-1744037-1
10	47.06 [1.854]	49.68 [1.957]	45.72 [1.800]	1-1744037-0
9	41.98 [1.654]	44.6 [1.757]	40.64 [1.600]	1744037-9
8	36.9 [1.453]	39.52 [1.557]	35.56 [1.400]	1744037-8
7	31.82 [1.253]	34.44 [1.356]	30.48 [1.200]	1744037-7
6	26.74 [1.053]	29.36 [1.156]	25.4 [1.000]	1744037-6
5	21.66 [.853]	24.28 [.956]	20.32 [.800]	1744037-5
4	16.58 [.653]	19.2 [.756]	15.24 [.600]	1744037-4
3	11.5 [.453]	14.12 [.556]	10.16 [.400]	1744037-3
2	6.42 [.253]	9.04 [.356]	5.08 [.200]	1744037-2
NO OF POSITIONS	DIM C ± 0.2 [.008]	DIM B ± 0.3 [.012]	DIM A ± 0.3 [.012]	PART NUMBER

THIS DRAWING IS A CONTROLLED DOCUMENT.		DWN S. HOOVER 01-APR-2004		 TE Connectivity	
		CHK J. ELLIS 01-APR-2004			
DIMENSIONS: mm [INCHES]		TOLERANCES UNLESS OTHERWISE SPECIFIED: 0 PLC ± - 1 PLC ± 0.25 [.010] 2 PLC ± 0.15 [.006] 3 PLC ± - 4 PLC ± - ANGLES ± - FINISH		NAME HEADER ASSEMBLY-ECONOMY POWER VERTICAL, .200 CENTERLINE	
		APVD J. ELLIS 01-APR-2004 PRODUCT SPEC APPLICATION SPEC		SIZE A2	
MATERIAL SEE NOTES		WEIGHT CUSTOMER DRAWING		CAGE CODE 00779	
				DRAWING NO C-1744037	
				RESTRICTED TO -	
				SCALE N/A	
				SHEET 1 of 2	
				REV A2	



17440.37

A



1744037

6	26.74 [1.053]	29.36 [1.156]	25.4 [1.000]	3-1744037-6
NO OF POSITIONS	DIM C ± 0.2 [.008]	DIM B ± 0.3 [.012]	DIM A ± 0.3 [.012]	PART NUMBER

THIS DRAWING IS A CONTROLLED DOCUMENT.		DWN S. HOOVER	01-APR-2004		 TE Connectivity			
		CHK J. ELLIS	01-APR-2004					
DIMENSIONS: mm [INCHES]	<div>TOLERANCES UNLESS OTHERWISE SPECIFIED:</div> <div>0 PLC ± - 1 PLC ± 0.25 [.010] 2 PLC ± 0.15 [.006] 3 PLC ± - 4 PLC ± - ANGLES ± - FINISH</div>	APVD J. ELLIS	01-APR-2004		NAME HEADER ASSEMBLY-ECONOMY POWER VERTICAL, .200 CENTERLINE			
		PRODUCT SPEC						
		APPLICATION SPEC						
		MATERIAL SEE NOTES	WEIGHT	SIZE A2	CAGE CODE 00779	DRAWING NO C-1744037	RESTRICTED TO —	
		CUSTOMER DRAWING				SCALE N/A	SHEET 2 of 2	REV A2

Mouser Electronics

Authorized Distributor

Click to View Pricing, Inventory, Delivery & Lifecycle Information:

[TE Connectivity:](#)

[1744037-5](#)