

THIS DRAWING IS UNPUBLISHED.

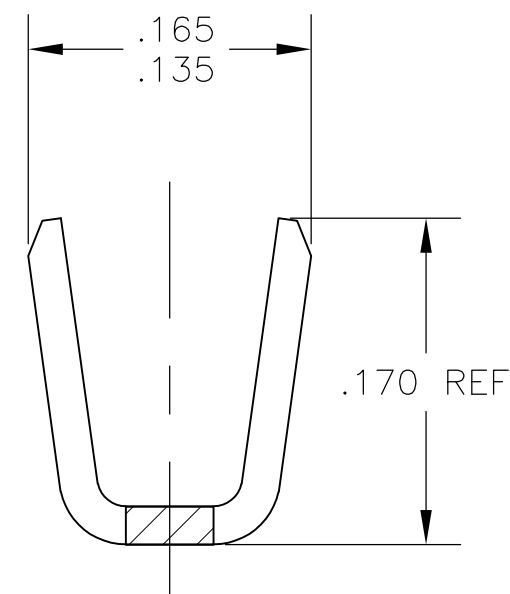
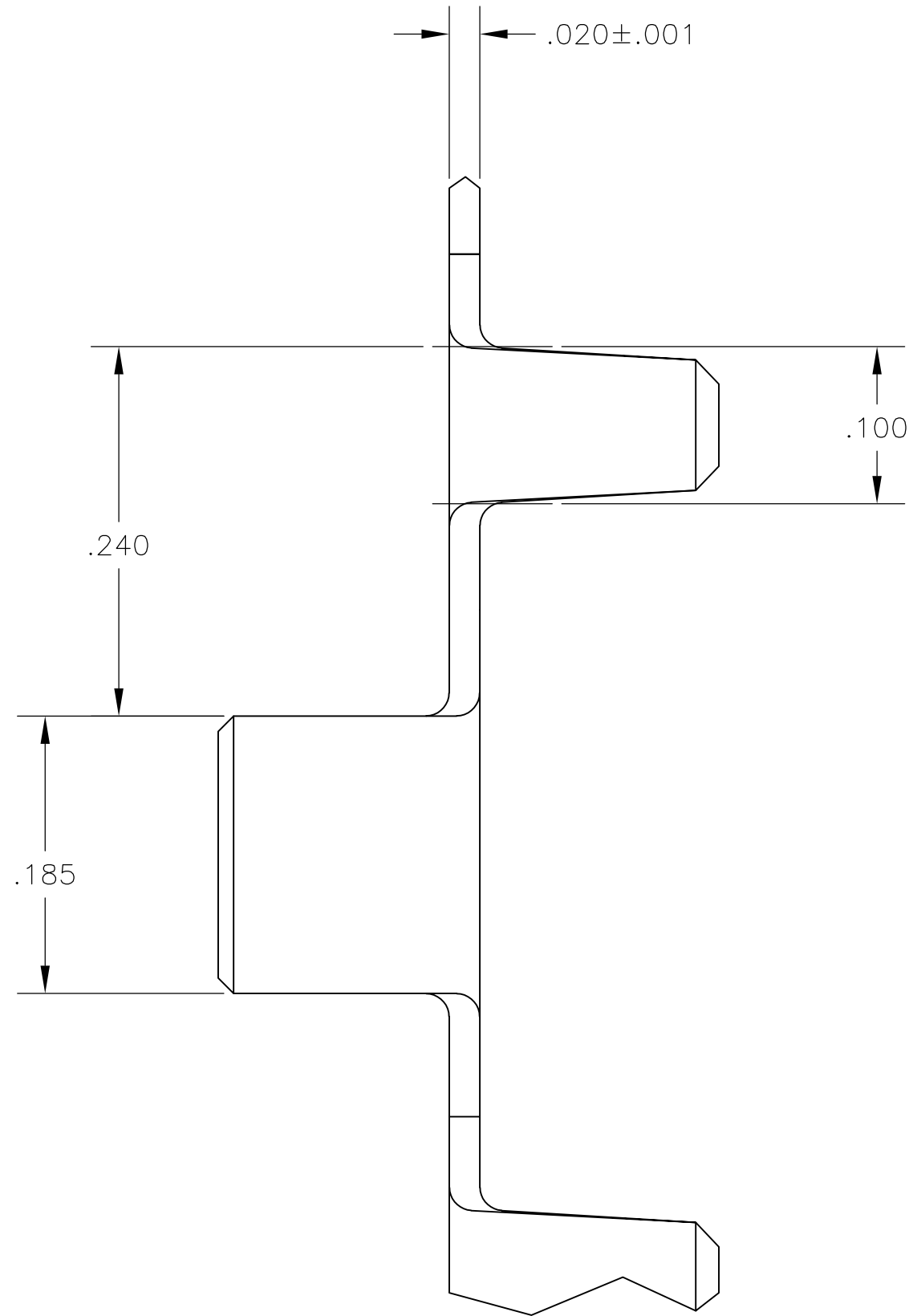
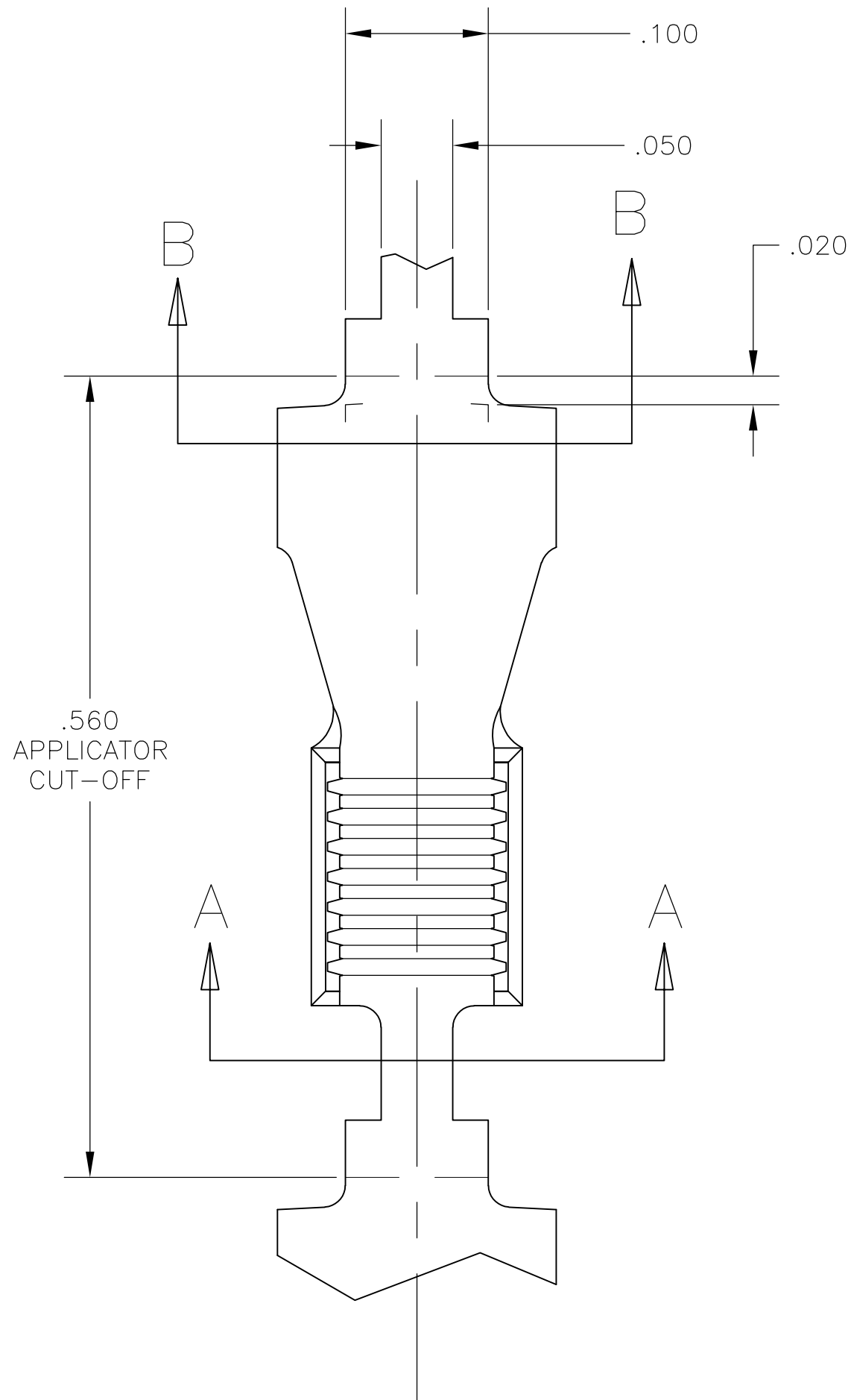
RELEASED FOR PUBLICATION

ALL RIGHTS RESERVED.

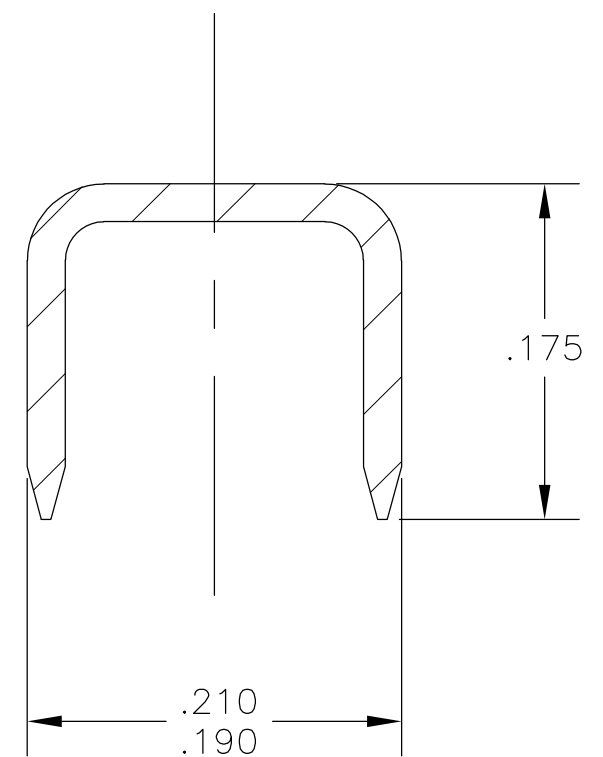
© COPYRIGHT - By -

LOC	DIST	REVISIONS					
		P	LTR	DESCRIPTION	DATE	DWN	APVD
AF	14		B	REVISE PER ECR -13-003819	06JAN13	GRZ	DZ

- 1
- PRODUCT PROVIDED IN STRIP FORM ON REELS;
BREAKS MAY BE PRESENT.
- 2
- WIRE RANGE: 3000-6000 CMA.
- 3
- BOARD THICKNESS: .062
- 4
- BOARD HOLE SIZE: .110±.005 X .215±.005.
- 5
- PRELIMINARY - NOT FOR PRODUCTION.


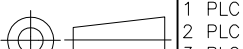


SECTION A-A



SECTION B-B

REVERSE	1742324-2
STANDARD	5 1742324-1
REELING	PART NUMBER

THIS DRAWING IS A CONTROLLED DOCUMENT.			DWN M.S. FEHER 25JUL2005		 TE Connectivity									
			CHK G.D. PORTA 27JUL2005											
DIMENSIONS: INCHES			TOLERANCES UNLESS OTHERWISE SPECIFIED:		APVD G.D. PORTA 27JUL2005		NAME							
			0 PLC ± -		PRODUCT SPEC		SPLICE, AMPLIVAR STAKING, SEVEN (7) SERRATIONS -							
			1 PLC ± -		-									
			2 PLC ± -											
			3 PLC ± .010											
			4 PLC ± ± 1°		APPLICATION SPEC									
			ANGLES		-		SIZE		CAGE CODE		DRAWING NO		RESTRICTED TO	
MATERIAL			FINISH		WEIGHT -		A2		00779		C-1742324		-	
BRASS			TIN PLATE		CUSTOMER DRAWING		SCALE		8:1		SHEET		1 of 1	
													REV B	

Mouser Electronics

Authorized Distributor

Click to View Pricing, Inventory, Delivery & Lifecycle Information:

[TE Connectivity:](#)

[1742324-2](#)