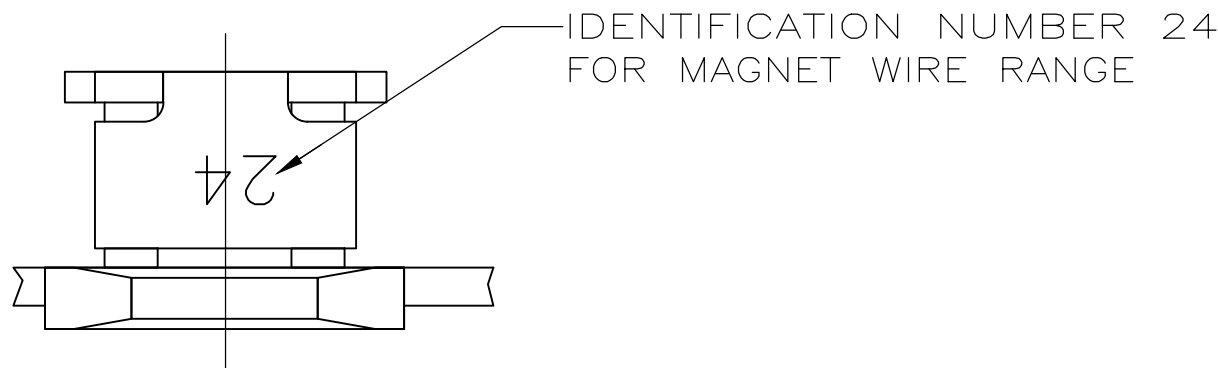
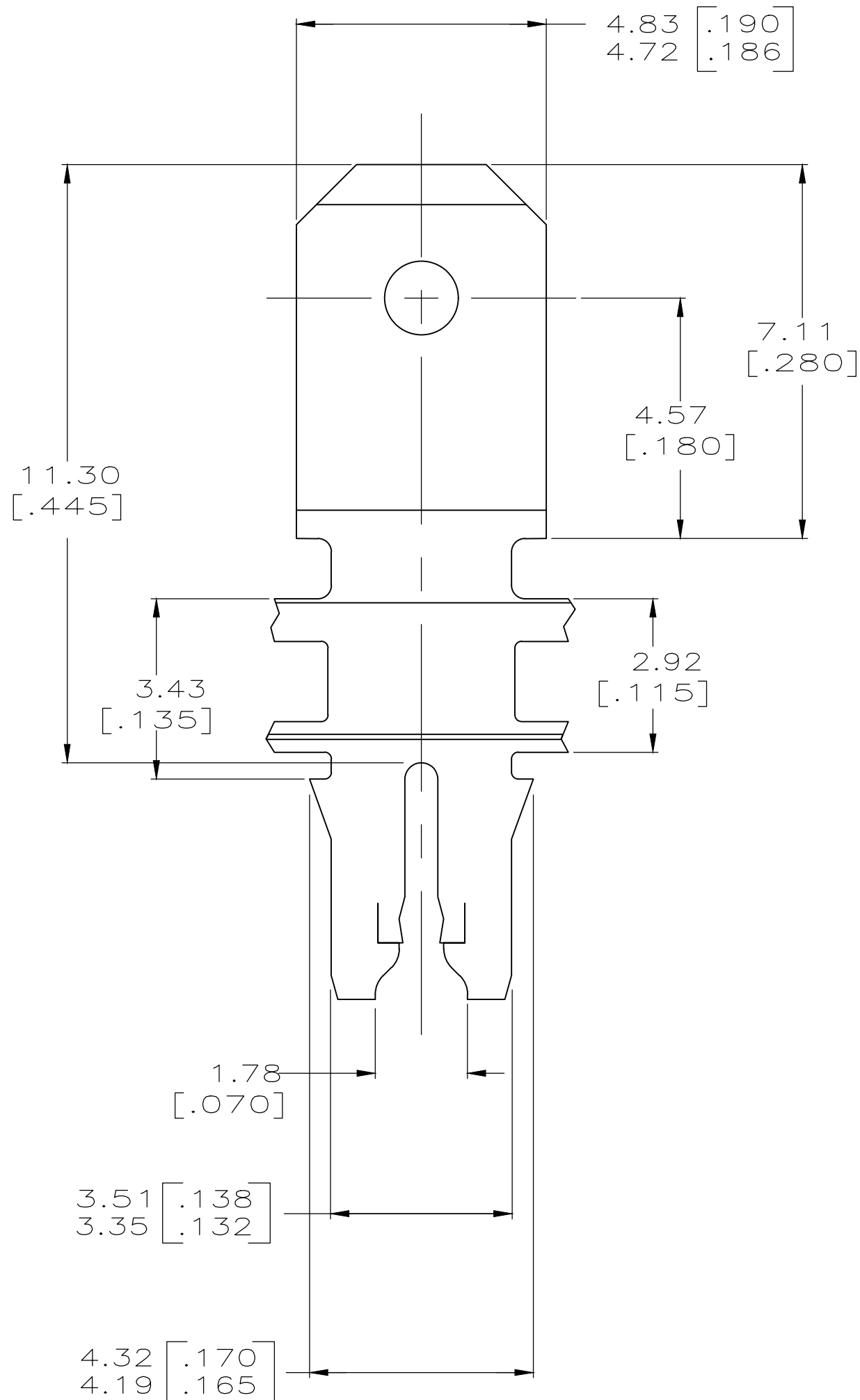


LOC	DIST	REVISIONS					
		P	LTR	DESCRIPTION	DATE	DWN	APVD
AF	50		C	WIRE SIZE EXTENDED TO 16.5AWG	11NOV2019	JA	PKS

D

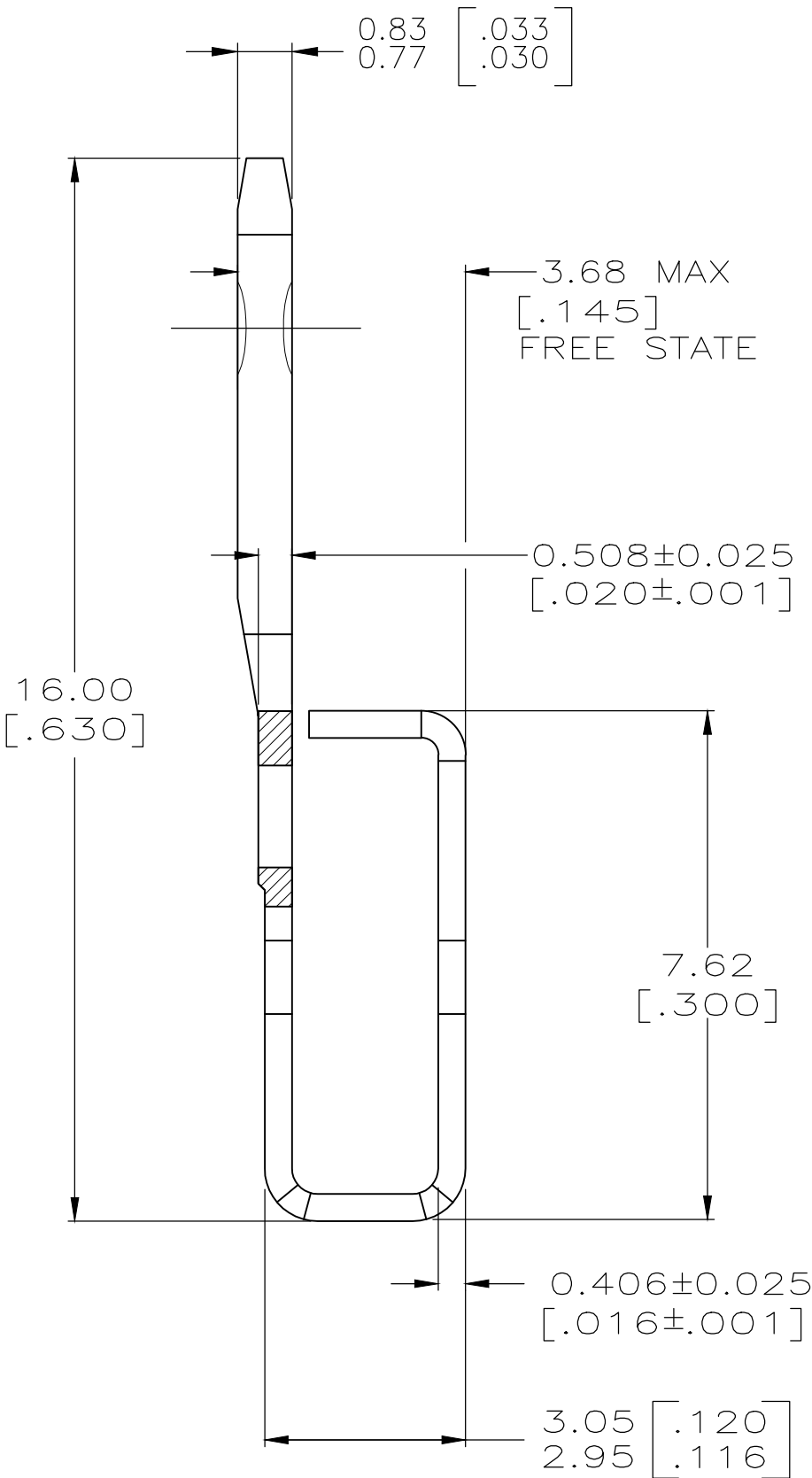


C



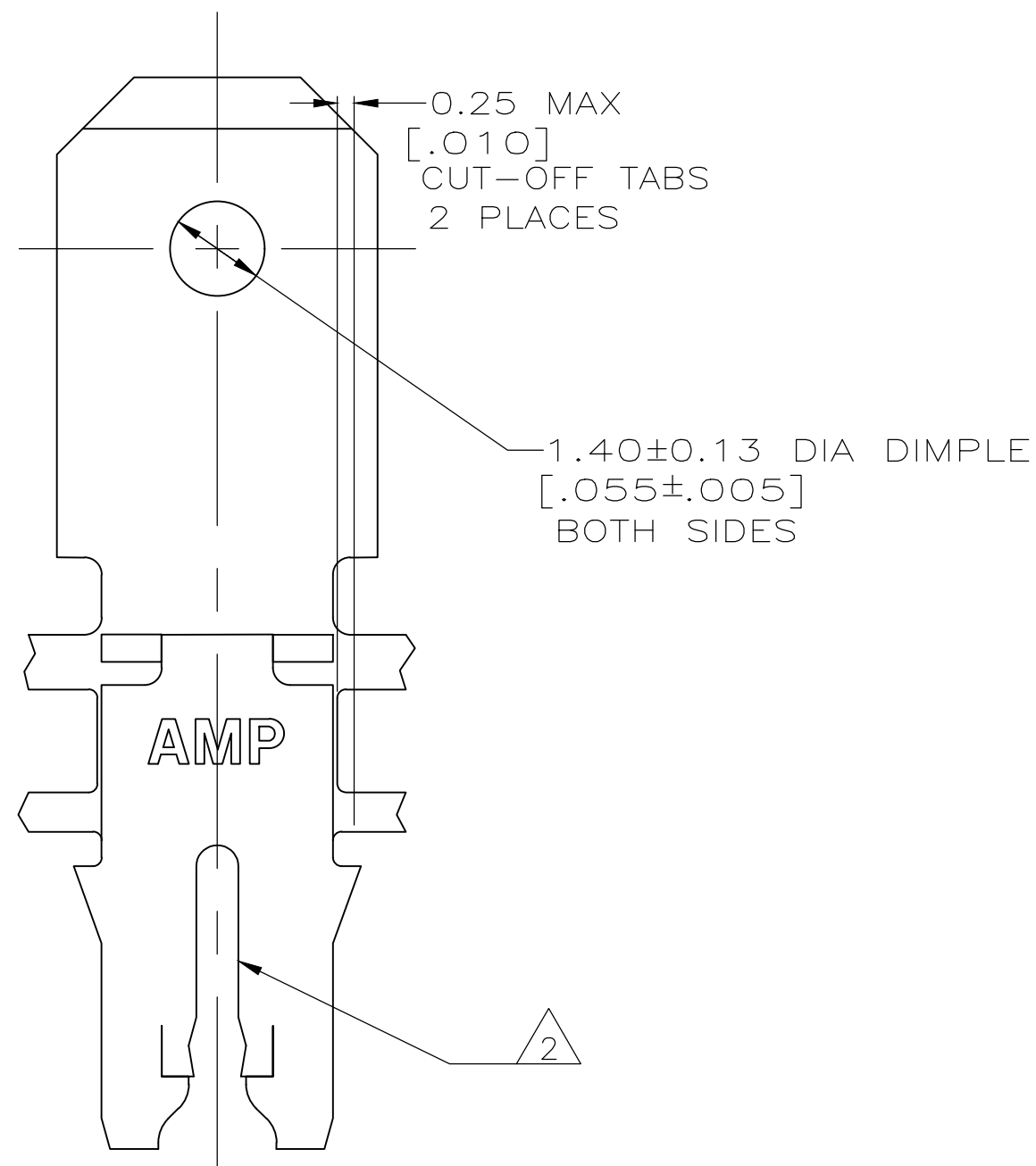
B

A



- 1 CONTINUOUS STRIP ON REELS WITH TERMINALS LOCATED ON 5.59±0.08 [.220±.003] CENTERS.
- 2 SLOT TERMINATES A SINGLE MAGNET WIRE ONLY. COPPER REANGE: 0.91–1.20mm [#19–#16.5] AWG. ALUMINUM RANGE: 0.95–1.20mm [#18.5–#16.5] AWG. ALUMINUM WIRE RANGE APPLIES FOR POST-TIN PLATED VERSIONS ONLY.
- 3 AFTER INSERTION INTO PLASTIC HOLDER TAB PORTION MUST BE BENT OVER 45° TO 90° OR POTTED-IN TO PREVENT PULL-OUT WHEN MATING RECEPTACLE IS DISCONNECTED.

4 PREPRODUCTION – FASR REQUIRED



D

C

1742035

B

A

4	1742035-1
PART NUMBER	

THIS DRAWING IS A CONTROLLED DOCUMENT.		DWN 09DEC2003 MICHAEL S. FEHER	TE Connectivity			
DIMENSIONS: mm [INCHES]		CHK 09DEC2003 KURT A. RANDOLPH				
		APVD 09DEC2003 KURT A. RANDOLPH	NAME			
		PRODUCT SPEC	TERMINAL, TAB, 4.75[.187] FASTON,™ 300 SERIES MAG-MATE™			
MATERIAL 082 PRE-MILLED BRASS		FINISH 0.002032[.000080] MIN TIN PLATE	108-2012	114-2046	SIZE A2	CAGE CODE 00779
			APPLICATION SPEC	WEIGHT -	DRAWING NO C=1742035	RESTRICTED TO -
			CUSTOMER DRAWING	SCALE 10:1	SHEET 1 of 1	REV C

# Mouser Electronics

Authorized Distributor

Click to View Pricing, Inventory, Delivery & Lifecycle Information:

[TE Connectivity:](#)

[1742035-1](#)