

4

3

2

1

THIS DRAWING IS UNPUBLISHED.

RELEASED FOR PUBLICATION

AUG ,2006.

©

COPYRIGHT

-

BY TYCO ELECTRONICS CORPORATION.

ALL RIGHTS RESERVED.

LOC

DIST

REVISIONS

P

LTR

DESCRIPTION

DATE

DWN

APVD

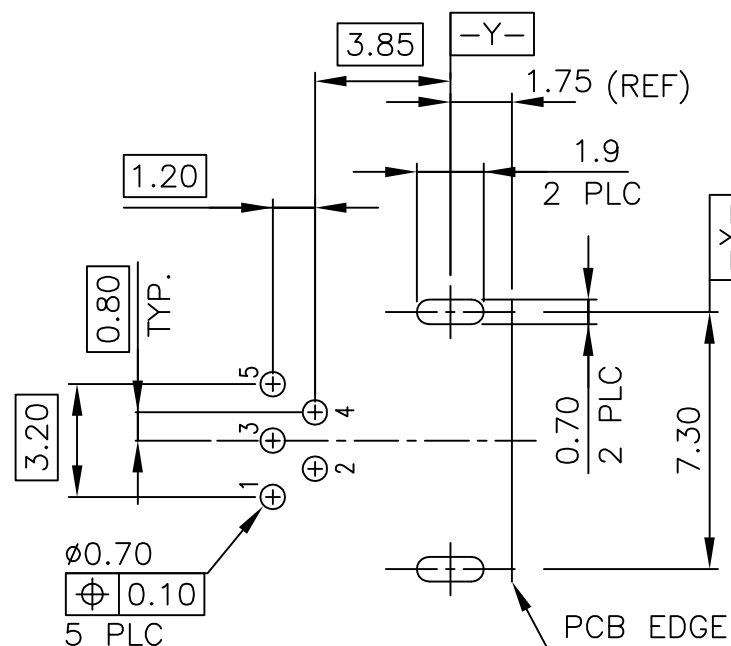
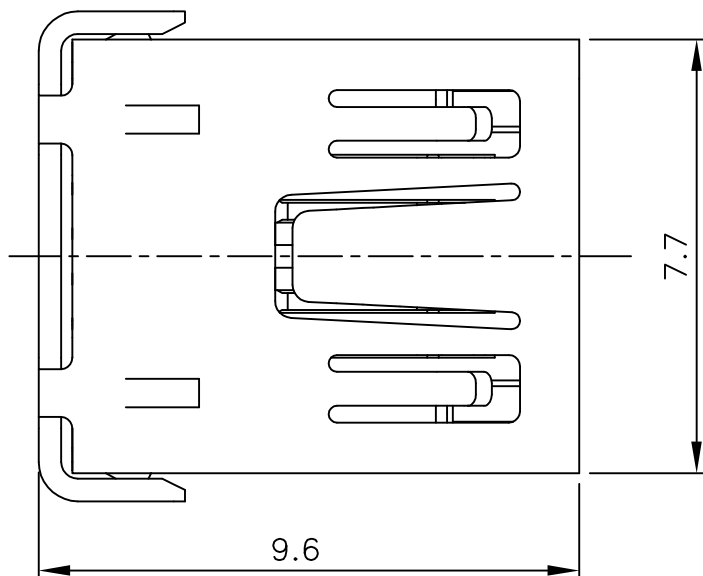
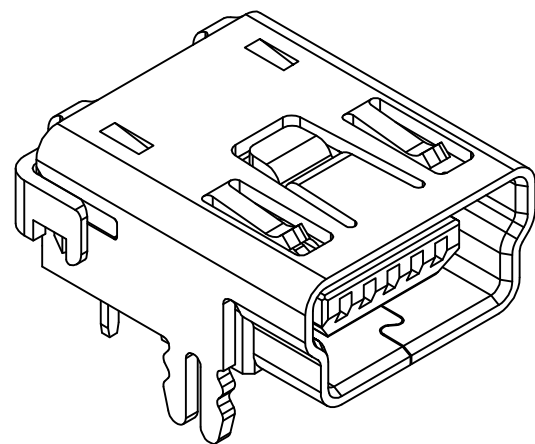
C

REVISED SHELL MATERIAL

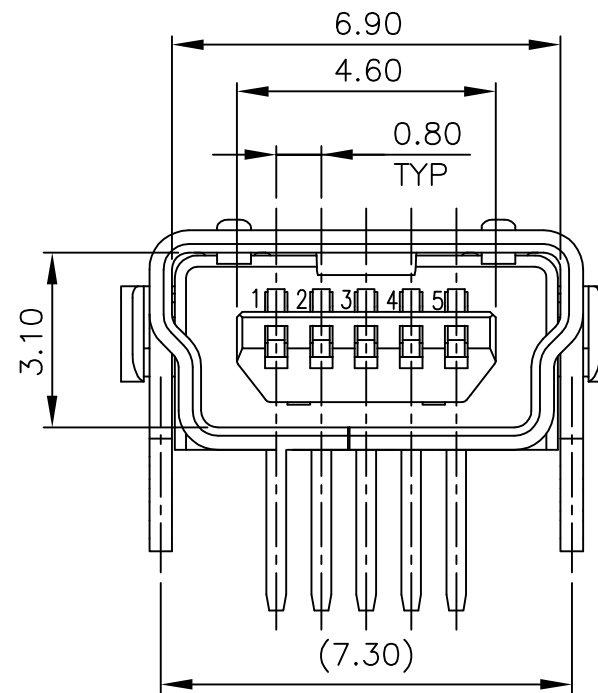
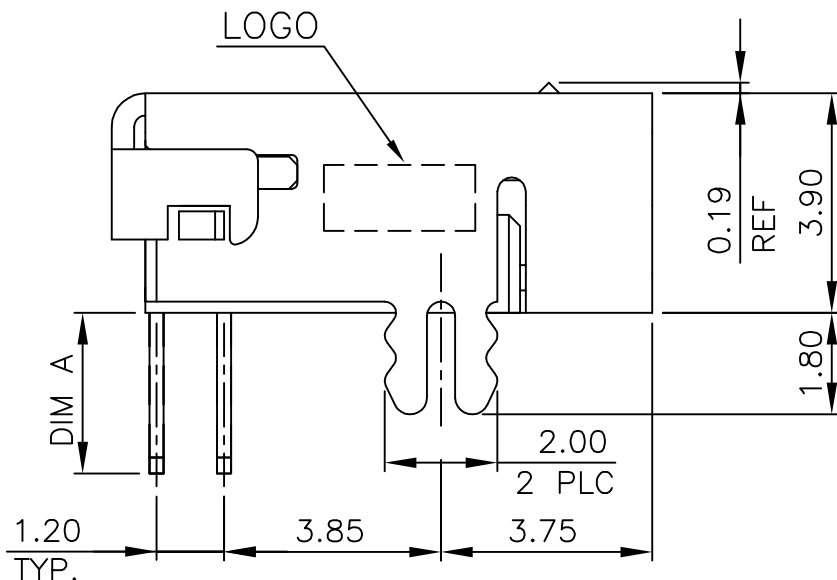
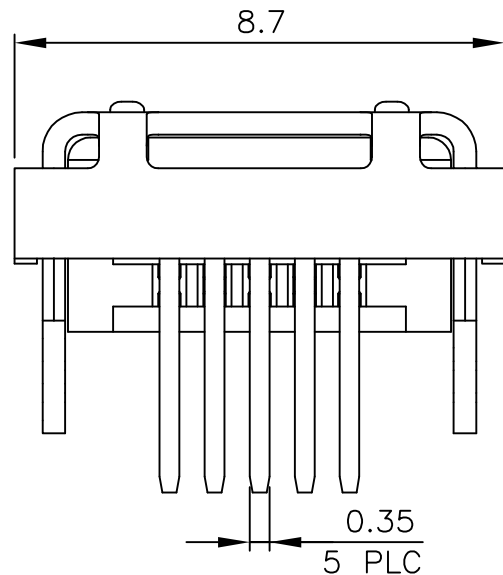
18MAY2016

B.L

J.L



RECOMMENDED PCB LAYOUT (THICKNESS: 1.6MM)  
(DIMENSION TOLERANCE: 1 PLC: ±0.1 2PLC: ±0.05)



3.25		PBT	1-1734510-1
2.55		PBT	1734510-3
2.85		PA9T	1734510-2
2.85		PBT	1734510-1
DIM A	SOLERING PROCESS	HOUSING MATERIAL	PART NUMBER

NOTE:

1. MATERIAL:

HOUSING: (SEE TABLE) WITH 30% GF, UL 94V-0, COLOR BLACK.

CONTACT: PHOSPHOR BRONZE, THICKNESS: 0.25mm.

SHIELD: SUS304, THICKNESS: 0.40mm.

2. FINISH:

CONTACT: GOLD FLASH OVER

0.762um [30u"] MIN. PALLADIUM-NICKEL PLATED ON CONTACT AREA,

2.54um [100u"] MIN. MATTE TIN PLATED ON SOLDERTAILS,

1.27um [50u"] MIN. NICKEL UNDERPLATED ALL OVER.

SHIELD: 0.762um [30u"] MIN. MATTE TIN OVER 1.27um [50u"] MIN. Ni. UNDERPLATED ALL OVER.

WAVE SOLDER CAPABLE TO 240°C. PER TE SPEC 109-202, CONDITION A.

WAVE SOLDER CAPABLE TO 265°C PER TE SPEC 109-202, CONDITION B.

THIS DRAWING IS A CONTROLLED DOCUMENT.

DWN 20JAN2009

S. CHIEN

CHK 20JAN2009

S. CHIEN

APVD 20JAN2009

W. KODAMA

PRODUCT SPEC

108-57062

QUALIFICATION TEST REPORT

501-57070

WEIGHT 0.62 GRAMS

CUSTOMER DRAWING



TE Connectivity

NAME

MINI USB CONN., RCPT R/A, DIP, B TYPE

SIZE

CAGE CODE

DRAWING NO

RESTRICTED TO

A300779C=1734510

SCALE

SHEET

1 of 2

REV

C

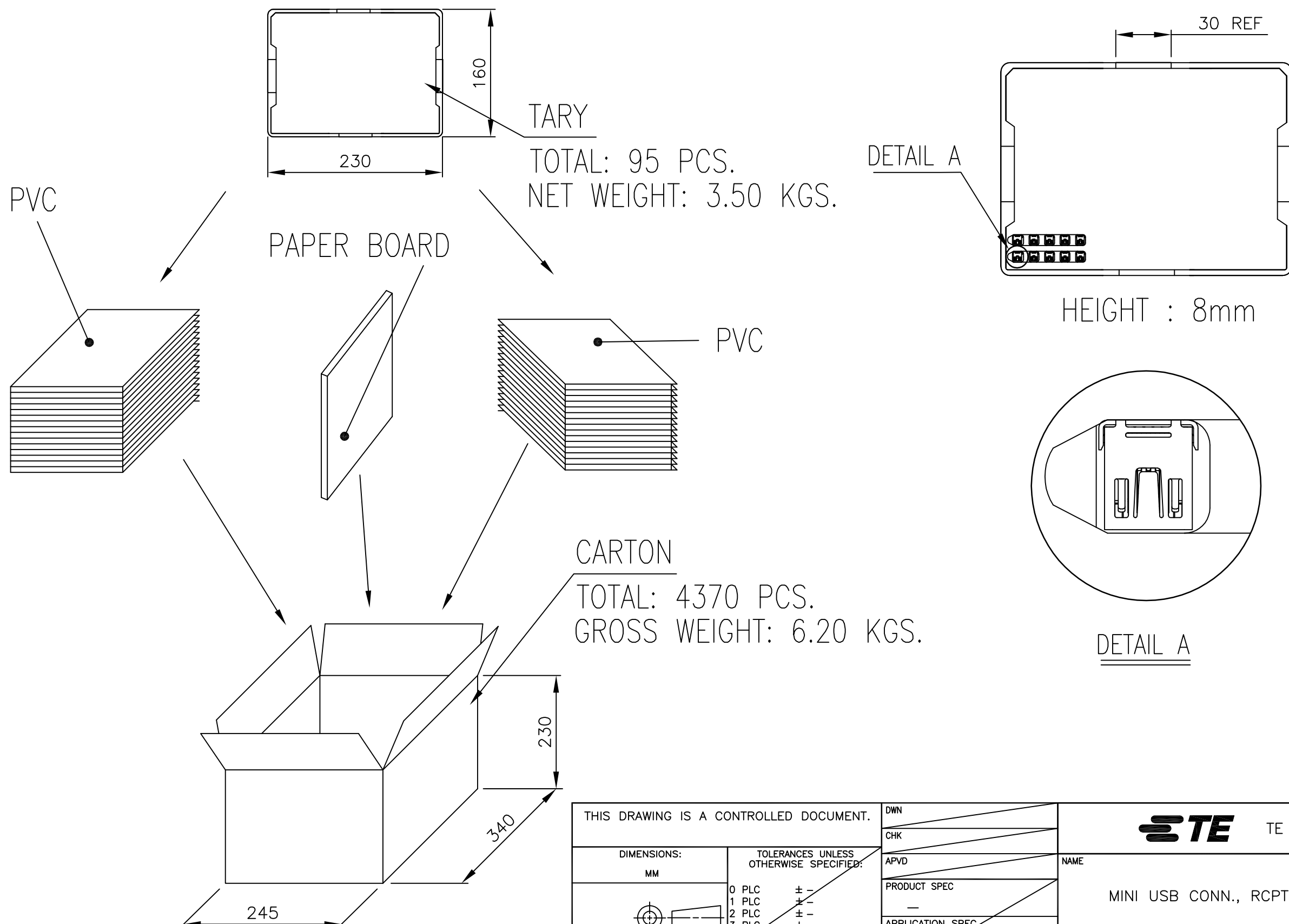
4

3

2

1

LOC	DIST	REVISIONS			
		P	LTR	DESCRIPTION	DATE
DW				SEE SHEET 1.	



THIS DRAWING IS A CONTROLLED DOCUMENT.		<b>TE</b> TE Connectivity			
DIMENSIONS: MM		NAME			
		MINI USB CONN., RCPT R/A, DIP, B TYPE			
TOLERANCES UNLESS OTHERWISE SPECIFIED:		SIZE	CAGE CODE	DRAWING NO	RESTRICTED TO
0 PLC ± -		A3	00779	C=1734510	
1 PLC ± -		CUSTOMER DRAWING			
2 PLC ± -		SCALE			
3 PLC ± -		SHEET 2 of 2			
4 PLC ± -		REV C			
ANGLES ± -					
FINISH					
MATERIAL					

# Mouser Electronics

Authorized Distributor

Click to View Pricing, Inventory, Delivery & Lifecycle Information:

[TE Connectivity:](#)

[1734510-1](#)