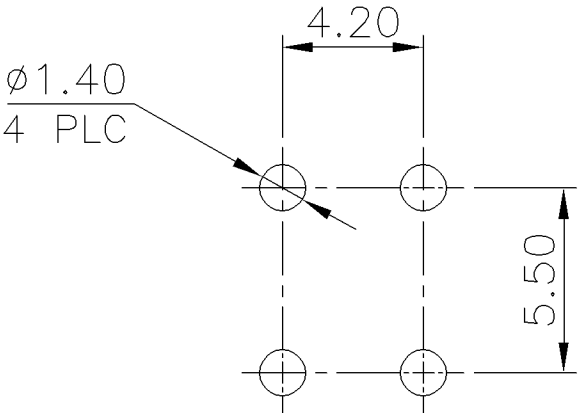


LOC	DIST	REVISIONS				
DW	—	P	LTR	DESCRIPTION	DATE	APVD
			C	REVISED (ECR-10-025182, CHANGE TO MATTE-TIN)	31JAN'11	EL WK

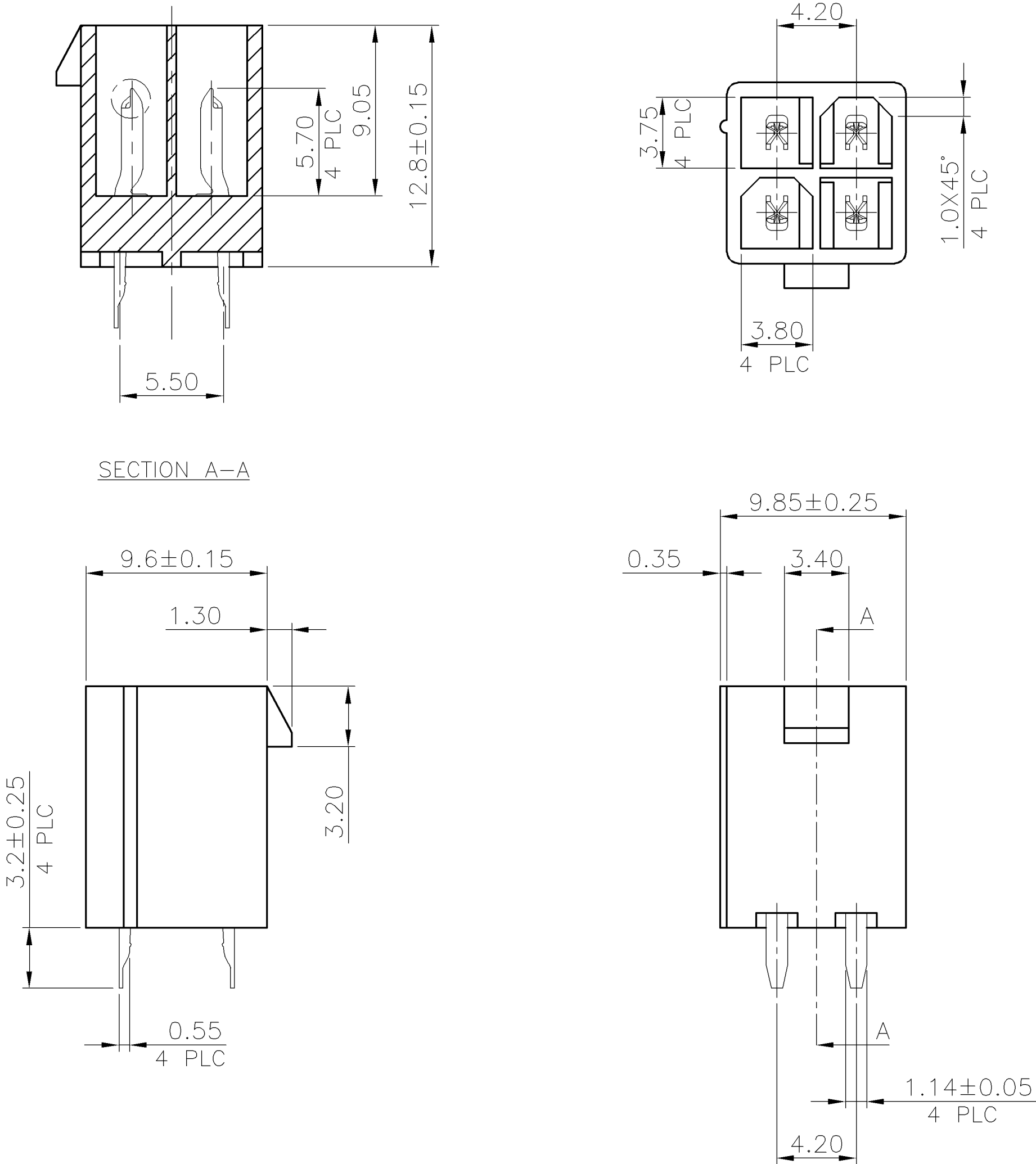
NOTE:

- 1.MATERIAL:
HOUSING: PA46 UL 94V-0, COLOR: (SEE TABLE).
CONTACTS: BRASS.
2. FINISH:
CONTACTS: 3.05um [120u"] MIN. MATTE-TIN
1.27um [50u"] MIN. NICKEL UNDERPLATED ALL OVER.
3. WAVE SOLDER CAPABLE TO 265°C PER TEST SPEC.
109-202, CONDITION B.
4. WEIGHT: SEE TABLE.
- 5 OBSOLETE PARTS: OBSOLETE CIS STREAMLINING PER D.RENAUD/D.SINISI


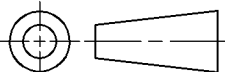


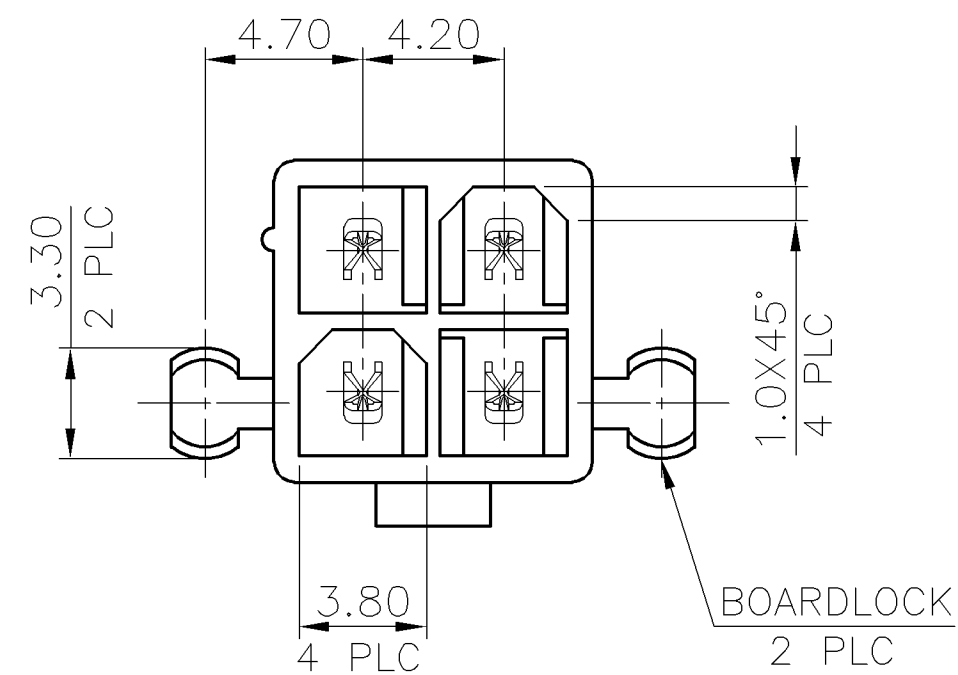
RECOMMENDED PCB LAYOUT(T=1.6MM)
(TOLERANCE: ±0.05)

5	OBSOLETE	1.18	W/O	W/	NATURAL	1734385-8
					IVORY (WARM GRAY 1U)	1734385-7
	OBSOLETE 5	1.18	W/	W/O	NATURAL	1734385-6
					IVORY (WARM GRAY 1U)	1734385-5
		1.21	W/	W/	NATURAL	1734385-4
					IVORY (WARM GRAY 1U)	1734385-3
5	OBSOLETE	1.15	W/O	W/O	NATURAL	1734385-2
					IVORY (WARM GRAY 1U)	1734385-1
		NET WEIGHT gm/PCS	LEFT RIGHT		HSG.COLOR	PART NUMBER
			BOARDLOCK			

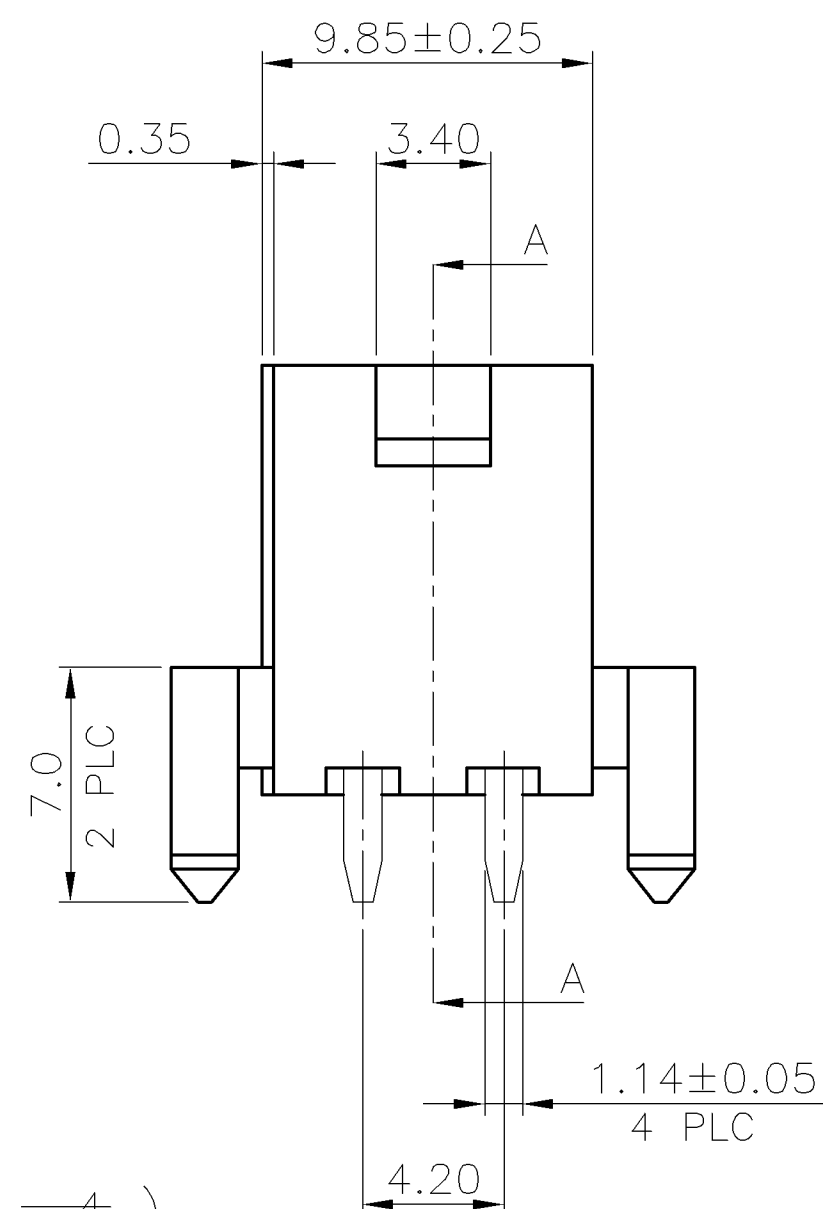
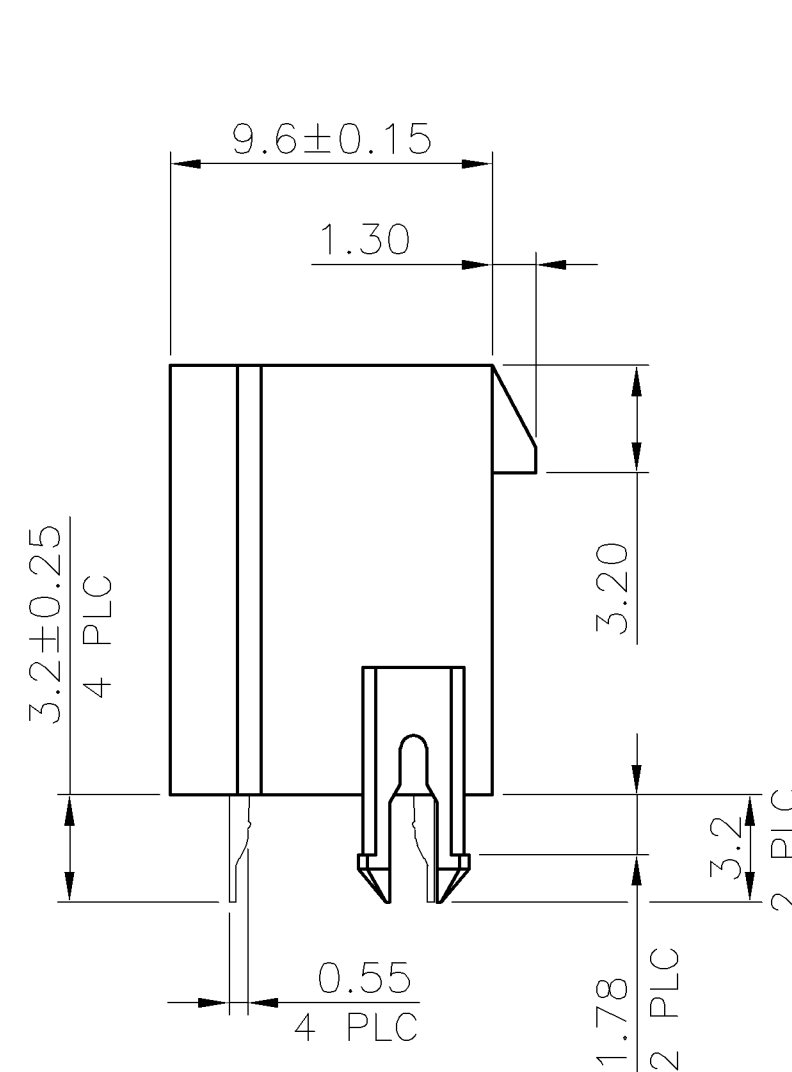


5 (FOR -1 AND -2)

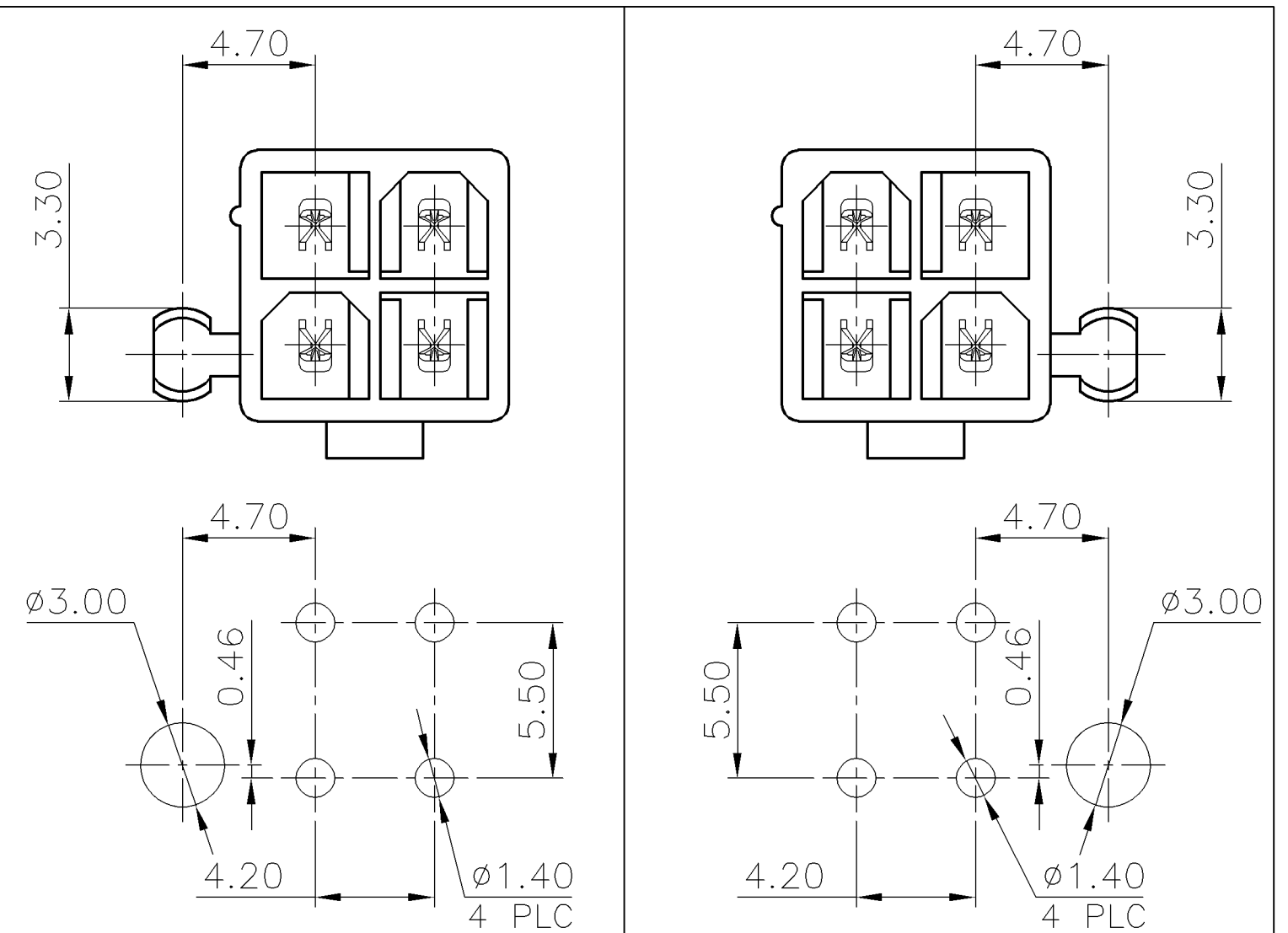
THIS DRAWING IS A CONTROLLED DOCUMENT.		DWN B. HSING 28JUL2009		 Tyco Electronics Corporation Taipei, Taiwan			
		CHK S. CHIEN 28JUL2009					
DIMENSIONS: MM		TOLERANCES UNLESS OTHERWISE SPECIFIED: 0 PLC ± - 1 PLC ± 0.30 2 PLC ± 0.20 3 PLC ± 0.15 4 PLC ± - ANGLES ± 3'		APVD W. KODAMA 28JUL2009		NAME	
				PRODUCT SPEC 108-57394		ATX POWER CONNECTOR, 4 POSITION,DIP	
				APPLICATION SPEC 501-57426			
				WEIGHT SEE TABLE			
				CUSTOMER DRAWING			
MATERIAL SEE NOTE		FINISH SEE NOTE		SIZE A3	CAGE CODE 00779	DRAWING NO C=1734385	RESTRICTED TO —
				SCALE —		SHEET 1 OF 3	REV C



SECTION A-A



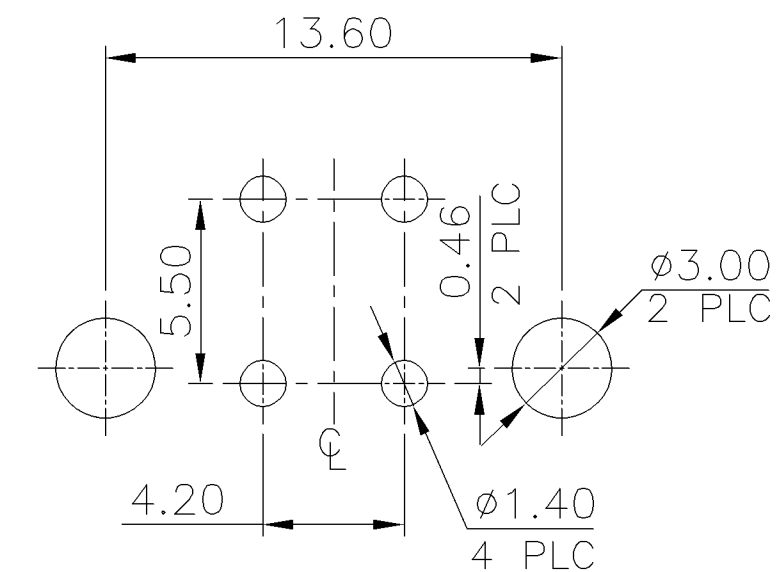
\triangle_5 (FOR -3 AND -4)



5 LEFT BOARDLOCK FOR ~~-5~~ & -6

5	RIGHT BOARDLOCK FOR -7 & -8
---	---------------------------------

RECOMMENDED PCB LAYOUT(T=1.6MM)



RECOMMENDED PCB LAYOUT(T=1.6MM)

(TOLERANCE: ± 0.05)

CUSTOMER DRAWING

	SCALE —	SHEET 2 OF 3	REV C
--	---------	--------------	-------

SEE NOTE

SEE NOTE

CUSTOMER DRAWING

	SCALE —	SHEET 2 OF 3	REV C
--	---------	--------------	-------

3.QUANTITY: SEE TABLE.

BOX

TRAY

10 TRAY

6.56	4.96	420	10	4200	W/O	W/
6.56	4.96	420	10	4200	W/	W/O
5.96	4.36	360	10	3600	W/	W/
7.12	5.52	480	10	4800	W/O	W/O
GROSS WEIGHT	NET WEIGHT	PCS /TRAY	TRAYS /BOX	PCS /BOX	LEFT	RIGHT
					BOARDLOCK	

SEE TABLE

CUSTOMER DRAWING

	MATERIAL
1	100% COTTON T-SHIRT
2	100% COTTON T-SHIRT
3	100% COTTON T-SHIRT
4	100% COTTON T-SHIRT
5	100% COTTON T-SHIRT
6	100% COTTON T-SHIRT
7	100% COTTON T-SHIRT
8	100% COTTON T-SHIRT
9	100% COTTON T-SHIRT
10	100% COTTON T-SHIRT
11	100% COTTON T-SHIRT
12	100% COTTON T-SHIRT
13	100% COTTON T-SHIRT
14	100% COTTON T-SHIRT
15	100% COTTON T-SHIRT
16	100% COTTON T-SHIRT
17	100% COTTON T-SHIRT
18	100% COTTON T-SHIRT
19	100% COTTON T-SHIRT
20	100% COTTON T-SHIRT
21	100% COTTON T-SHIRT
22	100% COTTON T-SHIRT
23	100% COTTON T-SHIRT
24	100% COTTON T-SHIRT
25	100% COTTON T-SHIRT
26	100% COTTON T-SHIRT
27	100% COTTON T-SHIRT
28	100% COTTON T-SHIRT
29	100% COTTON T-SHIRT
30	100% COTTON T-SHIRT
31	100% COTTON T-SHIRT
32	100% COTTON T-SHIRT
33	100% COTTON T-SHIRT
34	100% COTTON T-SHIRT
35	100% COTTON T-SHIRT
36	100% COTTON T-SHIRT
37	100% COTTON T-SHIRT
38	100% COTTON T-SHIRT
39	100% COTTON T-SHIRT
40	100% COTTON T-SHIRT
41	100% COTTON T-SHIRT
42	100% COTTON T-SHIRT
43	100% COTTON T-SHIRT
44	100% COTTON T-SHIRT
45	100% COTTON T-SHIRT
46	100% COTTON T-SHIRT
47	100% COTTON T-SHIRT
48	100% COTTON T-SHIRT
49	100% COTTON T-SHIRT
50	100% COTTON T-SHIRT
51	100% COTTON T-SHIRT
52	100% COTTON T-SHIRT
53	100% COTTON T-SHIRT
54	100% COTTON T-SHIRT
55	100% COTTON T-SHIRT
56	100% COTTON T-SHIRT
57	100% COTTON T-SHIRT
58	100% COTTON T-SHIRT
59	100% COTTON T-SHIRT
60	100% COTTON T-SHIRT
61	100% COTTON T-SHIRT
62	100% COTTON T-SHIRT
63	100% COTTON T-SHIRT
64	100% COTTON T-SHIRT
65	100% COTTON T-SHIRT
66	100% COTTON T-SHIRT
67	100% COTTON T-SHIRT
68	100% COTTON T-SHIRT
69	100% COTTON T-SHIRT
70	100% COTTON T-SHIRT
71	100% COTTON T-SHIRT
72	100% COTTON T-SHIRT
73	100% COTTON T-SHIRT
74	100% COTTON T-SHIRT
75	100% COTTON T-SHIRT
76	100% COTTON T-SHIRT
77	100% COTTON T-SHIRT
78	100% COTTON T-SHIRT
79	100% COTTON T-SHIRT
80	100% COTTON T-SHIRT
81	100% COTTON T-SHIRT
82	100% COTTON T-SHIRT
83	100% COTTON T-SHIRT
84	100% COTTON T-SHIRT
85	100% COTTON T-SHIRT
86	100% COTTON T-SHIRT
87	100% COTTON T-SHIRT
88	100% COTTON T-SHIRT
89	100% COTTON T-SHIRT
90	100% COTTON T-SHIRT
91	100% COTTON T-SHIRT
92	100% COTTON T-SHIRT
93	100% COTTON T-SHIRT
94	100% COTTON T-SHIRT
95	100% COTTON T-SHIRT
96	100% COTTON T-SHIRT
97	100% COTTON T-SHIRT
98	100% COTTON T-SHIRT
99	100% COTTON T-SHIRT
100	100% COTTON T-SHIRT

SEE NOTE

0	PLC	$\pm -$
1	PLC	± 0.30
2	PLC	± 0.20
3	PLC	± 0.15
4	PLC	$\pm -$

	ANGLES
	FINISH

SEE NOTE

Tyco Electronics

Taipei, Taiwan

1

	SIZE
--	------

CAGE CODE

E	DRAWING NO
---	------------

9 | C-1734385

RESTRICTED ~~TO~~

SCALE

SHEET

3 OF 3

	REV
--	-----

[illegible]

Mouser Electronics

Authorized Distributor

Click to View Pricing, Inventory, Delivery & Lifecycle Information:

[TE Connectivity:](#)

[1734385-6](#)