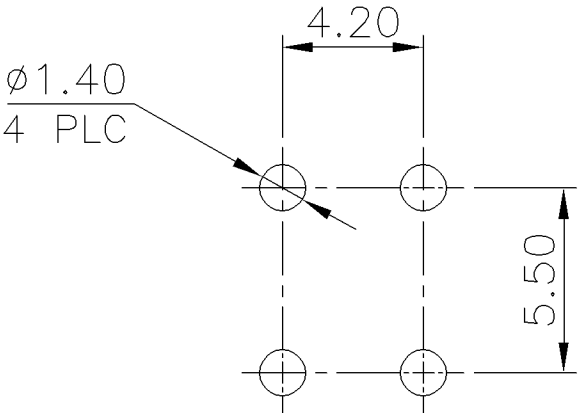


LOC	DIST	REVISIONS				
DW	—	P	LTR	DESCRIPTION	DATE	APVD
			C	REVISED (ECR-10-025182, CHANGE TO MATTE-TIN)	31JAN'11	EL WK

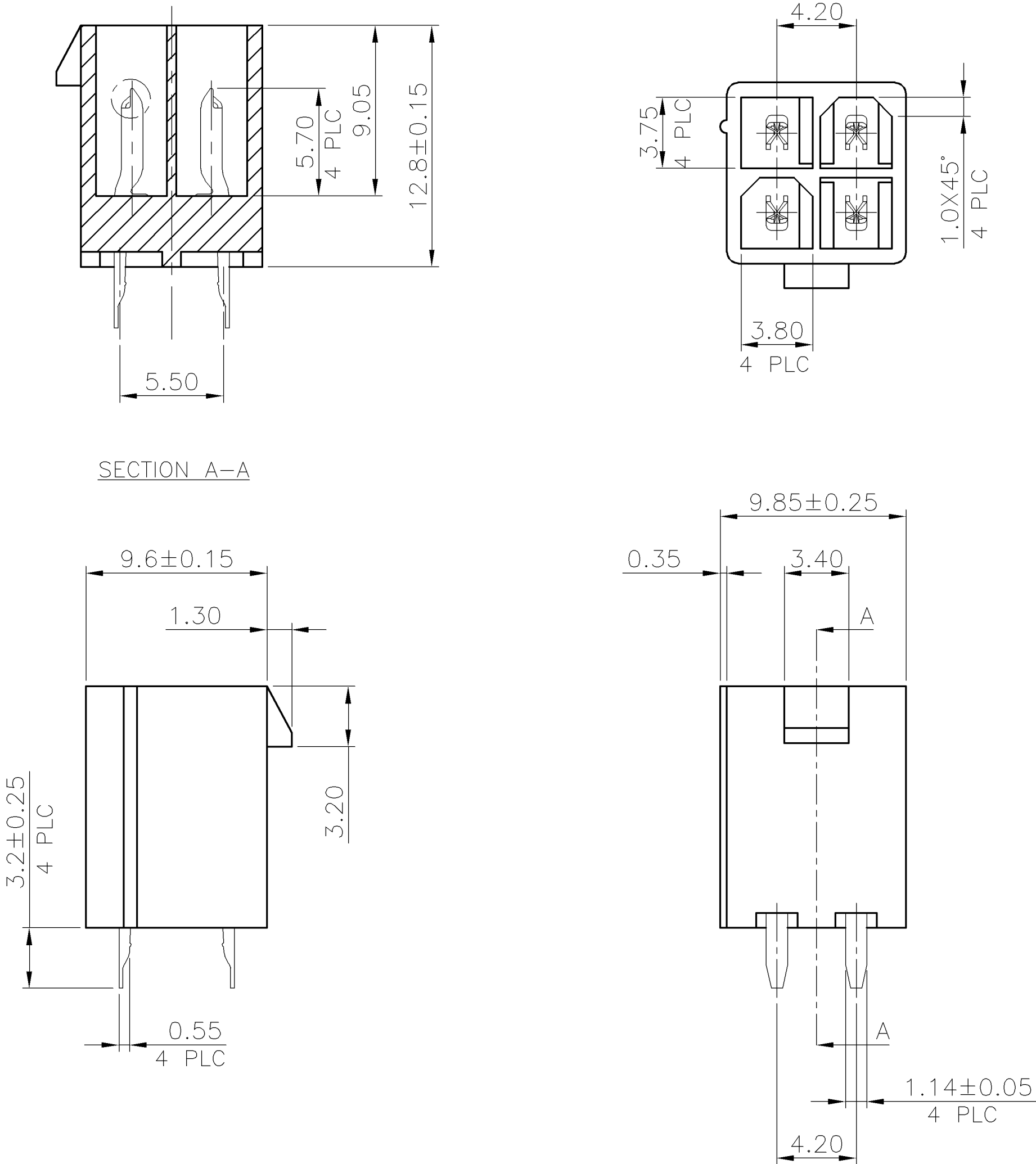
NOTE:

- 1.MATERIAL:
HOUSING: PA46 UL 94V-0, COLOR: (SEE TABLE).
CONTACTS: BRASS.
2. FINISH:
CONTACTS: 3.05um [120u"] MIN. MATTE-TIN
1.27um [50u"] MIN. NICKEL UNDERPLATED ALL OVER.
3. WAVE SOLDER CAPABLE TO 265°C PER TEST SPEC.
109-202, CONDITION B.
4. WEIGHT: SEE TABLE.
- 5 OBSOLETE PARTS: OBSOLETE CIS STREAMLINING PER D.RENAUD/D.SINISI


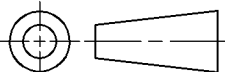


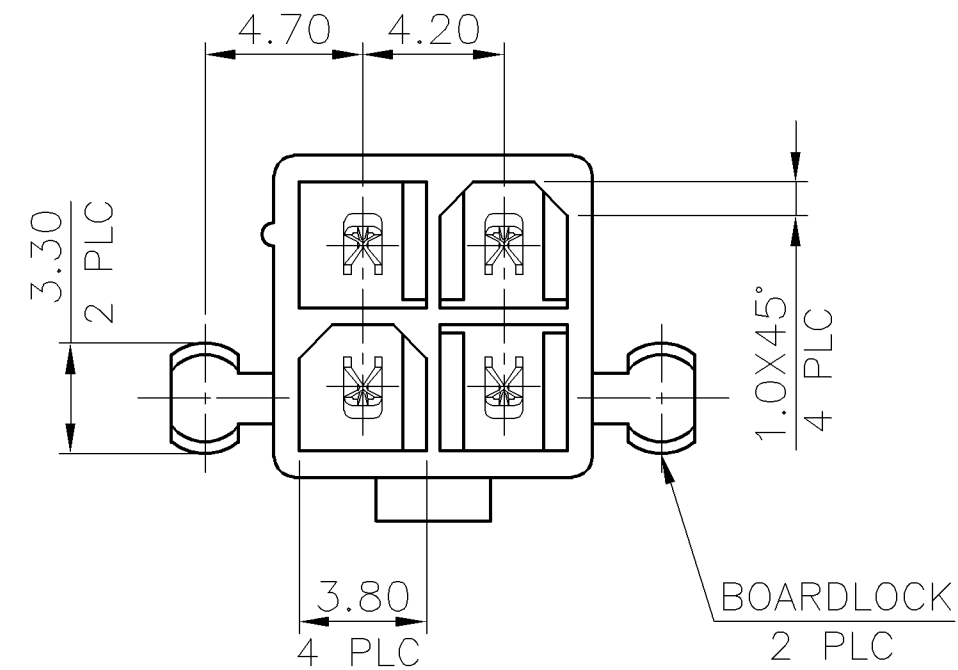
RECOMMENDED PCB LAYOUT(T=1.6MM)
(TOLERANCE: ±0.05)

<div>5</div>	OBSOLETE	1.18	W/O	W/	NATURAL	1734385-8
					IVORY (WARM GRAY 1U)	1734385-7
<div>5</div>	OBSOLETE	1.18	W/	W/O	NATURAL	1734385-6
					IVORY (WARM GRAY 1U)	<div></div>
		1.21	W/	W/	NATURAL	1734385-4
					IVORY (WARM GRAY 1U)	<div></div>
<div>5</div>	OBSOLETE	1.15	W/O	W/O	NATURAL	1734385-2
					IVORY (WARM GRAY 1U)	1734385-1
		NET WEIGHT gm/PCS	LEFT RIGHT		HSG.COLOR	PART NUMBER
			BOARDLOCK			

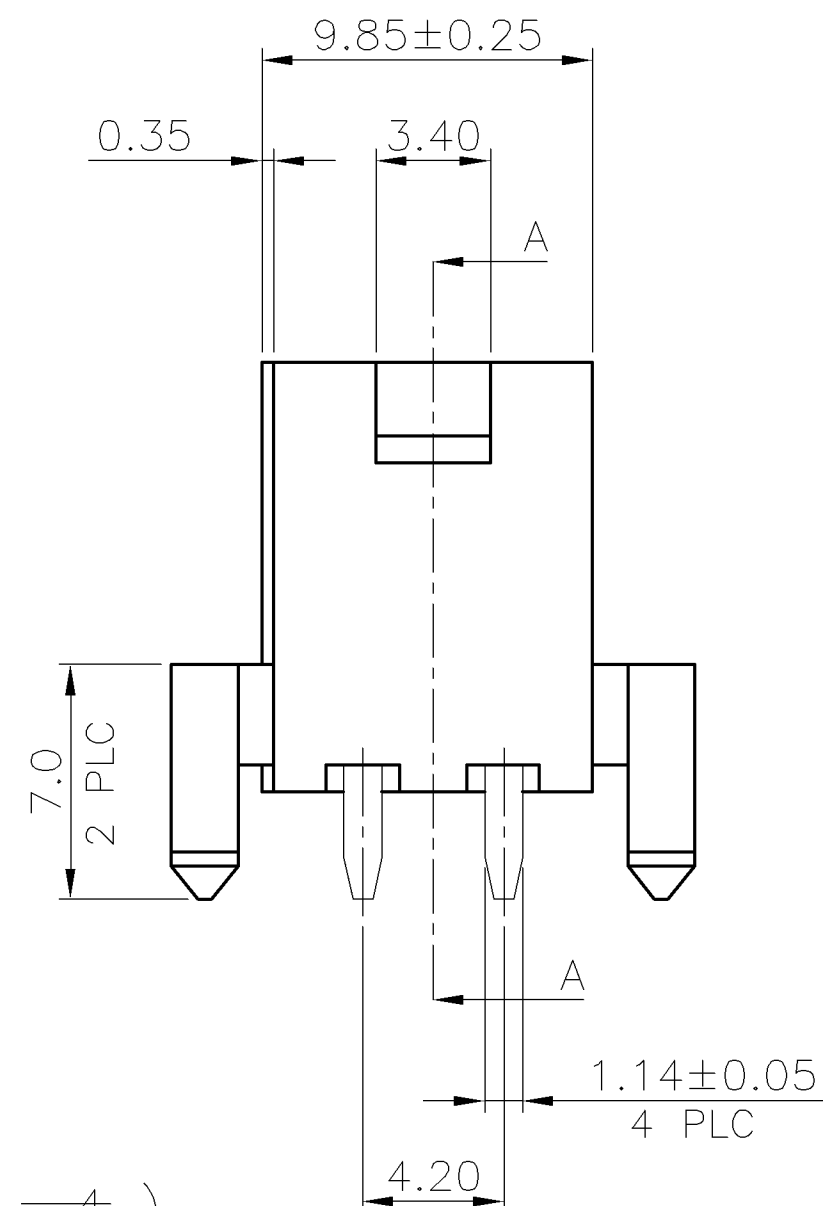
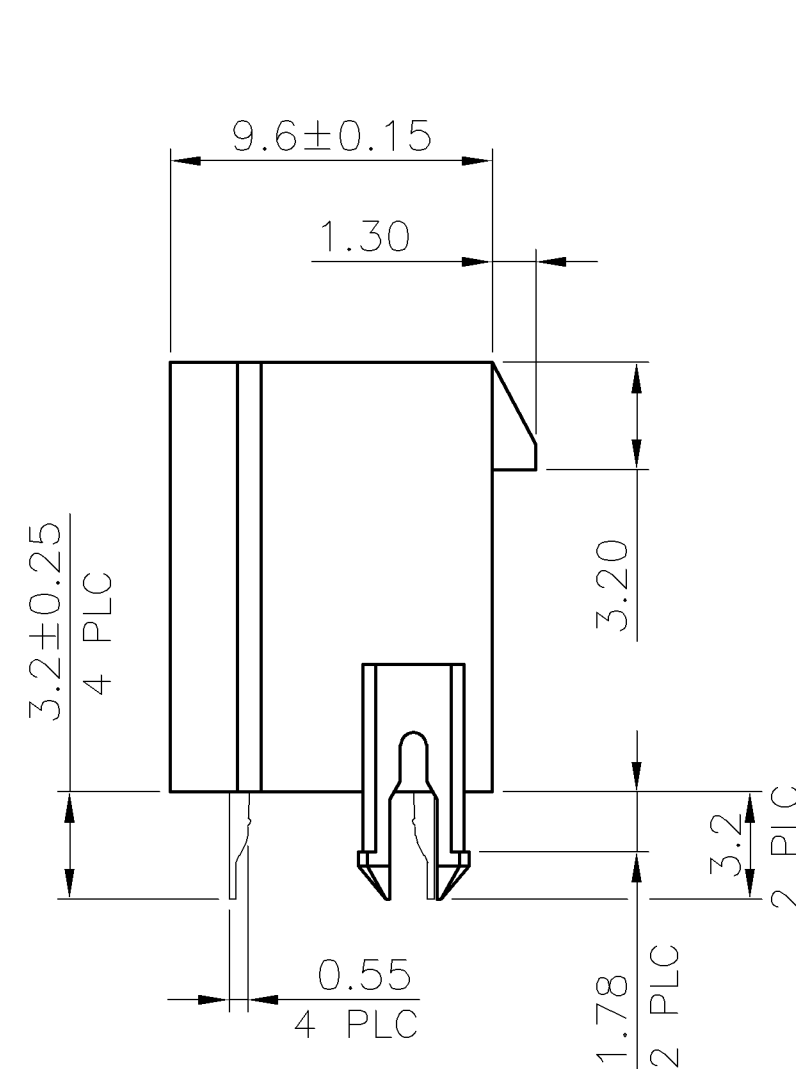


5 (FOR -1 AND -2)

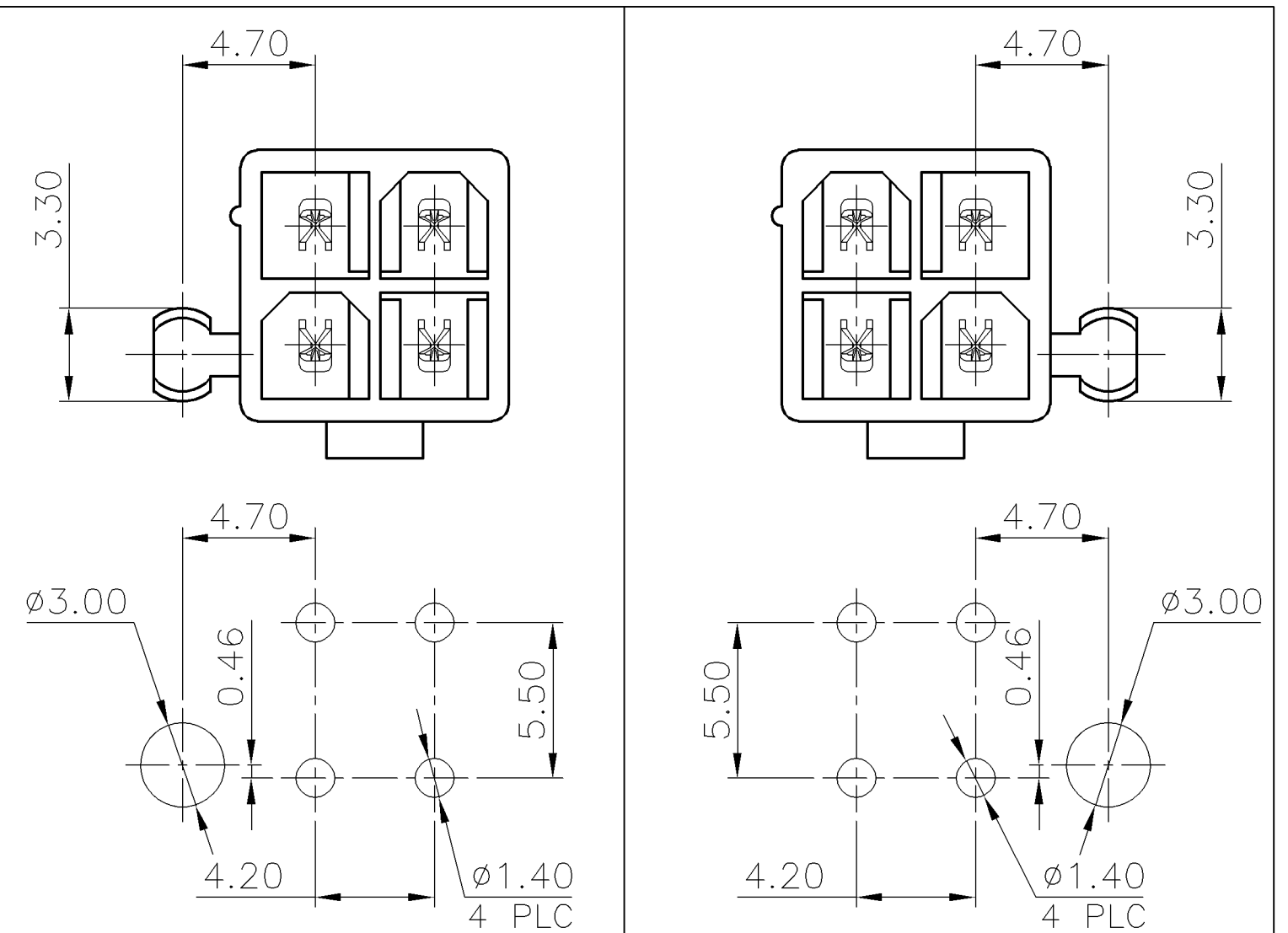
THIS DRAWING IS A CONTROLLED DOCUMENT.		DWN B. HSING 28JUL2009		 Tyco Electronics Tyco Electronics Corporation Taipei, Taiwan						
		CHK S. CHIEN 28JUL2009								
DIMENSIONS: MM		TOLERANCES UNLESS OTHERWISE SPECIFIED: 0 PLC ± - 1 PLC ± 0.30 2 PLC ± 0.20 3 PLC ± 0.15 4 PLC ± - ANGLES ± 3'		APVD W. KODAMA 28JUL2009		NAME				
				PRODUCT SPEC 108-57394		ATX POWER CONNECTOR, 4 POSITION,DIP				
				APPLICATION SPEC 501-57426						
				SIZE				CAGE CODE	DRAWING NO	RESTRICTED TO
				WEIGHT				A3 00779		
MATERIAL SEE NOTE		FINISH SEE NOTE		CUSTOMER DRAWING		SCALE	SHEET	1 OF 3	REV	C



SECTION A-A

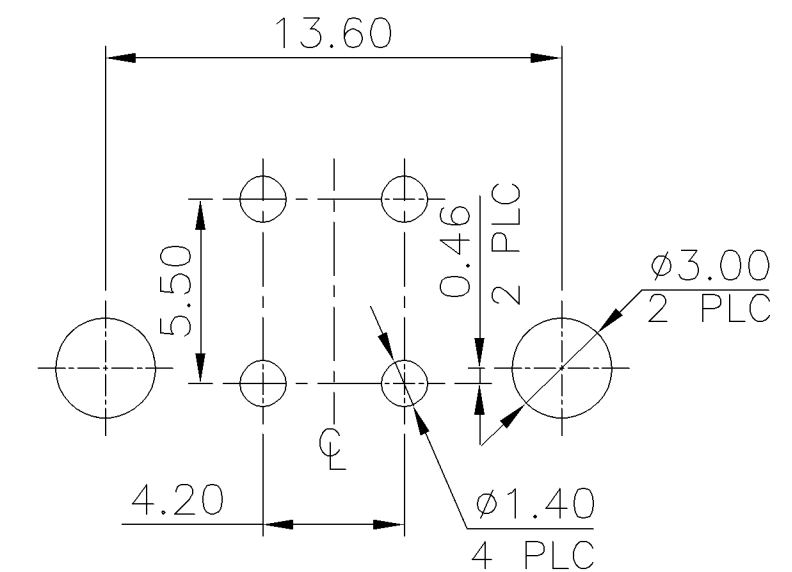


\triangle_5 (FOR -3 AND -4)



5 LEFT BOARDLOCK FOR -5 & -6	5 RIGHT BOARDLOCK FOR -7 & -8
----------------------------------	-----------------------------------

RECOMMENDED PCB LAYOUT(T=1.6MM)



RECOMMENDED PCB LAYOUT(T=1.6MM)

(TOLERANCE: ± 0.05)

CUSTOMER DRAWING

7	REV	C
---	-----	---

AMP 1470-19 REV 31MAR2000

3.QUANTITY: SEE TABLE.

BOX

TRAY

10 TRAY

6.56	4.96	420	10	4200	W/O	W/
6.56	4.96	420	10	4200	W/	W/O
5.96	4.36	360	10	3600	W/	W/
7.12	5.52	480	10	4800	W/O	W/O
GROSS WEIGHT	NET WEIGHT	PCS /TRAY	TRAYS /BOX	PCS /BOX	LEFT	RIGHT
					BOARDLOCK	

SEE TABLE

CUSTOMER DRAWING

SEE NOTE

0	PLC	$\pm -$
1	PLC	± 0.30
2	PLC	± 0.20
3	PLC	± 0.15
4	PLC	$\pm -$

SEE NOTE

Tyco Electronics

Taipei, Taiwan

ATX POWER CONNECTOR,
4 POSITION,DIP

RESTRICTED TO

A5

3|00779

9 | C-1734385

	SCALE
--	-------

SHEET

3 OF 3

REV	C
-----	---

Mouser Electronics

Authorized Distributor

Click to View Pricing, Inventory, Delivery & Lifecycle Information:

[TE Connectivity:](#)

[1734385-8](#)