

NOTES:
 1.SOLDER DIP:STATIONARY TERMINAL AND MOVABLE SPRING COIL TERMINAL and COIL TERMINAL TO MAGNETIC WIRE
 2.ONE CHARACTER DISTINGUISH THE LINE IDENTITY, SUCH AS: A, B...
 3.TERMINAL DIMENSION IS BEFORE SOLDER DIP.
 4.FOR THE TIN-PLATING OF THE PINS:
 +0.1mm FOR WIDTH,THICKNESS AND DIAMETER.
 +0.5mm FOR LENGTH.
 5.MARKING FROM INK CHANGE TO LASER
 6.ADD LOT NO. SYSTEM AS FOLLOWING;

1 1 A
 I II III
 I. DIGITS FOR DAY OF THE WEEK
 1...MONDAY IN THIS WEEK;
 2...TUESDAY IN THIS WEEK;

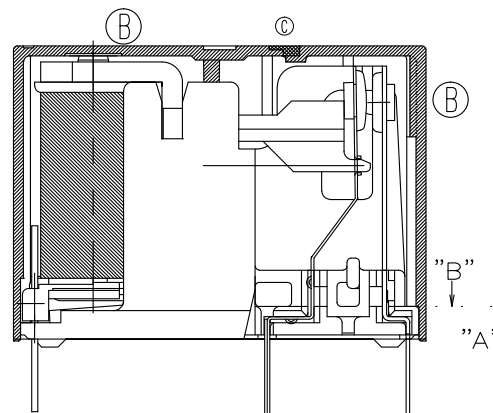
 7...SUNDAY IN THIS WEEK
 II. DIGITS FOR SHIFT OF THE DAY
 1...DAY SHIFT IN THIS DAY;
 2...NIGHT SHIFT IN THIS DAY;
 III. ONE CHARACTER DISTINGUISH THE LINE IDENTITY, SUCH AS: A,B.....Z

| DIAGRAM DIMENSION | TOLERANCE |
|-------------------|-----------|
| 0.99mm max. | ±0.1mm |
| 1 - 2.99mm | ±0.2mm |
| 3mm min. | ±0.3mm |

THIS DRAWING IS A CONTROLLED DOCUMENT.

| | | | |
|-------------------|---|--|---|
| DIMENSIONS: mm | TOLERANCES UNLESS OTHERWISE SPECIFIED: 0 PLC ± 1 PLC ± 2 PLC ± 3 PLC ± 4 PLC ± ANGLES ± | DWN H.SASAKI CHK Y.OIKAWA APVD A.NAGAI PRODUCT SPEC APPLICATION SPEC WEIGHT CUSTOMER DRAWING | NAME PCJ SPEC ,301 SIZE CAGE CODE DRAWING NO A3 00779 C=1721081 SCALE 5:1 SHEET 1 of 3 REV D1 |
| MATERIAL | FINISH | RESTRICTED TO | |

Ⓑ CHANGE CASE,CORE,YOKE : REV_A ==> B



| | | | | | |
|--|--|------------------|--|-------------------------------|--|
| THIS DRAWING IS A CONTROLLED DOCUMENT. | | DWN H.SAKAKI | | TE Connectivity | |
| DIMENSIONS: mm | | CHK Y.OIKAWA | | | |
| TOLERANCES UNLESS OTHERWISE SPECIFIED: | | APVD A.NAGAI | | NAME | |
| 0 PLC ± | | PRODUCT SPEC | | PCJ SPEC ,301 | |
| 1 PLC ± | | APPLICATION SPEC | | SIZE CAGE CODE DRAWING NO | |
| 2 PLC ± | | WEIGHT | | A3 00779 C=1721081 | |
| 3 PLC ± | | CUSTOMER DRAWING | | RESTRICTED TO | |
| 4 PLC ± | | | | SCALE 5:1 SHEET 2 of 3 REV D1 | |
| MATERIAL | | FINISH | | | |

THIS DRAWING IS UNPUBLISHED.
RELEASED FOR PUBLICATION
© COPYRIGHT - By TE Connectivity
ALL RIGHTS RESERVED.

| LOC | | DIST | | REVISIONS | | | |
|-----|--|------|--|-------------|-----|-------------|------|
| HB | | — | | P | LTR | DESCRIPTION | DATE |
| | | | | | | — | — |
| | | | | SEE SHEET 1 | | | |
| | | | | — | | | |

01

| | | | | | |
|----|------------------|-------------|-----------------------|--------|-------------|
| N | PCJ-12403MH,301S | 2-1721081-8 | 107-79053 (TUBE) | 24V | PCJ-12403MH |
| M | PCJ-11803MH,301S | 2-1721081-7 | 107-79053 (TUBE) | 18V | PCJ-11803MH |
| L | PCJ-11203MH,301S | 2-1721081-6 | 107-79053 (TUBE) | 12V | PCJ-11203MH |
| K | PCJ-10903MH,301S | 2-1721081-5 | 107-79053 (TUBE) | 9V | PCJ-10903MH |
| J | PCJ-10603MH,301S | 2-1721081-4 | 107-79053 (TUBE) | 6V | PCJ-10603MH |
| I | PCJ-10503MH,301S | 2-1721081-3 | 107-79053 (TUBE) | 5V | PCJ-10503MH |
| H | PCJ-10303MH,301S | 2-1721081-2 | 107-79053 (TUBE) | 3V | PCJ-10303MH |
| G | PCJ-12403M,301S | 2-1721081-1 | 107-79053 (TUBE) | 24V | PCJ-12403M |
| F | PCJ-11803M,301S | 2-1721081-0 | 107-79053 (TUBE) | 18V | PCJ-11803M |
| E | PCJ-11203M,301S | 1-1721081-9 | 107-79053 (TUBE) | 12V | PCJ-11203M |
| D | PCJ-10903M,301S | 1-1721081-8 | 107-79053 (TUBE) | 9V | PCJ-10903M |
| C | PCJ-10603M,301S | 1-1721081-7 | 107-79053 (TUBE) | 6V | PCJ-10603M |
| B | PCJ-10503M,301S | 1-1721081-6 | 107-79053 (TUBE) | 5V | PCJ-10503M |
| A | PCJ-10303M,301S | 1-1721081-5 | 107-79053 (TUBE) | 3V | PCJ-10303M |
| n | PCJ-12403MH,301 | 1-1721081-4 | 107-79014 (TRAY) | 24V | PCJ-12403MH |
| m | PCJ-11803MH,301 | 1-1721081-3 | 107-79014 (TRAY) | 18V | PCJ-11803MH |
| l | PCJ-11203MH,301 | 1-1721081-2 | 107-79014 (TRAY) | 12V | PCJ-11203MH |
| k | PCJ-10903MH,301 | 1-1721081-1 | 107-79014 (TRAY) | 9V | PCJ-10903MH |
| j | PCJ-10603MH,301 | 1-1721081-0 | 107-79014 (TRAY) | 6V | PCJ-10603MH |
| i | PCJ-10503MH,301 | 1721081-9 | 107-79014 (TRAY) | 5V | PCJ-10503MH |
| h | PCJ-10303MH,301 | 1721081-8 | 107-79014 (TRAY) | 3V | PCJ-10303MH |
| g | PCJ-12403M,301 | 1721081-7 | 107-79014 (TRAY) | 24V | PCJ-12403M |
| f | PCJ-11803M,301 | 1721081-6 | 107-79014 (TRAY) | 18V | PCJ-11803M |
| e | PCJ-11203M,301 | 1721081-5 | 107-79014 (TRAY) | 12V | PCJ-11203M |
| d | PCJ-10903M,301 | 1721081-4 | 107-79014 (TRAY) | 9V | PCJ-10903M |
| c | PCJ-10603M,301 | 1721081-3 | 107-79014 (TRAY) | 6V | PCJ-10603M |
| b | PCJ-10503M,301 | 1721081-2 | 107-79014 (TRAY) | 5V | PCJ-10503M |
| a | PCJ-10303M,301 | 1721081-1 | 107-79014 (TRAY) | 3V | PCJ-10303M |
| No | DESCRIPTION | TE PART NO | PACKING SPECIFICATION | PART B | PART A |

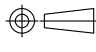
RELAY TYPE

A

| | | | | | |
|----|------------------|-------------|-----------------------|--------|-------------|
| nn | PCJ-12403MH,301M | 4-1721081-2 | 107-79048 (TUBE) | 24V | PCJ-12403MH |
| mm | PCJ-11803MH,301M | 4-1721081-1 | 107-79048 (TUBE) | 18V | PCJ-11803MH |
| ll | PCJ-11203MH,301M | 4-1721081-0 | 107-79048 (TUBE) | 12V | PCJ-11203MH |
| kk | PCJ-10903MH,301M | 3-1721081-9 | 107-79048 (TUBE) | 9V | PCJ-10903MH |
| jj | PCJ-10603MH,301M | 3-1721081-8 | 107-79048 (TUBE) | 6V | PCJ-10603MH |
| ii | PCJ-10503MH,301M | 3-1721081-7 | 107-79048 (TUBE) | 5V | PCJ-10503MH |
| hh | PCJ-10303MH,301M | 3-1721081-6 | 107-79048 (TUBE) | 3V | PCJ-10303MH |
| gg | PCJ-12403M,301M | 3-1721081-5 | 107-79048 (TUBE) | 24V | PCJ-12403M |
| ff | PCJ-11803M,301M | 3-1721081-4 | 107-79048 (TUBE) | 18V | PCJ-11803M |
| ee | PCJ-11203M,301M | 3-1721081-3 | 107-79048 (TUBE) | 12V | PCJ-11203M |
| dd | PCJ-10903M,301M | 3-1721081-2 | 107-79048 (TUBE) | 9V | PCJ-10903M |
| cc | PCJ-10603M,301M | 3-1721081-1 | 107-79048 (TUBE) | 6V | PCJ-10603M |
| bb | PCJ-10503M,301M | 3-1721081-0 | 107-79048 (TUBE) | 5V | PCJ-10503M |
| aa | PCJ-10303M,301M | 2-1721081-9 | 107-79048 (TUBE) | 3V | PCJ-10303M |
| No | DESCRIPTION | TE PART NO | PACKING SPECIFICATION | PART B | PART A |

A RELAY TYPE

| | | | | |
|------------------|------------|-----------|--------------------------------|------|
| | | Sn-Ag-Cu | SOLDER | 18 |
| 94V-0 | | PBT | CASE | 17 |
| | | UV | SEAL(CASE) JUST FOR WASH TIGHT | 16 |
| | | EPOXY | SEAL(CASE AND BASE) | 15 |
| | | 3JEW | MAGNETIC WIRE | 14 |
| 94V-0 | | PBT | CARD | 13 |
| | | Ag ALLOY | STATIONARY CONTACT | 12 |
| | SOLDER DIP | Cu ALLOY | STATIONARY TERMINAL | 11 |
| | | Ag ALLOY | MOVABLE CONTACT | 10 |
| | SOLDER DIP | Cu ALLOY | MOVABLE SPRING | 9 |
| 94V-0 | | PBT | BASE | 8 |
| | | STAINLESS | HINGE SPRING | 7 |
| | NIP | STEEL | ARMATURE | 6 |
| | NIP | STEEL | CORE | 5 |
| | NIP | STEEL | YOKE | 4 |
| | SOLDER DIP | Cu ALLOY | COIL TERMINAL B | 3 |
| | SOLDER DIP | Cu ALLOY | COIL TERMINAL A | 2 |
| 94V-0 | | PBT | BOBBIN | 1 |
| INCOMBUSTIBILITY | TREATMENT | MATERIAL | DESCRIPTION | ITEM |

| | | | |
|---|--|-------------------------------|--|
| THIS DRAWING IS A CONTROLLED DOCUMENT. | | DWN H.SASAKI | |
| DIMENSIONS: mm | | CHK Y.OIKAWA | |
|  | | APVD A.NAGAI | |
| TOLERANCES UNLESS OTHERWISE SPECIFIED: 0 PLC ±— 1 PLC ±— 2 PLC ±— 3 PLC ±— 4 PLC ±— ANGLES ±— | | PRODUCT SPEC — | |
| MATERIAL — | | APPLICATION SPEC — | |
| FINISH — | | WEIGHT — | |
| | | CUSTOMER DRAWING | |
| | | NAME | |
| | | PCJ SPEC ,301 | |
| | | SIZE CAGE CODE DRAWING NO | |
| | | A3 00779 C=1721081 | |
| | | RESTRICTED TO | |
| | | — | |
| | | SCALE 5:1 SHEET 3 of 3 REV D1 | |

Mouser Electronics

Authorized Distributor

Click to View Pricing, Inventory, Delivery & Lifecycle Information:

[TE Connectivity:](#)

[1721081-5](#)