

THIS DRAWING IS UNPUBLISHED.

RELEASED FOR PUBLICATION

OCT , 2003.

© COPYRIGHT 2003 By -

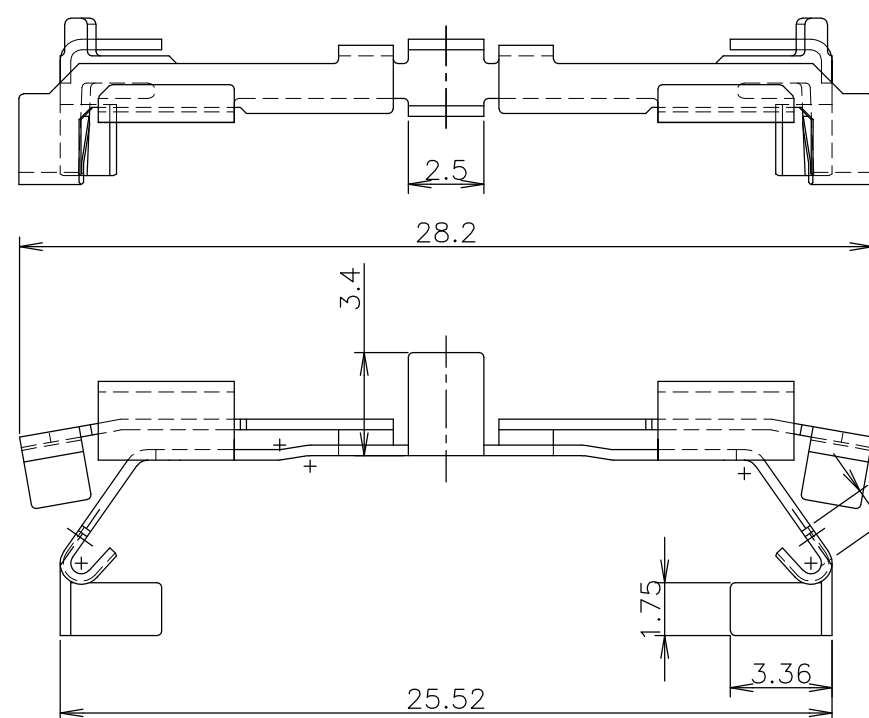
ALL RIGHTS RESERVED.

LOC
J

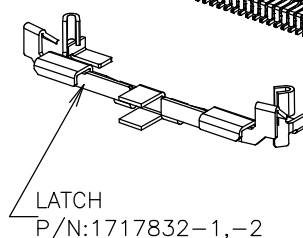
DIST

REVISIONS

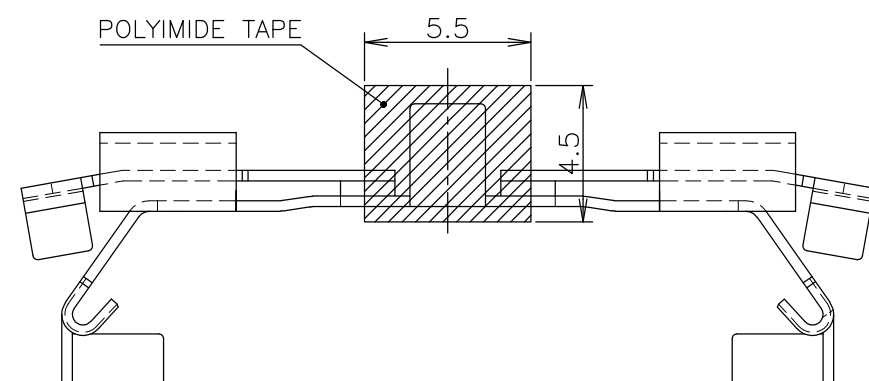
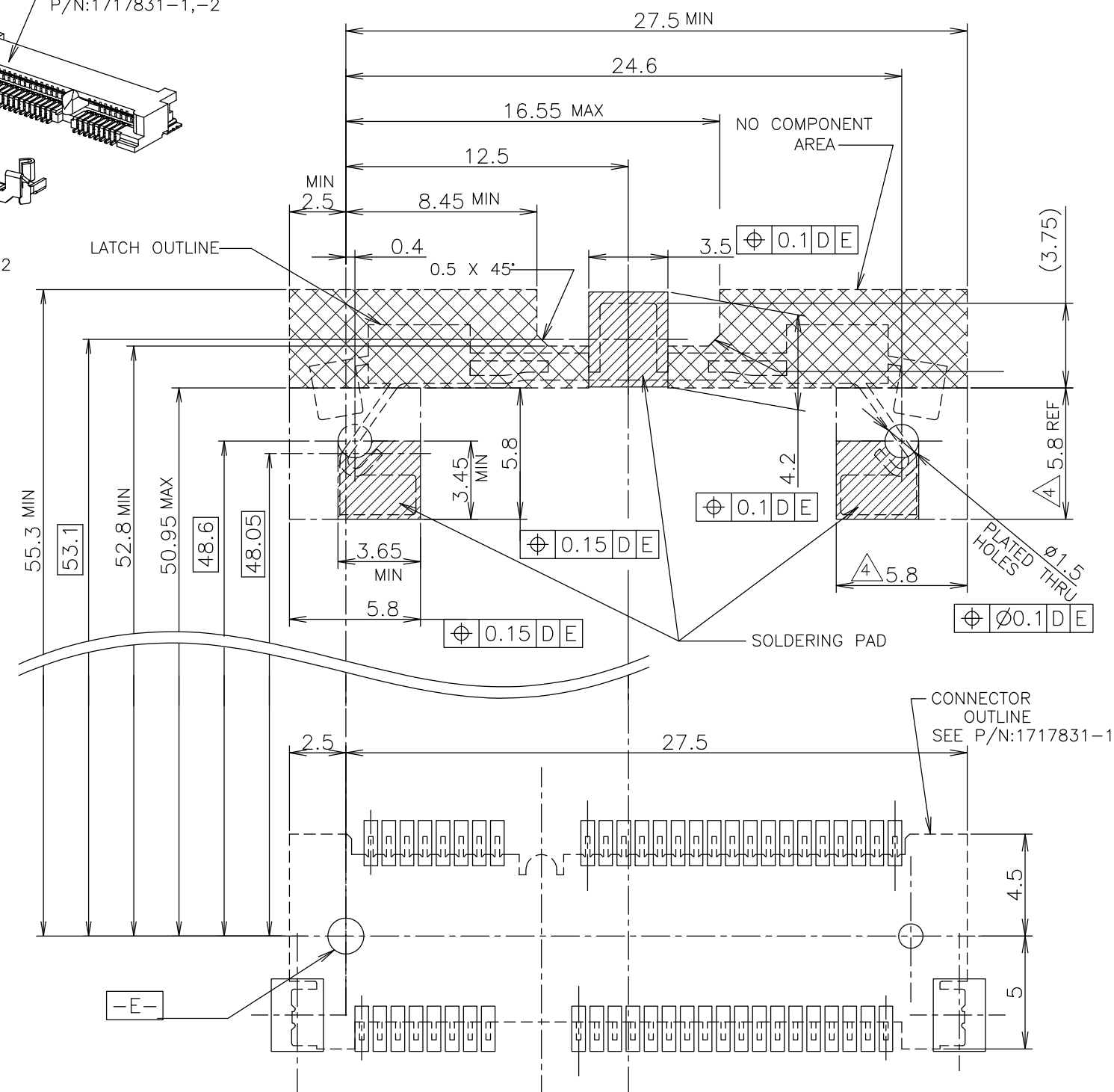
P	LTR	DESCRIPTION	DATE	DWN	APVD
E		ECR-14-001999	11FEB2014	W.W	C.W



← 1717832-2 AS SHOWN

LATCH
P/N:1717832-1,-2CONNECTOR
P/N:1717831-1,-2

LATCH OUTLINE



POLYIMIDE TAPE

← 1717832-3 AS SHOWN

NOTE

1. MATERIAL : COPPER ALLOY
2. FINISH : TIN PLATING ALL OVER NICKEL
3. \square D \square IS THE TOP SURFACE OF PCB.
4. COMPONENT KEEP OUT AREA BASED ON MINI PCI EXPRESS SPECIFICATION 1.0 CANDIDATE DRAFT (v1)

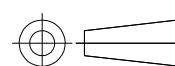
TOLERANCES UNLESS
OTHERWISE SPECIFIED

10 ≥ : ±0.2
30 ≥ > 10: ±0.25
100 ≥ > 10: ±0.3
ANGLES : ±3°

THIS DRAWING IS A CONTROLLED DOCUMENT.

DIMENSIONS:

MM



MATERIAL

SEE NOTE

TOLERANCES UNLESS
OTHERWISE SPECIFIED:

0 PLC ±
1 PLC ±
2 PLC ±
3 PLC ±
4 PLC ±
ANGLES ±
FINISH

SEE NOTE

DWN J.TANIGAWA 100CT03

CHK Y.YAMAMOTO 100CT03

APVD Y.YAMAMOTO 100CT03

PRODUCT SPEC

108-5899

APPLICATION SPEC

WEIGHT 0.6g

CUSTOMER DRAWING

NAME

SEMI HARD TRAY & EMBOSS TAPE SUPPLY
MINI PCI EXPRESS CONNECTOR LATCH

SIZE

A3 00779

CAGE CODE

DRAWING NO

C-1717832

SCALE

4:1

SHEET

1 OF 4

REV

E

RECOMMENDED P.C.BOARD PATTERN LAYOUT

STE

TE Connectivity

4

3

2

1

LOC J	DIST	REVISIONS					
		P	LTR	DESCRIPTION	DATE	DWN	APVD
			—	SEE SHEET 1	—	—	—

D

D

C

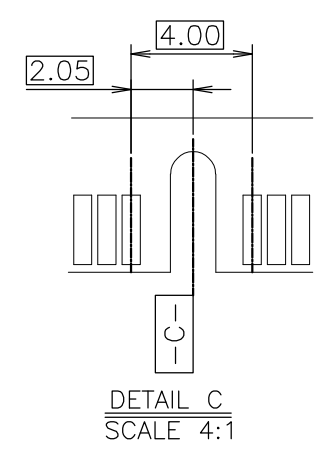
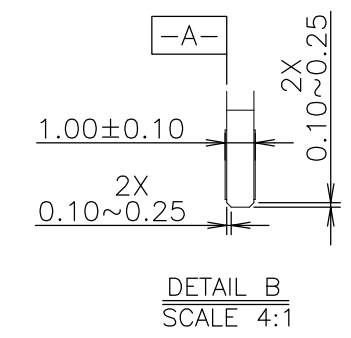
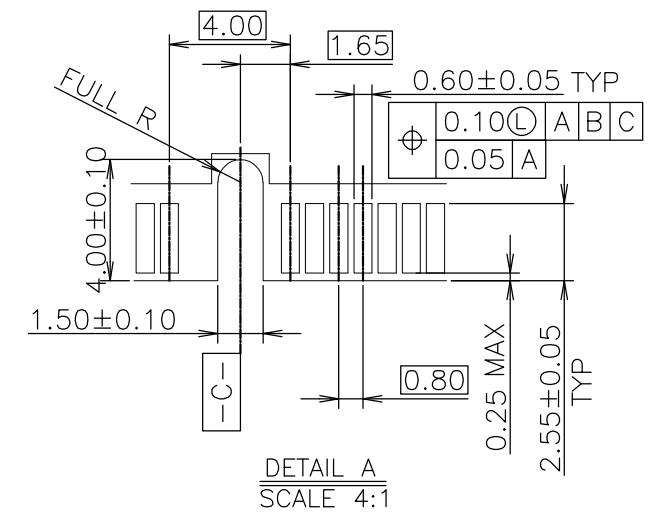
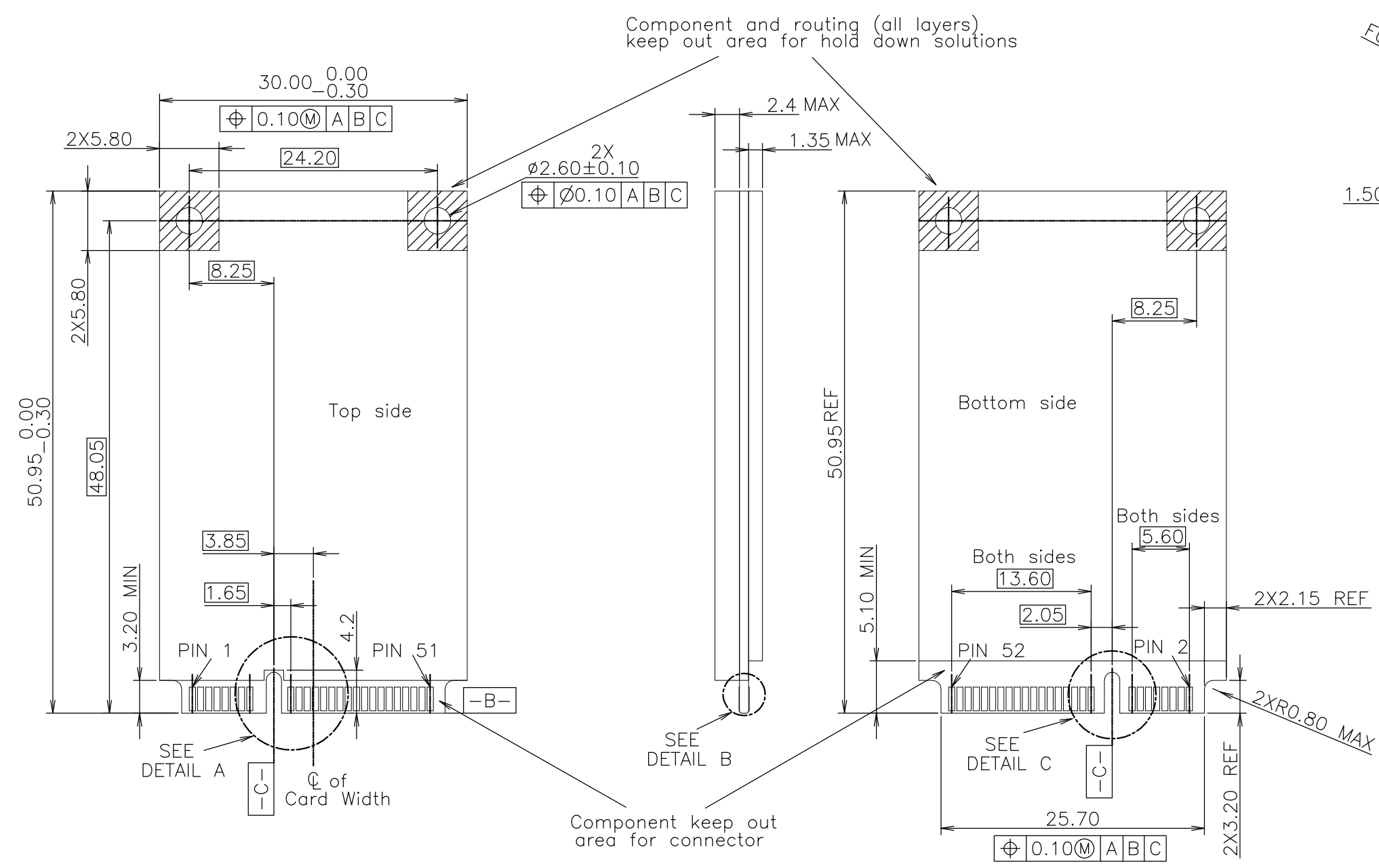
C

B


B

A

A



- NOTES
- 1. PCI EXPRESS MINI CARD, PCB THICKNESS 1.0MM.
 - 2. CARD THICKNESS APPLIES ACROSS TABS AND INCLUDES PLATING AND/OR METALIZATION.
 - 3. BEVEL MUST BE FREE OF CUTTING BURRS.

THIS DRAWING IS A CONTROLLED DOCUMENT.		DWN		 TE Connectivity	
DIMENSIONS: MM		CHK			
TOLERANCES UNLESS OTHERWISE SPECIFIED:		APVD		NAME	
0 PLC ±		PRODUCT SPEC		SEMI HARD TRAY & EMBOSS TAPE SUPPLY	
1 PLC ±		108-5899		MINI PCI EXPRESS CONNECTOR LATCH	
2 PLC ±		APPLICATION SPEC		SIZE	
3 PLC ±		WEIGHT		CAGE CODE	
4 PLC ±		CUSTOMER DRAWING		DRAWING NO	
ANGLES ±		SCALE 2:1		SHEET 2 OF 4	
FINISH		REV E		RESTRICTED TO	

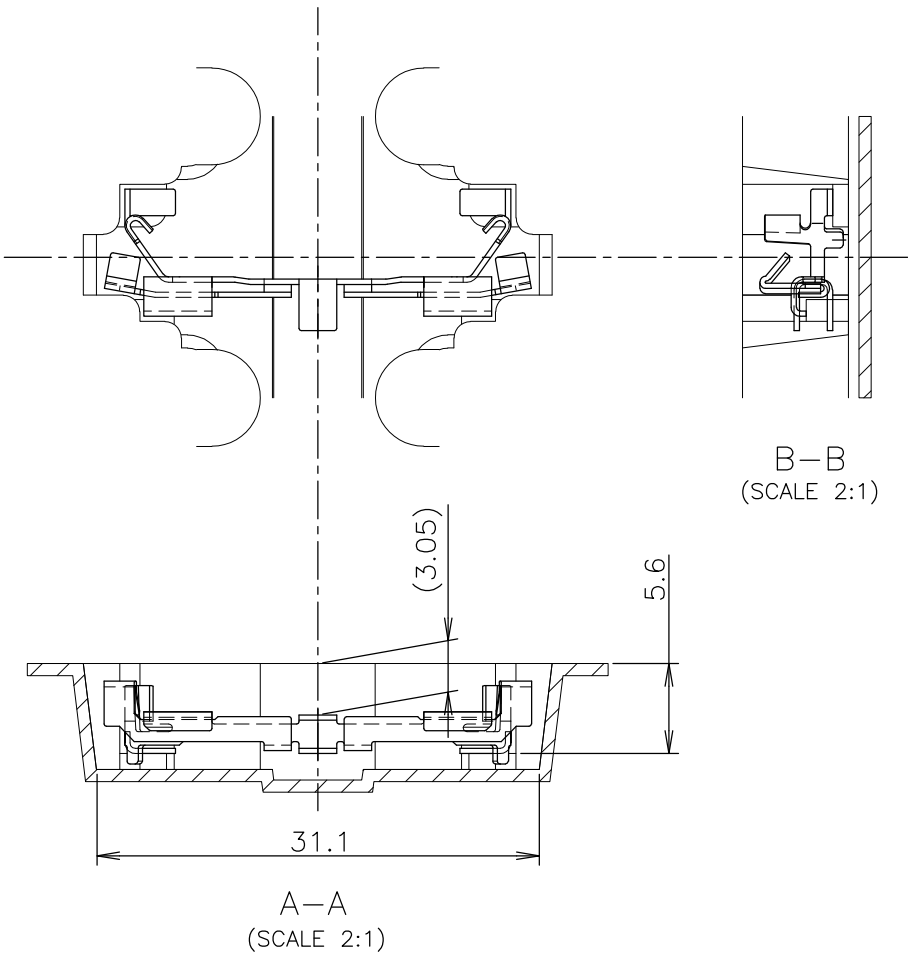
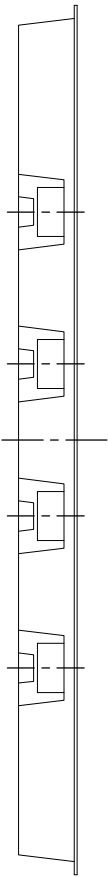
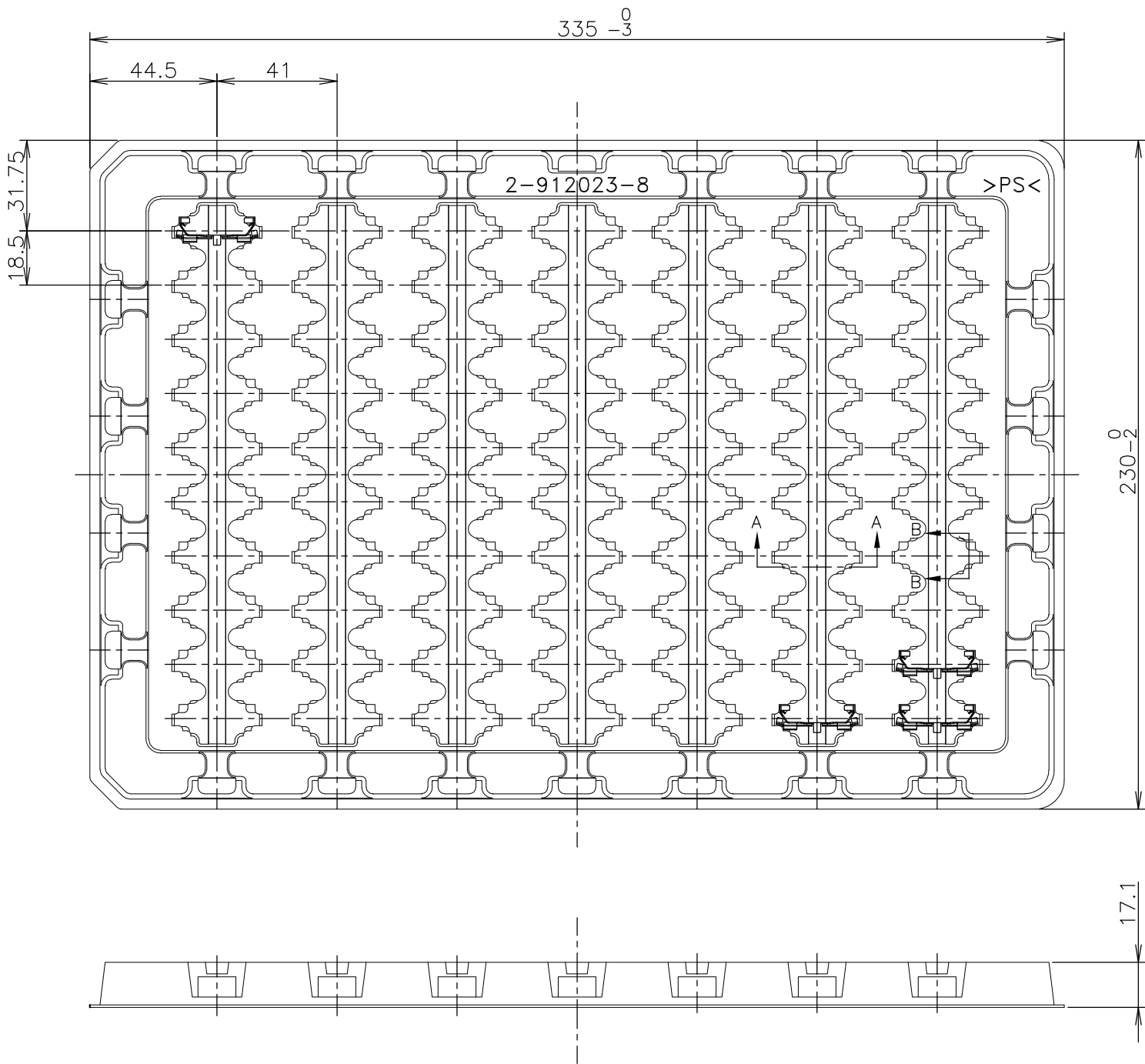
LOC		DIST		REVISIONS					
P	LTR	DESCRIPTION			DATE	DWN	APVD		
	-	SEE SHEET 1			-	-	-		

D

C


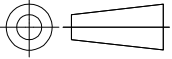
B

A



NOTE
1. THE DIRECTION OF EACH LATCH ON A TRAY IS REFERRED TO THIS DWG.

70EA/TRAY	2-912023-8	1717832-1
QTY	TRAY P/N	P/N

THIS DRAWING IS A CONTROLLED DOCUMENT.		DWN		 TE Connectivity			
DIMENSIONS: MM		CHK		NAME			
		APVD		SEMI HARD TRAY & EMBOSS TAPE SUPPLY MINI PCI EXPRESS CONNECTOR LATCH			
		PRODUCT SPEC		SIZE			
TOLERANCES UNLESS OTHERWISE SPECIFIED ±0.5		108-5899		CAGE CODE		DRAWING NO	
		APPLICATION SPEC		A300779		C-1717832	
MATERIAL		WEIGHT		RESTRICTED TO			
		CUSTOMER DRAWING		SCALE		SHEET	
				NTS		3 of 4	
						REV	
						E	

THIS DRAWING IS UNPUBLISHED.

RELEASED FOR PUBLICATION

OCT ,2003.

© COPYRIGHT 2003 By -

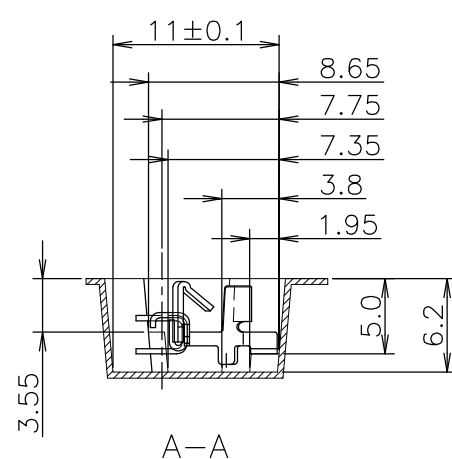
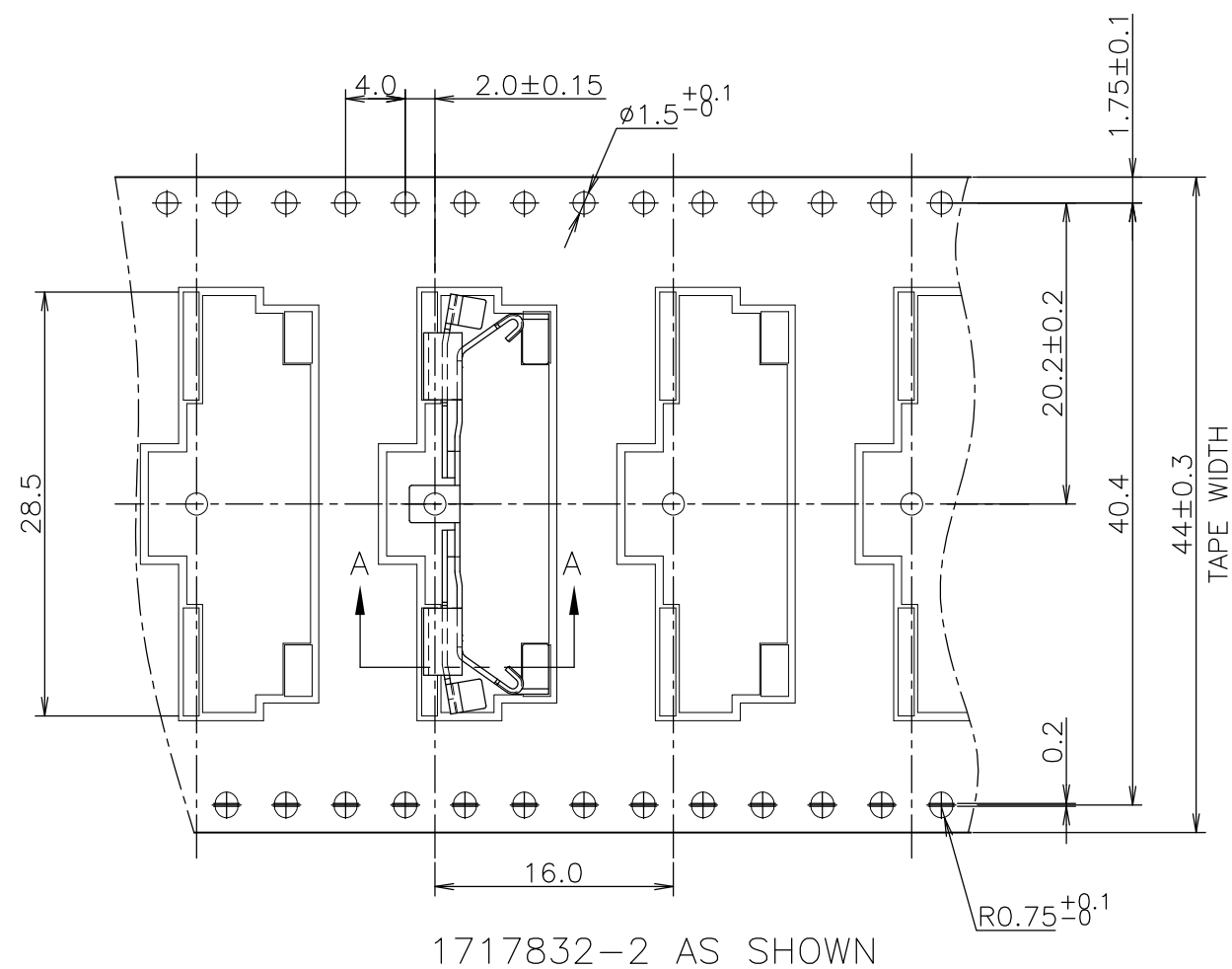
ALL RIGHTS RESERVED.

LOC
J

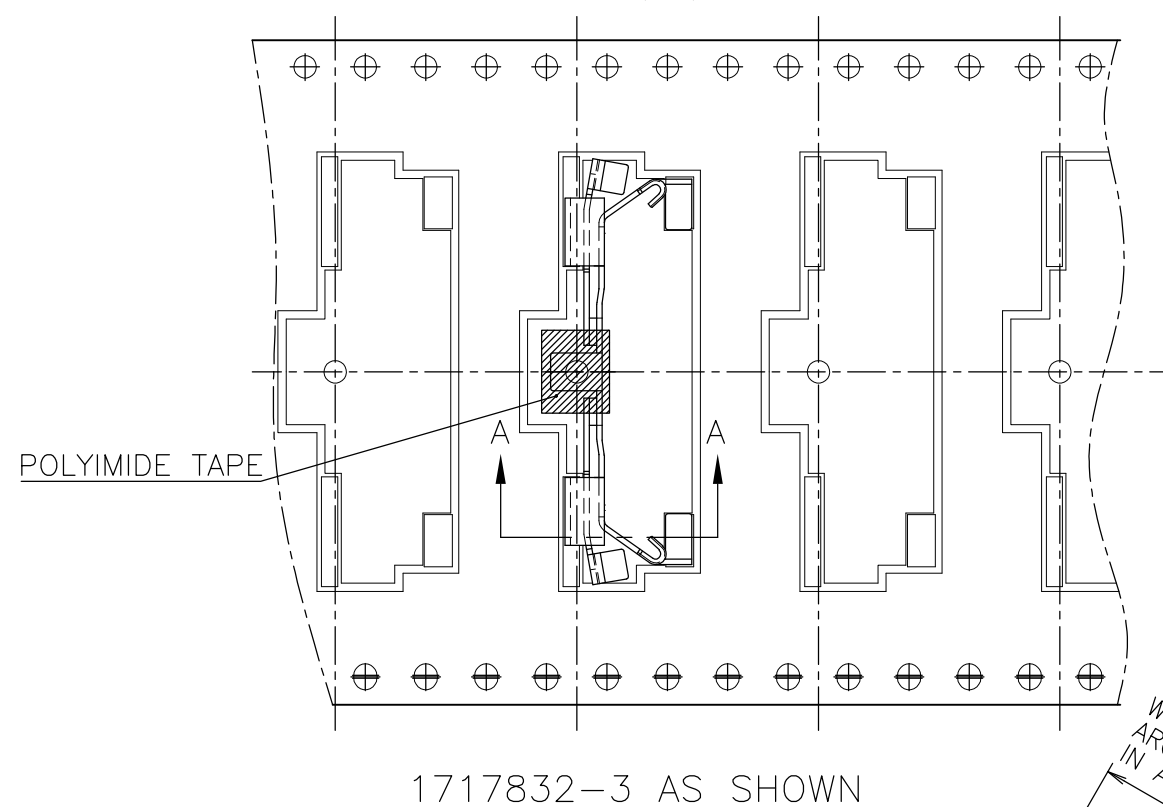
DIST

REVISIONS

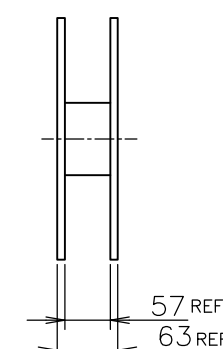
P	LTR	DESCRIPTION	DATE	DWN	APVD
-	-	SEE SHEET 1	-	-	-



1 PEELING RESISTANCE : 0.1N~1.3N
(10gf~130gf)
SPEED : 300mm/min



POLYIMIDE TAPE

FLANGE CORE DIAMETER
Ø100^{REF}REEL DIAMETER
Ø330^{REF}

REEL WIDE

57^{REF}
63^{REF}WITHOUT
CHARGE
300mm
APPROX

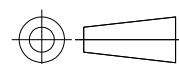
WITH PRODUCT CHARGE

12
HOLESWITHOUT CHARGE
300mm
APPROX

WEEDING THE COVER TAPE
AROUND THE OUTER PERIPHERY
IN A TURN.
165°~180°
PEELING ANGLE.

500EA	6-912103-0	1717832-3
500EA	6-912103-0	1717832-2
QTY/REEL	EMBOSS TAPE P/N	P/N

THIS DRAWING IS A CONTROLLED DOCUMENT.

DIMENSIONS:
MM

MATERIAL

TOLERANCES UNLESS
OTHERWISE SPECIFIED:

0 PLC ±
1 PLC ±
2 PLC ±
3 PLC ±
4 PLC ±
ANGLES ±
FINISH ±

DWN

CHK

APVD

PRODUCT SPEC

108-5899

APPLICATION SPEC

WEIGHT

CUSTOMER DRAWING

TE Connectivity

NAME

SEMI HARD TRAY & EMBOSS TAPE SUPPLY
MINI PCI EXPRESS CONNECTOR LATCH

SIZE

CAGE CODE

DRAWING NO

RESTRICTED TO

A3 00779

C-1717832

SCALE 2:1

SHEET 4 OF 4

REV E

Mouser Electronics

Authorized Distributor

Click to View Pricing, Inventory, Delivery & Lifecycle Information:

[TE Connectivity:](#)

[1717832-2](#)