

THIS DRAWING IS UNPUBLISHED.

RELEASED FOR PUBLICATION

OCT ,2003.

© COPYRIGHT 2003 By --

ALL RIGHTS RESERVED.

NOTE

1. MATERIAL : HOUSING : HIGH TEMPERATURE THERMO PLASTIC UL94V-0
COLOR: BLACK

CONTACT : COPPER ALLOY
SOLDER PEG : COPPER ALLOY

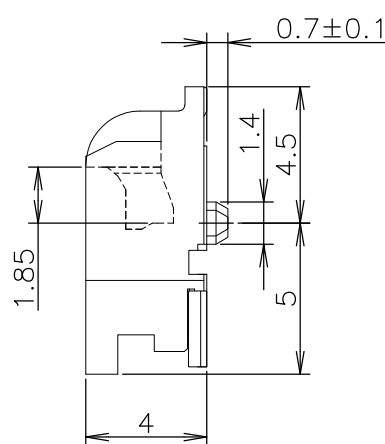
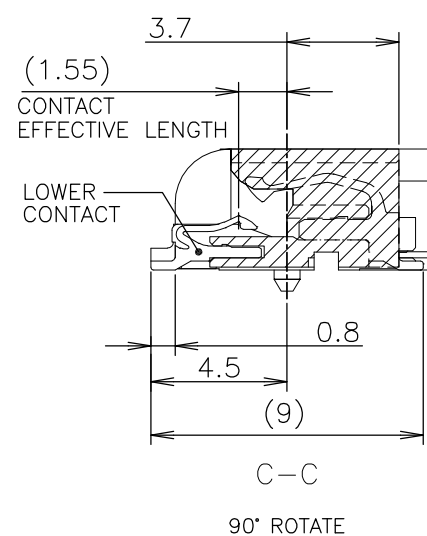
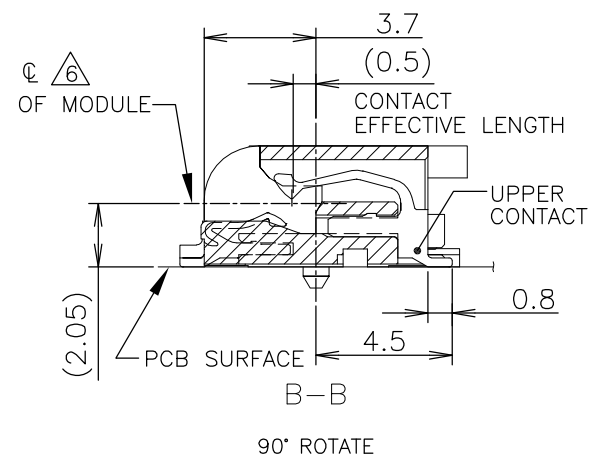
2. FINISH : CONTACT : GOLD FLASH ON CONTACT AREA, ALL OVER NICKEL.
SOLDER PEG : TIN PLATE, ALL OVER NICKEL

3. TOLERANCES NON-CUMMURATIVE

4. -D- IS THE TOP SURFACE OF PCB.

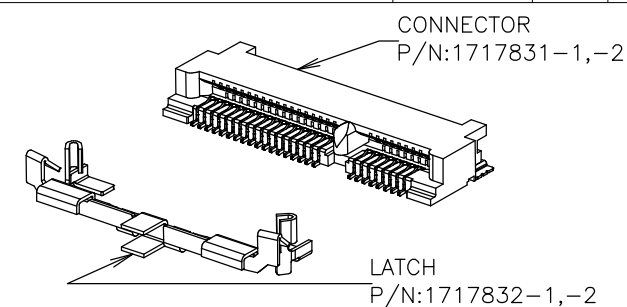
5. COMPONENT KEEP OUT AREA BASED ON MINI PCI EXPRESS SPECIFICATION
1.0 CANDIDATE DRAFT (v1)

6. THE FLOATING VALUE BY SOLDERING IS NOT INCLUDED.



BOSSLSS TYPE
1-1717831-1

| REVISIONS | | | | | |
|-----------|-----|----------------------------|-----------|-----|------|
| P | LTR | DESCRIPTION | DATE | DWN | APVD |
| | E | RELEASED PER ECR-16-010328 | 19JUL2016 | S.W | C.W |



mSATA CONNECTOR

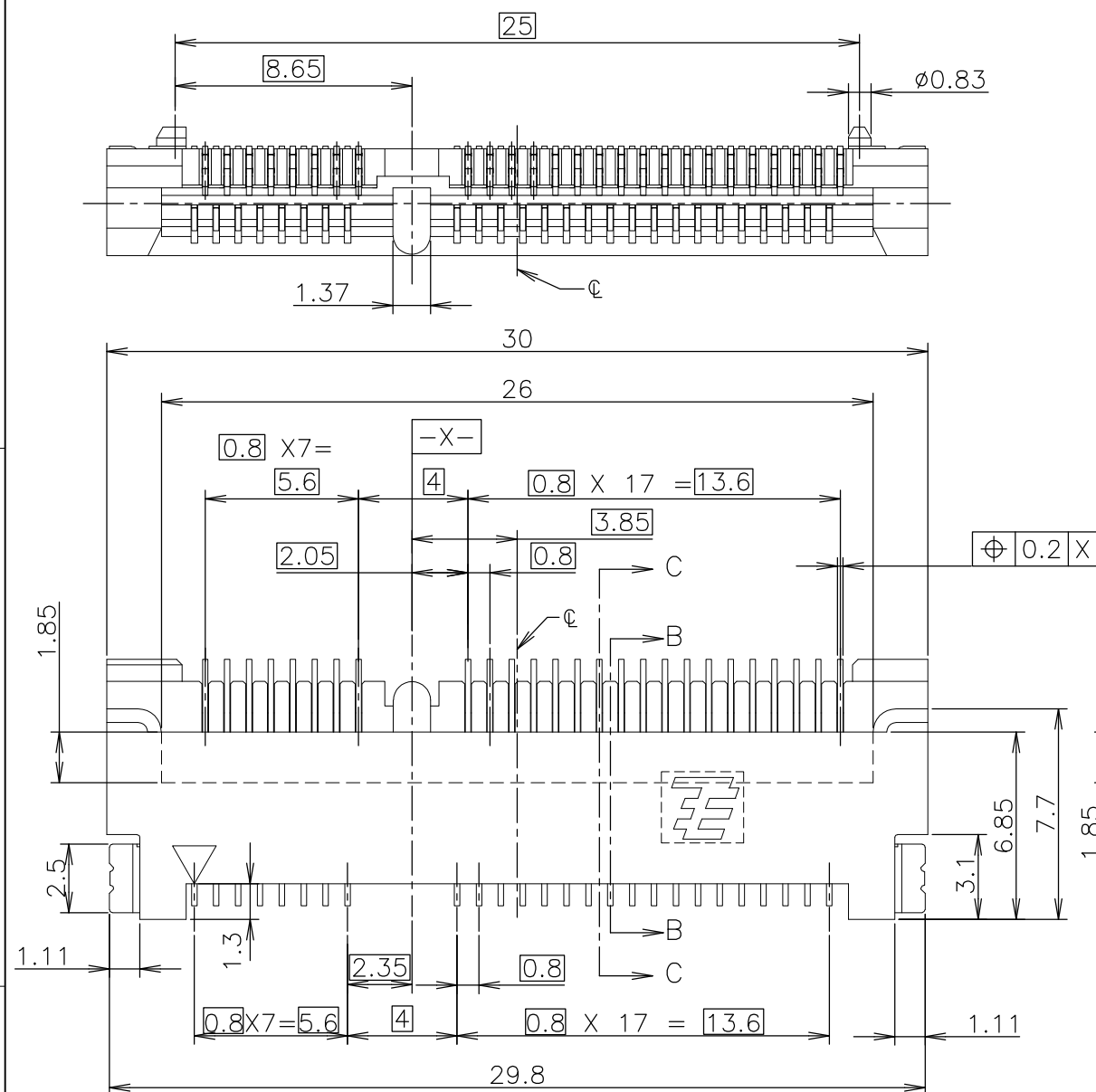
SIGNAL ASSIGNMENTS

PCI-E MINI CARD CONNECTOR
SIGNAL ASSIGNMENTS

| PIN# | NAME | PIN# | NAME |
|----------------|--------------------|------|------------|
| 51 | Reserved | 52 | +3.3Vaux |
| 49 | Reserved | 50 | GND |
| 47 | Reserved | 48 | +1.5V |
| 45 | Reserved | 46 | LED_WPAN# |
| 43 | GND | 44 | LED_WLAN# |
| 41 | +3.3Vaux | 42 | LED_WWAN# |
| 39 | +3.3Vaux | 40 | GND |
| 37 | GND | 38 | USB_D+ |
| 35 | GND | 36 | USB_D- |
| 33 | PETp0 | 34 | GND |
| 31 | PETn0 | 32 | SMB_DATA |
| 29 | GND | 30 | SMB_CLK |
| 27 | GND | 28 | +1.5V |
| 25 | PERp0 | 26 | GND |
| 23 | PERn0 | 24 | +3.3Vaux |
| 21 | GND | 22 | PERST# |
| 19 | Reserved* (UIM_C4) | 20 | W_DISABLE# |
| 17 | Reserved* (UIM_C8) | 18 | GND |
| MECHANICAL KEY | | | |
| 15 | GND | 16 | UIM_VPP |
| 13 | REFCLK+ | 14 | UIM_RESET |
| 11 | REFCLK- | 12 | UIM_CLK |
| 9 | GND | 10 | UIM_DATA |
| 7 | CLKREQ# | 8 | UIM_PWR |
| 5 | COEX2 | 6 | 1.5V |
| 3 | COEX1 | 4 | GND |
| 1 | WAKE# | 2 | 3.3Vaux |

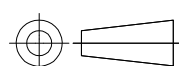
* Reserved for future UIM interface (if needed)

| PIN# | NAME | PIN# | NAME |
|----------------|--------------------|------|--------------------|
| 51 | Presence Detection | 52 | +3.3V |
| 49 | DA/DSS | 50 | GND |
| 47 | Vendor | 48 | +1.5V |
| 45 | Vendor | 46 | Reserved |
| 43 | No Connect | 44 | Reserved |
| 41 | +3.3V | 42 | Reserved |
| 39 | +3.3V | 40 | GND |
| 37 | GND | 38 | Reserved |
| 35 | GND | 36 | Reserved |
| 33 | +A | 34 | GND |
| 31 | -A | 32 | Two Wire Interface |
| 29 | GND | 30 | Two Wire Interface |
| 27 | GND | 28 | +1.5V |
| 25 | -B | 26 | GND |
| 23 | +B | 24 | +3.3V |
| 21 | GND | 22 | Reserved |
| 19 | Reserved | 20 | Reserved |
| 17 | Reserved | 18 | GND |
| MECHANICAL KEY | | | |
| 15 | GND | 16 | Reserved |
| 13 | Reserved | 14 | Reserved |
| 11 | Reserved | 12 | Reserved |
| 9 | GND | 10 | Reserved |
| 7 | Reserved | 8 | Reserved |
| 5 | Reserved | 6 | +1.5V |
| 3 | Reserved | 4 | GND |
| 1 | Reserved | 2 | +3.3V |



THIS DRAWING IS A CONTROLLED DOCUMENT.

DIMENSIONS:
MM



MATERIAL
SEE NOTE

TOLERANCES UNLESS
OTHERWISE SPECIFIED:

0 PLC ± -
1 PLC ± -
2 PLC ± -
3 PLC ± -
4 PLC ± -
ANGLES ± -
FINISH

SEE NOTE

TOLERANCES UNLESS
OTHERWISE SPECIFIED
10 ≥ : ±0.2
30 ≥ >10: ±0.25
100 ≥ >10: ±0.3
ANGLES : ±3°

| | | |
|------------------|------------|---------|
| DWN | J.TANIGAWA | 100CT03 |
| CHK | Y.YAMAMOTO | 100CT03 |
| APVD | Y.YAMAMOTO | 100CT03 |
| PRODUCT SPEC | 108-5899 | |
| APPLICATION SPEC | | |
| WEIGHT | 1.2g | |



TE Connectivity

NAME
SEMI HARD TRAY & EMBOSS TAPE SUPPLY
2 IN 1 mSATA AND MINI PCI EXPRESS MINI CARD
CONNECTOR 4mm HEIGHT

| SIZE | CAGE CODE | DRAWING NO | RESTRICTED TO |
|------|-----------|------------|---------------|
| A3 | 00779 | C-1717831 | |

CUSTOMER DRAWING

SCALE 4:1

SHEET 1 OF 7

REV E

THIS DRAWING IS UNPUBLISHED.

RELEASED FOR PUBLICATION

OCT ,2003.

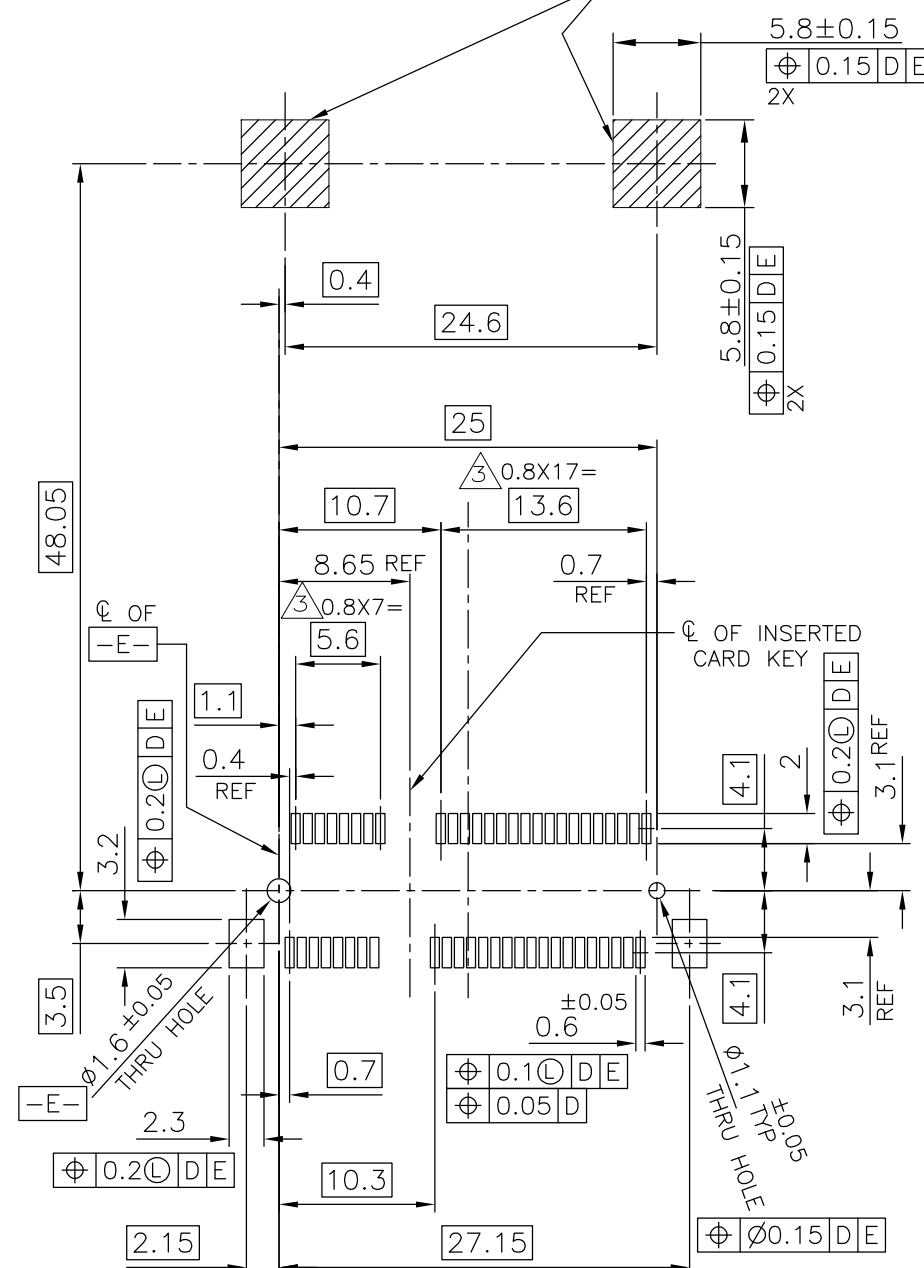
© COPYRIGHT 2003 By -

ALL RIGHTS RESERVED.

REVISIONS

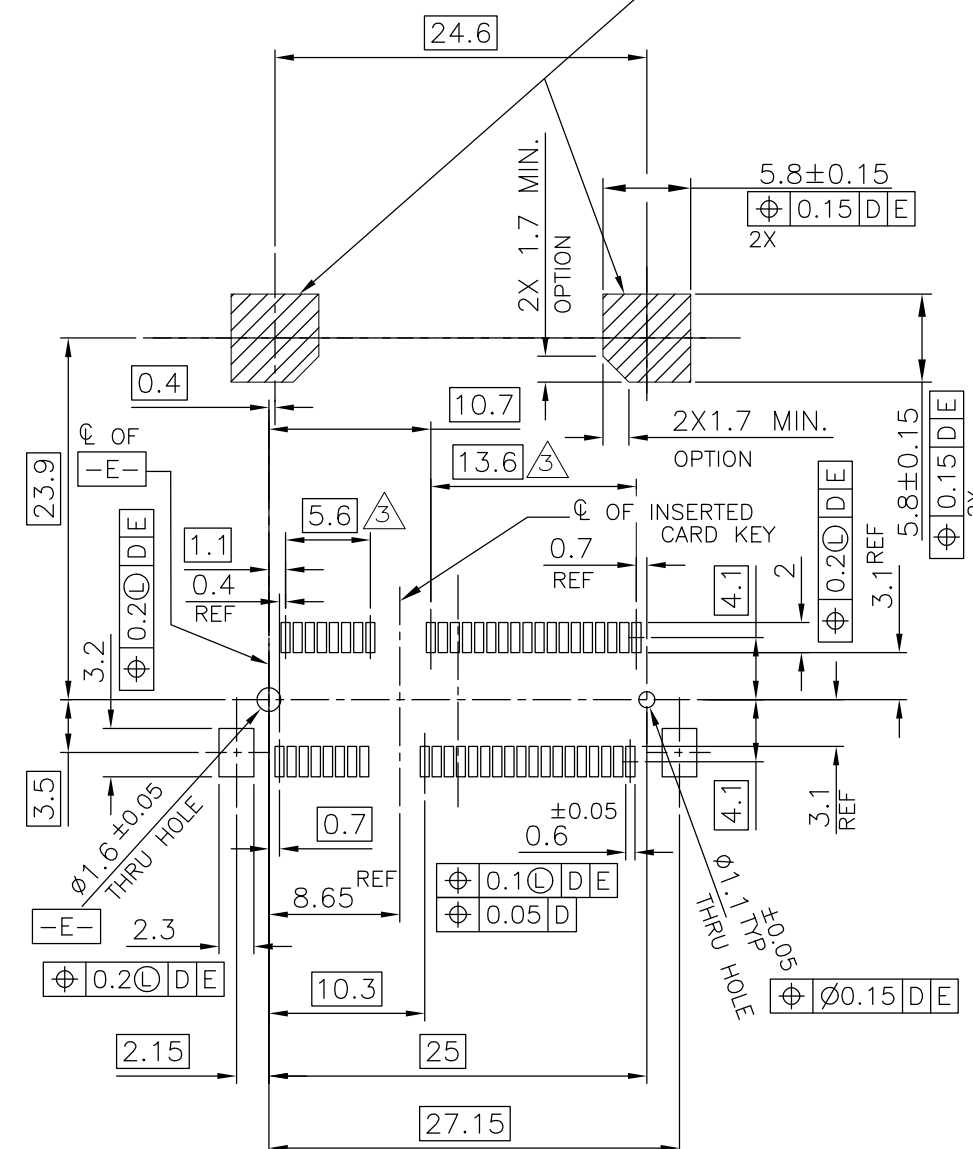
| P | LTR | DESCRIPTION | DATE | DWN | APVD |
|---|-----|-------------|------|-----|------|
| | - | SEE SHEET 1 | - | - | - |

Component and routing (all layers)
keep out area for hold down solutions



REFERENTIAL P.C.BOARD LAYOUT
FOR FULL CARD CONNECTOR

Component and routing (all layers)
keep out area for hold down solutions

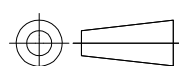


REFERENTIAL P.C.BOARD LAYOUT
FOR HALF CARD CONNECTOR

THIS DRAWING IS A CONTROLLED DOCUMENT.

DIMENSIONS:

MM



MATERIAL

TOLERANCES UNLESS
OTHERWISE SPECIFIED:

0 PLC ± -
1 PLC ± -
2 PLC ± -
3 PLC ± -
4 PLC ± -
ANGLES ± -
FINISH

DWN

CHK

APVD

PRODUCT SPEC

APPLICATION SPEC

WEIGHT

CUSTOMER DRAWING



TE Connectivity

NAME

SEMI HARD TRAY & EMBOSS TAPE SUPPLY
2 IN 1 mSATA AND MINI PCI EXPRESS MINI CARD
CONNECTOR 4mm HEIGHT

SIZE

CAGE CODE

DRAWING NO

RESTRICTED TO

A300779

C-1717831

SCALE 2:1

SHEET 2 OF 7

REV E

THIS DRAWING IS UNPUBLISHED.

RELEASED FOR PUBLICATION

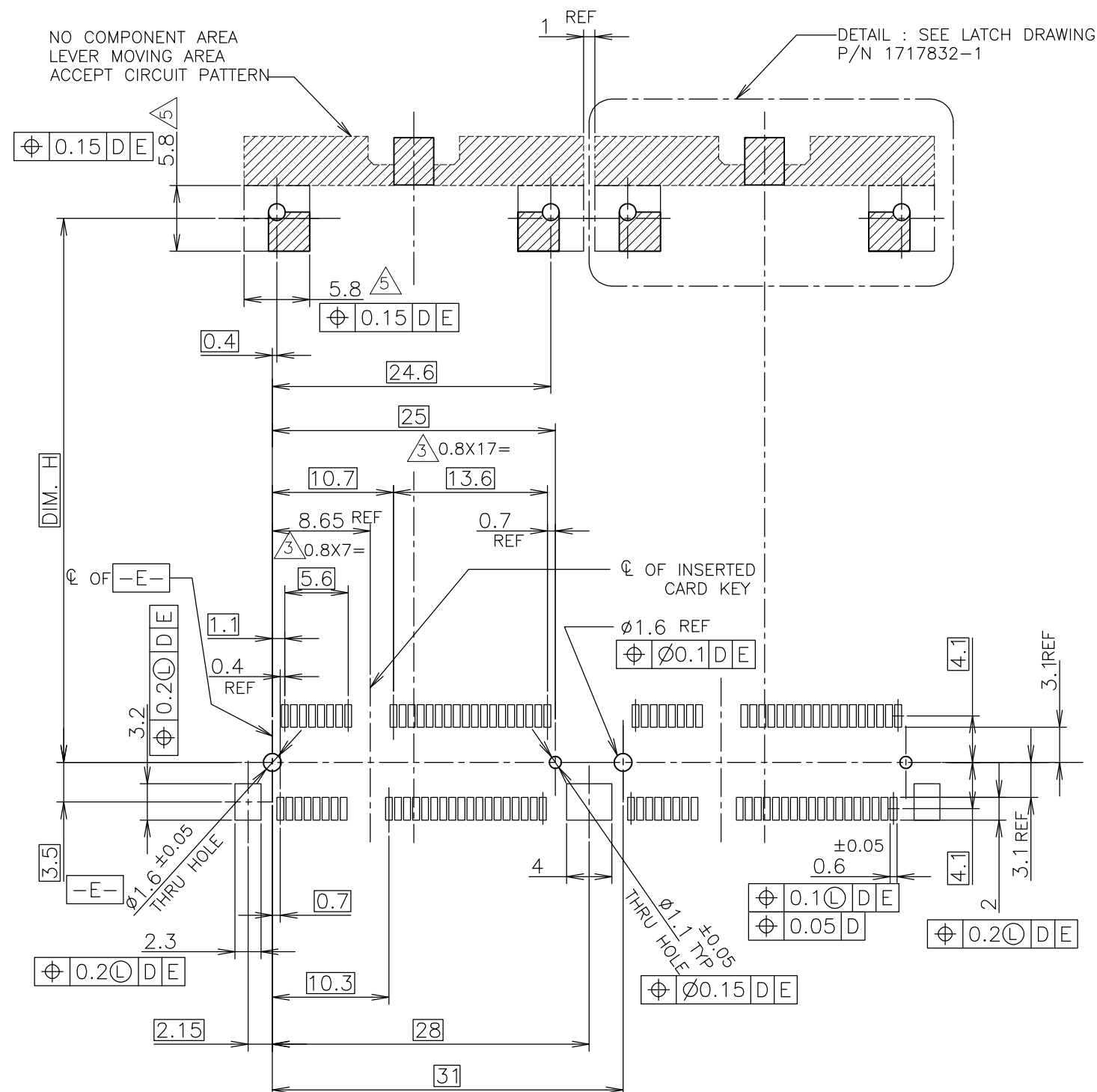
OCT , 2003.

© COPYRIGHT 2003 By -

ALL RIGHTS RESERVED.

REVISIONS

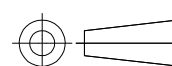
| P | LTR | DESCRIPTION | DATE | DWN | APVD |
|---|-----|-------------|------|-----|------|
| - | - | SEE SHEET 1 | - | - | - |



RECOMMENDED P.C.BOARD PATTERN LAYOUT
FOR FULL CARD & SIDE BY SIDE MOUNT

| DIM. H | |
|--------|----------------|
| 48.05 | FULL-MINI CARD |
| 23.9 | HALF-MINI CARD |

THIS DRAWING IS A CONTROLLED DOCUMENT.

DIMENSIONS:
MMTOLERANCES UNLESS
OTHERWISE SPECIFIED:

| | |
|--------|-----|
| 0 PLC | ± - |
| 1 PLC | ± - |
| 2 PLC | ± - |
| 3 PLC | ± - |
| 4 PLC | ± - |
| ANGLES | ± - |
| FINISH | |

MATERIAL

DWN

CHK

APVD

PRODUCT SPEC

APPLICATION SPEC

WEIGHT

CUSTOMER DRAWING



TE Connectivity

NAME

SEMI HARD TRAY & EMBOSS TAPE SUPPLY
2 IN 1 mSATA AND MINI PCI EXPRESS MINI CARD
CONNECTOR 4mm HEIGHT

SIZE

CAGE CODE

DRAWING NO

RESTRICTED TO

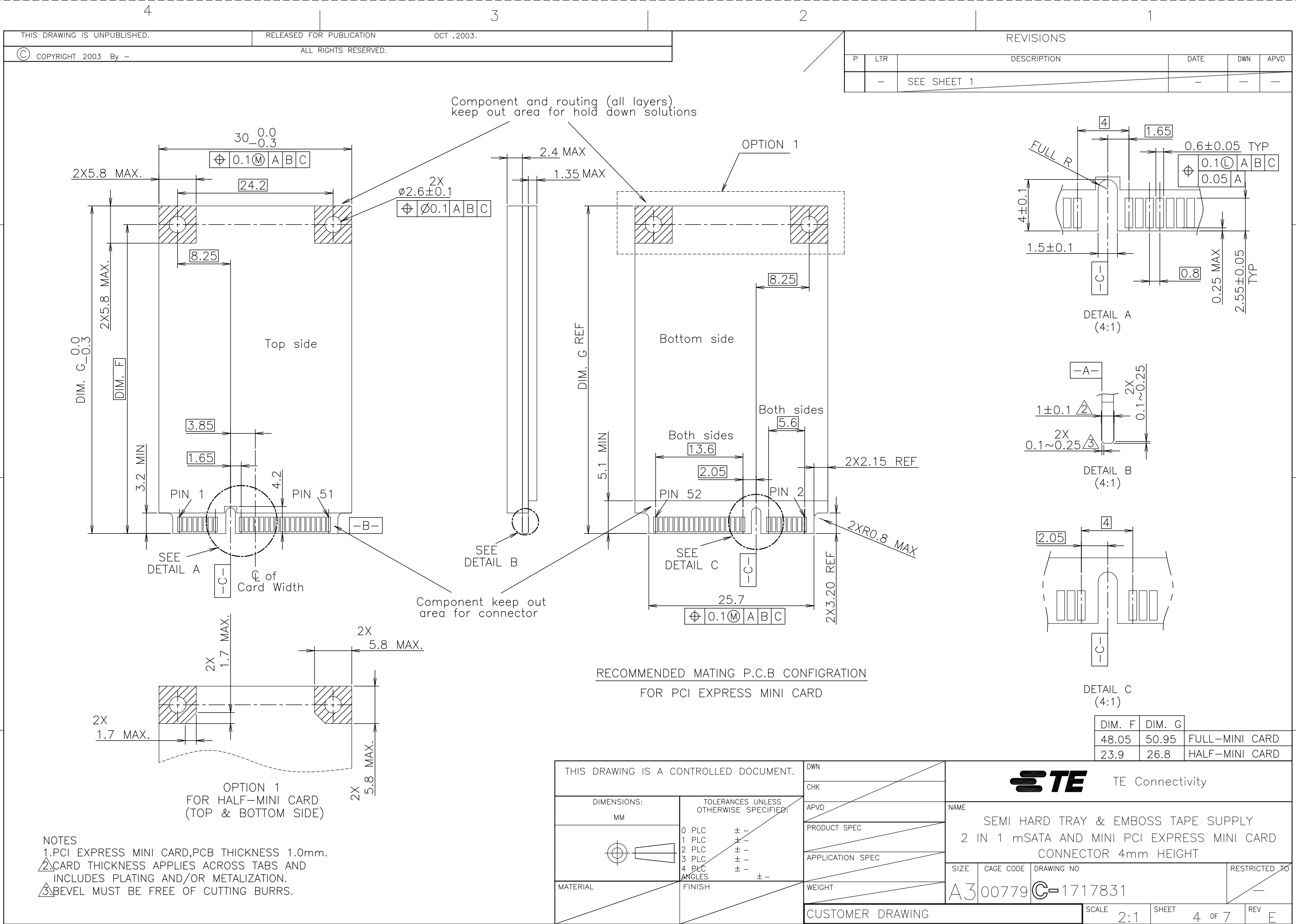
A300779

C-1717831

SCALE 2:1

SHEET 3 OF 7

REV E



4

3

2

1

THIS DRAWING IS UNPUBLISHED.

RELEASED FOR PUBLICATION

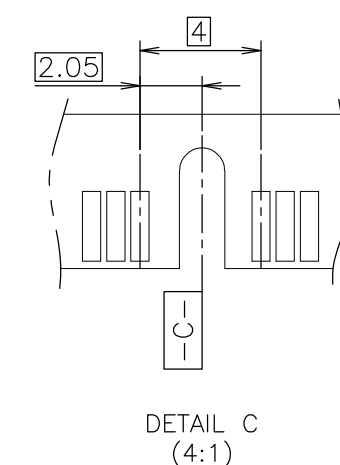
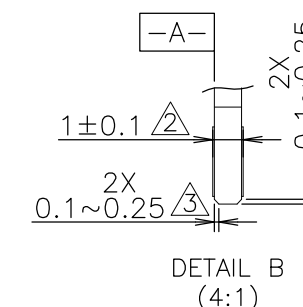
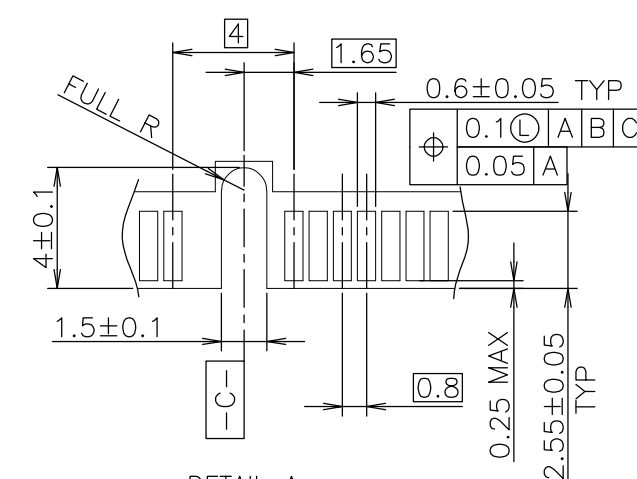
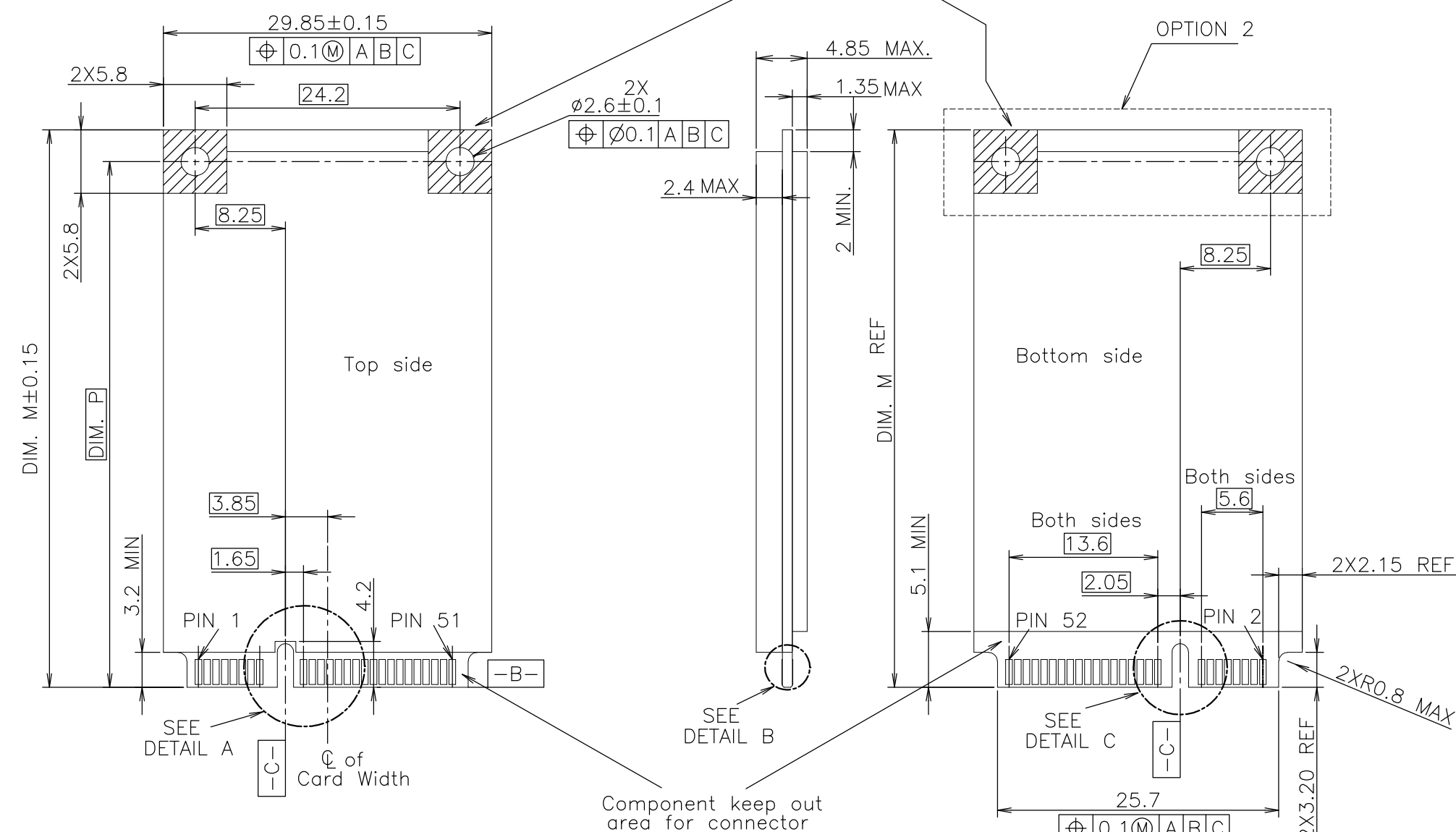
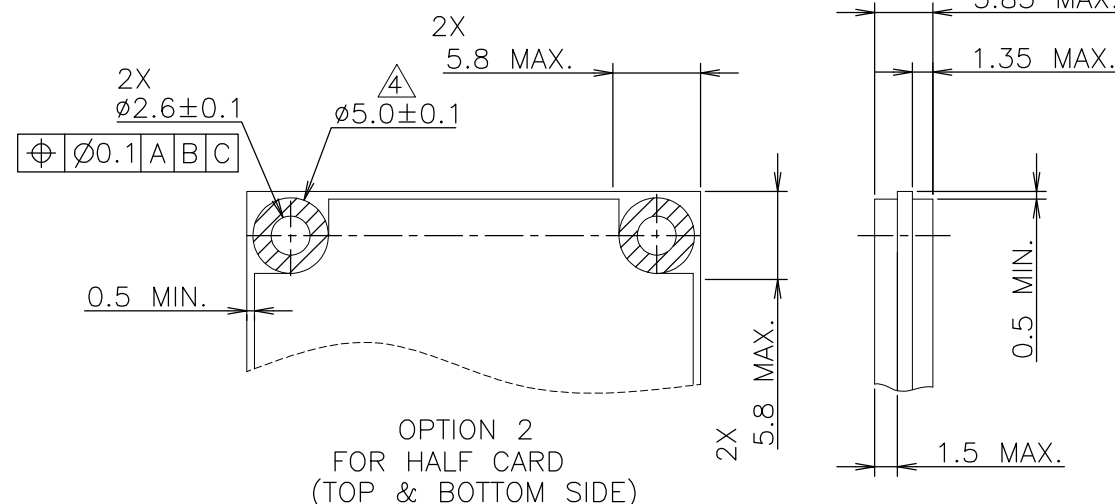
OCT , 2003.

© COPYRIGHT 2003 By -


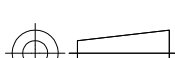
ALL RIGHTS RESERVED.

REVISIONS

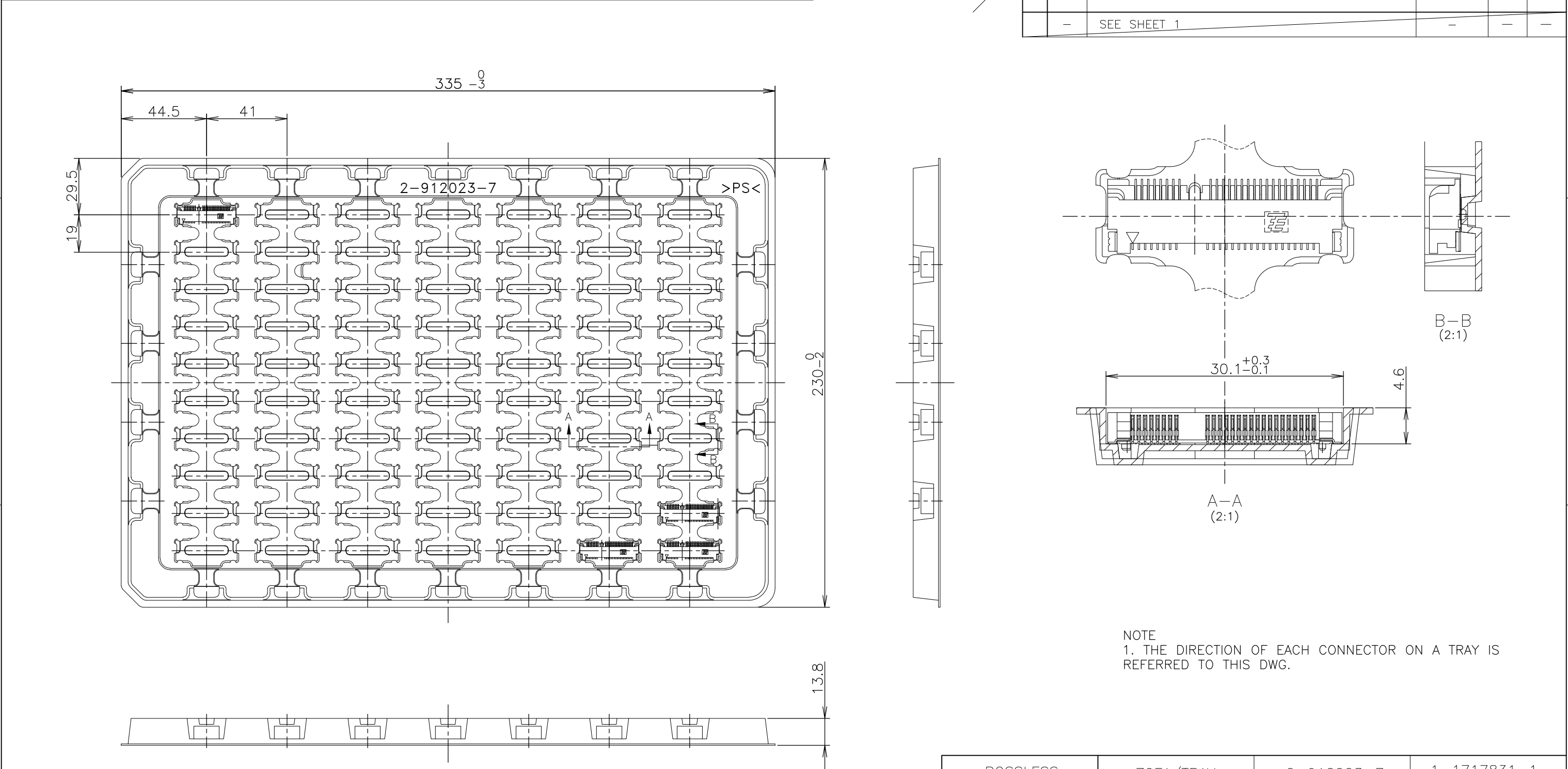
| P | LTR | DESCRIPTION | DATE | DWN | APVD |
|---|-----|-------------|------|-----|------|
| - | - | SEE SHEET 1 | - | - | - |

Component and routing (all layers)
keep out area for hold down solutionsRECOMMENDED MATING P.C.B CONFIGURATION
FOR mSATA

- NOTES
- 1.mSATA CARD,PCB THICKNESS 1.0mm.
 - 2.CARD THICKNESS APPLIES ACROSS TABS AND INCLUDES PLATING AND/OR METALIZATION.
 - 3.BEVEL MUST BE FREE OF CUTTING BURRS.
 - 4.COMPONENT AND ROUTING (TOP/BOTTOM LAYER) KEEP OUT AREA FOR HOLD DOWN SOLUTIONS.

| | | | | | | |
|---|--|--|--------------------|--|--|--|
| THIS DRAWING IS A CONTROLLED DOCUMENT. | | | DWN | |  TE Connectivity | |
| DIMENSIONS: MM | | | CHK | | | |
|  | | | APVD | | NAME SEMI HARD TRAY & EMBOSS TAPE SUPPLY 2 IN 1 mSATA AND MINI PCI EXPRESS MINI CARD CONNECTOR 4mm HEIGHT | |
| | | | PRODUCT SPEC | | | |
| | | | APPLICATION SPEC | | SIZE A3 | |
| | | | WEIGHT | | | |
| MATERIAL | | | CAGE CODE 00779 | | DRAWING NO C-1717831 | |
| | | | CUSTOMER DRAWING | | RESTRICTED — | |
| TOLERANCES UNLESS OTHERWISE SPECIFIED: | | | | | SCALE 2:1 | |
| 0 PLC ± - | | | | | SHEET 5 OF 7 | |
| 1 PLC ± - | | | | | REV F | |
| 2 PLC ± - | | | | | | |
| 3 PLC ± - | | | | | | |
| 4 PLC ± - | | | | | | |
| ANGLES ± - | | | | | | |
| FINISH | | | | | | |

| REVISIONS | | | | | |
|-----------|-----|-------------|------|-----|------|
| P | LTR | DESCRIPTION | DATE | DWN | APVD |
| | - | SEE SHEET 1 | - | - | - |



NOTE
1. THE DIRECTION OF EACH CONNECTOR ON A TRAY IS REFERRED TO THIS DWG.

| | | | |
|----------|-----------|------------|-------------|
| BOSSLESS | 70EA/TRAY | 2-912023-7 | 1-1717831-1 |
| // | 70EA/TRAY | 2-912023-7 | 1717831-1 |
| REMARK | QTY | TRAY P/N | P/N |

THIS DRAWING IS A CONTROLLED DOCUMENT.

DIMENSIONS:
MM

TOLERANCES UNLESS OTHERWISE SPECIFIED:
0 PLC ± -
1 PLC ± -
2 PLC ± -
3 PLC ± -
4 PLC ± -
ANGLES ± -
FINISH

TOLERANCES UNLESS OTHERWISE SPECIFIED
±0.5

MATERIAL

DWN
CHK
APVD
PRODUCT SPEC
108-5899
APPLICATION SPEC
WEIGHT
CUSTOMER DRAWING

TE Connectivity
NAME
SEMI HARD TRAY & EMBOSS TAPE SUPPLY
2 IN 1 mSATA AND MINI PCI EXPRESS MINI CARD CONNECTOR 4mm HEIGHT
SIZE
CAGE CODE
DRAWING NO
RESTRICTED TO

A300779

C-1717831

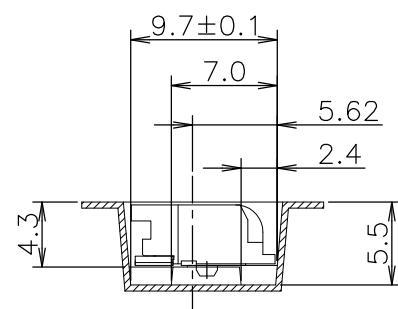
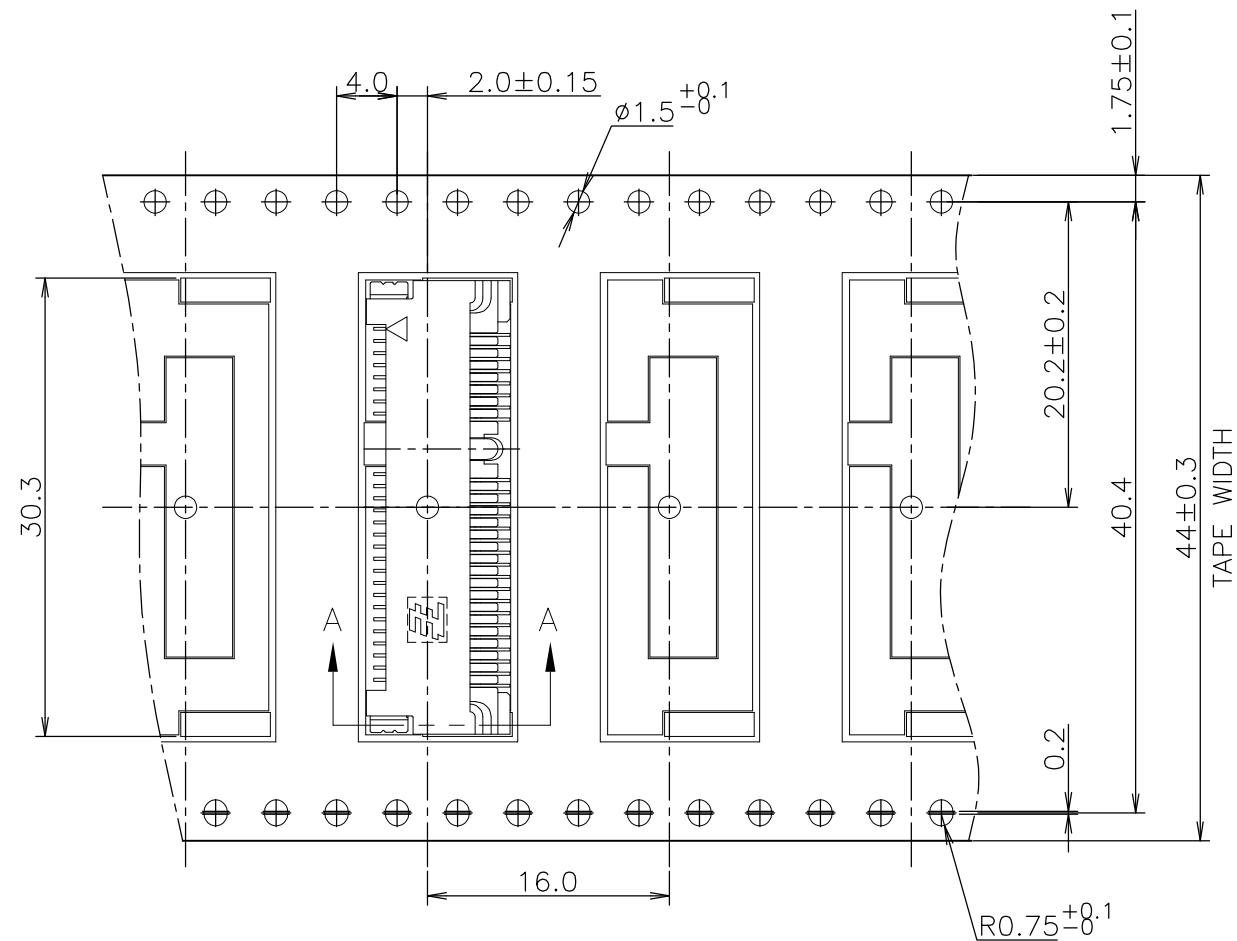
SCALE
NTS

SHEET
6 OF 7

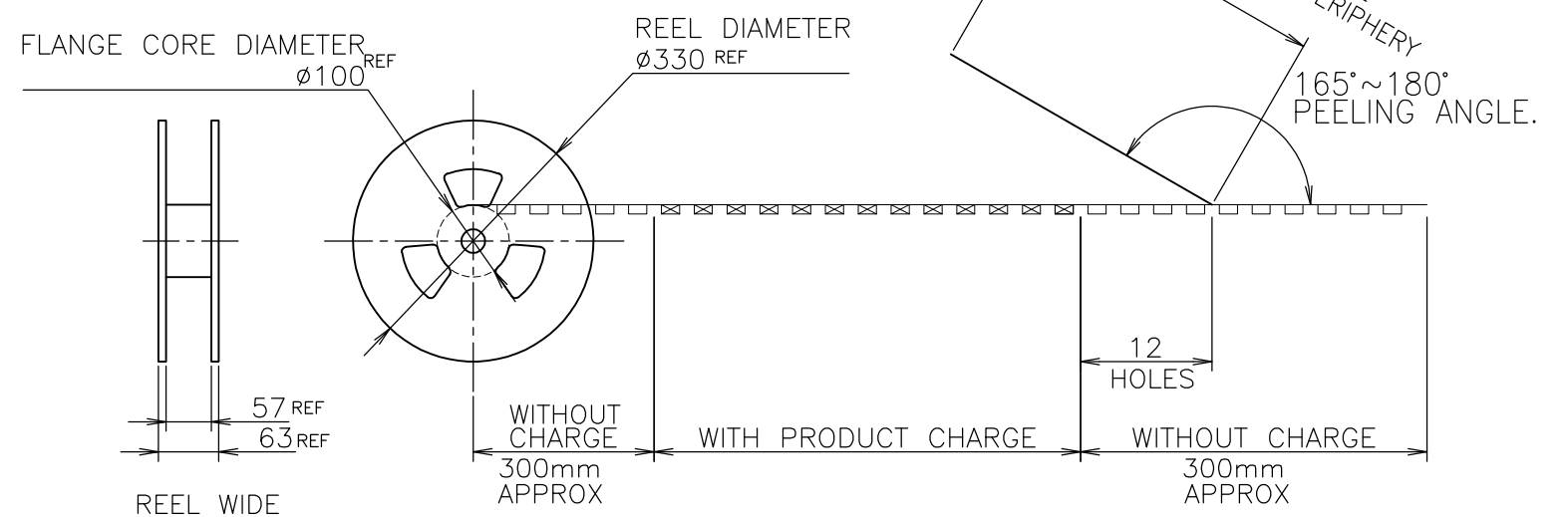
REV
E

| P | LTR | DESCRIPTION | DATE | DWN | APVD |
|---|-----|-------------|------|-----|------|
| | — | SEE SHEET 1 | — | — | — |



NOTE 1. PEELING RESISTANCE : 0.1N~1.3N
(10gf~130gf)
SPEED : 300mm/min


$$A-A$$

TOP OF REEL



| | | | |
|--------|----------|-----------------|-----------|
| ——//—— | 500EA | 5-912103-9 | 1717831-2 |
| REMARK | QTY/REEL | EMBOSS TAPE P/N | P/N |

| | | | |
|---|--|---|--|
| THIS DRAWING IS A CONTROLLED DOCUMENT. | |  TE Connectivity | |
| DIMENSIONS: MM | | NAME SEMI HARD TRAY & EMOSS TAPE SUPPLY 2 IN 1 mSATA AND MINI PCI EXPRESS MINI CARD CONNECTOR 4mm HEIGHT | |
|  | | SIZE A3 | |
| MATERIAL | | CAGE CODE 00779 | |
| TOLERANCES UNLESS OTHERWISE SPECIFIED: 0 PLC ± - 1 PLC ± - 2 PLC ± - 3 PLC ± - 4 PLC ± - ANGLES ± - | | DRAWING NO C-1717831 | |
| FINISH | | RESTRICTED TO - | |
| CUSTOMER DRAWING | | SCALE 2:1 | |
| WEIGHT | | SHEET 7 OF 7 | |
| PRODUCT SPEC 108-5899 | | REV F | |
| APPLICATION SPEC | | | |

Mouser Electronics

Authorized Distributor

Click to View Pricing, Inventory, Delivery & Lifecycle Information:

[TE Connectivity:](#)

[1717831-2](#)