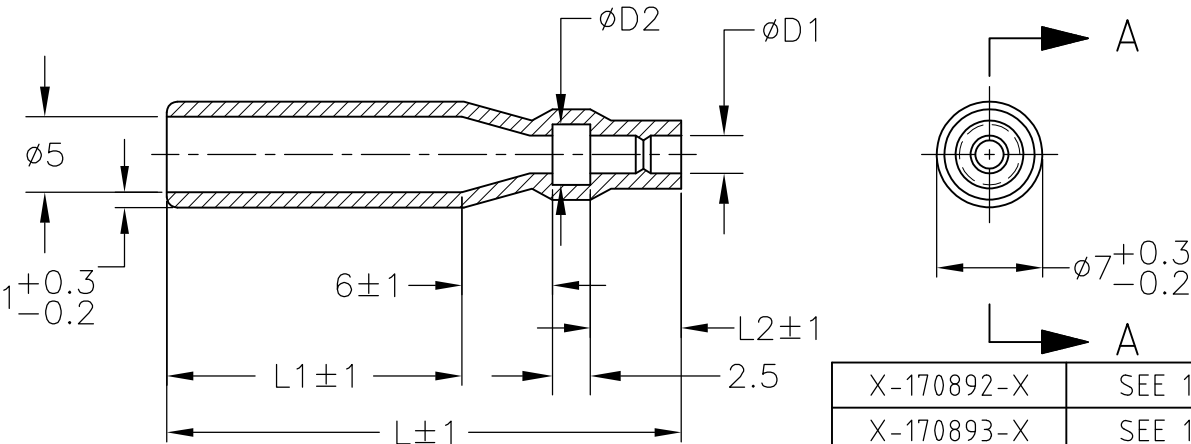


| LOC — | DIST — | REVISIONS 変更 | | | | | |
|----------|-----------|-----------------|-----|---------------------------|---------|-----|------|
| | | P | LTR | DESCRIPTION | DATE | DWN | APVD |
| | | | B2 | REVISED PER ECO-11-005140 | 07APR11 | RK | HMR |



A-A

| | |
|------------|------------|
| X-170892-X | SEE 170892 |
| X-170893-X | SEE 170893 |
| X-170887-X | SEE 170887 |
| X-170888-X | SEE 170888 |
| X-170890-X | SEE 170890 |
| X-170891-X | SEE 170891 |
| X-170823-X | SEE 170823 |
| PART NO | REMARK |

1. 材質：SS-108（一般）
2. 一般公差：±0.5
3. 適用製品規格は無し
△ 品川商工発行のカタログと本図で寸法が異なる場合は本図を優先する。

1. MATERIAL:SS-108(GENERAL)
2. GENERAL TOLERANCE: ±0.5
3. APPLICABLE PRODUCT SPEC NOT AVAILABLE
△ IN THE EVENT OF CONFLICT BETWEEN THE REQUIREMENTS OF THIS CUSTOMER DRAWING AND THE SHINAGAWA SHOKO CO LTD CATALOG THIS CUSTOMER DRAWING SHALL TAKE PRECEDENCE

| | | | | | | | |
|-------|----|----|------|------|------|----------------------|----------|
| CLEAR | 26 | 2 | 15.5 | 4 | 2 | 215020 | 170889-4 |
| | | | | | 3.5 | 215035 | 170889-3 |
| | 34 | 6 | 19.5 | 4.5 | 3.2 | 215032 | 170889-2 |
| | | | | 4 | 2.5 | 215025 | 170889-1 |
| COLOR | L | L2 | L1 | ø d2 | ø d1 | △ SHINAGAWA SHOKO PN | PART NO |

THIS DRAWING IS UNPUBLISHED.

ALL RIGHTS RESERVED.

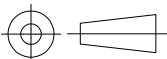
By -

©

DIMENSIONS:
単位： 耗
mm

TOLERANCES UNLESS
OTHERWISE SPECIFIED:
一般公差

| | |
|--------|-----|
| 0 PLC | ± - |
| 1 PLC | ± - |
| 2 PLC | ± - |
| 3 PLC | ± - |
| 4 PLC | ± - |
| ANGLES | ± - |



DWN 31 AUG 00
A.YAMAGUCHI

CHK 31 AUG 00
D.MATSUURA

APVD 31 AUG 00
K.BETSUI

PRODUCT SPEC
製品規格

APPLICATION SPEC
取付適用規格

WEIGHT

WIRE RANGE
抱合電線断面積

INSULATION DIA
被覆外径

MATERIAL
材料

FINISH
仕上



TE Connectivity

NAME
名称

CONNECT SLEEVE FOR
5DIA SERIES SHUR PLUG RECEPTACLE

SIZE

CAGE CODE

DRAWING NO
番号

RESTRICTED TO

A4

00779

C- 170889

CUSTOMER DRAWING

SCALE
尺度

2:1

SHEET

1

OF 1

REV

B2

Mouser Electronics

Authorized Distributor

Click to View Pricing, Inventory, Delivery & Lifecycle Information:

[TE Connectivity:](#)

[170889-1](#)