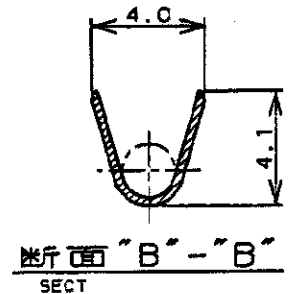
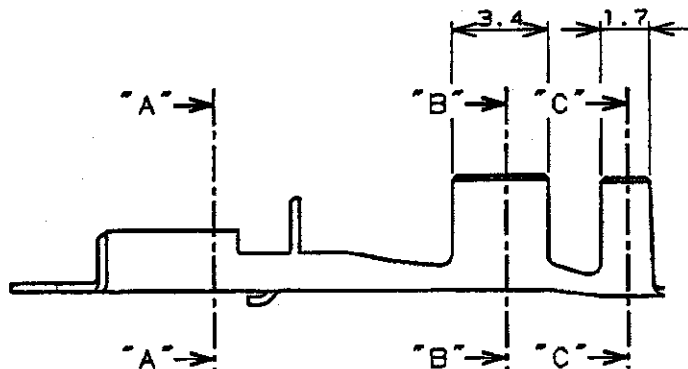
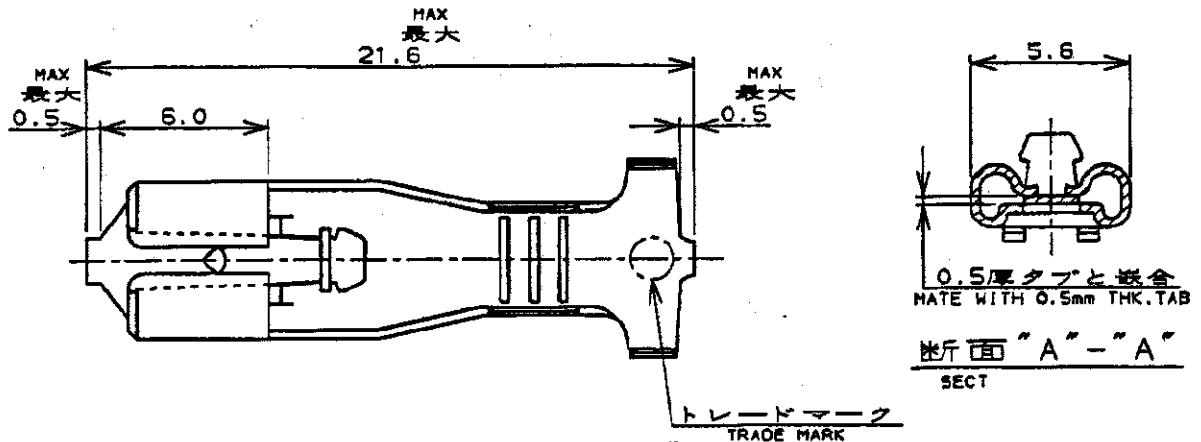


LOC	DIST	REVISIONS				DATE	OWN	APVD
J	ZDI	P	LTR	DESCRIPTION				
		E2		REVISED PER ECO-11-005030		22MAR11	RK	HMR



注記;

1. 適用ハウジング型番 : 172074, 172075
2. 適用製品規格 : 108-5126
3. 取付適用規格 : 114-5041
4. 被覆外径;
1本圧着 : 2.1-3.6φ
2本圧着 : 合計外径5.5mm以下 (1本の外径は1.6-3.1φ)

NOTES;

1. APPLICABLE HOUSING P/N : 172074, 172075
2. APPLICABLE PRODUCT SPEC : 108-5126
3. APPLICABLE APPLICATION SPEC : 114-5041
4. INSULATION DIA;
ONE WIRE : 2.1-3.6φ
TWO WIRE : OUTSIDE DIAMETER
5.5mm MAX
(SINGLE WIRE 1.6-3.1φ)



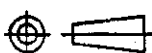
OBSOLETE PARTS: OBSOLETE
CIS STREAMLINING PER
D.RENAUD/D.SINISI

170326-6	錫めっき高耐熱銅合金 0.3t PRE-TIN HIGH HEAT RESISTANCE COPPER ALLOY 0.3t	170326-6
170326-5	錫めっき清リン青銅 0.3t PRE-TIN PHOS BR0 0.3t	170326-5
170326-1	錫めっき付黄銅 0.3t PRE-TIN BRASS 0.3t	170326-1
ばら状端子型番 LOOSE PIECE P/N	材料 MATERIAL	型番 P/N
WIRE RANGE 被覆電線断面積 0.7-2.08mm ² (AWG#18-#14)	INSULATION DIA 被覆外径	注4参照 SEE NOTES 4

DIMENSIONS,
単位 mm

TOLERANCES UNLESS
OTHERWISE SPECIFIED.

一般公差
10% : ±0.2
30% : ±0.25
100% : ±0.3
ANGLE : ±0.3
±0.4



OWN
CHK
APVD

11/8/95
8.10.01.95
8.10.01.95

PRODUCT SPEC
製品規格
注2参照
SEE NOTES 2

APPLICATION SPEC
取付適用規格
注3参照
SEE NOTES 3

WEIGHT

MATERIAL
材料
表参照
SEE TABLE

FINISH
仕上

TE

TE Connectivity

NAME
名称
"187"シリーズポジティブロック (マークII) リセプタクル
"187" SERIES POSITIVE LOCK (MARK-II) REC.

SIZE
A4
CAGE CODE
00779
DRAWING NO
C-170326

CUSTOMER DRAWING

SCALE
尺 4:1
SHEET
1 OF 1
REV
E2

Mouser Electronics

Authorized Distributor

Click to View Pricing, Inventory, Delivery & Lifecycle Information:

[TE Connectivity:](#)

[170326-5](#)