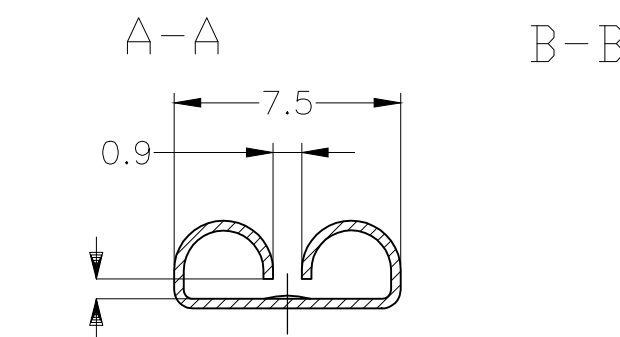
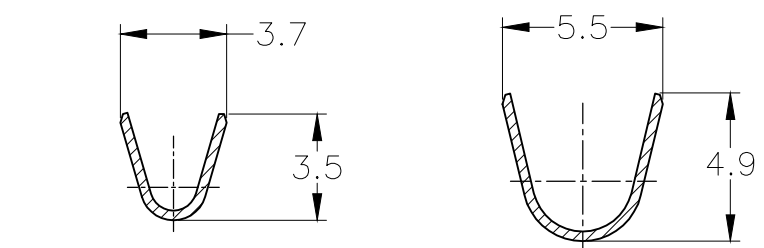
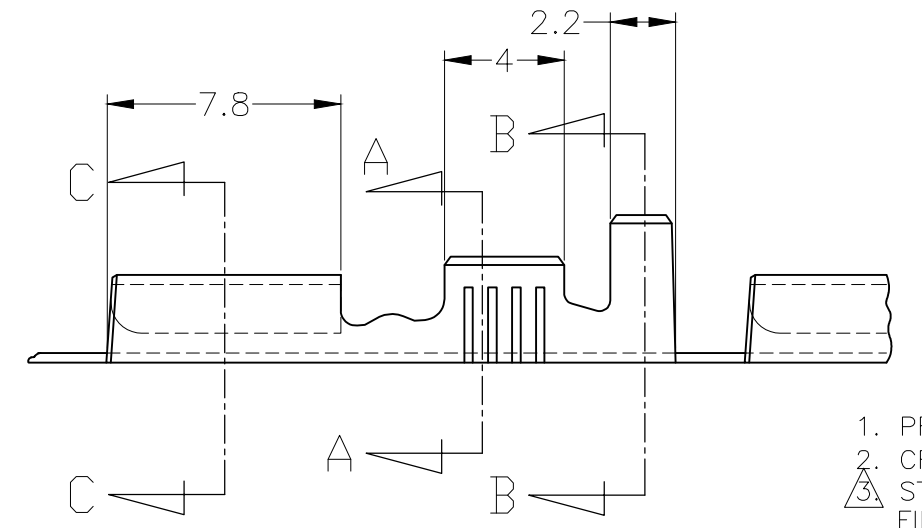
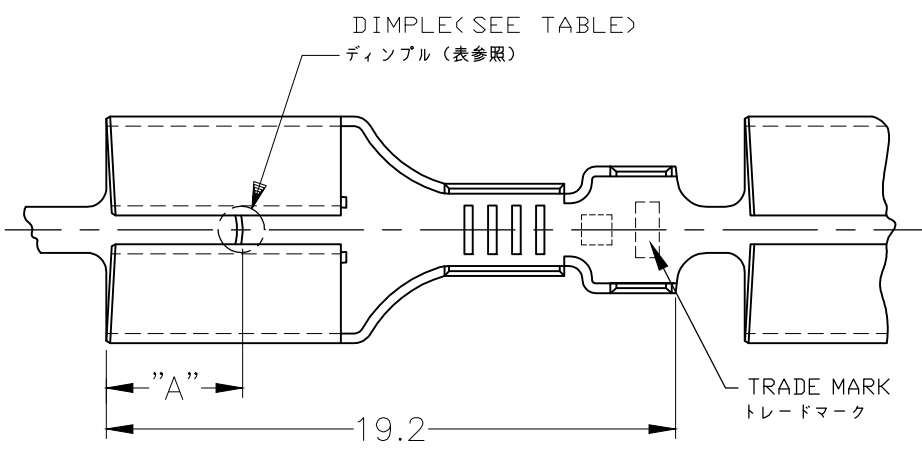


LOC	DIST	REVISIONS			
		P	LTR	DESCRIPTION	DATE
J	—			変更	
				DESCRIPTION	DATE
				U3	REVISED PER ECR-16-015552
				U4	REVISED PER ECR-20-009164
					3NOV2016
					11AUG2020
					D.L
					T.D
					MK
					E.W

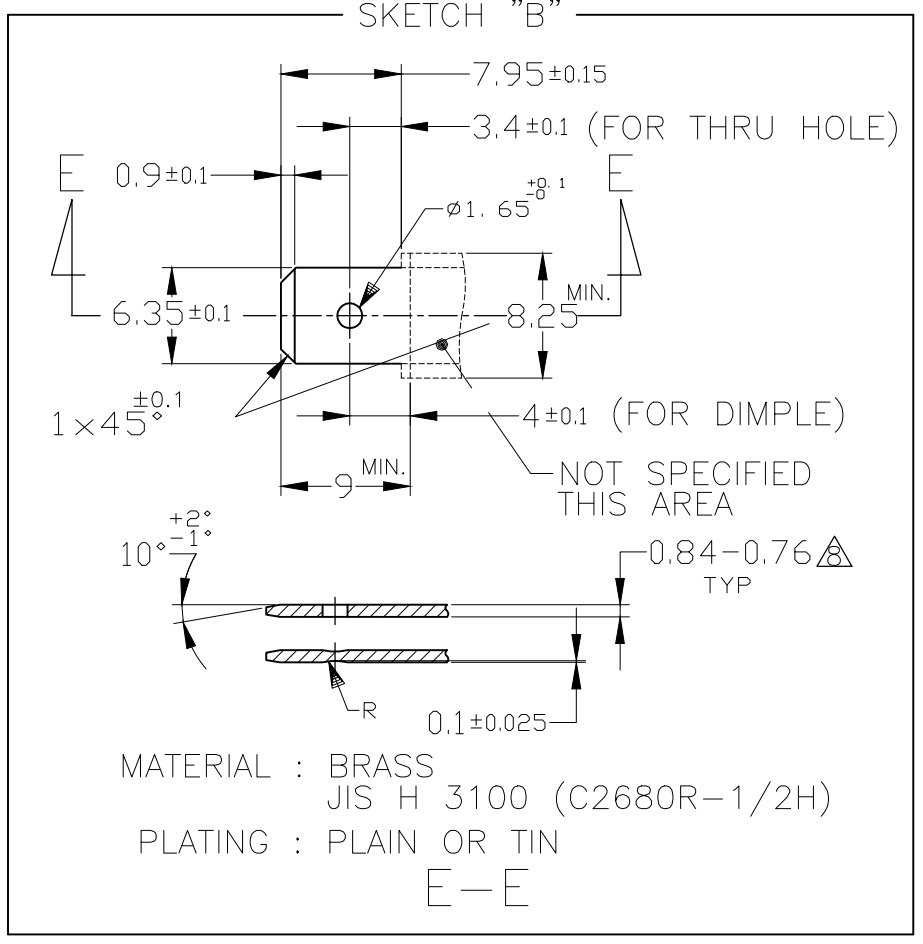
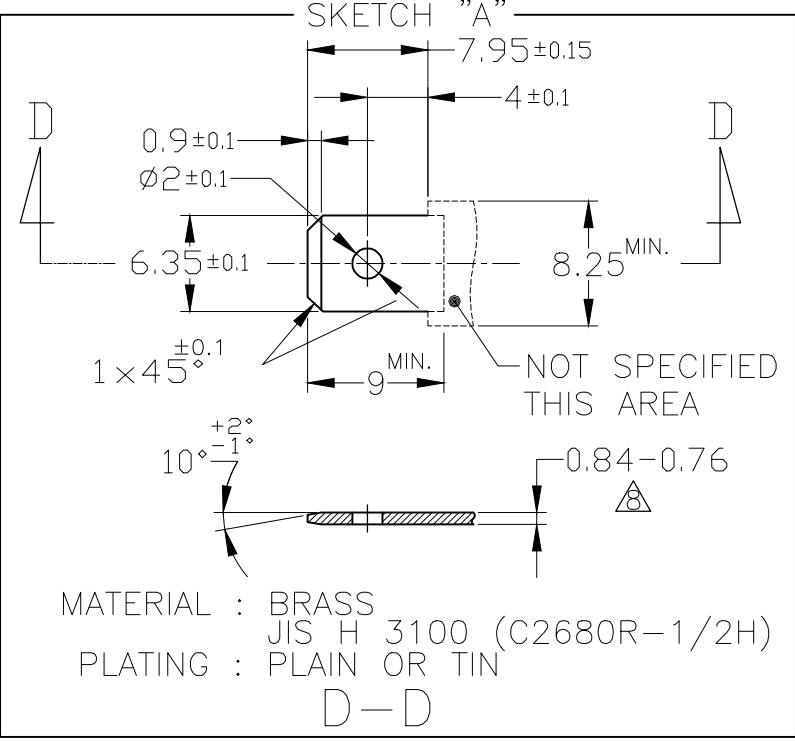
推奨タブ図

RECOMMENDED TAB DIMENSIONS



この寸法は嵌合力によって管理する。  
THIS DIMENSION IS CONTROLLED WITH MATING FORCE AND 0.71 MAX

C-C



1. PRODUCT SPEC : 108-5153, 108-5169
2. CRIMP SPEC : 114-5052
3. STRESS RELIEVING FINISH IS SUBJECT TO CHANGE BY THE TYPE OF STRESS RELIVING PROCESS  
INERT GAS FURNACE- - - -MATTE  
ATOMOSPHERIC FURNACE FOLLOWD BY ACID PICKLE- - - -BRIGHT
4. ELIMINATION STRESS RELIVING PROCESS
5. PRODUCT SPECIFICATION: 108-5147
6. QUALIFICATION TEST REPORT: 501-5050

- △ SEPARATE PAPER TYPE
- △ MATING TAB THICKNESS IS 0.84-0.76

1. 製品規格 : 108-5153, 108-5169
2. 取付適用規格 : 114-5052
3. ストレス除去処理  
処理方法により外観が変わります。  
不活性ガス加熱方式 - - - 無光沢  
大気加熱方式 - - - 光沢
4. ストレス除去処理をしない。
5. 製品規格 : 108-5147
6. 認定試験報告書 : 501-5050

OBSOLETE AMP AUSTRALIAN PRODUCT  
アンプ オーストラリア製

OBSOLETE

170030-1 OR EQUIVALENT TO 170030	W/O DIMPLE	—//—	BRASS	—#	—//—	8-170032-7
170256-3 OR EQUIVALENT TO 170256	W/O DIMPLE	TIN PLATING	BRASS	—#	179461-5	6-170032-5
170030-1 OR EQUIVALENT TO 170030	W/O DIMPLE	△	BRASS	#	//	6-170032-2
170030-3 OR EQUIVALENT TO 170030	W/O DIMPLE	TIN PLATING 錫メッキ	ZKLF-5 #4	—#	—//—	170032-6
170256-3 OR EQUIVALENT TO 170256	W/O DIMPLE	TIN PLATING 錫メッキ	BRASS	—#	179461-5	170032-5
SKETCH, "A"	WITH DIMPLE	TIN PLATING 錫メッキ	BRASS	4.5	—//—	170032-4
SKETCH "A"OR"B"	WITH DIMPLE	//	BRASS	3.8	//	170032-3
170030-1 OR EQUIVALENT TO 170030	W/O DIMPLE	—//—	BRASS	—#	—//—	170032-2
SKETCH, "A"	WITH DIMPLE	—//—	BRASS	4.5	—//—	170032-1
MATING TAB	DIMPLE	FINISH	MATERIAL	"A"	LOOSE PIECE NUMBER	PART NUMBER

THIS DRAWING IS A CONTROLLED DOCUMENT.

DIMENSIONS:  
単位: 耗  
mm

TOLERANCES UNLESS  
OTHERWISE SPECIFIED:  
一般公差 ±0.4

0-PLC ±

1-PLC ±

2-PLC ±

3-PLC ±

4-PLC ±

ANGLES ±3°

FINISH  
仕上

MATERIAL  
材料

0.32 THK

SEE TABLE

DWN  
A.YAMAGUCHI  
23JUN04

CHK  
K.BETSUI  
19SEP2015

APVD  
K.BETSUI  
23JUN04

PRODUCT SPEC  
製品規格  
SEE NOTE

APPLICATION SPEC  
取付適用規格  
—

WEIGHT

**STE** TE Connectivity

250 SERIES RECEPTACLE  
WITHOUT LATCH

SIZE  
A3

CAGE CODE  
00779

DRAWING NO  
番号  
C-170032

RESTRICTED TO  
—

CUSTOMER DRAWING

SCALE  
尺度 4:1

SHEET  
1 OF 1

REV  
U4

1470-19 (3/11)

# Mouser Electronics

Authorized Distributor

Click to View Pricing, Inventory, Delivery & Lifecycle Information:

[TE Connectivity:](#)

[170032-2](#)