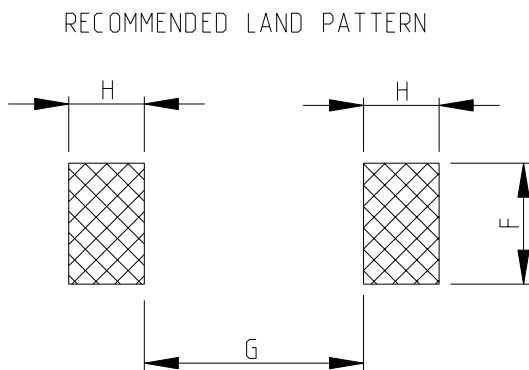
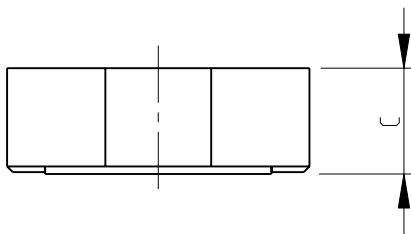
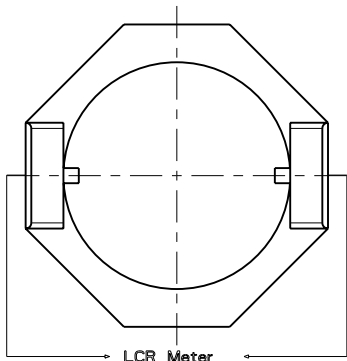
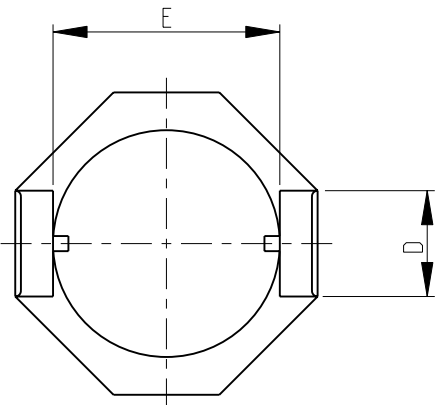
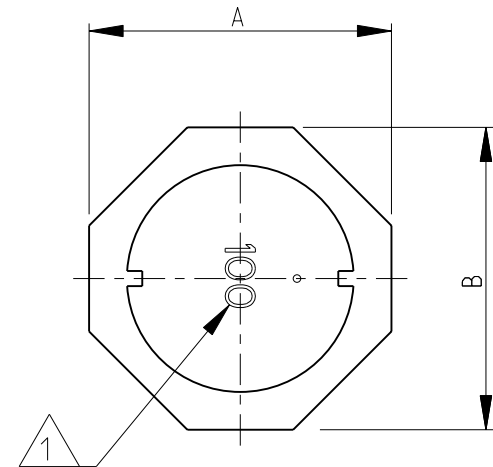
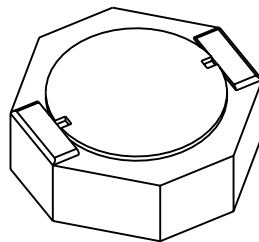


LOC	DIST	REVISIONS					
		P	LTR	DESCRIPTION		DATE	APVD
E	B		B	NEW RELEASE		14-NOV-08	SM



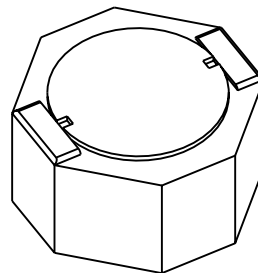
- 1 INDUCTANCE CODE
- 2 AVAILABLE IN 5 DIFFERENT SERIES
- 3 FOR FURTHER INFORMATION SEE DATA SHEET FOR 3639 SERIES-SHIELDED SMD POWER INDUCTORS

3639A SERIES



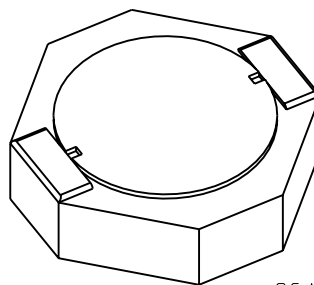
SCALE 4:1

3639B SERIES



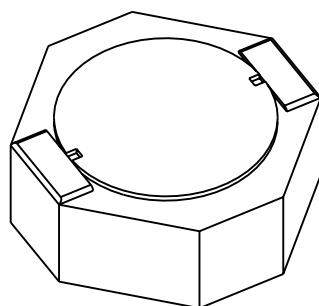
SCALE 4:1

3639C SERIES



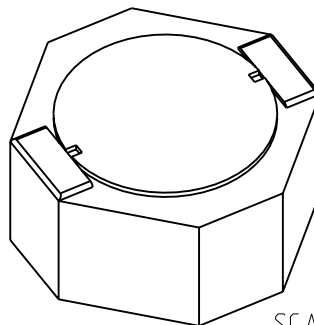
SCALE 4:1

3639D SERIES



SCALE 4:1


3639E SERIES



SCALE 4:1

3639E	10.0	10.0	4.8	3.2	7.4	3.6	7.2	1.8
3639D	10.0	10.0	3.8	3.2	7.4	3.6	7.2	1.8
3639C	10.0	10.0	2.8	3.2	7.4	3.6	7.2	1.8
3639B	8.0	8.0	4.3	2.8	6.0	3.2	5.8	2.0
3639A	8.0	8.0	2.8	2.8	6.0	3.2	5.8	2.0
SERIES	A±0.3	B±0.3	C±0.3	D (TYP)	E (TYP)	F (REF)	G (REF)	H (REF)

RoHS Compliant

THIS DRAWING IS A CONTROLLED DOCUMENT FOR TYCO ELECTRONICS CORPORATION IT IS SUBJECT TO CHANGE AND THE CONTROLLING ENGINEERING ORGANIZATION SHOULD BE CONTACTED FOR THE LATEST REVISION.		DWN SUBHASH.M 14-NOV-08		<div> Tyco Electronics</div> <div>Tyco Electronics Corporation Dorcan, Swindon, SN3 5HH</div>			
		CHK PRAKASH.S 14-NOV-08					
APVD STEPHEN.P 14-NOV-08		NAME		SHIELDED SMD POWER INDUCTORS SERIES 3639			
PRODUCT SPEC							
-		APPLICATION SPEC		SIZE A 3			
-		WEIGHT -					
CUSTOMER DRAWING				DRAWING NO C=1676953			
				SCALE 5:1			
				REV B			

# Mouser Electronics

Authorized Distributor

Click to View Pricing, Inventory, Delivery & Lifecycle Information:

[TE Connectivity:](#)

[5-1676953-2](#)