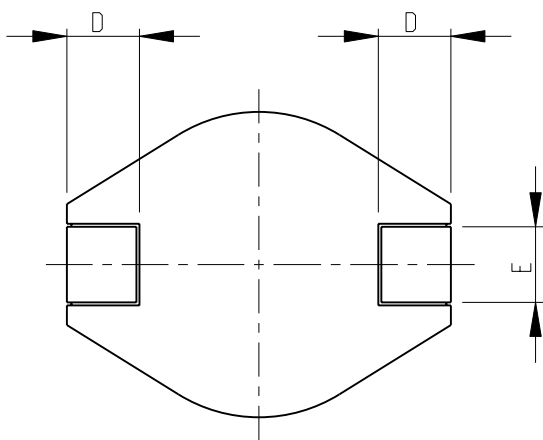
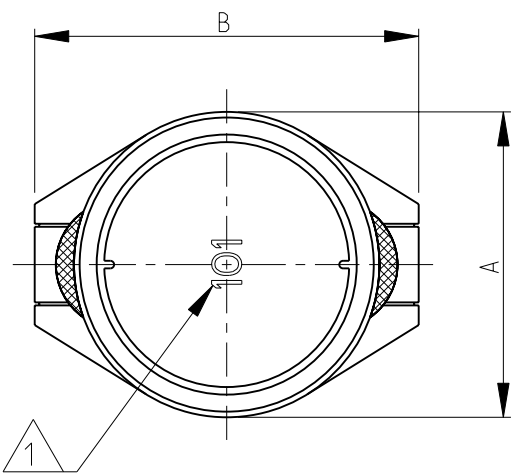
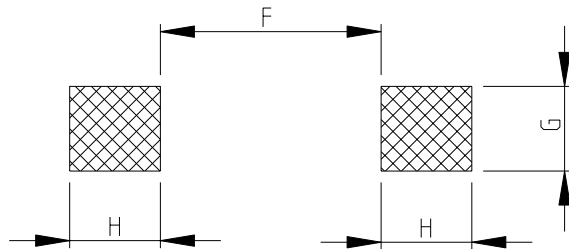
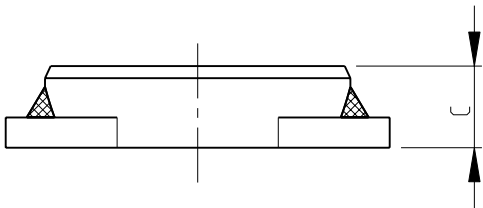


2		1						
LOC	DIST	REVISIONS						
E	B	P	LTR	DESCRIPTION		DATE	DWN	APVD
			BA	NEW RELEASE		14-NOV-08	SM	St.P

SERIES 3630D & 3630F AS SHOWN



RECOMMENDED LAND PATTERN
FOR 3630D & 3630F



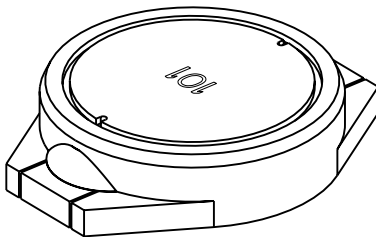
1 INDUCTANCE CODE

2 FOR FURTHER INFORMATION SEE DATA SHEET FOR
3621 SERIES-POWER INDUCTORS

RoHS Compliant

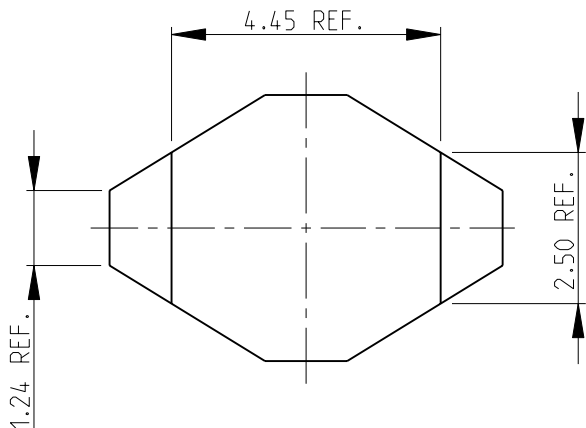
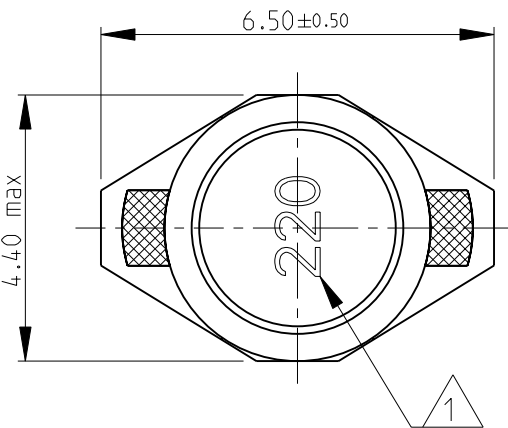
3630F	14.0±0.5	18.3±0.5	6.8±0.3	2.5±0.2	2.6±0.2	12.7	2.9	3.2
3630D	10.1±0.2	12.7±0.2	2.7±0.3	2.4±0.2	2.5±0.2	7.3	2.8	3.0
SERIES	A	B	C	D	E	F (REF)	G (REF)	H (REF)

SERIES 3630D AS SHOWN

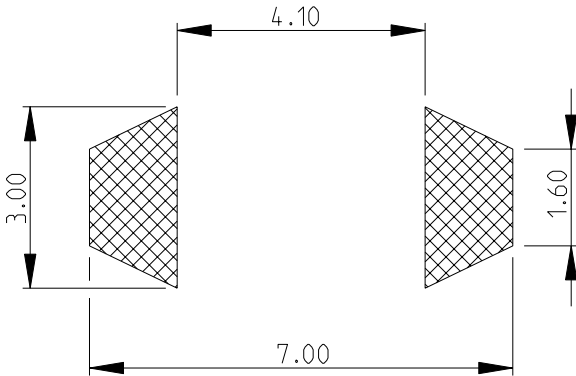


SCALE 8:1

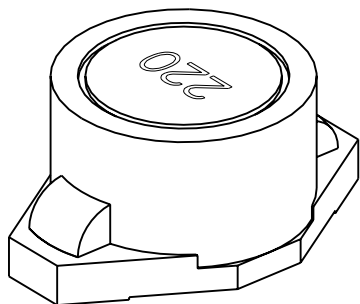
SERIES 3630E AS SHOWN



RECOMMENDED LAND PATTERN
FOR 3630E

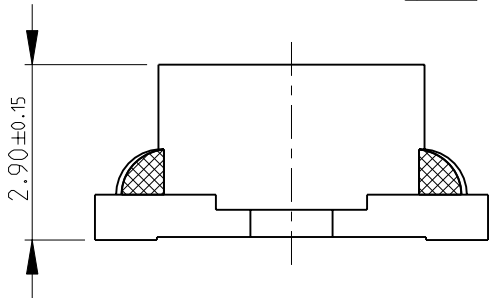
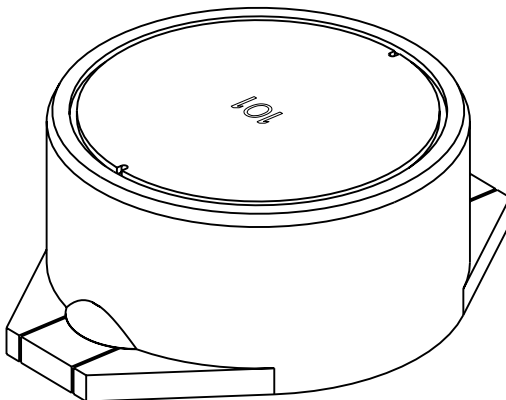


SERIES 3630E AS SHOWN



SCALE 8:1


SERIES 3630F AS SHOWN



THIS DRAWING IS A CONTROLLED DOCUMENT FOR TYCO ELECTRONICS CORPORATION
IT IS SUBJECT TO CHANGE AND THE CONTROLLING ENGINEERING ORGANIZATION
SHOULD BE CONTACTED FOR THE LATEST REVISION.

DIMENSIONS:		TOLERANCES UNLESS OTHERWISE SPECIFIED:	
mm			
	0 PLC	±0.2	
	1 PLC	±0.1	
	2 PLC	±-	
	3 PLC	±-	
	4 PLC	±-	
	ANGLES	±5°	
MATERIAL	-	FINISH	-

DWN	SUBHASH.M	14-NOV-08
CHK	PRAKASH.S	14-NOV-08
APVD	STEPHEN.P	14-NOV-08
PRODUCT SPEC	-	
APPLICATION SPEC	-	
WEIGHT	-	
CUSTOMER DRAWING		

 Tyco Electronics		Tyco Electronics Corporation Dorcan, Swindon, SN3 5HH	
NAME SHIELDED SMD POWER INDUCTORS SERIES 3630			
SIZE	CAGE CODE	DRAWING NO	RESTRICTED TO
A3	00779	Ⓒ=1676941	-
SCALE 4:1		SHEET 1 OF 1	REV BA

Mouser Electronics

Authorized Distributor

Click to View Pricing, Inventory, Delivery & Lifecycle Information:

[TE Connectivity:](#)

[4-1676941-8](#)