

4

3

2

1

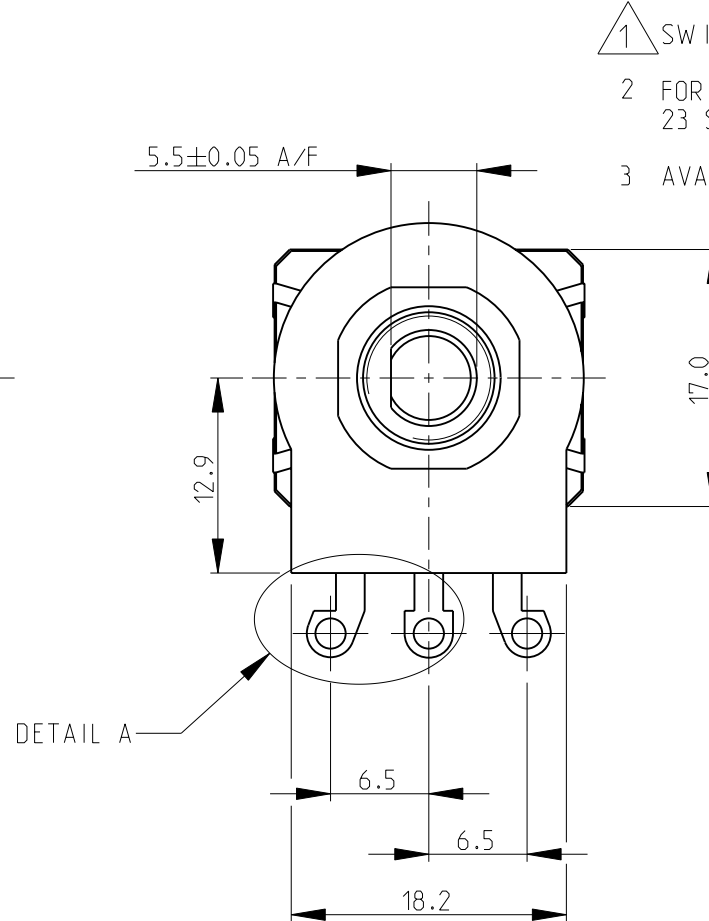
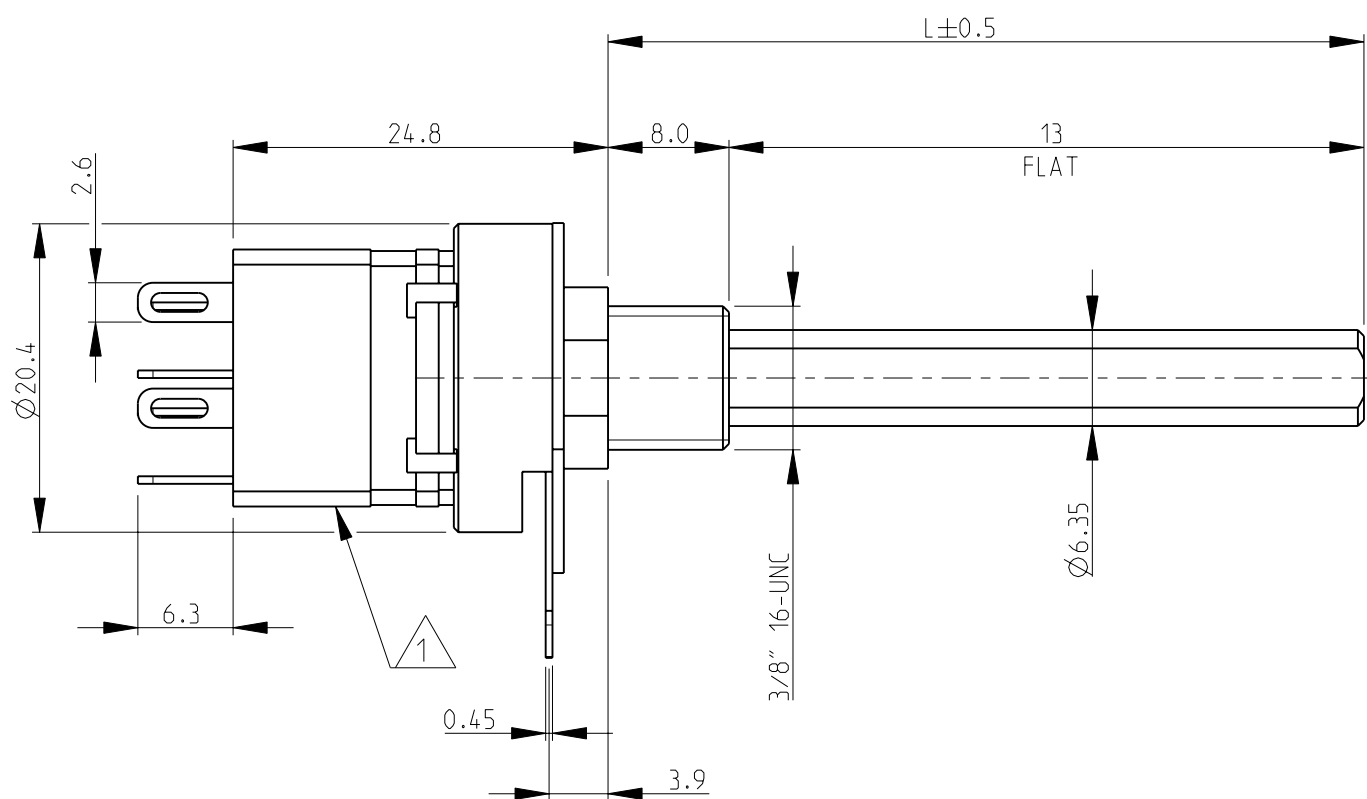
LOC	DIST	REVISIONS					
		P	LTR	DESCRIPTION	DATE	DWN	APVD
E	B		BA	NEW RELEASE	30-Jul-08	SM	St.P

D

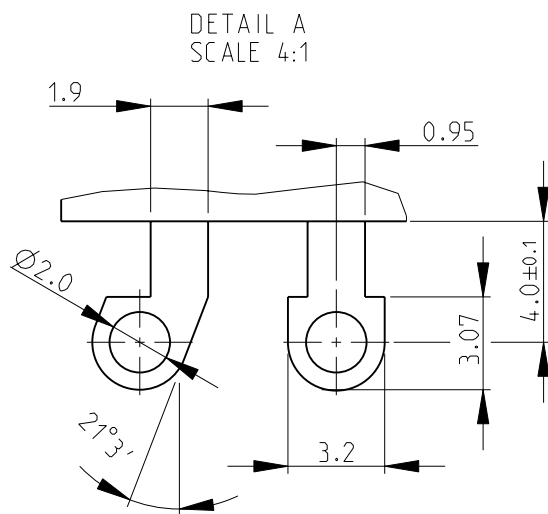
C

B

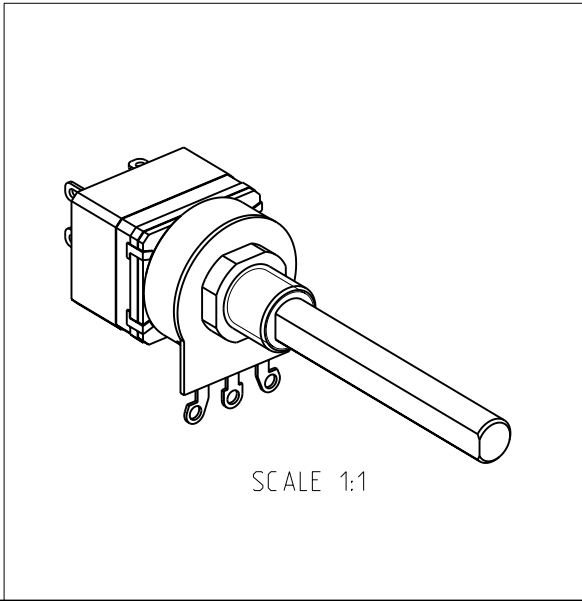
A


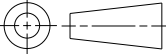


- 1 SWITCH TYPE: DPST (4A)
- 2 FOR FURTHER INFORMATION SEE DATA SHEET FOR 23 SERIES-SPINDLE OPERATED POTENTIOMETER
- 3 AVAILABLE IN DIFFERENT SHAFT LENGTHS (L) SEE DATA SHEET



RoHS Compliant



THIS DRAWING IS A CONTROLLED DOCUMENT FOR TYCO ELECTRONICS CORPORATION IT IS SUBJECT TO CHANGE AND THE CONTROLLING ENGINEERING ORGANIZATION SHOULD BE CONTACTED FOR THE LATEST REVISION.		DWN		SUBHASH.M		30-Jul-08		 Tyco Electronics Corporation Dorcan, Swindon, SN3 5HH									
		CHK		PRAKASH.S		30-Jul-08											
DIMENSIONS: mm		TOLERANCES UNLESS OTHERWISE SPECIFIED:		APVD		STEPHEN.P		30-Jul-08		NAME SPINDLE OPERATED POTENTIOMETER SERIES 23SE							
				PRODUCT SPEC		-											
		0 PLC ±0.2 1 PLC ±0.1 2 PLC ±- 3 PLC ±- 4 PLC ±- ANGLES ±5°		APPLICATION SPEC		-											
				-		-											
MATERIAL		FINISH		WEIGHT		-		SIZE		CAGE CODE		DRAWING NO		RESTRICTED TO			
-		-		-		-		A 3		00779		C=1624166		-			
CUSTOMER DRAWING										SCALE		2:1		SHEET 1 OF 1		REV BA	

# Mouser Electronics

Authorized Distributor

Click to View Pricing, Inventory, Delivery & Lifecycle Information:

[TE Connectivity:](#)

[1624166-2](#)