

4

3

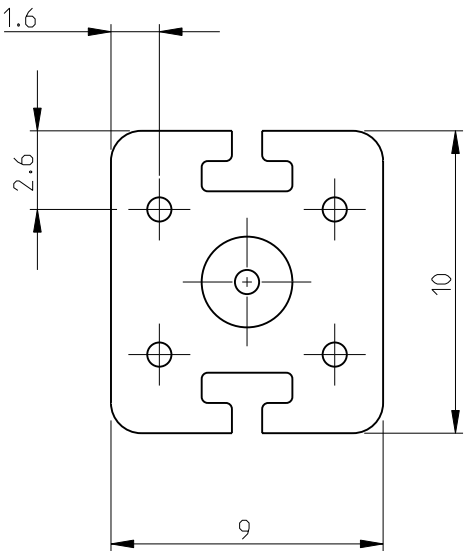
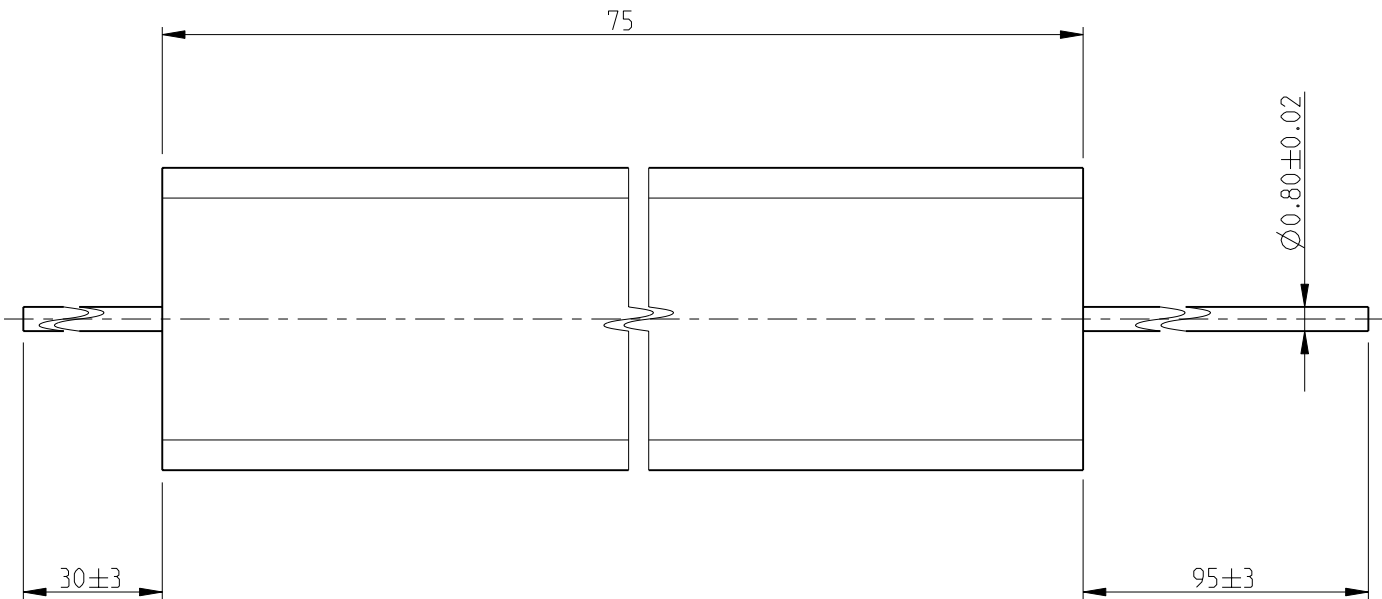
2

1

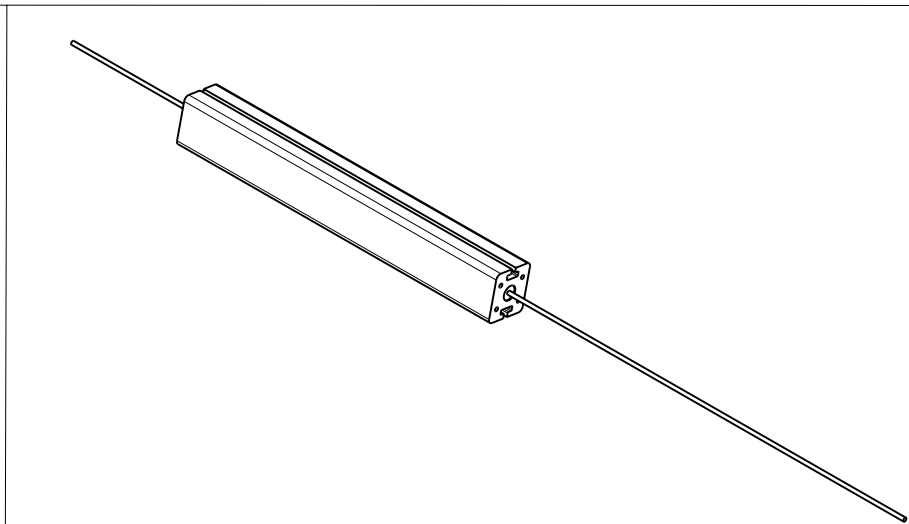
THIS DRAWING IS UNPUBLISHED.	RELEASED FOR PUBLICATION	2008
© COPYRIGHT 2008	BY TYCO ELECTRONICS CORPORATION. ALL RIGHTS RESERVED.	


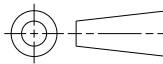
LOC	DIST	REVISIONS					
		P	LTR	DESCRIPTION	DATE	DWN	APVD
E	B		BA	NEW RELEASE	02AUG2010	PT	St.P

FOR FURTHER INFORMATION SEE DATA SHEET FOR  
SERIES TYPE SBC(SQUARE CERAMIC), HIGH POWER RESISTORS



RoHS Compliant



THIS DRAWING IS A CONTROLLED DOCUMENT FOR TYCO ELECTRONICS CORPORATION IT IS SUBJECT TO CHANGE AND THE CONTROLLING ENGINEERING ORGANIZATION SHOULD BE CONTACTED FOR THE LATEST REVISION.		DWN PARUSURAM.T 02AUG2010		 Tyco Electronics Corporation Dorcan, Swindon, SN3 5HH		
DIMENSIONS: mm		CHK STEPHEN.P 02AUG2010				
	TOLERANCES UNLESS OTHERWISE SPECIFIED:		APVD STEPHEN.P 02AUG2010		NAME HIGH POWER RESISTOR TYPE SBC (SQUARE CERAMIC) SERIES SBCHE15	
	0 PLC ±0.2 1 PLC ±0.1 2 PLC ± 3 PLC ± 4 PLC ± ANGLES ±5°		PRODUCT SPEC -			
	MATERIAL -		APPLICATION SPEC -			SIZE A 3
	FINISH -		WEIGHT 15g			CAGE CODE 00779
CUSTOMER DRAWING			DRAWING NO C-1623729		RESTRICTED TO -	
			SCALE 4:1		SHEET 1 OF 1	
			REV BA			

# Mouser Electronics

Authorized Distributor

Click to View Pricing, Inventory, Delivery & Lifecycle Information:

[TE Connectivity:](#)

[2-1623729-3](#)