

THIS DRAWING IS UNPUBLISHED.

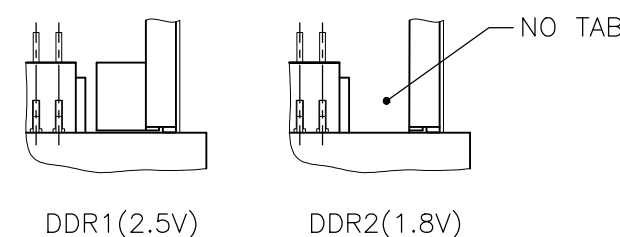
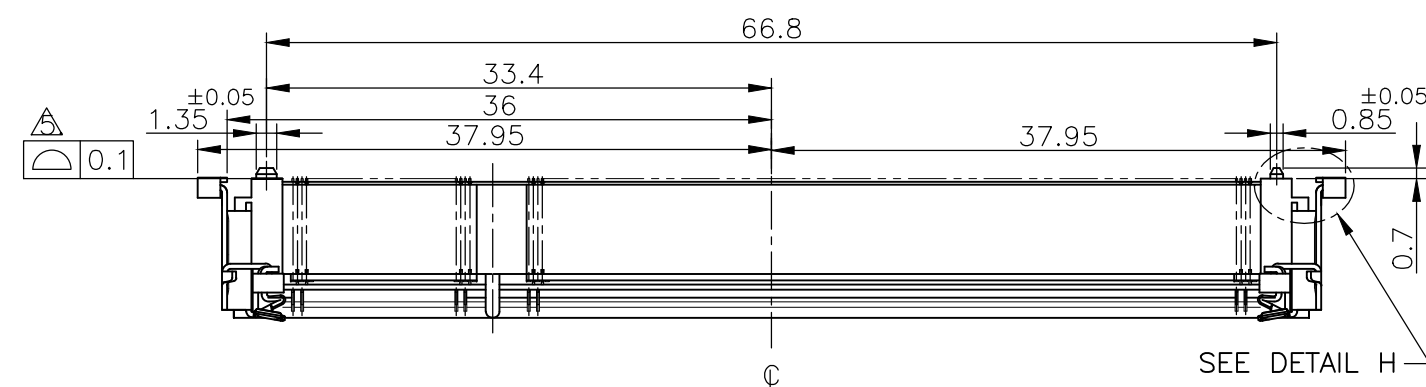
RELEASED FOR PUBLICATION

ALL RIGHTS RESERVED.

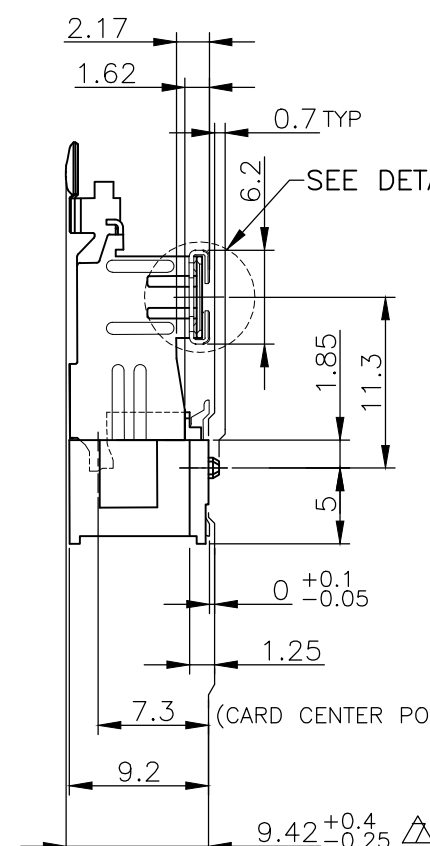
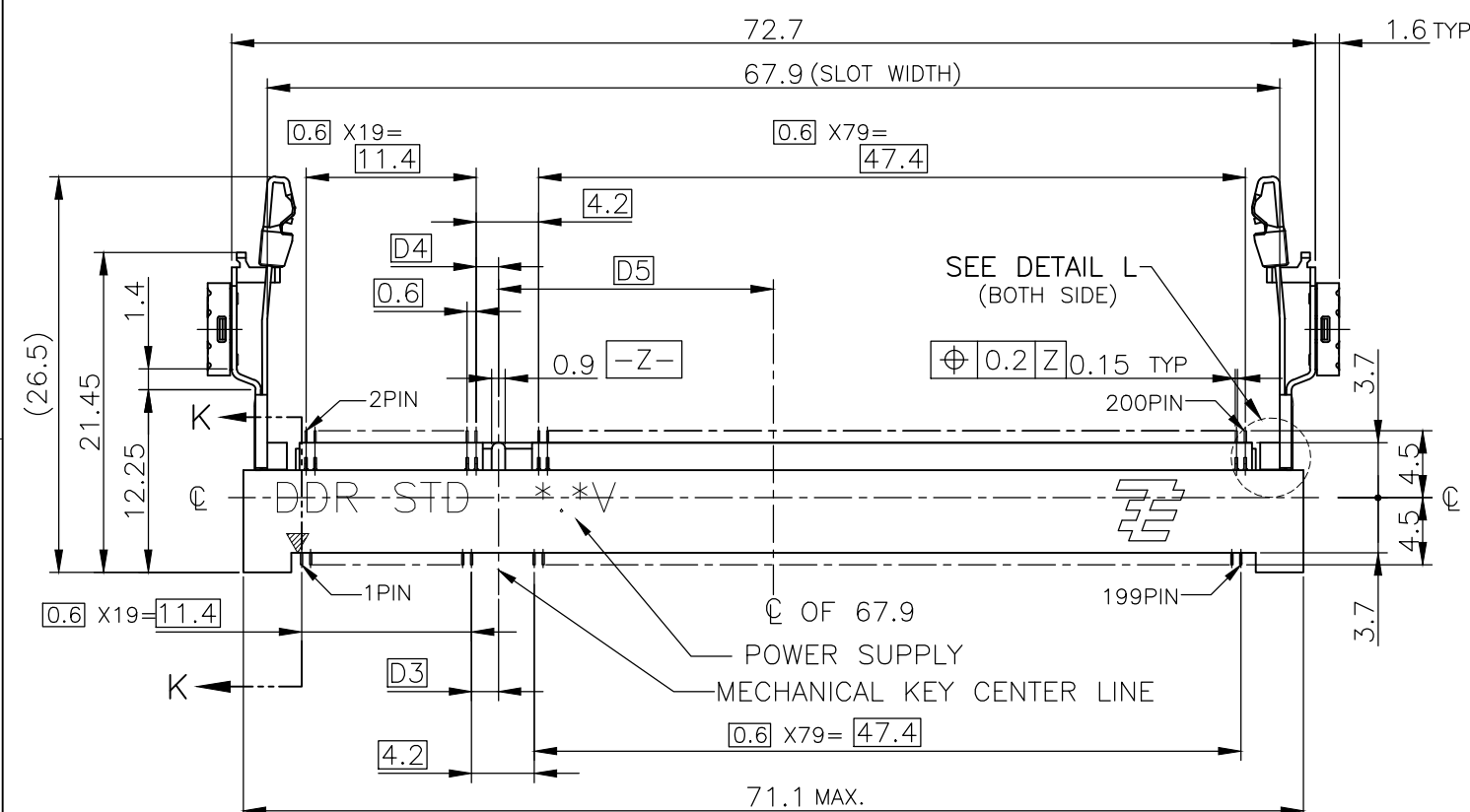
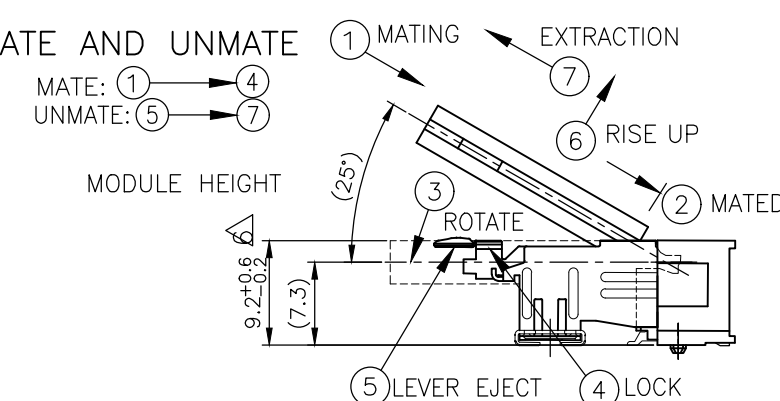
© COPYRIGHT — By —

REVISIONS

P	LTR	DESCRIPTION	DATE	DWN	APVD
	E4	REVISED	18SEP17	DZ	SL

DETAIL L
(SCALE 5:1)

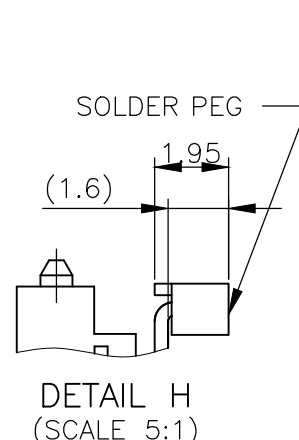
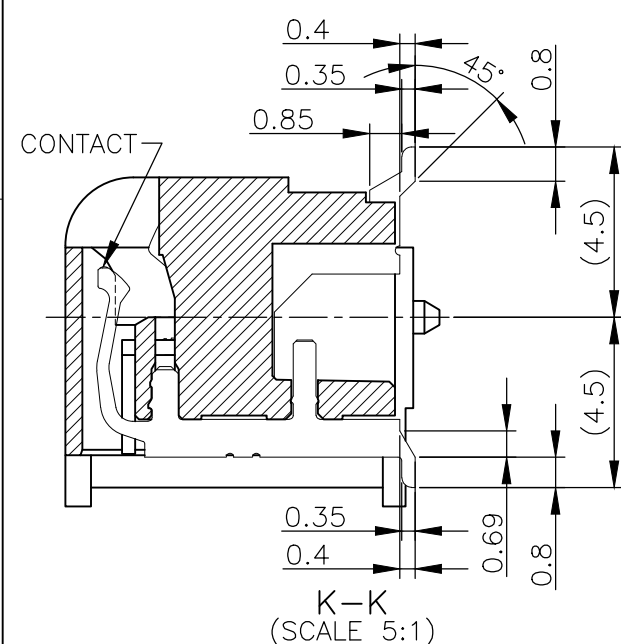
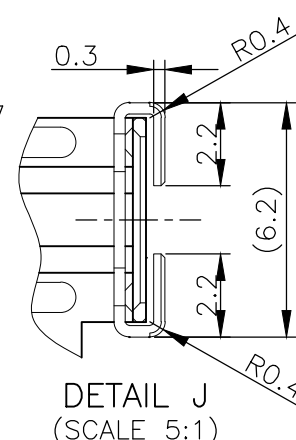
HOW TO MATE AND UNMATE




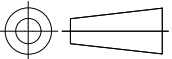
(APPLIED TO SHEET 1-2)

- MATERIAL ; HOUSING: HIGH TEMPERATURE THERMO PLASTIC UL94V-0
CONTACT: COPPER ARROY
LOCK LEVER: STAINLESS STEEL
SOLDER PEG: COPPER ARROY
- FINISH ; CONTACT AREA: GOLD FLASH
ON 0.0013MIN ALL OVER NICKEL.
SOLDERING AREA: GOLD FLASH PLT.
SOLDER PEG: TIN PLATING.

- MECHANICAL KEY POSITION OF CONNECTOR SEE TABLE.
- TOLERANCES NON-CUMULATIVE.
- COPLANARITY : 0.1 MAX.
- THE FLOATING VALUE BY SOLDERING IS NOT INCLUDED.
- NOT MATING CONDITION.
- IF THE MODULE DOESN'T INSERT AND LOCK IN THE LATCH SMOOTHLY, OPEN WIDE BOTH LATCHES BY MANUAL. AND THE MODULE MUST BE INSERTED AND LOCKED IN THE LATCH.
- THE SHAPE OF HOUSING AT KEY AREA IS FREE BASICALLY TO IMPROVE HOUSING WARPAGE

DETAIL H
(SCALE 5:1)DETAIL J
(SCALE 5:1)

GENERAL TOLERANCE
10 ≥ : ±0.2
30 ≥ > 10: ±0.25
100 ≥ > 30: ±0.3
ANGLES: ±3°

TAPE&REEL	AVAILABLE	2.5V (DDR1)	18.45	1.5	1.8	200	2-1612618-1					
TRAY	AVAILABLE	1.8V (DDR2)	17.55	2.4	2.7	200	1612618-4					
TRAY	AVAILABLE	2.5V (DDR1)	18.45	1.5	1.8	200	1612618-1					
PACKING TYPE	TOOLING STATUS	POWER SUPPLY (TYPE)	D5	D4	D3	POS	PART NO.					
THIS DRAWING IS A CONTROLLED DOCUMENT.		DWN J.TANIGAWA 210CT02	<div> TE Connectivity</div>									
		CHK H.KODAMA 210CT02										
DIMENSIONS: MM	TOLERANCES UNLESS OTHERWISE SPECIFIED: <div><div>0 PLC ± -</div><div>1 PLC ± -</div><div>2 PLC ± -</div><div>3 PLC ± -</div><div>4 PLC ± -</div><div>ANGLES ± ±</div></div>	APVD I.ENOMOTO 210CT02						NAME DDR1 & DDR2 SODIMM SOCKET 0.6mm PITCH 200POS				
		PRODUCT SPEC —										
MATERIAL	FINISH	APPLICATION SPEC —	SIZE CAGE CODE DRAWING NO				RESTRICTED TO					
		WEIGHT —	A300779C-1612618				—					
CUSTOMER DRAWING						SCALE 2:1	SHEET 1 OF 5	REV E4				

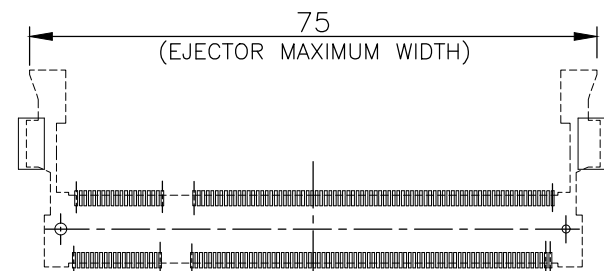
4

3

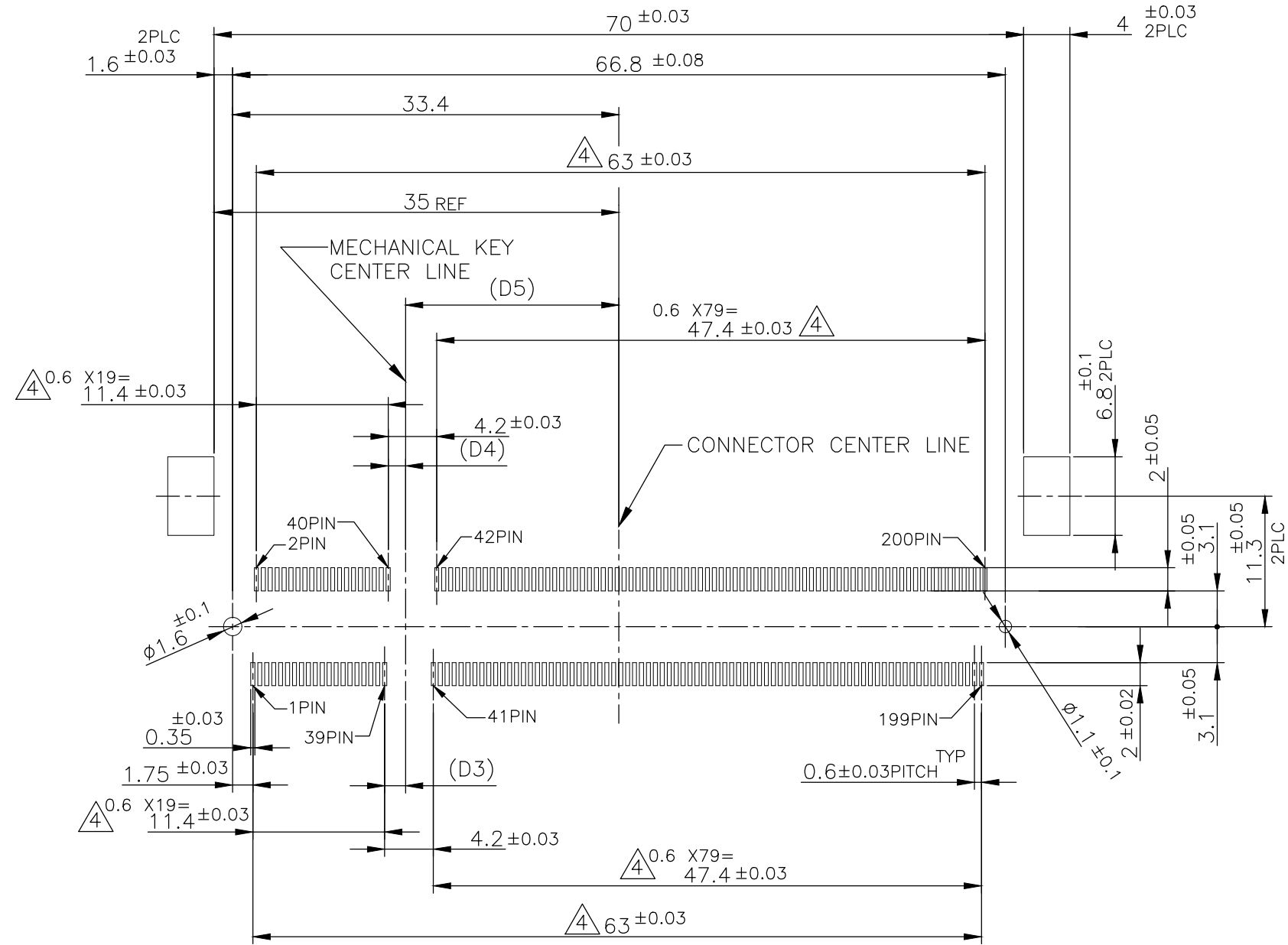
2

1

REVISIONS					
P	LTR	DESCRIPTION	DATE	DWN	APVD
	-	SEE SHEET 1	-	-	-

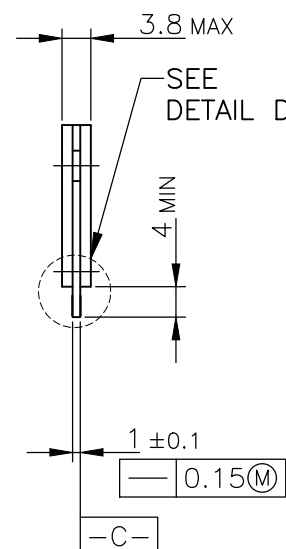


REAL SIZE (SCALE 1:1)



REFERENCE P.C. BOARD PATTERN LAYOUT FOR DUAL USE
(CONNECTOR MOUNTING SIDE)

THIS DRAWING IS A CONTROLLED DOCUMENT.		DWN		<div>STE</div> TE Connectivity	
DIMENSIONS: MM		CHK			
		APVD			
		NAME			
TOLERANCES UNLESS OTHERWISE SPECIFIED:		PRODUCT SPEC		DDR1 & DDR2 SODIMM SOCKET	
0 PLC ± -		APPLICATION SPEC		0.6mm PITCH 200POS	
1 PLC ± -		WEIGHT		SIZE	
2 PLC ± -		CUSTOMER DRAWING		CAGE CODE	
3 PLC ± -		SCALE		DRAWING NO	
4 PLC ± -		NTS		A300779	
ANGLES ±		SHEET		C-1612618	
FINISH		2 OF 5		REV E4	

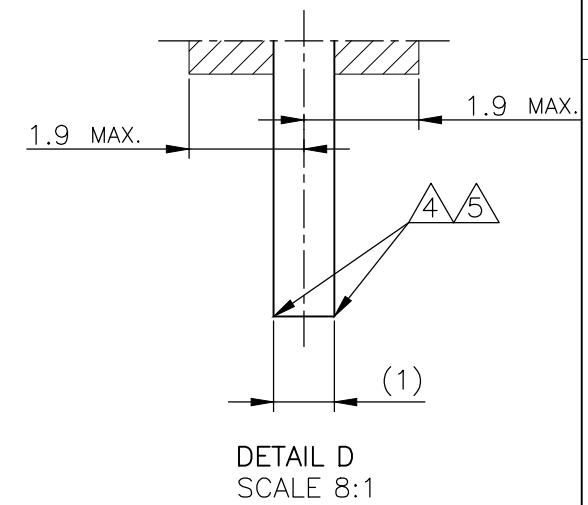
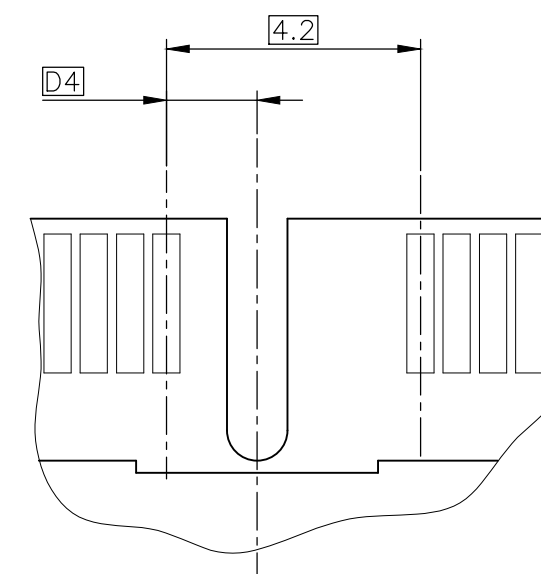
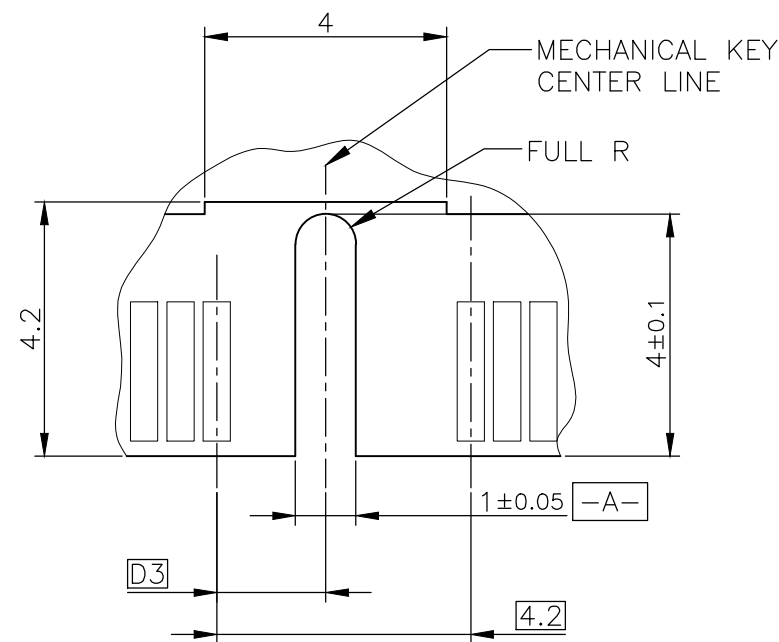
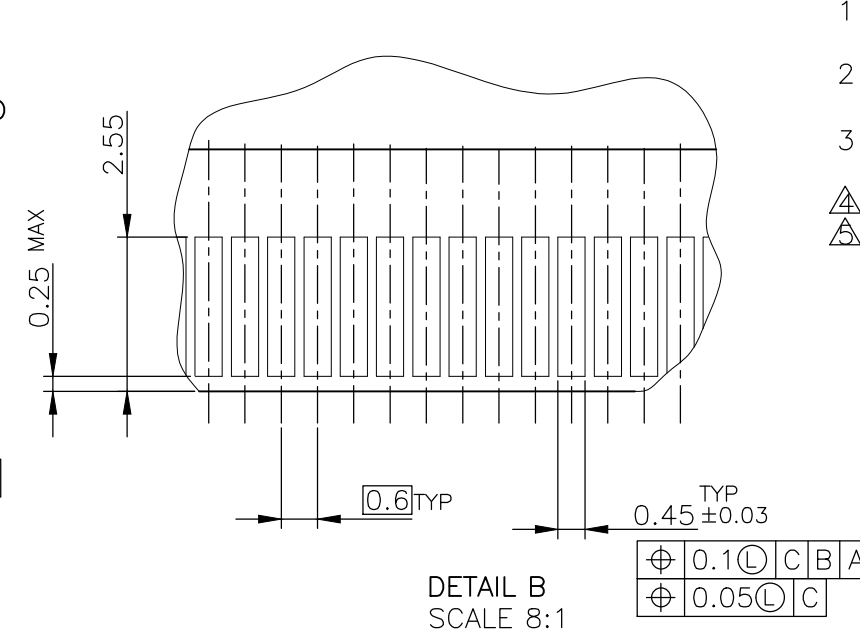


(APPLIED TO SHEET 3)

- 1 TOLERANCES ON ALL DIMENSIONS ± 0.15 UNLESS OTHERWISE SPECIFIED.
- 2 P.C. BOARD THICKNESS APPLIES ACROSS TABS AND INCLUDES PLATING AND/OR METALIZATION.
- 3 FINISH OF PAD : GOLD PLATING 0.00076 MIN. OVER Ni PLATING 0.002MIN.

⚠ NO BURR.

⚠ CHAMFER 0.25 MAX x 45° IF EXIST.




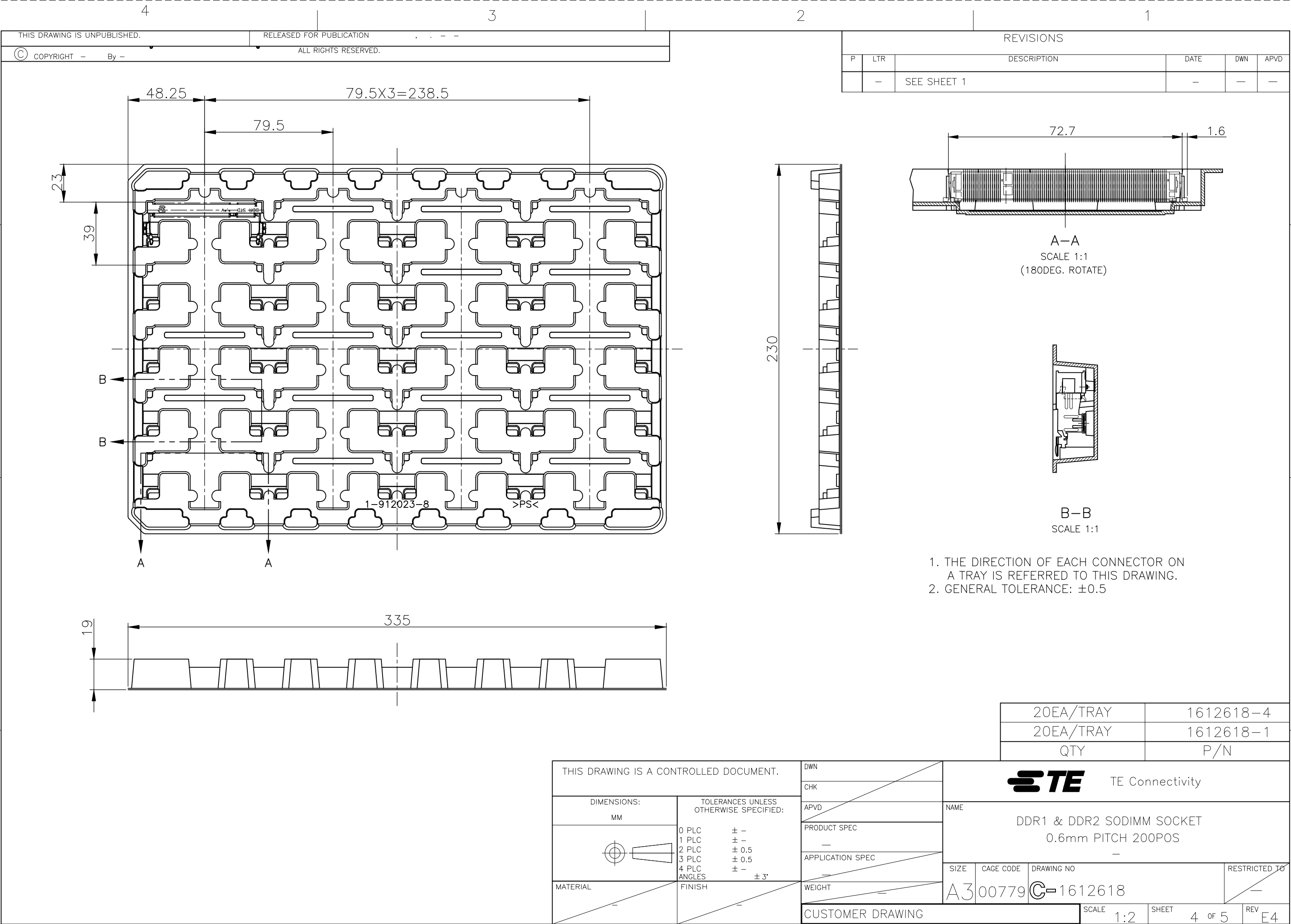
推奨基板仕様
RECOMMENDED MATING P.C.B CONFIGRATION

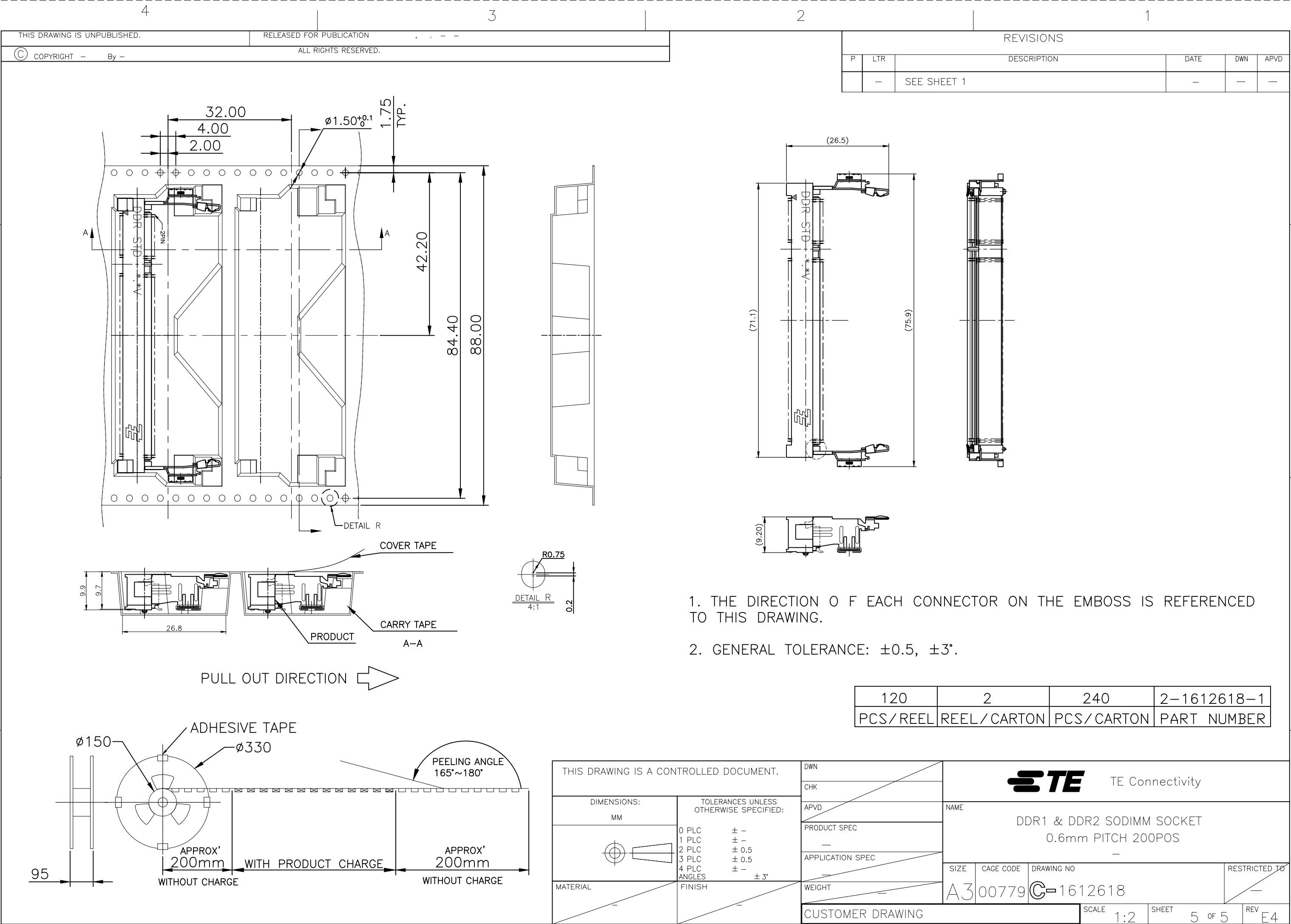
DETAIL A
SCALE 8:1 (FRONT SIDE)

DETAIL C
SCALE 8:1 (BACK SIDE)

31.75	1.8V	17.55	2.4	2.7
25.4	2.5V	18.45	1.5	1.8
H	POWER SUPPLY	D5	D4	D3

THIS DRAWING IS A CONTROLLED DOCUMENT.		DWN		 TE Connectivity	
DIMENSIONS: MM		CHK			
TOLERANCES UNLESS OTHERWISE SPECIFIED:		APVD		NAME	
0 PLC ± - 1 PLC ± - 2 PLC ± - 3 PLC ± - 4 PLC ± - ANGLES ±		PRODUCT SPEC		DDR1 & DDR2 SODIMM SOCKET	
MATERIAL		APPLICATION SPEC		0.6mm PITCH 200POS	
FINISH		WEIGHT		SIZE	RESTRICTED TO
		CUSTOMER DRAWING		CAGE CODE	
				DRAWING NO	
				SCALE	
				SHEET	
				3 OF 5	
				REV	
				F4	





Mouser Electronics

Authorized Distributor

Click to View Pricing, Inventory, Delivery & Lifecycle Information:

[TE Connectivity:](#)

[1612618-4](#)