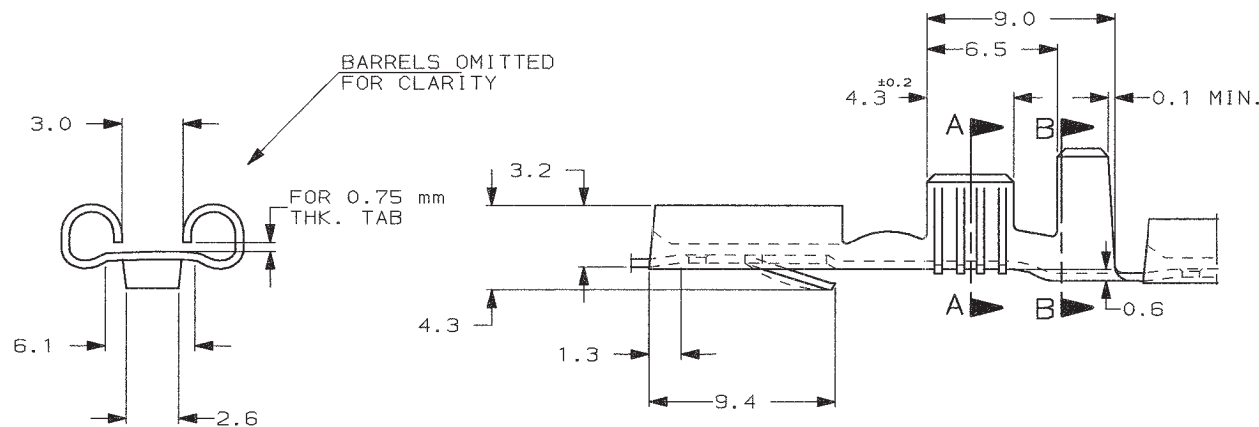


SCALA NON IMPEGNATIVA
(DO NOT SCALE)
DIMENSIONI IN
(DIMENSIONS IN) mm

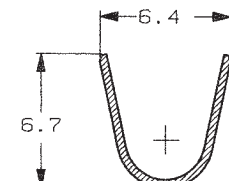
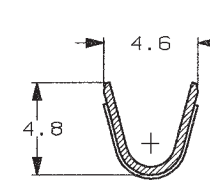
METRIC

PROIEZIONE EUROPEA
(EUROPEAN PROJECTION)

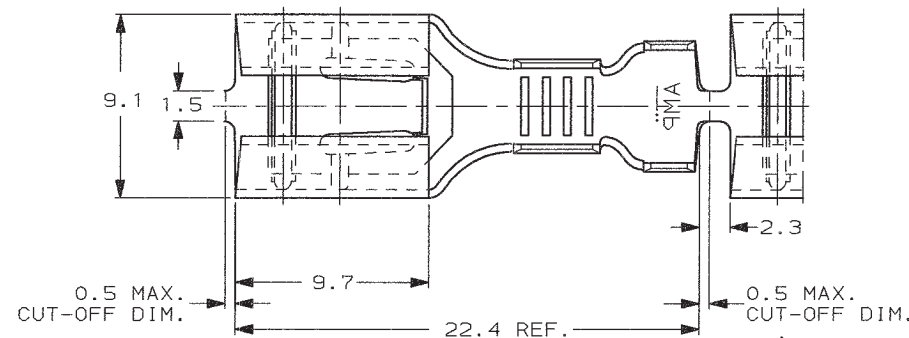


SEZIONE A-A
(SECTION A-A)

SEZIONE B-B
(SECTION B-B)

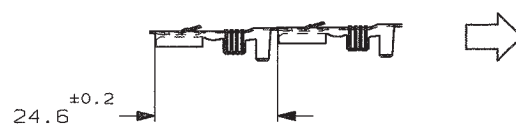


- 1 OBSOLETE PARTS: OBSOLETE CIS STREAMLINING PER D.RENAUD/D.SINISI
2 OBSOLETE PARTS



1 OBSOLETE
2 OBSOLETE
3 OBSOLETE

STATO DI FORNITURA - SCALA 1:1
(SUPPLY CONDITION - SCALE 1:1)



SENSO DI USCITA
DEL TERMINALE
DALLA BOBINA
(DIRECTION OFF
TOP OF REEL)

STAGNATO (TIN PLATED)	PHOS. BRONZE (BR. FOSFOROSO)	0-160920-4	-
-	PHOS. BRONZE (BR. FOSFOROSO)	0-160920-3	-
STAGNATO (TIN PLATED)	OTTONE (BRASS)	0-160920-2	-
-	OTTONE (BRASS)	0-160920-1	-
FINITURA / COLORE (FINISH / COLOUR)	MATERIALE (MATERIAL)	NUMERO (AMP P/N)	REV.

CUSTOMER DWG. FOR REFERENCE ONLY
DISEGNO PER CLIENTE SOLO PER RIFERIMENTO

THIS DRAWING IS UNPUBLISHED	RELEASE FOR PUBLICATION	19
© COPYRIGHT 19 BY AMP INCORPORATED, HARRISBURG, PA. ALL INTERNATIONAL RIGHT RESERVED. AMP PRODUCTS MAY BE COVERED BY U.S. AND FOREIGN PATENT AND/OR PATENT PENDING		
TOLLERANZE, SE NON DIVERSAMENTE SPECIFICATO (TOLERANCES, UNLESS OTHERWISE SPECIFIED)	DIAM. ISOLANTE (INS. DIA. RANGE) 3.3-4.5	RANGO FILO (WIRE RANGE) mm2 2.5-4.0
SCALA (SCALE) 4:1		

TE Connectivity

C2	REVISED PER ECR-19-018072	SS	27 NOV 2019	DIS. H. YAALI (DR.) 07 NOV 2001	DESCRIZIONE (DESCRIPTION) FASTIN-FASTON Connector
C1	REVISED PER ECO-09-027197	/KK	DEC 09	CONT. C. TARTARI (CHK) 07 NOV 2001	.312" sr. REC. CONTACT
C	REVISED & REDRAWN ET00-0269-01		21 NOV 01	APP. (APP.)	LOC. SIZE NUMERO (DWG NO)
REV.	REVISIONI (REVISION RECORD)	DIS. DATA (DR)			I A3 C-160920
					REV. C2
					FOGLIO (SHEET) 1 DI (OF) 1

DISTRIBUZIONE
(PRINT DISTR.)

Mouser Electronics

Authorized Distributor

Click to View Pricing, Inventory, Delivery & Lifecycle Information:

[TE Connectivity:](#)

[160920-4](#)