

THIS DRAWING IS UNPUBLISHED.

RELEASED FOR PUBLICATION

20

(C) COPYRIGHT 20

BY TYCO ELECTRONICS CORPORATION. ALL RIGHTS RESERVED.

LOC
ALDIST
2

REVISIONS

| P | LTR | DESCRIPTION | DATE | DWN | APVD |
|---|-----|------------------------------|-----------|------|------|
| | AC | REVISED BY ES00-0040-02 | 02APR02 | J.L | J.L |
| | AD | REVISED BY ES00-05-0095 | 14/DEC/05 | J.L | JL |
| | AD1 | REVISED PER ECO-10-000444 | 09JAN10 | KK | AEG |
| | AD2 | ECR-10-009742 | 29JUN10 | RK | SRE |
| | AD3 | ADDED NEW DASH 3-160759-4 | 22MAR11 | J.S. | L.B. |
| | AD4 | UPDATED TE CONNECTIVITY LOGO | 04APR2011 | J.S. | L.B. |

NOTES:

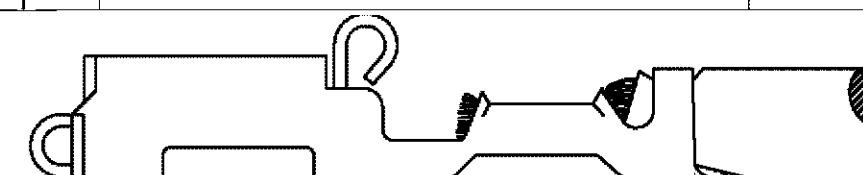
1 FOR USE ON STANDARD
APPLICATOR (RIGHT-LEFT FEED)

2 FOR USE ON MINIATURE
APPLICATOR (LEFT-RIGHT FEED)

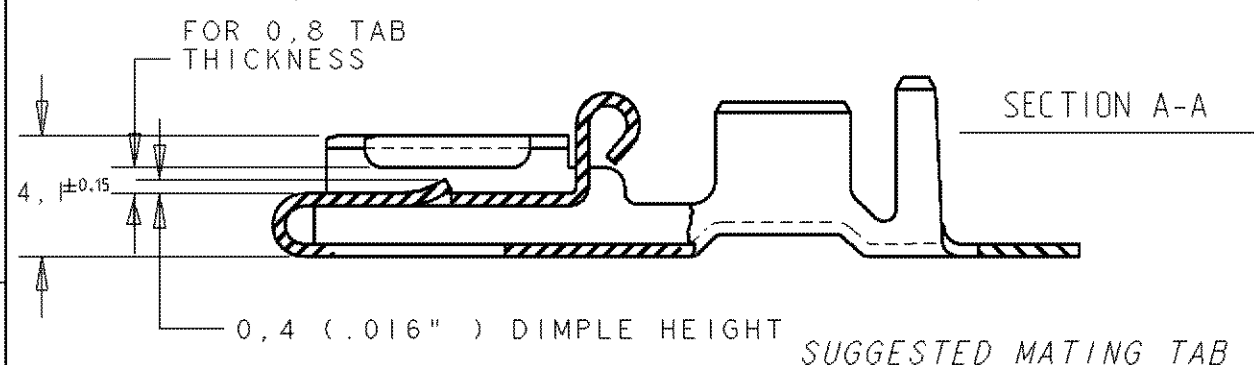
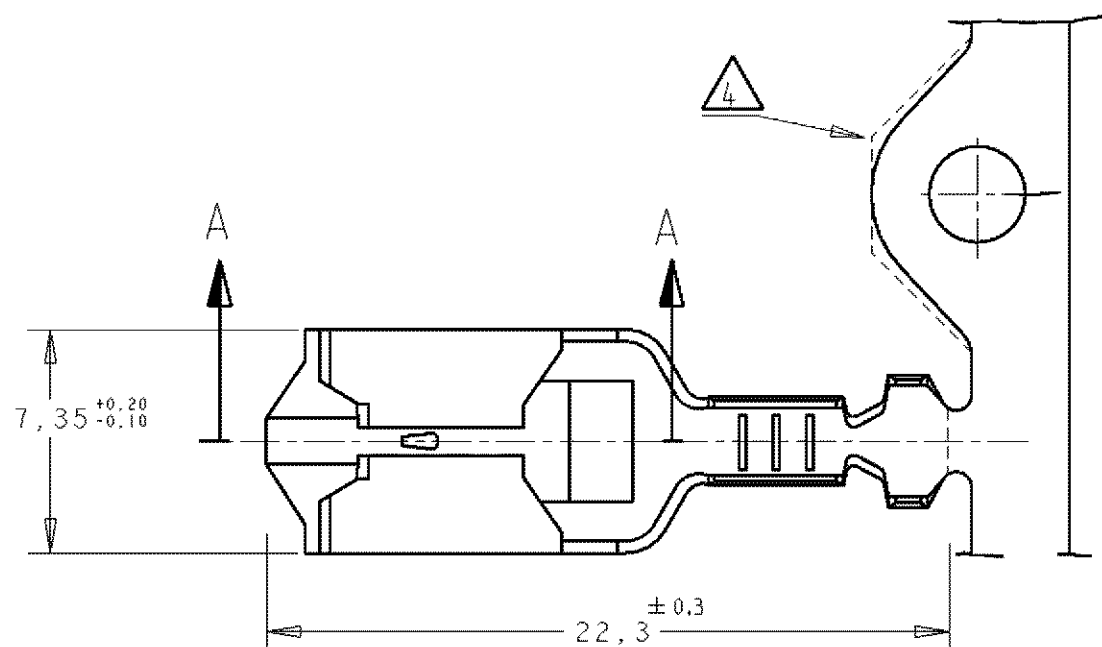
3 FOR USE ON MINIATURE APPLICATOR
(LEFT-RIGHT FEED)
AMPOMATOR APPLICATION.

4 CONFIGURATION OF CARRIER-STRIP
OPTIONAL

5 OBSOLETE PARTS: OBSOLETE CIS STREAMLINING PER
D.RENAUD/D.SINISI



0,5 MAX CUT OFF

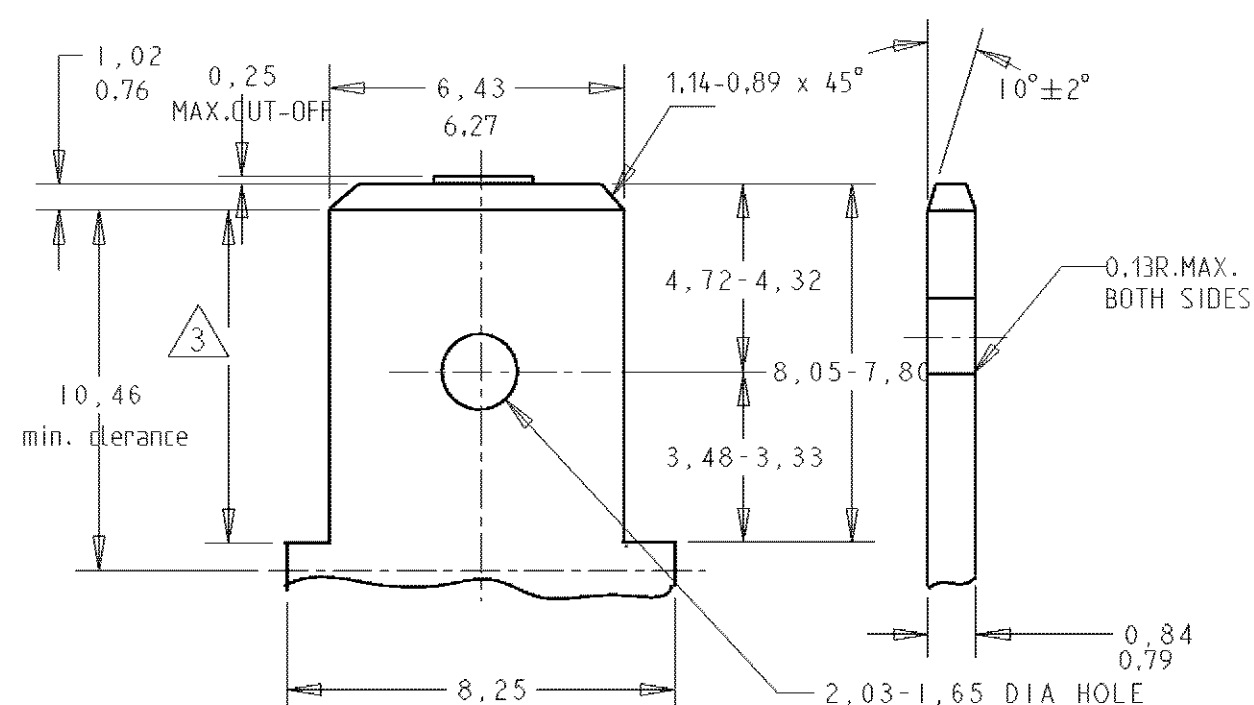
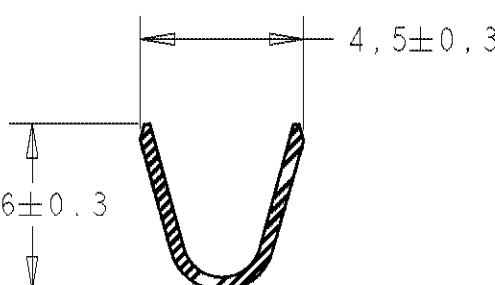
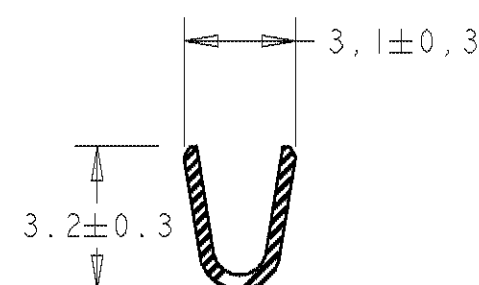


1- MATL. 1/2H BRASS OR NICKEL PL. STEEL.

2- NO BURRS PERMISSIBLE AT HOLE

3- MUST BE FLAT WITHIN 0,076 OVER THIS LENG.

4- TIN PLATING IS REQUIRED ON BRASS WHEN TERMINAL TEM. IS OVER 225°F

5- HOLE MUST BE SYMETRICAL ABOUT TAB ϕ WITHIN 0,076THIS DRAWING IS A CONTROLLED DOCUMENT FOR TYCO ELECTRONICS CORPORATION
IT IS SUBJECT TO CHANGE AND THE CONTROLLING ENGINEERING ORGANIZATION
SHOULD BE CONTACTED FOR THE LATEST REVISION.

| DIMENSIONS: | TOLERANCES UNLESS OTHERWISE SPECIFIED: |
|-------------|---|
| mm | |
| 0 PLC | ± |
| 1 PLC | ± |
| 2 PLC | ±0,3 GENERAL |
| 3 PLC | ± |
| 4 PLC | ± |
| ANGLES | ± |
| FINISH | ± |

MATERIAL SEE TABLE

SEE TABLE

| | | |
|------------------|-----------|----------|
| DWN | J.Z | 16-11-95 |
| CHK | A. BIJNEN | 17-11-95 |
| APVD | - | - |
| PRODUCT SPEC | 108-3017 | |
| APPLICATION SPEC | - | |
| WEIGHT | - | |

CUSTOMER DRAWING

STE
TE ConnectivityPOSITIVE LOCK REC.
.250 (6,35) SERIES

| SIZE | CAGE CODE | DRAWING NO | RESTRICTED TO |
|------|-----------|------------|---------------|
| A3 | 00779 | C=160759 | - |

SCALE - SHEET OF REV AD4

Mouser Electronics

Authorized Distributor

Click to View Pricing, Inventory, Delivery & Lifecycle Information:

[TE Connectivity:](#)

[2-160759-1](#)