

THIS DRAWING IS UNPUBLISHED.

RELEASED FOR PUBLICATION

20

(C) COPYRIGHT 20

BY TYCO ELECTRONICS CORPORATION. ALL RIGHTS RESERVED.

LOC
ALDIST
2

REVISIONS

P	LTR	DESCRIPTION	DATE	DWN	APVD
	AC	REVISED BY ES00-0040-02	02APR02	J.L	J.L
	AD	REVISED BY ES00-05-0095	14/DEC/05	J.L	JL
	AD1	REVISED PER ECO-10-000444	09JAN10	KK	AEG
	AD2	ECR-10-009742	29JUN10	RK	SRE
	AD3	ADDED NEW DASH 3-160759-4	22MAR11	J.S.	L.B.
	AD4	UPDATED TE CONNECTIVITY LOGO	04APR2011	J.S.	L.B.

NOTES:

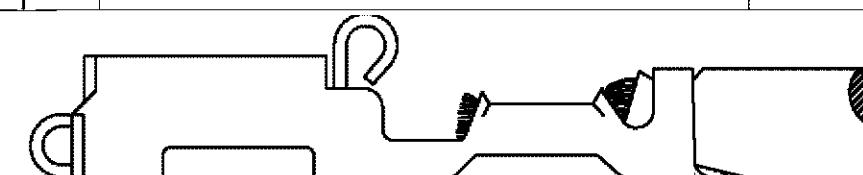
1 FOR USE ON STANDARD
APPLICATOR (RIGHT-LEFT FEED)

2 FOR USE ON MINIATURE
APPLICATOR (LEFT-RIGHT FEED)

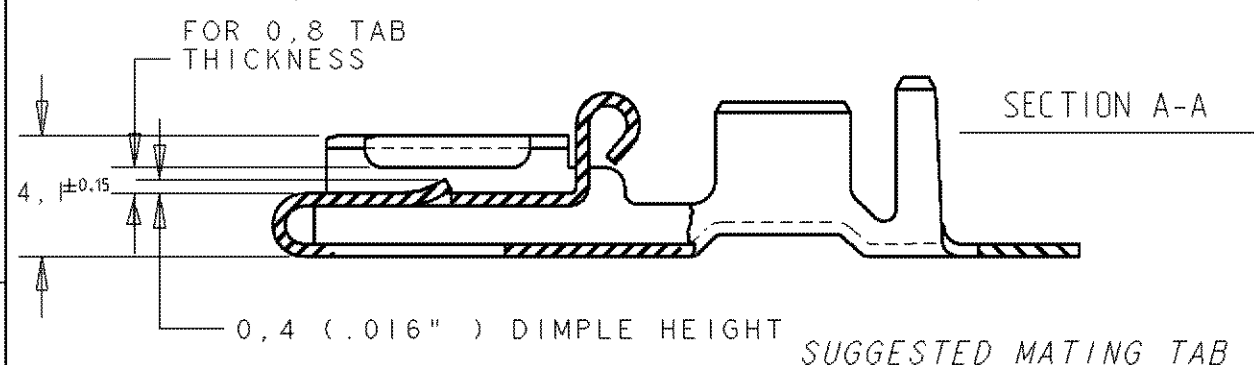
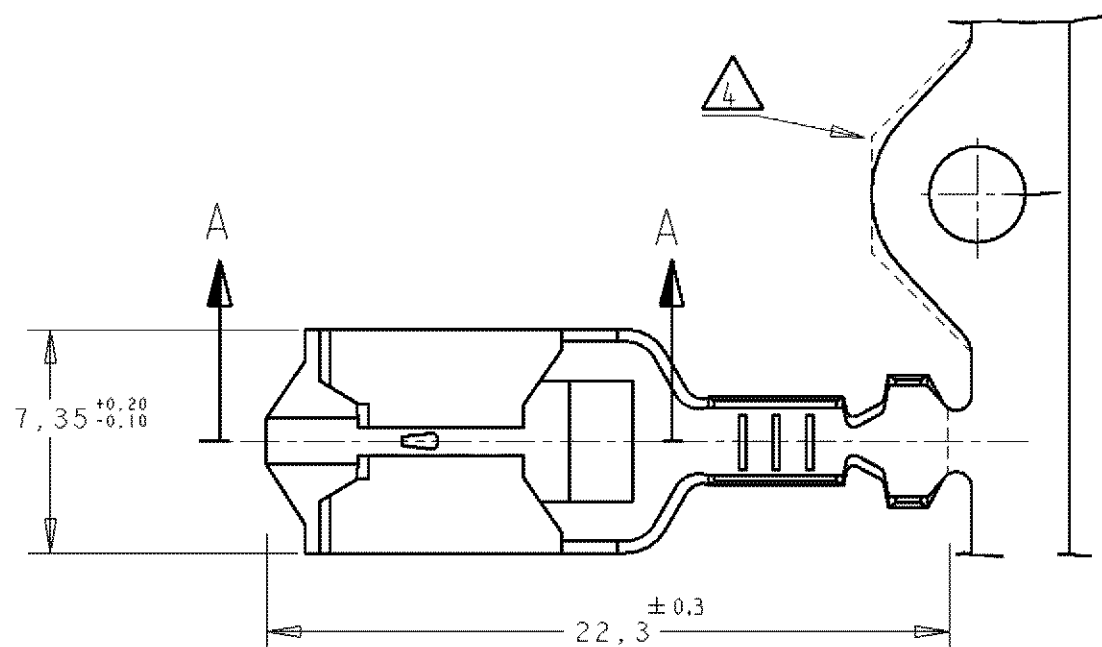
3 FOR USE ON MINIATURE APPLICATOR
(LEFT-RIGHT FEED)
AMPOMATOR APPLICATION.

4 CONFIGURATION OF CARRIER-STRIP
OPTIONAL

5 OBSOLETE PARTS: OBSOLETE CIS STREAMLINING PER
D.RENAUD/D.SINISI



0,5 MAX CUT OFF

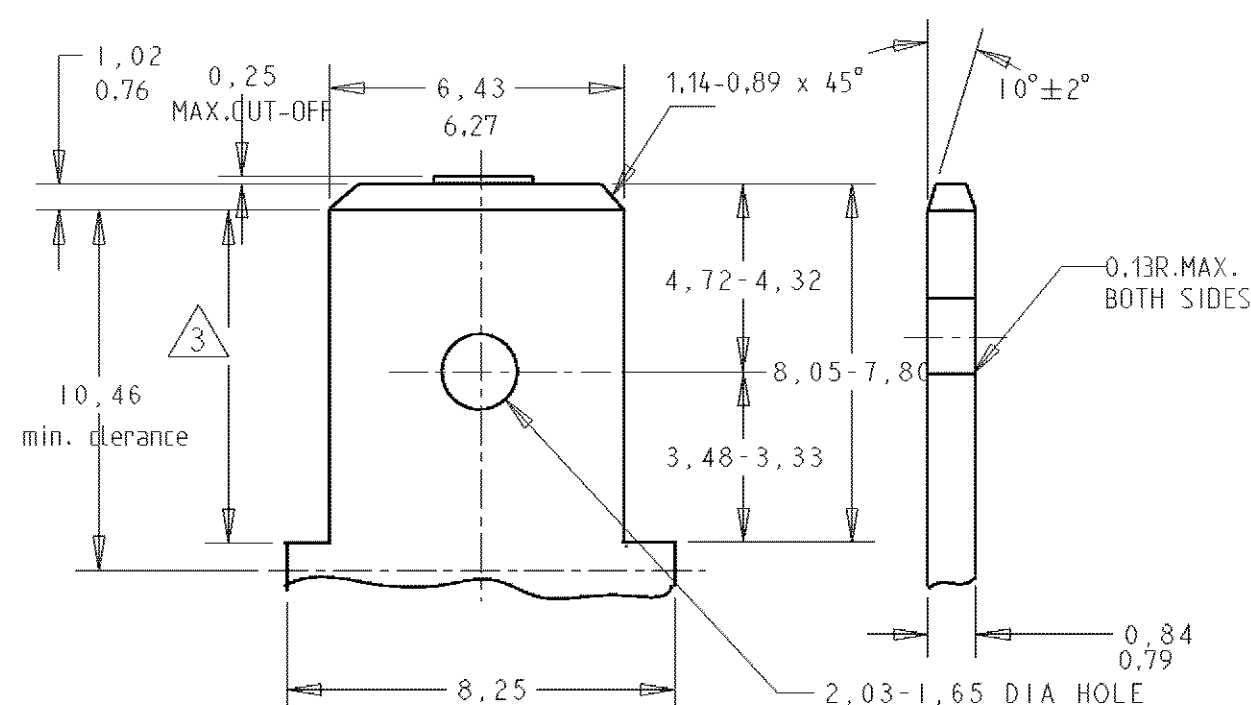
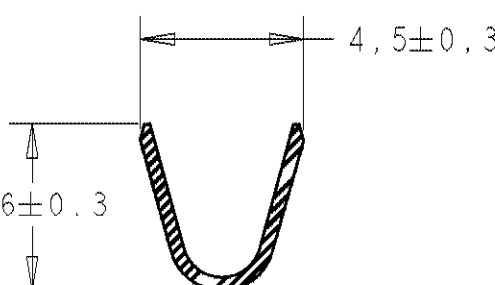
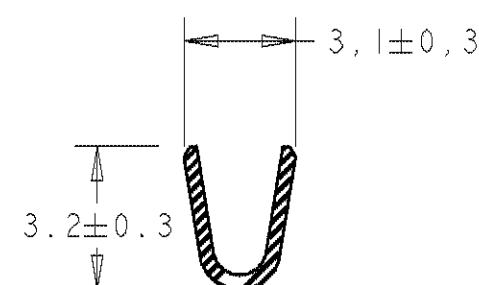


1- MATL. 1/2H BRASS OR NICKEL PL. STEEL.

2- NO BURRS PERMISSIBLE AT HOLE

3- MUST BE FLAT WITHIN 0,076 OVER THIS LENG.

4- TIN PLATING IS REQUIRED ON BRASS WHEN TERMINAL TEM. IS OVER 225°F

5- HOLE MUST BE SYMETRICAL ABOUT TAB ϕ WITHIN 0,076THIS DRAWING IS A CONTROLLED DOCUMENT FOR TYCO ELECTRONICS CORPORATION
IT IS SUBJECT TO CHANGE AND THE CONTROLLING ENGINEERING ORGANIZATION
SHOULD BE CONTACTED FOR THE LATEST REVISION.

DIMENSIONS:	TOLERANCES UNLESS OTHERWISE SPECIFIED:
mm	
	0 PLC ±
	1 PLC ±
	2 PLC ±0,3 GENERAL
	3 PLC ±
	4 PLC ±
	ANGLES ±
	FINISH ±

MATERIAL SEE TABLE

SEE TABLE

DWN J.Z 16-11-95

CHK A. BIJNEN 17-11-95

APVD -

PRODUCT SPEC

108-3017

APPLICATION SPEC

-

WEIGHT -

CUSTOMER DRAWING

STE
TE ConnectivityPOSITIVE LOCK REC.
.250 (6,35) SERIES

SIZE	CAGE CODE	DRAWING NO	RESTRICTED TO
A3	00779	C=160759	-

SCALE - SHEET OF REV AD4

Mouser Electronics

Authorized Distributor

Click to View Pricing, Inventory, Delivery & Lifecycle Information:

[TE Connectivity:](#)

[1-160759-1](#)